

Configuring Your Macintosh for Dial-Up: OS 8.6 through 9.x

System Requirements

Any new Macintosh can be used for connecting to the Columbia network. If you have an older Macintosh, you should check out the system requirements at

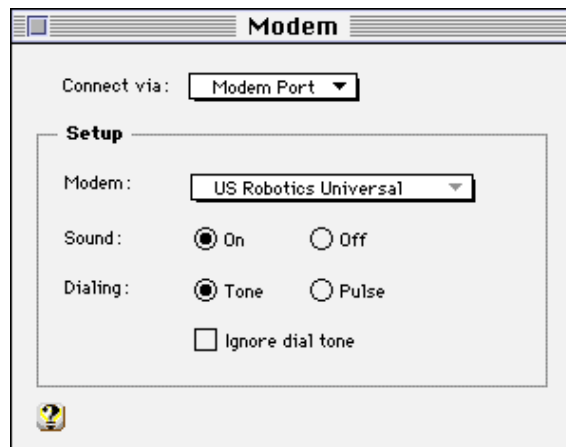
<http://www.columbia.edu/acis/support/supported.html>

You can connect at any speed from 14.4 to 56K (v.90 or k56flex).

Setting up Your Dial-Up Connection

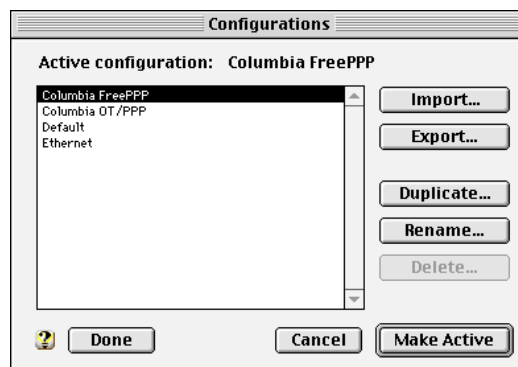
Step 1. Configure the Modem Control Panel

1. Open the Modem control panel.
2. Select the appropriate port from the **Connect via:** drop-down menu.
3. Select your modem from the **Modem:** drop-down menu.
4. Choose whether you want the dialing sounds on, and whether you have tone or pulse dialing. If you select **Ignore dial tone**, the PPP software will not wait for a dial tone before dialing. This may be useful if you use the phone company's voicemail service, since you will not have a normal dial tone if you have messages waiting. **Normally you should leave this unchecked.**
5. Close the Modem control panel by clicking in the close box in the upper left-hand corner of the window.



Step 2. Configure the TCP/IP Control Panel

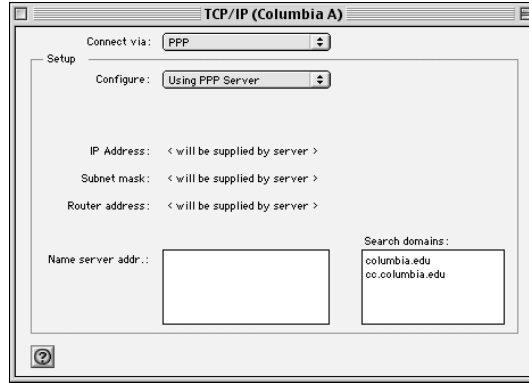
1. Open the TCP/IP control panel and select **Configurations...** from the File menu.
2. Select **<Default>** and click **Duplicate**. Type **ColumbiaA** for the name and click **OK**.
3. Back in the Configurations window, select your newly named connection and click **Make Active**. You will be returned to the TCP/IP window, where you will see the name of your new active configuration in the title bar.



4. Set the connection to **PPP** and the Configure setting to **Using PPP Server**.

Then fill in the information for the Search domains as illustrated on the right. The **Name server address** box should be left blank.

5. Click the close box of the TCP/IP control panel and when asked to save the changes to the current configuration, click **Save**.



Step 3. Configure the Remote Access Control Panel

1. Open the **Remote Access** control panel and select **Configurations...** from the File menu.
2. With **<default>** highlighted, click **Duplicate...** and type **Columbia A** for the name.
3. Back in the Configurations window, select your newly named connection and click **Make Active**. You will be returned to the **Remote Access** window, where you will see the name of your new active configuration in the title bar.

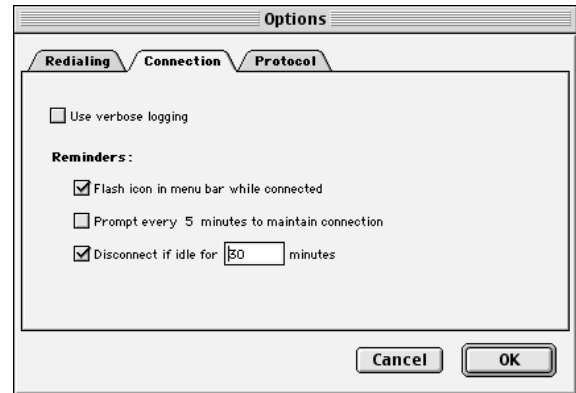
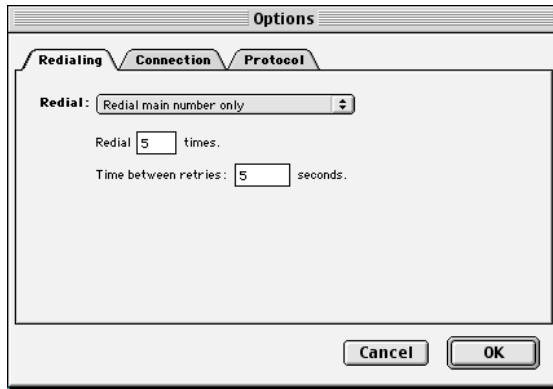
4. Fill in your UNI, your password, and the dial-up number 1-212-854-3100. Note that you should *not* include **@columbia.edu**.

Tip: If the main dial-up number is busy, you can try connecting to 1-212-854-2477 instead. This Express Modem Pool has a time limit of 25 minutes and is meant for people who need just a short session.

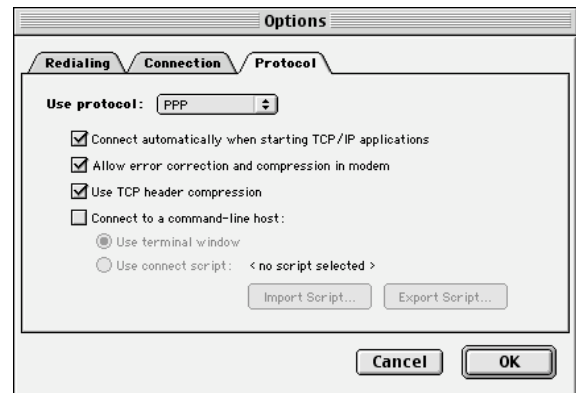


*Tip: If you have **Call Waiting** service on your phone line, you should suspend it for the duration of your dial-up session. To do this add ***70**, to the beginning of the phone number you have the modem dial (i.e. *70,12128543100). This string may vary in different locations, and the ability to turn off call waiting may not even be available; check with your local phone company if *70 doesn't work.*

- Click **Options...** at the bottom of the **Remote Access** control panel and set the Redialing and Connections options as illustrated below.



- Under the Protocol options, set the protocol to **PPP** and select the top three options.
- Click **OK**, and when asked to save the changes to the current configuration, click **Save**.



Step 4. Test Your Connection

You will use the Remote Access control panel to open your first PPP session to test your setup. Once you have all your software properly configured, you will not need to use this control panel unless you want to; your Macintosh will initiate a PPP connection automatically when you start up an Internet application such as Netscape.

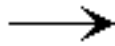
Tip: If you are running software that watches for incoming FAXes, you need to disable it because it may interfere with the use of your modem. If you don't know how to disable your FAX-monitoring software refer to the manual which came with your FAX modem. You can also call the modem manufacturer for help.

- Open the Remote Access control panel if it is not already open.

2. Click **Connect** at the bottom of the Remote Access control panel.

In the Status panel at the bottom of the window you will see step-by-step messages as your Macintosh dials the phone and connects with the AcIS Dial-Up Network Service.

When your connection has been established and is ready for you to use, the **Connect** button will turn into a **Disconnect** button and the Status panel will look something like this:



If you get a busy signal, your Mac will redial automatically according to the options set in the Remote Access control panel.



3. You can now run a network software program such as Netscape.

For More Help

- If you have a laptop computer, bring it along with your modem and all cables and manuals to the Computing Support Center, 102 Philosophy Hall, Monday through Thursday, 10am-5pm and Friday, 12 noon - 5pm. **This carry-in service is available for laptop computers only, and you must remain with the consultant while your problem is diagnosed.**
- For telephone support, call the Columbia Computing Helpdesk at 1-212-854-1919, Monday through Thursday, 8am-8pm and Friday, 8am-5pm.
- Send electronic mail to *consultant@columbia.edu*
- Find information about the AcIS modem pool and modems in general at:
<http://www.columbia.edu/acis/access/offcampus/>

Rev. 061303