

Configuring Your Macintosh for Dial-Up: *Macintosh OS X*

*Tip: If you plan on using your Mac laptop with different types of networking from different locations (e.g. a wired connection in your residence hall room and wireless out on the steps), you will probably want to learn to set up and use the Mac's **Location Manager**. Start by choosing **Mac Help** from the Finder's Help menu and search for **location manager**, and read about **adding a network location**.*

System Requirements

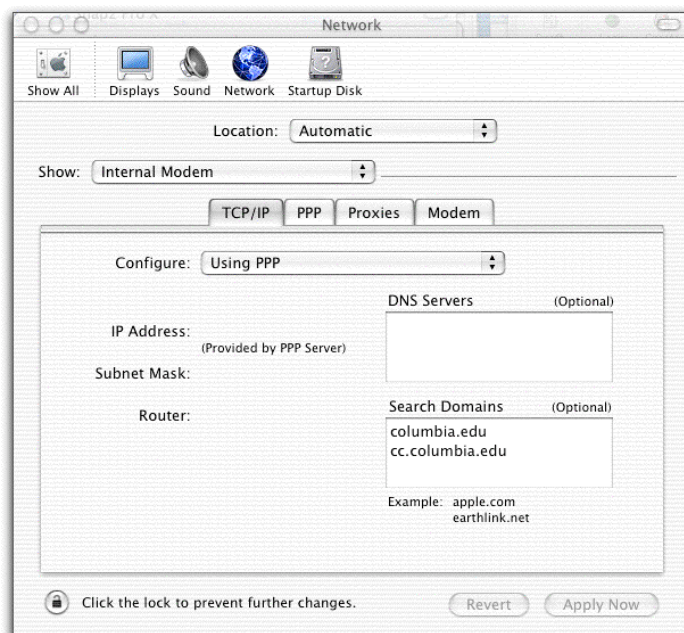
Any Macintosh capable of running MacOS X can be used to connect to the Columbia network. You can connect at any speed from 14.4 to 56K (v.90 or k56flex).

Setting Up Your Dial-Up Connection

Step 1. TCP/IP Settings

1. Choose **System Preferences** from the Apple menu or click the System Preferences icon in the dock.
2. In the System Preferences window that appears, click the **Network** icon to display its options.
3. Select **Internal Modem** from the Show drop-down menu.
4. With the **TCP/IP** tab selected, select **Using PPP** from the Configure drop-down menu.
5. In the **Search Domains** box, enter:

columbia.edu
cc.columbia.edu



Step 2. PPP Settings

1. With the **PPP** tab selected, fill in **Columbia University** as your service provider.
2. Type your UNI in the **Account Name** box. Don't include **@columbia.edu**.

AcIS recommends strongly that you NOT save your password here.

3. The main Columbia dial-up number is **1-212-854-3100**.

Tip: If the main dial-up number is busy, you can try connecting to 1-212-854-2477 instead. This Express Modem Pool has a time limit of 25 minutes and is meant for people who need just a short session

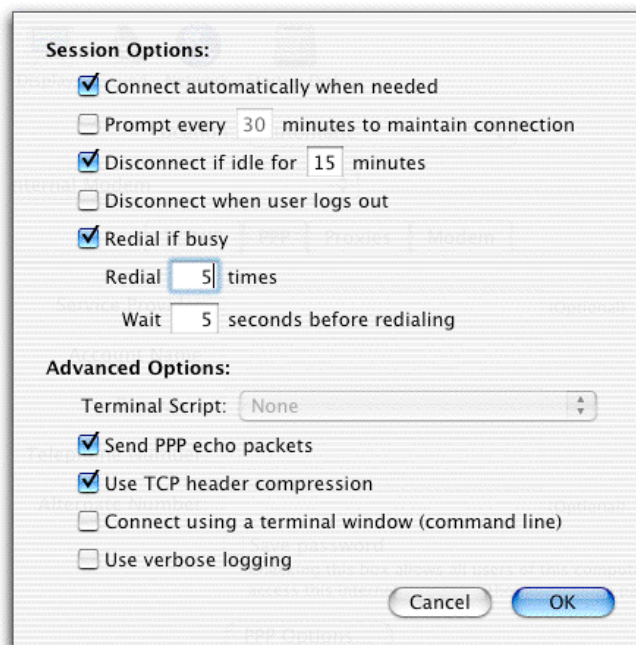
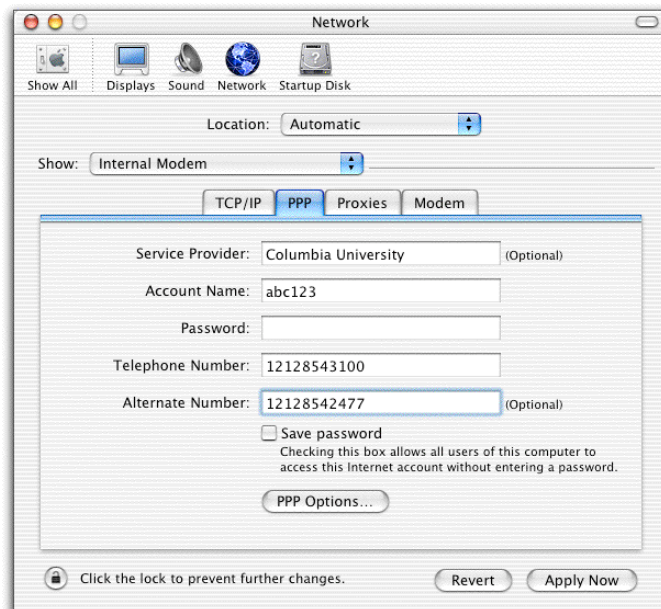
4. Click the **PPP Options** button.

*Tip: If you have Call Waiting service on your phone line, you should suspend it for the duration of your dial-up session. To do this add *70, to the beginning of the phone number you have the modem dial (i.e. *70,12128543100). This string may vary in different locations, and the ability to turn off call waiting may not even be available; check with your local phone company if *70 doesn't work.*

5. **PPP Options.** How you configure most of the settings in the **PPP Options** screen is up to you. AcIS suggests that you have your Mac connect automatically when you start a TCP/IP application (such as Netscape).

Under **Advanced Options**, check the first two boxes and leave the last two unchecked.

*Tip: If you find that you have problems with dropped connections or other performance issues, you can try turning off **TCP header compression**.*

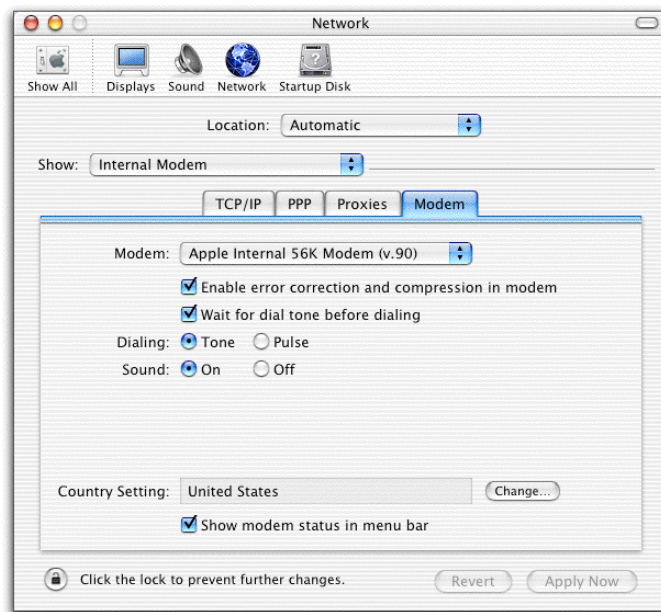


Step 3. Modem Settings

1. With the **Modem** tab selected, choose your modem from the **Modem** drop-down menu.

2. You can set the other options on this screen as you wish. AcIS recommendations are shown in the screen to the right.

*Tip: If you use the phone company's voicemail system, you may not have a normal dial tone if there are messages waiting. In this case you should probably NOT check the box **Wait for dial tone before dialing**. Otherwise you will have to clear your voicemail messages before being able to make a data connection.*



3. Click **Apply Now** and then select **Quit** from the System Preferences menu.

Step 4. Test Your Connection

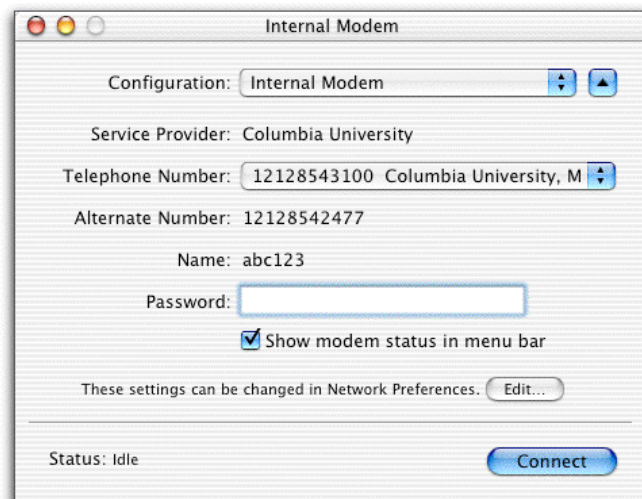
To connect to Columbia, open **Internet Connect** in the Applications folder. The settings you made in the Network panel of System Preferences will display in the Internet Connect main window.

Click **Connect**.

The connection progress will display in the Status area at the bottom of the window.

When Internet Connect has established a connection, the **Connect** button will turn into a **Disconnect** button and the Status area will fill with the connection information.

*Tip: You can also initiate a connection by starting an Internet software program such as Netscape as long as you checked **Connect automatically when starting TCP/IP applications** in the PPP Options*



For More Help

- If you have a laptop computer, bring it along with your modem and all cables and manuals to the Computing Support Center, 102 Philosophy Hall, Monday through Thursday, 10am-5pm and Friday, 12 noon - 5pm. **This carry-in service is available for laptop computers only, and you must remain with the consultant while your problem is diagnosed.**
- For telephone support, call the Columbia Computing Helpdesk at 1-212-854-1919, Monday through Thursday, 8am-8pm and Friday, 8am-5pm.
- Send electronic mail to *consultant@columbia.edu*
- Find information about the AcIS modem pool and modems in general at:

<http://www.columbia.edu/acis/access/offcampus/>

rev. 07132003