

# Configuring Your Macintosh for Ethernet: OS 8.6 through 9.x

---

---

## System Requirements

Any new Macintosh can be used for connecting to the Columbia network. If you have an older Macintosh, you should check out the system requirements at

<http://www.columbia.edu/acis/support/supported.html>

The Columbia network supports 10BaseT or 10/100BaseT cards and RJ-45 connectors.

To use wireless networking at Columbia, you will need a PowerBook G3, Titanium G4, or an iBook with an **Apple Airport** card

## Setting Up a Wired Ethernet Connection

### Step 1. Connect Your Computer to the Network

Plug one end of the Ethernet cable into the network card or port in your computer and the other into the Ethernet jack on the wall.

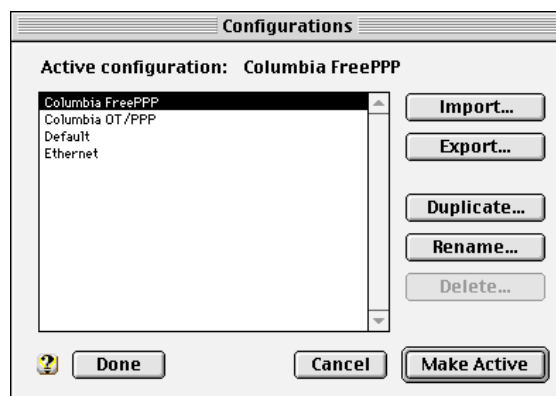
If your Ethernet jack has one orange port, plug your cable directly into that port. If the Ethernet jack has two orange ports, try the one on the right side first, as this is usually the single activated port.

If the jack does not have an orange port, you may have an old-style jack that uses a LanCan. In this case, plug your Ethernet cable into the center port of the LanCan, and then plug the LanCan into the Data port of the jack. If you need a LanCan but don't have one, you should call the Computing Helpdesk at 854-1919.

### Step 2. Configure the TCP/IP Control Panel

1. Open the TCP/IP control panel and select **Configurations...** from the File menu.
2. If an Ethernet configuration is listed, select it and click **Make Active**. Check that the settings look like the screen shot in step 5 below.

If an Ethernet configuration is NOT listed, continue to step 3 and create one.

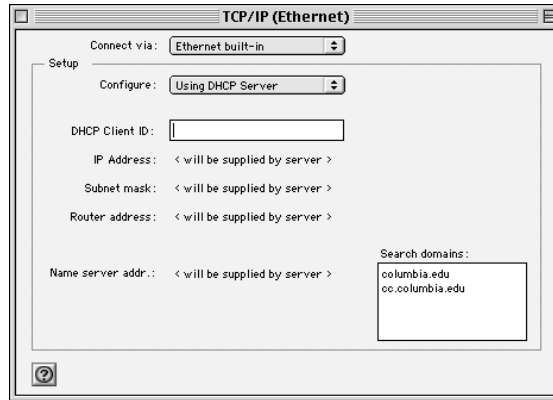


3. To create an Ethernet configuration, select **<Default>** and click **Duplicate**. Type **Ethernet** for the name and click **OK**.
4. Back in the Configurations window, select your newly named connection and click **Make Active**. You will be returned to the TCP/IP window, where you will see the name of your new active configuration in the title bar.

5. Set the connection to **Ethernet** and the **Configure** setting to **Using DHCP Server**.

Some versions of the MacOS have a **DHCP Client ID** field. This should be left blank.

Fill in the information for the **Search domains** as illustrated on the right.



6. Click the close box of the TCP/IP control panel and when asked to save the changes to the current configuration, click **Save**.

### Step 3. Test Your Connection

Test your connection by running a network software program such as Netscape.

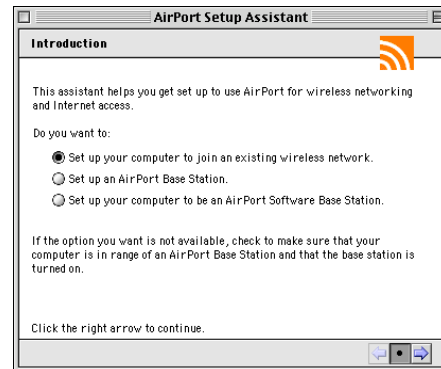
## Setting Up a Wireless Ethernet Connection

### Install the Airport Card

Step 1. Install your Airport card and software according to Apple's directions.

When the Airport Setup Assistant window appears, you can simply close it by clicking in the close box in the upper left corner of the window. **You do not need to use the Airport Setup Assistant.**

**IMPORTANT:** Do NOT set up your Macintosh to be an Airport Software Base Station!



### Use Your Wireless Connection

Step 2. Go to a location on campus where wireless networking is available. The list of access points and coverage areas is at:

<http://www.columbia.edu/acis/networks/wireless/coveragemap.html>

Step 3. Start up your computer and make sure the Airport is turned on. To do this, click the little black arrow in the Airport control strip module (see the diagram on the right) and select **Turn Airport On** if necessary.

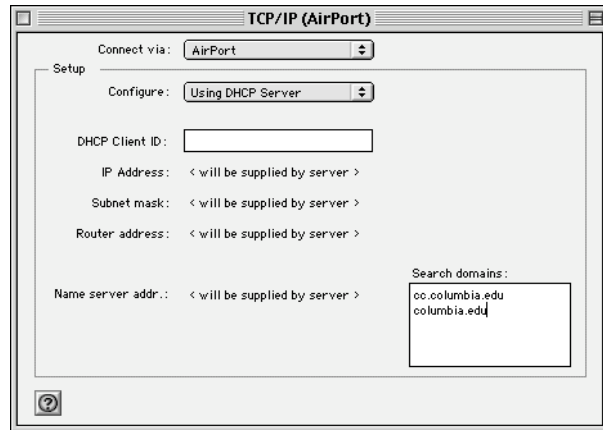


The dots on the Airport control strip module indicate the strength (and speed) of your wireless connection. Three or more green dots means you have a good connection. If you see fewer than three green dots, you may want to move to get better performance. Having no green dots at all means you have no connection at all, and need to move to another location.

Step 4. Open the TCP/IP control panel.

- Set the connection to **Airport**.
- Set **Configure** to **Using DHCP Server**.
- Enter **columbia.edu** and **cc.columbia.edu** in the Search Domains field.

Note that the **DHCP Client ID** field, if present, should remain blank.



Now you can run a network software program such as Netscape Navigator. You should be able to connect to the Internet and browse the Web just as you would with a wired connection.

## Troubleshooting Wireless Connections

If you have trouble getting a wireless network connection, you should check the following:

- **Signal strength.** If the Airport control strip indicates that you have no connection (none of the little dots are green), you should first make sure that you're in a location where wireless networking is available. Check the location map and move if necessary.

*Hint.* You can also tell if you have no connection by looking at the items in the pop-up menu in the Airport control strip module. If the only options you see are **Computer to Computer** and **No Airport Networks in Range**, then you are out of range and need to move. (If you are connected to the Columbia wireless network, you will see the option **Columbia University** with a dot next to it.)

- **Is your Airport card turned on?** If you're in a location where wireless networking is available, make sure your Airport card is turned on. (See step 3 above.)
- If your Airport is already turned on, double-check that you have configured the **TCP/IP Control Panel** correctly, as described in step 4 above.
- **Reboot your computer.** If all else fails, reboot your computer.
- **Password prompt.** If you are prompted for an ID and/or password when you try to connect to the wireless network, it means that you are connecting to a non-AcIS access point. You should report this to [consultant@columbia.edu](mailto:consultant@columbia.edu) and move to a location served by an AcIS access point to try again.

### For More Help

- If you have a laptop computer, bring it to the Computing Support Center, 102 Philosophy Hall, Monday through Thursday, 10am-5pm and Friday, 12 noon - 5pm. **This carry-in service is available for laptop computers only, and you must remain with the consultant while your problem is diagnosed.**
- For telephone support, call the Columbia Computing Helpdesk at 1-212-854-1919, Monday through Thursday, 8am-8pm and Friday, 8am-5pm.
- Send electronic mail to [consultant@columbia.edu](mailto:consultant@columbia.edu)

- Students in URH residence halls should contact their RCC (Residential Computing Consultant) or send electronic mail to *rhno@columbia.edu*. The RHNO Home Page is at:  
<http://www.columbia.edu/acis/rhno>
- For more information about using the campus network, see  
<http://www.columbia.edu/acis/access/oncampus/>
- For information about printing to AcIS printers from URH undergraduate residence hall rooms and Mobile Networking locations, see:  
<http://www.columbia.edu/acis/facilities/printers/>

Rev. 07132003