

FROM: RECOMBINANT DNA: A SHORT COURSE
by WATSON, TOOZE & KURTZ

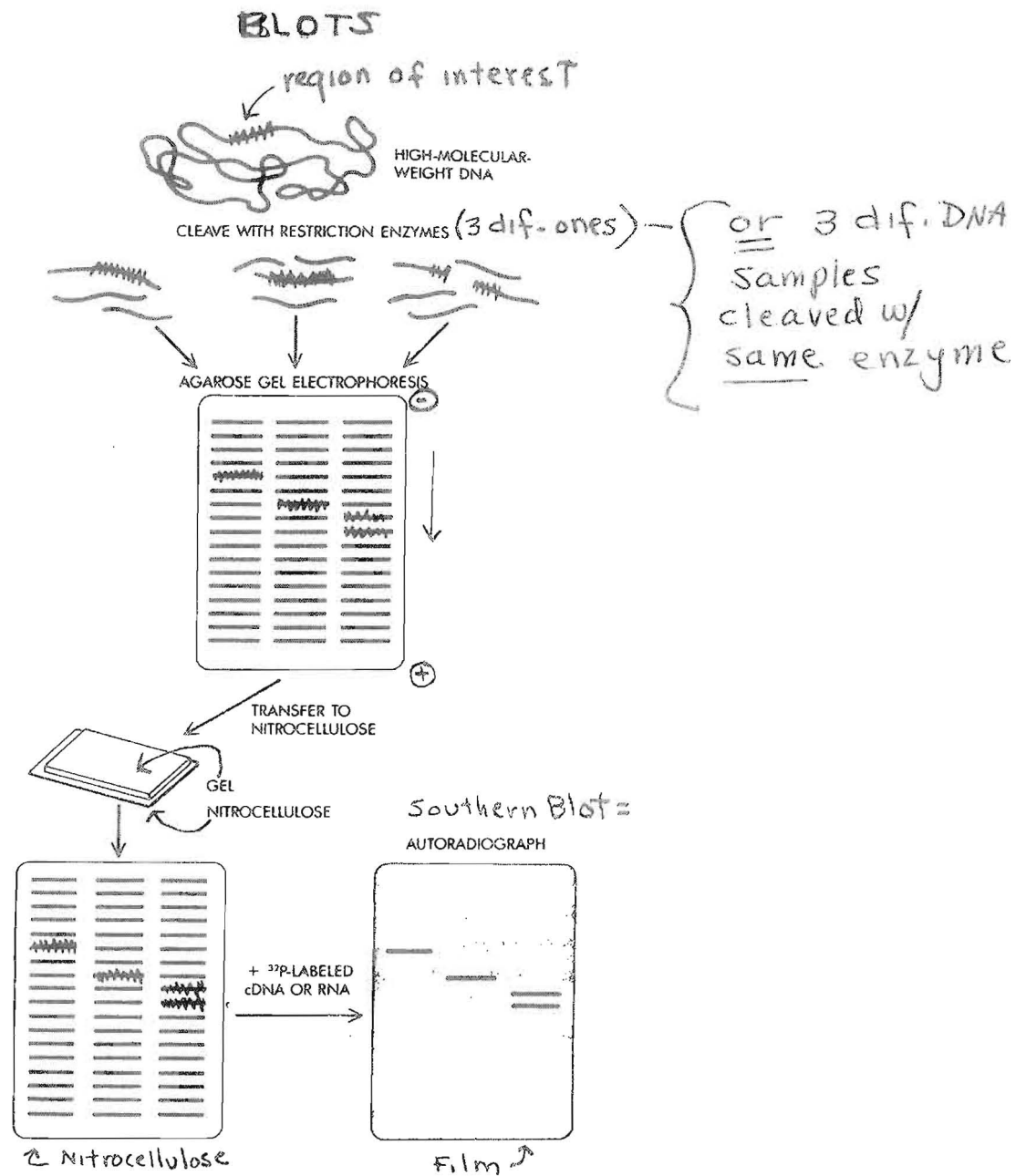


Figure 6-13
Southern blotting. Eukaryotic DNA is cleaved with one or several restriction enzymes. The cleaved DNA is separated by size using agarose gel electrophoresis. The gel is then laid on a piece of nitrocellulose, and a flow of buffer is set up through the gel onto the nitrocellulose. This causes the DNA fragments to flow out of the gel and bind to the filter. A replica of the DNA fragments in the gel is created on the filter. The filter can be hybridized to a suitable labeled probe, and specific DNA fragments that hybridize to the probe will give a signal following autoradiography.