

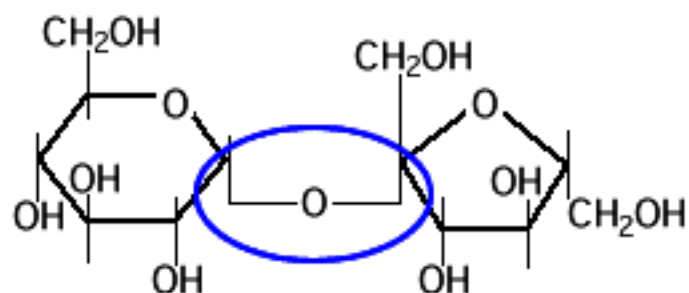
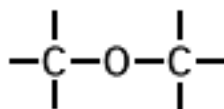
Types of Linkages Between Monomers

NAME

GENERAL
FORMULA

EXAMPLE

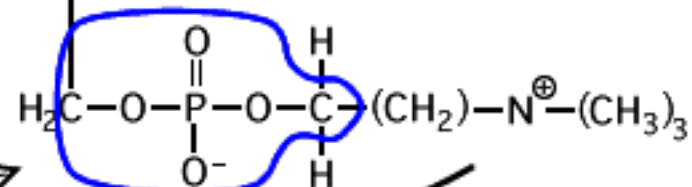
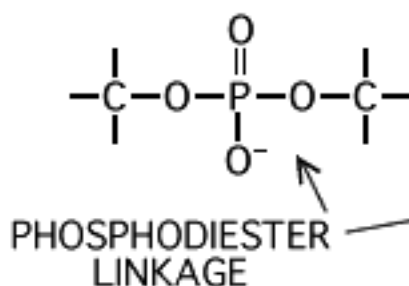
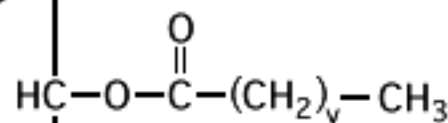
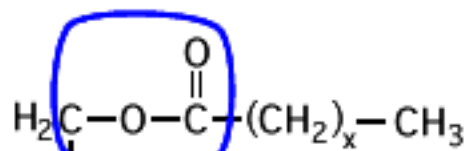
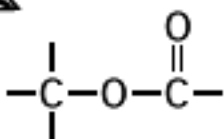
GLYCOSIDIC
LINKAGE



SUCROSE

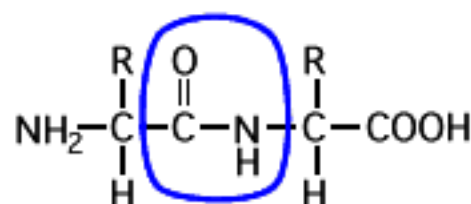
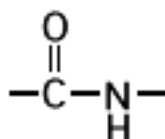
GLUCOSE—FRUCTOSE
(α 1 \rightarrow 2)

ESTER
LINKAGE



LECITHIN
(A PHOSPHOLIPID)

PEPTIDE
LINKAGE



DIPEPTIDE