

## A2E, a byproduct of the visual cycle

Janet R. Sparrow<sup>a,\*</sup>, Nathan Fishkin<sup>b</sup>, Jilin Zhou<sup>a</sup>, Bolin Cai<sup>a</sup>, Young P. Jang<sup>b</sup>,  
Sonja Krane<sup>b</sup>, Yasuhiro Itagaki<sup>b</sup>, Koji Nakanishi<sup>b</sup>

<sup>a</sup> Department of Ophthalmology, Columbia University, 630 W. 168th Street, New York, NY 10032, USA

<sup>b</sup> Department of Chemistry, Columbia University, 630 W. 168th Street, New York, NY 10032, USA

Received 2 June 2003; received in revised form 16 July 2003

### Abstract

A substantial portion of the lipofuscin that accumulates with age and in some retinal disorders in retinal pigment epithelial (RPE) cells, forms as a consequence of light-related vitamin A recycling. Major constituents of RPE lipofuscin are the di-retinal conjugate A2E and its photoisomers. That the accretion of A2E has consequences for the cell, with the adverse effects of A2E being attributable to its amphiphilic structure and its photoreactivity, is consistent with evidence of an association between atrophic age-related macular degeneration (AMD) and excessive lipofuscin accumulation.

© 2003 Elsevier Ltd. All rights reserved.

**Keywords:** Aging; Atrophy; Lipofuscin; Retinal pigment epithelium; Retinoids

### 1. Introduction

Circumstantial evidence gathered over a number of years has implicated retinal pigment epithelial (RPE) lipofuscin in the etiology of atrophic age-related macular degeneration (AMD) (Delori, 1995; Delori, Goger, & Dorey, 2001; Dorey, Wu, Ebenstein, Garsd, & Weiter, 1989; Feeney-Burns, Hilderbrand, & Eldridge, 1984; Holz, Bellman, Staudt, Schutt, & Volcker, 2001; Holz, Bellmann, et al., 1999; von Rückmann, Fitzke, & Bird, 1997). Although the lipofuscin present in many non-dividing cell-types is thought to be derived in large part from lipid peroxidation products (Eldred & Katz, 1989; Eldred, Miller, Stark, & Feeney-Burns, 1982), more than 90% of the lipofuscin amassed in RPE cells originates from conjugates formed by visual cycle retinoids in photoreceptor cells (Katz, Drea, & Robison, 1986; Katz, Eldred, & Robison, 1987; Katz & Redmond, 2001). This material is then deposited in RPE cells subsequent to outer segment disc phagocytosis (Katz, Drea, Eldred, Hess, & Robison, 1986) and since it cannot be enzymatically degraded, it accumulates. RPE lipofuscin fluorophores are amassed with age (Delori et al., 2001;

Feeney-Burns et al., 1984; Okubo et al., 1999; von Rückmann et al., 1997; Weiter, Delori, Wing, & Fitch, 1986; Wing, Blanchard, & Weiter, 1978) and the greatest accretion is in RPE cells underlying the macula (Dorey et al., 1989; Feeney-Burns et al., 1984; Weiter et al., 1986; Wing et al., 1978). The lipofuscin in RPE cells is also the source of the intrinsic fluorescence that emanates from the fundus (Delori, 1995; Delori, Dorey, et al., 1995). Indeed, monitoring of fundus autofluorescence by confocal ophthalmoscopy has established that zones of RPE exhibiting intense autofluorescence are prone to atrophy (Holz et al., 2001; Holz, Bellmann, et al., 1999; von Rückmann et al., 1997).

### 2. RPE lipofuscin fluorophores generated from visual cycle flux of all-*trans*-retinal

The only fluorophores of RPE lipofuscin that have been characterized as yet, are A2E (Ben-Shabat, Parish, et al., 2002; Eldred & Lasky, 1993; Parish, Hashimoto, Nakanishi, Dillon, & Sparrow, 1998; Ren, Sakai, & Nakanishi, 1997; Sakai, Decatur, Nakanishi, & Eldred, 1996), iso-A2E (Parish et al., 1998), and other less abundant photoisomers of A2E (Ben-Shabat, Parish, et al., 2002) (Fig. 1), all of which are generated by phosphate hydrolysis of the precursor, A2-PE, a

\* Corresponding author. Tel.: +1-212-305-9944; fax: +1-212-305-9638.

E-mail address: [jrs88@columbia.edu](mailto:jrs88@columbia.edu) (J.R. Sparrow).

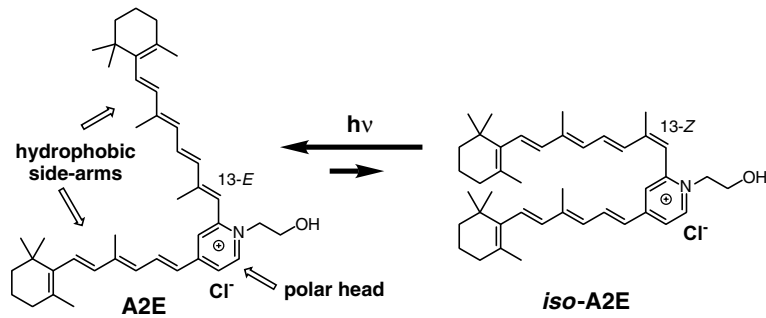


Fig. 1. Structure of the pyridinium bisretinoid, A2E. The hydrophobic side-arms derived from all-*trans*-retinal, together with a hydrophilic portion, confer amphiphilic properties on A2E. In vivo, the counterion of the pyridinium moiety is probably chloride. Iso-A2E, a *cis* olefin at the C13-14 position, is more streamlined than the wedge-shaped A2E. The photoisomers A2E and iso-A2E achieve equilibrium at a ratio of 4:1.

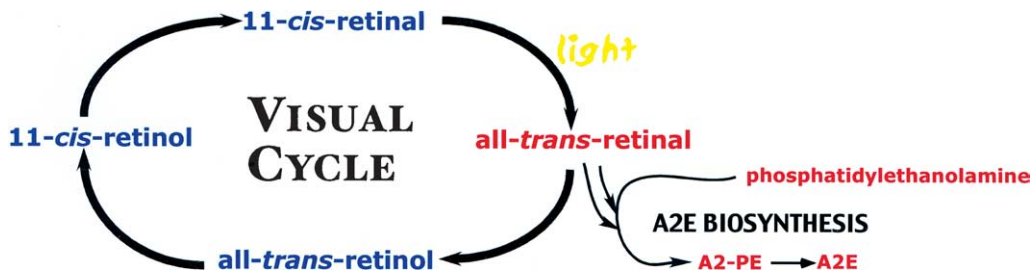


Fig. 2. The visual cycle and A2E formation. A2E biosynthesis begins in photoreceptor outer segments when all-*trans*-retinal leaves the visual cycle to react with phosphatidylethanolamine (ratio, 2:1). The precursor A2-PE is generated in a multi-step synthetic process, with A2E being released after phosphate hydrolysis.

phosphatidyl-pyridinium bisretinoid (Liu, Itagaki, Ben-Shabat, Nakanishi, & Sparrow, 2000) (Fig. 2). A2-PE forms as a byproduct of the visual cycle, its synthesis from all-*trans*-retinal occurring when molecules of all-*trans*-retinal, rather than undergoing reduction to retinol, react with phosphatidylethanolamine (PE) (Liu et al., 2000; Mata, Weng, & Travis, 2000; Parish et al., 1998). The initial Schiff-base conjugate (*N*-retinylidene-PE; NRPE) that forms between a single all-*trans*-retinal and PE (Liu et al., 2000; Sun, Molday, & Nathans, 1999; Weng et al., 1999) may serve as a substrate for ABCA4 (ABCR), the photoreceptor-specific ATP-binding cassette transporter (Molday & Molday, 1979; Molday, Rabin, & Molday, 2000; Papermaster, Schneider, Zorn, & Kraehenbuhl, 1978; Sun & Nathans, 1997; Sun & Nathan, 2001) that is thought to move all-*trans*-retinal to the cytosolic side of the disc membrane (Ahn, Wong, & Molday, 2000; Illing, Molday, & Molday, 1997; Sun & Nathans, 1997; Sun & Nathan, 2001; Weng et al., 1999) where it is accessible to retinol dehydrogenase, the enzyme responsible for its reduction to all-*trans*-retinol (Saari, Garwin, Van Hooser, & Palczewski, 1998). The reaction of NRPE with a second all-*trans*-retinal to form a molecule of A2-PE (Liu et al., 2000; Parish et al., 1998), is likely to occur very infrequently and probably only when circumstances, including high levels of illumination (Saari et al., 1998), increase the availability of all-*trans*-retinal. Accordingly, the observation that exposure to bright light favors A2-PE formation

(Ben-Shabat, Parish, et al., 2002), is perhaps explained by light-driven release of all-*trans*-retinal and supports the concept of a relationship between cumulative light exposure and the accretion of A2E by RPE.

### 3. Evidence supporting a link between RPE lipofuscin and atrophy

The relationship between lipofuscin accumulation and retinal degeneration is illustrated by Stargardt disease, a macular degeneration of juvenile onset that is caused by mutations in both alleles of the *ABCR* (*ABCA4*) gene (Allikmets et al., 1997; Shroyer, Lewis, Yatsenko, & Lupski, 2001; Shroyer, Lewis, Yatsenko, Wensel, & Lupski, 2001; Yatsenko, Shroyer, Lewis, & Lupski, 2001). Stargardt disease is also characterized by copious accumulation of RPE lipofuscin (Delori, Staurenghi, et al., 1995; Eagle, Lucier, Bernardino, & Yanoff, 1980; Lois, Holder, Fitzke, Plant, & Bird, 1999; Lopez, Maumenee, de la Cruz, & Green, 1990). Work with a mouse model of Stargardt disease, the *ABCR* null mutant, has shown that the abundant lipofuscin that accompanies a loss of ABCR activity is attributable, at least in part, to elevated A2E levels (Mata et al., 2001; Mata et al., 2000; Weng et al., 1999). Moreover, the means by which *ABCR* mutations predispose to RPE atrophy in Stargardt disease can be understood from what is known about the harmful effects of A2E on cell

function and viability. Several consequences of A2E accumulation have been described (Holz, Schutt, et al., 1999; Schutt, Davies, Kopitz, Holz, & Boulton, 2000; Sparrow, Nakanishi, & Parish, 2000; Sparrow, Parish, Hashimoto, & Nakanishi, 1999; Suter et al., 2000), all of which can probably be explained by two properties of the compound: its detergent-like structure and its photoreactivity.

#### 4. A2E as an amphiphile

The hydrophobic side-arms of A2E, together with its positively charged hydrophilic head group, confer on A2E an amphiphilic structure (Sakai et al., 1996) (Fig. 1). There seems to be little doubt that the side-arms of A2E intercalate into the hydrophobic core of the membrane bilayer, since the emission maximum of cell-associated A2E corresponds most closely to that observed in non-polar solvents (Sparrow et al., 1999). Less clear is the behavior of the polar pyridinium moiety; the nature of its affinity for the counterion (probably chloride) is likely to be a factor influencing its movement with the lipid bilayer. For instance, the mode in which it penetrates the membrane may be influenced by electrostatic attraction with negatively charged phosphatidylserine (Raucher & Sheetz, 2001).

Studies using the plasma membrane as a model to evaluate the effects of A2E on a phospholipid bilayer, showed that when presented to membranes at high concentrations, A2E induced concentration dependent loss of membrane integrity, with membrane permeabilization being evidenced by the egress of lactate dehydrogenase from the cytoplasm and by the labeling of nuclei with a cell-impermeant dye (Sparrow et al., 1999). These observations were later confirmed in studies demonstrating the ability of A2E to solubilize the lipid bilayer of unilamellar vesicles (De & Sakmar, 2002). A2E-induced membrane blebbing provides further evidence of the tendency for A2E, at high concentration, to perturb membrane stability (Fig. 3). In these studies, a lentivirus vector was used to transduce wild-type GFP (Lai et al., 1999) in ARPE-19 cells such that the cytosol-filled membrane blisters were labeled as they formed. Work with other amphiphiles has shown that the loss in cytoskeletal-membrane adhesion that accompanies bleb formation results from a physically induced biochemical change in the membrane (Dai & Sheetz, 1999). Whether A2E-mediated blebbing also represents a biochemical change in the membrane is not yet clear.

While unilamellar vesicles and the plasma membrane have been used experimentally as model lipid bilayers, interactions of A2E and the lysosomal membranes would presumably be more biologically relevant, since it

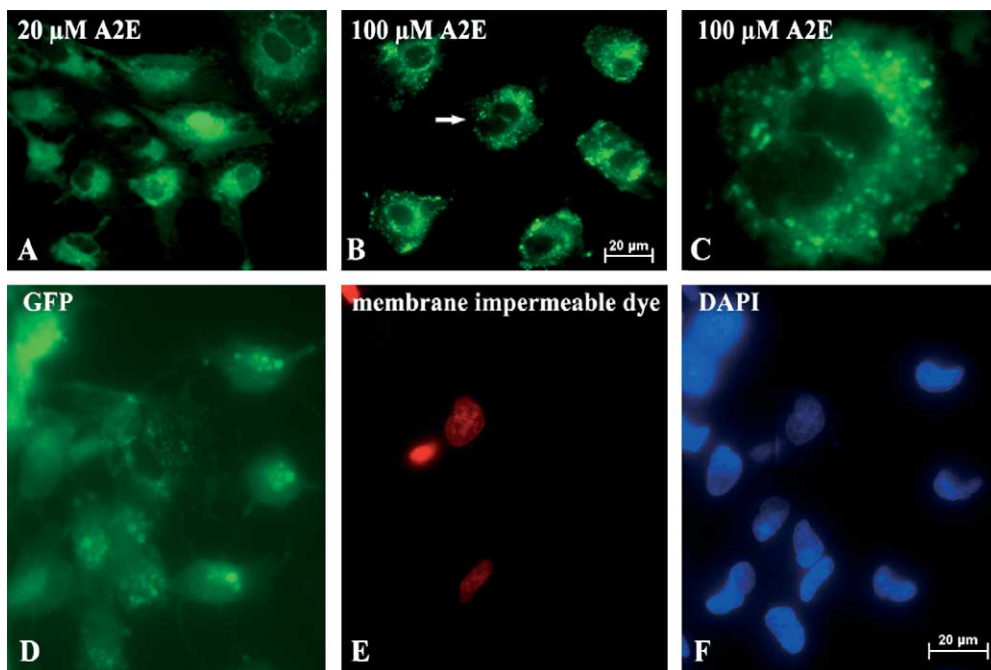


Fig. 3. A2E induces membrane blebbing. With the plasma membrane serving as a model bilayer, a lentiviral vector was used to transduce green fluorescent protein (GFP) in ARPE-19 cells; since wild-type GFP is localized to the cytoplasm and diffuses throughout, it served to fill the membrane blisters as they formed. A2E was introduced to cultured ARPE-19 cells at 20  $\mu\text{M}$  (A) and 100  $\mu\text{M}$  (B) concentrations. The small evaginations formed with 100  $\mu\text{M}$  A2E are typical of membrane blebs. The cell at the arrow in (B) is shown at higher magnification in (C). At least during the early stages of bleb formation, the impermeability of the plasma membrane was retained since many cells exhibiting blebs (D), exclude a membrane impermeable dye (dead red; molecular probes) such that the dye does not label nuclei (E) that are otherwise stained by DAPI (4',6-diamidino-2-phenylindole) (F).

is within intracellular lysosomal storage bodies that A2E accumulates. Accordingly, intracellular A2E reduces the acidity of these organelles (Holz, Schutt, et al., 1999), although it does not directly inhibit the activities of lysosomal enzymes (Berman, Schutt, Holz, & Kopitz, 2001). The latter observation is significant, since a failure of proteolytic digestion, brought about by the inhibitory effects of existing lipofuscin pigments, has been suggested to promote further lipofuscinogenesis. Interestingly, just as A2E accumulates in the lysosomal compartment in vivo, it becomes sequestered within the same organelles when introduced to cells in culture (Sparrow et al., 1999); but why it does so and why it remains there, is not clear.

### 5. Light-mediated damage to A2E-laden RPE

Light is not only essential to the formation of A2E, it may also be a factor involved in the adverse effects of A2E on RPE cells. Specifically, the blue region of the spectrum has a marked ability to induce apoptosis of A2E-laden RPE cells (Schutt et al., 2000; Sparrow & Cai, 2001; Sparrow et al., 2000) while RPE cells devoid of A2E remain unaffected. That green light is far less damaging, reflects a wavelength dependency consistent with the excitation spectrum of A2E. Investigations of the photochemical events that trigger the cell death have revealed that upon blue light irradiation, A2E self-generates singlet oxygen. The latter then proceeds to react with A2E at carbon–carbon double bonds along the retinoid-derived side-arms of the molecule to form epoxides (Ben-Shabat, Itagaki, et al., 2002; Sparrow et al., 2002) (Fig. 4). These highly reactive epoxides (A2E-epoxides), rather than singlet oxygen, may be the intermediates that ravage the cells, since singlet oxygen diffuses only a short distance in the cells (10–20 nm) yet DNA damage has been observed in blue light illuminated A2E-laden RPE cells (Sparrow, Zhou, & Cai, 2003). Moreover, much of the singlet oxygen generated by A2E is quenched by this bis-retinoid (Ben-Shabat, Itagaki, et al., 2002), and the resulting A2E-epoxides have been shown to induce DNA lesions, including oxidatively modified guanine bases (Sparrow et al., 2003). Nor is DNA the only cellular macromolecule with which A2E-epoxides are likely to form conjugates, because the latter are highly reactive electrophiles that are readily attacked by sulfhydryl and amino groups of proteins. In short, it is likely the generation of epoxide that enables A2E to be more phototoxic than would be expected on the basis of its photophysical properties. This is the case for some classes of potent photosensitizers that have relatively low singlet oxygen yields, but which react with singlet oxygen to generate harmful photooxidation products (Bunting, 1992; Delaey et al., 2000; Krieg & Bilitz, 1996). It is of interest that the

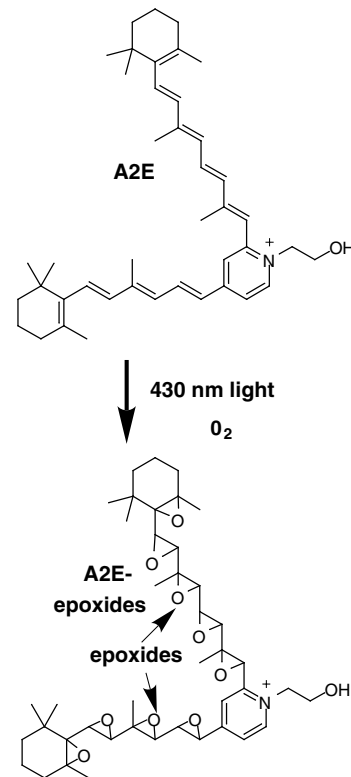


Fig. 4. A2E epoxidation. Irradiation of A2E leads to the generation of singlet oxygen with the latter adding to carbon–carbon double bonds to form epoxides (A2E-epoxides). Photooxidized A2E consists of a mixture of compounds exhibiting epoxides of varying numbers including the non-aoxirane illustrated here.

natural antioxidants vitamins E and C, which have been reported to aid in the defense against progression of AMD (Age-Related Eye Disease Study, 2001; Beatty, Koh, Henson, & Boulton, 2000; Snodderly, 1995), were also shown to suppress A2E-epoxidation (Sparrow et al., 2003), suggesting that one mechanism by which these vitamins may protect is by restraining the damage that ensues from A2E photooxidation.

### 6. Additional putative fluorophores

Whether other fluorophores in addition to A2E and its photoisomers contribute to RPE lipofuscin is not yet clear. However, we have recently shown that all-*trans*-retinal at high concentration forms covalent bonds at three lysine residues in rhodopsin to generate fluorescent bis-retinoid adducts having emission spectra similar to A2E (Fishkin, Jang, Itagaki, Sparrow, & Nakanishi, 2003) (Fig. 5). While A2-PE formation is favored over this fluorescent all-*trans*-retinal-rhodopsin adduct (A2-rhodopsin), the generation of A2-PE appears to saturate at three equivalents (relative to rhodopsin) of retinal, with A2-rhodopsin being generated thereafter. The accumulation of A2-rhodopsin in seasoned photoreceptor outer segments may be significant in terms of reducing

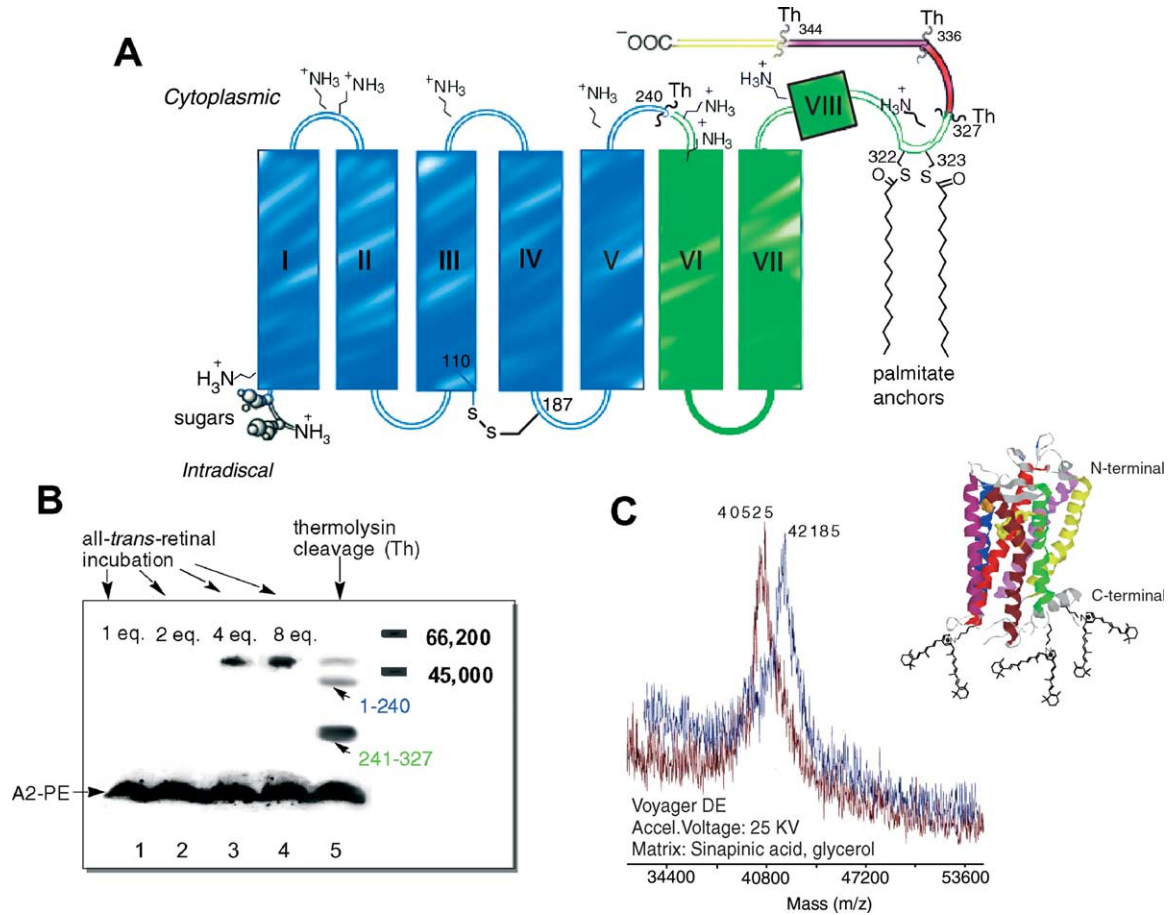


Fig. 5. Covalent adduct formation between all-*trans*-retinal and rhodopsin (A2-rhodopsin). (A) Structure of rhodopsin showing the eight helical segments together with the intradiscal and cytoplasmic loops. Sites at which thermolysin cleaves, are shown (Th). (B) Probing for A2-rhodopsin by denaturing SDS-PAGE with fluorescence detection (>525 emission). Isolated bovine outer segments were incubated with 1, 2, 4 or 8 equivalents of all-*trans*-retinal (relative to rhodopsin) (lanes 1–4). At 4 and 8 equivalents, fluorescent bands appeared that co-migrated with rhodopsin. Proteolysis by thermolysin (lane 5; sample as in lane 4), which is known to cleave rhodopsin at Ser-240 and Leu-328 (Imamoto, Kataoka, Tokunaga, & Palczewski, 2000), released the expected cleavage products corresponding to residues 1–240 (~26 kDa) and 241–327 (~12 kDa) of rhodopsin. The fragment comprising rhodopsin helices VI–VIII (241–327) exhibits a fluorescence intensity that is twice that of the I–V (1–240) fragment, suggesting that more all-*trans*-retinal adducts formed on the VI–VIII fragment. (C) MALDI-TOF mass spectral verification of covalent attachment of all-*trans*-retinal to rhodopsin. The 1660 Da shift (40,525 versus 42,185) relative to native rhodopsin is consistent with the addition of 6 retinals and removal of 6 water molecules and reveals the attachment of 3 bisretinoids (i.e. 2 retinal moieties at each of 3 positions) on rhodopsin. These all-*trans*-retinal adducts are likely to form by Schiff base reaction with the  $\epsilon$ -amino group of lysine residues. Thus, given the more intense fluorescence of the 241–327 fragment (B), 2 bisretinoids must form at solvent exposed lysines (245, 248, 311 and 325) in the third cytoplasmic loop and/or the 8th helix, and 1 bisretinoid must be located in the 1–240 fragment.

the light sensitivity of rhodopsin; it may also, along with A2-PE, explain the necessity for constant replacement of photoreceptor outer segment membrane by the processes of disc assembly and shedding. Furthermore, the formation of these bisretinoid adducts in photoreceptor outer segments may be a sign that fluorescent peptide fragments bearing A2-moieties become deposited within RPE cells following outer segment phagocytosis.

### 7. Summary

Given the evidence that RPE lipofuscin is derived, for the most part, from retinoids that leave the visual cycle

(Katz & Redmond, 2001), it is not surprising that the accumulation of RPE lipofuscin is most marked in central retina, the area having the greatest concentration of visual chromophore (Faulkner & Kemp, 1984; Liem, Keunen, & Van Norren, 1996; Tournow & Stilling, 1998), and thus the most pronounced capacity for photon catch. The foregoing, together with evidence indicating that life-time accumulations of lipofuscin can, under some circumstances, reach levels that provoke RPE atrophy, suggests that the light capturing function of the retina underlies mechanisms leading to macular degeneration. This concept is not new (Young, 1987; Young, 1988). Yet, studies aimed at forging a link between the incidence of AMD and life-time light exposure

have yielded inconsistent findings (Cruickshanks, Klein, & Klein, 1993; Darzins, Mitchell, & Heller, 1997; Taylor et al., 1992; West et al., 1989). Mounting evidence for the role of light in driving the formation of the RPE lipofuscin fluorophore A2E, together with the knowledge that this lipofuscin fluorophore can confer a susceptibility to blue light damage, begs a re-examination of this issue.

## Acknowledgements

This work was supported by National Institutes of Health grants EY 12951 (JRS) and GM 36564 (KN) and by grants from Macula Vision Research Foundation, American Health Assistance Foundation, and Fight for Sight. The Department of Ophthalmology, Columbia University, is a recipient of unrestricted funds from Research to Prevent Blindness.

## References

- Age-Related Eye Disease Study Group (2001). A randomized, placebo-controlled clinical trial of high-dose supplementation with vitamins C and E, beta carotene, and zinc for age-related macular degeneration and vision loss. AREDS Report No. 8. *Archives of Ophthalmology*, *119*, 1417–1436.
- Ahn, J., Wong, J. T., & Molday, R. S. (2000). The effect of lipid environment and retinoids on the ATPase activity of ABCR, the photoreceptor ABC transporter responsible for Stargardt macular dystrophy. *Journal of Biological Chemistry*, *275*, 20399–20405.
- Allikmets, R., Singh, N., Sun, H., Shroyer, N. F., Hutchinson, A., Chidambaram, A., Gerrard, B., Baird, L., Stauffer, D., Peiffer, A., Rattner, A., Smallwood, P., Li, Y., Anderson, K. L., Lewis, R. A., Nathans, J., Leppert, M., Dean, M., & Lupski, J. R. (1997). A photoreceptor cell-specific ATP-binding transporter gene (ABCR) is mutated in recessive Stargardt macular dystrophy. *Nature Genetics*, *15*, 236–246.
- Beatty, S., Koh, H.-H., Henson, D., & Boulton, M. (2000). The role of oxidative stress in the pathogenesis of age-related macular degeneration. *Survey of Ophthalmology*, *45*, 115–134.
- Ben-Shabat, S., Itagaki, Y., Jockusch, S., Sparrow, J. R., Turro, N. J., & Nakanishi, K. (2002). Formation of a nona-oxirane from A2E, a lipofuscin fluorophore related to macular degeneration, and evidence of singlet oxygen involvement. *Angewandte Chemie-International Edition*, *41*, 814–817.
- Ben-Shabat, S., Parish, C. A., Vollmer, H. R., Itagaki, Y., Fishkin, N., Nakanishi, K., & Sparrow, J. R. (2002). Biosynthetic studies of A2E, a major fluorophore of RPE lipofuscin. *Journal of Biological Chemistry*, *277*, 7183–7190.
- Berman, M., Schutt, F., Holz, F. G., & Kopitz, J. (2001). Does A2E, a retinoid component of lipofuscin and inhibitor of lysosomal degradative functions, directly affect the activity of lysosomal hydrolases. *Experimental Eye Research*, *72*, 191–195.
- Bunting, J. R. (1992). A test of the singlet oxygen mechanism of cationic dye photosensitization of mitochondrial damage. *Photochemistry and Photobiology*, *55*, 81–87.
- Cruickshanks, K. J., Klein, R., & Klein, B. E. K. (1993). Sunlight and age-related macular degeneration. *Archives of Ophthalmology*, *111*, 514–518.
- Dai, J., & Sheetz, M. P. (1999). Membrane tether formation from blebbing cells. *Biophysical Journal*, *77*, 3363–3370.
- Darzins, P., Mitchell, P., & Heller, R. F. (1997). Sun exposure and age-related macular degeneration. An Australian case-control study. *Ophthalmology*, *104*, 770–776.
- De, S., & Sakmar, T. P. (2002). Interaction of A2E with model membranes. Implications to the pathogenesis of age-related macular degeneration. *Journal of Genetic Physiology*, *120*, 147–157.
- Delaey, E., van Laar, F., De Vos, D., Kamuhabwa, A., Jacobs, P., & de Witte, P. (2000). A comparative study of the photosensitizing characteristics of some cyanine dyes. *Journal of Photochemistry and Photobiology B*, *55*, 27–36.
- Delori, F. C. (1995). RPE lipofuscin in ageing and age-related macular degeneration. In G. Coscas, & F. C. Piccolino (Eds.), *Retinal Pigment Epithelium and Macular Disease (Documenta Ophthalmologica)* (vol. 62, pp. 37–45). Dordrecht, The Netherlands: Kluwer Academic Publishers.
- Delori, F. C., Dorey, C. K., Staurengi, G., Arend, O., Goger, D. G., & Weiter, J. J. (1995). In vivo fluorescence of the ocular fundus exhibits retinal pigment epithelium lipofuscin characteristics. *Investigative Ophthalmology and Visual Science*, *36*, 718–729.
- Delori, F. C., Goger, D. G., & Dorey, C. K. (2001). Age-related accumulation and spatial distribution of lipofuscin in RPE of normal subjects. *Investigative Ophthalmology and Visual Science*, *42*, 1855–1866.
- Delori, F. C., Staurengi, G., Arend, O., Dorey, C. K., Goger, D. G., & Weiter, J. J. (1995). In vivo measurement of lipofuscin in Stargardt's disease—Fundus flavimaculatus. *Investigative Ophthalmology and Visual Science*, *36*, 2327–2331.
- Dorey, C. K., Wu, G., Ebenstein, D., Garsd, A., & Weiter, J. J. (1989). Cell loss in the aging retina. Relationship to lipofuscin accumulation and macular degeneration. *Investigative Ophthalmology and Visual Science*, *30*, 1691–1699.
- Eagle, R. C., Lucier, A. C., Bernardino, V. B., & Yanoff, M. (1980). Retinal pigment epithelial abnormalities in fundus flavimaculatus. *Ophthalmology*, *87*, 1189–1200.
- Eldred, G. E., & Katz, M. L. (1989). The autofluorescent products of lipid peroxidation may not be lipofuscin-like. *Free Radical Biology and Medicine*, *7*, 157–163 [see comments].
- Eldred, G. E., & Lasky, M. R. (1993). Retinal age pigments generated by self-assembling lysosomotropic detergents. *Nature*, *361*, 724–726.
- Eldred, G. E., Miller, G. V., Stark, W. S., & Feeney-Burns, L. (1982). Lipofuscin: resolution of discrepant fluorescence data. *Science*, *216*, 757–758.
- Faulkner, D. J., & Kemp, C. M. (1984). Human rhodopsin measurement using a TV-based imaging fundus reflectometer. *Vision Research*, *24*, 221–231.
- Feeney-Burns, L., Hilderbrand, E. S., & Eldridge, S. (1984). Aging human RPE: morphometric analysis of macular, equatorial, and peripheral cells. *Investigative Ophthalmology and Visual Science*, *25*, 195–200.
- Fishkin, N., Jang, Y. P., Itagaki, Y., Sparrow, J. R., & Nakanishi, K. (2003). A2-rhodopsin: a new fluorophore isolated from photoreceptor outer segments. *Organic and Biomolecular Chemistry*, *1*, 1101–1105.
- Holz, F. G., Bellmann, C., Margaritidis, M., Schutt, F., Otto, T. P., & Volcker, H. E. (1999). Patterns of increased in vivo fundus autofluorescence in the junctional zone of geographic atrophy of the retinal pigment epithelium associated with age-related macular degeneration. *Graefes' Archive for Clinical and Experimental Ophthalmology*, *237*, 145–152.
- Holz, F. G., Bellman, C., Staudt, S., Schutt, F., & Volcker, H. E. (2001). Fundus autofluorescence and development of geographic atrophy in age-related macular degeneration. *Investigative Ophthalmology and Visual Science*, *42*, 1051–1056.
- Holz, F. G., Schutt, F., Kopitz, J., Eldred, G. E., Kruse, F. E., Volcker, H. E., & Cantz, M. (1999). Inhibition of lysosomal degradative functions in RPE cells by a retinoid component of

- lipofuscin. *Investigative Ophthalmology and Visual Science*, 40, 737–743.
- Illing, M., Molday, L. L., & Molday, R. S. (1997). The 220-kDa rim protein of retinal rod outer segments is a member of the ABC transporter superfamily. *Journal of Biological Chemistry*, 272, 10303–10310.
- Imamoto, Y., Kataoka, M., Tokunaga, F., & Palczewski, K. (2000). Light-induced conformational changes of rhodopsin probed by fluorescent alexa594 immobilized on the cytoplasmic surface. *Biochemistry*, 39, 15225–15233.
- Katz, M. L., Drea, C. M., Eldred, G. E., Hess, H. H., & Robison, W. G., Jr. (1986). Influence of early photoreceptor degeneration on lipofuscin in the retinal pigment epithelium. *Experimental Eye Research*, 43, 561–573.
- Katz, M. L., Drea, C. M., & Robison, W. G., Jr. (1986). Relationship between dietary retinol and lipofuscin in the retinal pigment epithelium. *Mechanisms of Ageing and Development*, 35, 291–305.
- Katz, M. L., Eldred, G. E., & Robison, W. G., Jr. (1987). Lipofuscin autofluorescence: evidence for vitamin A involvement in the retina. *Mechanisms of Ageing and Development*, 39, 81–90.
- Katz, M. L., & Redmond, T. M. (2001). Effect of Rpe65 knockout on accumulation of lipofuscin fluorophores in the retinal pigment epithelium. *Investigative Ophthalmology and Visual Science*, 42, 3023–3030.
- Krieg, M., & Bilitz, J. M. (1996). Structurally modified trimethine thiacyanine dyes. *Biochemical Pharmacology*, 51, 1461–1467.
- Lai, C., Gouras, P., Doi, K., Lu, F., Kjeldbye, H., Goff, S. P., Pawliuk, R., Leboulch, P., & Tsang, S. H. (1999). Tracking RPE transplants labeled by retroviral gene transfer with green fluorescent protein. *Investigative Ophthalmology and Visual Science*, 40, 2141–2146.
- Liem, A. T. A., Keunen, J. E. E., & Van Norren, D. (1996). Clinical applications of fundus reflection densitometry. *Survey of Ophthalmology*, 41, 37–50.
- Liu, J., Itagaki, Y., Ben-Shabat, S., Nakanishi, K., & Sparrow, J. R. (2000). The biosynthesis of A2E, a fluorophore of aging retina, involves the formation of the precursor, A2-PE, in the photoreceptor outer segment membrane. *Journal of Biological Chemistry*, 275, 29354–29360.
- Lois, N., Holder, G. E., Fitzke, F. W., Plant, C., & Bird, A. C. (1999). Intrafamilial variation of phenotype in Stargardt macular dystrophy-fundus flavimaculatus. *Investigative Ophthalmology and Visual Science*, 40, 2668–2675.
- Lopez, P. F., Maumenee, I. H., de la Cruz, Z., & Green, W. R. (1990). Autosomal-dominant fundus flavimaculatus. Clinicopathologic correlation. *Ophthalmology*, 97, 798–809.
- Mata, N. L., Tzekov, R. T., Liu, X., Weng, J., Birch, D. G., & Travis, G. H. (2001). Delayed dark adaptation and lipofuscin accumulation in *abcr* ± mice: implications for involvement of ABCR in age-related macular degeneration. *Investigative Ophthalmology and Visual Science*, 42, 1685–1690.
- Mata, N. L., Weng, J., & Travis, G. H. (2000). Biosynthesis of a major lipofuscin fluorophore in mice and humans with ABCR-mediated retinal and macular degeneration. *Proceedings of the National Academy of Sciences of the United States of America*, 97, 7154–7159.
- Molday, R. S., & Molday, L. L. (1979). Identification and characterization of multiple forms of rhodopsin and minor proteins in frog and bovine outer segment disc membranes. Electrophoresis, lectin labeling and proteolysis studies. *Journal of Biological Chemistry*, 254, 4653–4660.
- Molday, L. L., Rabin, A. R., & Molday, R. S. (2000). ABCR expression in foveal cone photoreceptors and its role in Stargardt macular dystrophy. *Nature Genetics*, 25, 257–258.
- Okubo, A., Rosa, R. H. J., Bunce, C. V., Alexander, R. A., Fan, J. T., Bird, A. C., & Luthert, P. J. (1999). The relationships of age changes in retinal pigment epithelium and Bruch's membrane. *Investigative Ophthalmology and Visual Science*, 40, 443–449.
- Papermaster, D. S., Schneider, B. G., Zorn, M. A., & Kraehenbuhl, J. P. (1978). Immunocytochemical localization of a large intrinsic membrane protein to the incisures and margins of frog rod outer segment disks. *Journal of Cell Biology*, 78, 415–425.
- Parish, C. A., Hashimoto, M., Nakanishi, K., Dillon, J., & Sparrow, J. R. (1998). Isolation and one-step preparation of A2E and iso-A2E, fluorophores from human retinal pigment epithelium. *Proceedings of the National Academy of Sciences of the United States of America*, 95, 14609–14613.
- Raucher, D., & Sheetz, M. P. (2001). Phospholipase C activation by anesthetics decreases membrane-cytoskeleton adhesion. *Journal of Cell Science*, 114, 3759–3766.
- Ren, R. F., Sakai, N., & Nakanishi, K. (1997). Total synthesis of the ocular age pigment A2E: a convergent pathway. *Journal of the American Chemical Society*, 119, 3619–3620.
- Saari, J. C., Garwin, G. G., Van Hooser, J. P., & Palczewski, K. (1998). Reduction of all-*trans*-retinal limits regeneration of visual pigment in mice. *Vision Research*, 38, 1325–1333.
- Sakai, N., Decatur, J., Nakanishi, K., & Eldred, G. E. (1996). Ocular age pigment "A2E": An unprecedented pyridinium bisretinoid. *Journal of the American Chemical Society*, 118, 1559–1560.
- Schutt, F., Davies, S., Kopitz, J., Holz, F. G., & Boulton, M. E. (2000). Photodamage to human RPE cells by A2-Ea retinoid component of lipofuscin. *Investigative Ophthalmology and Visual Science*, 41, 2303–2308.
- Shroyer, N. F., Lewis, R. A., Yatsenko, A. N., & Lupski, J. R. (2001). Null missense ABCR (ABCA4) mutations in a family with Stargardt disease and retinitis pigmentosa. *Investigative Ophthalmology and Visual Science*, 42, 2757–2761.
- Shroyer, N. F., Lewis, R. A., Yatsenko, A. N., Wensel, T. G., & Lupski, J. R. (2001). Cosegregation and functional analysis of mutant ABCR (ABCA4) alleles in families that manifest both Stargardt disease and age-related macular degeneration. *Human Molecular Genetics*, 10, 2671–2678.
- Snodderly, D. M. (1995). Evidence for protection against age-related macular degeneration by carotenoids and antioxidant vitamins. *American Journal of Clinical Nutrition*, 62(Suppl.), 1448S–1461S.
- Sparrow, J. R., & Cai, B. (2001). Blue light-induced apoptosis of A2E-containing RPE: involvement of caspase-3 and protection by Bcl-2. *Investigative Ophthalmology and Visual Science*, 42, 1356–1362.
- Sparrow, J. R., Nakanishi, K., & Parish, C. A. (2000). The lipofuscin fluorophore A2E mediates blue light-induced damage to retinal pigmented epithelial cells. *Investigative Ophthalmology and Visual Science*, 41, 1981–1989.
- Sparrow, J. R., Parish, C. A., Hashimoto, M., & Nakanishi, K. (1999). A2E, a lipofuscin fluorophore, in human retinal pigmented epithelial cells in culture. *Investigative Ophthalmology and Visual Science*, 40, 2988–2995.
- Sparrow, J. R., Vollmer-Snarr, H. R., Zhou, J., Jang, Y. P., Jockusch, S., Itagaki, Y., & Nakanishi, K. (2003). A2E-epoxides damage DNA in retinal pigment epithelial cells. Vitamin E and other antioxidants inhibit A2E-epoxide formation. *Journal of Biological Chemistry*, 278, 18207–18213.
- Sparrow, J. R., Zhou, J., Ben-Shabat, S., Vollmer, H., Itagaki, Y., & Nakanishi, K. (2002). Involvement of oxidative mechanisms in blue light induced damage to A2E-laden RPE. *Investigative Ophthalmology and Visual Science*, 43, 1222–1227.
- Sparrow, J. R., Zhou, J., & Cai, B. (2003). DNA is a target of the photodynamic effects elicited in A2E-laden RPE by blue light illumination. *Investigative Ophthalmology and Visual Science*, 44, 2245–2251.
- Sun, H., Molday, R. S., & Nathans, J. (1999). Retinal stimulates ATP hydrolysis by purified and reconstituted ABCR, the photoreceptor-specific ATP-binding cassette transporter responsible for Stargardt disease. *Journal of Biological Chemistry*, 274, 8269–8281.

- Sun, H., & Nathans, J. (1997). Stargardt's ABCR is localized to the disc membrane of retinal rod outer segments. *Nature Genetics*, *17*, 15–16.
- Sun, H., & Nathan, J. (2001). Mechanistic studies of ABCR, the ABC transporter in photoreceptor outer segments responsible for autosomal recessive Stargardt disease. *Journal of Bioenergetics and Biomembrane*, *33*, 523–530.
- Suter, M., Reme, C. E., Grimm, C., Wenzel, A., Jaattela, M., Esser, P., Kociok, N., Leist, M., & Richter, C. (2000). Age-related Macular Degeneration. The lipofuscin component in N-retinyl-N-retinylidene ethanolamine detaches proapoptotic proteins from mitochondria and induces apoptosis in mammalian retinal pigment epithelial cells. *Journal of Biological Chemistry*, *275*, 39625–39630.
- Taylor, H. R., West, S., Munoz, B., Rosenthal, F. S., Bressler, S. B., & Bressler, N. M. (1992). The long-term effects of visible light on the eye. *Archives of Ophthalmology*, *110*, 99–104 [see comments].
- Tournow, R. P., & Stilling, R. (1998). Variation in sensitivity, absorption and density of the central rod distribution with eccentricity. *Acta Anatomica*, *162*, 163–168.
- von Rückmann, A., Fitzke, F. W., & Bird, A. C. (1997). Fundus autofluorescence in age-related macular disease imaged with a laser scanning ophthalmoscope. *Investigative Ophthalmology and Visual Science*, *38*, 478–486.
- Weiter, J. J., Delori, F. C., Wing, G. L., & Fitch, K. A. (1986). Retinal pigment epithelial lipofuscin and melanin and choroidal melanin in human eyes. *Investigative Ophthalmology and Visual Science*, *27*, 145–151.
- Weng, J., Mata, N. L., Azarian, S. M., Tzekov, R. T., Birch, D. G., & Travis, G. H. (1999). Insights into the function of Rim protein in photoreceptors and etiology of Stargardt's disease from the phenotype in abcr knockout mice. *Cell*, *98*, 13–23.
- West, S. K., Rosenthal, F. S., Bressler, N. M., Bressler, S. B., Munoz, B., Fine, S. L., & Taylor, H. R. (1989). Exposure to sunlight and other risk factors for age-related macular degeneration. *Archives of Ophthalmology*, *107*, 875–879 [see comments].
- Wing, G. L., Blanchard, G. C., & Weiter, J. J. (1978). The topography and age relationship of lipofuscin concentration in the retinal pigment epithelium. *Investigative Ophthalmology and Visual Science*, *17*, 601–607.
- Yatsenko, A. N., Shroyer, N. F., Lewis, R. A., & Lupski, J. R. (2001). Late-onset Stargardt disease is associated with missense mutations that map outside known functional regions of ABCR (ABCA4). *Human Genetics*, *108*, 346–355.
- Young, R. W. (1987). Pathophysiology of age-related macular degeneration. *Survey of Ophthalmology*, *31*, 291–306.
- Young, R. W. (1988). Solar radiation and age-related macular degeneration. *Survey of Ophthalmology*, *32*, 252–269.