

Model of cochlear microphonic explores the tuning and magnitude of hair cell transduction current

Brian Frost^{1,*} and Elizabeth S. Olson^{2,3,*}

¹Electrical Engineering, ²Otolaryngology, Head and Neck Surgery, and ³Biomedical Engineering, Columbia University, New York, New York

ABSTRACT The mammalian cochlea relies on the active forcing of sensory outer hair cells (OHCs) to amplify traveling wave responses along the basilar membrane. These forces are the result of electromotility, wherein current through the OHCs leads to conformational changes in the cells that provide stresses on surrounding structures. OHC transducer current can be detected via the voltage in the scala tympani (the cochlear microphonic, CM), and the CM can be used as an indicator of healthy cochlear operation. The CM represents a summation of OHC currents (the inner hair cell contribution is known to be small) and to use CM to probe the properties of OHC transduction requires a model that simulates that summation. We developed a finite element model for that purpose. The pattern of current generators (the model input) was initially based on basilar membrane displacement, with the current size based on in vitro data. The model was able to reproduce the amplitude of experimental CM results reasonably well when the input tuning was enhanced slightly (peak increased by ~6 dB), which can be regarded as additional hair bundle tuning, and with a current/input value of 200–260 pA/nm, which is ~4 times greater than the largest in vitro measures.

SIGNIFICANCE Hair cells within the cochlea generate a current when their stereocilia pivot. A vector sum of these currents, known as the cochlear microphonic, can be measured in scala tympani. We developed a finite element model for the electrical properties of the cochlea, which we use to study the generation of the cochlear microphonic, and thereby stereocilia motion. We provide an interpretation of locality of the cochlear microphonic in terms of relative conductances within the cochlea. We find that relative to transverse basilar membrane motion, the stereocilia motion that results in hair cell current must be slightly more highly tuned. We also provide an estimate of channel sensitivity in vivo that is larger than what has been measured in vitro.

INTRODUCTION

Sensory hair cells produce an electrical current due to the pivoting motion of their stereocilia hair bundle (HB). This current leads to intracellular voltage changes that drive transmitter release in the case of inner hair cells and drive electromotility and cochlear amplification in the case of outer hair cells (OHCs) (1). The transducer current passes through the hair cell membranes into scala tympani (ST) and produces a time-varying voltage, referred to as the cochlear microphonic (CM). Both inner hair cells and OHCs produce a transducer current, but the current produced by OHCs is the dominant contributor to the CM (2). The relationship between ST voltage and OHC current is complicated, as it depends on the currents of many OHCs stimulated at different amplitudes and phases according to

the traveling wave response of the cochlea. The measured voltage will depend on the location where it is measured within the ST, as nearby OHCs contribute more to the locally measured voltage than those that are far away. Near the basilar membrane (BM), voltage responses resemble local BM traveling wave responses, creating what is referred to as the local cochlear microphonic (LCM). The LCM has been used as an indirect measure of local OHC current and to probe the operation of the cochlear amplifier (3–6).

To use LCM data most productively, one would like to relate them more concretely to HB motion. That project confronts and speaks to two unknown relationships. The first is the relationship between BM motion, which is known in the base for many species, and HB stimulation. HB pivoting has been approximated as directly proportional to BM motion (7). However, the HBs are stimulated by motions within the OC, and optical coherence tomography-based measurements of motions within the organ of Corti (OC) have found that intra-OC motion can be substantially

Submitted March 8, 2021, and accepted for publication August 4, 2021.

*Correspondence: b.frost@columbia.edu or eao2004@columbia.edu

Editor: Eric Sobie.

<https://doi.org/10.1016/j.bpj.2021.08.010>

© 2021 Biophysical Society.

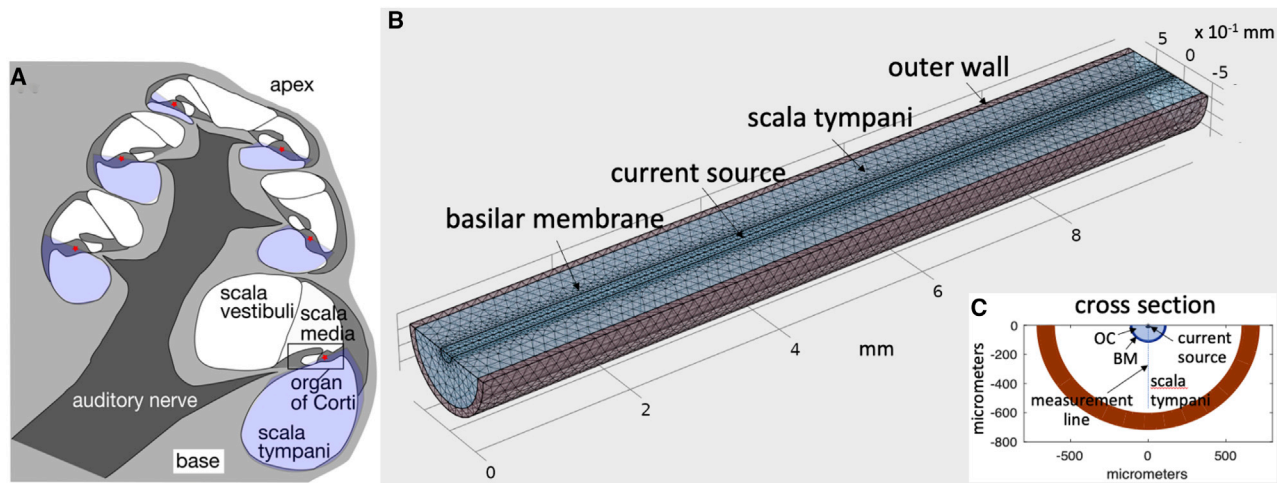


FIGURE 1 (A) Cross section of the gerbil cochlea, with the spiraling ST marked in blue. The red star represents the spiraling current source. (B) Geometry of the model as it appears in the COMSOL Multiphysics user interface, representing an uncoiled version of the blue region in (A). The outer wall is distinct from the larger fluid space, and the approximate position of the BM is marked by a half-cylindrical surface. The line-current source can be seen on the flat surface. (C) shows a cross section 2.5 mm from the base, and the vertical line from source to wall is where simulated voltages are recorded. OC, organ of Corti; BM, basilar membrane. To see this figure in color, go online.

larger than BM motion (8–12). Moreover, in mice HB motion has been inferred to be more sharply tuned around the peak frequency than BM motion via measurements of tectorial membrane (TM) and reticular lamina (RL) motions (13). The second unknown relationship is that between OHC current and ST voltage. Here, we present a semicylindrical finite element model (FEM) of the gerbil cochlea ST that incorporates the three spatial dimensions of the fluid space and the electrical properties of the outer wall (Fig. 1). With this relatively physically realistic model for current spread, we compare predicted and measured CM. We are primarily concerned with two questions, and the information revealed by their answers: 1) is the shape of the experimentally measured LCM voltage consistent with proportionality between BM displacement and OHC current? This question is motivated in part by an intuitive surprise at how sharply tuned the experimental LCM is (3,4,6,10), given that it is due to a summation of distributed currents; 2) is the magnitude of the experimentally measured LCM response consistent with the HB displacement-current relationships measured *in vitro*? This question is motivated by the uncertainty in this value because of the experimental challenges and limitations of *in vitro* measurements.

The relationship between the CM and the hair cell current sources has been studied using cable models of current spread in the cochlear scalae. The current source, based on BM displacement, runs along one side of the cable. The cable's electrical properties are characterized by longitudinal and radial resistances, with a single controlling parameter, the space constant. In practice, the CM prediction from a cable model is found as a sum of OHC contributions, with the weighting falling off exponentially with OHC longitudinal distance from the measurement location, and the exponential decay governed by the space constant (3,6,14–17). Cable

models have also been incorporated into relatively complex mechanical models of the cochlea (18,19). In addition to models of natural cochlear electromechanics, FEMs of the scalae's electrical properties have been developed to predict the electrical potentials that excite auditory neurons to better understand and improve the operation of cochlear implants (20–22). These are implemented using a precise geometric model of the human cochlea, including all three scalae and the spiraling structure of the cochlea, and the stimulus is presented in ST by a simulated electrode. Our model differs from the FEMs used to study cochlear implants in that we are interested in studying the effect of an unknown OHC current source on ST voltage rather than the voltages produced by known, electrode-based current sources present in the ST. Although the cochlear implant studies model the same electrical properties as we do, they are more complex than is needed to study the questions posed above. Our model contains few electrical and geometrical parameters, allowing a more complete exploration of parameter space. The simplicity of the model aids in the interpretation of results and reduces computation time.

To give a preview of findings, when proportionality between BM displacement and OHC current was assumed and the magnitude of the OHC current was based on *in vitro* data (23), the model fell short of predicting the measured LCM in several ways; the model's predicted LCM tuning was not as pronounced as experimental results, and the magnitude of the predicted LCM was smaller than the measured LCM. In addition, the predicted LCM phase did not go through as much accumulation as in the experimental results, and a phase lift in LCM in response to BM motion at a frequency slightly below and through the peak frequency that occurs in experimental results in gerbil was not predicted. (The peak frequency will be referred to as “CF,” for

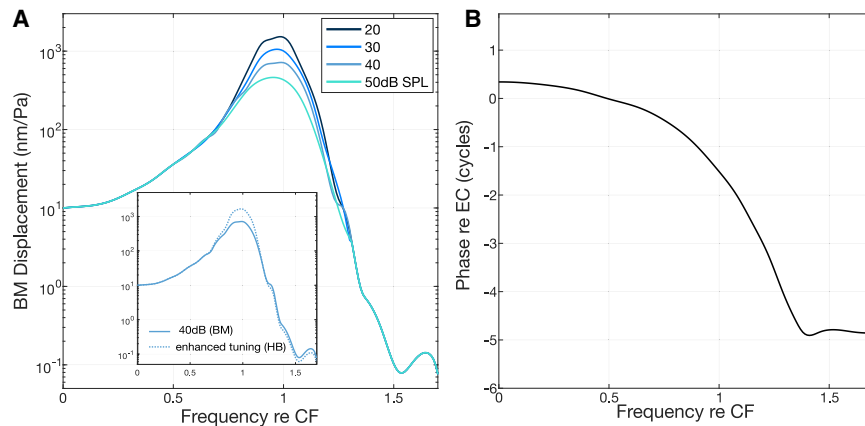


FIGURE 2 Current source is initially assumed to be proportional to BM displacement shown here. (A) Amplitude and (B) phase of BM displacement, based on gerbil data with CF 15.5 kHz (27), at sound pressure levels 20–50 dB SPL. The phase was nearly independent of SPL, and the small variations were not included. Phase is shown referenced to the EC pressure. The data are plotted versus frequency/CF. Inset in (A) shows enhanced tuning (of hair bundle (HB) over BM) that will be applied to the 40 dB SPL input in one section of the results. To see this figure in color, go online.

“characteristic frequency,” the frequency of the peak at low sound levels.) These discrepancies indicate that OHC current is more sharply tuned than BM displacement and suggest that it leads BM displacement at frequencies within the peak. These expectations are consistent with the enhanced tuning in radial HB motion in both experiments and predictions of cochlear models (13,24). The findings also lead to a prediction that OHC transducer current is larger than has been measured in *in vitro* experiments. It has been proposed that the experimental conditions in *in vitro* experiments would give rise to measured currents about four times lower than what would be produced *in vivo* (25,26), and our results support that proposal. Finally, we find that reducing the basal current leads to more realistic phase excursion in the predicted LCM, suggesting that the phase accumulation seen *in vivo* could be due to basal impairment in the cochlea from which LCM is measured.

The cochlea is a feedback system, in which mechanical motion produces hair cell current and thus voltage, which feeds back to boost the motion (1). The current sources will be influenced by the feedback, but the relationship between the voltage in ST and the current sources that we model is independent of the feedback, which is not incorporated into the model. Of more potential concern is that the cochlea is a nonlinear system, with the nonlinearity based in the saturating relationship between HB current and HB displacement. In our model, the relationship between the HB current and displacement is taken as linear. This is defensible in that we restrict the model to sound pressure levels (SPLs) up to 50 dB and emphasize results up to 40 dB, at which responses still show robust CF peaks, so current saturation is not pronounced (Figs. 2 and 3). Moreover, including nonlinear saturation in the predicted current would lead to a prediction of smaller current and therefore smaller voltage, so the finding that the predicted LCM is smaller than experimentally measured LCM would be strengthened by including nonlinear saturation. Similarly, including nonlinear saturation would lead to a prediction of less sharp tuning in the LCM, so the finding that the predicted LCM is

less sharply tuned than the experimental LCM would also be strengthened. In future work, the model could be expanded to include nonlinear saturation of HB current.

MATERIALS AND METHODS

Model

The cochlea is modeled as a half-cylinder 10 mm in length, which is approximately the length of the uncoiled gerbil cochlea. The OC, BM, ST, and outer wall are each modeled as half-cylindrical shells. The OC is 80 μm in radius, positioned at the center of the cochlear model (28). The BM is a 10- μm -wide half-cylindrical shell surrounding the OC. The ST is 520 μm wide (29), so that the entire electrically homogeneous “fluid space” (OC, BM, and ST) is effectively a single 610- μm -wide half-cylinder. These values come from measurements of the gerbil cochlea at a point ~ 2.5 mm in from the oval and round windows (29). The outer curved wall is modeled as being 100 μm wide. The geometry of the model in the COMSOL Multiphysics user interface is presented in Fig. 1. Results using a model with more accurate scalae dimensions are in the Supporting materials and methods; the results were not changed significantly.

OHC current is modeled as a line-current source $A(x)$, running along the center of the flat side of the half-cylinder (the center of the OC) from base to apex. We force a potential of 0 at the outer face of the outer curved wall. The flat boundaries of the system (the semicircular boundaries at the base and apex and the rectangular surface on top) are assumed to be electrically insulating, so that no current may flow through them. Mathematically, this is to say that if \mathbf{J} is the current density field, then $\mathbf{J} \cdot \mathbf{n} = 0$ at the insulating surface for any vector \mathbf{n} normal to the surface.

Insulating boundary conditions at the basal and apical surfaces of the cochlea are justified by the fact that no direct current will flow through the round and oval windows. The top surface represents the boundary between the ST and scala media, which are filled with perilymph and endolymph, respectively. These fluids are electrically and ionically distinct, isolated from one another by tight junctions in the RL (30,31). This justifies our choice of an insulating boundary condition at the top surface.

Within the interior, we solve the charge density continuity equation

$$\frac{\partial \rho}{\partial t} + \nabla \cdot \mathbf{J} = 0 \quad (1)$$

where ρ is charge density, as well as Ohm’s law

$$\mathbf{J} = \sigma \mathbf{E}, \quad (2)$$

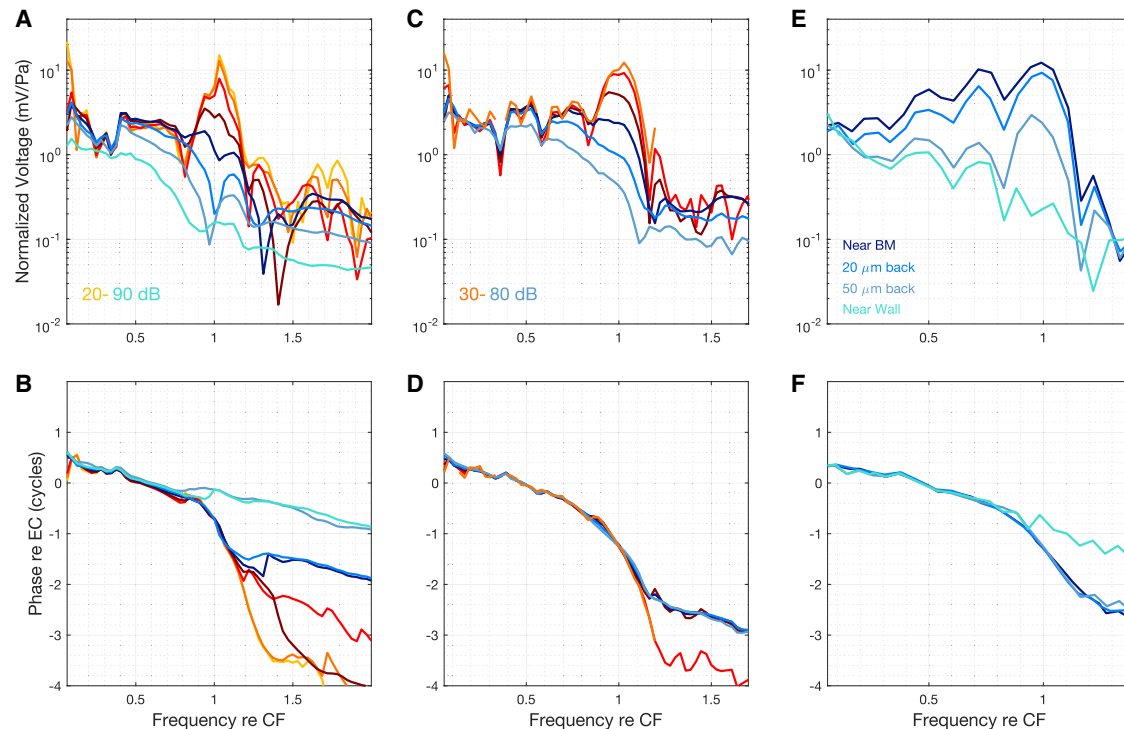


FIGURE 3 CM from experimental data sets. (A and B) Set 1, gerbil 712 (10), amplitude and phase of CM measured close to ($\sim 20 \mu\text{m}$ from) the BM at the 16 kHz CF location. SPL was 20–90 dB in 10 dB intervals. (C and D) Set 2, gerbil 693 (24), amplitude and phase of CM measured close to ($\sim 20 \mu\text{m}$ from) the BM at the 18 kHz CF location. SPL was 30–80 dB in 10 dB intervals. (E and F) Gerbil 693, amplitude and phase of CM at various distances from the BM in scala tympani at the 18 kHz CF location, 45 dB SPL. To see this figure in color, go online.

where σ is the conductivity of the material and \mathbf{E} is the electric field. We are interested in finding the voltage V , which is related to the electric field via

$$\mathbf{E} = -\nabla V. \quad (3)$$

With the radii and length preset, the only physical parameters for the model are the electrical conductivity of the different regions of the cochlea. We model the OC, BM, and ST as having the conductivity of saline, $\sigma = 14.5 \text{ mS/cm}$ (this parameter is fixed), and we let the conductivity of the outer wall be $\sigma_w = \sigma/K$ for some conductivity scaling factor K . As the OC, BM, and ST are modeled as electrically identical, the structure is reduced to a half-cylinder nested within a half-cylindrical shell (Fig. 1).

Equations 1, 2, and 3 were solved subject to the specified boundary conditions by using the finite element method based in the COMSOL Multiphysics software package. A tetrahedral mesh with elements no smaller than $40 \mu\text{m}$ and no larger than $55 \mu\text{m}$ on each side was used. This was sufficient to achieve convergence of the simulation for frequencies as high as 25 kHz. The use of this relatively coarse mesh is possible because the details of the OC and BM have not been included in the model geometry. A mesh twice as fine (in terms of minimal side length) was tested for a single input, and no characteristic differences were seen in the model output. The current source is defined with a linear resolution of $11.1 \mu\text{m}$.

We find voltage along a line segment running from the interior of the outer curved wall to the flat rectangular boundary containing the line source, at a distance 2.5 mm from the base (see *measurement line* in Fig. 1 C). The location 2.5 mm from the base corresponds to a best frequency of 19.5 kHz in gerbil and is at or near the location where experimental data were gathered. We observe the model output at 32 frequencies between 1 and 25 kHz.

All simulations were performed on a personal computer running the 64-bit Windows 10 Enterprise operating system, equipped with 32 GB of RAM and an Intel Xeon W-2133 CPU (3.6 GHz clock rate). On this system, a 32-frequency sweep as described above takes 34 min and 6 s for a single SPL.

Outer wall conductance and locality

In cable models, the locality of the CM measurement along the cable—the degree to which the CM represents current from local OHCs—is determined by a space constant λ , a parameter that is proportional to the ratio of radial to longitudinal resistances, with units of distance. An increase in λ corresponds to a less local measurement, i.e., it corresponds to more distant current sources having a larger impact on the measured voltage. In the FEM, the unitless parameter K modifies the locality of measurement by controlling the conductance of the outer wall relative to the fluid. Previous FEMs have similarly found the conductivity ratio to be an important controlling factor of current flow through the cochlea (22). An intuitive connection exists between K and the λ of cable models. In a cable model, the longitudinal resistance is entirely due to perilymph resistance, and the radial resistance is due to both perilymph and wall resistance. In the FEM, higher values of K correspond to higher radial resistance and will lead to more contribution to the measured CM from nonlocal sources, whereas lower K -values, corresponding to lower radial resistance, will yield CM measurements that more closely resemble the local current source. However, even as K approaches 0, the radial resistance of ST is always present, so the model cannot be made arbitrarily local. This is distinct from cable models, in which the value of λ can be changed so that any degree of locality is seen at the output. By sweeping the parameter K for a single stimulus, we found that a value of $K = 50$ was reasonable for predicting the locality of experimental CM measurements. We use this value for most simulations and present the results of the parameter sweep in the Results.

Current source

The input to the model is the value of the line-current source, which is a function of the position along the length of the cochlea, x , with units of amperes per meter (A/m). For a single-tone input, $A(x, f, S)$ denotes the

frequency-domain representation of the linear current density at the source at position x in response to a tone at frequency f and sound pressure level S .

We assume initially that the current at position x is directly proportional to the transverse displacement of the BM at position x . Denoting the frequency-domain transverse BM displacement as $z(x, f, S)$, there exists a constant C such that $A(x, f, S) = Cz(x, f, S)$. As z has units m, C has units A/m² and corresponds to current per unit length along the cochlea per unit displacement of the BM. OHCs come in rows of three and are spaced by $\sim 10 \mu\text{m}$ along the length of the cochlea, so along 1 mm of the cochlea there are ~ 100 rows of OHCs (32). We let each OHC produce 33 pA/nm, a value that is based on the slope of the Boltzmann input/output curve from in vitro OHC data, in which the input is the pivoting displacement of the stereocilia bundle (23). With 100 pA/nm per row and 100 rows/mm, our starting estimate for C is $C = 10 \text{ kA/m}^2$.

Most available BM motion data are measured over a range of frequencies and sound pressure levels at a single location—that is, we have access to $z(x_0, f, S)$ for some fixed x_0 . To approximate $z(x, f, S)$ using these data, we invoke the principle of scaling symmetry (1,33–35). Scaling symmetry is based on a premise that the displacement of the BM at some location and frequency depends only on the sound pressure level and the ratio of the driving frequency to that location's best frequency. With that premise, for a given location x_0 , frequency f_0 , and sound pressure level S_0 , we may find $z(x, f_0, S_0)$ given $z(x_0, f, S_0)$ so long as we have the tonotopic map of the species—that is, the function $CF(x)$ that maps each location x to the best frequency at that location. Specifically, we may write

$$z(x, f_0, S_0) = z\left(x_0, \frac{f_0}{CF(x)} CF(x_0), S_0\right). \quad (4)$$

For gerbil, the tonotopic map was measured by Müller to be

$$CF(x) = 0.398 \times (10^{0.2(11.1-x)} - 0.631), \quad (5)$$

where x has units of millimeters and $CF(x)$ has units of kilohertz (36).

The phase of BM displacement and of CM are often referenced to the ear canal (EC) pressure. To apply scaling symmetry, we must have the BM phase referenced to stapes motion; this ensures that all phase accumulation in the input data is intracochlear. Phase referenced to EC also contains the phase accumulated within the middle ear, which should not be manipulated via scaling symmetry. Assuming middle ear delay T in seconds, the phase will accumulate $-2\pi fT$ cycles in the middle ear at the stimulus frequency f . Given a phase ϕ_E referenced to the EC with units of cycles, the phase referenced to stapes motion ϕ_s in cycles is given by

$$\phi_s = \phi_E + 2\pi fT. \quad (6)$$

That is, we subtract the phase accumulated in EC. The middle ear transmission delay has been measured in gerbil as $T \sim 25 \mu\text{s}$ (37). The input to our COMSOL model is referenced to stapes motion, and thus, the phase of the predicted voltage is referenced to stapes motion as well. To compare the predicted CM phase to CM data referenced to the EC, we simply add $-2\pi fT$ to the predicted phase (we add back in the phase accumulated in the middle ear).

We use BM displacement data based on the measurements of Ren et al. (27) with CF 15.5 kHz. We choose these data because they were taken over a wide frequency range, facilitating the use of scaling symmetry, and because they were taken with a laser interferometer and thus were more quantitatively accurate than those obtained via pressure difference measurements made with a pressure and voltage sensor (3). The data, shown in Fig. 2, have been smoothed, and the phase, which was only mildly SPL-dependent, is taken to be independent of SPL. Using scaling symmetry, we generate line-current source values proportional to these BM displacement data at 32 frequencies between 1 and 25 kHz. The scaling symmetry approximation is most valid in the vicinity of the location at which the generating data were

taken. Scaling symmetry applies where the tonotopic map is exponential, which in gerbil is the case for locations above the 2 kHz place (36).

RESULTS

Features of the data

We open the results section by presenting the experimental data that were used to guide and evaluate the modeling study. Fig. 3 shows two gerbil CM data sets; set 1 from (10) and set 2 from (24) show LCM measurements from two different gerbils. Fig. 3, *E* and *F* show CM at several distances from the BM in the preparation of set 2. Differences between the set 1 and 2 responses are likely due to variations in the conditions of the preparations and also the variations in the distance to the BM, which is not known precisely. The LCM is similar to BM displacement in peaking at the CF, showing compressive nonlinearity, particularly in the peak region, and showing traveling-wave phase excursion through several cycles. LCM responses differ from BM responses at SPLs of 60 dB and above, at which the LCM peak is washed out, likely in part because of the increasing influence of nonlocal responses. The amplitude in the sub-CF region is quite flat at low SPL, whereas it is monotonically decreasing at higher SPL. Data above ~ 60 dB SPL are likely affected significantly by mechanoelectrical transduction (MET) channel saturation and will not be well reproduced by our linear model; we restrict the modeling study to SPLs up to 50 dB.

One feature of the data is the presence of sub- and supra-CF notches in the magnitude response, appearing in all three panels. Notches can be produced by phase cancellation when the summation of local and more distant sources add destructively (3,15). In addition, mechanical resonance or standing wave patterns could produce notches at the HB and thus in the current source itself (24,38). This possibility is not a focus of our study but is briefly explored in Figs. S3 and S4.

At low SPL (up to ~ 40 dB), the phase of the LCM response shows traveling wave accumulation through more than three cycles and then plateaus at a frequency slightly above the CF. At higher SPLs, the plateau occurs at a lower frequency, with full cycle separations between the plateaus at different SPLs. When LCM was measured simultaneously with BM motion or compared in CF-matched data sets in gerbil, the LCM was observed to lead BM displacement by ~ 0.25 cycle, starting at a frequency ~ 0.7 – 0.8 times the CF (3,10,24). In an analysis of HB stimulation in mice, a phase lead relative to BM motion was observed (13). This could be produced by additional filtering—something like a TM resonance (24). Phase variations in the current source were not explored in this model except in Fig. S4.

The CM voltage is sensitive to the position within the ST at which the measurement is taken. Fig. 3, *E* and *F* show

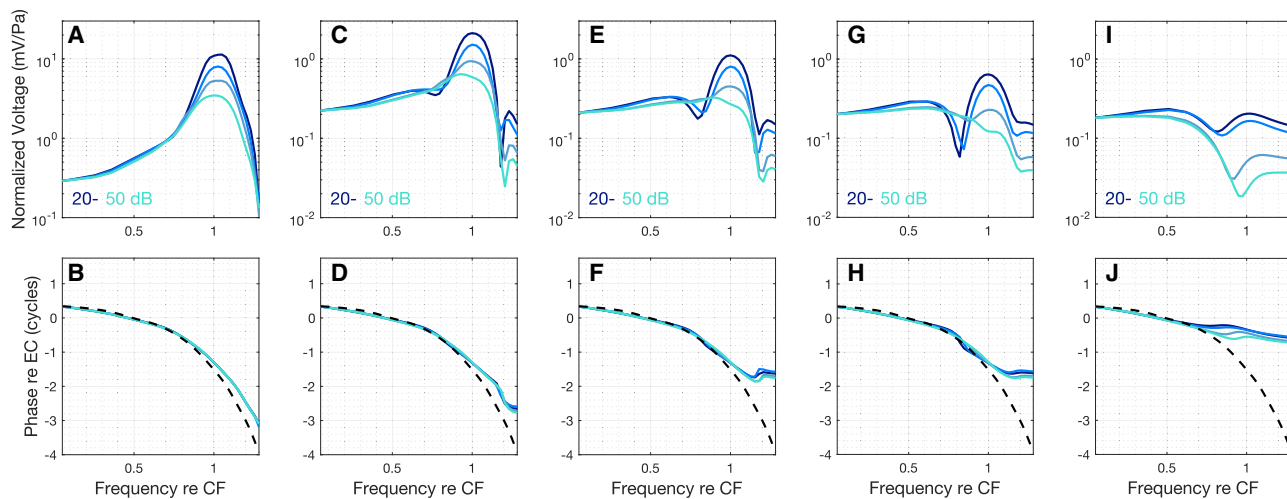


FIGURE 4 CM prediction under the assumption that current is proportional to BM displacement. $K = 50$, and channel sensitivity = 33 pA/nm (starting value). Predictions are shown at five locations along the line segment 2.5 mm from the base of the cochlea (see Fig. 1 C). Magnitude and phase: (A and B) at the position of the line-current source, (C and D) 55 μm from the source, (E and F) 110 μm from the source, (G and H) 160 μm from the source, and (I and J) 410 μm from the source. The dashed lines in the lower panels are the phase of the input (BM displacement) used to generate the current stimulus. To see this figure in color, go online.

voltage measured at various distances from the BM at 45 dB SPL. The peak diminished as voltage was measured further from the BM. A slight positive slope in the sub-CF region was observed close to the BM, whereas a slight negative slope was seen far from the BM. Traveling-wave phase accumulation through >2 cycles was observed at locations up to $\sim 50 \mu\text{m}$ from the BM, but not when measured $\sim 300 \mu\text{m}$ from the BM, close to the outer wall, where the phase accumulation was slightly over one cycle and can be attributed largely to the $\sim 25 \mu\text{s}$ middle ear delay.

A list of qualitative features

This leaves us with a list of experimentally measured properties that we will use to explore the FEM-predicted CM voltage: 1) the presence of a prominent CF peak for SPLs up to 50 dB for CM measured near the BM (as LCM), 2) the presence of sub- and supra-CF notches, 3) a loss of peak definition as measurements are taken further from the BM, 4) a relatively flat amplitude response in the sub-CF region, 5) traveling-wave phase accumulation through several cycles for measurements within 50 μm of the BM that is lost in measurements further from the BM, and 6) a phase lead of the LCM with respect to BM motion at frequencies within the CF peak.

A comparison of property 1 in modeling and experimental results will point to whether additional filtering is called for between BM displacement and HB stimulation. Experimental properties 2, 3, and 5 are a consequence of current spread into the saline-filled cochlear spaces and are expected to be observed in the model results as long as we have modeled the physical properties reasonably. Property 4 is related to the locality of the voltage and will help us to determine the value of the parameter K . A totally local measurement would

see a positive slope in the sub-CF band, as this is the shape of the line-current source. A less local measurement would have contributions from many current components and may appear flatter. We choose K so that the experimentally observed flatness is produced by the model. Experimental property 6, the presence of a phase shift and lead of LCM with respect to BM motion, is not expected to be observed in the FEM model; the predicted LCM phase is expected to be approximately in phase with the BM displacement when the line-current source is taken to be proportional to BM displacement. (If a phase shift were predicted, it would cast doubt on models that require TM filtering to produce the shift (24).)

Model predictions

Input based on BM displacement

As described above, we first use a line-current source that is proportional to the BM displacement data in Fig. 2 after applying scaling symmetry. Fig. 4 shows the predicted voltage along the radial line at the 19.5 kHz location (see *measurement line* in inset in Fig. 1) for 20, 30, 40, and 50 dB SPL. The predicted voltage at four points along this line are shown: at the location of the line source and at distances 55, 110, 160, and 410 μm from the line source. The phase of the BM displacement used to generate the current stimulus is included for reference. Fig. 4, A and B show the predicted voltage at the position of the line source. A strong peak is present in all of the panel A curves. The shapes of the curves in A and B are nearly, but not exactly, identical to the BM displacement (model input) in Fig. 2, and the phase courses through more than three cycles and leads the input phase gradually at supra-CF frequencies. The reason that there is any difference between voltage at the position of

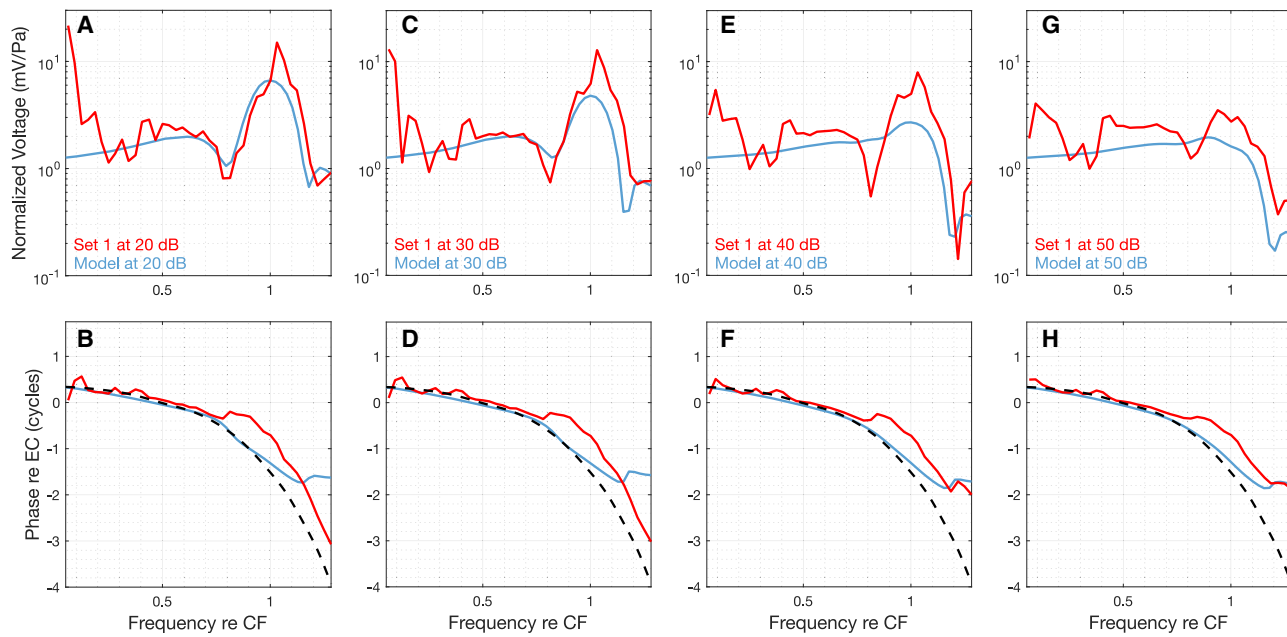


FIGURE 5 Model LCM predictions $110\ \mu\text{m}$ from the line-current source ($\sim 20\ \mu\text{m}$ from the BM) compared with experimental set 1. Results (magnitude and phase) are shown at 20 (A and B), 30 (C and D), 40 (E and F), and 50 dB SPL (G and H). CM predictions are based on the assumption that current is proportional to BM motion. $K = 50$, and channel sensitivity is adjusted from starting value of 33–200 pA/nm to align with the experimental result. The phase of the current stimulus is shown as a dashed line in the lower panels. To see this figure in color, go online.

the line source and the input is because the voltage at the line source will be influenced by the current of other locations. Fig. 4, C and D show responses $55\ \mu\text{m}$ from the line source, a distance that is not experimentally accessible but is useful for illustration. The magnitude of the peak is reduced, a supra-CF notch has developed, and the phase accumulates three cycles and then plateaus. The predicted amplitude of the CM $110\ \mu\text{m}$ from the line-current source (Fig. 4 E), which approximately corresponds to the LCM measurement location $\sim 20\ \mu\text{m}$ from the BM, contains substantial CF peaks at 20 and 30 dB SPL, with notches skirting the peaks. At 40 and 50 dB SPL, the peak is substantially washed out. This trend continues in Fig. 4 G, $160\ \mu\text{m}$ from the line-current source. The predicted LCM phase accumulation at the BM is two cycles (Fig. 4 F), and the phase contains ripples where the amplitude notches occur.

The predicted LCM voltages at a point $110\ \mu\text{m}$ from the line-current source are compared to the experimental data of set 1 in Fig. 5 and of set 2 in Fig. 6. In these figures, the model's current source strength, which was reasoned from in vitro data to take a value of 33 pA/nm, has been multiplied by factors of 6 (to 200 pA/nm, set 1) and 8 (to 260 pA/nm, set 2) to match the experimental LCM amplitudes in the sub-CF band.

Input with additional tuning

The predicted LCM voltages at a point $110\ \mu\text{m}$ from the current source, using both the BM-based and HB-based current sources (Fig. 2, inset), are compared to the data of sets 1 and

2 in Fig. 7. With the more tuned current source, the LCM peak is more prominent, whereas the phase is affected very little. Just as in Fig. 4, the current source strength was 200 pA/nm (set 1) and 260 pA/nm (set 2). (This value was chosen to match the sub-CF amplitude, which was not substantially affected by the enhanced tuning.)

Effect of varying outer wall conductivity

The outer wall conductivity proportionality constant K allows for a degree of control over the locality of the voltage measurement, with low and high K corresponding to measurements in which current from local OHCs would be more or less dominant over remote OHCs. In the results shown previously, $K = 50$. To illustrate the sensitivity of the model to changes in K , we show the predicted CM at points 110 and $210\ \mu\text{m}$ from the line-current source for six different K -values in Fig. 8.

DISCUSSION

Basic comparison of modeling and experimental results

In the Results, we provided a list of qualitative properties of the experimental data to use to explore the FEM predictions. Property 1 was the presence of a CF peak in LCM for stimuli below 60 dB SPL. In Fig. 4, E and F (corresponding to $110\ \mu\text{m}$ from the line source), the FEM predicts a significant peak at 20 and 30 dB SPL, but a peak is barely present at 40 dB SPL, and the 50 dB SPL peak is washed out. Direct

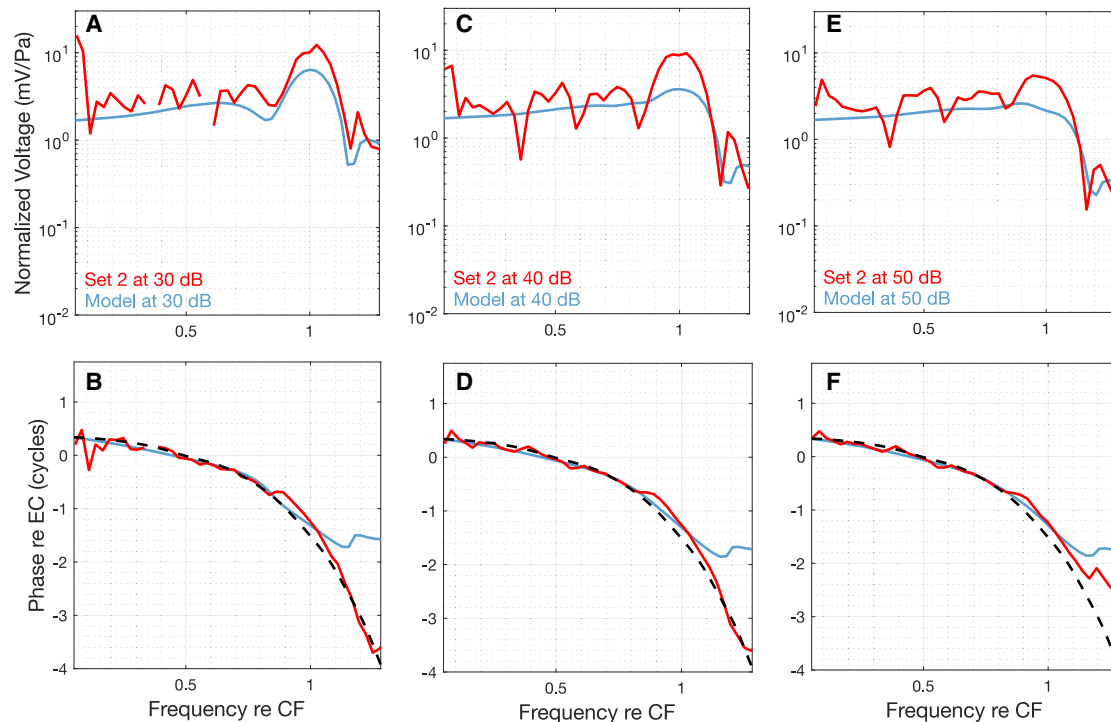


FIGURE 6 Model LCM predictions 110 μm from the line-current source ($\sim 20 \mu\text{m}$ from the BM) compared with experimental set 2. Results (magnitude and phase) are shown at 30 (A and B), 40 (C and D), and 50 dB SPL (E and F). CM predictions are based on the assumption that current is proportional to BM motion. $K = 50$, and channel sensitivity is adjusted from starting value of 33–260 pA/nm to align with the experimental result. The phase of the current stimulus is shown as a dashed line in the lower panels. To see this figure in color, go online.

comparison to the experimental data in sets 1 and 2 (Figs. 5 and 6, respectively) shows that the experimental peak at the CF is underpredicted. In particular, the peak is washed out in the model results at 40 dB SPL, at which it is still strong in the experimental LCM. The inability of our model to predict the degree of tuning in the LCM using the BM-proportional line-current source supports the idea that HB motion is more sharply tuned than BM motion, as in Fig. 7, which we discuss further below.

Property 2 was the presence of sub- and supra-CF notches. In both predicted and experimentally measured CM voltage, the sub-CF notches near the BM only appear when there is a strong peak. The presence of the peak is poorly predicted by the model at 40 and 50 dB, and the sub-CF notches are not predicted at these SPLs either. This argues that the sub-CF notch is the result of cancellation involving currents from the sub-CF peak. The supra-CF notch is predicted relatively accurately at all SPLs.

Properties 3 and 5—loss of peak definition and phase accumulation as we move further from the BM—are apparent in our predicted CM voltages in Fig. 4. Finally, property 4—the flatness of the sub-CF band—is met accurately at all SPLs in both sets. This is controlled in part by the value of K , which has been chosen to best match data in the sub-CF region.

Property 6, the presence of a phase shift and lead of LCM with respect to BM motion, was not predicted by the FEM

model. The predicted phase does not undergo the lift and pronounced lead apparent in the experimental data, especially clear in Fig. 6. This experimental feature likely requires a shift in the phase of the current source (Fig. S4).

The predicted LCM phase begins to plateau at a lower frequency than the measured LCM phase. It is tempting to say this plateau is due to the “fast mode” response. In experimental intracochlear measurements, at frequencies somewhat above the CF peak, the phase flattens out in pressure, displacement, and LCM (39). In pressure, the plateau phase is readily attributed to the pressure’s fast mode (40), and the fast mode pressure can produce a fast mode of BM displacement (visible as the plateau in amplitude and phase in Fig. 2). This would lead to a fast mode LCM with phase plateau. However, in the results of Fig. 4, the predicted LCM phase plateaued at frequencies at which the displacement input was not in a plateau but was still accumulating. It is likely that the LCM plateau in the FEM arises from nonlocal current from the CF peak. In that case, the flat LCM phase observed in the model is akin to the nearly flat phase of a “wave-fixed” distortion product otoacoustic emission (DPOAE). A wave-fixed DPOAE arises from the CF peak place, at which the phase is nearly invariant, and then travels or projects to the measurement location (41). With this, the basis for the LCM phase plateau is understood, but the deviation between measurements and model predictions remains unexplained. The difference could be due to our

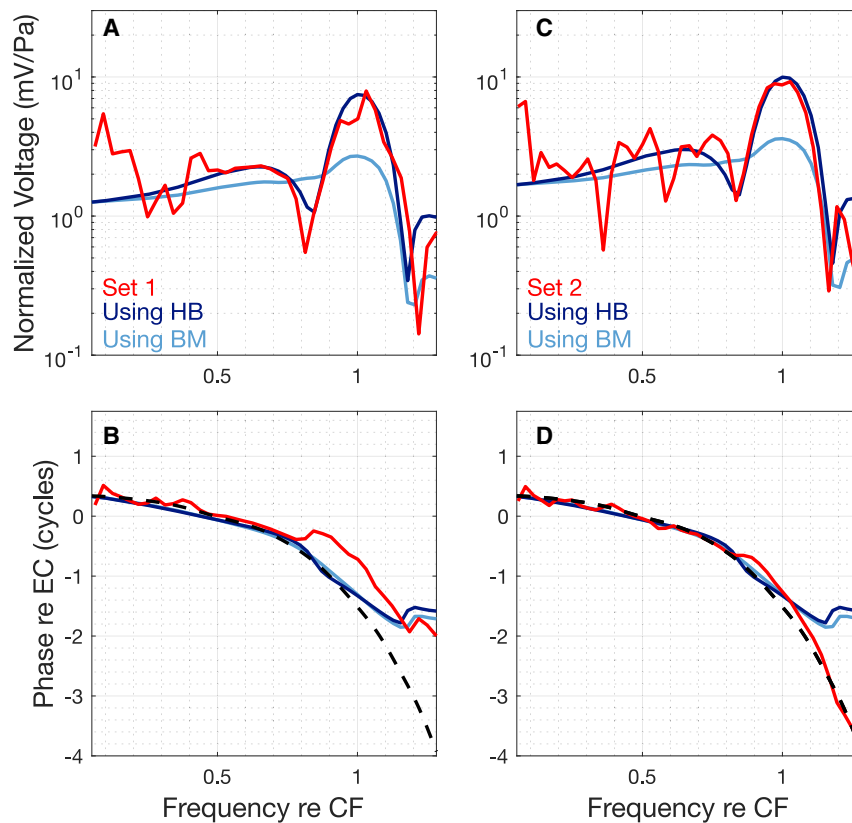


FIGURE 7 Model LCM predictions 110 μm from the line-current source compared to experimental data. Current source is based on the enhanced tuning of HB motion. Comparisons are made at 40 dB SPL. (A and B) Set 1 comparison. $K = 50$, and channel sensitivity is adjusted from starting value to 200 pA/nm (same as Fig. 5). (C and D) Set 2 comparison. $K = 50$, and channel sensitivity is adjusted to 260 pA/nm (same as Fig. 6). The phase of the current stimulus is shown as a dashed line in each phase plot. To see this figure in color, go online.

model being unrealistically nonlocal, meaning that the parameter K has been set too high. Another reasonable explanation is that the measurements are taken from gerbils in which the basal region was compromised because of experimental exposure. In that case, in the experiments, the basal CF peaks would be attenuated, and the local responses with traveling-wave phase accumulation would remain dominant through higher frequencies. The known fragility of the basal region makes this explanation credible (42). We return to explore these two possibilities in later sections but first return to the question of the insufficient tuning in the predicted LCM peak.

Additional tuning from HB displacement

The use of a line-current source based on BM displacement was insufficient to reproduce the tuning seen in the experimentally measured LCM. Although HB motion has not been directly measured in vivo, the difference between measured radial TM and RL motion in mouse has been used to infer HB motion (13). These data imply that peak radial HB motion is a factor of ~ 5 greater than peak BM motion, with only mild SPL dependence. A cochlear model that explored the micromechanics that would produce amplifying OHC forces also predicted sharper HB tuning compared to BM (24). Guided by our findings and encouraged by these previous modeling and measurement results, we expect

the line-current source to be more highly tuned than BM displacement. We generated a second line-current source with heightened tuning compared to BM motion, with a modest gain factor of ~ 2 at the peak. Fig. 7 compares the model to experimental results and shows that the use of the HB displacement to derive the current source led to a more accurate prediction of CM tuning than what was predicted using the BM-proportional current source. Whereas the predictions using the BM-proportional stimulus underestimated peaks at 20–30 dB SPL and showed no peak at 40 dB, the more highly tuned stimulus provides accurate predictions of both the presence and shape of the 40 dB SPL peak. In addition, the use of the more tuned current source better predicts the presence and magnitude of the sub-CF notch, satisfying properties 1 and 2. The distance-dependent properties 3 and 5, as well as the sub-CF flatness property 4, were met similarly with and without the application of additional tuning. Regarding the phase shift of property 6, the predicted phase is barely affected by the additional tuning. This is not surprising, as we have not altered the phase of the current source.

Quantitative difference in sensitivity

Under the original assumption that the OHC line-current source is proportional to BM displacement and that the OHC sensitivity is 33 pA/nm, the model-predicted voltage

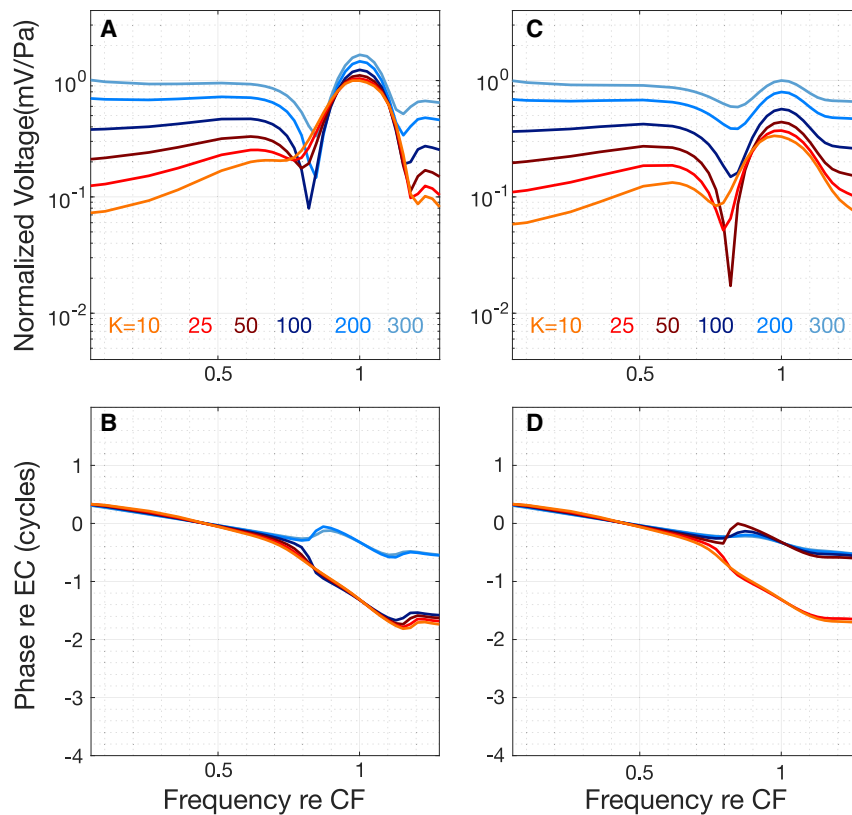


FIGURE 8 Effect of variations in lateral wall conductivity, $\sigma_w = \sigma/K$, where σ is the conductivity of the ST saline solution. Predicted CM at 20 dB SPL with $K = 10, 25, 50, 100, 150$, and 300 is shown. (A and B) $110 \mu\text{m}$ from the line-current source; (C and D) $210 \mu\text{m}$ from the line-current source. Channel sensitivity is set to 33 pA/nm . To see this figure in color, go online.

magnitudes were a factor of six or eight times smaller in the sub-CF region than measured LCM voltages. (The six to eight range is due to differences in magnitudes in the experimental data sets.) At the peak, this factor was even larger. The use of enhanced tuning as shown in the inset of Fig. 2 predicted the tuning of CM correctly and increased the peak value but had little effect on the magnitude of the sub-CF band. Thus, including the HB tuning did not change the finding that the OHC transducer channel sensitivity should be six to eight times larger than our assumed sensitivity (33 pA/nm), or $\sim 200\text{--}260 \text{ pA/nm}$. This could mean either that 1) OHC current/HB displacement sensitivity actually is six to eight times larger than our starting value of 33 pA/nm or 2) the HB displacement is six to eight times larger than BM displacement in the sub-CF band (and still more tuned than BM motion in the peak). We consider each of these in turn.

We estimated the OHC current-HB displacement relationship based on in vitro experimental data taken in a gerbil hemicochlea (23). Those experiments found that basal OHCs produced current with maximal gain of 50 pA/nm . We are measuring at the base, and we picked a modest starting sensitivity value of 33 pA/nm , considering that all OHCs are likely not operating at maximal gain. However, these in vitro data may underestimate sensitivity as a result of temperature, ion concentration, and holding potential differences between in vitro and in vivo conditions, as explored by

Kennedy et al. (25). This exploration was in mouse, but the relative value shifts under changes in experimental conditions are still of interest. For example, the holding potential in the hemicochlea experiments from which we derive our sensitivity of 33 pA/nm was -70 mV (23). Kennedy et al. show decreasing the holding potential from -84 to -134 mV can increase the gain by about a factor of 2 in in vitro mouse OHCs (25). This more negative holding potential better represents in vivo conditions, in which both the endocochlear potential and the intracellular potential are present. Kennedy et al. also found that changes in calcium concentration can increase OHC sensitivity by up to a factor of 2. He et al. (23) found that decreasing holding potential to -140 mV in the hemicochlea experiments nearly doubled the current response for a single given input stimulus. They also found that a decrease in calcium concentration can increase current by a factor of 3 for a given motion stimulus. Thus, in vitro versus in vivo differences in cell voltage and calcium concentration could be a source of the discrepancy between our model predictions and measured LCM. This argues that the $\sim 200 \text{ pA/nm}$ value for OHC sensitivity is accurate.

Alternatively, considering possibility 2, intra-OC motions up to a factor of 10 larger than BM motion have been measured near the CF in mouse and gerbil. In the data of Strimbu et al. (11) and Cooper et al. (9), displacement near the OHCs can exceed BM displacement by up to a

factor of 10 at all frequencies. However, this OHC region motion is not more sharply tuned than BM motion, and therefore, the current source is not likely to be based on it. Further evidence against possibility 2 comes from motion measurements in mice, indicating that the HB radial motion was smaller than the BM motion at frequencies lower than the CF (13). It is thereby most likely that the quantitative discrepancy is a result of underestimation of the in vivo OHC sensitivity and reinforces the sensitivity value of ~ 200 pA/nm.

Locality of the measurement and model predictions

Near the BM, at lower sound pressure levels, the phase in data traverse multiple cycles before leveling off, whereas model data travel through only about two cycles before leveling off at all SPL. This difference means that in the experiment, local current is more dominant over remote current than it is in the FEM. This inaccuracy in the model might be because we have made the outer wall resistance too large (K too large), which has the effect of emphasizing nonlocal current sources. Or it might be because in the real cochlea, the basal cochlea is not as robust as the location of measurement, and as frequency is increased, the peak size is reduced and thus offers less interference than the model predicts. We explore these possibilities in turn.

Discussion of effect of varying outer wall conductivity

Fig. 8 shows the effect of varying K using the initial model, with current source proportional to the BM displacement of Fig. 3. Responses are shown 110 μm from the line source (approximately at the BM) (Fig. 8, A and B) and 210 μm from the line source (Fig. 8, C and D). The way the predictions vary with K confirms that K functions as a locality-controlling parameter, with lower values of K (more conductive outer wall) corresponding to LCM measurements that more closely resemble the local current stimulus. The lower K results have an upward slope in the sub-CF band near the BM, whereas the response in this band is flat for higher K . A slight upward slope is seen in the sub-CF region of the experimental data of sets 1 and 2, best matching the slope of the $K = 50$ response and leading to the use of $K = 50$ for our simulations. The peak is less pronounced for high K , at which the contribution from more distant current sources is larger. The peak shape was not changed substantially by reducing K below 50. Thus, the finding that current proportional to BM motion is not sufficiently sharply tuned to predict the tuning of measured CM is robust to changes in K . Because the peak amplitude did not change significantly as K was varied, our findings relating to transducer sensitivity are robust to choice of K as well. A K -value of 50 corresponds to a wall conductivity value of $\sigma/K = 14.5/50$ mS/cm = 0.29 mS/cm, corresponding to a resistivity of ~ 3500 $\Omega\cdot\text{cm}$. This is greater than the resistivity of muscle but less

than that of bone and similar to the resistivity of fat (43). This seems reasonable, considering the tight junctions present in the tissue of the cochlear wall for maintaining the different fluid and electrical compartments of the cochlea. The wall resistivity we use is also in reasonable agreement with a previous estimate of ~ 1000 $\Omega\cdot\text{cm}$ (44).

Although the higher K -values and resulting reduced locality predicted a lack of phase accumulation, the lower K -values did not produce the several cycles of phase excursion observed in the experimental data of Fig. 3. Even making $K = 1$ did not produce the experimentally measured phase accumulation. It is useful to contrast this limitation of this parameter effect with the circuit-based cable model. In a cable model, the response is made increasingly local by reducing the space constant, λ , and can be made completely local by setting $\lambda = 0$. In the more realistic FEM, the spread of current cannot be reduced without limit. Therefore, other properties must be considered to explain the experimentally measured degree of locality in evidence in the several cycles of phase accumulation. We explored the second proposed explanation: that the cochlear responses were less robust in the region basal to the measurement location, and thus, those locations produced a reduced level of (interfering) current. We do this by modeling the CM voltage in a preparation in which the current in the region basal to the measurement location is simply nulled (extreme case) and in which it is reduced by half (more realistic case). This modification is reasonable, as the base of the gerbil cochlea is known to be quite fragile (42). We also show the model results in a preparation in which the current in the region apical to the measurement location is nulled. This exploration also proved useful in understanding the sources of the sub- and supra-CF notches.

Effects of nulling regions of the current source

We use the nulling exercise for two purposes: to explore whether nulling the basal region will produce the experimentally observed phase accumulation in LCM and to explore the basis of the notches in the model's predictions. We hypothesize that the notches seen in the FEM's magnitude response are due to phase cancellation between current components local to the measurement location and peak (high-amplitude) nonlocal current sources. To test this hypothesis, we consider two manipulations: one in which current apical to the 18 kHz location is set to 0 and one in which the current basal to the 21 kHz location is set to 0. These frequencies are chosen to be symmetric about and near to the 19.5 kHz CF of the measurement location. Using the initial model, with current source proportional to the BM displacement at 20 dB SPL, we observe the model predictions and compare them to that of the intact simulations. (To relate this to the HB-based tuning of Fig. 7, note that the BM-based current source at 20 dB SPL is similar to the HB-based source at 40 dB SPL.) The predictions are shown in Fig. 9.

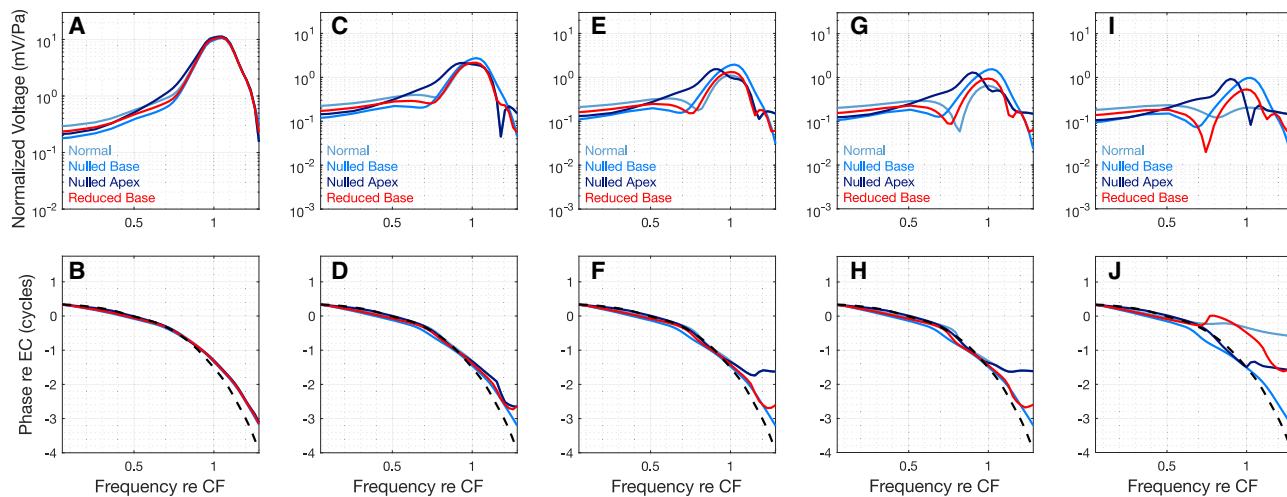


FIGURE 9 Effect of nulling or reducing the current source basal or apical of the measurement location (19.5 kHz CF place). Panel sets show magnitude and phase at various distances from the current source. The original current source, based on BM displacement tuning, and the original channel sensitivity, 33 pA/nm, are used. In the nulled-base case, the current source from the base to the 21 kHz place is set to 0. In the reduced-base case, the current source from the base to the 21 kHz place is reduced by half. In the nulled-apex case, current from the apex to the 18 kHz place is set to 0. SPL = 20 dB SPL, $K = 50$. (A and B) CM predictions at the position of the line-current source, (C and D) 55 μm from the line-current source, (E and F) 110 μm from the line-current source, (G and H) 160 μm from the line-current source, and (I and J) 410 μm from the line-current source. The phase of the current stimulus is shown as a dashed line in the lower panels. To see this figure in color, go online.

When current basal to the measurement location was nulled, the supra-CF notch disappeared at all locations, and the phase mimicked the BM phase more closely, traveling through many cycles monotonically. This is consistent with our hypothesis that both the premature phase leveling and supra-CF notch are due to the interference of current from basal OHCs. In addition, the sub-CF notch (Fig. 9 G) became less pronounced. When the current apical to the measurement location was nulled, at locations 55 and 110 μm from the current source, the supra-CF notch appeared at the same frequency and size as in the intact response, along with the premature leveling of the phase. In this case, the sub-CF notch disappeared. Thus, in the FEM, the sub-CF notch requires both basal and apical current to fully form.

Considering the less extreme case in which basal current contributions are halved, both the sub-CF and supra-CF notch remain. As in the case in which the basal current is entirely nulled, we see more phase accumulation than in the original study. However, as opposed to the nearly distance-independent phase accumulation apparent in the nulled-base case, a distance-dependent plateau develops in the reduced-base case. This resembles what is seen in experimental CM measurements better than the predictions from both the nulled-base case and the original (non-nulled) case.

To more concretely explore the notches in our model output, we consider the phase of the current source. Fig. 10 shows the amplitude and phase of the BM motion data used to generate our current source, with the values at frequencies at which notches occur highlighted with orange dots. The phases at the two notch frequencies are separated by almost exactly two complete cycles. The x axis is

labeled as frequency but could be interpreted as location, basal (left) to apical (right). Next, we note the size of the response and the phase behavior in which the response is destructively interfering with a notch position (differing by an odd number of half cycles). There are five such locations within the peak, marked with numbered blue dots. Destructively interfering component 1 is at a point at which the phase is changing slowly relative to all other interfering components. Therefore, there are many current sources near this frequency that have a destructively interfering phase relative to the two notch frequencies, and it is a relatively powerful interfering component.

Consider the supra-CF notch. When we null current basal to the location of measurement, we null the three largest destructively interfering current components (labeled 1, 2, and 3). The remaining destructively interfering components (4 and 5) are both low in amplitude and at frequencies at which phase is changing rapidly. Therefore, we expect to see the supra-CF notch disappear when basal current is nulled. In the case in which apical current is nulled, we retain components 1, 2, and 3 and expect to retain the supra-CF notch. This expected behavior is observed in Fig. 9.

Consider the sub-CF notch. When we null the current basal to the location of measurement, we have eliminated the destructively interfering component 1 at which phase is varying most slowly. However, we maintain the other four destructively interfering components, some of which are at high amplitudes. Eliminating component 1 might decrease the prominence of the notch, but not eliminate it entirely. If instead we null the apical current, we lose four destructively interfering components (2–5), including the two at the highest amplitudes, so it is likely that the

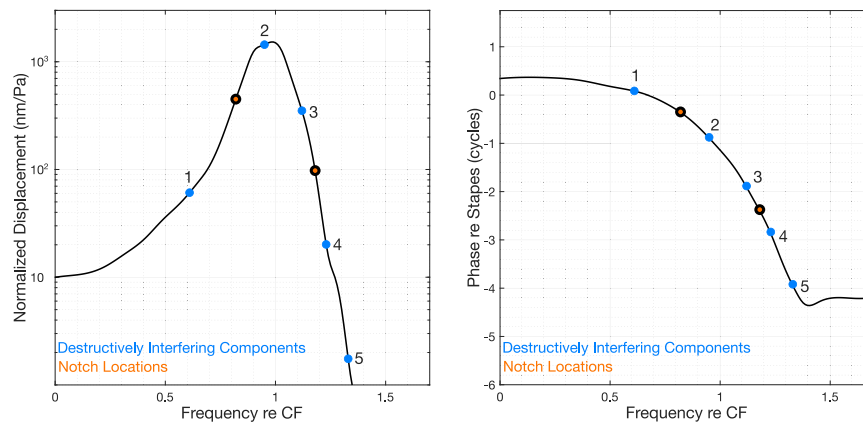


FIGURE 10 Exploration of the basis of prominent notches. Amplitude and phase of the BM displacement data used to generate the model input are given as in Fig. 2, except here the reference is stapes (so that all phase variation occurs within the cochlea). Highlighted in orange are the values of the amplitude and phase at the frequencies at which notches appear in our model predictions, ~ 0.8 CF and 1.2 CF. These correspond to phases of 0.36 and 2.36 cycles. Highlighted in blue are values corresponding to frequencies at which the phases are half of a cycle off from the phase at the notch frequencies. Current components at the frequencies in blue will interfere destructively with those in orange. To see this figure in color, go online.

sub-CF notch will be greatly reduced in prominence, if not eliminated. This is what is seen in Fig. 9, in which the sub-CF notch is lowered in prominence by nulling basal current and nearly eliminated by nulling apical current.

To summarize, the FEM sub-CF notch is due to interference between basal, local, and apical components, whereas the supra-CF notch (and subsequent phase level off) is due mostly to interference between local and basal components. The reduced phase accumulation in the model compared to experiment is reasonably due to a lesser contribution of basal OHCs to the ST current in the real cochlea than in the symmetrically scaled FEM model.

Phase cancellation is one source of notches in the CM. We briefly consider CM predictions when notches are present in the current source itself in the Supporting materials and methods.

Experimental result relating to CM locality

In the experimental results reported in (4), LCM was measured before and after intravenous furosemide was used to reduce endocochlear potential. A previously unexplained finding from that study is replotted in Fig. 11, which shows LCM responses close to the BM before and after recovery from furosemide. The phase accumulation postfurosemide was greater than prefurosemide, and a supra-CF notch was reduced. We explored this finding with the FEM; we first hypothesized that the changes postfurosemide were due to the lateral wall becoming more leaky, as has been observed (45). A leaky outer wall would be equivalent to reducing K . However, as shown above, reducing K did not produce a substantial increase in phase accumulation. Another possible explanation was that after furosemide, the more basal regions did not recover fully, which would serve to partially null the basal responses. Based on the FEM results, in which basal nulling allowed local currents to remain dominant at frequencies above the peak, this is the more likely explanation. The explanation is supported by the observation that the recovery of high-frequency DPOAEs was typically incomplete after recovery from intravenous furosemide (4,46).

Comparison to previous studies

The CM has long been recognized as a readout of cochlear operation; the challenge of using this multisource voltage to draw conclusions about cochlear operation has also been recognized. The CM is often and most easily measured at the round window. A recent study using suppression techniques to measure cochlear tuning with the round window CM found that the dominance of responses from the close-by, basal OHCs obscured the measurable tuning of nonbasal regions (16). That study was undertaken in part to understand the surprisingly small difference between round window CM in wild-type and prestin knock-out mice. Analysis employed a cable-based model with OHCs contributing with an exponential weighting corresponding to their distance from the round window. On the other hand, another experimental and modeling study based on suppression techniques and the round window CM found that spectral ripples were due to interference between apical and basal cochlear responses; thus, round window CM can be used to probe nonbasal regions (47). Measurements of local (measured close to or even within the sensory tissue) and semilocal (measured within the scalae not particularly close to the sensory tissue) CM have been used to compare CM with BM motion, as a way to bridge the gap between BM and HB motion (3,6,15,48). To use LCM to predict OHC responses, these studies employed cable-based models with OHCs contributing with an exponential weighting corresponding to their distance from the measurement location. The space constant of that exponential weighting has been ascribed a range of values, from $40 \mu\text{m}$ (6) to $1\text{--}2 \text{ mm}$ (in a semilocal CM study) (15). With the larger space constant values, the predicted CM tuning was washed out relative to BM tuning except at the lowest sound pressure levels, and sub-BF notches were predicted at moderate SPL (15). These predictions matched experimentally measured semilocal CM and were used to argue that HB motion was similar to BM displacement. With the smaller space constants, the LCM was predicted to follow BM displacement rather closely, which was what was experimentally measured in

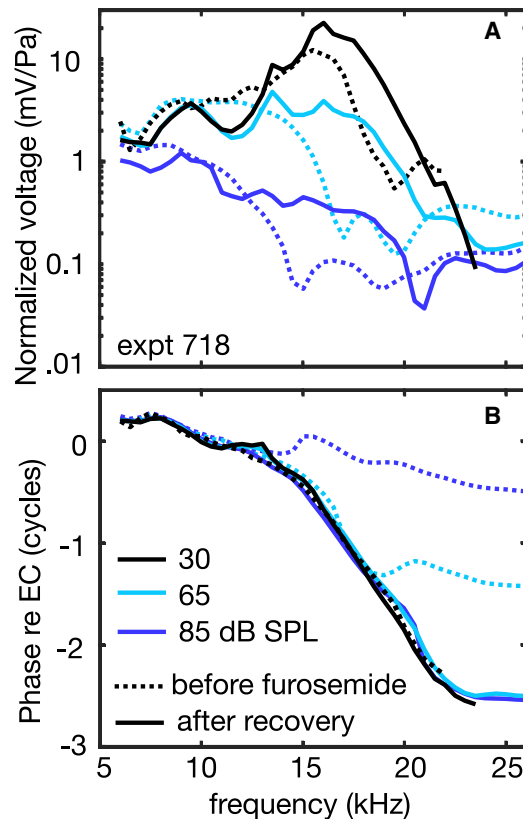


FIGURE 11 Experimental data related to model prediction with basal current nulled or reduced. CM is measured close to the BM, before administering furosemide and after recovery from furosemide (3.5 h later). (A) Normalized voltage amplitude. (B) Phase relative to EC. Note that traveling-wave phase accumulation is present even at high SPLs after recovery, indicating that the response was more local after recovering from furosemide than it was before furosemide. A reasonable explanation is that the more basal region had not recovered fully from furosemide and was partially nulled, reducing the interference of nonlocal basal current. To see this figure in color, go online.

the LCM experiments, supporting the choice of a small space constant (3,6). The space constant values were not simply chosen to fit CM data; they were backed up by direct measurements of voltage drop off from a current injection site (6,17). Thus, different measurements can arrive at a rather wide range of space constant values. In our study, a finite element mesh was used to model current flow in the ST, and characterization by a space constant was not a possible simplification. We noted above that the space constant can be made arbitrarily small, and thus, LCM predictions can be fully dominated by local OHCs in a cable model of cochlear current flow. This is not possible with the more realistic FEM approach and exposes a limitation of the predictions of simple cable-based models of CM.

CONCLUSIONS

Through the use of an FEM for the electrical properties of the ST, we have predicted the shape, size, and spatial variation of

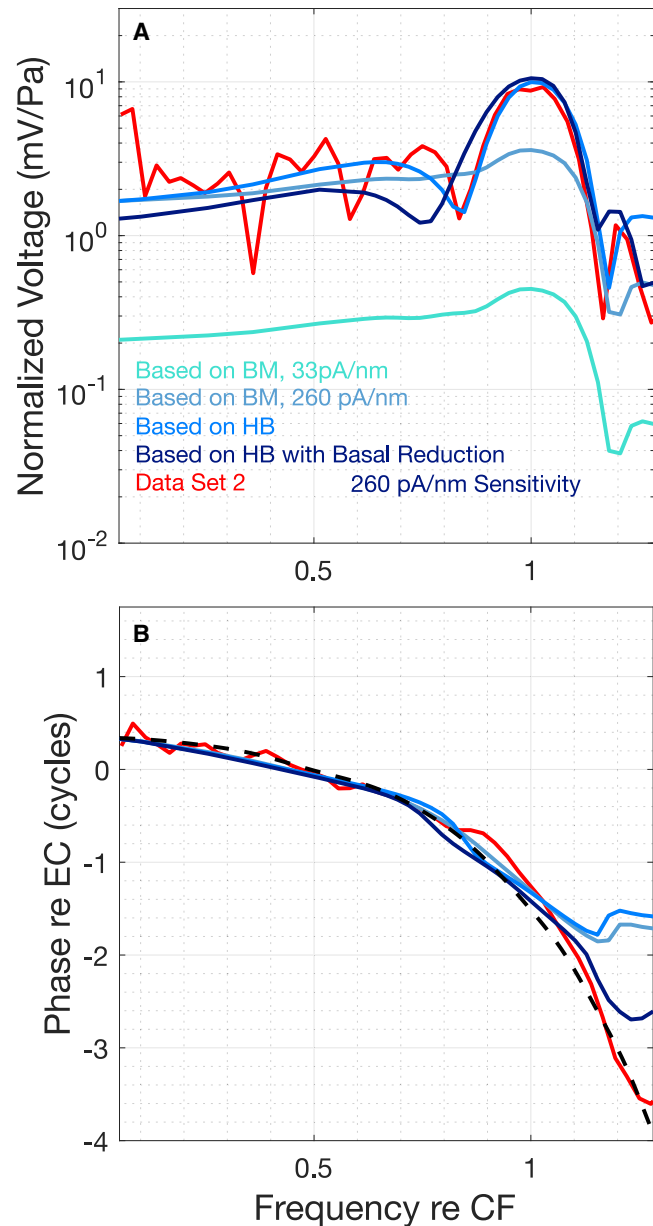


FIGURE 12 Amplitude (A) and phase (B) of experimental data set 2 (40 dB SPL) and LCM predictions as the current source representation progressed. The current source was initially represented in the model as proportional to BM displacement and transducer gain estimated from in vitro findings (cyan), then with increased transducer sensitivity (light blue), then enhanced tuning (medium blue), and finally reduction of the current sources basal to the measurement location (dark blue), which produced a more realistic phase accumulation. The phase of the current source was not changed and is included in a dashed line. To see this figure in color, go online.

the CM to explore the relationships between BM motion and HB motion and between HB motion and OHC current. Comparing the model output to experimental CM data, we found that OHC current (and thus HB displacement) must be more highly tuned than BM responses to produce the measured CM. We also found that OHC current/HB

displacement sensitivity in the gerbil base is ~ 200 pA/nm, ~ 4 times larger than what in vitro experiments have measured. Finally, to predict the measured phase excursion through several cycles, we found that we needed to reduce the amplitude of the basal current; a reduction by half was reasonably successful. (This reduction might be due to the fragile cochlear base and not present in a completely healthy cochlea (4).) This progression of the model's current source is illustrated in Fig. 12, and these predicted current source properties are the primary findings of this study.

This model could be advanced to address additional questions. The experimentally measured (in gerbil) shift of the LCM phase relative to BM displacement, occurring at a frequency ~ 0.7 times the CF, was not predicted by this FEM and is thought to be key to cochlear amplification (3,24). Exploring this further with the FEM will require a more complex current source, based on HB motion predicted by micro-mechanical models and/or emerging experimental data. Fig. S4 is a first attempt. This model could also be modified to address round window CM (47). Of particular interest are the spectral ripple patterns observed in these measurements, in which the CM magnitude response exhibits many notches and peaks over a broad spectrum. To adapt our model to address CM measured at the round window, the geometry and source current would be changed to the animal of interest, the voltage would be recorded at the semicircular surface representing the base of the cochlea, and a model of the electrical properties of the round window would be implemented. Finally, incorporation of HB current saturation into the model would allow it to probe this key and incompletely characterized aspect of cochlear operation (49).

SUPPORTING MATERIAL

Supporting material can be found online at <https://doi.org/10.1016/j.bpj.2021.08.010>.

ACKNOWLEDGMENTS

We are indebted to Yi Wang and Tianying Ren for sharing data and thank Karl Grosh, Erika Fallah, and C. Elliott Strimbu for commenting on the manuscript.

This work was supported by the National Institute on Deafness and Other Communication Disorders grant DC015362 and the Emil Capita Foundation.

REFERENCES

- Olson, E. S. 2020. Mechanics of the Cochlea. In *Volume II, Audition in The Senses: A Comprehensive Reference*, Reference Module in Neuroscience and Biobehavioral Psychology, Second Edition. Elsevier Publishing, pp. 1–27.
- Dallos, P., and M. A. Cheatham. 1976. Production of cochlear potentials by inner and outer hair cells. *J. Acoust. Soc. Am.* 60:510–512.
- Dong, W., and E. S. Olson. 2013. Detection of cochlear amplification and its activation. *Biophys. J.* 105:1067–1078.
- Wang, Y., E. Fallah, and E. S. Olson. 2019. Adaptation of cochlear amplification to low endocochlear potential. *Biophys. J.* 116:1769–1786.
- Charaziak, K. K., C. A. Shera, and J. H. Siegel. 2017. Using cochlear microphonic potentials to localize peripheral hearing loss. *Front. Neurosci.* 11:169.
- Fridberger, A., J. B. de Monvel, ..., A. Nuttall. 2004. Organ of Corti potentials and the motion of the basilar membrane. *J. Neurosci.* 24:10057–10063.
- Dallos, P. 2003. Organ of Corti kinematics. *J. Assoc. Res. Otolaryngol.* 4:416–421.
- Ren, T., W. He, and D. Kemp. 2016. Reticular lamina and basilar membrane vibrations in living mouse cochleae. *Proc. Natl. Acad. Sci. USA.* 113:9910–9915.
- Cooper, N. P., A. Vavakou, and M. van der Heijden. 2018. Vibration hotspots reveal longitudinal funneling of sound-evoked motion in the mammalian cochlea. *Nat. Commun.* 9:3054.
- Fallah, E., C. E. Strimbu, and E. S. Olson. 2019. Nonlinearity and amplification in cochlear responses to single and multi-tone stimuli. *Hear. Res.* 377:271–281.
- Strimbu, C. E., N. C. Lin, and E. S. Olson. 2018. Optical coherence tomography reveals complex motion between the basilar membrane and organ of corti in the gerbil cochlea. *J. Acoust. Soc. Am.* 143:1898.
- Chen, F., D. Zha, ..., A. L. Nuttall. 2011. A differentially amplified motion in the ear for near-threshold sound detection. *Nat. Neurosci.* 14:770–774.
- Lee, H. Y., P. D. Raphael, ..., J. S. Oghalai. 2016. Two-dimensional cochlear micromechanics measured in vivo demonstrate radial tuning within the mouse organ of corti. *J. Neurosci.* 36:8160–8173.
- Streltsoff, D. 1973. A computer simulation of the generation and distribution of cochlear potentials. *J. Acoust. Soc. Am.* 54:620–629.
- Patuzzi, R. B. 1987. A model of the generation of the cochlear microphonic with nonlinear hair cell transduction and nonlinear basilar membrane mechanics. *Hear. Res.* 30:73–82.
- Cheatham, M. A., K. Naik, and P. Dallos. 2011. Using the cochlear microphonic as a tool to evaluate cochlear function in mouse models of hearing. *J. Assoc. Res. Otolaryngol.* 12:113–125.
- Johnstone, B. M., J. R. Johnstone, and I. D. Pugsley. 1966. Membrane resistance in endolymphatic walls of the first turn of the Guinea-pig cochlea. *J. Acoust. Soc. Am.* 40:1398–1404.
- Ayat, M., P. D. Teal, and M. McGuinness. 2014. An integrated electro-mechanical model for the cochlear microphonic. *Biocybern. Biomed. Eng.* 34:206–219.
- Ramamoorthy, S., N. V. Deo, and K. Grosh. 2007. A mechano-electro-acoustical model for the cochlea: response to acoustic stimuli. *J. Acoust. Soc. Am.* 121:2758–2773.
- Briaire, J. J., and J. H. Frijns. 2000. 3D mesh generation to solve the electrical volume conduction problem in the implanted inner ear. *Simul. Pract. Theory.* 8:57–73.
- Hanekom, T. 2001. Three-dimensional spiraling finite element model of the electrically stimulated cochlea. *Ear Hear.* 22:300–315.
- Nogueira, W., D. Schurzig, ..., W. Würfel. 2016. Validation of a cochlear implant patient-specific model of the voltage distribution in a clinical setting. *Front. Bioeng. Biotechnol.* 4:84.
- He, D. Z. Z., S. Jia, and P. Dallos. 2004. Mechano-electrical transduction of adult outer hair cells studied in a gerbil hemicochlea. *Nature.* 429:766–770.
- Nankali, A., Y. Wang, ..., K. Grosh. 2020. A role for tectorial membrane mechanics in activating the cochlear amplifier. *Sci. Rep.* 10:17620.
- Kennedy, H. J., M. G. Evans, ..., R. Fettiplace. 2003. Fast adaptation of mechano-electrical transducer channels in mammalian cochlear hair cells. *Nat. Neurosci.* 6:832–836.

26. Johnson, S. L., M. Beurg, ..., R. Fettiplace. 2011. Prestin-driven cochlear amplification is not limited by the outer hair cell membrane time constant. *Neuron*. 70:1143–1154.
27. Ren, T., W. He, and E. Porsov. 2011. Localization of the cochlear amplifier in living sensitive ears. *PLoS One*. 6:e20149.
28. Edge, R. M., B. N. Evans, ..., P. Dallos. 1998. Morphology of the unfixed cochlea. *Hear. Res.* 124:1–16.
29. Plassmann, W., W. Peetz, and M. Schmidt. 1987. The cochlea in gerbil-line rodents. *Brain Behav. Evol.* 30:82–101.
30. Gulley, R. L., and T. S. Reese. 1976. Intercellular junctions in the reticular lamina of the organ of Corti. *J. Neurocytol.* 5:479–507.
31. Nin, F., T. Yoshida, ..., H. Hibino. 2017. Computer modeling defines the system driving a constant current crucial for homeostasis in the mammalian cochlea by integrating unique ion transports. *NPJ Syst. Biol. Appl.* 3:24.
32. Risoud, M., J. Sircoglou, ..., N.-X. Bonne. 2017. Imaging and cell count in cleared intact cochlea in the Mongolian gerbil using laser scanning confocal microscopy. *Eur. Ann. Otorhinolaryngol. Head Neck Dis.* 134:221–224.
33. Zweig, G. 1991. Finding the impedance of the organ of Corti. *J. Acoust. Soc. Am.* 89:1229–1254.
34. Zweig, G. 1976. Basilar membrane motion. *Cold Spring Harb. Symp. Quant. Biol.* 40:619–633.
35. Sondhi, M. M. 1978. Method for computing motion in a two-dimensional cochlear model. *J. Acoust. Soc. Am.* 63:1468–1477.
36. Müller, M. 1996. The cochlear place-frequency map of the adult and developing Mongolian gerbil. *Hear. Res.* 94:148–156.
37. Olson, E. S. 1998. Observing middle and inner ear mechanics with novel intracochlear pressure sensors. *J. Acoust. Soc. Am.* 103:3445–3463.
38. Shera, C. A., and N. P. Cooper. 2013. Basilar-membrane interference patterns from multiple internal reflection of cochlear traveling waves. *J. Acoust. Soc. Am.* 133:2224–2239.
39. Olson, E. S. 2013. Fast waves, slow waves and cochlear excitation. *J. Acoust. Soc. Am.* 133:050134.
40. Peterson, L. C., and B. P. Bogert. 1950. A dynamical theory of the cochlea. *J. Acoust. Soc. Am.* 22:84.
41. Shera, C. A., and J. J. Guinan, Jr. 1999. Evoked otoacoustic emissions arise by two fundamentally different mechanisms: a taxonomy for mammalian OAEs. *J. Acoust. Soc. Am.* 105:782–798.
42. Overstreet, E. H., III, A. N. Temchin, and M. A. Ruggero. 2002. Basilar membrane vibrations near the round window of the gerbil cochlea. *J. Assoc. Res. Otolaryngol.* 3:351–361.
43. Faes, T. J., H. A. van der Meij, ..., R. M. Heethaar. 1999. The electric resistivity of human tissues (100 Hz–10 MHz): a meta-analysis of review studies. *Physiol. Meas.* 20:R1–R10.
44. Misrahy, G. A., K. M. Hildreth, ..., W. J. Gannon. 1958. Electrical properties of wall of endolymphatic space of the cochlea (guinea pig). *Am. J. Physiol.* 194:396–402.
45. Videhult Pierre, P., J. E. Rasmussen, ..., G. Laurell. 2020. High-dose furosemide enhances the magnetic resonance signal of systemic gadolinium in the mammalian cochlea. *Otol. Neurotol.* 41:545–553.
46. Strimbu, C. E., Y. Wang, and E. S. Olson. 2020. Manipulation of the endocochlear potential reveals two distinct types of cochlear nonlinearity. *Biophys. J.* 119:2087–2101.
47. Charaziak, K. K., J. H. Siegel, and C. A. Shera. 2018. Spectral ripples in round-window cochlear microphonics: evidence for multiple generation mechanisms. *J. Assoc. Res. Otolaryngol.* 19:401–419.
48. Dallos, P. 1985. Response characteristics of mammalian cochlear hair cells. *J. Neurosci.* 5:1591–1608.
49. Zhou, W., and J.-H. Nam. 2019. Probing hair cell's mechano-transduction using two-tone suppression measurements. *Sci. Rep.* 9:4626.