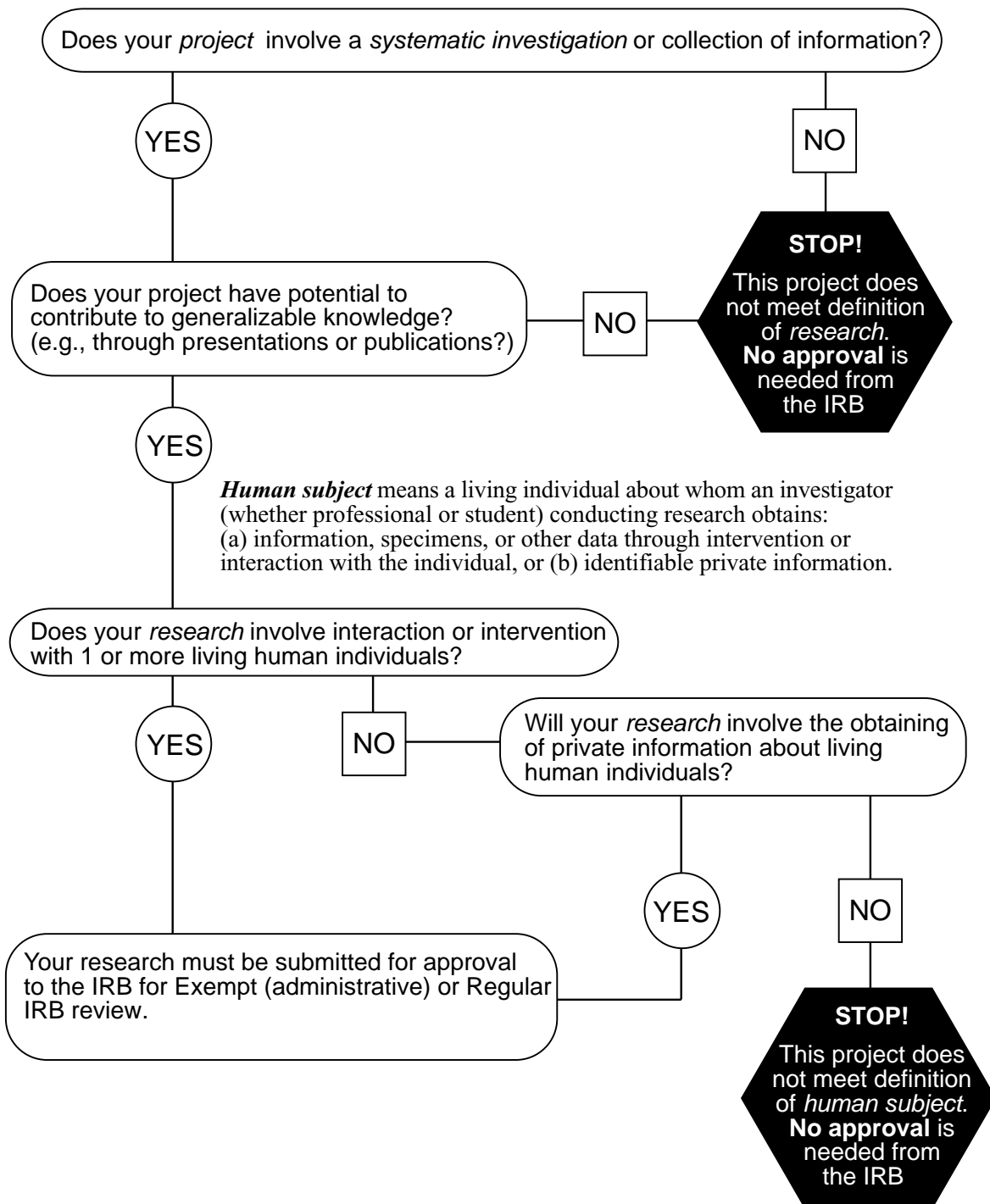


**Research** means a systematic investigation, including research, development, testing and evaluation, designed to develop or contribute to generalizable knowledge. Activities which meet this definition constitute research for the purposes of this policy, whether or not they are conducted or supported under a program which is considered research for other purposes.



NOTE: If your research involves pregnant women, prisoners, or human fetuses it *does not* qualify for exempt review. It must be submitted to the IRB for Full board review.