



## INSIGHT STUDIO

Insight 5.0 makes building collections quick and easy. New in version 5.0, Insight Studio simplifies the process of building collections, managing users, and adding content. Insight Studio is a wizard based application with integrated help and dynamic tools to get you going.

### *Building Collections with Insight Studio*

Once a collection manager is installed, Insight Studio guides you through each step of building a collection: from selecting a collection name, to creating a background image or theme, to choosing a data schema, and publishing your collection. Insight Studio configures all aspects of your collection, so you can focus on the content creation process. Once your collection is built, you can continue to use Insight Studio to add content in bulk, manage users and access permissions, and update your collection's look-and-feel.

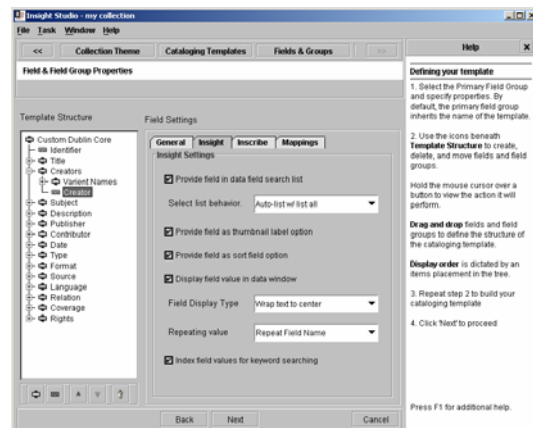
### *Choosing a Theme*

All Insight Collections use a theme to give a collection a custom appearance and feel. Insight Studio makes creating and managing themes quick; simply choose a background image, and Insight Studio will crop & apply the theme for both BrowserInsight and the Insight Java Client. Themes can even be reused across multiple collections to provide a consistent institutional look and feel.

### *Cataloging Templates*

Insight 5.0's Cataloging Templates are revolutionary. Instead of building a metadata model from scratch each time you create a collection, you create a cataloging template once and then reuse it for each collection.

Insight Studio supports multiple cataloging templates, so you can pick and choose the right schema for each collection. Each time you build a collection, you can reuse an existing template or create a custom one -- adding fields, setting validation options, and configuring display settings. Cataloging templates maintain all the information about a collection's data. Specifically, cataloging templates include the fields in a data schema as well as the structure they exist within, data validation rules, data types, display settings, and searching settings.

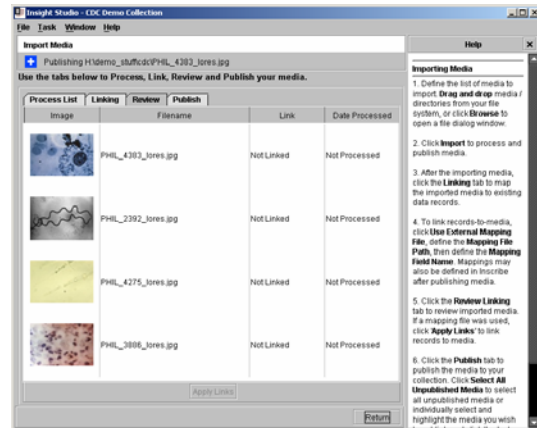


Building templates is quick and easy; either start with an existing template and modify it, or start from scratch. Cataloging templates can represent simple and complex data schema such as Dublin Core and the VRA, as well

as completely custom structures. Don't like the field names in an existing cataloging template? Rename them for your template. Need to add a new field or repeating group? Create a new template from an existing one by changing field order, names, adding new fields, removing fields, or create completely custom structures for your data. The possibilities are endless.

### ***Importing Media***

Importing and managing media with Insight Studio is a matter of drag-and-drop. Simply select the media on your local machine and drag-and-drop it onto Insight Studio. Insight Studio will then, automatically, import the media and upload it to the server. Insight leverages the Open Standard JPEG2000 media format to store images on the server, ensuring quality, performance, and optimization of storage requirements. Insight's JPEG2000 format is visually lossless while creating a file which is roughly 10-20% of the original size. Insight supports a wide range of image and media formats for import including JPEG, TIFF (with or without LZW), PNG, BMP, and common media formats that QuickTime supports.



### ***Importing Data***

Have lots of data? Insight Studio was built for bulk. For small edits, Inscribe allows users to add and modify specific records, but if you have more than 50 records to import, Insight Studio's new bulk import tool is right for you. Not sure how to create a template? Insight Studio can automatically generate a template for you to use with FileMaker, Access, or Excel to quickly create base records, or to simplify the mapping process. Choose from TAB or Comma-separated value files to quickly and easily import your data into Insight.

### ***Managing Users***

User management has never been easier. Insight Studio enables you to quickly create new users and grant them access to collections. As you add a user, you can immediately assign access to collections and other resources. Later on, if you add a collection, you can assign access to users as you add the resource. As you continue to add collections you can easily assign access to users along the way.

### ***Managing Security***

Insight creates a series of default security profiles with each collection, ranging from a guest account with limited access to an administrative account with full rights & privileges. These profiles may be assigned to one or many users as needed. As with all other settings in Insight, you can customize any of the preset profiles, create new profiles, and add IP Authentication as well.

### ***Advanced Configurations***

Insight Studio is designed to manage and support most Insight configurations; however, if users require more dynamic environments, the Insight Administrator Tools allow users to custom configure all aspects of a collection, with all of the flexibility Insight Customers have come to expect.

#### **Features available using the Insight Administrative Tools**

- creation and management of multi-page documents
- custom configuration of collections
- advanced validation rules
- configuration of database interaction

#### **Feature comparison between the Insight Administrator Tools, Inscribe, and Insight Studio**

<b>Tasks</b>	<b>Admin Tools</b>	<b>Insight Studio</b>	<b>Inscribe</b>
Create Collections	NO	YES	NO
Create Cataloging Templates	NO	YES	NO
Bulk Import Data from Text Files	NO	YES	NO
Bulk Import Data from Data Tables (indexer)	YES	NO	NO
create new data records (manual)	NO	NO	YES
modify existing records (manual)	NO	NO	YES
<b>Process Media</b>			
Process JPEG2000 Files	YES	YES	NO
Process MrSID Files	YES	NO	NO
Map Objects to Media (manual)	YES	NO	YES
Map Objects to Media (bulk)	YES	YES	NO
Upload Media to Media Manager	NO	YES	NO
<b>Other</b>			
Modify Collection Properties	YES	YES	NO
Modify Cataloging Templates	YES	NO	NO
update thumbnail caches (soft-restart)	YES	NO	NO
Create multi-page documents	YES	NO	NO