

Columbia University
in the City of New York

LIBRARY



CITY MISSION DOCUMENT, NO. 9.

A

CHURCH DIRECTORY

FOR

NEW YORK CITY.

BY

LEWIS E. JACKSON



NEW YORK CITY MISSION,
30 BIBLE HOUSE,
THIRD-AVENUE AND ASTOR-PLACE.
1867.

978V48
512

BY

LEWIS E. JACKSON

CHURCH DIRECTORY.

CHURCHES BELOW FOURTEENTH-STREET.

GIVING THE BOUNDARIES OF THE WARDS, THE POPULATION,
AND THE NUMBER OF CHURCHES, CHAPELS, BETHELS, AND
MISSIONS OF ALL KINDS.

First Ward. All the city below Liberty-st. Popula-
tion, 17,373.

1. Trinity, Protestant Episcopal, Broadway, cor. Rector-st.
2. Bethel, Meth. Episcopal, foot of Carlisle-st.
3. City Mission, 27 Greenwich-st.
Protestant Episcopal Mission, 22 South-st.
2 Protestant Sabbath-schools.

Second Ward. Bounded by Spruce, Ferry, East River,
Park-row, Broadway, and Liberty. Population, 2,507.

4. John-st. Meth. Episcopal, John, near Nassau.
5. North Reformed Dutch, Fulton, cor. William.
2 Protestant Sabbath-schools.

Third Ward. Bounded by Reade, Broadway, North
River, and Liberty. Population, 3,757.

6. St. Paul's, Prot. Episcopal, Broadway, cor. Fulton.
7. St. Peter's, Roman-catholic, Barclay, cor. Church.
German Mission, Greenwich, cor. Cortlandt.
2 Protestant and 1 Roman-catholic Sabbath-schools.

Fourth Ward. Bounded by Catharine, East River, Chatham, Spruce, and Ferry. Population, 21,994.

8. Oliver-st. Mariners' Temple, Baptist, Oliver, cor. Henry.
9. Mariners' Ch. of N. Y. Port Soc'y, Madison, cor. Catharine.
10. James-st. Roman-catholic, James, near New Bowery.
11. Howard Mission, 40 New Bowery.
12. Mission of New York Port Society, Dover, cor. Water.
13. Jews' Synagogue, Chatham, near Roosevelt.
City Mission.
- 4 Protestant and 1 Roman-catholic Sabbath-schools.

Fifth Ward. Bounded by Canal-st., Broadway, North River, and Reade-st. Population, 22,337.

14. St. John's, Prot. Episcopal, Varick, opposite St. John's Park.
15. Laight-st., Baptist Laight, cor. Varick.
16. Bethel, Prot. Episcopal, foot of Hubert-st.
17. City Mission, 74 West Broadway.
18. Methodist Episcopal Mission, 21 Worth-st.
Methodist Episcopal Mission, Franklin-st.
- 3 Protestant Sabbath-schools.

Sixth Ward. Bounded by Canal, Bowery, Broadway, and Chatham. Population, 26,696.

19. Five Points House of Industry, 155 Worth-st.
20. Ladies' Methodist Episcopal Mission, 61 Park-st.
21. Duane st., Roman-catholic, Duane, cor. City-Hall-place.
22. Mott-st., Roman-catholic, Mott-st., cor. Park.
23. Italian Mission, 110 Centre-st.
24. Centre-st. Mission, 110 Centre-st.
25. St. Matthew's, Lutheran, Walker-st., near Broadway.
26. City Mission, 122 Leonard-st.
- 6 Protestant and 2 Roman-catholic Sabbath-schools.

Seventh Ward. Bounded by Division, Grand, East River, and Catharine-st. Population, 39,982.

27. Presb. Church, Sea and Land, Market, cor. Henry.
28. Jewish Synagogue, 45 East Broadway.
29. Jews' Synagogue, 38 Henry-st.
30. German Presbyterian, 290 Madison-st.
31. All Saints', Prot. Episcopal, Henry, cor. Scammel.

32. Madison-st., Prot. Episcopal Mission, 256 Madison.
33. Bethel, Prot. Episcopal, foot of Pike-st.
34. Roman-catholic, Henry, cor. Rutgers.
35. Baptist Church, Madison, cor. Gouverneur.
36. Second Advent, 68 East Broadway.
37. City Mission, 327 and 290 Madison-st.
Swedish Lutheran Mission, 52 Market-st.
Union Mission, 473 Grand-st.
- 7 Protestant, 1 Roman-catholic, and 1 Second Advent Sabbath-schools.

Eighth Ward. Bounded by Houston, Broadway, North River, and Canal-st. Population, 39,406.

38. Macdougall-st. Baptist, Macdougall, opposite Vandam.
39. Duane Methodist Episcopal, Hudson, near Spring.
40. Greene-st. Meth. Episcopal, Greene-st., near Broome.
41. Spring-st. Presbyterian, Spring, near Varick.
42. Asso. Ref. Presbyterian, Houston, cor. Thompson.
43. St. Ambrose, Prot. Episcopal, Thompson, cor. Prince.
44. St. Alphonsos, Roman-catholic, Thompson, near Canal.
45. St. Anthony's, Roman-catholic, 155 Sullivan.
46. German Evangel. Mission, Hudson, near Spring.
47. City Mission, 286 Spring.
48. Canal-st. Presbyterian Church, Greene, near Canal.
Missions, 138 Laurens-st., and 545 Greenwich-st.
49. Mission, Thompson, cor. Houston.
11 Protestant and 2 Roman-catholic Sabbath-schools.
Alexander Mission, 9 King-st.

Ninth Ward. Bounded by Fourteenth-st., Sixth-av., North River, and West Houston-st. Population, 44,385.

50. Abyssinia Baptist, colored, 166 Waverley-place.
51. Antioch Baptist, 264 Bleecker-st.
52. Berean Baptist, Downing, cor. Bedford.
53. Union Reformed Dutch, 25 Sixth-av.
54. North Baptist, Christopher, cor. Bedford.
55. St. John's, Lutheran, 81 Christopher, near Bleecker.
56. Bedford-st. Meth. Episcopal, Bedford, cor. Morton.
57. Central Meth. Episcopal, Seventh-av., near Fourteenth-st.
58. Jane-st. Meth. Episcopal, Jane, near Eighth-av.

59. Zion Meth. Episcopal, colored, Bleecker, cor. W. Tenth-st.
 60. Thirteenth-st. Presbyterian, Thirteenth-st., near Sixth-av.
 61. United Presbyterian, Jane, near Eighth-av.
 62. United Presbyterian, Seventh-av., near Thirteenth-st.
 63. United Presbyterian, Charles, near Fourth.
 64. Reformed Presbyterian, Twelfth-st., near Sixth-av.
 65. True Reformed Dutch, Perry, cor. Fourth.
 66. Reformed Presbyterian, Eleventh-st., near Seventh-av.
 67. Annunciation, Prot. Epis., Fourteenth-st., near Seventh-av.
 68. St. John's Evang. Prot. Epis., Hammond, cor. Waverley-place.
 69. St. Luke's Prot. Episcopal, Hudson, opposite Grove.
 70. St. Joseph, Roman-catholic, Sixth-av., cor. W. Washington-pl.
 71. Universalist, Bleecker, cor. Downing.
 72. Ascension, Prot. Episcopal Mission, Abingdon-square.
 73. Messiah's Second Advent, Evangelical, 7 Seventh-av.
 74. Methodist Episcopal Mission, 117 Bank-street.
 75. Wesleyan Chapel, 204 Bleecker.
 76. City Mission, 593 Hudson.
 77. Reformed Presbyterian Mission, Hudson, cor. Christopher-st.
 78. Mission of Children's Aid Society, 204 Bleecker.
- 25 Protestant, 1 Roman-catholic, and 1 Universalist Sabbath-schools.

Tenth Ward. Bounded by Rivington, Norfolk, Bowery, and Division. Population, 29,004.

79. Welsh Baptist, 141 Chrystie.
 80. Jews' Synagogue, 78 Allen.
 81. Jews' Synagogue, 56 Chrystie.
 82. Jews' Synagogue, 63 Chrystie.
 83. Allen-st. Methodist Episcopal, 126 Allen.
 84. Forsyth-st. Methodist Episcopal, 10 Forsyth-st.
 85. Allen-st. Presbyterian, Allen, near Grand.
 86. Holy Martyrs, Protestant Episcopal, 39 Forsyth.
 87. City Mission.
 88. Synagogue, 91 Rivington.
- 6 Protestant Sabbath-schools.

Eleventh Ward. Bounded by Fourteenth, East River, Avenue B, and Rivington. Population, 59,571.

89. Sixth-st. Baptist, 211 Sixth.
90. Manhattan Reformed Dutch, 71 Avenue B, cor. Fifth-st.

91. Jews' Synagogue, Ridge, cor. East Houston.
92. Jews' Synagogue, 8 Clinton.
93. Jews' Synagogue, 156 Attorney.
94. Jews' Synagogue, Avenue C, cor. Fourth-st.
95. Lutheran, Avenue B, cor. Ninth-st.
96. German Methodist Episcopal, 252 Second.
97. Second-st. Methodist Episcopal, 276 Second.
98. Nativity, Protestant Episcopal, 70 Avenue C.
99. St. Bridget's, Roman-catholic, Avenue B, cor. Eighth-st.
100. Mercer-st. Presbyterian Mission, 118 Avenue D.
101. Seventh-st. Meth. Episcopal Mission, Fourth-st., cor. Av. C.
102. City Mission.
103. Mission, 333 East Twelfth-st.
104. Moravian Mission, Fourth-st., cor. Avenue C.
105. Mission, 435 East Houston.
 Second-st. Methodist Episcopal Mission, Third-st.
 12 Protestant, 1 Roman-catholic, and 2 Jewish Sabbath-schools.

Thirteenth Ward. Bounded by Rivington, East River, Norfolk, Division, and Grand. Population, 32,917.

106. Alanson, Methodist Episcopal, 52 Norfolk-st.
107. Willett-st. Methodist Episcopal, 7 Willett.
108. Methodist Protestant, 87 Attorney.
109. Seventh Presbyterian, Broome, cor. Ridge.
110. St. Mary's, Roman-catholic, Grand, cor. Ridge.
111. German Evangelical, Suffolk-st.
112. German Mission Meeting, 70 Columbia.
113. City Mission, 70 Columbia.
 McAlister Mission, Cannon, near Broome.
 Methodist Episcopal Mission, 313 Rivington.
 Seventh Presbyterian Mission, 203 Rivington.
 Mission, 15 Tompkins.
 9 Protestant and 1 Roman-catholic Sabbath-schools.

Fourteenth Ward. Bounded by Houston, Broadway, Bowery, and Canal-st. Population, 28,080.

114. First Baptist, Broome, cor. Elizabeth.
115. Presbyterian, colored, Prince, cor. Marion.
116. St. Patrick's Roman-catholic Cathedral, Mott, cor. Prince.
117. City Mission, 212 Grand-st.

Methodist Episcopal Mission, 392 Broome-st.
5 Protestant and 1 Roman-catholic Sabbath-schools.

Fifteenth Ward. Bounded by Fourteenth-st., Fourth-av., Bowery, Sixth-av., and Houston-st. Population, 27,587.

118. Collegiate Reformed Dutch, Lafayette-place, cor. Fourth-st.
119. Washington-sq. Ref. Dutch, Wooster, cor. Washington-place.
120. Washington-sq. Meth. Episcopal, Fourth-st., cor. Sixth-av.
121. Bethel, Meth. Episcopal, colored, 214 Sullivan.
122. First Presbyterian, Fifth-av., cor. Eleventh-st.
123. Mercer-st. Presbyterian, Mercer, near Eighth-st.
124. University-pl. Presbyterian, University-pl., cor. Tenth.
125. Ascension, Prot. Episcopal, Broadway, cor. Tenth-st.
126. Grace, Prot. Episcopal, Broadway, cor. Tenth-st.
127. St. Clement's, Prot. Episcopal, 108 Amity.
128. St. Philip's, Prot. Episcopal, col'd, 305 Mulberry, n. Bleecker.
129. St. Ann's, Roman-catholic, 149 Eighth-st., near Fourth-av.
130. Spiritualists, Clinton Hall, Eighth-st.
131. Believers, University, Wooster, near Waverley-pl.
132. Presbyterian Mission, 140 Sixth-av., near Eleventh-st.
133. Presbyterian Mission, Twelfth-st., near Sixth-av.
134. French Evangelical, 9 University-pl.
135. Spiritualists, Dodworth's, 806 Broadway.
136. Second Advent, Hope Chapel, 720 Broadway.
137. Prot. Episcopal City Mission, 304 Mulberry.
138. City Mission.
139. Prot. Episcopal Church, cor. Lafayette-pl. and Great Jones.
140. Mission, 180 Wooster.

Seventeenth Ward. Bounded by Fourteenth-st., Fourth-av., Avenue B, and Rivington-st. Population, 72,953.

141. First German Baptist.
142. Stanton-st. Baptist, 36 Stanton.
143. Tabernacle, Baptist, Second-av., near Tenth-st.
144. Welsh Congregational, 33 East Eleventh-st.
145. German Evangelical Mission, Houston, cor. Forsyth.
146. German Reformed Protestant, 129 Norfolk.
147. Jews' Synagogue, 146 Norfolk.
148. Jews' Synagogue, 41 Stanton.

149. Jews' Synagogue, 275 Ninth.
150. Jews' Synagogue, 84 East Twelfth-st.
151. Lutheran, 52 Sixth-st.
152. Seventh-st. Meth. Episcopal, Seventh-st., near Third-av.
153. Jews' Synagogue, 35 Sixth-st.
154. Fourteenth-st. Presbyterian, Fourteenth-st., cor. Second-av.
155. Sixth United Presbyterian, 33 East Eleventh-st.
156. Epiphany, Prot. Episcopal, 130 Stanton.
157. Redemption, Protestant Episcopal, 98 East Fourteenth-st.
158. St. Mark's, Prot. Episcopal, Stuyvesant, cor. Second-av.
159. Holy Redeemer, Roman-catholic, 165 Third-st.
160. Nativity, Roman-catholic, 46 Second-av.
161. St. Nicholas, Roman-catholic, 125 Second-st.
162. Second Universalist, Second-av., cor. Eleventh-st.
163. Christian Israelites, 108 First-st.
164. Seventh-day Baptist, Second-av., cor. Eleventh-st.
165. Welsh Methodist, 133 East Thirteenth-st.
166. German Prot. Episcopal Mission, Fourteenth-st., n. First-av.
167. Presbyterian Mission, Fourteenth-st., near First-av.
168. Preaching in Cooper Union.
169. Mission, First-av., cor. Fifth-st.
170. City Mission.
171. St. Mark's Prot. Episcopal Mission, 141 Avenue A.
 Wilson Mission, 137 Avenue A.
 Methodist Episcopal Mission, 146 Avenue A.
 Mission, Twelfth-st., near Avenue B.
 Second Ref. Presbyterian, Second-av., cor. Eleventh-st.

CHURCHES ABOVE FOURTEENTH-STREET.

GIVING THE BOUNDARIES OF THE WARDS, THE POPULATION,
 AND THE NUMBER OF CHURCHES, CHAPELS, BETHELs, AND
 MISSIONS OF ALL KINDS.

Sixteenth Ward. Bounded by Fourteenth-st., Twenty-sixth-st., Sixth-av., and North River. Population, 45,176.

172. South Baptist, Twenty-fifth-st., bet. Seventh and Eighth avs.
173. Sixteenth-st. Baptist, Sixteenth-st., near Eighth-av.

174. Northwest Reformed Dutch, Twenty-third-st., bet. Sixth and Seventh avs.
 175. Eighteenth-st. Meth. Epis., Eighteenth-st., near Eighth-av.
 176. Twenty-fourth-st. Meth. Episcopal, Twenty-fourth-st., near Ninth-av.
 177. African Union Meth. Episcopal, Fifteenth-st., n. Seventh-av.
 178. Chelsea Presbyterian, Twenty-second-st., near Ninth-av.
 179. Presbyterian Mission Chapel, Seventh-av., near Eighteenth-st.
 180. Colored Presbyterian, 231 W. Sixteenth-st., bet. Seventh and Eighth avs.
 181. Twenty-third-st. Presbyterian, Twenty-third-st., n. Seventh-av.
 182. Westminster Presbyterian, Twenty-second-st., n. Seventh-av.
 183. United Presbyterian, Twenty-fifth-st., near Seventh-av.
 184. Reformed Presbyterian, Twenty-third-st., between Seventh and Eighth avs.
 185. Presbyterian Mission, 282 W. Eighteenth-st., n. Tenth-av.
 186. St. Peter's Prot. Episcopal, Twentieth-st., near Ninth-av.
 187. Christ Church Prot. Episcopal Mission, Eighteenth-st., near Eighth-av.
 188. St. Columbia, Roman-catholic, Twenty-fifth-st., bet. Eighth and Ninth avs.
 189. St. Vincent de Paul, Roman-catholic, Twenty-third-st., near Sixth-av.
 190. Catholic Apostolic, Sixteenth-st., between Sixth and Seventh avs.
 191. Free-will Baptist, Seventeenth-st., near Sixth-av.
 192. Evangelical, 108 Twenty-fourth-st., near Sixth-av.
 193. Congregational Methodist, Twenty-fourth-st., n. Seventh-av.
 194. City Mission, 273 W. Twenty-fifth-st.
- Northwest Ref. Dutch Mission, 102 W. Twenty-fourth-st.
 South Ref. Dutch Mission, Ninth-av., cor. Twenty-fifth-st.
 Meth. Episcopal Miss., Seventh-av., cor. Twenty-second-st.
 West Twenty-third-st. Presbyterian Mission, 273 W. Twenty-third-st.
- Beulah Particular Baptist, Eighth-av., cor. Eighteenth-st.
 Alexander Presb. Church, Seventh-av., near Eighteenth-st.
 23 Protestant and 1 Roman-catholic Sabbath-school.

Eighteenth Ward. Bounded by Fourteenth-st., Twenty-sixth-st., Sixth-av., and East River. Population, 57,462.

195. Swedish Lutheran, Twenty-second-st., near Third-av.
 196. Calvary, Baptist, Twenty-third-st., near Sixth-av.
 197. Tabernacle, Baptist Mission, Twentieth-st., near Second-av.
 198. Church of the Puritans.
 199. South Reformed Dutch, Twenty-first-st., cor. Fifth-av.
 200. Twenty-first-st., Reformed Dutch, Twenty-first-st., n. Sixth-av.
 201. Friends' Meeting, Fifteenth-st., cor. Rutherford-pl.
 202. Friends' Meeting, Twentieth-st., near Third-av.
 203. Jews' Synagogue, 106 E. Twenty-third-st.
 204. Jews' Synagogue, Nineteenth-st., near Fifth-av.
 205. St. James', Lutheran, Fifteenth-st., near Third-av.
 206. St. Paul's, Lutheran, Sixth-av., cor. Fifteenth-st.
 207. Hedding, Meth. Episcopal, Seventeenth-st., near First-av.
 208. St. Paul's Meth. Episcopal, Fourth-av., cor. Twenty-second-st.
 209. Fifteenth-st. Presbyterian, Fifteenth-st., near Irving-pl.
 210. Fifth-av., Presbyterian, Fifth-av., cor. Nineteenth-st.
 211. Fourth-av. Presbyterian, Fourth-av., cor. Twenty-second-st.
 212. Madison-sq. Presbyterian, Madison-sq., cor. Twenty-fourth-st.
 213. Scotch Presbyterian, Fourteenth-st., near Sixth-av.
 214. Calvary, Prot. Episcopal, Fourth-av., cor. Twenty-first-st.
 215. Du Saint Esprit, French Prot. Episcopal, Twenty-second-st., near Sixth-av.
 216. Calvary, Mission Chapel, Twenty-third-st., near Third-av.
 217. Holy Communion, Prot. Epis., Sixth-av., cor. Twentieth-st.
 218. St. Ann's, Prot. Epis., Eighteenth-st., near Fifth-av.
 219. St. George's, Prot. Epis., Rutherford-pl., cor. Sixteenth-st.
 220. St. George's Mission Chapel, Nineteenth-st., near First-av.
 221. Trinity Chapel, Prot. Epis., Twenty-fifth-st., near B'way.
 222. Immaculate Conception, Rom-cath., Fourteenth-st., n. First-av.
 223. St. Francis Xavier, Rom-cath., Sixteenth-st., near Sixth-av.
 224. All Souls', Unitarian, Fourth-av., cor. Twentieth-st.
- City Missions, Twentieth-st., Twenty-fifth-st., and Avenue B.
 Presbyterian Mission, Second-av., cor. Twenty-third-st.
 Holy Saviour, Prot. Epis., Twenty-fifth-st., near Madison-av.
 St. Stephen's, Prot. Epis., 30 W. Twenty-second-st.
 United Brethren, Fourth-av., cor. Twenty-third-st.
 Grace Mission, Twenty-second-st., near First-av.
 Spanish Prot. Epis., in Trinity chapel, W. Twenty-fifth, n. B'way.

Twentieth Ward. Bounded by Twenty-sixth-st., Fortieth-st., Sixth-av., and North River. Population, 67,512.

225. Ebenezer, Bapt., Thirty-sixth-st., bet. B'way and Seventh-av.
226. Pilgrim, Baptist, Thirty-third-st., near Eighth-av.
227. Bethesda, colored, Congregational.
228. Fourth Ger. Mission, Twenty-ninth-st., near Seventh-av.
229. Thirty-fourth-st. Ref. Dutch, Thirty-fourth-st., n. Eighth-av.
230. Jews' Synagogue, Broadway, near Thirty-sixth-st.
231. Jews' Synagogue, Thirty-fourth-st., bet. Sixth and Seventh avs.
232. Jews' Synagogue, 138 W. Twenty-eighth-st.
233. Jews' Synagogue, 176 W. Twenty-third-st.
234. Jews' Synagogue, Twenty-ninth-st., cor. Eighth-av.
235. German Mission, 222 W. Fortieth-st.
236. Thirtieth-st. Meth. Episcopal, Thirtieth-st., bet. Eighth and Ninth avs.
237. St. Paul's Meth. Episcopal Mission, Seventh-av., cor. Twenty-sixth-st.
238. Trinity, Meth. Episcopal, Thirty-fourth-st., n. Eighth-av.
239. African Union Presb., 60 W. Thirtieth-st.
240. Presbyterian Mission, Thirty-third-st., cor. Eighth-av.
241. North Presbyterian, Ninth-av., cor. Thirty-first-st.
242. Twenty-eighth-st. Presb., Twenty-eighth-st., n. Ninth-av.
243. Brick Presb. Ch. Mission, Thirty-fifth-st., n. Seventh-av.
244. North Presb. Mission, Eighth-av., cor. Thirty-third-st.
245. Holy Apostles, Prot. Epis., Ninth-av., cor. Twenty-eighth-st.
246. Synagogue, 135 W. Thirty-ninth-st.
247. Holy Innocents, Roman-catholic, 94 W. Thirty-seventh-st. near Broadway.
248. St. Francis, Roman-catholic, 93 W. Thirty-first-st.
249. St. John Baptist, Roman-catholic, 125 W. Thirtieth-st.
250. St. Michael's, Roman-catholic, 254 W. Thirty-second-st.
251. Meth. Episcopal Mission, Thirty-fifth-st., near Tenth-av.
City Mission, 449 Eleventh-av.
Grand-st. Presb., Thirty-fourth-st., near Broadway.
German Mission, 312 W. Thirty-ninth-st.
German Mission, Sixth-av., cor. Thirty-ninth-st.
21 Protestant and 3 Roman-catholic Sabbath-schools.

Twenty-first Ward. Bounded by Twenty-sixth-st., Fortieth-st., Sixth-av., and East River. Population, 49,017.

- 252. Disciples, Twenty-eighth-st., near Broadway.
- 253. Madison-av., Baptist, Madison-av., cor. Thirty-first-st.
- 254. Broadway Tabernacle, Cong., Sixth-av., cor. Thirty-fourth-st.
- 255. Collegiate Ref. Dutch, Fifth-av., cor. Twenty-ninth-st.
- 256. Murray Hill Baptist, Lexington-av., cor. Thirty-seventh-st.
- 257. Friends' Meeting, Twenty-seventh-st., near Sixth-av.
- 258. Prot. Episcopal Mission, 557 Third-av., near Thirty-ninth-st.
- 259. Rose Hill Meth. Epis., Twenty-seventh-st., near Third-av.
- 260. Thirty-seventh-st. Meth. Epis., Thirty-seventh-st., n. Second-a.
- 261. Brick Presbyterian, Fifth-av., cor. Thirty-seventh-st.
- 262. Church of the Covenant, Presb., Park-av., cor. Thirty-fifth-st.
- 263. Madison-sq. Presb. Mission, 419 Third-av., near Thirty-first-st.
- 264. Rutgers, Presbyterian, Madison-av., cor. Twenty-ninth-st.
- 265. Incarnation, Prot. Epis., Madison-av., cor. Thirty-fifth-st.
- 266. Christ, Prot. Epis., Fifth-av., cor. Thirty-fifth-st.
- 267. Mediator, Prot. Epis., Lexington-av., cor. Thirtieth-st.
- 268. Reconciliation, Prot. Epis., 150 E. Thirty-first-st.
- 269. Atonement, Prot. Epis., Madison-av., cor. E. Twenty-eighth-st.
- 270. St. John Baptist, Prot. Epis., Lex'ton-av., cor. Thirty-fifth-st.
- 271. St. Matthias, Prot. Epis., Broadway, cor. Thirty-second-st.
- 272. Transfiguration, Prot. Epis., Twenty-ninth-st., n. Fifth-av.
- 273. Zion, Prot. Epis., Madison-av., cor. Thirty-eighth-st.
- 274. St. Gabriel's, Roman-catholic, 179 E. Thirty-sixth-st.
- 275. St. Stephen's, Rom.-cath., 93 E. Twenty-eighth-st., n. Third-av.
- 276. Ch. of the Messiah, Park-av., cor. Thirty-fourth-st.
- 277. Third Unitarian, Fortieth-st., near Sixth-av.
- 278. Swedenborgian, First New Ch., Thirty-fifth-st., n. Lex'ton-av.
- 279. Jews' Synagogue, Twenty-ninth-st., near Lexington-av.
City Mission.
Universalist, 65 W. Thirty-fifth-st.

Twenty-second Ward. Bounded by Fortieth-st., Eighty-sixth-st., Sixth-av., and North River. Population, 61,725.

- 280. Bethlehem Baptist, 395 W. Forty-fifth-st.
- 281. Bloomingdale Baptist, Forty-second-st., n. Seventh-av.

282. Central Presbyterian, W. Fiftieth-st., near Eighth-av.
283. Bloomingdale Ref. Dutch, Broadway, cor. Sixty-eighth-st.
284. St. Luke's, Lutheran, 208 W. Forty-third-st., n. Ninth-av.
285. St. John's, Meth. Epis., Fifty-third-st., near Eighth-av.
286. Forty-third-st. Meth. Epis., Forty-third-st., n. Eighth-av.
287. Janes' Mission, Meth. Epis., Forty-fourth-st., n. Ninth-av.
288. Eighty-fourth-st. Presb., Eighty-fourth-st., near Bloomingdale-road.
289. Forty-second-st. Presbyterian, Forty-second-st., n. Eighth-av.
290. Seventh United Presbyterian, Forty-fourth-st., n. Tenth-av.
291. Forty-second-st. Presbyterian Mission, Tenth-av., near Forty-third-st.
292. Fifty-third-st. Baptist, Fifty-third-st., near Seventh-av.
293. All Angels, Prot. Epis., Eighty-first-st., n. Eleventh-av.
294. Anthon Memorial. Prot. Epis., Forty-eighth-st., n. Seventh-av.
295. St. Timothy's, Prot. Epis., W. Fifty-seventh-st., n. Eighth-av.
296. Prot. Epis. Mission, Forty-third-st., near Ninth-av.
297. Assumption, Roman-catholic, Forty-ninth-st., n. Ninth-av.
298. Holy Cross, Roman-catholic, Forty-second-st., n. Ninth-av.
299. St. Paul's, Roman-catholic, Fifty-ninth-st., near Ninth-av.
300. Congregational, Forty-first-st., n. Sixth-av.
301. Wesleyan Methodist, Forty-eighth-st., near Ninth-av.
302. West Presbyterian Mission, Ninth-av., n. Fifty-second-st.
303. West Presbyterian Mission, Eighth-av., cor. Forty-fourth-st.
 Amity-st. Baptist, W. Fifty-fourth-st., near Eighth-av.
 German Baptist Mission, 254 W. Forty-seventh-st.
 German Baptist Mission, Sixty-eighth-st., cor. Eighth-av.
 Meth. Epis. Mission, Broadway, cor. Sixty-ninth-st.
 Prot. Epis. Mission, Eleventh-av., cor. Fifty-second-st.
 28 Protestant and 3 Roman-catholic Sabbath-schools.

Nineteenth Ward. Bounded by Fortieth-st., Eighty-sixth-st., Sixth-av., and East River. Population, 28,282.

304. Fifth-av. Baptist, Forty-sixth-st., near Fifth-av.
305. Yorkville Baptist, Eighty-third-st., near Second-av.
306. Collegiate Ref. Dutch, Fifth-av., cor. Forty-eighth-st.
307. Advent, Prot. Epis., Forty-sixth-st., bet. Fifth and Sixth avs.
308. Beekman Hill Meth. Epis., Fiftieth-st., n. Second-av.
309. Lexington-av. Meth. Epis., Lex'ton-av., cor. Fifty-second-st.

310. Meth. Epis. Mission, Third-av., cor. Seventieth-st.
311. Eleventh Presb., Fifty-fifth-st., near Lexington-av.
312. Lexington-av. Presb., Lexington-av., cor. Forty-sixth-st.
313. West Presb., on Reservoir-sq., Forty-second-st., n. Fifth-av.
314. Holy Trinity, Prot. Epis., Madison-av., cor. Forty-second-st.
315. Good Shepherd, Prot. Epis., Fifty-fourth-st., n. Second-av.
316. Prospect Hill Ref. Dutch, Eighty-fifth-st., n. Second-av.
317. St. Alban's, Prot. Epis., Lex'ton-av., cor. Forty-seventh-st.
318. Holy Sepulchre, Prot. Epis. Mission, Third-av., cor. Seventy-sixth-st.
319. Presbyterian, Fortieth-st., near Lexington-av.
320. St. Peter's, Lutheran, Fiftieth-st., near Third-av.
321. St. James', Prot. Epis., Sixty-ninth-st., n. Third-av.
322. Union Colored, Prot. Epis., Second-av., n. Eighty-fourth-st.
323. St. Boniface, Rom.-cath., Forty-seventh-st., n. Second-av.
324. St. John Evangelist, Rom.-cath., Fiftieth-st., n. Fifth-av.
325. St. Lawrence, Rom.-cath., Eighty-fourth-st., n. Fourth-av.
326. Universalist Mission, Third-av., near Fifty-second-st.
327. Park Presb. Church, Eighty-fifth-st., n. Third-av.
328. Universalist Church, Fifth-av., cor. Forty-fifth-st.
329. St. Thomas', Prot. Epis., Fifth-av., cor. Fifty-third-st.
330. Jews' Synagogue, Fifth-av., cor. Forty-third-st.
331. Baptist Mission, Third-av., cor. Fifty-second-st.
- City Mission.
- Meth. Epis. Mission, Sixty-first-st., near Third-av.
- Holy Trinity Mission, Eighty-fourth-st., n. Third-av.
- Emmanuel (German), Prot. Epis., Eighty-third-st., n. Third-av.
- Eleventh Presb. Mission, E. Fifty-second-st., n. Second-av.
- Reformation, Prot. Epis., 158 E. Fiftieth-st.
- 26 Protestant, 3 Roman-catholic, and 2 Universalist Sabbath-schools.
- Jews' Synagogue, Second-av., cor. E. Fifty-second-st.

Twelfth Ward. All of Manhattan Island above Eighty-sixth-st., from East River to North River. Population, 27,958.

332. Harlem Baptist, Fifth-av., n. 126th-st.
333. Harlem Ref. Dutch, Third-av., near 121st-st.
334. Harlem Congregational, Second-av., cor. 125th-st.
335. Washington Heights Ref. Dutch, Washington Heights.
336. Yorkville Lutheran, Eighty-seventh st., n. Fourth-av.

- 337. Harlem Meth. Epis., 125th-st., near Third-av.
- 338. Second-av. Meth. Epis., Second-av., n. 119th-st.
- 339. West Harlem Meth. Epis., 125th-st., near Sixth-av.
- 340. Yorkville Meth. Epis., Eighty-sixth-st., n. Fourth-av.
- 341. Harlem Presbyterian, 126th-st., near Third-av.
- 342. Manhattanville Presbyterian, 126th-st., near Ninth-av.
- 343. Mount Washington Presbyterian, near Kingsbridge.
- 344. Washington Heights Presbyterian, Washington Heights.
- 345. Yorkville Presbyterian, Eighty-sixth-st., near Fourth-av.
- 346. Intercession, Prot. Epis., 154th-st., cor. Tenth-av.
- 347. St. Andrew's, Protestant Episcopal, Harlem.
- 348. St. Mary's, Prot. Epis., Manhattanville.
- 349. St. Michael's, Prot. Epis., Broadway, cor. Ninety-ninth-st.
- 350. St. Paul's, Prot. Epis., Harlem.
- 351. Annunciation, Roman-catholic, Manhattanville.
- 352. St. Joseph's Roman-catholic, Ninth-av., cor. 126th-st.
- 353. St. Paul's, Roman-catholic, 117th-st., near Fourth-av.
City Mission.
Mission, Third-av., cor. 109th-st.
Harlem Universalist, Fourth-av., cor. 129th-st.

CLERGYMEN IN NEW YORK.

Abbot, Gorham D.,	39 East Thirty-eighth-st.
Adam, Matthew T.,	60 West Twenty-seventh-st.
Adams, John Q.,	264 Bleecker-st.
Adams, Wm.,	8 East Twenty-fourth-st.
Adler, Samuel,	226 East Thirty-third-st.
Alden, Joseph,	160 William-st.
Alexander, Samuel D.,	90 East Twenty-second-st.
Abbott, Lyman,	76 John-st.
Adams, Charles C.,	Manhattanville.
Anderson, Thomas D.,	768 Third-av.
Anderson, Richard K.,	34 Lewis-st.
Anson, Moses,	59 East Broadway.
Anthon, Edward,	3 Bible House.
Armitage, Thomas,	350 Broome-st.
Atwater, E. R.,	103 Fulton-st.
Annan, John E.,	(after Aug.) 114 E. Forty-eighth-st.
Archibald, G. D.,	151 West Twenty-second-st.
Backus, Jay S.,	39 Park-row.
Bacon, George W.,	329 Fourth-av.
Badger, Milton,	11 Bible House.
Bailey, S. W.,	128 East Sixteenth-st.
Baker, Francis A.,	Ninth-av., cor. Fifty-ninth-st.
Baker, Seymour A.,	231 West Forty-eighth-st.
Baldwin, Theron,	42 Bible House.
Barcroft, Jephtha,	249 Elizabeth st.
Barden, J. N.,	167 Mott-st.
Barnes, Reginald H.,	153 Hudson-st.
Barretta, John B.,	668 Second-av.
Battersby, Charles,	122 Leonard-st.
Beach, Alfred B.,	228 West Twentieth-st.
Belden, Wm.,	12 North Moore-st.
Bell, G. B.,	43 West Thirty-fifth-st.
Bellows, Henry W.,	59 East Twentieth-st.
Bellows, Joseph K.,	392 Broome-st.
Benjamin, Eastburn,	59 West Twenty-eighth-st.
Benning, Thomas C.,	28 West Twelfth-st.
Berky, Abraham,	23 Seventh-st.

Betker, John P.,	523 West Twenty-third-st.
Bidwell, Walter H.,	5 Beekman-st.
Bingham, L. G.,	103 Fulton-st.
Bishop, John L.,	108 First-st.
Bissell, Samuel B. S.,	599 Broadway.
Blair, Hugh H.,	34 Perry-st.
Blinn, Christian,	224 West Fortieth-st.
Bliss, Seth,	27 Irving-place.
Boardman, W. E.,	15 W. Twentieth-st.
Bondi, Jonas,	225 West Twenty-fifth-st.
Boole, Wm. H.,	229 East Thirty-seventh-st.
Barnard, F. A.,	Colum. Coll., Forty-ninth-st.
Barton, J. G.,	Free Acad., Twenty-third-st.
Benjamin, W. H.,	59 West Twenty-eighth-st.
Boyle, John,	179 East Forty-first-st.
Buel, Clarence,	239 West Twentieth-st.
Booth, Robert R.,	77 Ninth-st.
Borngen, Herman,	198 W. Thirty-eighth-st.
Botsford, Alfred P.,	141 E. Eighty-sixth-st.
Bourne, George W.,	200 E. Twenty-fifth-st.
Bourne, R. H.,	141 W. Forty-ninth-st.
Bourne, S.,	Harlem.
Boyce, James,	141 Henry-st.
Briggs, Christopher S.,	216 Bowery.
Bright, Edward,	39 Park-row.
Brooks, Elbridge G.,	274 W. Twenty-fifth-st.
Baldwin, Theron,	42 Bible House.
Bell, Goodloe B.,	19 Boorman-pl.
Burtsell, Richard L.,	145 Eighth-st.
Brandstetter, Frederich,	173 Third-st.
Brown, Abbott,	158 E. Fiftieth-st.
Brown, Frederick,	12 Forsyth-st.
Brown, Harvey,	121 Nassau-st.
Brown, Nathan,	37 Park-row.
Brown, Nehemiah,	106 W. Thirty-second-st.
Brown, Stephen D.,	47 Morton-st.
Brown, Wm. Percy,	131 E. Thirty-first-st.
Buck, James F.,	125th-st., near Second-av.
Buckbee, Charles A.,	350 Broome-st.
Buckland, R. J. W.,	262 W. Twenty-first-st.
Burchard, Samuel D.,	45 Seventh-av.
Brash, John,	202 W. Twentieth-st.

Brady, Edward, -----	11 Ridge-st.
Brennen, James C.,-----	23 Oliver-st.
Brewer, Urban C., -----	25 W. Thirty-first-st.
Busche, John F., -----	108 Rivington-st.
Campbell, Alfred E., -----	156 Chambers-st.
Campbell, Guion, -----	435 W. Forty-fourth-st.
Campbell, James K.,-----	217 Tenth-st.
Carder, James D.,-----	17 Bible House.
Carlton, Thomas, -----	200 Mulberry-st.
Cary, John, -----	97 W. Thirty-third-st.
Chambers, Talbot W.,-----	70 W. Thirty-sixth-st.
Chapin, Edwin H.,-----	14 E. Thirty-third-st.
Chauncey, Peter S.,-----	29 W. Thirty-sixth-st.
Cheever, George B.,-----	29 Irving-pl.
Church, Pharellus,-----	39 Park-row.
Clapp, Caleb,-----	225 Sixth-st.
Clark, William H., -----	160 W. Twenty-ninth-st.
Clarke, George,-----	Seventh-av., c. Twenty-sixth.
Clarkson, A. V.,-----	54 Wall-st.
Clift, William, -----	52 East Twenty-sixth-st.
Cleghorn, Adam, -----	Hammond-st., cor. Fourth.
Clowry, William H., -----	668 Second-av.
Coe, David B., -----	14 Bible House.
Compton, T. S., -----	Harlem.
Conant, Thomas J.,-----	350 Broome-st.
Cookson, F. M.,-----	7 Church-st.
Cooke, Samuel,-----	60 W. Eleventh-st.
Cohen, Marx,-----	25 Market-st.
Corbit, William P.,-----	168 E. Seventeenth-st.
Corey, Sidney A., -----	222 E. Thirty-seventh-st.
Corneille, S. J., -----	39 Gouverneur-st.
Cornwall, Nathaniel E.,-----	508 Seventh-av.
Covell, Lemuel, -----	45 Bond-st.
Cowley, Edward, -----	Blackwell's Island.
Cox, Samuel H.,-----	28 W. Twenty-ninth-st.
Craighead, James G.,-----	5 Beekman-st.
Crawford, Morris D. C.,-----	237 W. Nineteenth-st.
Crooks, George R., -----	114 Nassau-st.
Crosby, Howard, -----	306 Second-av.
Clapp, A. H., -----	16 Bible House.
Collins, William F., -----	280 Second-st.
Curran, Michael, -----	31 City-hall-pl.

Curry, T. M.,	11 Jane-st.
Curry, Daniel,	200 Mulberry-st.
Curry, Samuel,	4 Lamartine-pl.
Daly, John B.,	30 Mott-st.
Dantner, Augustine,	127 W. Thirtieth-st.
Darling, Charles C.,	9 W. Forty-seventh-st.
David, Abraham F.,	156 Attorney-st.
Davis, Samuel R.,	2 Neilson-pl.
Dawson, T. M.,	397 Grand-st.
Dearborn, S. S.,	318 W. Twentieth-st.
De Costa, B. F.,	6 E. Thirty-fifth-st.
Deluynes, Charles,	49 W. Fifteenth-st.
Denison, Samuel D.,	19 Bible House.
Depuy, William H.,	200 Mulberry-st.
Deshler, George,	Ninth-av., cor. Fifty-ninth-st.
Dewitt, Thomas,	123 Ninth-st.
Dickinson, Richard W.,	Fort Washington.
Dix, Morgan,	7 Church-st.
Dixon, Breckon,	316 E. Thirty-first-st.
Donelly, Arthur J.,	261 W. Thirty-first-st.
Dowdney, John,	762 Broadway.
Dowling, John,	6 Ashland-pl.
Draper, George B.,	Harlem.
Drees, George W.,	99 W. Forty-first-st.
Driscoll, Michael,	49 W. Fifteenth-st.
Dubois, George,	19 W. Thirty-eighth-st.
Dubois, James,	211 Sixth-st.
Duffie, Cornelius R.,	233 Lexington-av.
Dunn, James B.,	186 W. Nineteenth-st.
Dunham, S. F.,	39 W. Sixteenth-st.
Durbin, John P.,	43 W. Twenty-fourth-st.
Duryea, Joseph T.,	99 E. Twenty-seventh-st.
Dutton, Ormund H.,	120 E. Twenty-first-st.
Dutton, O. H.,	Trinity church.
Dyer, Heman,	3 Bible House.
Dymond, William,	110 E. Eighteenth-st.
Duranquet, Henry,	49 W. Fifteenth-st.
Dwight, Benjamin W.,	1144 Broadway.
Eastman, Ornan,	150 Nassau-st.
Eastman, William R.,	5 Lamartine-pl.
Eaton, Theodore A.,	106 W. Thirteenth-st.
Eigenbrodt, William E.,	101 W. Thirteenth-st.

Ehrhart, Julius, -----	Harlem.
Elmendorf, John J., -----	98 W. Thirty-seventh-st.
Ely, Foster, -----	33 Ninth-st.
Erdman, M. A., -----	192 Seventh-st.
Erskine, William J., -----	444 E. Houston-st.
Evans, W. H., -----	229 E. Fifty-third-st.
Everett, William, -----	44 Second-av.
Ewer, Ferdinand C., -----	137 W. Forty-second-st.
Ezray, G. C., -----	137 W. Fifty-third-st.
Fackler, David M., -----	216 W. Twenty-fifth-st.
Farley, Felix, -----	23 Oliver-st.
Farmer, S. S., -----	Market-st., cor. Henry.
Farrel, Peter, -----	11 Ridge-st.
Farrell, C. A., -----	243 E. Fourteenth-st.
Farrell, Thomas, -----	40 W. Washington-pl.
Ferris, Isaac, -----	80 E. Twelfth-st.
Ferris, John M., -----	103 Fulton-st.
Field, Henry M., -----	5 Beekman-st.
Findley, W. A., -----	33 E. Eleventh-st.
Fitch, Augustus S. S., -----	E. Twenty-first-st.
Flagg, Edward O., -----	67 W. Thirty-fifth-st.
Fliehr, Charles B., -----	108 W. Twenty-fourth-st.
Foehlinger, Frederick W., -----	303 Ninth-st.
Foersch, John A., -----	67 Stanton-st.
Foote, George W., -----	141 Avenue A.
Forbes, John M., -----	7 Fifth-av.
Ford, Calvin B., -----	915 Second-av.
Foss, A. C., -----	203 W. Thirtieth-st.
Foss, Cyrus D., -----	289 Fourth-av.
Foster, Randolph S., -----	191 W. Eighteenth-st.
Foster, Elon, -----	14 Bible House.
Frank, David, -----	156 Attorney-st.
Friedel, Henry A., -----	127 Norfolk-st.
Frissell, A. C., -----	13 Bible House.
Frothingham, O. B., -----	50 W. Thirty-sixth-st.
Fuller, E. K., -----	117 Henry-st.
Gallagher, Joseph S., -----	9 University-pl.
Gallaudet, Thomas, -----	9 W. Eighteenth-st.
Gambosville, Louis, -----	86 E. Twenty-ninth-st.
Ganse, Hervev D., -----	358 W. Twenty-second-st.
Gayer, Charles, -----	303 W. Forty-fifth-st.
Geer, George J., -----	229 W. Twenty-seventh-st.

Geissenhainer, Frederick W.,	76 E. Fourteenth-st.
Geyer, Julius W.,	215 Forsyth-st.
Gillett, Ezra H.,	Harlem.
Gobel, James C.,	154 W. Thirty-sixth-st.
Gorse, John E.,	117 E. Eighty-sixth-st.
Goss, Charles C.,	15 Reade-st.
Graves, Horatio,	194 E. Forty-first-st.
Groesbeeck, David,	39 Barrow-st.
Grimm, Eugene,	173 Third-st.
Grigg, John,	E. 126th-st., near Third-av.
Griswold, E. A.,	3 Bleecker-st.
Haight, Benjamin L.,	7 Church-st.
Hall, Samuel H.,	80 Wall-st.
Hallock, William A.,	150 Nassau-st.
Hardenbergh, James B.,	13 E. Forty-ninth-st.
Hare, George S.,	46 Seventh-av.
Harper, James,	70 Jane-st.
Harris, Charles E.,	155 Clinton-st.
Harris, Thomas R.,	141 Avenue A.
Harris, William L.,	200 Mulberry-st.
Hartley, Isaac S.,	14 W. Ninth-st.
Hastings, Thomas S.,	84 W. Forty-fifth-st.
Hatfield, Edwin F.,	149 W. Thirty-fourth-st.
Hatt, George,	230 E. Thirty-second-st.
Hawkins, Williams G.,	76 John-st.
Hayter, Richard,	444 W. Thirty-fourth-st.
Healy, Gabriel A.,	15 Barclay-st.
Hecker, Isaac T.,	Ninth-av., cor. Fifty-ninth-st.
Hedstrom, Olof G.,	Pier 11 North River.
Held, August H. M.,	59 Grove-st.
Helland, Ola,	Pier 11 North River.
Henderson, Isaac J.,	23 Ninth-st.
Hennicke, Christian,	123 E. Fiftieth-st.
Hervey, George W.,	466 W. Thirty-fourth-st.
Hewitt, Augustin S.,	Ninth-av., cor. Fifty-ninth-st.
Higbee, Charles,	64 E. Twenty-first-st.
Higbee, Edward Y.,	42 E. Thirtieth-st.
Hildreth, Thompson F.,	263 W. Thirty-fourth-st.
Hilliard, S. H.,	304 Mulberry-st.
Hillman, Samuel T.,	202 Second-av.
Hitchcock, Edward W.,	96 E. Fifteenth-st.
Hitchcock, Roswell D.,	9 Union-pl.

Hoffman, Herman, -----	18 Avenue D.
Hart, A. Bloomer, -----	762 Broadway.
Hodge, J. L., -----	Oliver-st., cor. Henry.
Holdich, Joseph, -----	9 Bible House.
Holden, Robert, -----	451 Eighth-av.
Hollenbeck, Garret, -----	214 Henry-st.
Hollis, George, -----	225 Chrystie-st.
Holme, John S., -----	Third-av., c. Fifty-second-st.
Homer, Charles W., -----	37 Bible House.
Hopkins, John Henry, Jr., -----	78 Cedar-st.
Horton, Richard, -----	1929 Third-av.
Houghton, George H., -----	1 E. Twenty-ninth-st.
Howland, Robert S., -----	409 W. Twenty-third-st.
Hoyt, Ralph, -----	Fifty-fourth-st., n. Second-av.
Hudson, Henry, -----	49 W. Fifteenth-st.
Hughes, T. W., -----	37 New Bowery.
Hull, Joseph D., -----	683 Sixth-av.
Huntington, B. S., -----	303 E. Thirtieth-st.
Hutton, Marcius S., -----	115 Ninth-st.
Inskip, John S., -----	57 Greene-st.
Irving, David, -----	23 Centre st.
Irving, Theodore, -----	108 E. Twenty-fourth-st.
Isaacs, Samuel M., -----	145 W. Forty-sixth-st.
Janes, Edmund S., -----	107 E. Twenty-fourth-st.
Jaggar, Thomas A., -----	13 W. Forty-sixth-st.
Jocelyn, Simeon S., -----	61 John-st.
Johnson, Samuel R., -----	Twentieth-st., n. Ninth-av.
Jones, Jonathan I., -----	308 Ninth-av.
Joslin, Titus, -----	22 E. Twentieth-st.
Kellogg, Alfred H., -----	105 Tenth-st.
Kendrick, John R., -----	111 E. Seventeenth-st.
Kennedy, Crammond, -----	22 Bible House.
Kessler, Anthony, -----	W. 125th-st., n. Ninth-av.
Keeler, S. C., -----	432 E. Fifty-first-st.
Kelsey, Charles, -----	5 Willett-st.
Kendall, Henry, -----	150 Nassau-st.
Kittredge, Abbott E., -----	15 W. Twenty-fourth-st.
Koerner, Frederick, -----	303 Ninth-st.
Knapp, Halsey W., -----	357 W. Thirty-fourth-st.
Knapp, Samuel S., -----	147 W. Twenty-fifth-st.
Kramer, Julius S., -----	174 W. Thirty-third-st.
Krebesz, Felicien, -----	112 First-st.

Krebs, John M.,	-----88 E. Thirty-ninth-st.
Kummer, Joseph H.,	-----Fourth-av., c. E. Twenty-third.
Lafont, Annet,	-----90 W. Twenty-fourth-st.
Lancaster, Daniel,	-----192 W. Thirtieth-st.
Larkin, John,	-----261 W. Thirty-first-st.
Lasker, Raphael,	-----202 East Broadway.
Lasker, Abraham,	-----171 W. Thirty-seventh-st.
Lathrop, Calvin,	-----223 W. Forty-sixth-st.
La Tourrette, James,	-----114 John-st.
Lawrence, Francis E.,	-----239 W. Twentieth-st.
Leavitt, Joshua,	-----5 Beekman-st.
Lee, Day K.,	-----23 Perry-st.
Leggett, John H.,	-----122 Leroy-st.
Leimgruber, Max,	-----173 Third-st.
Leo, Ansel,	-----208 Thompson-st.
Leonard, Alexander S.,	-----81 W. Seventeenth-st.
Lestrade, Joseph P.,	-----13 Rutgers-pl.
Liggins, John,	-----72 E. Fourteenth-st.
Little, Charles S.,	-----3 Bible House.
Lively, William M.,	-----130 W. Thirty-first-st.
Lindner, Jacob D.,	-----142 E. Twenty-eighth-st.
Lisner, Selig,	-----341 Canal-st.
Loomis, Harmon,	-----80 Wall-st.
Lord, Jeremiah S.,	-----Harlem.
Love, John,	-----74 West Broadway.
Lewis, Robert W.,	-----62 Pike-st.
Lowrie, John C.,	-----23 Centre-st.
Loyzance, Joseph,	-----49 W. Fifteenth-st.
Lucas, Elijah,	-----Harlem.
Ludlum, William S.,	-----309 W. Thirty-fifth-st.
Lundy, Francis J.,	-----175 Bleecker-st.
Lyons, Jacques J.,	-----77 Seventh-av.
McAleer, Michael,	-----343 W. Twenty-fifth-st.
McAvoy, John,	-----Madison-av., c. E. Fiftieth-st.
McCarron, Michael,	-----11 Ridge-st.
McCarthy, Patrick,	-----329 W. Forty-second-st.
McCloskey, George,	-----44 Second-av.
McCloskey, John,	-----198 Madison-av.
McCulloch, John S.,	-----1989 Third-av.
McElroy, Joseph,	-----118 W. Twelfth-st.
McEvoy, J.,	-----86 E. Twenty-ninth-st.
McGean, James H.,	-----263 Mulberry-st.

McAlister, William,	229 E. Thirty-seventh-st.
McGlynn, Edward,	86 E. Twenty-ninth-st.
McKenna, Lawrence,	31 City-hall-pl.
McKenna, Michael,	11 Ridge-st.
McKown, J. L. G.,	E. 127th-st., near Second-av.
McLeod, John N.,	241 W. Eighteenth-st.
McCurdy, Robert,	32 Bond-st.
McNiery, Francis,	198 Madison-av.
McSweeney, P. F.,	263 Mulberry-st.
McVickar, John,	21 W. Thirty-second-st.
Mack, Enoch,	Post-office, Station L.
Maguire, Eugene,	263 Mulberry-st.
Maguire, Patrick,	243 E. Fourteenth-st.
Mahan, Milo,	Twentieth-st., near Ninth-av.
Marks, David L.,	16 Van Nest-pl.
Marquardt, J. G.,	285 Hudson-st.
Marsden, Thomas,	44 Fifth-st.
Marsh, John,	5 Beekman-st.
Martin, Benjamin N.,	236 W. Fourth-st.
Massarde, Philip,	15 Wooster-st.
Meacham, John H.,	593 Hudson-st.
Mead, Darius,	5 Beekman-st.
Meilziner, Moses,	22 Jefferson-st.
Meyers, Christian,	347 W. Fifty-fourth-st.
Mignard, Paul,	49 W. Fifteenth-st.
Mikels, William S.,	174 W. Seventeenth-st.
Milburn, William H.,	163 W. Twenty-first-st.
Millett, James,	109 Second-av.
Milligan, J. C. K.,	252 W. Twenty-eighth-st.
Mills, Thornton A.,	150 Nassau-st.
Mingins, George J.,	30 Bible House.
Mitchell, David,	196 Ninth-av.
Mitchell, John S.,	Second-av., near Fifty-first-st.
Montgomery, Henry E.,	115 E. Thirtieth-st.
Mooney, Thomas,	119 Avenue B.
Morgan, Brockhalst,	209 E. Sixteenth-st.
Morgan, James H.,	35 Gramercy-pl.
Morgan, John,	762 Broadway.
Morgan, William F.,	Astoria.
Morrill, C. W.,	99 E. Forty-ninth-st.
Morris, William,	51 W. Twenty-sixth-st.
Morrough, William P.,	243 E. Fourteenth-st.

Mousseau des Islets,-----	9 University-pl.
Mowbray, William,-----	164 Allen-st.
Moskowitz, Benjamin,-----	162 Greene-st.
Muhlenberg, William A.,-----	Fifty-fourth-st., n. Fifth-av.
Murphy, Elijah D.,-----	72 Madison-st.
Murray, James O.,-----	258 Lexington-av.
Nagel, James,-----	173 Third-st.
Nanz, Charles,-----	3 Chambers-st.
Neistadt, Benedict,-----	173 Third-st.
Newell, William W.,-----	66 Second-av.
Newton, David F.,-----	61 John-st.
Nicot, Matthew,-----	181 E. Forty-seventh-st.
Nilan, James,-----	329 W. Forty-second-st.
Nobriga, Jerome P.,-----	40 W. Washington-pl.
Norden, Aaron,-----	346 Fifth-st.
Norton, Charles C.,-----	207 E. Eighty-second-st.
Noyes, B. M. W.,-----	231 E. Fifty-third-st.
Nutting, Josiah P.,-----	218 W. Twenty-second-st.
O'Callaghan, Cornelius F.,-----	23 Oliver-st.
Oerter, John H.,-----	143 W. Thirty-first-st.
Ogilby, Frederick,-----	Trinity Church.
Oliver, Thomas C.,-----	66 Sullivan-st.
Osgood, Howard,-----	58 W. Seventeenth-st.
Osgood, Samuel,-----	154 W. Eleventh-st.
Owen, John I.,-----	Lex'ton-av., c. Twenty-third.
Palmer, Ray,-----	49 Bible House.
Parker, Richard,-----	645 Hudson-st.
Parsons, Reuben J.,-----	40 W. Washington-pl.
Patton, Francis L.,-----	W. Eighty-fourth, c. 11th av.
Paxton, William M.,-----	49 W. Eleventh-st.
Payne, J. W.,-----	239 W. Twentieth-st.
Payson, Charles H.,-----	110 E. Thirty-eighth-st.
Payson, Edward P.,-----	108 E. Twenty-fourth-st.
Pehrsson, Gustavus A.,-----	11 Union Court.
Peirce, Bradford K.,-----	Randall's Island.
Peltz, Philip,-----	103 Fulton-st.
Pendleton, William H.,-----	149 W. Fifty-fourth-st.
Pennington, James W. C.,-----	504 W. Twenty-sixth-st.
Peters, Absalom,-----	12 W. Twenty-ninth-st.
Peters, Thomas M.,-----	Broadway cor. 101st-st.
Pfeifer, Andrew,-----	89 W. Thirty-first-st.
Phelps, C. E.,-----	Eighty-first-st., n. 11th-av.

Phillips, Hermon,	52 W. Forty-fourth-st.
Porter, Elbert S.,	103 Fulton-st.
Porter James,	200 Mulberry-st.
Potter, Alexander,	212 Grand-st.
Potter, Horatio,	38 E. Twenty-second-st.
Prentiss, George L.,	E. Thirty-fifth, n. Fourth-av.
Preston, Thomas S.,	145 Eighth-st.
Price, Joseph H.,	109 W. Twenty-second-st.
Prime, Edward D. G.,	37 Park-row.
Prime, Samuel L.,	37 Park-row.
Putney, Rufus C.,	249 W. Forty-third-st.
Quackinbush, D. M. L.,	Yorkville.
Quinn, James,	30 Mott-st.
Quinn, William,	15 Barclay-st.
Quennell, R. G.,	20 Hammond-st.
Ragener, Herman,	101 Seventh-st.
Rand, William W.,	150 Nassau-st.
Raphal, Morris J.,	46 W. Washington-pl.
Ray, Charles B.,	789 Sixth-av.
Reed, Sylvanus,	Thirty-eighth, c. Fourth-av.
Reinke, A. A.,	41 W. Twenty-third-st.
Renz, Carl J.,	E. Eighty-sixth-st., n. Av. A.
Rhodes, Christopher,	84 First-st.
Richardson, Nathaniel S.,	37 Bible House.
Richmond, John F.,	454 W. Forty-fourth-st.
Ridgaway, Henry B.,	80 Macdougall-st.
Rinacker, Amadeus A.,	41 W. Twenty-third-st.
Rising, F. S.,	3 Bible House.
Roberts, William,	204 E. Sixteenth-st.
Robertson, D. F.,	157 Broadway.
Roe, Alfred C.,	229 Thompson-st.
Rogers, Ebenezer P.,	40 W. Twenty-seventh-st.
Rosing, Johannes,	20 W. Sixteenth-st.
Rowell, Morse,	313 Sixth-av.
Rubin, Adolphus,	149 E. Sixty-fifth-st.
Rush, Christopher,	68 Grove-st.
Sabine, William T.,	46 W. Twenty-third-st.
Sanderson, Joseph,	136 E. Forty-sixth-st.
Sandford, Aaron K.,	329 W. Twentieth-st.
Sarner, Ferdinand,	202 E. Thirty-sixth-st.
Sawyer, Thomas J.,	121 Nassau-st.
Schaff, Philip,	5 Bible House.

Schaffer, Henry M.,	-----
Scheibel, Gottfried,	-----48 Allen-st.
Schmidt, Henry J.,	-----94 W. Forty-third-st.
Schramm, Carl,	-----91 Second-st.
Scott, William A.,	-----208 W. Forty-second-st.
Scott, Uriah,	-----48 W. Fourteenth-st.
Scudder, Joseph,	-----156 Chambers-st.
Seabury, Samuel,	-----Twentieth-st., n. Ninth-av.
Seaman, Samuel A.,	-----123 E. Twenty-seventh-st.
Searle, Zetus,	-----163 E. Thirty-second-st.
See, Isaac M.,	-----151 E. Fiftieth-st.
See, John L.,	-----103 Fulton-st.
Scelegsohn, A.,	-----75 Ludlow-st.
Seidel, Julius,	-----Pier 11 North river.
Serenbez, F. M.,	-----Harlem.
Seymour, George F.,	-----Twentieth-st., n. Ninth-av.
Seymour, William W.,	-----Second-av., cor. E. 124th-st.
Seymour, Ebenezer,	-----52 Beekman-st.
Seymour, Erastus,	-----64 Avenue D.
Shackelford, John W.,	-----E. Eightieth-st., n. Second-av.
Shaffer, James N.,	-----61 Park-st.
Shimeall, Richard C.,	-----371 W. Thirty-fifth-st.
Shanahan, John,	-----15 Barclay-st.
Shedd, William G. T.,	-----106 E. Thirty-eighth-st.
Sherwood, James M.,	-----5 Beekman-st.
Silberborg, Abram,	-----100 Columbia-st.
Sill, Thomas H.,	-----15 W. Twenty-fifth-st.
Sill, Frederick,	-----25 Vandam-st.
Sing, Charles B.,	-----219 E. Twenty-seventh-st.
Souder, Edward,	-----108 W. Twenty-fourth-st.
Skinner, Thomas H.,	-----160 W. Twenty-third-st.
Sloane, James R. W.,	-----273 W. Twenty-second-st.
Smith, Edward D.,	-----453 W. Twenty-first-st.
Smith, Henry B.,	-----9 University-pl.
Smith, J. Howard,	-----Washington Heights.
Smith, James T.,	-----17 W. Eighteenth-st.
Smith, John B.,	-----10 Bible House.
Smith, John Cotton,	-----7 West Tenth-st.
Smith, Thomas B.,	-----570 Broome-st.
Smith, T. Ralston,	-----8 Bible House.
Sommers, Charles G.,	-----17 St. Mark's-pl.
Southgate, Horatio,	-----35 E. Thirty-seventh-st.

Spaulding, John, -----	208 W. Twenty-eighth-st.
Spelman, William, -----	70 Grove-st.
Spencer, Jesse A., -----	32 Hammond-st.
Stoddard, Charles A., -----	37 Park-row.
Spring, Gardiner, -----	6 E. Thirty-seventh-st.
Starrs, William, -----	263 Mulberry-st.
Staunton, William, -----	762 Broadway.
Steins, Frederick, -----	259 Henry-st.
Stephenson, C. S., -----	220 E. Nineteenth-st.
Sternberger, Leon, -----	198 East Broadway.
Stevens, Abel, -----	200 Mulberry-st.
Stevenson, John M., -----	150 Nassau-st.
Stevenson, Andrew, -----	341 W. Twelfth-st.
Steward, Ira R., -----	26 Rutgers-st.
Stewart, George W., -----	16 South William-st.
Stirling, Walter A., -----	58 Rutgers-st.
Stocking, S. S., -----	341 Fifth-av.
Stohlman, Charles F. E., -----	167 Mott-st.
Street, Thomas, -----	9 Lamartine-pl.
Strieby, Michael E., -----	61 John-st.
Stroehle, Benedict, -----	251 W. Forty-ninth-st.
Stryker, Peter, -----	205 W. Thirty-first-st.
Sutphen, Morris C., -----	177 Seventh-av.
Talmage, Goyn, -----	103 Fulton-st.
Tanner, Adam, -----	112 First-st.
Taylor, Thomas H., -----	804 Broadway.
Taylor, William J. R., -----	7 Bible House.
Teixeira, Dominick J., -----	261 W. Thirty-first-st.
Terry, David, -----	199 Mulberry-st.
Thompson, Alexander R., -----	219 W. Twenty-first-st.
Thompson, George L., -----	123 E. Twenty-seventh-st.
Thompson, James, -----	177 W. Twentieth-st.
Thompson, Joseph P., -----	32 W. Thirty-sixth-st.
Thomson, John, -----	116 W. Thirty-seventh-st.
Thomson, Edward, -----	200 Mulberry-st.
Thomason, Denny R., -----	175 E. Seventeenth-st.
Thiry, Theodore, -----	49 W. Fifteenth-st.
Tibbals, Nathan, -----	37 Park-row.
Tillotson, Robert B., -----	Ninth-av., c. Fifty-ninth-st.
Toelke, Henry, -----	43 Second-av.
Travis, Robert, -----	106 Hammond-st.
Treanor, Thomas, -----	30 Mott-st.

Trimble, S. W.,	-----13 W. Forty-first-st.
Tris, Abraham C.,	-----632 Hudson-st.
Tuttle, Isaac H.,	-----477 Hudson-st.
Twing, Albert T.,	-----17 Bible House.
Tyng, James H.,	-----184 W. Twenty-fourth-st.
Tyng, Stephen H.,	-----209 E. Sixteenth-st.
Tyng, Stephen H., Jr.,	-----117 W. Forty-third-st.
Urban, Anthon,	-----173 Third-st.
Van Aken, Enoch,	-----207 W. Twenty-seventh-st.
Van Boskerck, John L.,	-----632 Hudson-st.
Vanhouten, Abraham,	-----13 Bethune-st.
Van Kleeck, Robert B.,	-----234 W. Twentieth-st.
Van Meter, William C.,	-----40 New Bowery.
Van Norman, Daniel C.,	-----3 W. Thirty-eighth-st.
Vermilye, Thomas E.,	-----50 E. Forty-ninth-st.
Verren, Antoine,	-----28 W. Twenty-second-st.
Vincent, J. H.,	-----200 Mulberry-st.
Vinton, Alexander H.,	-----156 Second-av.
Vinton, Francis,	-----Trinity Church.
Walker, R. J.,	-----338 Pearl-st.
Walker, W. D.,	-----82 E. Twenty-third-st.
Walsh, Thomas,	-----150 W. Thirty-first-st.
Ward, Caleb T.,	-----329 E. Twelfth-st.
Ward, Henry D.,	-----61 W. Twenty-seventh-st.
Wardlaw, William,	-----52 W. Fourteenth-st.
Washburn, Edward A.,	-----64 E. Twenty-first-st.
Wasserman, Henry,	-----169 Rivington-st.
Wedekind, Augustus C.,	-----154 E. Nineteenth-st.
Weed, Levi T.,	-----128 Allen-st.
Wellman, Merritt H.,	-----316 E. Thirtieth-st.
Wertheimer, Samuel W.,	-----274 Rivington-st.
Westcott, Isaac,	-----200 W. Forty-second-st.
Weston, Henry G.,	-----683 Lexington-av.
Weston, Sullivan H.,	-----63 London terrace.
Whedon, Daniel D.,	-----200 Mulberry-st.
Whipple, George,	-----61 John-st.
White, John C.,	-----79 E. Eighteenth-st.
Whitehead, Charles,	-----64 W. Thirty-fifth-st.
Wieczorek, Rudolph,	-----59 W. Forty-first-st.
Wilds, Zenas P.,	-----286 Spring-st.
Willett, Marinus,	-----Washington Heights.
Willett, William M.,	-----297 Delancey-st.

Williams, William W.,-----	599 Broadway.
Williams, William R.,-----	27 Grove-st.
Willis, Samuel B.,-----	152 Clinton-st.
Wiggins, Ebenezer,-----	408 Fifth-st.
Wilson, R. Z.,-----	87 Perry-st.
Wilson, Henry M.,-----	66 Sullivan-st.
Wilson, James D.,-----	137 W. Thirteenth-st.
Wines, Enoch C.,-----	38 Bible House.
Winslow, William C.,-----	117 Clinton-pl.
Wise, Daniel,-----	200 Mulberry-st.
Wiswall, Alvah,-----	430 W. Twenty-third-st.
Wood, George W.,-----	4 Bible House.
Woodruff, George W.,-----	22 Seventh-st.
Wormser, Abraham,-----	391 East Houston-st.
Wright, William D.,-----	350 Broome-st.
Wyckoff, William H.,-----	350 Broome-st.
Young, Alfred,-----	Ninth-av., c. Fifty-ninth-st.
Young, John F.,-----	30 Laight-st.

PASTORS OF CITY CHURCHES.

BAPTIST.

- Rev. John Q. Adams, 63 Morton-st. ; Antioch ch., 264 Bleecker-st.
 Rev. Thos. D. Anderson, D. D., 768 Third-avenue ; First ch., 354 Broome-st.
 Rev. Thos. Armitage, D. D., 31 W. Forty-first-st. ; Fifth-av. ch., near W. Forty-sixth-st.
 Rev. J. W. R. Buckland, 50 W. Twenty-third-st. ; Calvary ch., 50 W. Twenty-third-st.
 Rev. Sidney A. Corey, 222 E. Thirty-seventh-st. ; Lexington-av. ch., near E. Thirty-seventh-st.
 Rev. James Dubois, Sixth-st. ch., 211 Sixth-st.
 Rev. John Dowling, D. D., 6 Ashland-pl. ; Berean ch., 35 Downing-st.
 Rev. H. M. Schaffer ; First German ch.
 Rev. E. K. Fuller, 117 Henry-st. ; Cannon-st. ch., 317 Madison-st.
 Rev. Chas. Gayer, 303 W. Forty-fifth-st. ; Bethlehem ch., 395 W. Forty-fifth-st.
 Rev. James C. Gobel, Ebenezer ch., 154 W. Thirty-sixth-st.
 Rev. J. L. Hodge, D. D., First Mariners' ch., Oliver-st., cor. Henry.
 Rev. J. S. Holme, D. D. ; Third-av. and Fifty-second-st.
 Rev. S. J. Knapp, South ch., 147 W. Twenty-fifth-st.
 Rev. J. R. Kendrick, D. D., Tabernacle ch., 162 Second-av.
 Rev. Elijah Lucas, Harlem ; Fifth-av. ch., near 126th-st.
 Rev. W. S. Mikels, D. D., 174 W. Seventeenth-st. ; Sixteenth-st. ch., 257 W. Sixteenth-st.
 Rev. A. Cleghorn, — ; North ch., 126 Christopher-st.
 Rev. C. C. Norton, Eighty-second-st., near Third-av. ; Yorkville ch., Eighty-third-st., near Second-av.
 Rev. —, Laight-st. ch., cor. Varick.
 Rev. W. H. Pendleton, Bethesda ch., Fifty-third-st., n. Seventh-av.
 Rev. J. P. Nutting, Freewill ch., 74 W. Seventeenth-st.
 Rev. J. T. Raymond, (col'd,) Zion ch., (col'd.)
 Rev. W. Spelman, (col'd,) 70 Grove-st. ; Abyssinian ch., (col'd,) 166 Waverley-pl.
 Bloomingdale ch., 220 W. Forty-second-st.
 Rev. Henry G. Weston, D. D., 683 Lexington-av. ; Madison-av. ch., cor. E. Thirty-first-st.

- Rev. Wm. R. Williams, D. D., Amity-st. ch., W. Fifty-fourth-st., near Eighth-av.
- Rev. Wm. Reid, Macdougall-st. ch., 24 Macdougall-st.
- Rev. C. Rhodes, 84 First-st. ; Stanton-st. ch., 36 Stanton-st.
- Rev. —, Welsh ch., 141 Chrystie-st.
- Rev. Halsey W. Knapp, Pilgrim ch., Thirty-third-st., n. Eighth-av.
 First Baptist Church Mission, 359 Broome-st.
 Tabernacle Baptist Mission, 189 E. Twentieth-st.
 Sixteenth-st. Baptist Mission, Ninth-av., near Twelfth-st.
 Madison-av. Mission.
 Hope Mission, 435 E. Houston-st.
 German Mission, 312 W. Thirty-ninth-st.
 Tabernacle Mission, First-av., cor. Ninth-st.
 German Mission, Sixth-av., cor. Thirty-ninth-st.
 German Salem Baptist.

CONGREGATIONAL.

- Rev. Geo. B. Cheever, D. D., 29 Irving-pl. ; ch. of the Puritans.
- Rev. Evan Griffiths, 171 Eighth-av. ; Welsh ch., 33 E. Eleventh-st.
- Rev. C. B. Ray, (col'd,) 81 W. Thirty-eighth-st. ; Bethesda ch., (col'd,) 681 Sixth-av.
- Rev. J. P. Thompson, D. D., 32 W. Thirty-sixth-st. ; Tabernacle ch., Sixth-av., cor. Thirty-fourth-st.
- Rev. Lyman Abbott, 203 W. Thirty-fourth-st. ; New England ch., 10 W. Forty-first-st.
- Rev. S. A. Baker, — ; ch. of the Pilgrims, 235 W. Forty-eighth-st.
 Tabernacle Mission, 235 W. Forty-eighth-st.
- Rev. S. Bourne, — ; Harlem Congregational ch., Second-av., cor. 125th-st.

REFORMED DUTCH.

- Rev. Talbot W. Chambers, D. D., 70 W. Thirty-sixth-st. ; Collegiate ch., Forty-eighth-st., near Fifth-av.
- Rev. Thomas De Witt, D. D., 123 Ninth-st. ; Collegiate ch., Fifth-av., cor. Twenty-ninth-st.
- Rev. Joseph T. Duryea, 99 E. Twenty-seventh-st. ; Collegiate ch., Lafayette-pl.
- Rev. Henry A. Friedel, 127 Norfolk-st. ; German Reformed ch., 129 Norfolk-st.
- Rev. Hervey D. Ganse, 358 W. Twenty-second-st. ; Northwest ch., 145 W. Twenty-third-st.

- Rev. Julius W. Geyer, 215 Forsyth-st.; Ger. Evangelical ch., 141 E. Houston-st.
- Rev. Isaac S. Hartley, 14 W. Ninth-st.; Union ch., 25 Sixth-av.
- Rev. M. S. Hutton, D. D., 115 Ninth-st.; Washington-sq. ch., Wooster-st.
- Rev. J. S. Lord, D. D., 122d-st.; Harlem ch., Third-av., cor. 121st-st.
- Rev. J. H. Oerter, 143 W. Thirty-first-st.; Fourth German ch., 112 W. Twenty-ninth-st.
- Rev. D. M. L. Quackinbush, D. D., Eighty-sixth-st., near Third-av.; Prospect-hill ch., Eighty-fifth-st., near Second-av.
- Rev. E. P. Rogers, D. D., 40 W. Twenty-seventh-st.; South ch., Fifth-av., cor. Twenty-first-st.
- Rev. Peter Stryker, D. D., 205 W. Thirty-first st.; Thirty-fourth-st. ch., near Eighth-av.
- Rev. Alexander R. Thompson, D. D., 219 W. Twenty-first-st.; Twenty-first-st. ch., 47 W. Twenty-first-st.
- Rev. Enoch Van Aken, 207 W. Twenty-seventh-st.; Bloomingdale ch., Broadway, cor. Sixty-eighth-st.
- Rev. Thomas E. Vermilye, 50 E. Forty-ninth-st.; Collegiate ch., Fulton-st., cor. William.
- Rev. Henry V. Voorhees, 10 Carman-pl.; Washington Heights ch.
- Rev. Ebenezer Wiggins, D. D., 408 Fifth-st.; Manhattan ch., 71 Av. B.
- Rev. W. H. Clark, Collegiate Mission, 160 W. Twenty-ninth-st.
- Greenwich Reformed Dutch.
- Market-st. Reformed Dutch.
- Collegiate Mission, Ninth-av. near Thirty-ninth-st.
- Collegiate Mission, Seventh-av., near Fifty-fifth-st.
- Collegiate Mission, Fulton-st., cor. William.
- Mount Pleasant Reformed Dutch.
- South Church Mission, Ninth-av., cor. Twenty-fifth-st.
- Northwest Mission, 104 W. Twenty-fourth-st.
- Thirty-fourth-st. Mission.

FRIENDS.

- E. Fifteenth-st., cor. Rutherford-pl.; W. Barry, janitor, at ch.
- Twentieth-st., E. Twentieth-st., near Third-av.; R. Ritchie, janitor, 106 E. Twenty-second-st.
- Twenty-seventh-st., 43 W. Twenty-seventh-st.; J. W. Onderdonk, janitor, 1252 Broadway.

Mission, Thirty-eighth-st., near Second-av.

Mission, W. Thirtieth-st., near Sixth-av.

JEWISH.

Adaareth El, 83 E. Twenty-ninth-st.

Ahovath Chesed, Av. C, cor. E. Fourth-st.

Anshi Bikur Cholim, Ridge-st., cor. E. Houston.

Anshi Chesed, 146 Norfolk-st.

Beth Cholim, 138 W. Twenty-eighth-st.

Beth Joseph, 22 Catharine-st.

Beth El, 176 W. Thirty-third-st.

Beth Hamidrash, 78 Allen-st.

Beth Hamidrash 2d, 157 Chatham-st.

Beth Israel Bikur Cholim, 56 Chrystie-st.

Bikur Cholim U-Kadischor, 63 Chrystie-st.

Bnai Israel, 41 Stanton-st.

Bnai Jeshurun, 145 W. Thirty-fourth-st.

Bnai Cholim, 127½ Columbia-st.

Darech Amuno, 164 Greene-st.

Mischkan Israel, Allen-st., cor. Grand.

Poel Zedeck, W. Twenty-ninth-st., cor. Eighth-av.

Rodeph Shalom, 8 Clinton-st.

Sharai Berocho, 35 Sixth-st.

Shaari Roch Mim, 156 Attorney-st.

Shaari Tephila, 1306 Broadway.

Shaari Zedeck, 38 Henry-st.

Shaaer Hashamoin, 91 Rivington-st.

Shearith Israel, W. Nineteenth-st., near Fifth-av.

Temple, 84 E. Twelfth-st.

Adas Jeshurun, 135 W. Thirty-ninth-st.

Emmanuel, Forty-third-st., near Fifth-av.

Synagogue, E. Fifty-second-st., cor. Second-av.

LUTHERAN.

Rev. G. W. Drees, 99 W. Forty-first-st. ; St. Luke's ch., 208 W. Forty-third-st.

Rev. Julius Ehrhart, — ; St. Paul's ch., Harlem.

Rev. F. W. Foehlinger, 303 Ninth-st. ; Av. B ch., cor. Ninth-st.

Rev. A. H. M. Held, 59 Grove-st. ; St. John's ch., 81 Christopher-st.

Rev. F. W. Geissenhainer, D. D., 76 E. Fourteenth-st. ; St. Paul's ch., 226 Sixth-av.

Rev. C. Henicke, 123 E. Fiftieth-st. ; St. Peter's ch., 125 E. Fiftieth-st.

- Rev. H. Ragener, 101 Seventh-st. ; St. Marcus' ch., 52 Sixth-st.
 Rev. G. J. Rents, Fourth-av., near Eighty-ninth-st. ; Yorkville ch.,
 Eighty-seventh-st., near Fourth-av.
 Rev. C. F. E. Stohlman, D. D., 167 Mott-st. ; St. Matthew's ch.,
 Walker-st.
 Rev. A. C. Wedekind, 154 E. Nineteenth-st. ; St. James' ch., 103 E.
 Fifteenth-st.
 Swedish, 91 E. Twenty-second-st.
 Swedish, 52 Market-st.
 Evangelical Lutheran, W. 123d-st., near Seventh-av.

METHODIST EPISCOPAL.

- Rev. H. F. Pease and Rev. W. H. Ferris, Presiding Elders.
 Rev. W. McAlister, 229 E. Thirty-seventh-st. ; Thirty-seventh-st. ch.,
 129 E. Thirty-seventh-st.
 Rev. S. D. Brown, 47 Morton-st. ; Bedford-st. ch., 28 Morton-st.
 Rev. W. P. Corbit, 168 E. Seventeenth-st. ; Hedding ch., 170 E.
 Seventeenth-st.
 Rev. T. M. Curry, 11 Jane-st. ; Jane-st. ch., 13 Jane-st.
 Rev. J. L. Peck, 280 Second-st. ; Second-st. ch., 276 Second-st.
 Rev. F. Bottome, 915 Second-av. ; Beekman-hill ch., Fiftieth-st.,
 near Second-av.
 Rev. A. C. Foss, 203 W. Thirtieth-st. ; Thirtieth-st. ch., 207 W.
 Thirtieth-st.
 Rev. C. D. Foss, 289 Fourth-av. ; St. Paul's ch., Fourth-av., cor. E.
 Twenty-second-st.
 Rev. L. H. King, 191 W. Eighteenth-st. ; Eighteenth-st. ch., 193 W.
 Eighteenth-st.
 Rev. G. S. Hare, D. D., 46 Seventh-av. ; Central ch., 44 Seventh-av.
 Rev. J. E. Gorse, Eighty-sixth-st. ; Yorkville ch., Eighty-sixth-st.,
 near Fourth-av.
 Rev. O. G. Hedstrom, — ; Swedish Bethel, pier 11 North River.
 Rev. T. F. Hildreth, 263 W. Thirty-fourth-st. ; Trinity ch., 248 W.
 Thirty-fourth-st.
 Rev. F. Brown, 12 Forsyth-st. ; Forsyth-st. ch., 10 Forsyth-st.
 Rev. R. C. Putney, 249 W. Forty-third-st. ; Forty-third-st. ch., 177
 W. Forty-third-st.
 Rev. J. W. Horne, 5 Willett-st. ; Willett-st. ch., 7 Willett-st.
 Rev. G. C. Ezray, 137 W. Fifty-third-st. ; St. John's ch., 133 W.
 Fifty-third-st.
 Rev. G. W. Knapp, 61 Park-st. ; Mission ch., 61 Park-st.

Rev. J. L. G. McKown, 127th-st., near Third-av.; Harlem ch., 125th-st., near Third-av.

Rev. W. H. Evans, 145 E. Fiftieth-second-st.; Lexington-av. ch., cor. Fifty-second-st.

Rev. John Parker, —; Second-av. ch., cor. 119th-st.

Rev. T. B. Smith, 570 Broome-st.; Duane ch., 294 Hudson-st.

Rev. W. H. De Puy, —; John-st. ch., 44 John-st.

Rev. R. S. Foster, D. D., 80 Macdougall-st.; Washington-sq. ch., Fourth-st.

Rev. L. S. Weed, 128 Allen-st.; Allen-st. ch., 126 Allen-st.

Rev. T. W. Chadwick, 317 W. Twenty-eighth-st.; Twenty-fourth-st. ch., near Ninth-av.

Rev. C. B. Sing, 219 E. Twenty-seventh-st.; Rose Hill ch., 125 E. Twenty-seventh-st.

Rev. J. N. Shaffer, 61 Park-st.; Mission ch., 61 Park-st.

Rev. J. S. Inskip, 57 Greene-st.; Greene-st. ch., 59 Greene-st.

Rev. J. F. Richmond, —; Janes Mission, 461 W. Forty-fourth-st.

Rev. V. N. Traver; W. Harlem ch., 125th-st., near Sixth-av.

Rev. G. W. Woodruff, 22 Seventh-st.; Seventh-st. ch., 24 Seventh-st.

Rev. C. E. Harris, 155 Clinton-st.; Alanson ch., 52 Norfolk-st.

Mission, Thirty-fifth-st., near Tenth-av.

Mission, 117 Bank-st.

Mission, 199 Mulberry-st.

Mission, 21 Worth-st.

Mission, 932 Third-av.

Mission, 319 Rivington-st.

Mission, 392 Broome-st.

Mission, Sixty-first-st., near Third-av.

Mission, 283 Av. B.

Mission, 146 Av. A.

Mission, 186 Franklin-st.

Central Ch. Mission, Seventh-av., cor. Twenty-second-st.

St. Paul's Mission, Seventh-av., cor. Twenty-sixth-st.; Rev. G. Clarke.

German Church, 252 Second-st.

German Mission, 222 W. Fortieth-st.

German Mission, Greenwich-st., cor. Cortlandt.

Second-st. Mission, Av. B, cor. Third-st.

Seventh-st. Mission, Av. C, cor. Fourth-st.

AFRICAN METHODIST EPISCOPAL.

Rev. Henry Davis ; Bethel, 214 Sullivan-st.

Rev. S. Jones, 76 Sullivan-st. ; Zion ch., 331 Bleecker-st.

Rev. W. Hutchings, — ; Union ch., 161 W. Fifteenth-st.

METHODIST PROTESTANT.

Rev. W. C. Clark, 298 Delancey-st. ; First ch., 87 Attorney-st.

PRESBYTERIAN.

Rev. Wm. Adams, D. D., 8 E. Twenty-fourth-st. ; Madison-sq. ch.,
cor. E. Twenty-fourth-st.

Rev. S. D. Alexander, D. D., 90 E. Twenty-second-st. ; Fifteenth-st.
ch., near Third-av.

Rev. G. D. Archibald, D. D. ; Westminster ch., 151 W. Twenty-second.

Rev. Mousseau des Islets ; French ch., 9 University-pl.

• Rev. R. R. Booth, D. D., 77 Ninth-st. ; Mercer-st. ch., near Eighth-st.
Yorkville ch., 147 E. Eighty-sixth-st.

Rev. S. D. Burchard, D. D., 45 Seventh-av. ; Thirteenth-st. ch., near
Seventh-av.

W. Twenty-third-st., near Seventh-av.

Rev. H. Crosby, D. D., 306 Second-av. ; Fourth-av. ch., cor. Twen-
ty-second-st.

Rev. R. W. Dickinson, D. D., Mt. Washington ; Mt. Washington ch.

Rev. James B. Dunn, 186 W. Nineteenth-st. ; Central ch., W. Fifti-
eth-st., near Eighth-av.

Prince-st. ch., (col'd.) cor. Marion.

Rev. Ezra H. Gillett, D. D., Harlem ; Harlem ch.

Rev. A. H. Kellogg, 105 Tenth-st. ; University-pl. ch., near Tenth-st.

• Rev. T. S. Hastings, D. D., 84 W. Forty-fifth-st. ; West ch., Forty-
second-st., near Fifth-av.

• Rev. A. E. Kittredge, 15 W. Twenty-fourth-st. ; Eleventh ch., Fifty-
fifth-st., near Lexington-av.

Rev. P. Hopkins, (col'd.) — ; African Union (col'd) ch., 157 W.
Twenty-eighth-st.

Rev. J. M. Krebs, D. D., 88 E. Thirty-ninth-st. ; Rutgers ch., Madi-
son-av., cor. Twenty-ninth-st.

Rev. J. McElroy, D. D., 118 W. Twelfth-st. ; Scotch ch., 53 W.
Fourteenth-st.

Rev. J. O. Murray, 258 Lexington-av. ; Brick ch., Fifth-av., cor.
Thirty-seventh-st.

- Rev. Francis L. Patton, — ; Eighty-fourth-st. ch., near Bloomingdale-road.
- Rev. C. H. Payson, 110 East Thirty-eighth-st. ; Mission ch., 419 Third-av.
- Rev. G. L. Prentiss, D. D., E. Thirty-fifth-st., near Fourth-av. ; Covenant ch., Park-av., cor. Thirty-fifth-st.
- Rev. W. W. Newell, D. D., 66 Second-av. ; Allen-st. ch., 61 Allen-st.
Fifth-av. ch., cor. Nineteenth-st.
- Rev. Morse Rowell, 313 Sixth-av. ; Mission ch., 107 Seventh-av.
- Rev. Joseph Sanderson, 136 E. Forty-sixth-st. ; Lexington-av. ch., cor. E. Forty-sixth-st.
- Rev. Wm. A. Scott, D. D., 208 W. Forty-second-st. ; Forty-second-st. ch., 233 W. Forty-second-st.
- Rev. — ; Manhattanville ch., 126th-st., cor. Ninth-av.
- Rev. R. C. Shimeall, 371 W. Thirty-fifth-st. ; Mission ch., Sixth-av., cor. Forty-second-st.
- Rev. Edward D. Smith, D. D., 453 W. Twenty-first-st. ; Chelsea ch., 353 W. Forty-second-st.
- Rev. T. M. Dawson ; Seventh ch., Broome, cor. Ridge.
- Rev. Gardiner Spring, D. D., 6 E. Thirty-seventh-st. ; Brick ch., Fifth-av., cor. Thirty-seventh-st.
- Rev. Frederick Steins, 257 Henry-st. ; German ch., 290 Madison-st.
- Rev. C. A. Stoddard, Washington Heights ; Washington Heights ch.
- Rev. Thomas Street, 9 Lamartine-pl. ; North ch., Ninth-av., cor. Thirty-first-st.
- Rev. John Thomson, D. D., 116 W. Thirty-seventh-st. ; Grand-st. ch., Thirty-fourth-st., near Broadway.
- Rev. J. D. Wilson, Seventh-av., cor. Thirteenth-st. ; Spring-st. ch., 246 Spring-st.
- Rev. H. M. Wilson, (col'd,) 66 Sullivan-st. ; Covenant ch., (col'd,) 231 W. Sixteenth-st.
- Rev. Mr. Nightingale ; Canal-st. ch., 7 Greene-st.
- Rev. Wm. M. Paxton, D. D., 49 W. Eleventh-st. ; First ch., Fifth-av., cor. Eleventh-st.
- Rev. E. W. Hitchcock, 96 E. Fifteenth-st. ; Fourteenth-st. ch., cor. Second-av.
- Rev. — ; Park ch., Eighty-fifth-st., near Third-av.
- Rev. M. C. Sutphen, 177 Seventh-av. ; Scottish ch., 53 W. Fourteenth-st.
- Rev. J. E. Annan, 205 Lex'ton-av. ; Fortieth-st., near Lex'ton-av.
Church of the Sea and Land, Market-st., cor. Henry.

Rev. E. P. Payson, Fourth-av. Mission, Twenty-second-st., n. First-av.
 First German, Clinton Hall.
 Fifteenth-st. Mission, Fourteenth-st., near First-av.
 Mercer-st. Mission, 118 Av. D ; Rev. E. Seymour.
 Mercer-st. Mission, First-st., near First-av.
 Twenty-third-st. Mission, 273 W. Twenty-fifth-st.
 Fourth-av. Mission, Fifth-st., cor. First-av.
 West ch. Mission, 718 Ninth-av.
 West ch. Mission, Eighth-av., cor. Forty-fourth-st.
 Eleventh ch. Mission, Fifty-second-st., near Second-av.
 Brick ch. Mission, W. Thirty-fifth-st., near Seventh-av.
 Church of Covenant Mission, Fortieth-st., near Third-av.
 Fifth-av. ch. Mission, 107 Seventh-av.
 Fifth-av. ch. Mission, 282 W. Eighteenth-st.
 Fifth-av. ch. Mission, 9 King-st.
 North ch. Mission, Eighth-av., cor. Thirty-third-st.
 Spring-st. ch. Mission.
 First ch. Mission, 67 W. Twelfth-st.
 University-pl. Mission, 140 Sixth-av.
 Fourteenth-st. Mission, Twenty-third-st., cor. Second-av.
 Fourteenth-st. Mission, E. Twelfth-st., near Av. B.
 Seventh ch. Mission, 203 Rivington-st.
 Thirteenth-st. ch. Mission.

UNITED PRESBYTERIAN.

Rev. Hugh H. Blair, 34 Perry-st. ; Third ch., 41 Charles-st.
 Rev. John Brash, 202 W. Twentieth-st. ; Jane-st. ch., 41 Jane-st.
 Rev. G. Campbell, 435 W. Forty-fourth-st. ; Seventh ch., 434 W.
 Forty-fourth-st.
 Rev. James Harper, D. D., 70 Jane-st. ; Seventh-av. ch., 29 Sev-
 enth-av.
 Rev. W. A. Findley, — ; Eleventh-st. ch., 33 E. Eleventh-st.
 Rev. James Thompson, 177 W. Twentieth-st. ; Twenty-fifth-st. ch.,
 161 W. Twenty-fifth-st.

ASSOCIATE REFORMED PRESBYTERIAN.

Rev. W. Freeland, 155 Thompson-st. ; Fourth ch., 157 Thompson-st.

REFORMED PRESBYTERIAN.

Rev. — ; Second ch., Second-av., cor. Eleventh-st.
 Rev. J. N. McLeod, D. D., 241 W. Eighteenth-st. ; First ch., 123
 W. Twelfth-st.

Rev. J. R. W. Sloane, 273 W. Twenty-second-st. ; Third ch., 238 W. Twenty-third-st.

Rev. Andrew Stevenson, D. D., 341 W. Twelfth-st. ; Second ch., 167 W. Eleventh-st.

- Rev. J. C. K. Milligan, 186 W. Fortieth-st. ; First ch., 252 W. Twenty-eighth-st.

Second Reformed Pres. Mission, Hudson-st., cor. Christopher.

PROTESTANT EPISCOPAL.

Rev. C. C. Adams, Manhattanville ; St. Mary's ch., Manhattanville.

Rev. Alfred B. Beach, D. D., 228 W. Twentieth-st. ; St. Peter's ch., 224 W. Twentieth-st.

Rev. E. Benjamin, 59 W. Twenty-eighth-st. ; St. Ann's ch., 7 W. Eighteenth-st.

Rev. J. Boyle, 127 E. Fifty-eighth-st. ; Zion chapel, 557 Third-av.

Rev. — ; St. James' ch., E. Sixty-ninth-st. near Third-av.

Rev. Caleb Clapp, 225 Sixth-st. ; ch. of the Nativity, 70 Av. C.

Rev. Samuel Cooke, D. D., 60 W. Eleventh-st. ; St. Bartholomew's ch., Lafayette-place.

Rev. S. J. Corneille, 39 Gouverneur-st. ; All Saints' ch., 286 Henry-st.

Rev. N. E. Cornwall, D. D., 508 Seventh-av. ; St. Matthias' ch., Broadway cor. Thirty-second-st.

Rev. Uriah Scott ; Redemption ch., 98 E. Fourteenth-st.

- Rev. Morgan Dix, D. D., 50 Varick-st. ; Trinity ch., Broadway.

Rev. G. B. Draper, Harlem ; St. Andrew's ch., Harlem.

Rev. C. R. Duffie, D. D., 233 Lexington-av. ; St. John Baptist ch., 231 Lexington-av.

Rev. T. A. Eaton, 106 W. Thirteenth-st. ; St. Clement's ch., 108 Amity-st.

Rev. J. I. Elmendorf, 98 W. Thirty-seventh-st. ; Holy Innocents' ch., Sixth-av. cor. Forty-second-st.

Rev. F. C. Ewer, 137 W. Forty-second-st. ; Christ ch., Fifth-av. cor. Thirty-fifth-st.

Rev. E. O. Flagg, ; Resurrection ch.

- Rev. Thos. R. Harris ; St. Mark's Mission, 141 Av. A.

Rev. T. Gallaudet, D. D., 9 W. Eighteenth-st. ; St. Ann's ch., 7 W. Eighteenth-st.

Rev. G. J. Geer, D. D., 229 W. Twenty-seventh-st. ; St. Timothy's ch., W. Fifty-seventh-st. near Eighth-av.

Rev. B. J. Haight, D. D., 56 W. Twenty-sixth-st. ; St. Paul's ch., Broadway, cor. Vesey-st.

- Rev. A. B. Hart, 762 Broadway; Advent ch., 53 West Forty-sixth-st.
- Rev. E. Y. Higbee, D. D., 42 E. Thirtieth-st.; Trinity chapel, 15 W. Twenty-fifth-st.
- Rev. G. H. Houghton, D. D., 1 E. Twenty-ninth-st.; Transfiguration ch., Twenty-ninth-st. near Fifth-av.
- Rev. R. S. Howland, D. D., 409 W. Twenty-third-st.; Holy Apostles' ch., Ninth-av. cor. Twenty-eighth-st.
- Rev. Ralph Hoyt, E. Fifty-fourth-st.; Good Shepherd ch., Fifty-fourth-st., near Second-av.
- Rev. W. P. Brown; Reconciliation ch., 150 E. Thirty-first-st.
- Rev. —; Holy Saviour ch., E. Twenty-fifth-st., near Madison-av.
- Rev. Theodore Irving, D. D., 32 West Thirty-second-st.; Mediator ch., Lexington-av. cor. Thirtieth-st.
- Rev. Thomas A. Jaggard, —; Anthon Memorial ch., Forty-eighth-st., near Seventh-av.
- Rev. F. E. Lawrence, 51 W. Twentieth-st.; Holy Communion ch., Sixth-av. cor. Twentieth-st.
- Rev. R. W. Lewis, 62 Pike-st.; Our Saviour ch., foot of Pike-st.
- Rev. James Millet, 109 Second-av.; ch. of the Holy Martyrs, 39 Forsyth-st.
- Rev. Henry E. Montgomery, D. D., 115 E. Thirtieth-st.; ch. of the Incarnation, Madison-av. cor. Thirty-fifth-st.
- Rev. Wm. F. Morgan, D. D., Astoria; St. Thomas' ch., Fifth-av., cor. Fifty-third-st.
- Rev. John Morgan, 762 Broadway; St. Philip's ch., (col'd,) 305 Mulberry-st.
- Rev. C. W. Morrill, 99 E. Forty-ninth-st.; St. Alban's ch., Lexington-av., cor. Forty-seventh-st.
- Rev. W. A. Muhlenberg, D. D., St. Luke's Hospital; ch. of Holy Communion, Sixth-av. cor. Twentieth-st.
Trinity chapel, 15 W. Twenty-fifth-st.
- Rev. Frederick Ogilby, D. D., 219 W. Twenty-third-st.; Trinity ch., Broadway.
- Rev. T. M. C. Peters, D. D., Broadway, cor. 101st-st.; St. Michael's ch., Broadway, cor. Ninety-ninth-st.
- Rev. C. E. Phelps, W. Eighty-first-st.; All Angels' ch., Eighty-first-st. near Eleventh-av.
- Rt. Rev. Horatio Potter, D. D., 38 E. Twenty-second-st.
- Rev. Joseph H. Price, D. D., 109 W. Twenty-second-st.; St. Stephen's ch.
- Rev. H. F. Roberts, —; Holy Comforter ch., foot of Hubert-st.

Rev. C. Schriamm, 91 Second-st.; St. George's German ch., Fourteenth-st. near First-av.

Rev. S. Seabury, D. D., W. Twentieth-st. near Ninth-av.; Annunciation ch., 110 W. Fourteenth-st.

Rev. F. M. Serenbez, Harlem; St. Paul's ch., Harlem.

Rev. F. Sill, 25 Vandam-st.; St. Ambrose ch., 117 Thompson-st.

Rev. John Cotton Smith, D. D., 7 W. Tenth-st.; Ascension ch., Fifth-av., cor. Tenth-st.

Rev. J. H. Smith, 156th-st.; Intercession ch., 154th-st., cor. Tenth-av.

Rev. J. W. Shackelford, Yorkville; ch. of the Redeemer.

Rev. Horatio Southgate, D. D., Zion ch., Madison-av., cor. Thirty-eighth-st.

Rev. C. S. Stephenson, 220 E. Nineteenth-st.; Mission ch., 220 E. Nineteenth-st.

Rev. W. A. Stirling, 58 Rutgers-st.; Mission ch., 256 Madison-st.

Rev. T. H. Taylor, D. D., 804 Broadway; Grace ch., 800 Broadway.

Rev. I. H. Tuttle, 477 Hudson-st.; St. Luke's ch., 483 Hudson-st.

Rev. Stephen H. Tyng, D. D., 213 E. Sixteenth-st.; St. George's ch., Rutherford-pl.

Rev. Stephen H. Tyng, jr., 117 W. Forty-third-st.; Holy Trinity ch., Madison-av., cor. Forty-second-st.

Rev. A. Verren, D. D., 28 W. Twenty-second-st.; Du St. Esprit ch., 30 W. Twenty-second-st.

Rev. A. H. Vinton, D. D., 156 Second-av.; St. Mark's ch., Stuyvesant-st.

Rev. F. Vinton, D. D., Brooklyn; Trinity ch., Broadway.

Rev. W. D. Walker, 82 E. Twenty-third-st.; Mission ch., 133 E. Twenty-third-st.

Rev. E. A. Washburn, D. D., 64 E. Twenty-first-st.; Calvary ch., Fourth-av., cor. Twenty-first-st.

Rev. S. H. Weston, D. D., 409 W. Twenty-third-st.; St. John's ch., 46 Varick-st.

Rev. J. F. Young, 30 Laight-st.; St. John's ch., 46 Varick-st.

Rev. —; Messiah ch., (col'd,) 192 Mercer-st.

Rev. R. G. Quennell, St. John Evangelist ch., 20 Hammond-st.

Rev. —; Union ch., (col'd,) Second-av., near Eighty-fourth-st.

Rev. Wm. Dymond, Mission ch., Eighty-fourth-st., near Fourth-av.

Rev. S. F. Dunham, Christ ch., Mission, 176 W. Eighteenth-st.

• Rev. W. T. Sabine; ch. of the Atonement, Madison-av., cor. Twenty-eighth-st.

Epiphany, 130 Stanton-st.

Holy Trinity Mission, Eighty-fourth-st., near Fourth-av.

Holy Trinity Mission, Eleventh-av., cor. Fifty-second-st.

Ascension Mission, Forty-third-st., near Ninth-av.

Ascension Mission, 593 Hudson-st.

City Missions, 304 Mulberry-st. and 23 Amity-st.

Spanish ch., 15 W. Twenty-fifth-st.

ROMAN-CATHOLIC.

Rev. James Boyce, 141 Henry-st. ; St. Teresa, ch., Rutgers-st., cor. Henry-st.

Rev. John Breen, — ; Annunciation ch., 131st-st., near B'way.

Rev. F. Farley, 23 Oliver-st. ; St. James' ch., 32 James-st.

Rev. G. R. Brophy, — ; St. Paul's ch., 117th-st., near Fourth-av.

Rev. W. H. Clowry, 668 Second-av. ; St. Gabriel's ch., Thirty-seventh-st., near Second-av.

Rev. E. McGlynn ; St. Stephen's ch., 93 E. Twenty-eighth-st.

Rev. M. Curran, 31 City-Hall-pl. ; St. Andrew's ch., Duane-st., cor. City-Hall-pl.

Rev. Augustin Dantner, 127 W. Thirtieth-st. ; St. John Baptist ch., (Ger.,) 125 W. Thirtieth-st.

Rev. A. J. Donnelly, 261 W. Thirty-first-st. ; St. Michael's ch., 265 W. Thirty-first-st.

Rev. T. Farrell, 40 W. Washington-pl. ; St. Joseph's ch., Sixth-av. cor. W. Washington-pl.

Rev. F. A. Gerber, — ; St. Joseph's ch., (Ger.,) 125th-st., cor. Ninth-av.

Rev. I. T. Hecker, — ; St. Paul's ch., Fifty-ninth-st. cor. Ninth-av.

Rev. F. Krebez, 135 Second-st. ; St. Nicholas' ch., (Ger.,) 125 Second-st.

Rev. Annet Lafont, 90 W. Twenty-fourth-st. ; St. Vincent de Paul ch., 127 W. Twenty-third-st.

Rev. J. Loyzance, 49 W. Fifteenth-st. ; St. Francis Xavier ch., 36 W. Sixteenth-st.

Rev. M. McAleer, 343 W. Twenty-fifth-st. ; St. Columba ch., 339 W. Twenty-fifth-st.

Rev. P. McCarthy, 331 W. Forty-second-st. ; Holy Cross ch., 335 W. Forty-second-st.

Rt. Rev. John McCloskey, D. D., 198 Madison-av.

Rev. Geo. McCloskey, 44 Second-av. ; Nativity ch., 46 Second-av.

• Rev. J. H. McGean, 263 Mulberry-st. ; St. Patrick's ch., Mott-st.

- Rev. Eugene Maguire, 263 Mulberry-st. ; St. Patrick's ch., Mott-st.
- Rev. Michael McCarron, 11 Ridge-st. ; St. Mary's ch., 438 Grand-st.
- Rev. James McMahon, — ; St. John Evangelist ch., Fiftieth-st., near Fifth-av.
- Rev. F. McNeirny, 263 Mulberry-st. ; St. Patrick's ch., Mott-st.
- Rev. P. F. McSweeney, 263 Mulberry-st. ; St. Patrick's ch., Mott-st.
- Rev. Thomas J. Mooney, 119 Av. B ; St. Bridget's ch., Av. B, cor. Eighth-st.
- Rev. W. P. Morrogh, 243 E. Fourteenth-st. ; Immaculate Conception ch., 245 E. Fourteenth-st.
- Rev. V. Beaudwin ; St. Lawrence ch., Eighty-fourth-st., near Fourth-av.
- Rev. M. Nicot, 181 E. Forty-seventh-st. ; St. Boniface ch., Forty-seventh-st. near Second-av.
- Rev. M. Leimgruber, 173 Third-st. ; Most Holy Redeemer ch., 165 Third-st.
- Rev. A. Pfeiffer, 89 W. Thirty-first-st. ; St. Francis ch., (Ger.), 93 W. Thirty-first-st.
- Rev. T. S. Preston, 145 Eighth-st. ; St. Ann's ch., 149 Eighth-st.
- Rev. Wm. Starrs, 263 Mulberry-st.
- Rev. B. Stroehle, — ; Assumption ch., Forty-ninth-st., near Ninth-av.
- Rev. Wm. Quinn, 16 Barclay-st. ; St. Peter's ch., Barclay-st. cor. Church-st.
- Rev. Thos. Treanor, 30 Mott-st. ; Transfiguration ch., Mott-st. cor. Park-st.
- Rev. M. Leimgruber, 173 Third-st. ; St. Alphonso's ch., 10 Thompson-st.
Church, 155 Sullivan-st.
German ch., Manhattanville.
Holy Innocents, 94 W. Thirty-seventh-st.

UNITARIAN.

- Rev. H. W. Bellows, D. D., 59 E. Twentieth-st. ; All Souls' ch., Fourth-av., cor. Twentieth-st.
- Rev. O. B. Frothingham, 50 W. Thirty-sixth-st. ; Third ch., Fortieth-st., near Sixth-av.
- Rev. S. Osgood, D. D., 154 W. Eleventh-st. ; Messiah ch., Park-av., cor. Thirty-fourth-st.

UNIVERSALIST.

- Rev. E. G. Brooks, 274 W. Twenty-fifth-st. ; 65 W. Thirty-fifth-st.
 Rev. E. H. Chapin, D. D., 14 E. Thirty-third-st. ; Fourth ch.,
 Fifth-av., cor. Forty-fifth-st.
 Rev. G. L. Demarest ; Second ch., Second-av., cor. Eleventh-st.
 Rev. Day K. Lee, — ; Third ch., 206 Bleecker-st.
 Mission, Third-av., near Sixtieth-st.
 Mission, Fourth-av., cor. 129th-st.

MISCELLANEOUS.

- Rev. J. L. Bishop, 108 First-st. ; Christian Israelites ch., 108 First-st.
 Rev. J. F. Busche, 108 Rivington-st. ; Ger. Evangel. Ref. ch., 97
 Suffolk-st.
 Rev. S. A. Baker, 221 W. Forty-eighth-st. ; Wesleyan Methodist
 ch., 235 W. Forty-eighth-st.
 Rev. Urban C. Brewer, 25 E. Thirty-first-st. ; Disciples' ch., 24 W.
 Twenty-eighth-st.
 Rev. C. B. Fliehr, 108 W. Twenty-fourth-st. ; Evangelical ch., 108
 W. Twenty-fourth-st.
 Rev. D. M. Fackler, 216 W. Twenty-fifth-st. ; Catholic Apostolic
 ch., 128 W. Sixteenth-st.
 Rev. C. Giles, 43 E. Thirty-third-st. ; Swedenborgian ch., 68 E.
 Thirty-fifth-st.
 Rev. P. Hawkes, 7 Seventh-av. ; Messiah ch., 7 Seventh-av.
 Rev. A. A. Reinke, — ; Moravian ch., Fourth-av., cor. Twenty-
 third-st.
 Rev. M. A. Erdmann, — ; Moravian Mission.
 Rev. E. D. Murphy, 72 Madison-st. ; Mariner's ch., Madison-st.,
 cor. Catharine.
 Rev. Wm. Roberts, 204 E. Sixteenth-st. ; Welsh ch., 225 E. Thir-
 teenth-st.
 Rev. G. Storrs, — ; Second Advent ch., 68 E. Broadway.
 Ch. of True Believers, Clinton Hall.
 First Congregational Methodist, 108 W. Twenty-fourth-st.
 Seventh-day Baptist, Second-av., cor. Eleventh-st.
 McAlister Mission, Cannon-st.
 Mission, 180 Wooster-st.
 Mission, Broadway, cor. Forty-third-st.
 Mission, 110 Centre-st.
 Mission, Third-av., cor. Eighty-sixth-st.

Mission, Third-av., cor. 109th-st.
Mission, Fifth-st., cor. First-av.
Mission, Ludlow-st., near Delancey-st.
Mission, 218 Ninth-av., cor. Twenty-fifth-st.
Mission, 473 Grand-st.

NEW YORK CITY MISSIONS.

First ward, 27 Greenwich-st.
Fifth ward, 74 W. Broadway.
Sixth ward, 122 Leonard-st.
Seventh ward, 290 Madison-st., cor. Montgomery-st.
Eighth ward, 286 Spring-st.
Tenth ward.
Eleventh ward.
Eleventh ward, 44 Av. C, cor. Fourth-st., (German.)
Thirteenth ward, 70 Columbia-st.
Thirteenth ward, 70 Columbia-st., (German.)
Fourteenth ward, 212 Grand-st.
Fifteenth ward.
Sixteenth ward, 273 W. Twenty-fifth-st., cor. Eighth-av.
Seventeenth ward.
Eighteenth ward, 283 Avenue B.
Eighteenth ward, 176 E. Twenty-second-st., near First-av.
Nineteenth ward, Lexington-av., cor. Forty-sixth-st.
Twentieth ward, 449 Eleventh-av.

At the First Ward Mission, 27 Greenwich-street, there is a Sabbath afternoon service for seamen, and also a daily reading-room, under the auspices of the New York Port Society.

At the Sixteenth Ward Mission, 273 West Twenty-fifth-street, there is a Sabbath-school at 2 p. m., conducted by the Twenty-third-street Presbyterian church, and also a daily Industrial School, by the American Female Guardian Society.

At the Hall, 147 Fifth-street, corner First-avenue, there is a Mission Sabbath-school, in charge of members of the Fourth-avenue Presbyterian church and others, at 2½ p. m.

In addition to the foregoing Mission Meetings, there are services held every week in thirty or more rooms in tenant-houses, hospitals, homes, etc.

CHURCHES OF NEW YORK,

ARRANGED ACCORDING TO THEIR DENOMINATIONS.

BAPTIST.

1. Abyssinian (col'd)----166 Waverley-pl.-----9th ward.
2. Amity-street-----W. 54th-st., n. Eighth-av.---22d ward.
3. Antioch -----264 Bleecker-st.-----9th ward.
4. Berean -----35 Downing-st.-----9th ward.
5. Bethesda-----W. 53d-st., n. Seventh-av.---22d ward.
6. Bethlehem -----395 W. Forty-fifth-st.-----22d ward.
7. Bloomingdale-----220 W. Forty-second-st.-----22d ward.
8. Calvary-----50 W. Twenty-third-st.-----18th ward.
9. Cannon-street -----Madison-st., c. Gouverneur-st.-7th ward.
10. Ebenezer -----154 W. Thirty-sixth-st.-----20th ward.
11. Fifth-avenue -----Forty-sixth-st. n. Fifth-av.---19th ward.
12. Fifth-avenue -----Fifth-av., n. 126th-st.-----12th ward.
13. First -----354 Broome-st.-----14th ward.
14. First German-----
15. First Mariners'-----Oliver-st., cor. Henry-st.-----4th ward.
16. Freewill Baptist-----74 W. Seventeenth-st.-----16th ward.
17. Laight-street -----Laight-st., cor. Varick-st.-----5th ward.
18. Macdougall-street-----24 Macdougall-st.-----8th ward.
19. Madison-avenue-----Madison-a., cor. Thirty-first-st.21st ward.
20. Murray-hill -----Lexington-av., cor. 37th-st. --21st ward.
21. North -----120 Christopher-st. -----9th ward.
22. Pilgrims'-----W. Thirty-third-st., n. 8th-av.20th ward.
23. Sixth-street -----211 Sixth-st.-----11th ward.
24. Sixteenth-street ----257 W. Sixteenth-st.-----16th ward.
25. South-----147 W. Twenty-fifth-st.-----16th ward.
26. Stanton-street-----36 Stanton-st.-----17th ward.
27. Tabernacle -----162 Second-av.-----17th ward.
28. Welsh -----141 Chrystie-st.-----10th ward.
29. Yorkville-----E. 82d-st., n. Second-av. -----19th ward.
30. First Ch. Mission----359 Broome-st.-----14th ward.
31. First Ch. Mission-----

32. Tabernacle Ch. Miss.--189 E. Twentieth-st.-----18th ward.
33. Tabernacle Ch. Miss.--First-av., cor. Ninth-st.-----17th ward.
34. Sixteenth-st. Ch. Miss.Ninth-av., n. Twelfth-st.-----9th ward.
35. Madison-aven. Miss.--
36. Madison-aven. Miss.--
37. Hope Mission-----435 E. Houston st.-----11th ward.
38. German Mission -----312 W. Thirty-ninth-st.-----20th ward.
39. German Mission -----Sixth-av., cor. 39th-st.-----20th ward.
40. German Salem-----435 E. Houston-st.-----11th ward.
41. Fifty-second-street ---Cor. Third-av.-----19th ward.
42. Mission-----Broadway, and 81st-st.-----22d ward.

CONGREGATIONAL.

1. Bethesda (col'd)-----681 Sixth-av.-----20th ward.
2. Ch. of the Pilgrims---235 W. Forty-eighth-st.-----22d ward.
3. Ch. of the Puritans---
4. Tabernacle-----Sixth-av., cor. W. 34th-st. ---21st ward.
5. New England-----10 W. Forty-first-st.-----22d ward.
6. Welsh -----33 E. Eleventh-st.-----17th ward.
7. Tabernacle Mission---235 W. Forty-eighth-st.-----22d ward.
8. Tabernacle Mission---
9. Harlem -----Second-av., cor. 125th-st.-----12th ward.

REFORMED DUTCH.

1. Bloomingdale-----Broadway, cor. 68th-st.-----22d ward.
2. Collegiate-----Fulton-st., cor. William-st.---2d ward.
3. Collegiate-----Lafayette-pl., cor. Fourth-st.--15th ward.
4. Collegiate-----Fifth-av., cor. 29th-st.-----21st ward.
5. Collegiate-----Fifth-av., c. Forty-eighth-st.-19th ward.
6. Fourth Ger. Mission--112 W. Twenty-ninth-st.-----20th ward.
7. Ger. Evang. Miss.---141 E. Houston-st.-----17th ward.
8. Ger. Ref. Protestant--129 Norfolk-st.-----17th ward.
9. Greenwich-----
10. Harlem -----Third-av., cor. 121st-st.-----12th ward.
11. Manhattan -----71 Avenue B-----11th ward.
12. Market-st. -----
13. Mount Pleasant-----
14. Northwest-----145 W. Twenty-third-st.-----16th ward.
15. Prospect-hill-----85th-st., near Second-av.-----19th ward.
16. South-----Fifth-av., c. Twenty-first-st.--18th ward.
17. Thirty-fourth-street --307 W. Thirty-fourth-st.-----20th ward.

18. Twenty-first-street ---47 W. Twenty-first-st. -----18th ward.
19. Union -----25 Sixth-av.-----9th ward.
20. Washington-square---Wooster-st., c. Wash'ton-pl.--15th ward.
21. Collegiate Mission---160 W. Twenty-ninth-st.-----20th ward.
22. Collegiate Mission---Ninth-av., n. Fortieth-st.-----20th ward.
23. Collegiate Mission---Seventh-av., n. Fifty-fifth-st.-22d ward.
24. Collegiate Mission---Fulton-st., cor. William-st.--2d ward.
25. South Ch. Mission---Ninth-av., c. Twenty-fifth-st.-16th ward.
26. Northwest Ch. Miss.--104 W. Twenty-fourth-st. ---16th ward.
27. 34th-st. Ch. Mission--W. 29th-st., near Ninth-av.--20th ward.
28. Washington-sq. Miss.-

FRIENDS.

1. Meeting-house-----E. 15th-st., cor. Rutherford-pl.-18th ward.
2. Meeting-house-----E. Twentieth-st., n. Third-av.-18th ward.
3. Meeting-house-----43 W. 27th-st., n. Sixth-av.--21st ward.
4. Mission -----Thirty-eighth-st., n. 2d-av.--21st ward.
5. Mission-----W. 30th-st., near Sixth-av.--20th ward.

JEWS.

1. Adaareth El-----83 E. Twenty-ninth-st.-----21st ward.
2. Adas Jeshurun-----135 W. Thirty-ninth-st. -----20th ward.
3. Abovath Chesed -----Av. C, cor. E. Fourth-st. -----11th ward.
4. Anshi Bikur Cholim--Ridge-st., cor. E. Houston-st.--11th ward.
5. Anshi Chesed-----146 Norfolk-st.-----17th ward.
6. Beth Cholim-----138 W. Twenty-eighth-st. ---20th ward.
7. Beth Joseph-----22 Catharine-st.-----4th ward.
8. Beth El-----176 W. Thirty-third-st. -----20th ward.
9. Beth Hamidrash -----78 Allen-st.-----10th ward.
10. Beth Hamidrash 2d---157 Chatham-st.-----4th ward.
11. Beth Israel Bikur Cholim-56 Chrystie-st.-----10th ward.
12. Bikur Cholim U-Kadisha-63 Chrystie-st. -----10th ward.
13. Bnai Israel -----41 Stanton-st.-----17th ward.
14. Bnai Jeshurun-----145 W. Thirty-fourth-st.-----20th ward.
15. Bnai Cholim-----127½ Columbia-st.-----11th ward.
16. Darech Amuno -----164 Greene-st.-----15th ward.
17. Mischkan Israel-----Allen-st., cor. Grand-st.-----10th ward.
18. Poel Zedeck-----W. 29th-st., cor. Eighth-av.--20th ward.
19. Rodeph Shalom -----8 Clinton-st.-----11th ward.
20. Shaari Berocho-----35 Sixth-st.-----17th ward.
21. Shaari Roch Mim---156 Attorney-st.-----11th ward.
22. Shaari Tephila-----1306 Broadway-----20th ward.

23. Shaari Zedek	-----38 Henry-st.	-----7th ward.
24. Shaaer Hashamoin	---91 Rivington-st.	-----10th ward.
25. Shearith Israel	-----W. 19th-st., near Fifth-av.	---18th ward.
26. Temple	-----84 E. Twelfth-st.	-----17th ward.
27. Emmanuel	-----Forty-third-st., cor. Fifth-av.	---19th ward.
28. Synagogue	-----E. 52d-st., cor. Second-av.	---19th ward.

LUTHERAN.

1. Lutheran	-----Av. B, cor. Ninth-st.	-----11th ward.
2. St. James'	-----103 E. Fifteenth-st.	-----18th ward.
3. St. John's	-----81 Christopher-st.	-----9th ward.
4. St. Luke's	-----208 W. Forty-third-st.	-----22d ward.
5. St. Marcus'	-----52 Sixth-st.	-----17th ward.
6. St. Matthew's	-----Walker-st., c. Cortlandt alley	---6th ward.
7. St. Paul's	-----226 Sixth-av.	-----18th ward.
8. St. Peter's	-----125 E. Fiftieth-st.	-----19th ward.
9. Yorkville	-----E. 87th-st., near Fourth-av.	---12th ward.
10. Evangelical Lutheran	---123d-st., near Seventh-av.	---12th ward.
11. Swedish	-----52 Market-st.	-----7th ward.
12. Swedish	-----91 E. Twenty-second-st.	-----18th ward.

METHODIST EPISCOPAL.

1. Alanson	-----52 Norfolk-st.	-----13th ward.
2. Allen-st.	-----126 Allen-st.	-----10th ward.
3. Bedford-st.	-----28 Morton-st.	-----9th ward.
4. Beekman-hill	-----E. Fiftieth st. n. Second-av.	---19th ward.
5. Bethel Ship	-----Foot of Carlisle-st.	-----1st ward.
6. Central	-----44 Seventh-av.	-----9th ward.
7. Duane	-----294 Hudson-st.	-----8th ward.
8. Eighteenth-st.	-----193 W. Eighteenth-st.	-----16th ward.
9. Lexington-avenue	---Lexington-av., cor. 52d-st.	---19th ward.
10. Fifty-third-street	---133 W. Fifty-third-st.	-----22d ward.
11. Forsyth-street	-----10 Forsyth-st.	-----10th ward.
12. Forty-third-street	---177 W. Forty-third-st.	-----22d ward.
13. German	-----252 Second-st.	-----11th ward.
14. German Mission	---222 W. Fortieth-st.	-----20th ward.
15. Greene-street	-----59 Greene-st.	-----8th ward.
16. Harlem	-----125th-st., near Third-av.	-----12th ward.
17. Hedding	-----170 E. Seventeenth-st.	-----18th ward.
18. Jane-street	-----13 Jane-st.	-----9th ward.
19. Janes' Mission	---461 W. Forty-fourth-st.	-----22d ward.
20. John-st.	-----44 John-st.	-----2d ward.

21. Ladies' 5 Points Miss.	-61 Park-st.	-----6th ward.
22. Rose-hill	-----125 E. Twenty-seventh-st.	----21st ward.
23. St. Paul's	-----Fourth-av., cor. 22d-st.	-----18th ward.
24. Second-avenue	-----Second-av., cor. 119th-st.	-----12th ward.
25. Second-street	-----276 Second-st.	-----11th ward.
26. Seventh-street	-----24 Seventh-st.	-----17th ward.
27. Thirtieth-street	-----207 W. Thirtieth-st.	-----20th ward.
28. Thirty-seventh-street	-129 E. Thirty-seventh-st.	----21st ward.
29. Trinity	-----248 W. Thirty-fourth-st.	-----20th ward.
30. Twenty-fourth-street	-251 W. Twenty-fourth-st.	----16th ward.
31. Washington-square	-137 W. Fourth-st.	-----15th ward.
32. West Harlem	-----125th-st., near Sixth-av.	-----12th ward.
33. Willett-street	-----7 Willett-st.	-----13th ward.
34. Yorkville	-----E. 86th-st., near Fourth-av.	-12th ward.
35. Mission	-----Thirty-fifth-st., n. Tenth-av.	-20th ward.
36. Mission	-----117 Bank-st.	-----9th ward.
37. Mission	-----21 Worth-st.	-----5th ward.
38. Mission	-----932 Third-av.	-----19th ward.
39. Mission	-----319 Rivington-st.	-----13th ward.
40. Mission	-----283 Avenue B	-----18th ward.
41. Mission	-----146 Avenue A	-----17th ward.
42. Central Ch. Mission	-Seventh-av., cor. 22d-st.	----16th ward.
43. St. Paul's Mission	----Seventh-av., cor. 26th-st.	----20th ward.
44. German Mission	-----Greenwich-st., c. Cortlandt-st.	-3d ward.
45. Second-st. Mission	----Av. B, cor. Third-st.	-----11th ward.
46. Seventh-st. Mission	----Av. C, cor. Fourth-st.	-----11th ward.
47. Central Park Mission	-Third-av., cor. 70th-st.	-----19th ward.
48. Mission	-----Broadway, cor. Sixty-ninth-st.	-22d ward.
49. Mission	-----Sixty-first-st., n. Third-av.	----19th ward.
50. Mission	-----392 Broome-st.	-----14th ward.
51. Mission	-----186 Franklin-st.	-----5th ward.

AFRICAN METHODIST EPISCOPAL.

1. African Union	-----161 W. Fifteenth-st.	-----16th ward.
2. Bethel	-----214 Sullivan-st.	-----15th ward.
3. Zion	-----331 Bleecker-st.	-----9th ward.

METHODIST PROTESTANT.

1. First	-----87 Attorney-st.	-----13th ward.
----------	----------------------	-----------------

PRESBYTERIAN.

1. African Union (col'd) 60 W. Thirtieth-st. -----20th ward.
2. Alexander -----107 Seventh-av. -----16th ward.
3. Allen-street -----61 Allen-st. -----10th ward.
4. Brick -----Fifth-av., c. Thirty-sev'th-st. -21st ward.
5. Central -----W. Fiftieth-st., n. Eighth-av. -22d ward.
6. Chelsea -----353 W. Twenty-second-st. ---16th ward.
7. Covenant -----Fourth-av., c. Thirty-fifth-st. -21st ward.
8. Covenant (col'd) ----231 W. Sixteenth-st. -----16th ward.
9. The Sea and Land ---Market-st., cor. Henry -----7th ward.
10. Eighty-fourth-street -84th-st., n. Bloomingdale-r'd -22d ward.
11. Eleventh -----Fifty-fifth-st., n. Lex'ton-av. -19th ward.
12. Fifteenth-street ----71 E. Fifteenth-st. -----18th ward.
13. Fifth-avenue -----Fifth-av., c. E. Nineteenth-st. 18th ward.
14. First -----Fifth-av., c. Eleventh-st. ----15th ward.
15. First German -----
16. Fortieth-street -----Fortieth-st., n. Lex'ton-av. ---19th ward.
17. Forty-second-street --233 W. Forty-second-st. ----22d ward.
18. Fourth-avenue -----286 Fourth-av. -----18th ward.
19. Fourteenth-street ---Fourteenth-st., c. Second-av. -17th ward.
20. French Evangelical --9 University-pl. -----15th ward.
21. German -----290 Madison-st. -----7th ward.
22. Fourth -----W. 34th-st., n. Sixth-av. ----20th ward.
23. Harlem -----127th-st., n. Third-av. -----12th ward.
24. Irish -----17 Greene-st. -----8th ward.
25. Lexington-aveuue ---Lex'ton-av. c. Forty-sixth-st. -19th ward.
26. Madison-square ----Madison-av., c. 24th-st. ----18th ward.
27. Manhattanville ----126th-st., n. Ninth-av. -----12th ward.
28. Mercer-street -----Mercer-st., n. Eighth -----15th ward.
29. Mount Washington --Kingsbridge -----12th ward.
30. North -----Ninth-av., c. Thirty-first-st. --20th ward.
31. Rutgers -----Madison-av., c. 29th-st. ----21st ward.
32. Scotch -----53 W. Fourteenth-st. -----18th ward.
33. Seventh -----Broome-st., cor. Ridge -----13th ward.
34. Shiloh (col'd) -----61 Prince-st. -----14th ward.
35. Spring-street -----246 Spring-st. -----8th ward.
36. Thirteenth-street ---115 W. Thirteenth-st. -----9th ward.
37. University-place ----University-pl., cor. Tenth-st. -15th ward.
38. W. Twenty-third-st. -210 W. Twenty-third-st. ----16th ward.
39. Washington Heights -Washington Heights -----12th ward.
40. West -----W. Forty-second-st., n. Fifth-a. 19th ward.

41. West Fiftieth-street --
42. Westminster -----151 W. Twenty-second-st. ----16th ward.
43. Yorkville-----145 E. Eighty-sixth-st.-----12th ward.
44. Mission-----W. 33d-st., cor. Eighth-av.---20th ward.
45. Madison-sq. Mission--419 Third-av. -----21st ward.
46. Madison sq. Mission--
47. Fifteenth-st. Mission -Fourteenth-st., n. First-av. --17th ward.
48. Mercer-st. Mission ---118 Avenue D -----11th ward.
49. Mercer-st. Mission ---First-st., n. First-av.-----17th ward.
50. Mercer-st. Mission ---
51. W. Twenty-third-st. M. 273 W. Twenty-fifth st.-----16th ward.
52. Fourth-av. Mission --Fifth-st., c. First-av. -----17th ward.
53. Fourth-av. Mission --22d-st., near First-av.-----18th ward.
54. Fourth-av. Mission --
55. West Church Mission-718 Ninth-avenue -----22d ward.
56. West Church Mission-Eighth-av., cor. 44th-st. -----22d ward.
57. Eleventh Ch. Mission-E. Fifty-second-st., n. 2d-av. -19th ward.
58. Brick Church Mission-230 W. Thirty-fifth-st.-----20th ward.
59. Covenant Mission---Fortieth-st., n. Third-av. ----21st ward.
60. Fifth-av. Ch. Mission-107 Seventh-av.-----16th ward.
61. Fifth-av. Ch. Mission-282 W. Eighteenth-st. -----16th ward.
62. Fifth-av. Ch. Mission-9 King-st. -----8th ward.
63. Fifth-av. Ch. Mission-
64. North Ch. Mission ---Eighth-av., cor. 33d-st. -----20th ward.
65. Spring-st. Mission ---
66. First Church Mission-67 W. Twelfth-st. -----15th ward.
67. University-pl. Miss. --140 Sixth-av. -----15th ward.
68. Fourteenth-st. Miss.--E. Twelfth-st., n. Av. B -----17th ward.
69. Fourteenth-st. Miss.--23d-st., cor. Second-av. -----18th ward.
70. Seventh Ch. Mission -203 Rivington-st. -----13th ward.
71. Thirteenth-st. Ch. M. Tenth-avenue -----9th ward.
72. Park Church -----85th-st., n. Third-av. -----19th ward.
73. Sixth-av. Church ----Sixth-av. c. Thirty-fourth-st.--21st ward.

UNITED PRESBYTERIAN.

1. Eleventh-street-----33 E. Eleventh st. -----17th ward.
2. Jane-street-----41 Jane-st. -----9th ward.
3. Seventh-avenue-----29 Seventh-av.-----9th ward.
4. Seventh -----434 W. Forty fourth-st.-----22d ward.
5. Third -----41 Charles-st.-----9th ward.
6. W. Twenty-fifth-st. --161 W. Twenty fifth-st.-----16th ward.

ASSOCIATE REFORMED PRESBYTERIAN.

1. Fourth -----157 Thompson-st. -----8th ward.

REFORMED PRESBYTERIAN.

1. First -----123 W. Twelfth-st. -----9th ward.
 2. First -----252 W. Twenty-eighth-st. ---20th ward.
 3. Second -----Second-av., c. Eleventh-st. ---17th ward.
 4. Second -----167 W. Eleventh-st. -----9th ward.
 5. Third -----238 W. Twenty-third-st. -----16th ward.
 6. 2d Ref. Pres. Miss. ---Hudson-st., c. Christopher ---9th ward.

PROTESTANT EPISCOPAL.

1. Advent-----53 W. Forty-sixth-st.-----19th ward.
 2. All Angels' -----W. Eighty-first-st.; n. 11th-av. 22d ward.
 3. All Saints' -----286 Henry-st.-----7th ward.
 4. Annunciation -----110 W. Fourteenth-st. -----9th ward.
 5. Ascension-----Fifth-av., cor. Tenth-st. -----15th ward.
 6. Calvary-----Fourth-av., cor. 21st-st. -----18th ward.
 7. Chap. Holy Comforter-Foot of Hubert-st., N. R. ---5th ward.
 8. Christ -----Fifth-av., c. Thirty-fifth-st. ---21st ward.
 9. Du St. Esprit -----30 W. Twenty-second-st. -----18th ward.
 10. Epiphany -----130 Stanton-st. -----17th ward.
 11. Good Shepherd-----E. Fifty-fourth-st., n. 2d-av. ---19th ward.
 12. Grace -----800 Broadway -----15th ward.
 13. Holy Apostles -----Ninth-av., c. Twenty-eighth ---20th ward.
 14. Holy Communion---Sixth-av., c. Twentieth-st. ---18th ward.
 15. Holy Innocents (tem.)Sixth-av. and 42d-st. -----22d ward.
 16. Holy Martyrs -----39 Forsyth-st. -----10th ward.
 17. Holy Trinity -----Madison-av., cor. 42d-st. -----19th ward.
 18. Incarnation -----35th-st., cor. Madison-av. ---21st ward.
 19. Intercession -----154th-st., c. Tenth-av. -----12th ward.
 20. Mediator -----Lex'ton-av., c. Thirtieth-st. ---21st ward.
 21. Memorial, Anthon -- 103 W. Forty-eighth st. -----22d ward.
 22. Messiah, (col'd) -----
 23. Nativity -----70 Av. C -----11th ward.
 24. Our Saviour-----Foot of Pike-st., E. R. -----7th ward.
 25. Reconciliation-----150 E. Thirty-first-st. -----21st ward.
 26. Redeemer-----E. Eighty-fifth-st., n. 2d-av. ---19th ward.
 27. Redemption-----98 E. Fourteenth-st. -----17th ward.
 28. Resurrection -----
 29. St. Alban's -----Lexington-av., cor. 47th-st. --19th ward.

30. St. Andrew's -----127th-st., n. Fourth-av. -----12th ward.
31. St. Ann's -----7 W. Eighteenth-st. -----18th ward.
32. St. Bartholomew's ---Lafayette-pl., c. Gt. Jones-st.-15th ward.
33. St. Clement's -----108 Amity-st.-----15th ward.
34. St. George's-----Rutherford-pl., c. Sixteenth-st.18th ward.
35. St. James' -----E. Sixty-ninth-st., n. Third-av.19th ward.
36. St. John Baptist ----231 Lexington-av.-----21st ward.
37. St. John Evangelist --20 Hammond-st. -----9th ward.
38. St. John's -----46 Varick-st. -----5th ward.
39. St. Luke's -----483 Hudson-st.-----9th ward.
40. St. Mark's -----Stuyvesant-st., n. Second-av. -17th ward.
41. St. Mary's -----Manhattanville -----12th ward.
42. St. Matthias' -----Broadway, c. Thirty-second-st.21st ward.
43. St. Michael's-----Broadway, c. W. Ninety-ninth 12th ward.
44. St. Paul's -----Broadway, cor. Vesey-st.----3d ward.
45. St. Paul's-----E. 127th-st., n. Fourth-av.---12th ward.
46. St. Peter's -----224 W. Twentieth-st. -----16th ward.
47. St. Philip's (col'd)---305 Mulberry-st. -----15th ward.
48. St. Stephen's -----30 W. Twenty-second-st. ---18th ward.
49. St. Thomas'-----Fifth-av., c. Fifty-third-st. ---19th ward.
50. St. Timothy's -----W. Fifty-seventh, n. Eighth-a.22d ward.
51. Transfiguration-----E. Twenty-ninth, n. Fifth-av.-21st ward.
52. Trinity -----Broadway, cor. Rector-st. ----1st ward.
53. Trinity Chapel -----15 W. Twenty-fifth-st.-----18th ward.
54. Union, (col'd)-----Second-av., n. Eighty-fourth -19th ward.
55. Zion-----Madison-av., c. Thirty-eighth-21st ward.
56. Calvary chapel -----133 E. Twenty-third-st.-----18th ward.
57. Chapel -----Third-av., n. E. 77th-st. ----19th ward.
58. Madison-st. Mission --256 Madison-st.-----7th ward.
59. St. George's Mission -220 E. Nineteenth-st.-----18th ward.
60. St. George's Mission -
61. St. George's Miss., Ger.214 E. Fourteenth-st. -----17th ward.
62. St. James' Mission ---E. Eighty-fourth, n. 4th-av.--19th ward.
63. St. Mark's Mission---141 Av. A. -----17th ward.
64. St. Ambrose Church--117 Thompson-st. -----8th ward.
65. Zion Chapel-----557 Third-av. -----21st ward.
66. Holy Trinity Mission-E. Eighty-fourth-st. -----19th ward.
67. Ascension Ch. Miss.--593 Hudson-st. -----9th ward.
68. Ascension Ch. Miss.--W. Forty-third-st., n. 8th-av.-22d ward.
69. Christ Church Miss.--176 W. Eighteenth-st.-----16th ward.
70. Ch. of the Atonement-Madison-av., cor. 28th-st. ----21st ward.
71. City Mission -----304 Mulberry-st. -----15th ward.

72. City Mission-----23 Amity-st.-----15th ward.
 73. Spanish Chapel --- -15 W. Twenty-fifth-st. -----18th ward.
 74. Ascension-----Sixth-av., c. Thirty-fourth-st.-21st ward.
 75. Chapel-----Eleventh-av., n. 52d-st.-----22d ward.
 76. Chapel-----Third-av., n. Sixty-first-st.---19th ward.
 77. Ch. of our Holy Saviour Twenty-fifth, n. Madison-av. -18th ward.
 78. Ch. of the Reformation 158 E. Fiftieth-st. -----19th ward.

ROMAN-CATHOLIC.

1. Annunciation -----W. 131st., n. Broadway -----12th ward.
 2. Assumption -----W. Forty-ninth, n. Ninth-av.-22d ward.
 3. Holy Cross -----335 W. Forty-second-st.-----22d ward.
 4. Immac. Conception --245 E. Fourteenth-st. -----18th ward.
 5. Most Holy Redeemer-165 Third-st. -----17th ward.
 6. Nativity-----46 Second-av.-----17th ward.
 7. St. Alphonso's-----10 Thompson-st. -----8th ward.
 8. St. Andrew's -----Duane st., cor. City-hall-pl.---6th ward.
 9. St. Ann's -----149 Eighth-st. -----15th ward.
 10. St. Boniface -----E. Forty-seventh-st., n. 2d-av. 19th ward.
 11. St. Bridget -----Av. B, cor. Eighth-st. -----11th ward.
 12. St. Columba's -----339 W. Twenty-fifth st. ---16th ward.
 13. St. Francis, German--93 W. Thirty-first-st. -----20th ward.
 14. St. Francis Xavier ---36 W. Sixteenth-st. -----18th ward.
 15. St. Gabriel's-----E. Thirty-seventh, n. 2d-av.--21st ward.
 16. St. James' -----32 James-st. -----4th ward.
 17. St. John Baptist, Ger. 125 W. Thirtieth-st. -----20th ward.
 18. St. John Evangelist --E. Fiftieth-st., n. Fifth-av.---19th ward.
 19. St. Joseph's-----Sixth-av., c. W. Wash'ton-pl. -9th ward.
 20. St. Joseph's, German-W. 125th-st., n. Ninth-av.---12th ward.
 21. St. Lawrence -----E. Eighty-fourth, n. 4th-av.--19th ward.
 22. St. Mary's -----438 Grand-st. -----13th ward.
 23. St. Michael's -----265 W. Thirty-first-st. -----20th ward.
 24. St. Nicholas, German-125 Second-st. -----17th ward.
 25. St. Patrick's Cathedral Mott-st., cor. Prince-----14th ward.
 26. St. Paul's -----W. Fifty-ninth, n. Ninth-av. -22d ward.
 27. St. Paul's -----E. 117th st., n. Fourth-av.---12th ward.
 28. St. Peter's -----Barclay-st., cor. Church-----3d ward.
 29. St. Stephen's-----93 E. Twenty-eighth-st.-----21st ward.
 30. St. Theresa -----Rutgers-st., cor. Henry-----7th ward.
 31. St. Vincent de Paul--127 W. Twenty-third-st. -----16th ward.
 32. Transfiguration-----Mott st., cor. Park -----6th ward.

33. St. Anthony's -----155 Sullivan-st.-----8th ward.
 34. Holy Innocents-----94 W. Thirty-seventh-st.-----20th ward.

UNITARIAN.

1. All Souls' -----Fourth-av., c. E. Twentieth--18th ward.
 2. Messiah -----Park-av., c. Twenty-fourth-st.-21st ward.
 3. Third --- -----W. Fortieth, n. Sixth-av.-----21st ward.

UNIVERSALIST.

1. Second -----E. Eleventh-st., c. Second-av.-17th ward.
 2. Third -----206 Bleecker-st.-----9th ward.
 3. Fourth -----Fifth-av., c. W. Forty-fifth-st.-19th ward.
 4. Sixth-----65 W. Thirty-fifth-st.-----21st ward.
 5. Mission -----Third-av., n. Sixty-first-st.---19th ward.
 6. Mission -----Fourth-av., n. 129th-st.-----12th ward.

MISCELLANEOUS.

1. Christian Israelites---108 First-st.-----17th ward.
 2. German Evan. Ref. --97 Suffolk-st.-----13th ward.
 3. Wesleyan Methodist--235 W. Forty-eighth-st.-----22d ward.
 4. Disciples' -----24 W. Twenty-eighth-st.-----21st ward.
 5. Evangelical -----108 W. Twenty-fourth-st. ---16th ward.
 6. Catholic Apostolic ---128 W. Sixteenth-st.-----16th ward.
 7. Swedenborgian -----68 E. Thirty-fifth-st.-----21st ward.
 8. Messiah, Sec. Advent-7 Seventh-av.-----9th ward.
 9. Moravian Church ---Fourth-av., c. Twenty-third-st. 18th ward.
 10. Moravian Mission ---44 Av. C -----11th ward.
 11. Mariners' Church ---72 Madison-st.-----4th ward.
 12. Welsh Church-----225 E. Thirteenth-st.-----17th ward.
 13. Second Advent -----68 E. Broadway-----7th ward.
 14. Seventh-day Baptist--Second-av., c. E. Eleventh-st.-17th ward.
 15. Ch. of True Believers-Clinton Hall-----15th ward.
 16. 1st Cong'l Methodist-108 W. Twenty-fourth-st. ---16th ward.
 17. McAlister Mission---Cannon-st., near Broome ---13th ward.
 18. Mission -----180 Wooster-st.-----15th ward.
 19. Mission --- -----Broadway, c. Forty-third-st. --22d ward.
 20. Mission -----110 Centre-st.-----6th ward.
 21. Mission -----Third-av., c. Eighty-sixth-st.-19th ward.
 22. Mission -----Third-av., cor. 109th-st.-----12th ward.
 23. Mission -----Fifth-st., cor. First av.-----17th ward.

24. Mission -----Ludlow-st., n. Delancey-----10th ward.
 25. Mission -----218 Ninth-av., c. Twenty-fifth-18th ward.
 26. Mission -----473 Grand-st.-----7th ward.

NEW YORK CITY MISSIONS.

1. 27 Greenwich-street-----First ward.
 2. 74 West Broadway-----Fifth ward.
 3. 122 Leonard-street-----Sixth ward.
 4. 290 Madison-street-----Seventh ward.
 5. 286 Spring-street-----Eighth ward.
 6. 44 Avenue C, German-----Eleventh ward.
 7. 70 Columbia-street-----Thirteenth ward.
 8. 70 Columbia-street, German-----Thirteenth ward.
 9. 212 Grand-street-----Fourteenth ward.
 10. 273 West Twenty-fifth-street-----Sixteenth ward.
 11. 283 Avenue B-----Eighteenth ward.
 12. 176 East Twenty-second-street-----Eighteenth ward.
 13. Lexington-avenue, cor. Forty-sixth-street---Nineteenth ward.
 14. 449 Eleventh-avenue-----Twentieth ward.

NEW YORK PROTESTANT EPISCOPAL CITY
MISSION SOCIETY.

RT. REV. BISHOP POTTER, PRESIDENT.

This Society employs eight missionaries and Bible-readers, who are chiefly engaged in laboring in the public institutions on Blackwell's Island, Ward's Island, Randall's Island, and in the hospitals, prisons, and asylums in the city. The Society has also opened Houses of Refuge at 304 Mulberry-street, and 23 Amity-street, for the lodging of friendless women, for the protection of strangers, and the saving of wanderers.

The receipts of the Society last year were \$23,737 18.

For further information, apply at 304 Mulberry-street.

THE NEW YORK CITY SUNDAY-SCHOOL AND
MISSIONARY SOCIETY OF THE METHODIST
EPISCOPAL CHURCH.

WILLIAM W. CORNELL, PRESIDENT.

The object of this Society is to promote Sabbath-schools and Missions in the city of New York.

The Society has established permanent mission chapels in West Thirty-fifth-street, near Tenth-avenue, and East Sixty-first-street, near Third-avenue, and has leased mission rooms in ten other localities for preaching services and Sabbath-schools.

The pastors engaged in extending this work are Rev. A. K. Sandford, Rev. Wm. Ross, Rev. George Hollis, 225 Chrystie-street, and Rev. David L. Marks, 16 Van-Nest-place, (Charles-street,) to whom application may be made, or to the President at his place of business, 139 Centre-street.

The receipts of the Society last year were \$31,853 72.

NEW YORK DIOCESAN COMMITTEE OF THE AMERICAN CHURCH MISSIONARY SOCIETY,

No. 3 BIBLE HOUSE.

This Committee is actively engaged in establishing mission chapels, and sending out city missionaries to extend the kingdom of Christ in the city, in connection with the Protestant Episcopal church.

CITY MISSIONARY SOCIETY.

This Society is engaged in establishing and sustaining Mission churches in connection with the Protestant Reformed Dutch church.

WM. E. BARNES, SEC'Y, 29 South-st.

GAMALIEL G. SMITH, TREAS., 342 Pearl-st.

THE
MEMBERSHIP OF SOME OF THE CHURCHES.

TAKEN FROM OFFICIAL MINUTES.

BAPTIST.

CHURCHES.	Added on baptism.	Added by letter.	Whole number.	Sab. Sch'l members.
First-----	32	11	741	760
Abyssinian (col'd)-----	59	2	584	--
Zion-----	--	--	--	--
Welsh-----	--	--	--	--
Bethesda-----	54	92	372	212
First Mariners'-----	43	20	512	--
Fifth-avenue-----	25	61	667	248
Bethlehem-----	20	12	123	--
North-----	33	11	364	370
Madison-avenue-----	20	20	587	260
South-----	38	29	350	250
Stanton-street-----	30	18	437	640
Amity-street-----	1	--	135	30
Cannon-street-----	73	5	355	--
Tabernacle-----	46	33	701	850
Laight-street-----	58	3	368	--
Sixth-street-----	69	9	312	461
Murray Hill-----	20	5	162	--
First Church, Harlem-----	64	27	292	557
Calvary-----	8	15	274	170
First German-----	28	8	245	--
Eighty-third-street-----	94	16	226	240
Berean-----	55	17	458	356
Macdougall-street-----	5	4	241	161
Sixteenth-street-----	187	25	751	650
Pilgrim-----	83	8	415	435
Bloomingdale-----	79	31	477	500
Antioch-----	35	13	274	165
German Salem-----	14	26	46	60

Here are 29 churches in all, 27 of them reporting a total membership of 10,469, an average of 387 to each.

PROTESTANT REFORMED DUTCH.

CHURCHES.	Added on examinat'n.	Added on certificate.	Whole num- ber.	Sab. Sch'l members.
Collegiate -----	49	45	1,281	1,272
Thirty-fourth-street-----	41	30	575	640
Greenwich-----	7	9	--	85
Twenty-first-street-----	23	7	355	130
Northwest, Twenty-third-street-	18	5	356	300
German -----	49	1	508	500
Mount Pleasant, Fiftieth-street-	6	--	49	--
Bloomingtondale -----	5	--	80	300
Harlem-----	13	19	359	250
Washington Heights-----	--	--	34	30
Fourth German -----	15	--	148	120
Prospect Hill-----	--	--	84	180
Holland -----	--	--	38	--
South -----	20	14	401	350
Market-street -----	5	5	200	300
Washington-square -----	11	9	484	162
Manhattan -----	14	1	91	150
Union-----	11	25	184	157
German -----	62	105	500	480

. Total, 19 churches, 18 reporting 5,727 communicants—an average of 318 to each.

METHODIST EPISCOPAL.

CHURCHES.	Probation- ers.	Whole No. comm'cants	Sab. Sch'l members.
Duane-----	65	212	295
Greene-street-----	26	421	396
Five Points Mission-----	8	6	255
St. Paul's -----	32	360	477
Swedish Bethel-----	54	90	--
Washington-square -----	39	323	529
Bedford-street -----	67	695	664
Jane-street-----	75	320	855
Central -----	20	260	350
Eighteenth-street -----	56	430	300
Twenty-fourth-street -----	110	262	376
Thirtieth-street-----	103	589	375
Trinity -----	20	280	300
Forty-third-street-----	170	480	536
Eighty-sixth-street -----	40	210	220
Lexington-avenue -----	30	137	231
St. John's -----	19	81	200
Janes Mission -----	42	68	250

METHODIST EPISCOPAL—*Continued.*

CHURCHES.	Probation- ers.	Whole No. comm'cants	Sab. Sch'l members.
Tenth-avenue Mission -----	25	27	175
Central Park Mission -----	--	12	120
Harlem -----	3	227	300
West Harlem -----	17	112	110
John-street -----	14	122	136
Forsyth-street -----	--	201	509
Allen-street -----	70	500	736
Alanson -----	95	298	538
Willett-street -----	50	467	676
Second-street -----	101	440	560
Seventh-street -----	91	425	700
Seventeenth-street -----	18	220	270
Twenty-seventh-street -----	87	416	592
Thirty-seventh-street -----	60	262	450
Beekman Hill -----	36	152	272
Sixty-fifth-street -----	--	--	--
Second-avenue -----	5	87	168

Total, 35 churches, 34 reporting 9,192 communicants—an average of 270 to each.

PRESBYTERIANS, NEW SCHOOL.

CHURCHES.	Added on examinat'n	Added on certificate.	Whole num- ber.	Sab. Sch'l members.
Allen-street -----	29	9	570	1,023
Thirteenth-street -----	27	50	819	655
North -----	28	16	573	--
Seventh -----	32	21	1,023	1,020
West Fiftieth-street -----	27	50	200	200
Mercer-street -----	40	39	541	1,235
Fourteenth-street -----	9	14	493	1,200
Spring-street -----	31	27	620	500
Prince-street -----	17	4	90	35
First German -----	--	--	123	--
First-street -----	--	--	73	--
Park -----	2	44	46	--
Madison-square -----	51	54	1,004	1,407
Covenant -----	10	10	240	130
West -----	32	39	679	475
Eleventh -----	36	57	420	350
Fourth-av. -----	30	67	542	1,168
Central -----	32	18	544	455
French -----	--	--	48	--
Manhattanville -----	1	--	48	130

Total, 20 churches, 8,636 communicants, an average of 431 to each.

PRESBYTERIANS, OLD SCHOOL.

CHURCHES.	Added on examinat'n.	Added on certificate.	Whole num- ber.	Sab. Sch'l members.
Brick -----	17	30	815	90
Rutgers-street -----	3	7	273	150
Madison-avenue -----	--	--	130	--
Chelsea -----	4	2	150	150
Fifth-avenue and Nineteenth-st.	14	16	617	--
German, Madison-street -----	120	--	728	400
Forty-second-street -----	22	24	365	525
Grand-street, Thirty-fourth-st.	18	32	361	58
Sea and Land, Market-street --	24	9	78	140
Alexander, Seventh-avenue ----	26	7	153	186
West Twenty-third-street -----	47	20	342	410
First, Fifth-av. and Eleventh-st.	9	14	207	175
Fifteenth-street -----	9	7	182	1,000
Covenant (col'd) -----	--	--	189	--
Yorkville -----	11	10	172	350
Westminster -----	--	--	150	125
University-place -----	10	10	338	500
Fortieth-street -----	14	15	94	300
Eighty-fourth-street -----	1	2	54	80
Scotch -----	4	--	704	250
Mount Washington -----	--	1	44	26
Lexington-avenue -----	18	14	170	200
Washington Heights -----	5	5	69	203
Canal-street -----	2	4	65	30

Total, 24 churches, 6,450 communicants—an average of 277 to each.

PROTESTANT EPISCOPAL.

CHURCHES.	No. con- firmed dur- ing the year.	Whole No of communi- cants.	Sabbath- school pupils.
1. Advent -----	14	112	137
2. All Angels -----	--	35	70
3. All Saints' -----	76	102	500
4. Annunciation -----	--	--	--
5. Ascension -----	49	650	638
6. Ascension Mission -----	19	50	250
7. Atonement -----	--	43	--
8. Calvary -----	16	406	250
9. Calvary Mission -----	34	250	425
10. Christ -----	79	389	297

PROTESTANT EPISCOPAL—*Continued.*

CHURCHES.	No. con- firmed dur- ing the year.	Whole No. of communi- cants.	Sabbath- school pupils.
11. Christ mission -----	9	53	300
12. Crucifixion -----	--	--	--
13. Du St. Esprit -----	19	--	100
14. Emmanuel -----	--	--	--
15. Epiphany -----	29	260	400
16. Free Church of St. George's Chapel -	9	74	80
17. Our Saviour (Floating Bethel) -----	31	74	100
18. Good Shepherd -----	--	100	150
19. Grace -----	--	--	--
20. Holy Apostles -----	--	--	--
21. Holy Communion -----	--	--	--
22. Holy Comforter -----	--	32	--
23. Holy Evangelists -----	--	--	--
24. Holy Innocents -----	8	95	125
25. Holy Martyrs -----	--	--	--
26. Holy Saviour -----	--	--	--
27. Holy Sepulchre -----	--	--	--
28. Holy Trinity and Mission -----	54	330	400
29. Incarnation -----	29	450	--
30. Intercession -----	16	130	125
31. Mediation -----	15	210	--
32. Nativity -----	10	110	220
33. Reconciliation -----	--	65	400
34. Redeemer (Yorkville) -----	35	101	200
35. Redemption -----	--	--	--
36. Resurrection -----	16	70	78
37. St. Ambrose -----	47	281	350
38. St. Andrew's -----	16	206	300
39. St. Ann's -----	67	367	250
40. St. Barnabas -----	--	--	--
41. St. Bartholomew's -----	--	--	--
42. St. Clement's -----	39	150	100
43. St. George's and Missions -----	117	1,500	1,969
44. St. George the Martyr -----	--	--	--
45. St. James -----	--	--	--
46. St. John Baptist -----	26	--	--
47. St. John Evangelist -----	25	400	425
48. St. Jude's -----	--	--	--
49. St. Luke's -----	33	350	550
50. St. Mark's and Mission -----	78	364	1,100
51. St. Mary's -----	16	101	125
52. St. Matthew's -----	--	--	--
53. St. Matthias' -----	2	52	50
54. St. Michael's -----	35	122	335
55. St. Paul's (Harlem) -----	--	--	--
56. St. Peter's -----	66	500	677
57. St. Philip's (col'd) -----	25	160	50

PROTESTANT EPISCOPAL—*Continued.*

CHURCHES.	No. con- firmed dur- ing the year,	Whole No. of communi- cants.	Sabbath- school pupils.
58. St. Saviour's-----	--	--	--
59. St. Saviour's-----	--	--	--
60. St. Simon's-----	--	--	--
61. St. Stephen's-----	--	60	25
62. St. Thomas'-----	--	--	--
63. St. Timothy's-----	--	--	--
64. Transfiguration-----	46	400	--
65. Trinity-----	282	1,645	1,869
66. St. Paul's Chapel-----			
67. St. John's Chapel-----			
68. Trinity Chapel-----			
69. Zion and Mission-----	51	502	480
70. Grace (Harlem)-----	20	83	290

Total, 70 churches, 42 reporting 11,434 communicants—an average of 272 to each.

GRAND TOTALS.

There are of Protestant churches of all denominations, excluding mission stations, which are not duly incorporated as churches, a total of 216. If we allow to each, as the foregoing statistics will admit, a membership of 300, we have, as the whole number of communicants in the evangelical churches of the city, 64,800.

THE TIME OF SERVICE IN THE CHURCHES.

THE HOURS OF SERVICE. On the Sabbath: 10½ A. M., almost universally; afternoon, 3½ in winter, and 4 in summer; evening, 7½. Week-day evening services, usually, Tuesday and Friday, 8 o'clock.

BAPTIST.

- Rev. John Q. Adams, 63 Morton-st.; Antioch ch., 264 Bleecker-st.
Sabbath services, Morning, Afternoon, and Evening.
- Rev. Thos. D. Anderson, D. D., 768 Third-avenue; First ch., 354 Broome-st. Sabbath services, Morning and Afternoon.
- Rev. Thos. Armitage, D. D., 2 W. Forty-sixth-st.; W. Forty-sixth-st., near Fifth-av. Sabbath services, Morning and Afternoon.
- Rev. J. W. R. Buckland, 173 Seventh-avenue; Calvary ch., 50 W. Twenty-third-st. Sabbath services, Morning and Evening.
- Rev. A. Cleghorn, 126 Christopher-st; North ch., 126 Christopher. Sabbath services, Morning and Afternoon.
- Rev. Sidney A. Corey, 222 E. Thirty-seventh-st.; Lexington-av., near E. Thirty-seventh-st.
- Rev. James Dubois, Sixth-st. ch., 211 Sixth-st.
- Rev. John Dowling, D. D., 6 Ashland-pl.; Berean ch., 35 Downing-st. Sabbath services, Morning and Evening.
- Rev. E. K. Fuller, 117 Henry-st.; Cannon-st. ch., 317 Madison-st.
- Rev. Chas. Gayer, 303 W. Forty-fifth-st.; Bethlehem ch., 395 W. Forty-fifth-st.
- Rev. James C. Gobel, Ebenezer ch., 154 W. Thirty-sixth-st.
- Rev. J. L. Hodge, D. D., First Mariners' ch., Oliver-st., cor. Henry.
- Rev. J. S. Holme, D. D.; Third-av. and Fifty-second-st. Sabbath services, Morning and Evening.
- Rev. S. J. Knapp, South ch., 147 W. Twenty-fifth-st.
- Rev. Halsey W. Knapp, Pilgrim ch., Thirty-third-st., n. Eighth-av.
- Rev. J. R. Kendrick, D. D., 111 E. Seventeenth-st.; Tabernacle ch., 162 Second-av. Sabbath services, Morning and Afternoon.
- Rev. Elijah Lucas, Harlem; Harlem ch., Fifth-av., near 126th-st.

- Rev. W. S. Mikels, D. D., 174 W. Seventeenth-st. ; Sixteenth-st. ch., 257 W. Sixteenth-st. Sabbath services, Morning and Evening.
- Rev. C. C. Norton, 207 Eighty-second-st., near Third-av. ; Yorkville ch., Eighty-third-st., near Second-av.
- Rev. J. P. Nutting, 218 W. Twenty-second-st. ; Freewill ch., 74 W. Seventeenth-st.
- Rev. W. H. Pendleton, 149 W. Fifty-fourth-st. ; Bethesda ch., Fifty-third-st., n. Seventh-av.
- Rev. J. T. Raymond, (col'd,) Zion ch., (col'd.)
- Rev. Wm. Reid, Macdougall-st. ch., 24 Macdougall-st.
- Rev. C. Rhodes, 84 First-st. ; Stanton-st. ch., 36 Stanton-st.
- Rev. H. M. Schaffer ; First German ch.
- Rev. W. Spelman, (col'd,) 70 Grove-st. ; Abyssinian ch., (col'd,) 166 Waverley-pl.
- Bloomingdale ch., 220 W. Forty-second-st. Sabbath services, Morning and Evening.
- Rev. Henry G. Weston, D. D., 683 Lexington-av. ; Madison-av. ch., c. E. Thirty-first-st. Sabbath services, Morning and Evening.

CONGREGATIONAL.

- Rev. Lyman Abbott, 203 W. Thirty-fourth-st. ; New England ch., 10 W. Forty-first-st. Sabbath services, Morning and Evening.
- Rev. S. A. Baker, 231 W. Forty-eighth-st. ; ch. of the Pilgrims, 235 W. Forty-eighth-st. Sabbath services, Morning and Evening.
- Rev. S. Bourne, Harlem ; Harlem Congregational ch., Second-av., cor. 125th-st.
- Rev. Geo. B. Cheever, D. D., 29 Irving-pl. ; ch. of the Puritans. Sabbath services, Morning and Evening.
- Rev. Evan Griffiths, 171 Eighth-av. ; Welsh ch., 33 E. Eleventh-st.
- Rev. C. B. Ray, (col'd,) 81 W. Thirty-eighth-st. ; Bethesda ch., (col'd,) 681 Sixth-av.
- Rev. J. P. Thompson, D. D., 32 W. Thirty-sixth-st. ; Tabernacle ch., Sixth-av., cor. Thirty-fourth-st. Sabbath services, Morning and Evening.

LUTHERAN.

- Rev. G. W. Drees, 99 W. Forty-first-st. ; St. Luke's ch., 208 W. Forty-third-st.
- Rev. Julius Ehrhart, Harlem ; St. Paul's, Harlem.
- Rev. F. W. Foehlinger, 303 Ninth-st. ; Av. B ch., cor. Ninth-st.

- Rev. F. W. Geissenhainer, D. D., 76 E. Fourteenth-st.; St. Paul's ch., 226 Sixth-av.
- Rev. A. H. M. Held, 59 Grove-st.; St. John's ch., 81 Christopher-st.
- Rev. C. Henicke, 123 E. Fiftieth-st.; St. Peter's ch., 125 E. Fiftieth-st.
- Rev. G. J. Rents, Fourth-av., near Eighty-ninth-st.; Yorkville ch., Eighty-seventh-st., near Fourth-av.
- Rev. C. F. E. Stohlman, D. D., 167 Mott-st.; St. Matthew's ch., Walker-st., near Broadway.
- Rev. A. C. Wedekind, 154 E. Nineteenth-st.; St. James' ch., 103 E. Fifteenth-st.

METHODIST EPISCOPAL.

Sabbath services in all the Methodist churches, morning and evening.

- Rev. F. Brown, 12 Forsyth-st.; Forsyth-st. ch., 10 Forsyth-st.
- Rev. S. D. Brown, 47 Morton-st.; Bedford-st. ch., cor. Morton-st.
- Rev. F. Bottome, 915 Second-av.; Beekman-hill ch., Fiftieth-st., near Second-av.
- Rev. T. W. Chadwick, 317 W. Twenty-eighth-st.; Twenty-fourth-st. ch., near Ninth-av.
- Rev. W. P. Corbit, 168 E. Seventeenth-st.; Hedding ch., 170 E. Seventeenth-st.
- Rev. T. M. Curry, 11 Jane-st.; Jane-st. ch., 13 Jane-st.
- Rev. W. H. De Puy, 200 Mulberry-st.; John-st. ch., 44 John-st.
- Rev. G. C. Ezray, 137 W. Fifty-third-st.; St. John's ch., 133 W. Fifty-third-st.
- Rev. W. H. Evans, 145 E. Fiftieth-second-st.; Lexington-av. ch., cor. Fifty-second-st.
- Rev. A. C. Foss, 203 W. Thirtieth-st.; Thirtieth-st. ch., 207 W. Thirtieth-st.
- Rev. C. D. Foss, 289 Fourth-av.; St. Paul's ch., Fourth-av., cor. E. Twenty-second-st.
- Rev. R. S. Fester, D. D., 80 Macdougall-st.; Washington-sq. ch., Fourth-st., near Sixth-av.
- Rev. J. E. Gorse, Eighty-sixth-st.; Yorkville ch., Eighty-sixth-st., near Fourth-av.
- Rev. G. S. Hare, D. D., 46 Seventh-av.; Central ch., 44 Seventh-av.
- Rev. C. E. Harris, 155 Clinton-st.; Alanson ch., 52 Norfolk-st.
- Rev. O. G. Hedstrom, —; Swedish Bethel, pier 11 North River.
- Rev. T. F. Hildreth, 263 W. Thirty-fourth-st.; Trinity ch., 248 W. Thirty-fourth-st.
- Rev. J. W. Horne, 5 Willett-st.; Willett-st. ch., 7 Willett-st.

- Rev. J. S. Inskip, 57 Greene-st.; Greene-st. ch., 59 Greene-st.
 Rev. L. H. King, 191 W. Eighteenth-st.; Eighteenth-st. ch., 193 W. Eighteenth-st.
 Rev. J. L. G. McKown, 127th-st., near Third-av.; Harlem ch., 125th-st., near Third-av.
 Rev. W. McAlister, 229 E. Thirty-seventh-st.; Thirty-seventh-st. ch., 129 E. Thirty-seventh-st.
 Rev. John Parker, Second-av., Harlem: Second-av. ch., c. 119th-st.
 Rev. J. L. Peck, 280 Second-st.; Second-st. ch., 276 Second-st.
 Rev. R. C. Putney, 249 W. Forty-third-st.; Forty-third-st. ch., 177 W. Forty-third-st.
 Rev. J. F. Richmond, 459 W. Forty-fourth-st.; Janes Mission, 461 W. Forty-fourth-st.
 Rev. T. B. Smith, 570 Broome-st.; Duane ch., 294 Hudson-st.
 Rev. C. B. Sing, 219 E. Twenty-seventh-st.; Rose Hill ch., 125 E. Twenty-seventh-st.
 Rev. V. N. Traver; W. Harlem ch., 125th-st., near Sixth-av.
 Rev. J. C. Washburn, Third-av.; Central Park Mission, Third-av., near E. Seventieth-st.
 Rev. L. S. Weed, 128 Allen-st.; Allen-st. ch., 126 Allen-st.
 Rev. G. W. Woodruff, 22 Seventh-st.; Seventh-st. ch., 24 Seventh-st.

For the New York Sabbath-school and City Missionary stations, the following preachers were appointed: Rev. D. L. Marks, Rev. A. K. Sanford, Rev. George Hollis, Rev. W. Ross.

For the Ladies' Meth. Epis. Mission, Five Points: Rev. J. N. Shaffer, Rev. G. W. Knapp.

For the City Prison: Rev. C. Battersby.

PRESBYTERIAN (OLD SCHOOL).

- Rev. S. D. Alexander, D. D., 90 E. Twenty-second-st.; Fifteenth-st. ch., near Third-av. Sabbath services, Morning and Afternoon.
 Rev. J. E. Annan, 205 Lex'ton-av.; Fortieth-st., near Lex'ton-av. Sabbath services, Morning and Evening.
 Rev. G. D. Archibald, D. D.; Westminster ch., 151 W. Twenty-second-st. Sabbath services, Morning and Afternoon.
 — Yorkville, 147 E. Eighty-sixth-st.
 — W. Twenty-third-st., near Seventh-av. Sabbath services, Morning and Afternoon.
 Rev. R. W. Dickinson, D. D., Mt. Washington; Mt. Washington ch.
 Rev. J. M. Krebs, D. D., 88 E. Thirty-ninth-st.; Rutgers ch., Madi-

son-av., cor. Twenty-ninth-st. Sabbath services, Morning and Afternoon.

Rev. A. H. Kellogg, 105 Tenth-st.; University-pl. ch., near Tenth-st. Sabbath services, Morning and Afternoon.

Rev. J. McElroy, D. D., 118 W. Twelfth-st.; Scotch ch., 53 W. Fourteenth-st. Sabbath services, Morning and Afternoon.

Rev. J. O. Murray, 258 Lexington-av.; Brick ch., Fifth-av., cor. Thirty-seventh-st. Sabbath services, Morning and Afternoon.

Rev. Mr. Nightingale; Irish ch., 17 Greene-st.

Rev. Francis L. Patton, —; Eighty-fourth-st. ch., near Bloomingdale-road.

Rev. Wm. M. Paxton, D. D., 49 W. Eleventh-st.; First ch., Fifth-av., cor. Eleventh-st. Sabbath services, Morning and Evening. — Fifth-av. ch., cor. Nineteenth-st. Sabbath services, Morning and Afternoon.

Rev. Morse Rowell, 313 Sixth-av.; Alexander ch., 107 Seventh-av.

Rev. Joseph Sanderson, 136 E. Forty-sixth-st.; Lexington-av. ch., cor. E. Forty-sixth-st. Sabbath services, Morning and Evening.

Rev. Wm. A. Scott, D. D., 208 W. Forty-second-st.; Forty-second-st. ch., 233 W. Forty-second-st. Sabbath services, Morning and Evening.

Rev. R. C. Shimeall, 371 W. Thirty-fifth-st.; Mission ch., Sixth-av., cor. Thirty-fourth-st.

Rev. Edward D. Smith, D. D., 453 W. Twenty-first-st.; Chelsea ch., 353 W. Twenty-second-st. Sabbath services, Morning and Afternoon.

Rev. Gardiner Spring, D. D., 6 E. Thirty-seventh-st.; Brick ch., Fifth-av., cor. Thirty-seventh-st. Sabbath services, Morning and Afternoon.

Rev. Frederick Steins, 257 Henry-st.; German ch., 290 Madison-st.

Rev. C. A. Stoddard, Washington Heights; Washington Heights ch.

Rev. M. C. Sutphen, 177 Seventh-av.; Scottish ch., 53 W. Fourteenth-st. Sabbath services, Morning and Afternoon.

Rev. John Thomson, D. D., 116 W. Thirty-seventh-st.; Fourth ch., Thirty-fourth-st., near Broadway.

Rev. H. M. Wilson, (col'd,) 66 Sullivan-st.; Covenant ch., (col'd,) 231 W. Sixteenth-st.

PRESBYTERIAN, (NEW SCHOOL.)

- Rev. Wm. Adams, D. D., 8 E. Twenty-fourth-st.; Madison-sq. ch., cor. E. Twenty-fourth-st. Sabbath services, Morning and Afternoon, and usually the second Sabbath evening in each month.
- Rev. R. R. Booth, D. D., 77 Ninth-st.; Mercer-st. ch., n. Eighth-st., Sabbath services, Morning and Afternoon.
- Rev. S. D. Burchard, D. D., 45 Seventh-av.; Thirteenth-st. ch., near Seventh-av. Sabbath services, Morning and Evening.
- Rev. H. Crosby, D. D., 306 Second-av.; Fourth-av. ch., cor. Twenty-second-st. Sabbath services, Morning and Afternoon.
- Rev. T. M. Dawson, 205 Henry-st.; Seventh ch., Broome-st., cor. Ridge. Sabbath services, Morning and Evening.
- Rev. James B. Dunn, 186 W. Nineteenth-st.; Central ch., W. Fiftieth-st., near Eighth-av. Sabbath services, Morning and Evening.
- Rev. Ezra H. Gillett, D. D., Harlem; Harlem ch.
- Rev. T. S. Hastings, D. D., 84 W. Forty-fifth-st.; West ch., Forty-second-st., near Fifth-av. Sabbath services, Morning and Afternoon.
- Rev. E. W. Hitchcock, 96 E. Fifteenth-st.; Fourteenth-st. ch., cor. Second-av. Sabbath services, Morning and Evening.
- Rev. A. E. Kittredge, 15 W. Twenty-fourth-st.; Eleventh ch., Fifty-fifth-st., near Lexington-av. Sabbath services, Morning and Evening.
- Rev. Mousseau des Islets; French Evangelical ch., 9 University-place.
- Prince-st. ch., (col'd,) cor. Marion-st.
- Rev. W. W. Newell, D. D., 66 Second-av.; Allen-st. ch., 61 Allen-st. Sabbath services, Morning and Evening.
- Rev. C. H. Payson, 110 East Thirty-eighth-st.; Mission ch., 419 Third-av.
- Rev. E. P. Payson, 108 E. Twenty-fourth-st.; Mission, 176 E. Twenty-second-st.
- Rev. G. L. Prentiss, D. D., E. Thirty-fifth-st., near Fourth-av.; Covenant ch., Park-av., cor. Thirty-fifth-st. Sabbath services, Morning and Afternoon.
- Rev. Thomas Street, 9 Lamartine-pl.; North ch., Ninth-av., cor. Thirty-first-st. Sabbath services, Morning and Evening.
- Rev. James D. Wilson, 137 W. Thirteenth-st.; Spring-st. ch., 246 Spring-st. Sabbath services, Morning and Afternoon.

PROTESTANT REFORMED DUTCH.

- Rev. Talbot W. Chambers, D. D., 70 W. Thirty-sixth-st. ; Collegiate ch., W. Forty-eighth-st., near Fifth-av. Sabbath services, Morning and Afternoon.
- Rev. W. H. Clark, 160 W. Twenty-ninth-st. ; Collegiate Mission, 160 W. Twenty-ninth-st.
- Rev. Thomas De Witt, D. D., 123 Ninth-st. ; Collegiate ch., Fifth-av., cor. Twenty-ninth-st. Sabbath services, Morning, Afternoon, and Evening.
- Rev. Joseph T. Duryea, 99 E. Twenty-seventh-st. ; Collegiate ch., Lafayette-pl. Sabbath services, Morning and Afternoon.
- Rev. Henry A. Friedel, 127 Norfolk-st. ; German Reformed ch., 129 Norfolk-st.
- Rev. Hervey D. Ganse, 358 W. Twenty-second-st. ; Northwest ch., 145 W. Twenty-third-st. Sabbath services, Morning and Afternoon.
- Rev. Julius W. Geyer, 215 Forsyth-st. ; Ger. Evangelical ch., 141 E. Houston-st.
- Rev. Isaac S. Hartley, 25 Sixth-av. . Union ch., 25 Sixth-av. Sabbath services, Morning and Evening.
- Rev. M. S. Hutton, D. D., 115 Ninth-st. ; Washington-sq. ch., Wooster-st. Sabbath services, Morning and Afternoon.
- Rev. J. S. Lord, D. D., 122d-st. ; Harlem ch., Third-av., cor. 121st-st.
- Rev. J. H. Oerter, 143 W. Thirty-first-st. ; Fourth German ch., 160 W. Twenty-ninth-st.
- Rev. D. M. L. Quackinbush, D. D., Eighty-sixth-st., near Third av. ; Prospect-hill ch., Eighty-fifth-st., near Second-av.
- Rev. E. P. Rogers, D. D., 40 W. Twenty-seventh-st. ; South ch., Fifth-av., cor. Twenty-first-st. Sabbath services, Morning and Evening.
- Rev. Peter Stryker, D. D., 205 W. Thirty-first-st. ; Thirty-fourth-st. ch., near Eighth-av. Sabbath services, Morning and Evening.
- Rev. Alexander R. Thompson, D. D., 219 W. Twenty-first-st. ; Twenty-first-st. ch., 47 W. Twenty-first-st. Sabbath services, Morning and Evening.
- Rev. Enoch Van Aken, 207 W. Twenty-seventh-st. ; Bloomingdale ch., Broadway, cor. Sixty-eighth-st.
- Rev. Thomas E. Vermilye, 50 E. Forty-ninth-st. ; Collegiate ch. Fulton-st., cor. William.

Rev. Ebenezer Wiggins, D. D., 408 Fifth-st. ; Manhattan ch., 71 Av. B.

NOTE. The Collegiate churches are served by Rev. Drs. De Witt, Vermilye, Chambers, and Duryea, in rotation.

PROTESTANT EPISCOPAL.

Rev. C. C. Adams, Manhattanville ; St. Mary's ch., Manhattanville.

Rev. Alfred B. Beach, D. D., 228 W. Twentieth-st. ; St. Peter's ch., 224 W. Twentieth-st. Sabbath services, Morning and Afternoon.

Rev. W. Percy Brown, 150 E. Thirty-first-st. ; Reconciliation ch., 150 E. Thirty-first-st.

Rev. Caleb Clapp, 225 Sixth-st. ; ch. of the Nativity, 70 Av. C.

Rev. Samuel Cooke, D. D., 60 W. Eleventh-st. ; St. Bartholomew's ch., Lafayette-place. Sabbath services, Morning and Afternoon.

Rev. S. J. Corneille, 39 Gouverneur-st. ; All Saints' ch., 286 Henry-st. Sabbath services, Morning and Evening.

Rev. N. E. Cornwall, D. D., 508 Seventh-av. ; St. Matthias' ch., Broadway cor. Thirty-second-st.

Rev. Morgan Dix, D. D., 7 Church-st. ; Trinity ch., Broadway. Sabbath services, Morning and Afternoon.

Rev. G. B. Draper, Harlem ; St. Andrew's ch., Harlem.

Rev. C. R. Duffie, D. D., 233 Lexington-av. ; St. John Baptist ch., 231 Lexington-av. Sabbath services, Morning and Afternoon.

Rev. Wm. Dymond, Eighty-fourth-st. ; Mission, Eighty-fourth-st., n. Fourth-av.

Rev. T. A. Eaton, 106 W. Thirteenth-st. ; St. Clement's ch., 108 Amity-st. Sabbath services, Morning and Evening.

Rev. J. I. Elmendorf, 98 W. Thirty-seventh-st. ; Holy Innocents' ch., (temporarily,) Sixth-av. cor. Forty-second-st.

Rev. F. C. Ewer, 137 W. Forty-second-st. ; Christ ch., Fifth-av. cor. Thirty-fifth-st. Sabbath services, Morning and Afternoon.

Rev. E. O. Flagg, 67 W. Thirty-fifth-st. ; Resurrection ch., (temporarily,) Sixth-av., n. Forty-sixth-st.

Rev. T. Gallaudet, D. D., 9 W. Eighteenth-st. ; St. Ann's ch., 7 W. Eighteenth-st. Sabbath services, Morning and Evening, and also an Afternoon service for Deaf Mutes.

Rev. G. J. Geer, D. D., 229 W. Twenty-seventh-st. ; St. Timothy's ch., W. Fifty-seventh-st. near Eighth-av.

Rev. B. J. Haight, D. D., 56 W. Twenty-sixth-st. ; St. Paul's ch.,

- Broadway, cor. Vesey-st. Sabbath services, morning and Evening.
- Rev. A. B. Hart, 762 Broadway; Advent ch., 53 West Forty-sixth-st.
- Rev. E. Y. Higbee, D. D., 42 E. Thirtieth-st.; Trinity chapel, 15 W. Twenty-fifth-st. Sabbath services, Morning and Afternoon, and from November to May in the Evening also.
- Rev. G. H. Houghton, D. D., 1 E. Twenty-ninth-st.; Transfiguration ch., E. Twenty-ninth-st. near Fifth-av.
- Rev. R. S. Howland, D. D., 409 W. Twenty-third-st.; Holy Apostles' ch., Ninth-av. cor. Twenty-eighth-st.
- Rev. Ralph Hoyt, E. Fifty-fourth-st.; Good Shepherd ch., Fifty-fourth-st., near Second-av.
- Rev. Theodore Irving, D. D., 32 West Thirty-second-st.; Mediator ch., Lexington-av. cor. Thirtieth-st. Sabbath services, Morning and Evening.
- Rev. Thomas A. Jaggar, 137 W. Forty-eighth-st.; Anthon Memorial ch., Forty-eighth-st., near Seventh-av. Sabbath services, Morning and Evening.
- Rev. James Millet, 109 Second-av.; ch. of the Holy Martyrs, 39 Forsyth-st.
- Rev. Henry E. Montgomery, D. D., 115 E. Thirtieth-st.; ch. of the Incarnation, Madison-av. cor. Thirty-fifth-st. Sabbath services, Morning and Evening.
- Rev. Wm. F. Morgan, D. D., Astoria; St. Thomas' ch., Fifth-av., cor. Fifty-third-st. Sabbath services, Morning and Afternoon.
- Rev. C. W. Morrill, 99 E. Forty-ninth-st.; St. Alban's ch., Lexington-av., c. Forty-seventh-st. Sabbath services, Morning and Evening.
- Rev. T. M. C. Peters, D. D., Broadway, cor. 101st-st.; St. Michael's ch., Broadway, cor. Ninety-ninth-st.
- Rev. C. E. Phelps, W. Eighty-first-st.; All Angels' ch., Eighty-first-st. near Eleventh-av.
- Rev. Joseph H. Price, D. D., 109 W. Twenty-second-st.; St. Stephen's ch., 30 W. Twenty-second-st. Sabbath services, Morning and Evening.
- Rev. F. Sill, 25 Vandam-st.; St. Ambrose ch., 117 Thompson-st.
- Rev. John Cotton Smith, D. D., 7 W. Tenth-st.; Ascension ch., Fifth-av., cor. W. Tenth-st. Sabbath services, Morning and Afternoon.
- Rev. J. H. Smith, 156th-st.; Intercession ch., 154th-st., cor. Tenth-av.

- Rev. J. W. Shackelford, E. Eightieth-st., near Second-av. ; ch. of the Redeemer.
- Rev. W. T. Sabine, 46 W. Twenty-third-st. ; ch. of the Atonement, Madison-av., cor. Twenty-eighth-st. Sabbath services, Morn- and Evening.
- Rev. Horatio Southgate, D. D., Astoria ; Zion ch., Madison-av., cor. Thirty-eighth-st. Sabbath services, Morning and Afternoon.
- Rev. T. H. Taylor, D. D., 804 Broadway ; Grace ch., 800 Broadway, cor. Tenth-st.
- Rev. I. H. Tuttle, 477 Hudson-st. ; St. Luke's ch., 483 Hudson-st. Sabbath services, morning and afternoon.
- Rev. Stephen H. Tyng, D. D., 213 E. Sixteenth-st. ; St. George's ch., Rutherford-pl. Sabbath services, Morning and Afternoon, and also the first Sabbath Evening in every month.
- Rev. Stephen H. Tyng, jr., 117 W. Forty-third-st. ; Holy Trinity ch., Madison-av., cor. E. Forty-second-st. Sabbath services, Morning and Afternoon, and also the first Sabbath evening in every month.
- Rev. A. Verren, D. D., 28 W. Twenty-second-st. ; Du St. Esprit ch., (French,) 30 W. Twenty-second-st.
- Rev. A. H. Vinton, D. D., 156 Second-av. ; St. Mark's ch., Stuy- vesant-st. Sabbath services, Morning and Afternoon.
- Rev. Francis Vinton, D. D., Brooklyn ; St. Paul's ch., Broadway cor. Vesey-st. Sabbath services, Morning and Evening.
- Rev. E. A. Washburn, D. D., 64 E. Twenty-first-st. ; Calvary ch., Fourth-av., cor. Twenty-first-st. Sabbath services, Morning and Afternoon.
- Rev. S. H. Weston, D. D., 409 W. Twenty-third-st. ; St. John's ch., 46 Varick-st. Sabbath services, Morning and Afternoon.

MISSION STATIONS.

WARD.	STREET.	SABBATH SERVICES.			WEEK-DAY EVENING SERVICES.					SABBATH SCHOOL.	
		Morning.	Afternoon.	Evening.	Monday.	Tuesday.	Wednesday.	Thursday.	Friday.	Morning.	Afternoon.
1	27 Greenwich -----	10 $\frac{1}{2}$	---	7 $\frac{1}{2}$	---	---	---	7 $\frac{1}{2}$	---	9	2
5	74 West Broadway -----	---	---	6	---	---	---	7 $\frac{1}{2}$	---	---	---
6	122 Leonard -----	---	---	7 $\frac{1}{2}$	---	---	---	7 $\frac{1}{2}$	---	---	---
7	290 Madison c. Montgom'y -----	---	---	7 $\frac{1}{2}$	---	---	---	---	---	---	---
8	286 Spring-street -----	---	3 $\frac{1}{2}$	---	---	---	---	3 $\frac{1}{2}$	---	---	---
11	44 Av. C, c. 4th, German -----	10 $\frac{1}{2}$	---	7 $\frac{1}{2}$	---	7 $\frac{1}{2}$	---	---	7 $\frac{1}{2}$	9	---
13	70 Columbia -----	---	3 $\frac{1}{2}$	7 $\frac{1}{2}$	---	---	7 $\frac{1}{2}$	---	---	---	---
13	70 Columbia, German -----	---	---	---	---	---	---	7 $\frac{1}{2}$	---	---	---
14	212 Grand-street -----	---	3	7 $\frac{1}{2}$	---	---	7 $\frac{1}{2}$	---	---	---	---
16	273 W. 25th-st., c. 8th-av. -----	---	---	7 $\frac{1}{2}$	---	---	---	7 $\frac{1}{2}$	---	---	---
18	283 Av. B -----	---	---	---	---	---	7 $\frac{1}{2}$	---	---	---	---
18	176 E. 22d-st., n. 1st-av. -----	---	---	7 $\frac{1}{2}$	---	---	---	7 $\frac{1}{2}$	---	---	---
20	449 Eleventh-av. -----	---	3 $\frac{1}{2}$	---	---	---	---	7 $\frac{1}{2}$	---	---	---

The hour for evening service is 7 $\frac{1}{2}$ in Winter, and 8 in Summer.

At the First Ward Mission, 27 Greenwich-street, there is a Sabbath afternoon service for seamen, and also a daily reading-room, under the auspices of the New York Port Society.

At the Sixteenth Ward Mission, 273 West Twenty-fifth-street, there is a Sabbath-school at 2 p. m., conducted by the Twenty-third-street Presbyterian church, and also a daily Industrial School, by the American Female Guardian Society.

At the Hall, 147 Fifth-street, corner First-avenue, there is a Mission Sabbath-school, in charge of members of the Fourth-avenue Presbyterian church and others, at 2 $\frac{1}{2}$ p. m.

In addition to the foregoing Mission Meetings, there are services held every week in thirty or more rooms in tenant-houses, hospitals, homes, etc.

The Directors would cordially invite their friends and the Christian public generally, to visit these Stations as often as possible.

MISSIONARIES.

1. Rev. George Hatt -----150 Nassau-st., 1st and 2d wards.
2. Mr. Henry F. Stanly-----27 Greenwich-st., 1st and 2d wards.
3. Mr. John Love -----15 Renwick-st., 3d and 5th wards.
4. Mr. Henry Whittlesey ----11 Rutgers-st., 4th ward.
5. Rev. Charles Battersby----122 Leonard-st., 6th ward.
6. Mr. Jason L. Burdick ----122 Leonard-st., 6th ward.
7. Mr. Jonathan B. Horton --59 Montgomery-st., 7th ward.
8. Rev. Zenas P. Wilds-----159 Varick-st., 8th ward.
9. Rev. John H. Meacham ---593 Hudson-st., 9th ward.
10. Rev. Richard Parker-----645 Hudson-st., 9th ward.
11. Rev. Joseph P. Lestrade---13 Rutgers-place, 10th ward.
12. Mr. John H. Bulen -----333 E. Fourth st., 11th ward,
13. Rev. Marinus Willett-----Washington Heights, 12th ward.
14. Mr. James W. Bishop ----70 Columbia-st., 13th ward.
15. Mr. James W. Monroe ----212 Grand-st., 14th ward.
16. Rev. Alfred C. Roe-----229 Thompson-st., 15th ward.
17. Rev. Alexander Potter ---212 Grand st., 14th ward.
18. Rev. John P. Betker-----523 W. 23d-st., 16th ward.
19. Mr. John Ruston -----114 E. 22d-st., 18th ward.
20. Rev. Edward P. Payson ---108 E. Twenty-fourth-st., 18th ward.
21. Rev. Enoch Mack-----Post-office, Station L, 19th ward.
22. Rev. John W. Martin ----106 E. 40th-st., 19th ward.
23. Rev. Richard Hayter-----444 W. 34th-st., 20th ward.
24. Mr. Peleg A. Spencer-----320 E. 51st-st., 21st ward.
25. Rev. Calvin Lathrop-----223 W. Forty-sixth-st., 22d ward.
26. Rev. Abraham Berky ----23 Seventh-st., Germans.
27. Mr. William Roth -----98½ First st., Germans.
28. Rev. Henry A. Friedel ---127 Norfolk-st., Germans.
29. Rev. Ola Helland-----Bethel, Pier 11, North river, seamen.
30. Mr. Henry Veshlage-----255 Rivington-st., Ger. immigrants.
31. Mr. Gideon R. Lederer ---331 E. Thirteenth-st., Jews.
32. Rev. George Dubois -----19 W. Thirty-eighth-st., French.
33. Rev. Martin A. Erdman ---192 Seventh-st., Moravian.
34. Mrs. Elmore -----327 Madison-st., 7th ward.
35. Mrs. Whitaker -----13½ Leroy-st., 8th ward.
36. Mrs. Hughes -----147 West Houston, 8th ward.
37. Miss Smith -----73 Suffolk-st., 10th ward.
38. Mrs. Mix -----348 Third-st., 11th ward.
39. Miss Wait -----175 Sixth-st., 13th ward.

- 40. Miss Quarmby-----16 Clarke-st., 14th ward.
- 41. Mrs. Kinne -----18 Minetta-st., 15th ward.
- 42. Mrs. Furman -----139 Laurens-st.
- 43. Miss Rees-----170 East 34th-st., 18th ward.
- 44. Miss Williams-----136 E. Forty-sixth-st., 19th ward.
- 45. Mrs. Fanning -----212 West 36th-st., 20th ward.
- 46. Mrs. Whitelaw-----250 E. Thirty-second-st., 21st ward.

NEW YORK STATE CENSUS.

NATIVITIES OF CITY POPULATION BY WARDS.

WARDS.	1855.			1865.		
	Born in the United States.	Born in foreign countries.	Total.	Born in the United States.	Born in foreign countries.	Total.
First -----	4,267	8,500	12,767	4,193	5,613	9,852
Second -----	1,273	1,800	3,073	593	600	1,194
Third -----	4,113	3,600	7,713	1,451	1,885	3,367
Fourth -----	6,860	15,000	21,860	7,533	9,761	17,352
Fifth -----	11,322	10,000	21,322	9,353	8,798	18,205
Sixth -----	7,734	15,500	23,234	8,294	10,970	19,754
Seventh -----	16,923	17,500	34,423	18,904	18,054	36,962
Eighth -----	19,175	16,500	35,675	18,254	11,458	30,098
Ninth -----	26,317	13,500	39,817	26,602	11,697	38,504
Tenth -----	12,945	13,500	26,445	15,644	15,750	31,537
Eleventh -----	23,481	30,500	53,981	31,260	27,488	58,953
Twelfth -----	8,359	10,500	18,859	18,585	9,360	28,259
Thirteenth -----	14,040	12,500	26,540	15,306	10,908	26,388
Fourteenth -----	10,551	13,500	24,051	10,827	11,725	23,382
Fifteenth -----	14,098	10,500	24,598	15,212	10,359	25,572
Sixteenth -----	21,536	17,500	39,036	28,304	16,323	41,972
Seventeenth -----	24,610	33,500	58,110	32,900	37,201	79,563
Eighteenth -----	18,537	20,500	39,037	25,801	21,371	47,613
Nineteenth -----	8,242	9,500	17,742	23,477	16,127	39,945
Twentieth -----	22,540	24,500	47,040	36,615	25,075	61,884
Twenty-first -----	16,398	11,500	27,898	23,397	14,944	38,669
Twenty-second -----	10,400	12,189	22,589	30,807	16,311	47,361
	303,721	326,089	629,810	402,312	313,477	726,386

POPULATION OF THE CITY

ABOVE AND BELOW FOURTEENTH-ST., AT DIFFERENT PERIODS.

	1840.	1845.	1850.	1855.	1860.	1865.
Above 14th-st. ---	33,811	54,728	113,513	212,334	344,462	305,703
Below 14th-st. ---	278,899	316,495	402,034	417,476	469,792	420,683
Total -----	312,710	371,223	515,547	629,810	814,254	726,386

STATISTICS OF THE NEW YORK CHURCHES,

FROM THE STATE CENSUS OF 1865.

DENOMINATION.	Number of churches.	Value of churches.	No. capable of being seated.	Usual number attending.	Number of communicants.	Salary of clergy.
Baptist -----	24	885,000	18,100	10,850	7,610	38,800
O. S. Baptist-----	1	-----	-----	-----	-----	-----
Catholic Apostolic-	1	12,000	200	150	75	2,000
Church of Messiah-	1	50,000	400	300	100	2,500
Christian Israelite-	1	10,300	150	100	-----	-----
Congregational----	5	422,000	4,000	2,625	1,092	11,100
Evangelical -----	1	20,000	600	250	-----	1,000
Evan. Lutheran----	7	125,000	5,250	2,850	1,790	7,100
Friends -----	2	80,000	9,000	5,500	375	-----
German Reformed-	1	71,000	1,000	600	200	1,100
Jews -----	14	434,000	7,675	2,815	2,019	19,300
Meth. Episcopal --	35	933,500	24,350	22,180	8,773	49,000
African Meth. Epis.	4	119,200	2,420	1,840	965	8,550
Meth. Protestant --	1	18,000	500	600	190	1,400
Presbyterian-----	44	1,620,000	22,800	13,735	7,080	84,850
United Presb'n ---	5	98,000	3,375	1,850	1,265	8,200
Prot. Episcopal ---	56	4,499,500	40,750	28,613	11,222	159,050
Prot. Ref. Dutch--	17	1,763,000	17,820	8,050	3,908	56,400
Roman-catholic--	30	1,482,000	31,800	54,170	30,495	32,900
Union -----	2	5,000	1,340	675	940	3,250
Unitarian -----	2	140,000	1,900	1,300	125	5,000
Universalist -----	2	57,000	2,900	2,250	400	12,900
Totals-----	258	12,844,500	196,330	160,303	78,624	504,400

THE CHURCHES OF THE CITY

ABOVE AND BELOW FOURTEENTH-ST., AT DIFFERENT PERIODS.

	1840.	1845.	1850.	1855.	1860.	1865.
Above Fourteenth-st.---	15	34	50	100	145	180
Below Fourteenth-st.---	150	162	200	200	180	170
	165	196	250	300	325	350

This table embraces churches, chapels, bethels, and missions of all kinds.

CHURCHES FOR SEAMEN.

72 Madison-street.
 Oliver-street, cor. Henry.
 Market-street, cor. Henry.
 Bethel, Pike-street, East river.
 Bethel, Pier 11 North river.
 Bethel, Hubert-street, North river.
 Dover-street, cor. Water.
 27 Greenwich-street.
 22 South-street.

READING ROOMS FOR SEAMEN.

72 Madison-street.
 Oliver-street, cor. Henry.
 27 Greenwich-street.
 Dover-street, cor. Water.
 Market-street, cor. Henry.

DAILY PRAYER MEETINGS.

Business Men's Noon-day Prayer Meeting, Consistory room, Fulton-street, near William, every day from 12 to 1 o'clock.

Daily Prayer Meeting for Sailors, 72 Madison-street.

“ “ “ “ Oliver-street, cor. Henry.

“ “ “ “ Market-street, cor. Henry.

Daily Prayers in Trinity church, Broadway, opp. Wall-street.

“ “ St. Luke's, Hudson-street, opp. Grove.

“ “ Annunciation, W. Fourteenth-st., n. Seventh-av.

“ “ Transfiguration, E. Twenty-ninth-st., n. Fifth-av.

“ “ Trinity chapel, W. Twenty-fifth-st., n. Broadway.

CHRISTIAN ASSOCIATIONS,

FOR YOUNG MEN AND YOUNG WOMEN.

Young Men's Christian Association Library and Reading room, open daily, 161 Fifth-av., cor. Twenty-second-st.; and Western Branch, 76 Varick-street, near Canal.

Ladies' Christian Home Association, Boarding-house for Young Women, 174 E. Fourteenth-st.

Women's Library.

FREE READING ROOMS FOR THE PEOPLE.

Cooper Union, Astor-place.
J. W. Farmer's, 47 Ludlow-street.
50 Trinity-place.
193 W. Twenty-fourth-street.
204 Bleecker-street.

CITY MISSION READING ROOMS.

122 Leonard-street.
273 W. Twenty-fifth-street.
212 Grand-street.

FOR COLORED PEOPLE.

93 Wooster-street.

ROMAN-CATHOLIC LIBRARY ASSOCIATION.

Broadway, cor. Twelfth-street.
267 Broadway.
385 Third-avenue.

SABBATH-SCHOOLS IN NEW YORK.

The devoted laborers connected with the New York City Mission have recently made a fresh examination of the Sabbath-schools in New York for the purpose of ascertaining the actual number of children in attendance; and the result of their investigations has been carefully compiled and arranged in a tabular form by the Corresponding Secretary of the City Mission, Mr. Lewis E. Jackson. It will be seen that there are 312 Protestant Sabbath-schools and 53 Roman-catholic, Jewish, etc., making a total of 365 Sabbath school.

The scholars on roll in the Protestant Sabbath-schools number 77,450, with an average attendance in March of 51,243. The scholars on roll in the Roman-catholic and other schools number

38,875, with an average attendance in March of 28,902. The Roman-catholic Sabbath-schools all return very large numbers. One Roman-catholic church, having one home and two mission Sabbath-schools, reports 6,000 scholars on roll, with an average attendance of 4,000.

Without entering into any analysis of this interesting table, we may say that, in any view of the matter, we must see that a great missionary work is yet to be done, and every church and every Christian should inquire as to their responsibility in the premises.

WARDS.	Evangelical Sabbath-schools.			Unevangelical Sabbath-schools.			U. S. Census, 1860.	State Census, 1865.
	Number of schools.	Scholars on roll.	Average attendance.	Number of schools.	Scholars on roll.	Average attendance.	Children between 5 and 15.	Children between 5 and 15.
First-----	2	500	300	--	-----	----	3,261	2,171
Second-----	2	650	331	--	-----	----	451	204
Third-----	2	350	220	1	975	675	676	511
Fourth-----	4	1,000	690	1	1,500	1,200	3,958	4,072
Fifth-----	3	2,436	1,000	--	-----	----	4,021	3,624
Sixth-----	6	1,648	1,140	2	1,400	1,250	4,805	4,795
Seventh-----	7	1,910	1,000	2	560	400	7,201	8,178
Eighth-----	11	2,521	1,814	2	800	720	7,149	6,609
Ninth-----	25	7,114	4,675	2	620	541	7,989	7,965
Tenth-----	6	1,920	1,225	--	-----	----	5,229	6,497
Eleventh-----	12	3,486	2,412	3	1,200	1,200	10,793	14,962
Twelfth-----	20	3,963	2,975	4	2,500	1,600	5,516	7,750
Thirteenth-----	9	2,605	1,835	3	6,000	4,000	5,925	6,107
Fourteenth-----	5	1,075	635	2	722	662	5,055	5,034
Fifteenth-----	17	5,785	3,225	3	1,500	700	4,965	4,016
Sixteenth-----	23	4,911	3,231	1	800	800	8,132	9,019
Seventeenth-----	24	5,750	4,400	6	4,300	3,200	13,099	18,168
Eighteenth-----	29	6,545	4,630	4	3,333	2,546	10,343	10,282
Nineteenth-----	26	4,986	3,466	5	2,005	1,598	5,911	9,316
Twentieth-----	21	6,014	3,964	3	2,100	1,600	12,159	14,365
Twenty-first-----	29	5,405	3,715	5	6,110	4,335	8,824	8,201
Twenty-second	28	6,876	4,360	3	2,450	1,875	11,114	11,667
	312	77,450	51,243	53	38,875	28,902	146,460	163,493

CHURCH REMOVALS.

The following is an enumeration of churches that have changed their location from the lower wards, and will give an impressive view of the growth of the city and the rapidity with which the population is being crowded out by the demands of trade, and transferred from one part of the city to another.

1. South Dutch ch., removed from Exchange-pl. to Murray-st. ; and again from Murray-st. to Fifth-av. and Twenty-first-st.
2. Middle Dutch ch., Nassau, cor. Liberty ; now the Post-office.
3. Reformed Dutch ch., Franklin, near Church, removed to West Twenty-third-st.
4. First Presbyterian ch., Wall-st., removed to Fifth-avenue and Twelfth-st.
5. Presbyterian ch., Cedar-st., removed to Murray-st. ; and afterwards to Eighth-st., near Fourth-av. Now occupied by Romanists.
6. Scotch Presbyterian, under the care of Rev. Dr. John Mason, Cedar-st., removed to Grand ; and again to Fourteenth-st.
7. Presbyterian ch., under the care of Rev. Dr. Romeyn, removed from Cedar to Duane-st. A portion of the congregation removed, and built the church University-pl., cor. Tenth-st. Afterwards the remainder removed, and established the church cor. Fifth-av. and Nineteenth-st.
8. Presbyterian ch., Dey-st., cor. Washington.
9. Presbyterian ch., cor. Chambers-st., opposite the Park, removed to Prince and Marion ; and again to Twelfth-st., near Sixth-av.
10. Presbyterian ch., Pearl-st., near Broadway, removed to Broome-st. ; and lately sold out, and removed to vicinity of Central Park.
11. Grace Prot. Epis. ch., from Broadway, cor. Rector, to Broadway, cor. Tenth-st.
12. French Prot. Epis. ch., from Pine-st., to Franklin and Church ; and again to West Twenty-second-st., near Sixth-av.
13. Christ Prot. Epis., from Ann-st. to Anthony ; and from Anthony to Eighteenth-st. ; and again to Fifth-av. and Thirty-fifth-st.
14. The Bowery Presbyterian ch., Bowery, near Hester-st.

15. Free Prot. Epis., Vandewater-st.
16. St. George's Prot. Epis., from Beekman-st. to Sixteenth-st. The old building in Beekman-st. was kept, until quite recently, for religious services, as St. George's chapel, by Trinity ch.
17. Zion Prot. Epis. ch., removed from Mott-st. to Madison-av. and Thirty-eighth-st.
18. First Baptist ch., Gold-st., removed to Broome, cor. Elizabeth.
19. South Baptist ch., Nassau, near Fulton, removed to Hammond-st. ; and again to West Twenty-fifth-st.
20. Baptist Tabernacle, from Mulberry to Second-av. and Tenth-st.
21. Friends' Meeting-house, Liberty-st.
22. Friends' Meeting-house, Pearl, near Franklin-sq.
23. Friends' Meeting-house, Rose-st.
24. Moravian ch., Fulton, near William, removed to Houston, cor. Mott; and now temporarily worshipping in Medical College, Fourth-av. and Twenty-third-st.
25. Lutheran ch., William, cor. Frankfort.
26. Chatham-street chapel.
27. Methodist Episcopal ch., John st A part of the congregation removed, and established themselves in Mulberry-st., near Bleecker; and again removed and built St. Paul's, corner of Fourth-av. and Twenty-second-st. There is still a little flock left in the old church in John-st.
28. Methodist Episcopal, Vestry-st., removed to Seventh-av., near Fourteenth-st.
29. Swedenborgian ch., Pearl, near Chatham.
30. Unitarian ch., Chambers-st., near West Broadway, to Broadway; and again to Twentieth-st. and Fourth-av.
31. Universalist ch., Duane-st., cor. City-Hall-pl.
32. Mariners' ch., Roosevelt-st.
33. Jews' Synagogue, Mill-st.
34. Roman-catholic ch., Ann-st. A part removed, and built in James-st. Another part bought the Presbyterian church in Chambers st.; afterwards sold out, and bought the Ascension Episcopal church in Canal-st.; and again sold out, and established themselves in West Twenty-third st., near Sixth-av.
35. St. Philip's Prot. Epis., (col'd,) from Centre-st., to Mulberry, near Bleecker.
36. Duane-street Meth. Epis., removed to Hudson, near Spring.
37. Zion ch., (col'd,) removed from Church to Bleecker-st.
38. Oliver-street Baptist ch., removed to Madison-av. and Thirty-first-st. The old church is now used for a Mariners' church.

39. Brick Presbyterian, Beekman-st., removed to Fifth-av. and Thirty-seventh-st.
40. Associate Reformed, Franklin, near Varick.
41. Broadway Tabernacle Congregational ch., from Broadway and Leonard, to Sixth-av. and Thirty-fourth-st.

Thus far we have only noticed the removals from the six lower wards; but many have taken place, of more recent date, from above those lines, which will be readily recalled by every citizen, and add a striking testimony to the growth of New York and show the direction in which the city extends.

42. Ascension Prot. Epis., Canal-st., to Fifth-av. and Tenth-st.
43. Jews' Synagogue, Crosby-st.
44. Second Reformed Presbyterian, Crosby-st., removed to Mulberry, then to Orchard, then to Rivington, and now worshipping temporarily in the Hall of the Historical Society.
45. Brainerd Presbyterian ch., Rivington-st., to Second-av. and Fourteenth-st.
46. Stanton-street Presbyterian, to Lexington-av. and Forty-sixth.
47. Baptist ch., Eleventh-st., removed to Twelfth-st., then to Fifth-av., now in Lexington-av. and Thirty-seventh-st.
48. Norfolk-st. Baptist, to Forty-sixth-st., near Fifth-av.
49. Jews' Synagogue, Greene-st., removed to Thirty-fourth-st.
50. Eleventh Presbyterian, Fourth-st. and Av. C, to Fifth-fifth-st. and Lexington-av.
51. Rutgers-st. Presbyterian, to Madison-av. and Twenty-ninth-st.
52. Sixth-st. Presbyterian, to Fourteenth-st. and Second-av.
53. West Presbyterian, Carmine-st., to Forty-second-st., near Fifth-av.
54. St. Thomas' Prot. Epis., Broadway, cor. Houston, to Fifth-av. and Fifty-fourth-st.
55. Universalist, Broadway, near Prince, to Fifth-av. and Forty-fifth-st.
56. Reformed Presbyterian, Sullivan-st., to West Twenty-eighth-st.
57. Presbyterian, Grand, cor. Mercer-st.
58. Central Presbyterian, Broome, near Elm, to Seventh-av. and Fifty-sixth-st.; now worshipping in West Fiftieth-st., near Eighth-av. A portion of this congregation previously removed, and established themselves at Madison-sq. and Twenty-fourth-st.
59. St. Stephen's Prot. Epis., Broome, cor. Chrystie; now worshipping in West Twenty-second-st., near Sixth-av.

60. Greenwich Reformed Dutch, Bleecker-st.
61. Baptist ch., Twenty-second-st., to Fifty-third-st., near Seventh-av.
62. Market-street Reformed Dutch.
63. Universalist ch., Twentieth-st., near Seventh-av., to 65 West-Thirty-fifth-st.
64. Grand-street Presbyterian, to Thirty-fourth-st., near Sixth av.
65. Ninth-street Reformed Dutch.
66. Broome-street Reformed Dutch, to West Thirty-fourth-st., near Eighth-av.
67. Amity-street Baptist, to West Fifty-fourth-st., near Eighth-av.
68. Bleecker-street Presbyterian, to Fourth-av., cor. Twenty-second-st.
69. Unitarian, Prince st., to Broadway, near Waverley-pl. ; to Madison-av. and Twenty-eighth-st.; and again to Park-av. and Thirty-fourth-st.

It must not be supposed that we have given a complete statement of all the church removals which have ever taken place in the city. The information furnished is as accurate as it could possibly be made from all the data to be obtained. There are, doubtless, many other churches which once had a name and a place, but have been merged into new organizations—sometimes two, or even three, churches uniting to make one; and there are still others which once had an existence, and are now entirely extinct.

With all these changes, there has been a steady advance. The churches have increased in number, strength, and efficiency. Old edifices have given way to elegant and commodious buildings. Nearly all the old congregations are represented in new and costly churches, and for the most part out of debt; and mission stations, mission Sabbath-schools, and other institutions have been multiplied to meet the necessities of the people remaining in the districts vacated by the churches.

The concentration of population in New York, as it depends upon general causes, may be considered as a settled fact, and made a basis of calculation; and the shape and position of the island absolutely determine the tendency of the city's growth. The lower part of the city must necessarily be given up to business; and the sides of the city, on the rivers, will be covered with freight dépôts, warehouses, factories, ship-yards, coal-yards, lumber-yards, stone-yards, etc. The churches will naturally seek for their location the upper and central portion of the city, whither the population is

constantly drifting ; so that we may reasonably expect that church removals will continue to go on. And for the industrial classes, and others who will still remain down town, and on the outskirts of the city, the Christian people of all denominations should heartily combine, on the principles of a common faith, to sustain numbers of missionaries to visit daily from house to house, and establish attractive mission stations, and organize Sabbath-schools, industrial schools, reading clubs, temperance leagues, etc.

There will undoubtedly be a large field, too far from the churches, to be reached by voluntary effort, which must be cared for by a paid agency, with suitable facilities for a permanent occupation of the ground, and with a sufficient force for aggressive activity in every direction.

The City Mission, organized on a catholic basis, duly incorporated, and effectively managed, is seeking to unite all evangelical Christians in a comprehensive scheme of missionary labor, whereby the simple gospel may be carried to all the people ; and which also contemplates the erection of a neat, commodious, substantial building in every needy district, for missionary purposes.

CHURCH ACCOMMODATIONS.

A COMPARATIVE VIEW.

In the first six wards there are fifteen churches and twelve missions, making a total of twenty-seven places of religious worship ; and of these, twenty-one are Protestant. The population of those six wards is 90,000. There are twenty-seven churches and missions for all ; or one church to every 3,300 persons. There are twenty-one Protestant churches and missions ; or one Protestant church to every 4,280 persons. Of this population, probably not more than 40,000 can be reckoned as Protestant ; then we have, say, one Protestant church for every 2,000 of the Protestant population.

Take, by way of contrast, the Eighteenth Ward, with a population of 60,000. There are in the Eighteenth Ward, of churches, chapels, and missions of all kinds, 36 ; that is one church to every 1,660 persons. We suppose that one-half of the population is Protestant—say, 30,000. Of the 36 churches, etc., 31 are Protestants. Then we have 31 Protestant churches to 60,000 total population ; or, say, one Protestant church to every 2,000 of the whole population, or one Protestant church to every 1,000 of the Protestant population.

In the Fourteenth Ward there is one Protestant church, one colored, and one Roman-catholic ; and there are four Protestant missions. In the single Protestant church and the four missions together, there are accommodations for 1,400 persons. The population of the Fourteenth Ward is 28,000, one-third Protestant ; so that there are Protestant church accommodations for one-twentieth part of the whole population ; or Protestant church accommodations for one-seventh part of the Protestant population, thus : 1,400 sittings to 28,000 total population ; or 1,400 sittings to 9,000 Protestant population.

Contrast with this the Twenty-first Ward, which has a population of 50,000, one-half Protestant. There are of churches, chapels, and missions of all kinds, 32 ; that is one church to every 1,562 persons. Of the 32 churches, etc., 26 are Protestant. Thus we have, say, one-Protestant church to every 2,000 total population ; or one Protestant church to every 1,000 of the Protestant population. In the Protestant churches and missions there are sittings for 18,000 persons ; thus, 18,000 sittings to 50,000 total population, or 18,000 sittings to 25,000 Protestant population.

A GENERAL VIEW OF ACCOMMODATIONS.

350 churches and missions of all kinds, with accommodations for 300,000 persons. Number of persons to be provided for, say, five-eighths of the whole population, or 500,000 ; leaving 200,000 persons without sittings.

275 Protestant churches and missions, with accommodations for 200,000 persons. Number of Protestants to be provided for, say, 250,000 ; leaving 50,000 Protestants without sittings.



A stranger passing a Sabbath in New York, and desirous of seeing something of Christian work, might adopt a programme like this :

- 9 A. M. Grace Mission Sabbath-school, 176 East Twenty-second-street, near First-avenue ; under the superintendence of Mr. Ralph Wells.
- 9½ A. M. Collegiate Church Mission, 160 West Twenty-ninth-st., near Seventh-av.
- 10½ A. M. Attend church.
- 2 P. M. Juvenile Asylum, 71 W. Thirteenth-st., near Sixth-av.
- 2½ P. M. W. Thirteenth-st. Presbyterian ch. Sabbath-school, W. Thirteenth-st., near Seventh-av.
- 3 P. M. Five Points House of Industry, 155 Worth-st.
- 3½ P. M. Attend church.
- 7½ P. M. Attend City Missions, 27 Greenwich-st. ; or 70 Columbia-st. ; or some other.

OR THIS :

- 9 A. M. St. John's Prot. Epis. Sabbath-school, Varick-st., near Laight-st.
- 9½ A. M. Alexander Mission, 9 King-st.
- 10½ A. M. Attend church.
- 2 P. M. Half-Orphan Asylum, W. Tenth-st., near Sixth-av.
- 2½ P. M. Madison-square Presbyterian Mission, under the superintendence of Mr. David Wetmore, 419 Third-av., near Thirty-first-st.

- 3 P. M. St. Paul's Meth. Epis. Sabbath-school, Fourth-av., cor. Twenty-second-st.
3½ P. M. Attend church.
7½ P. M. Visit Meth. Epis. Missions, 117 Bank-st. ; or W. Thirty-fifth-st., near Tenth-av. ; or some other.

OR THIS :

- 9 A. M. St. George's Prot. Epis. Sabbath-school, E. Sixteenth-st., near Third-av.
9½ A. M. Tabernacle Baptist Mission, 189 E. Twentieth-st., near Second-av.
10 A. M. Fourteenth-st. Presbyterian Mission, E. Twenty-third-st., cor. Second-av.
10½ A. M. Attend church.
2 P. M. Mercer-st. Presbyterian Mission, 118 Avenue D, near Eighth-st.
2½ P. M. Hope Mission, 435 E. Houston-st.
3 P. M. Meth. Epis. Mission, 313 Rivington-st.
3½ P. M. City Mission, 70 Columbia-st.
7½ P. M. Attend church, or City Mission, 273 W. Twenty-fifth-st.

A CHAPTER ON NEW YORK BENEVOLENCE.

There are in the city of New York three hundred religious and benevolent societies, hospitals, dispensaries, asylums, etc. The receipts of some of the leading societies for the last year were as follows:

American Bible Society—

Sales and Rents-----	\$453,265 82
Donations and Legacies-----	280,823 32
	—————\$734,089 14

American Tract Society—

Sales -----	\$384,350 96
Donations and Legacies-----	159,800 47
	————— 544,151 43

American Tract Society of Boston—

Sales -----	\$91,273 72
Donations and Legacies-----	44,192 50
	————— 135,466 22

American Seamen's Friend Society-----	98,230 17
---------------------------------------	-----------

American Guardian Society-----	87,768 00
--------------------------------	-----------

American Missionary Association-----	253,000 00
--------------------------------------	------------

American Board of Comm'rs for Foreign Missions----	448,090 33
--	------------

Methodist Episcopal Missionary Society-----	686,380 30
---	------------

American Church Missionary Society-----	50,000 00
---	-----------

American Home Missionary Society-----	212,567 63
---------------------------------------	------------

American Sunday-school Union-----	77,753 44
-----------------------------------	-----------

Protestant Episcopal Board of Domestic Missions-----	123,273 45
--	------------

Protestant Episcopal Board of Foreign Missions-----	72,613 61
---	-----------

American and Foreign Christian Union-----	110,000 00
---	------------

American and Foreign Bible Society-----	30,719 96
---	-----------

American Baptist Missionary Union-----	190,994 57
--	------------

American Baptist Home Missionary Society-----	137,810 16
---	------------

American Baptist Free Missionary Society-----	30,000 00
---	-----------

Presbyterian Board of Foreign Missions (O. S.)-----	207,526 65
---	------------

Presbyterian Board of Domestic Missions (O. S.)-----	168,241 56
--	------------

Presbyterian Board of Church Extension (O. S.)-----	35,870 28
---	-----------

Presbyterian Commissioners of Home Missions (N. S.)-	128,503 41
--	------------

Presbyterian Commissioners of Education (N. S.)-----	20,455 49
--	-----------

Presbyterian Commissioners of Publication (N. S.)----	13,325 17
Board Foreign Missions, Reformed Dutch Church-----	68,685 41
Board Domestic Missions, Reformed Dutch Church----	24,589 98
National Temperance Society-----	26,592 45
American Freedmen's Union Commission-----	50,000 00

\$4,766,698 81

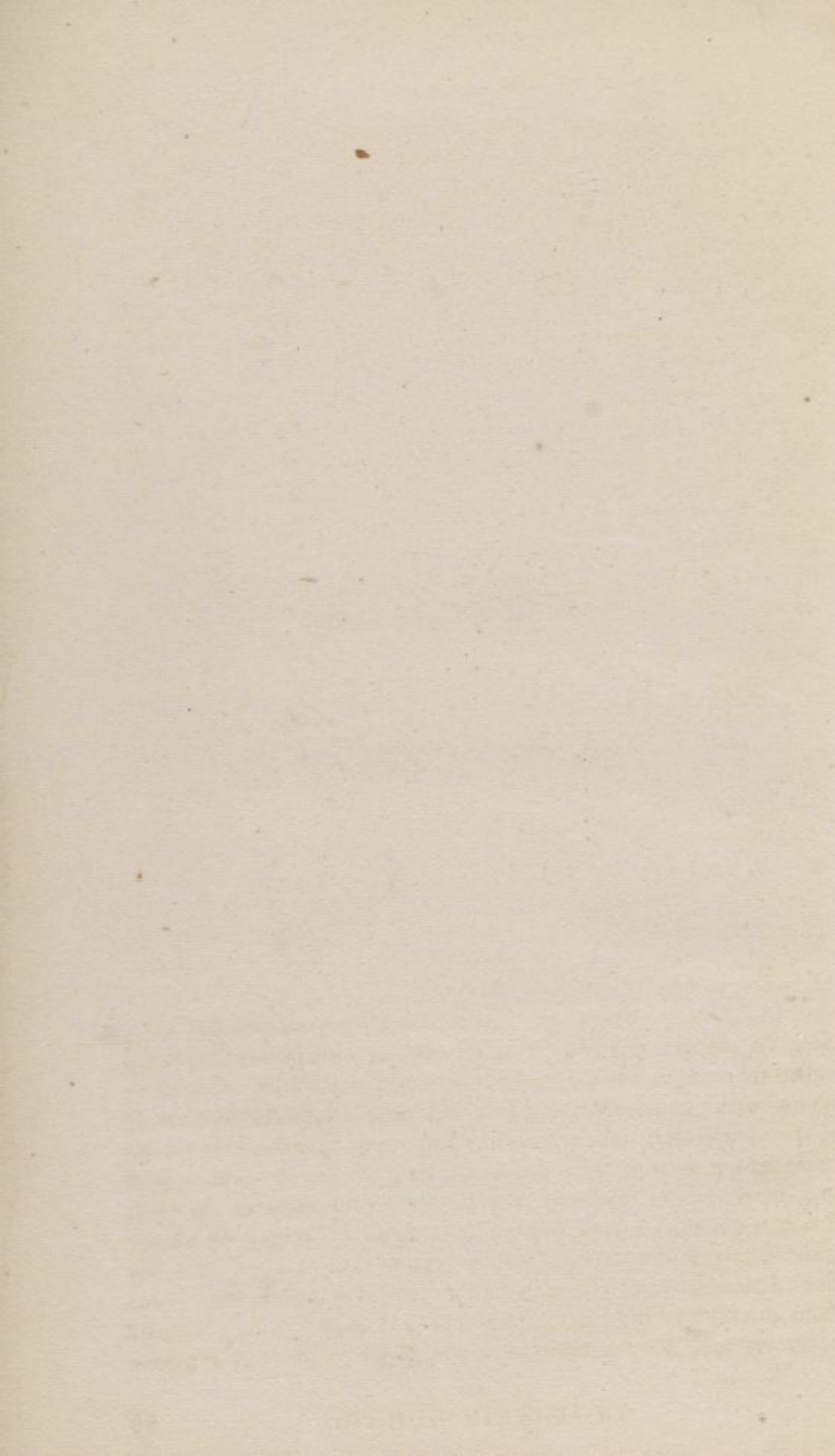
Here are twenty-eight societies, whose receipts in the aggregate amount of \$4,766,698 81; or, excluding proceeds of sales, \$3,837,808 31. Most of the foregoing societies are national in their character, and receive donations from all parts of the country; yet an analysis of the treasurers' accounts will show, in not a few instances, that 10 per cent. of these contributions are from New York city alone. Let us now examine the reports of some of our local societies, depending for their support directly upon the gifts of the citizens of this metropolis.

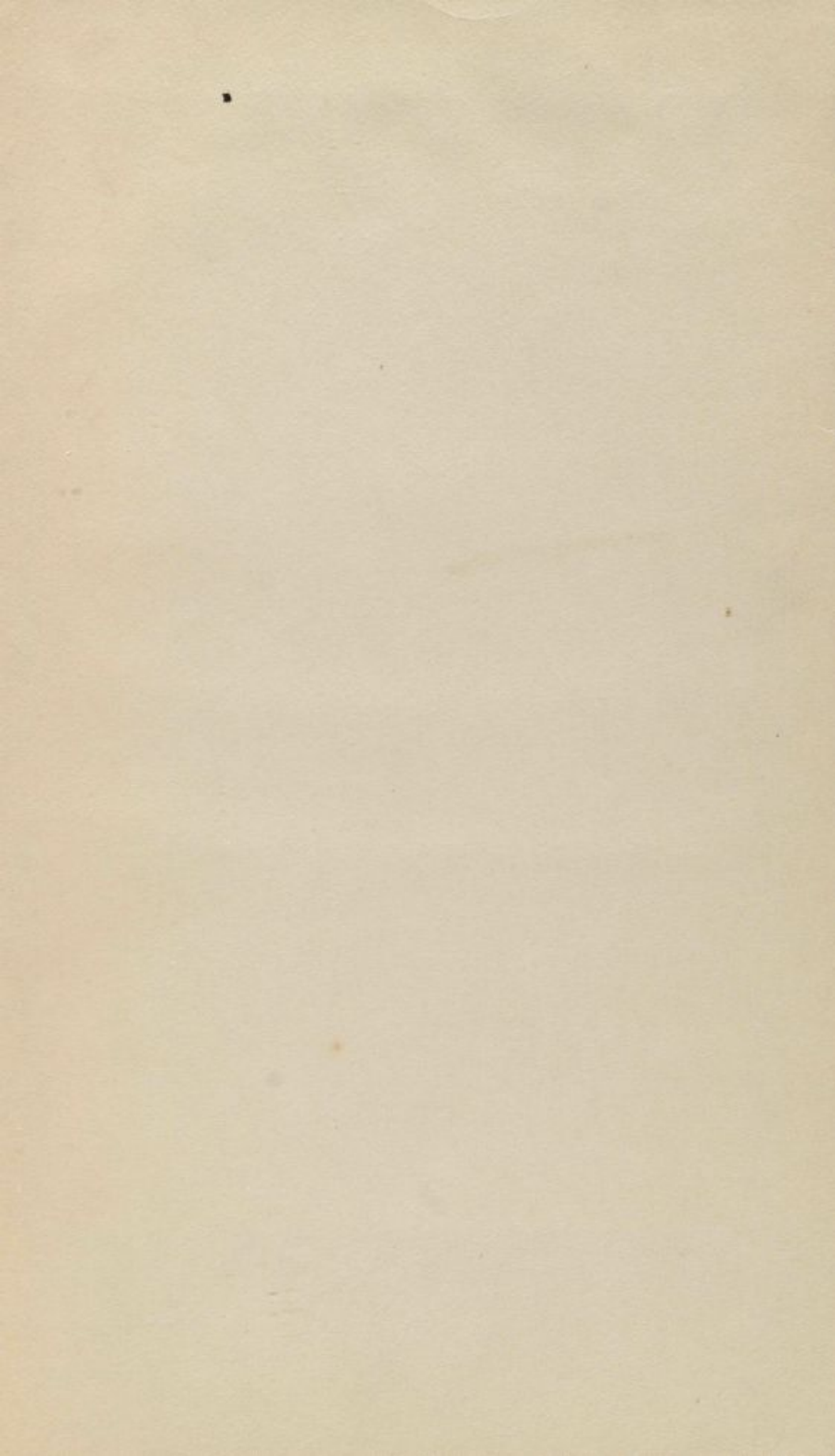
New York Association for the Poor-----	\$51,643 49
New York Sunday-school Union-----	30,000 00
New York and Brooklyn Foreign Missionary Society--	43,802 59
New York Children's Aid Society-----	93,577 07
New York Juvenile Asylum-----	87,439 20
New York City Mission-----	29,064 28
New York Five Points House of Industry-----	67,186 73
New York Ladies' Five Points Mission-----	16,682 78
New York Howard Mission-----	26,000 00
New York Female Assistance Society-----	24,751 46
New York Ladies' Union Aid Society-----	5,079 73
New York Ladies' Christian Union-----	12,817 04
Wilson Industrial Mission-----	10,668 07
New York Bible Society-----	23,915 43
New York Port Society-----	30,000 00
Union Home and School-----	20,259 97
Female Benevolent Society-----	8,889 00
New York Protestant Episcopal City Mission-----	26,899 92
Methodist Episcopal City Mission-----	31,853 72
New York Prison Association-----	13,250 96
New York Society for Ruptured and Crippled-----	19,942 41
New York Widows' Society-----	13,165 25
New York Nursery and Child's Hospital-----	29,394 04
New York Half-Orphan Asylum-----	15,776 78

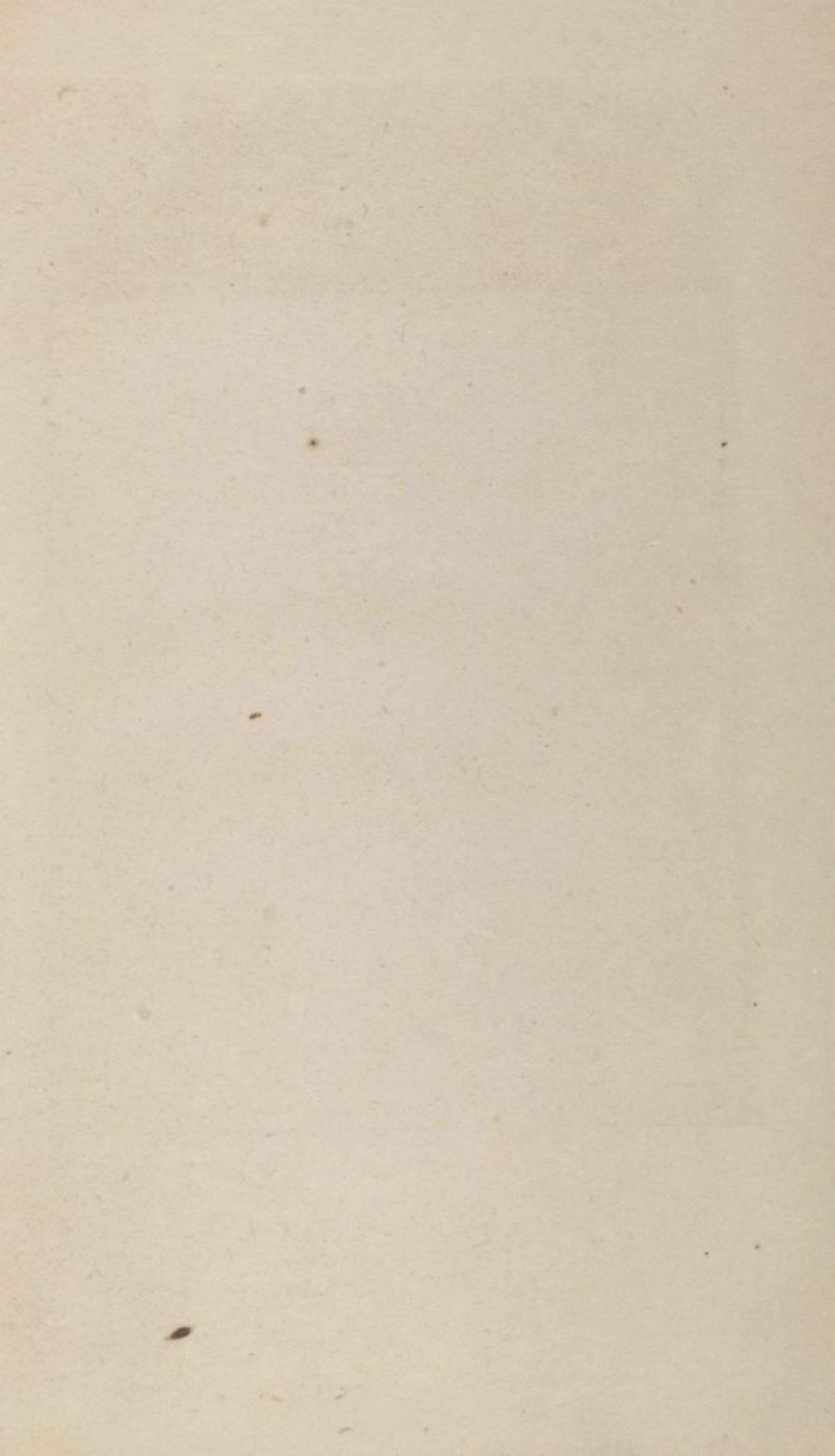
\$732,059 92

Included in the enumeration above, there are twenty-four societies, reporting a total of \$732,059 92. Let us add to this sum, for our other organized city charities, about as much more, and we shall have, say, one million and a half of dollars as the regular annual voluntary contribution of the citizens of New York for the support of the local religious and benevolent associations. But this is very far from being a complete view of the beneficence of New York for any one year. The reader will easily recall recent examples of large-hearted liberality such as the gift by one citizen of \$1,000,000 and more for the erection of improved dwellings for the poor; another of \$500,000 for a theological seminary; another of \$100,000 for the New York University; another of \$60,000 for a Foreign Mission Board; another of \$60,000 for a seminary on Lookout Mountain; another of \$30,000 for Williams College; the large Centenary donations of members of the Methodist Episcopal church, etc. And within a brief period \$200,000 have been raised by the Southern Relief Association; \$200,000 by the Young Men's Christian Association; \$100,000 by the City Mission; \$50,000 for the Woman's Hospital; \$50,000 for the Publication Fund of the American Tract Society; \$20,000 for the Bible House at Constantinople, etc. And there are various proposals now before the community for the establishment of missions, hospitals, industrial schools, homes for women, etc., involving the raising of at least \$500,000; all of which projects will, no doubt, soon be accomplished. The pastor of a city church the other day stated that the benevolent contributions of his people for the year amounted to \$96,697. And two other churches have each reported lately, for the same period, more than \$62,000. A new mission chapel was recently opened, the cost of which is said to be about \$60,000. The income from pews in one church is said to be \$19,000; in another, \$16,000; and the cost of maintaining religious services in the two hundred and sixteen regularly incorporated Protestant churches cannot be short of \$1,500,000 annually. From all of these statements it will appear that while New York is rapidly growing in wealth, the liberality of her citizens is increasing also; indeed, it is perfectly obvious to those who are familiar with the facts of the case, that there has been, within a few years, a great advance in the spirit and style of giving. When the business enterprise and energy of the merchant princes meet their appropriate reward in magnificent incomes, it is looked upon as a legitimate result, as the natural working of the laws of trade; and when the outgoes for Christ and his cause are on a royal scale, commensurate with the imperial

wealth of the people, will it not be as natural to expect far more glorious results? Bishop Taylor said, "No man is a better merchant than he that lays out his time upon God, and his money upon the poor." We have many of those active business men well known on 'Change, who have found that wisdom which "is better than the merchandise of silver, and the gain thereof than fine gold;" and who esteem it an honor and a privilege to devote time, talent, and property to the best interests of their fellow-men. It is in grateful recognition of the wonderful prosperity with which Providence has crowned us, and thankful for the benevolent disposition God has given our business men, that this chapter on New York benevolence has been penned.







This book is due two weeks from the last date stamped below, and if not returned at or before that time a fine of five cents a day will be incurred.

GLX DEC 30 1947

DEC 22 1947

JUN 14 1959

978N48

J12

Jackson.

Church directory

W.L. ~~Nov 14~~ NOV '04

BINDER

978N48

J12

X822496X

08224960

978N48

J12 C1

CHURCH DIRECTORY

H. W. O.

APR 13 1937

