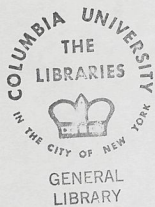


978N48

D41



GENERAL  
LIBRARY







COLLEGE  
COLLEGE  
LIBRARY

Memoranda Maps

for

Searchers of Titles, Conveyancers, Real Estate De

drawn by

Adolf Dengler.

DENGLER.

978 N48  
D41  
atlas

291905

Recd APR 14 1954 P.J.H.

# DISTANCES AND MEASUREMENTS.

## LENGTH OF BLOCKS BETWEEN THE AVENUES.

SOUTH OF 23D STREET.	SOUTH OF 34TH STREET.	NORTH OF 34TH STREET.
Bet. Aves. B and D. . . . . 676 feet each Block	Bet. Aves. D and A. . . . . 646 feet each Block	Bet. Aves. D and A. . . . . 646 feet each Block
“ “ A and B. . . . . 666 “	“ Ave. A and 1st Ave. 613 “	“ Ave. A and 1st Ave. 613 “
“ Ave. A and 1st Ave. 613 “	“ 1st and 2d Aves. . . . . 650 “	“ 1st and 2d Aves. . . . . 650 “
“ 1st and 2d Aves. . . . . 650 “	“ 2d and 3d “ . . . . . 610 “	“ 2d and 3d “ . . . . . 610 “
“ 2d and 3d “ . . . . . 610 “	“ 3d to Lexing'n Aves. 420 “	“ 3d and 4th “ . . . . . 900 “
“ 3d and Irving Place. 420 “	“ Lex. to Madison “ 425 “	“ 4th and 5th “ . . . . . 900 “
“ 3d and 4th Aves. . . . . 920 “	“ Mad. to 5th Aves. . . . . 420 “	“ 5th and 6th “ . . . . . 920 “
“ 4th and 6th “ . . . . . 920 “ each Block	“ 5th to 6th “ . . . . . 920 “	“ 6th and 11th “ . . . . . 800 “ each Block
“ 6th and 11th “ . . . . . 800 “ “	“ 6th to 11th “ . . . . . 800 “ each Block	

## LENGTH OF BLOCKS BETWEEN FOLLOWING STREETS:

1st to 3d St. . . . . each 211 feet 11 in.	8th to 9th St. . . . . 187 feet 10 in.	21st to 42d Sts. . . . . each 197 feet 6 in.
3d to 5th “ . . . . . “ 192 “ 1 “	9th to 10th “ . . . . . 184 “ 6 ½ “	42d to 71st “ . . . . . “ 200 “ 10 “
5th to 6th St. . . . . 194 “ 1 ½ “	10th to 11th “ . . . . . 189 “ 7 “	71st to 86th “ . . . . . “ 204 “ 4 “
6th to 7th “ . . . . . 181 “	11th to 16th “ . . . . . each 208 “ 6 “	86th to 96th “ . . . . . “ 201 “ 5 “
7th to 8th “ . . . . . 195 “	16th to 21st “ . . . . . “ 184 “	96th to 125th St. . . . .
All above 125th St. . . . . 199 feet 10 in.		

The above Streets are all 60 feet wide except:

14th St.	72d St.	116th St.
23d “	79th “	125th “
34th “	86th “	135th “
42d “	96th “	145th “
57th “	106th “	155th “

which are 100 feet wide.

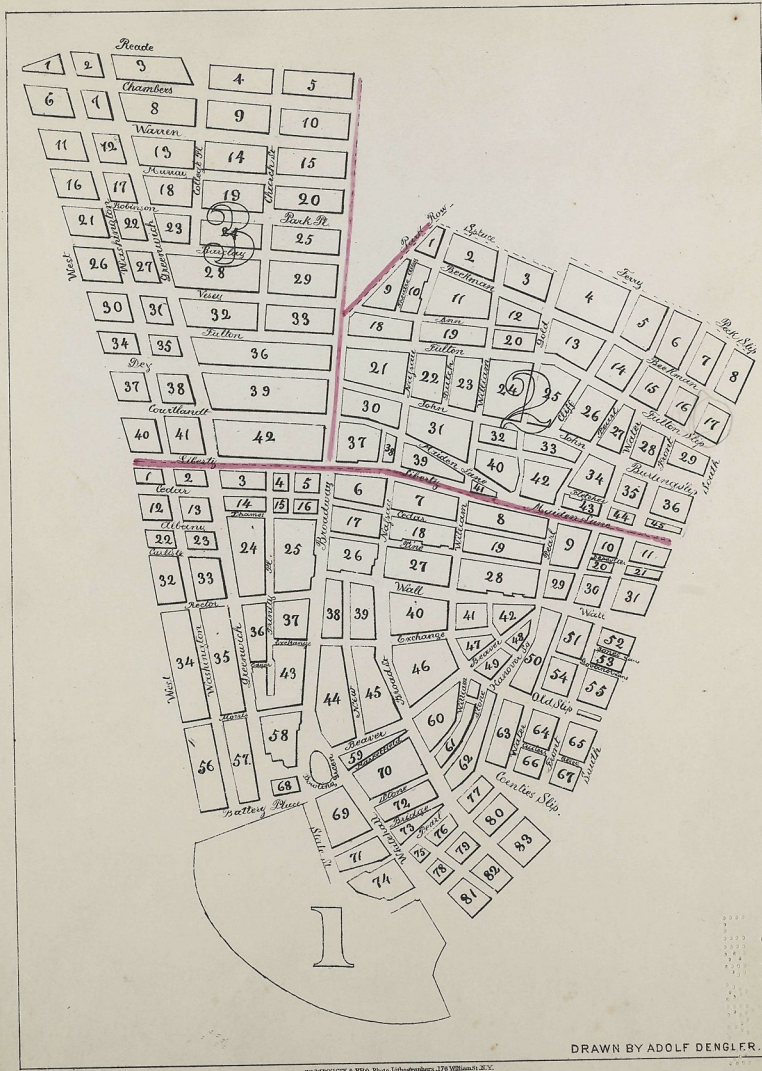
The Avenues are all 100 feet wide except:

A and C, South of 23d St. . . . .	each 80 feet.
B and D, “ 23d “ . . . . .	“ 60 “
Lexington and Madison, South of 23d St., “	“ 75 “
4th Avenue above 34th St. . . . .	“ 140 “









DRAWN BY ADOLF DENGLER.





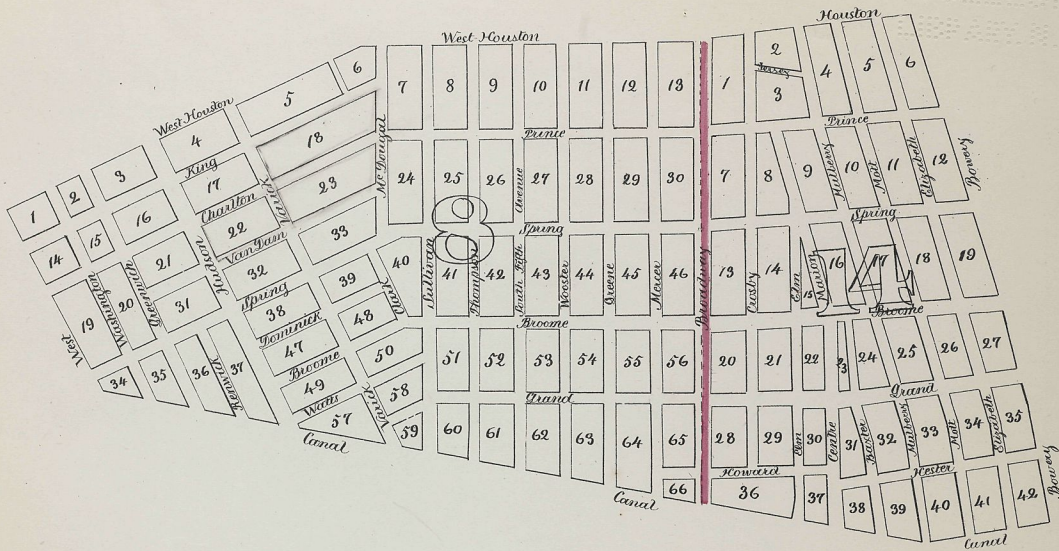










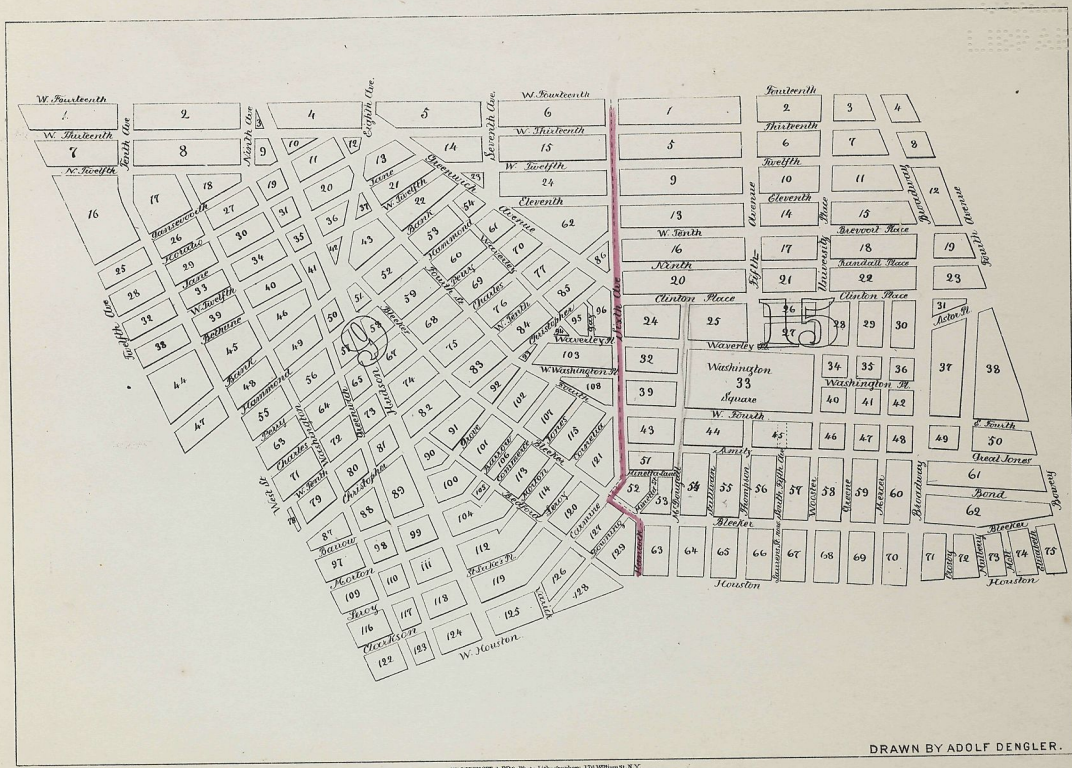


DRAWN BY ADOLF DENGLER.









DRAWN BY ADOLF DENGLER.











			<i>W. Twenty Sixth</i>		
1	2	3	4	5	6
7	8	9	<i>W. Twenty Fifth</i>	11	12
13	14	15	<i>W. Twenty Fourth</i>	17	18
19	20	21	<i>W. Twenty Third</i>	22	23
25	26	27	<i>W. Twenty Second</i>	29	30
31	32	33	<i>W. Twenty First</i>	35	36
37	38	39	<i>W. Twentieth</i>	41	42
43	44	45	<i>W. Nineteenth</i>	47	48
49	50	51	<i>W. Eighteenth</i>	53	54
	55	56	<i>W. Seventeenth</i>	58	59
	60	61	<i>W. Sixteenth</i>	63	64
	65	66	<i>W. Fifteenth</i>	68	69
			<i>W. Fourteenth</i>		

*Twelfth Avenue*

*Eleventh Avenue*

*Tenth Avenue*

*Ninth Avenue*

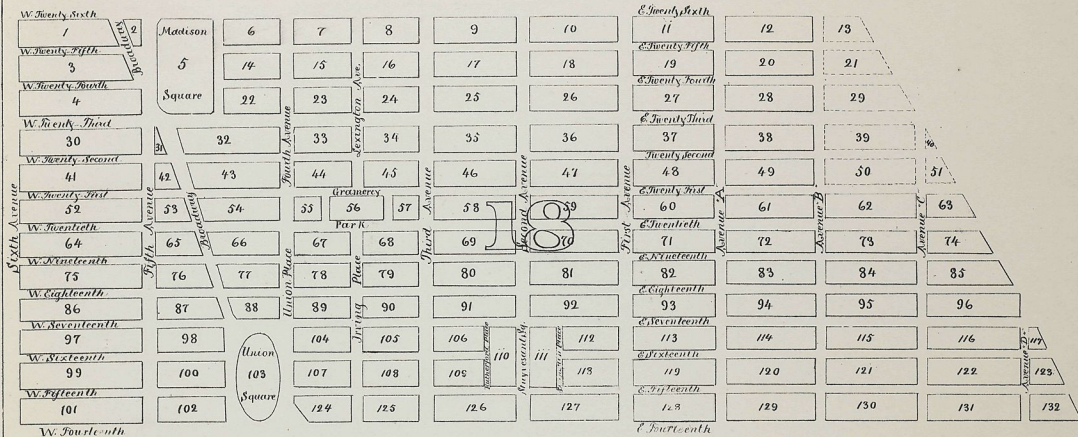
*Eighth Avenue*

*Seventh Avenue*

*Sixth Avenue*

DRAWN BY ADOLF DENGLER.





DRAWN BY ADOLF DENGLER.





*Twelfth Avenue*

*Eleventh Avenue*

*Tenth Avenue*

*Ninth Avenue*

*Eighth Avenue*

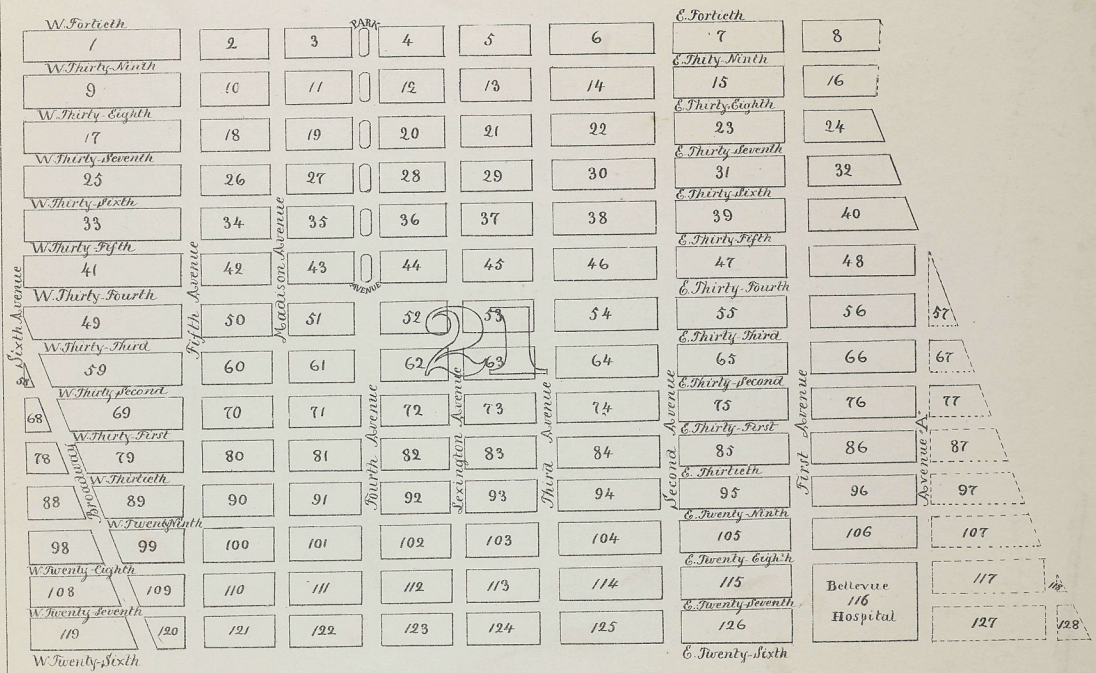
*Seventh Avenue*

*Sixth Avenue*

1	W. Fortieth 2	3	4	W. Fortieth 5	6	7
8	W. Thirty-Ninth 9	10	11	W. Thirty-Ninth 12	13	14
15	W. Thirty-Eighth 16	17	18	W. Thirty-Eighth 19	20	21
22	W. Thirty-Seventh 23	24	25	W. Thirty-Seventh 26	27	28
29	W. Thirty-Sixth 30	31	32	W. Thirty-Sixth 33	34	35
36	W. Thirty-Fifth 37	38	39	W. Thirty-Fifth 40	41	
42	W. Thirty-Fourth 43	44	45	W. Thirty-Fourth 46	47	
48	W. Thirty-Third 49	50	51	W. Thirty-Third 52	53	
54	W. Thirty-Second 55	56	57	W. Thirty-Second 58	59	
60	W. Thirty-First 61	62	63	W. Thirty-First 64	65	
66	W. Thirtieth 67	68	69	W. Thirtieth 70	71	
72	W. Twenty-Ninth 73	74	75	W. Twenty-Ninth 76	77	
78	W. Twenty-Eighth 79	80	81	W. Twenty-Eighth 82	83	
84	W. Twenty-Seventh 85	86	87	W. Twenty-Seventh 88	89	
	W. Twenty-Sixth			W. Twenty-Sixth		







DRAWN BY ADOLF DENGLER.



		<i>E. Eighty-Sixth</i>						
1	2	3		4	5	6	7	8
		<i>E. Eighty-Fifth</i>						
9	10	11		12	13	14	15	16
		<i>E. Eighty-Fourth</i>						
17	18	19		20	21	22	23	24
		<i>E. Eighty-Third</i>						
25	26	27		28	29	30	31	32
		<i>E. Eighty-Second</i>						
33	34	35		36	37	38	39	40
		<i>E. Eighty-First</i>						
41	42	43		44	45	46	47	48
		<i>E. Eightieth</i>						
49	50	51		52	53	54	55	56
		<i>E. Seventy-Ninth</i>						
57	58	59		60	61	62	63	
		<i>E. Seventy-Eighth</i>						
64	65	66		67	68	69	70	
		<i>E. Seventy-Seventh</i>						
71	72	73		74	75	76	77	
		<i>E. Seventy-Sixth</i>						
78	79	80		81	82	83	84	
		<i>E. Seventy-Fifth</i>						
85	86	87		88	89	90	91	
		<i>E. Seventy-Fourth</i>						
92	93	94		95	96	97	98	
		<i>E. Seventy-Third</i>						
99	100	101		102	103	104	105	
		<i>E. Seventy-Second</i>						
106	107	108		109	110	111	112	
		<i>E. Seventy-First</i>						
113	114	115		116	117	118	119	
		<i>E. Seventieth</i>						
120	121	122		123	124	125	126	
		<i>E. Sixty-Ninth</i>						
127	128	Hamilton Square		130	131	132	133	
134	135			136	<i>E. Sixty-Eighth</i> 137	138	139	
140	141			142	<i>E. Sixty-Seventh</i> 143	144	145	
146	147			148	<i>E. Sixty-Sixth</i> 149	150	151	152
154	155	156	157	158	<i>E. Sixty-Fifth</i> 159	160	161	
162	163	164	165	166	<i>E. Sixty-Fourth</i> 167	168	169	
170	171	173	174	175	<i>E. Sixty-Third</i> 176	177	178	
179	180	181	182	183	<i>E. Sixty-Second</i> 184	185	186	
187	188	189	190	191	<i>E. Sixty-First</i> 192	193	194	
195	196	197	198	199	<i>E. Sixtieth</i> 200	201	202	
					<i>E. Fifty-Ninth</i>			

Fifth Avenue

Madison Avenue

Fourth Avenue

Third Avenue

Second Avenue

First Avenue

Avenue A

Avenue B

Lexington Avenue





	W. Fifty-Ninth	202	203	204	205	206	207	E. Fifty-Ninth	208	209	210
	W. Fifty-Eighth	211	212	213	214	215	216	E. Fifty-Eighth	217	218	219
	W. Fifty-Seventh	220	221	222	223	224	225	E. Fifty-Seventh	226	227	228
	W. Fifty-Sixth	229	230	231	232	233	234	E. Fifty-Sixth	235	236	237
	W. Fifty-Fifth	238	239	240	241	242	243	E. Fifty-Fifth	244	245	246
	W. Fifty-Fourth	247	248	249	250	251	252	E. Fifty-Fourth	253	254	255
	W. Fifty-Third	256	257	258	259	260	261	E. Fifty-Third	262	263	
	W. Fifty-Second	264	265	266	267	268	269	E. Fifty-Second	270	271	
	W. Fifty-First	272	273	274	275	276	277	E. Fifty-First	278	279	
Sixth Avenue	W. Fiftieth	280	281	282	283	284	285	E. Fiftieth	286	287	
	W. Forty-Ninth	288	289	290	291	292	293	E. Forty-Ninth	294	295	
Fifth Avenue	W. Forty-Eighth	296	297	298	299	300	301	E. Forty-Eighth	302	303	
	W. Forty-Seventh	304	305	306	307	308	309	E. Forty-Seventh	310	311	
Madison Avenue	W. Forty-Sixth	312	313	314	315	316	317	E. Forty-Sixth	318	319	
	W. Forty-Fifth	320	321	322	323	324	325	E. Forty-Fifth	326	327	
Fourth Avenue	W. Forty-Fourth	328	329	330	331	332	333	E. Forty-Fourth	334	335	
	W. Forty-Third	336	337	338	339	340	341	E. Forty-Third	342	343	
Lexington Avenue	W. Forty-Second	345	346	347	348	349	350	E. Forty-Second	350	351	
	Reservoir Square	344	352	353	354	355	356	E. Forty-First	357	358	
	W. Fortieth							E. Fortieth			

Avenue A

Second Avenue

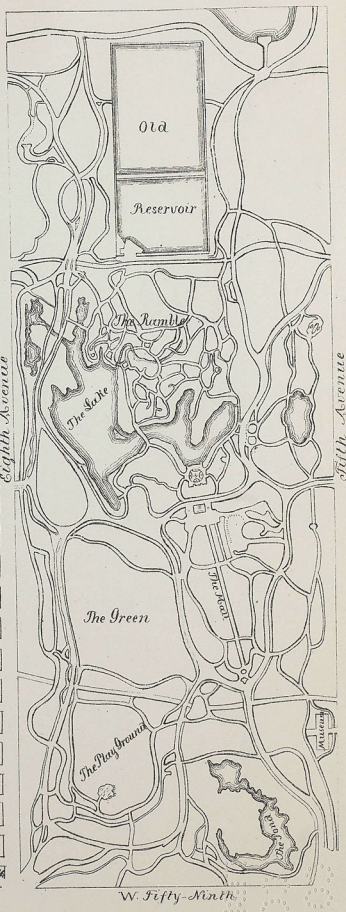
Third Avenue

DRAWN BY ADOLF DENGLER.





			W. Eighty-sixth	
1	2	3	4	5
6	7	8	W. Eighty-fifth	9
11	12	13	W. Eighty-fourth	14
16	17	18	W. Eighty-third	19
21	22	23	W. Eighty-second	24
26	27	28	W. Eighty-first	29
31	32	33	W. Eightieth	34
35	36	37	W. Seventy-ninth	38
39	40	41	W. Seventy-eighth	42
43	44	45	W. Seventy-seventh	46
48	49	50	W. Seventy-sixth	51
53	54	55	W. Seventy-fifth	56
58	59	60	W. Seventy-fourth	61
63	64	65	W. Seventy-third	66
67	68	69	W. Seventy-second	70
71	72	73	W. Seventy-first	74
75	76	77	W. Seventieth	78
80	81	82	W. Sixty-ninth	83
85	86	87	W. Sixty-eighth	88
90	91	92	W. Sixty-seventh	93
95	96	97	W. Sixty-sixth	98
100	101	102	W. Sixty-fifth	103
104	105	106	W. Sixty-fourth	107
109	110	111	W. Sixty-third	112
115	116	117	W. Sixty-second	118
119	120	121	W. Sixty-first	122
123	124	125	W. Sixtieth	125
			W. Fifty-ninth	



DRAWN BY ADOLF DENGLER



207	202	W. Fifty, Ninth 203	204	<del>202</del> 206	207
208	209	W. Fifty, Eighth 210	211	212 / 213	214
215	216	W. Fifty, Seventh 217	218	219 / 220	221
222	223	W. Fifty, Sixth 224	225	226 / 227	228
229	230	W. Fifty, Fifth 231	232	233 / 234	235
236	237	W. Fifty, Fourth 238	239	240 / 241	242
243	244	W. Fifty, Third 245	246	247 / 248	249
250	251	W. Fifty, Second 252	253	254 / 255	256
257	258	W. Fifty, First 259	260	261 / 262	263
264	265	W. Fifty, Avenue 266	267	268 / 269	270
271	272	W. Forty, Fourth 273	274	275 / 276	277
278	279	W. Forty, Eighth 280	281	282 / 283	284
285	286	W. Forty, Seventh 287	288	289 / 290	291
292	293	W. Forty, Sixth 294	295	296 / 297	297
298	299	W. Forty, Fifth 300	301	302 / 303	303
304	305	W. Forty, Fourth 306	307	308 / 309	309
310	311	Forty, Third 312	313	314 / 315	316
317	318	W. Forty, Avenue 319	320	321 / 322	323
324	325	W. Forty, First 326	327	328 / 329	330
		W. Fortieth			

Thirtieth Avenue

Eleventh Avenue

Tenth Avenue

Ninth Avenue

Eighth Avenue

Seventh Avenue

Sixth Avenue





McNair Morris Square

	2	3	4	5	6	7	
8	9	10	11	12	13	14	
15	16	17	18	19	20	21	
22	23	24	25	26	27	28	
29	30	31	32	33	34	35	36
37	38	39	40	41	42	43	44
45	46	47	48	49	50	51	52
53	54	55	56	57	58	59	60
61	62	63	64	65	66	67	68
69	70	71	72	73	74	75	76
77	78	79	80	81	82	83	84
85	86	87	88	89	90	91	92
93	94	95	96	97	98	99	100
101	102	103	104	105	106	107	108
109	110	111	112	113	114	115	116
117	118	119	120	121	122	123	124
125	126	127	128	129	130	131	132
133	134	135	136	137	138	139	140
141	142	143	144	145	146	147	148
149	150	151	152	153	154	155	156
157	158	159	160	161	162	163	164
165	166	167	168	169	170	171	172
173	174	175	176	177	178	179	180
181	182	183	184	185	186	187	188
189	190	191	192	193	194	195	196
197	198	199	200	201	202	203	204
205	206	207	208	209	210	211	212
213	214	215	216	217	218	219	220
221	222	223	224	225	226	227	228
229	230	231	232	233	234	235	236
237	238	239	240	241	242	243	244
245	246	247	248	249	250	251	252
253	254	255	256	257	258	259	260
261	262	263	264	265	266	267	268
269	270	271	272	273	274	275	276
277	278	279	280	281	282	283	284
285	286	287	288	289	290	291	292

Avenue A

Avenue B

Avenue C

Avenue D

Avenue E

Avenue F

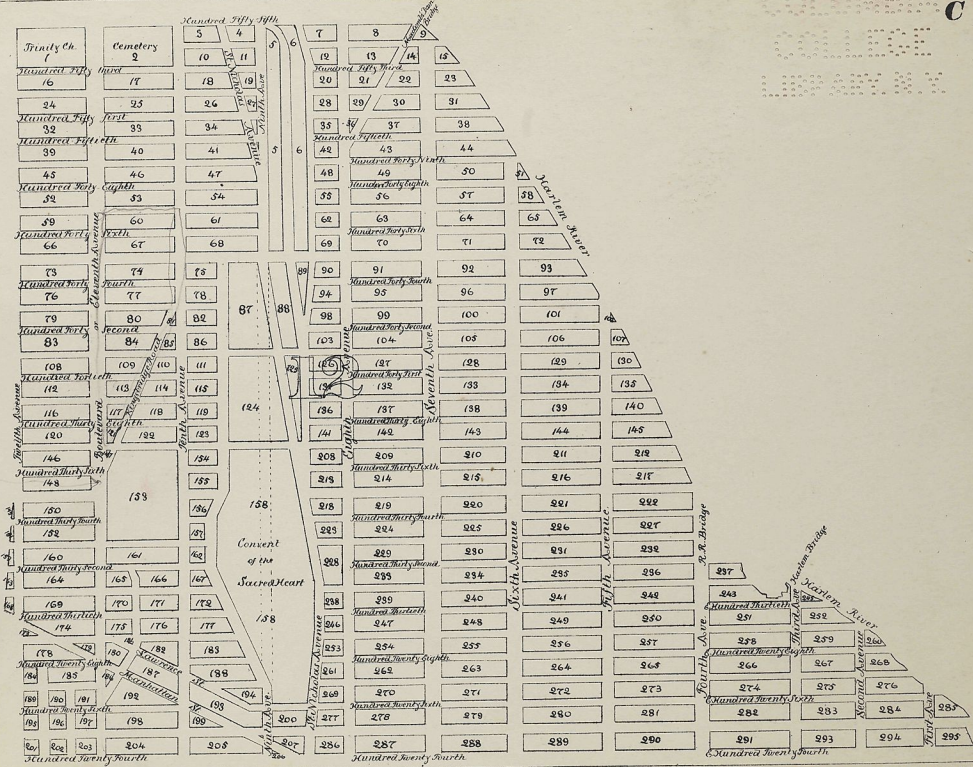
Avenue G





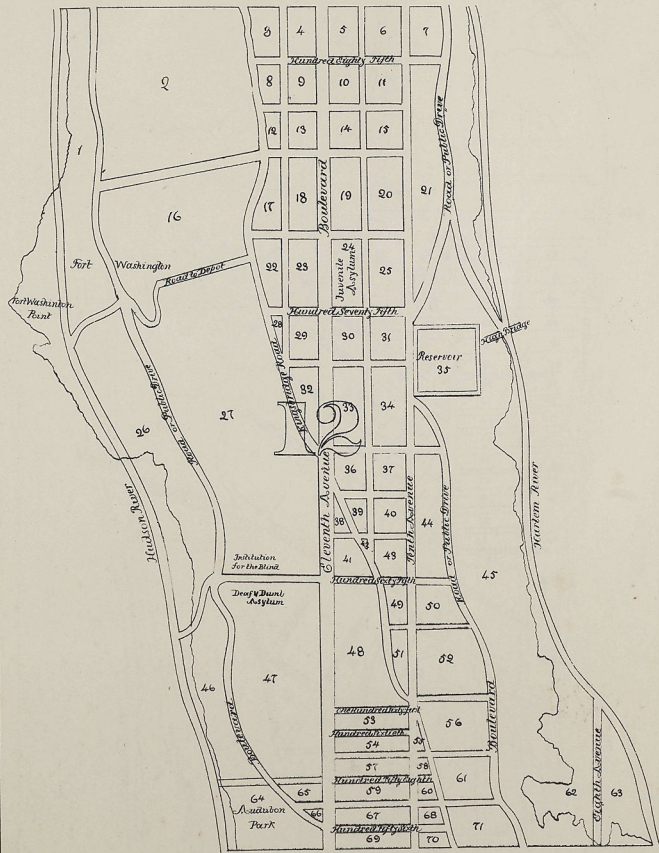










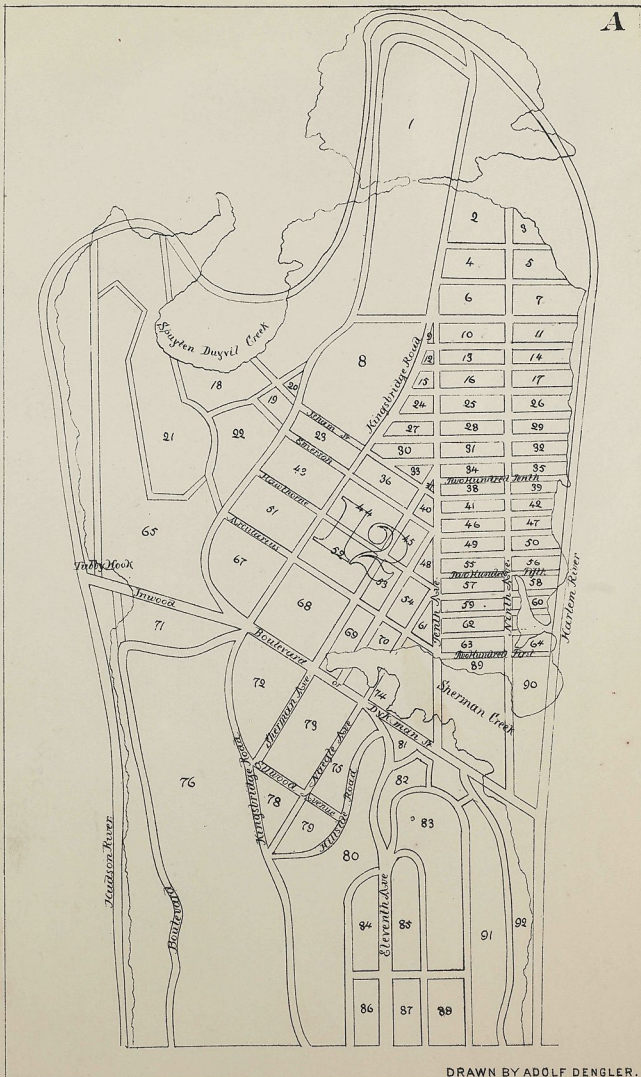


DRAWN BY ADOLF DENGLER.





A



DRAWN BY ADOLF DENGLER.







DUE DATE

EL MAR 11 1988

JAN 24 1990

MAY 31 1994

MAY 31 1994

OLX SEP 30 1996

FEB 15 2000

DEC 20 1998

MAY 31 2000

FEB 15 2000

201-6503

Printed  
in USA

COLUMBIA UNIVERSITY LIBRARIES



0064440630

1 3 6 6 7 4 8  
COLUMBIA UNIVERSITY LIBRARIES



\* 0 1 3 6 6 7 4 8 \*

BUTLER CIRCULATION

DEC 3 1988

DEC 3 1988

