



**Columbia University**  
**in the City of New York**

LIBRARY





A. 15 60. D.

HISTORICAL

**SMOKIANA**  
ETHNOGRAPHICAL.

RALEIGH

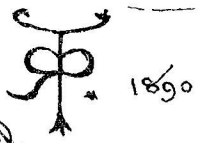
DRAKE



"JIST a draw noo."  
Do you know the mixture?

R. T.

PRITCHETT.



A. 18 90. D

RIGHTS. RESERVED





To ~~YE~~ MEMORIE of  
 KING JAMES. 1<sup>st</sup>. 6

"Counterblaste"

of the past

&

30th. ANTI. TOBACCO-FRATERNITY.  
 of the present day.

The following ETHNOGRAPHICAL.

"PLEBESCIYE"

is respectfully dedicated.

by their well wisher.

The Author & Printer

J.P.



# Y/E PREFACE.

<sup>34</sup> The Courteous Reader. LONDON.

Greeting

The Stream of Conquest has generally flowed from North to South. The Triumph progress of the Goddess Nicotina. has been from West to East. starting in the 16<sup>th</sup> century she has now girdled our little orb with devotes burning continuous incense. The Instruments connected therewith are objects of Historical & Ethnographical interest. hence are brought together authentic Portraits of the "Pipe Family". Briar root and Branches. "No judge from the favor in which they are now held. "at home + abroad" they seem likely to flourish for ever. I cannot close without expressing my thanks to Mr. Bernard Quaritch for placing them before you in their present Garb. -

Your faithful Sinner & Author.

A. D.  
1890

Robt. Peitchett.

## List of Illustrations.



Page	A.D.	Page	
9	Tobacco Plant 1669.	35	Wild Jents Smoking
11	"NICOTIANA" Perser.	37	Equatoria.
13	German Woodcut 1616. A.D.	39	Stanley Expedt.
15	Ricks old Clays.	41	East Africa.
17	Brosley Clays.	43	Bushman.
19	Churchwardens.	45	Soap Stone Pipes.
21	Dutch Pipe Gear.	47	Turkey.
23	German Pipes.	49	Persian. 1669. A.D.
25	Danish + N. Europe.	51	Hookah. India.
27	Algeria.	53	Hookah. Cashmere.
29	W. Africa.	55	Indian Red clay.
31	Sagor Ashantee.	57	Scinde.
33	Dahomy + Niger.	59	Madras.

## List of Illustrations continued.

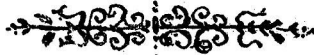
Page		Page	
61	Marghila. Indore.	89	N. AMER. Stone Pipes
63	Yarkand. Asia.	91	Canada.
65	Ground Pipe.	93	Nootka Sound.
67	Assam + Burmah.	95	Arctic Pipes. -
69	China + Corea.		
71	Opium Gaol.		<u>IGNITION.</u>
73	Japanese ditto	97	Sumatra + Borneo.
75	Borneo.	99	S. America.
77	Sumatra + Java	101	England Old + <u>New.</u>
79	Australia.		
81	New Zealand.		
83	New Guinea.		
85	S. America.		
87	N. America.		



# TOBACCO PLANTS



their Varieties.



Although Smoking is generally associated with Tobacco only, yet there are other plants, whose leaves are used for similar purposes. These will be referred to as we come to the different means of using them. Our first Woodcut of Tobacco is from STELLA . . ROMA . 1669. a work of.

D. B  
STELLA  
 ROMA.

A. D. 1669. "IL TABACCO"

TABACCO.  
 LATIFOGLIO.  
 PRIMA specie.



DELLA SECONDA  
 specie.  
 TAB. ANGUSTIFOGLIO.



TERZA SPECIE.



great value. as giving. Pipes. the Hooks of Persia. as well as Plants. but we will start with some of the growths. now most generally known of the "NICOTIANA" Family which is very widely spread over the face of the Earth. that of late made great strides in Borneo + Sumatra.

N. "TABACUM" (The mother of the family)

Height 5 ft. Leaf. 12 to 14". Corolla Pink-

Virginia manilla.

N. "RUSTICA". Height 3 to 4 ft. Leaf. 10" to 12"

Corolla. Greenish into Yellow. Turkey + India.

N. "REPANDA". Small. Corolla white. Havanna.

N. "PERSICA" - or Bombak. all used in Persia.

by the Royal Family. (SHIRAZ tobacco).

N. "AFFINIS" is our Golden Plant with long tube  $3\frac{1}{2}$ " with Corolla white & very fragrant. Habitat. Isle of Pines S. PACIFIC.



NICOTIANA

FRAGRANS

WHITE.



N. TABACUM.

PINK.



A stylized, calligraphic signature or logo consisting of three vertical lines that curve at the top and bottom, resembling a monogram or a decorative flourish.

We are greatly indebted to old German  
 woodcuts for solid information and  
 details of habits & customs of the 16<sup>th</sup>  
 century, which our own people have not  
 handed down to us. take for instance  
 "Hans Sachs." Book of Trades. Had  
 smoking been in vogue, in his day  
 he would have given it - or rather Jost  
 Ammon, would have illustrated it  
 so here in 1616. A.D. we find a sturdy  
 German, blowing a tremendous cloud.  
 It is taken from an old work. now in  
 Frankfurt - viz  
 // Völler von Geilhausen (ULRICUS) "  
 Das ist  
 "Ein. Blumenbuch." "  
 Small Folio.  
 Frankfurt  
 am Main.  
 M. Weipner. Formschneider und Maler. 1616.<sup>A.D.</sup>

VÖLLER.  
 VON GELLHAUSEN.  
 A. D.  
1616.

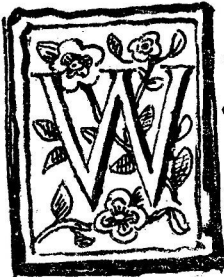
49

*Taback*

FRANKFURT.  
 AM MAYN.  
 —



# Pipes.



I have heard much of late of  
 the "STONE" Period. The "Bronze"  
 Period the "Iron" Period & some  
 one has gone so far as to say  
 this is the "Brass Tin" Period.

on all these scores "SMOKIANA" is strongly  
 represented. bringing forward the "Brass"  
 Pipes of SUMATRA. It is surprising how  
 widely diffused is "STONE" especially Soap-  
 stone. "amongst the following specimens  
 will be found, our "Gourd" Period - but  
 as there is "no place like Home" we will begin  
 with "English clays" of which some are  
 shown on the opposite page, enriched by  
 30 years of habitant years - -

## ENGLAND

RICH  
 OLD CLAYS.

---



1575.  
 A.D.



1689  
 A.D.



FULL SIZE.



1600  
 A.D.

## BROSELEY. SALOP.

The various stamps. & names of early makers. of Tobacco Pipes are most satisfactorily corroborated by the Parish Register. and the families seem to have gone on prospering. but the sickle of Old Time "has been put in &. + old things have passed away. making room for new. The Four stamps given on the opposite Page. are amongst the Earliest known. & of great interest. The quality of the Clay must have attracted the makers to that spot - after the introduction of Pipes to London. which had a Pipe makers Company. A.D. 1619 still continues. establishments at Bow? . The "Old Cock" Tavern in Fleet Street had its own. Token. + its own Pipes.



JOHN  
IAMS

JOHN  
IAMS

1600.

A.D.

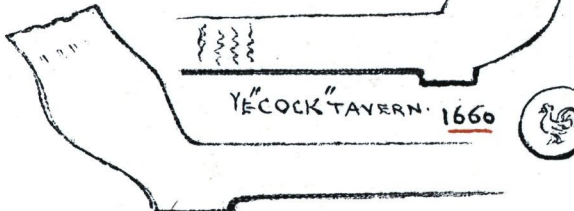
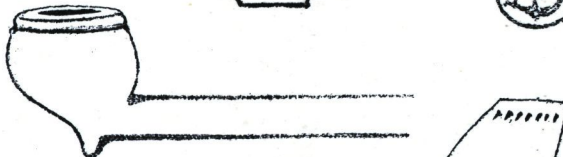
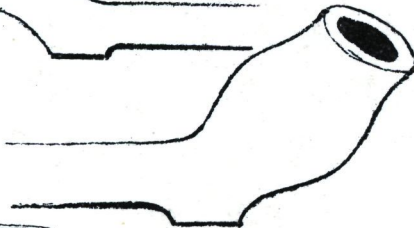
# BROSELEY CLAYS.

A.D. 1590.

# SALOP.



& their stamps.



YE "COCK" TAVERN. 1660



A.D.  
1608

MOR  
RIS  
DECON

A.D.  
1687

JOHN  
LEGG  
1687

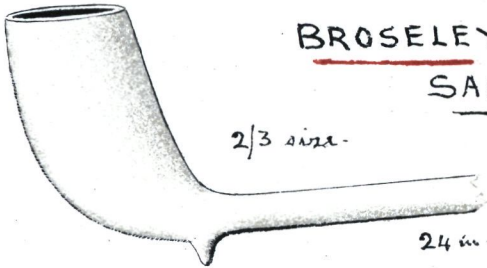


and old London, as revealed in digging old foundations, has yielded a great harvest of Pipe produce. The museum at Guildhall, has a very good collection. The "Churchwarden" Clay was the Pipe of the early part of this century, & is still in the Country. It was considered right always to have a clean pipe, hence they were stacked together in a double row & sent to "The Bake-house", for Purification. The "Irish Duden", originated the pipe "old clay", most probably, the Scots followed with Cutties, & the French with, Fiolets, "bian" Culottes " - of thirty years ago. Milo in the Strand, was the man for "Coloured Clays", which he made his speciality.



THE FAMILIAR  
CHURCHWARDEN  
BROSELEY.

SALOP.



2/3 size.

24 in.



SCOTCH  
CUTTY



"off to the Bakehouse."

OLD ITALIAN.

"STELLA"



A.D. 1669.  
ROMA.

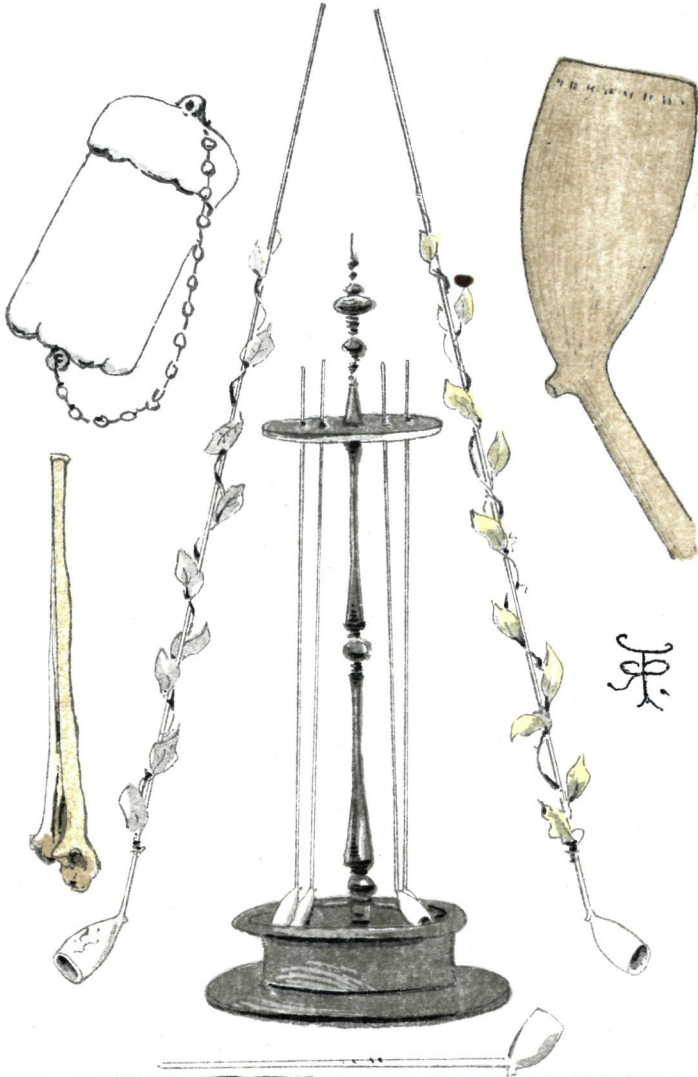


## HOLLAND.

The Dutch have always been great Smokers.

how often does Ostade introduce clay Pipes into his pictures & when they favored us with a visit in 1689. how many records have been dug up from time to time wherever they were located. The Typical Pipe of Holland. is that of "GOUDA" make & the Pipe enters largely into Wedding Ceremonies. thus they have for the Copper wedding. the long clay Pipe of some 36<sup>cm</sup> decorated with Copper leaves. The Silver Wedding. Silver leaves. & The Golden Wedding. Gold. & finally The Diamond. for the 75<sup>th</sup>. now Cigars are smoked by every one. even by little Hollanders. going to School.  
9.A.M.

DUTCH GEAR.

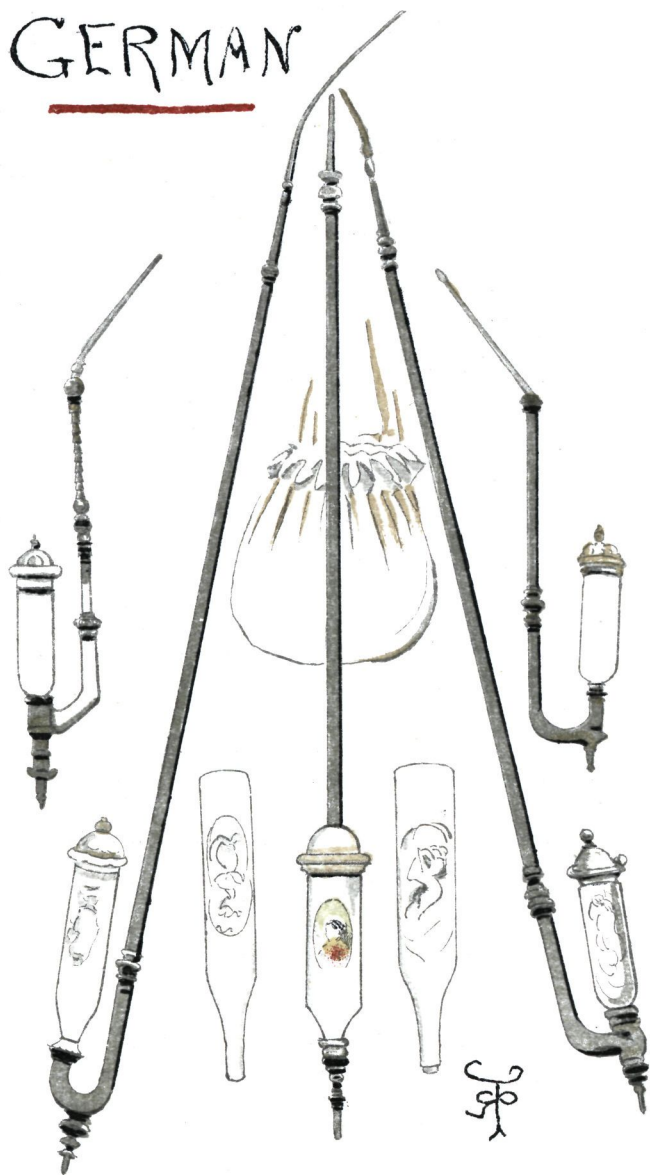


full size.

## GERMANY.

As a Nation of Smokers. The Germans have always carried the palm. & do still. & with them Smoke & Song were ever inseparable. Imagine a German Student without his Pipe. & his Corps Cap. we should not know him. The leading feature in German Pipes is decidedly The long Bowl of Porcelain. generally adorned with some Beauty; on the front of it. in medallion form. The stems are of great lengths. some four feet. or so with flexible tubing. leading up to the mouth piece. These may be considered House Pipes. for travelling. naturally they are shorter. The Tobacco Bags. are objects of great care & interest.

GERMAN



## NORTH EUROPE.

The Island of "AMAGER" near Copenhagen. has retained its costumes + customs. so faithfully. that we have confidence in the Pattern Pipes. which are now still in use. The long one. 4 1/2' 8" is the House. the shorter one 6" in the bowl. contains the allowance of 30 tobacco for the day. This is the constant companion of the out door worker.

In Norway. small blocks of Meerschaum. seem to be most in vogue.

The Hungarian Pipes are of red clay + show Asiatic influence in form.

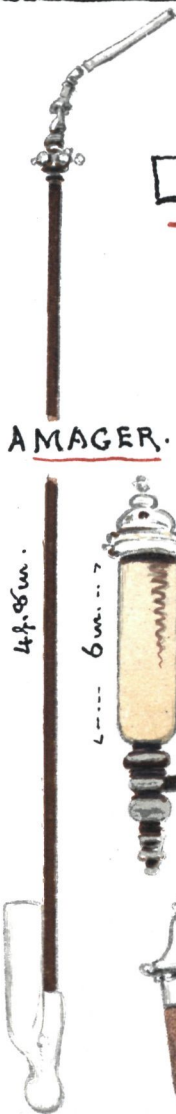
The Byresleda Pipes look very workman like. mostly of wood. with Roebuck horn. introduced as ornament - .

DANISH.

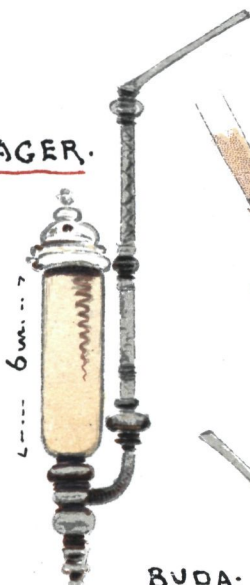
ARMAGER  
ISLAND.

AMAGER.

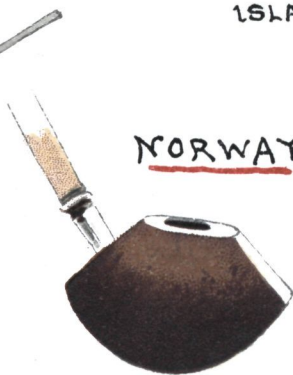
NORWAY.



4 ft. 8 in.



6 in. ...



BUDA-PESTH.

AUSTRIAN TYROL.





## ALGERIA.



We are now in a new sphere of Pipe-land: a kind of slack water between European + Asiatic systems - in which the Turkish type predominates. Thus the upper Red clay bowl on the opposite page is quite Turkish. The handsome Arab Pipe, of a form seen often smoked riding on a Camel. Shows us how decoration will now be introduced in a new form. The Stem of this Pipe is beautiful in Colour. the Ivory, having a very beautiful arabesque pattern upon it. The red colour of which, harmonizes delightfully with the dark wood bowl. The Large bowl is decidedly for House or Bant service.



# ALGERIA.



# AFRICA.

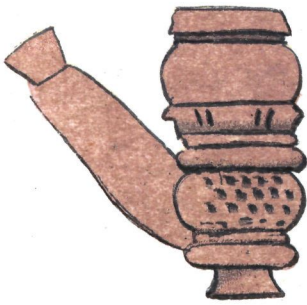


Everywhere in the DARK Continent the habit of smoking something or somehow. has been met with by our most energetic Explorers. even in the dense forests of new Equatoria. The Pigmies find it desirable to have something to smoke. Paul Du Chaille. in 1856. brought to our notice. the Pipes shown at the top of the next page. These are used by The Fano. a fierce Cannibal. tribe. great in the mystery of Iron work. and are generally made of red or very dark clay. The specimen from SANKURU. RIVER. LAT 5° S is of wood very beautifully carved. - The Bone Pipe is very like a Cigar Holder

West  
COAST of AFRICA.



WOMENS

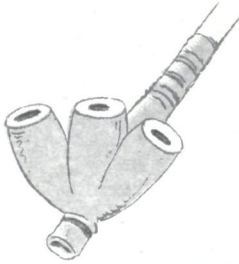


PIPE TUBES  
S. AFRICA

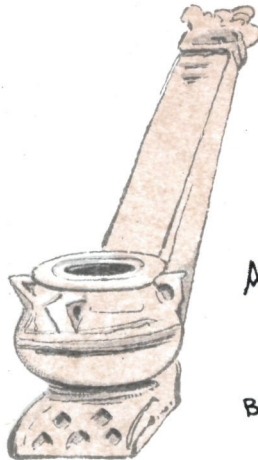
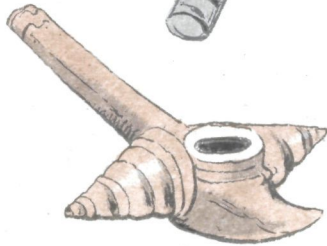
## LAGOS and Ashantee.

The 3 Three Bowls of the dark clay bowl. are certainly a striking object to any smoker.. and again. the small bowl. from the larger one. in fact. "Bowl major" "Bowl minor" - this plurality we shall find in India. still that does not very clearly explain the why + wherefore - unless it emanates from mere love of. benignlike others.. The Light coloured Red Clay of the Ashantee Pipes is very striking - the form of the Bowls still more so. There is a decidedly Classic character about them.. as if started from Roman Lamps. + Pompeian ideas. + then supplied to their Colonies -.

# AFRICA. W. COAST



LAGOS.



ASHANTEE.

BRITISH MUSEUM.  
COLL<sup>y</sup>

# AFRICA

## EAST.

DAHOMEY. is associated in our minds with the most ghastly & cruel scenes of useless blood. shed. sayt TOBACCO is smoked there. and gradually is the Symbol of Peace. asserting its gentle influence & Dahomey is now more humane than when Capt. Burton first visited it. 30 mm we are indebted for the specimens opposite. The long peculiarly formed. bowl. like a "harpenthes" or Pitcher Plant. is of Iron. & has prongs or spurs of Iron. Length of Stem. 33 in. The Hanging tufts. are of Red Indiani character. The upper pipe is carved wood & the double one, Iron.



# DAMOMEY.

W. AFRICA



48 in.

33 in.

Brought by Capt. BURTON.

BRITISH MUSEUM

IDDAAH - LOWER NIGER

## AFRICA

We now come to newly opened up country, for Livingstone is of our time at Bishop Mackenzie on the Zambezi river. also :

The wooden Pipe with the Curious board in front of the bowl is used by the LOMWE Tribe of MAKUAS. on the LUKUGU RIVER which runs into the "LAKE TANGANYIKA" - w. and a very Curious arrangement it is. the front of the board. being elaborately carved.

The 3 or lower Pipes. are large & cumbersome. Used to smoke Wild Hemp. or "Cannabis Indica" sometimes called Banghi. but generally "Bang" - In India we find the same name applied to a spirit. obtained from Palms. into pots & collected in the Dacca.

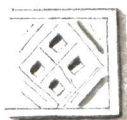
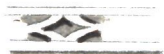
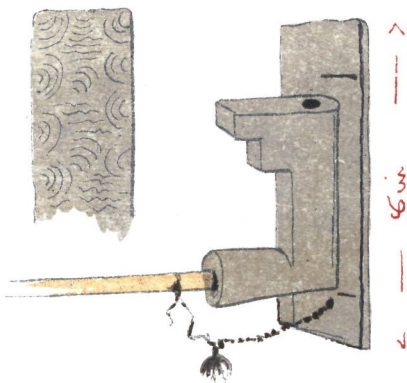


E. AFRICA.

WILD  
HEMP.

(CANNABIS)  
INDICA

LUKUGU RIVER. E.AFRICA.



BHANGI.  
HEMP  
PIPE.

ALOLO TRIBE  
LAKE SHIRWA

EAST AFRICA



BRITISH MUSEUM



22 1/2 in. Horn.

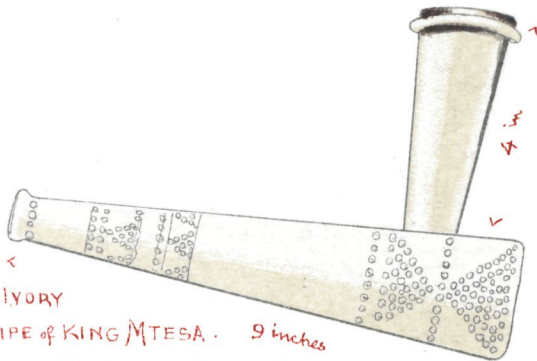
## AFRICA.

The recent explorations in Africa have developed our geographical knowledge so much, that a very special interest is imparted to many of these specimens by giving carefully the situations from which they have been procured - Thus:

The Ivory pipe of King MTESA, from UGANDA, Victoria Nyanza, is from a new country. The ornamentation very refined + delicate. next the long one 8ft. presented by the Khedive to the British Museum. is from the MONBUTOO tribe N.W. of the ALBERT NYANZA. The Souer Gun is from the SHIRÉ River, near the Murchison Falls. + used for Wild Hunt by the Manganja people -

# CENTRAL AFRICA.

## EQUATORIA.



IVORY  
PIPE of KING MTESA. 9 inches  
UGANDA. VICTORIA NYANZA.

MONBUTTOO. TRIBE. N.W. of ALBERT NYANZA.



SHIRE RIVER.  
MANGANJA people  
near  
MURCHISON FALLS.

50.

presented by the KHEDIVE to the BRITISH MUSEUM. 1878. →

26 feet long. - - - - -

STANLEY EXPEDITION.  
Central AFRICA + Equatoria.

For this most interesting page we are indebted to Surgeon Parke, who very kindly took the trouble to make sketches of the bowls + wrote the names underneath. What better authority could we have than this... it makes the page historically interesting. The hard clay of the sticky ant heaps takes a beautiful polish. see the KAYALI bowl. Albert NYANZA. The most original is from AREWENI & ITURI Forest where the little people take the mid rib of the "Banana" which is cellular & by pushing a reed down. they get the bowl required, Cut a hole. + rolling up a piece of Banana leaf. like a Grocers paper insert that for a Bowl. + smoke.

STANLEY. EXPEDITION.

SURGEON. T. HEAZLE. PARKE.

2 in.

FORT BODO.

ITURI RIVER.

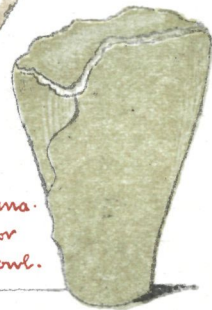
BAMBOO



MAZAMBONIS COUNTRY.  
ALBERT NYANZA



KAVALLI COUNTRY  
ALBERT NYANZA



Banana.  
Leaf for  
Bowl.



AREWENI - ITURI  
FOREST.



✠

CENTRAL AFRICA.  
EQUATORIAL.

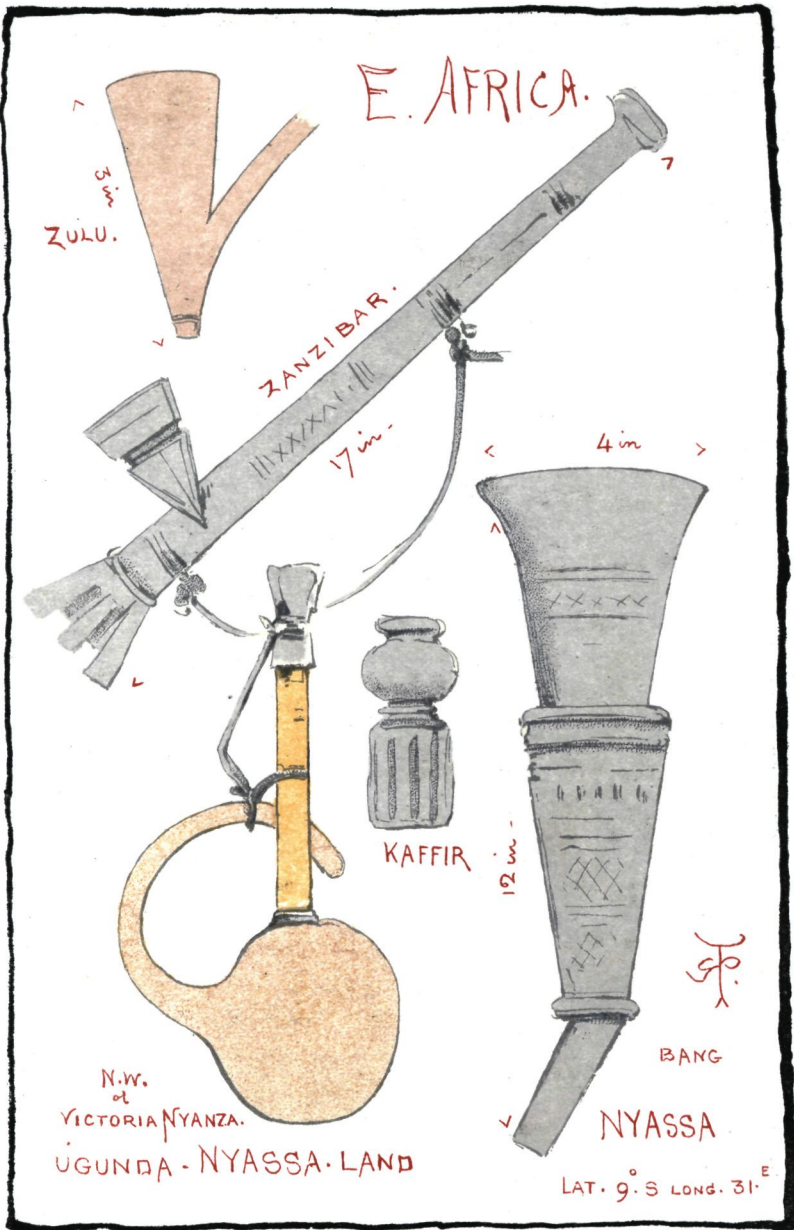
ANKORI - Baked clay  
polished.



# AFRICA

Zanzibar. at the present moment is a center of public interest. and the example given on the next page - is an exceedingly good one. it is of carved wood. that much of the ARAB character in its form.

The large one is of wood also. with good ornamentation. the bowl is 4<sup>in</sup> in diam and the total length 12<sup>in</sup>. This is used for smoking. Wild Hemp. or Bang - and sometimes. known as "LIAMBA" - it is from NYASSA. LATG'S. LONG. 31. E. This is a pipe of mixed features. as the arrangement is strongly allied to the Bushman on the next page. it is however from N.W of Victoria Nyanza. UGANDA. NYASSA LAND. The bowl is of dark clay. with a gourd body. HABITAT. doubtful.



LIAMBA. or Wild Hemp. CANNABIS. INDICA.

BANG or BANGUE. SMOKING.

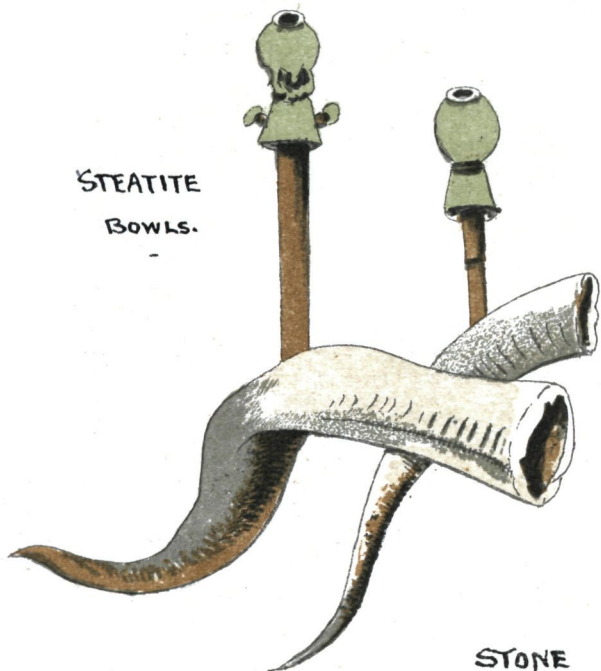


## BUSHMEN · S. AFRICA.

Now we arrive at the full swing of the  
 Stone Bowls of Soap Stone or "STEATITE"  
 and the link with the East "UGANDA" Pipe  
 will at once be recognized. The whole  
 machine is most cumbersome. The  
 size therefore - The Horn being some 18"<sup>in</sup>  
 must make it bad for Bush work. altho  
 the tube can be unshipped most read-  
 ily. The Stone Bowls are carved  
 with great care. The favorite form  
 reminds us of the maces, or "Mantel de  
 Fer" used in the real Iron Period. -  
 Here is found also the Duplex Bowl.  
 also in Steatite.

Bushmen. S. AFRICA

STEATITE  
BOWLS.



STONE  
BOWLS

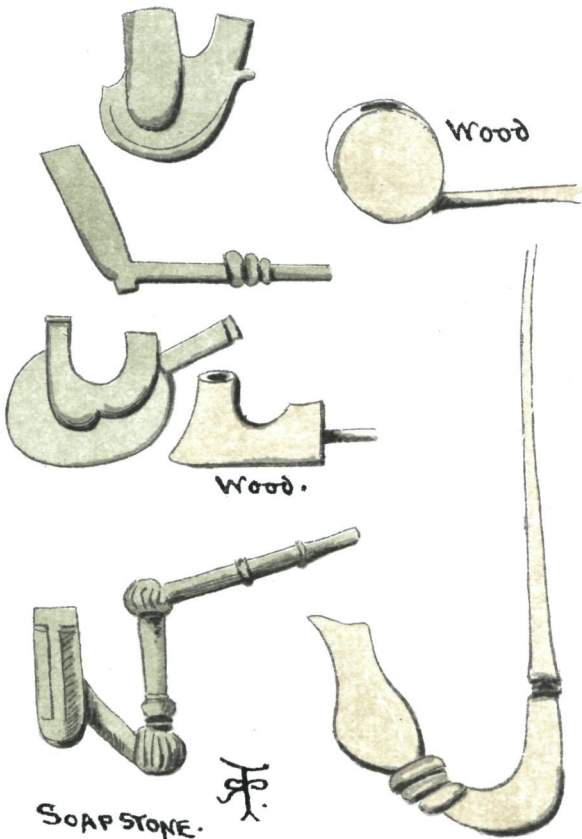


## SOUTH AFRICA.



The "Streatite" bowls now show decidedly European influence, altho the most striking feature is the under disc, which is probably added to give strength, as the Streatite itself is very friable. Its form reminds one of the inverted comb on the skull of a Gorilla, which is very African. These specimens like many others, are from that great Store House of information The British Museum, which happily secured many of the interesting examples collected by the late Mr. Bragg, F.S.A. We can but regret that so complete a collection should ever have been dispersed - . *Exc Transit.*

SOAPSTONE Pipes. S. AFRICA.



SOAPSTONE.

BRITISH MUSEUM.

Wood  
—

# TURKEY



Turkists tobacco is such a familiar term. so comprehensive in its light varieties. that Turkists pipes must at once be called "CHIBOUQUES" + HOOAH'S.

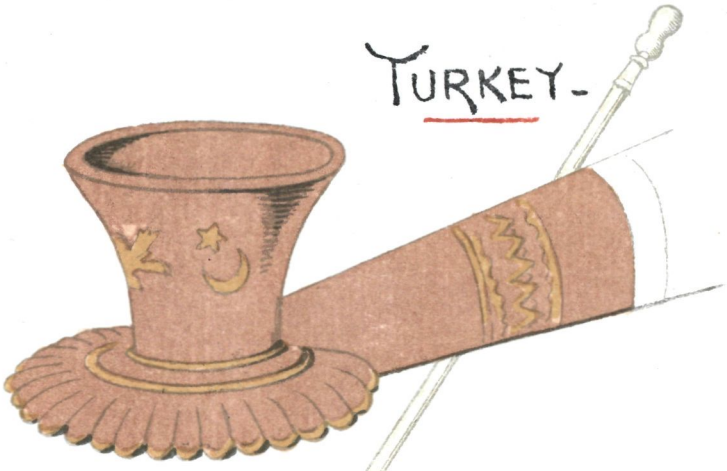
The red clay bowl. of the former. is generally 2 in. in diameter. The stem. of Cherry. or of Jasmine. 5 ft long. when the bowl is formed. it is covered with thin paper. & prepared for lighting.

The Smoker. at a range of 5 ft gives the signal - the light is applied -

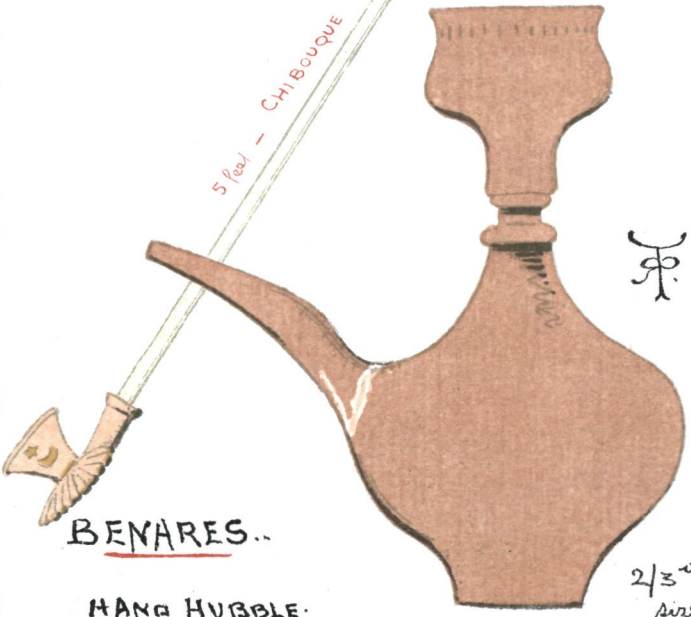
The mouth. piece of clouded amber. is very rounded & therefore only fit to the lips. . The Red clay

Handubble of Banaras is very simple.

TURKEY.



5 feet - CHI BOUQUE



BENARES..

HANG HUBBLE.

2/3<sup>rd</sup>  
size

## PERSIAN.

A. D. 1669

"HOOKAH."

STELLA. of ROME. here is again useful to show us the "Hookah" of Persia in his day. His book was published. 1669. and as travelling from TEHERAN to the HOLYCITY. was less rapid than now. adays. we may fairly accept this illustration as representing a well-established object. The action of the "Hookah" or "bubble" is to draw the smoke through the water - also cool & purify the fumes of the Tobacco. Being made of Glass. This is called a "SHISHEH" & in it is smoked. the Persian "TOMBAK". exclusively grown at CHIRAZ. is the best. & consumed by the members of the Imperial family.

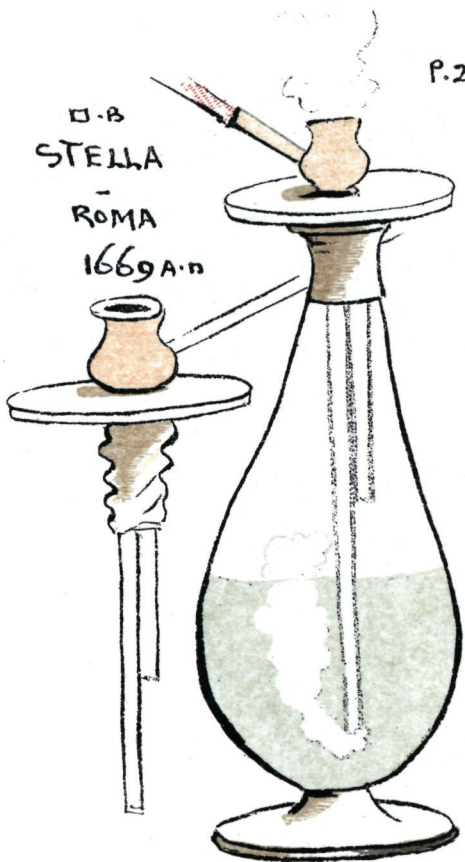


PERSIAN.

Hookah

P.213.

D.B  
STELLA  
-  
ROMA  
1669A.n



SHISHEH.  
or glass. for TOBACK. Tobacco  
"CHIRAZ."

# INDIA.



The Persian Fashion doubtless soon took India by storm. The Maharajahs found in Hookahs. a new object of luxury & one capable of unbounded decoration. in fact a new field for native talent to embellish & enrich. The upper bowl which contains the tobacco. is called

" The Chillum. "

whatever the material whether richly embossed. or the simple red clay. which tries ones lips. at BENARES. These State Hookahs. are of considerable height. running to. Thirty inches + Three feet. . with coils of tubing. which terminates in a silver mouth. piece.

THE GREAT  
HOOKAH  
-  
of INDIA  
SILVER



## CASHMERE.

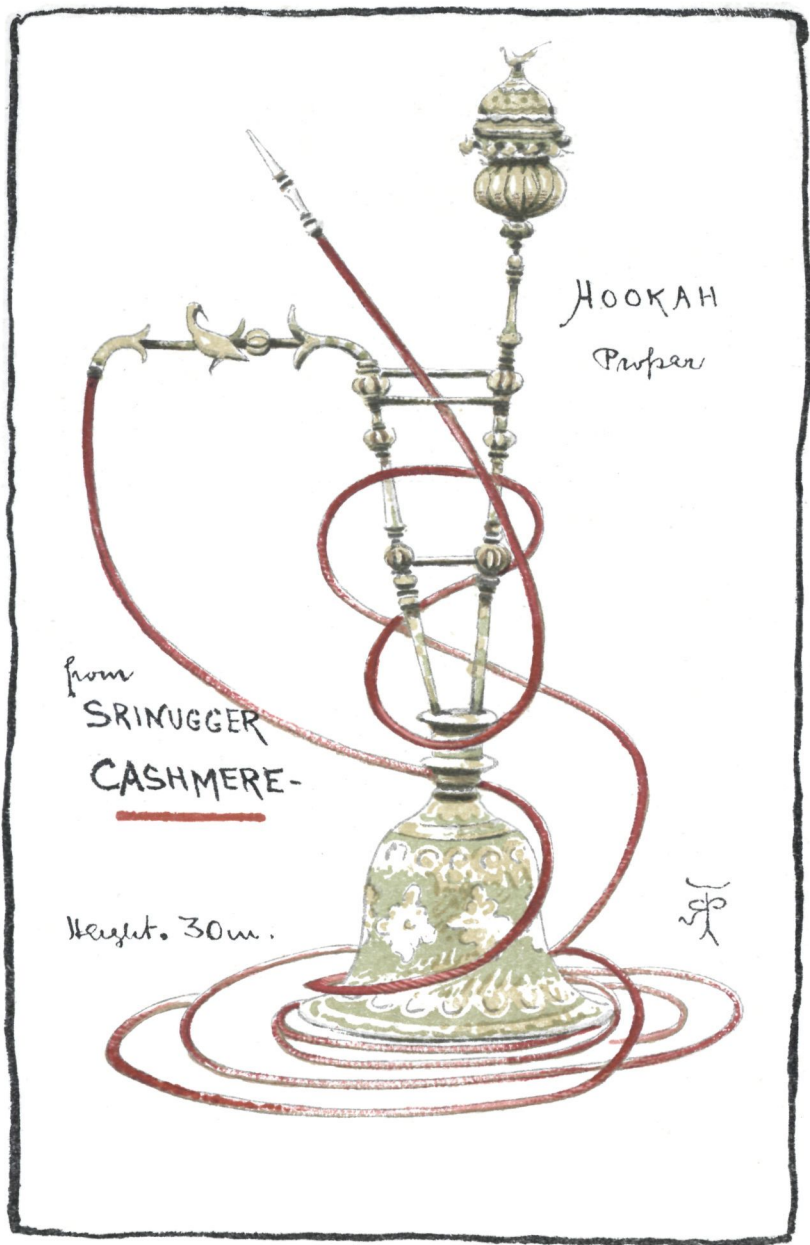


Naturally one would expect to find something of special beauty in the fine collection of The Indian Museum, where the art of the various Provinces is so well represented in all kinds of metal work - beautiful form & rich colour.

SRINUGGER. CASHMERE. yields a very lovely specimen of a Hookah. Copper gilt, with very rich deep blue and green enamel produces a very noble result of harmonious colour. The "CHILLUM" is a choice work of art. & crowns a very fine work of

CASHMERE ART

Height. 30 inches.



## INDIA.

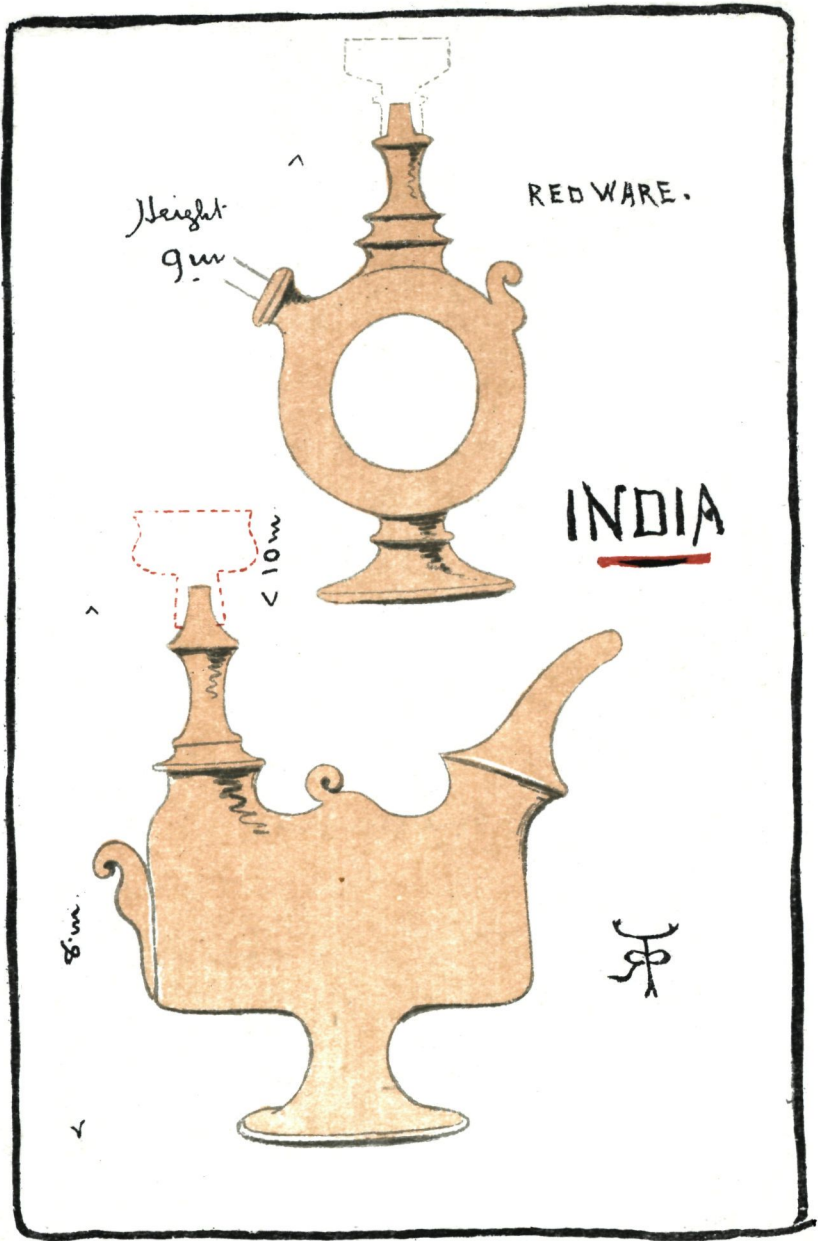


Of all the dreadful materials ever introduced in any land, to the mouth of a smoker. The Red clay of India is certainly the worst the roughest.

Both these examples, are Hand Hubble-bubbles, or HOOKAHS, used by the Natives in India, and the Red dotted lines shew where the Chillum to carry the tobacco is fitted on.

The sizes are given, in each case, otherwise the proportions would be a dead letter. The Tobacco, if tobacco at all, that is smoked in these specimens, is of the roughest description.







## SCINDE.



This is one of the Giants of the Red  
 ware Race in India. 16 inches in height  
 and is used in this North west Province  
 as a Village welcome to travellers &  
 is generally found in the DAK Bungalow.  
 In some parts of India, a native  
 may be seen, with his Public "Hookah,"  
 all aight ready for the passer by, to  
 take a few whiffs - on paying a "consi-  
 deration" for the privilege, refreshment.  
 The sower form, was given to the  
 writer by Dr. Watts, it is used by the  
 Hill Tribes of "CHITTAGONG": & was  
 brought over here for the Colonial Exhi-  
 bition in 1886.

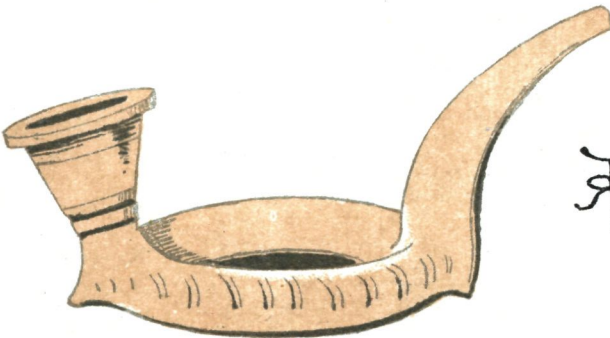
SCINDE

HOOKAH

Red Ware.

18 in. high.

Village  
welcome.



<

4 1/4 in

>

CHITTAGONG.

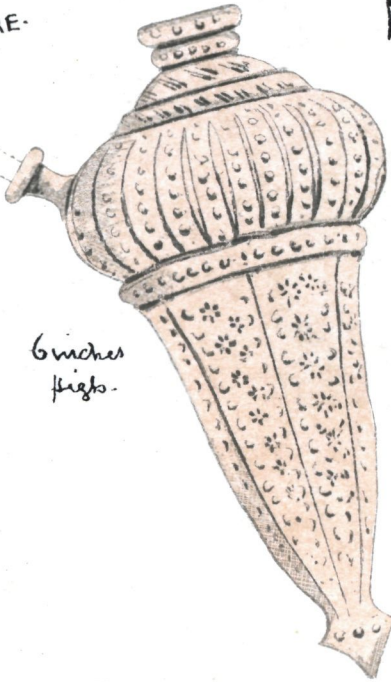
## MADRAS

As we are now leaving the "HOOKAH" family + coming to the "NARGHILES" it will be well to emphasize the distinction between the two - which is this - "NARGHILE" is the native term for Cocoa nut. hence all smoking mediums. of that kind. such as must be laid down + will not stand erect. are called "NARGHILE" especially if Cocoa nut shape. All "Hookahs" stand by themselves. This bowl from N. ARCO MADRAS. is made of a Bronzed Ware. somewhat heavy. but good form. - The Five topped Chillum. is only seen in the Bazaars. not in general use.

Browled  
WARE.

N. ARCOT.

MADRAS



6 inches  
high.



3 1/2 inches high

CHILLYM.

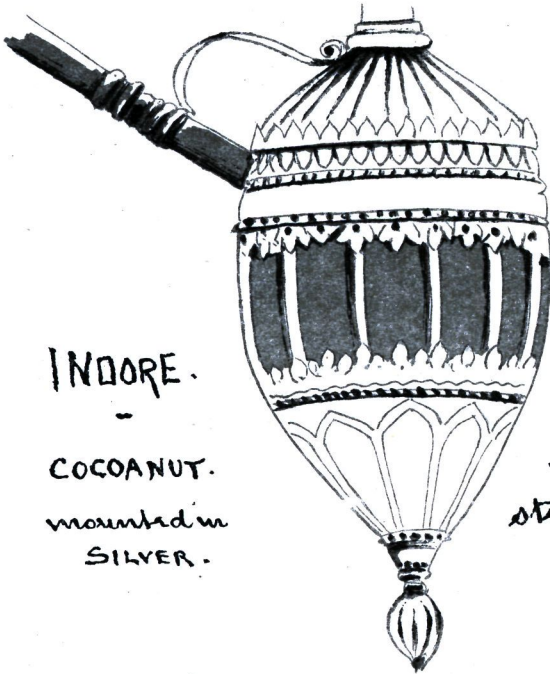
## PROVINCE INDORE.



This is a true, good & faithful representation of the "NARGHILE" Family, a real Cocoa nut pipe, mounted in Silver, with good native work. The shell has evidently been selected for its graceful shape. The native artificer has done his work loosingly. The "Chillums" beneath are of different material. That on the left is of Silver, & although Sir Walter Raleigh smoked a pipe of silver still in these days in Europe all metals are avoided for bowls. The Chillum on the right is from "LUCKNOW", perforated rim of glazed Pottery. Biscuit colour ground, with green pattern & Ruby spots or knobs.

" MARGHILE.

5 inches  
High.



INDORE.

COCOANUT.  
mounted in  
SILVER.

Wood  
stem in.



CHILLUM.  
BENGAL

SILVER  
6 in.



Stand  
Pottery  
LUCKNOW.

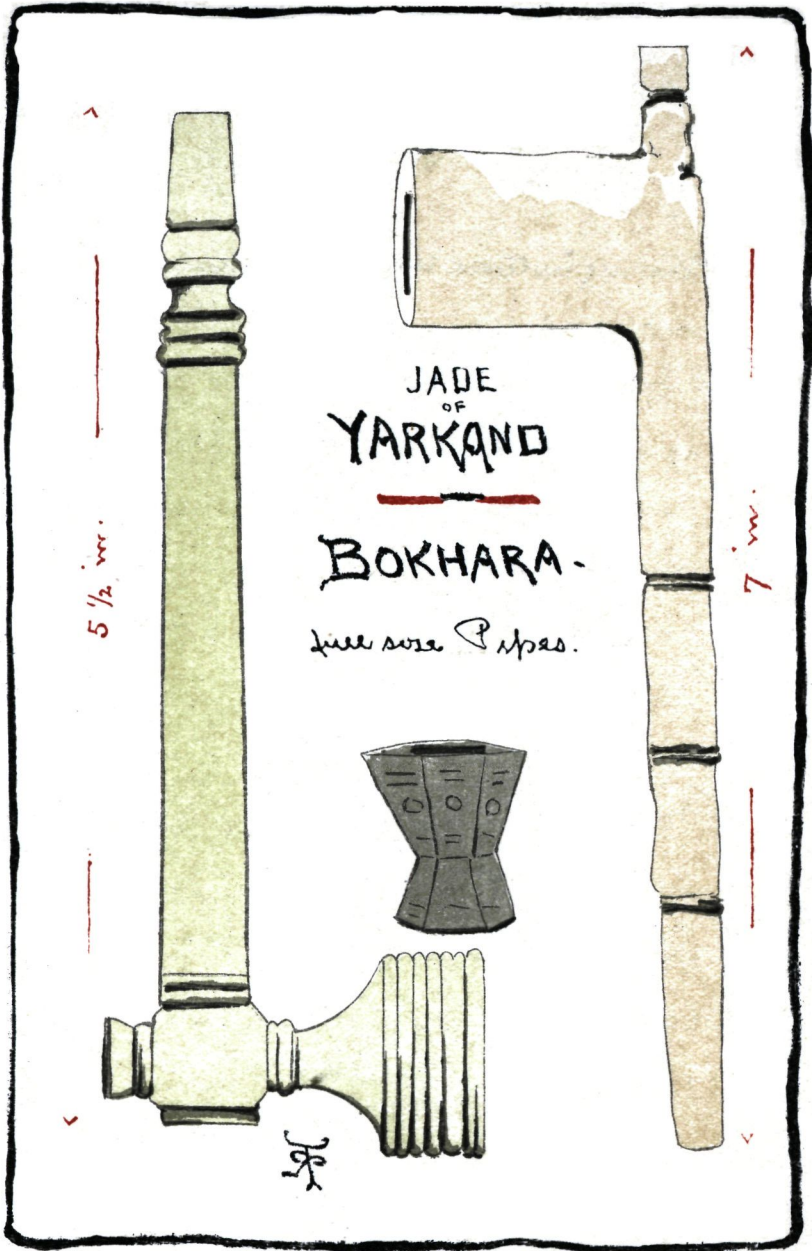


## YARKAND.



As Pipes are made out of every conceivable material. we cannot be surprised. that where "Jade" has its habitat. that there its services should be enlisted + utilized - so it is: The "Yarkand" River has much Jade. but to work it above it for a pipe. must not only involve great care + consummate skill. but necessitate rarity of production. The wooden. more humble contr. here. is much more general + very easily made anywhere. The Dark clay "chillum" belongs to a Gourd. Pipe.





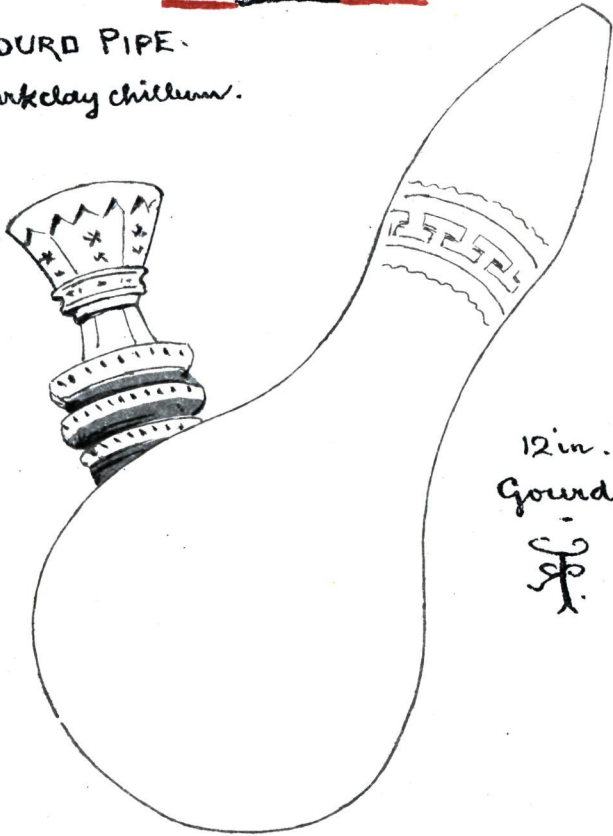
## YARKAND to BOKHARA.



Having noticed the exceptional Jade we come to the more common Gourd Pipe. in fact our "Gourd Period" they are doubtless received with favor on account of their lightness. and the example given is from one in the India Museum where they seem to be of much the same character. The Gourd. of about 12 inches in length. The wooden Bowl carved cursorily turned in rings & the Bowl itself of dark clay. The ornamentation is in some cases very elaborate. in this case a mixture of Persian & Chinese.

YARKUND · BOKHARA.

GOURD PIPE.  
darkclay chillum.



12 in.  
Gourd



mixture of Persian + Chinese ornament.

INDIAN MUSEUM.

## ASSAM · KHYBER & BURMAH.

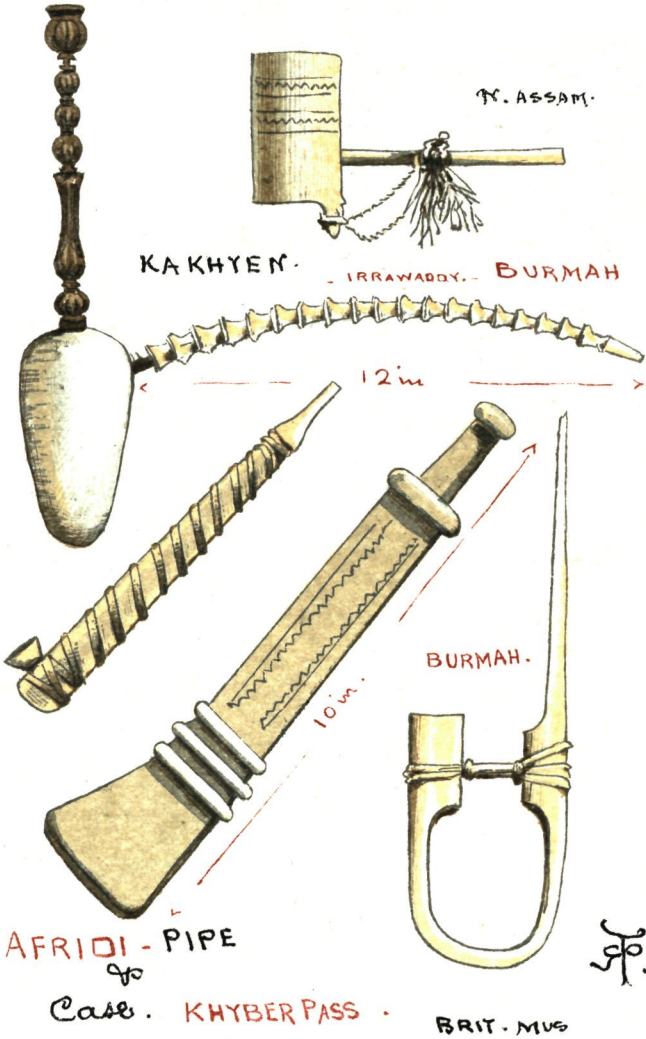


Bamboo is wonderfully useful in so many ways & now it comes before us as the very simplest of Pipe bowls. The joint forming the base. This is north "Assam".

The Pipe of the AFRIDI tribe at the South entrance to the KHYBER PASS. has a very small brass bowl. Two pieces of wood are scooped out for the bore. & bound together with leather. This pipe is promoted to a wooden Case. with carved ornamentation

The Pipe of KAKHEN. N. IRRAWADDY RIV. BURMAH. has a very long bowl. The lower held in the hand. & the bent Bamboo example is so formed to be carried on the arm.

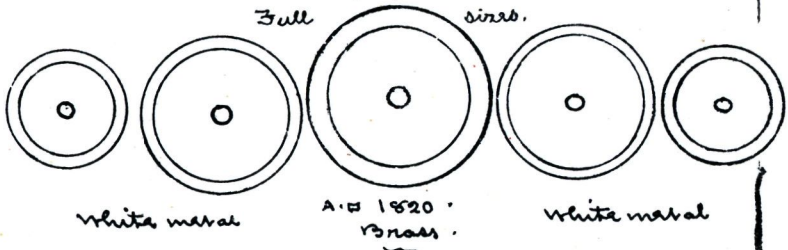
# ASSAM.



## CHINA & COREA.



Still working to the Eastward. we come to the land. the ancient land of Old China man; a land of small bowls. & jade mouthpieces. & water pipes in the shops for the unavailing of undecided customers. and for the more definite explanation of small bowls. the full sizes are now reached here. for preference... Diam.



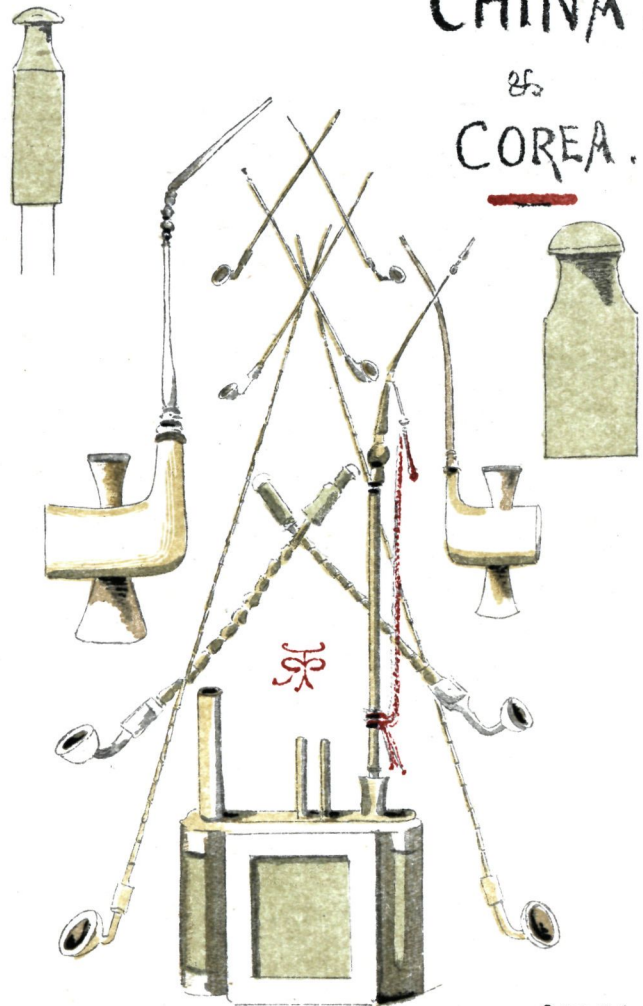
The Pipes of Corea have longer stems & the bowls are flatter as shown & they are brass. -



CHINA.

&

COREA.



COREA.

BRASSEY MUSEUM.



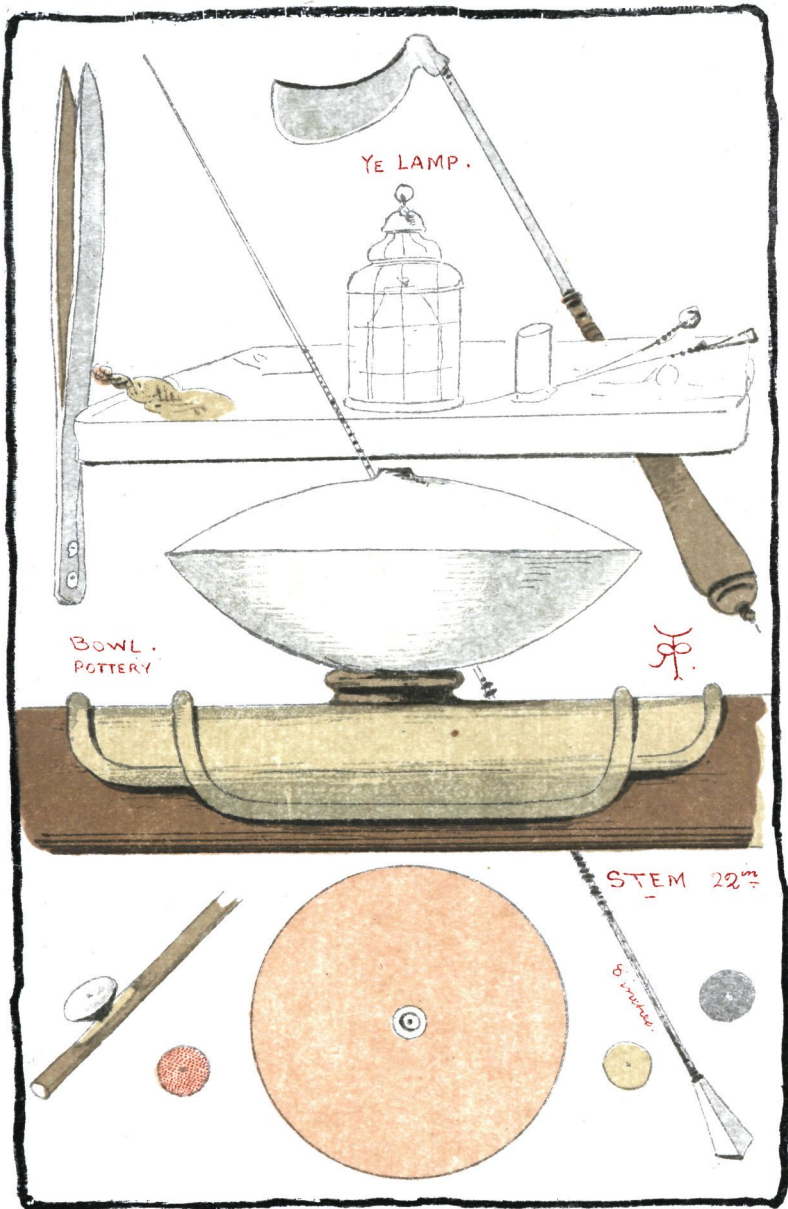


## OPIUM

This is a serious matter to approach, especially as it has a very bad character. —

and has been black balled all round. & generally tabooed. After careful research, & unbiased study of its merits & demerits, we must confess that it is unduly maligned, as the most useful of Colonists, The Chinese, work in all the hottest & most unhealthy parts of the world. <sup>of</sup> are generally very healthy, which may be attributed to the moderate use of the so called Demon. OPIUM. The largest employers of Chinese labour never object to the use of it: it is made from the White Poppy! PAPAYER SOMNIFERUM."

YE OPIUM. SMOKE.



## JAPAN.



This most delightful country with its kindly inhabitants are great smokers in a small measure, if the regulation size of the generally used bowl be taken as a standard. Many people fancy that the little Japs. bowls the real size being thus -



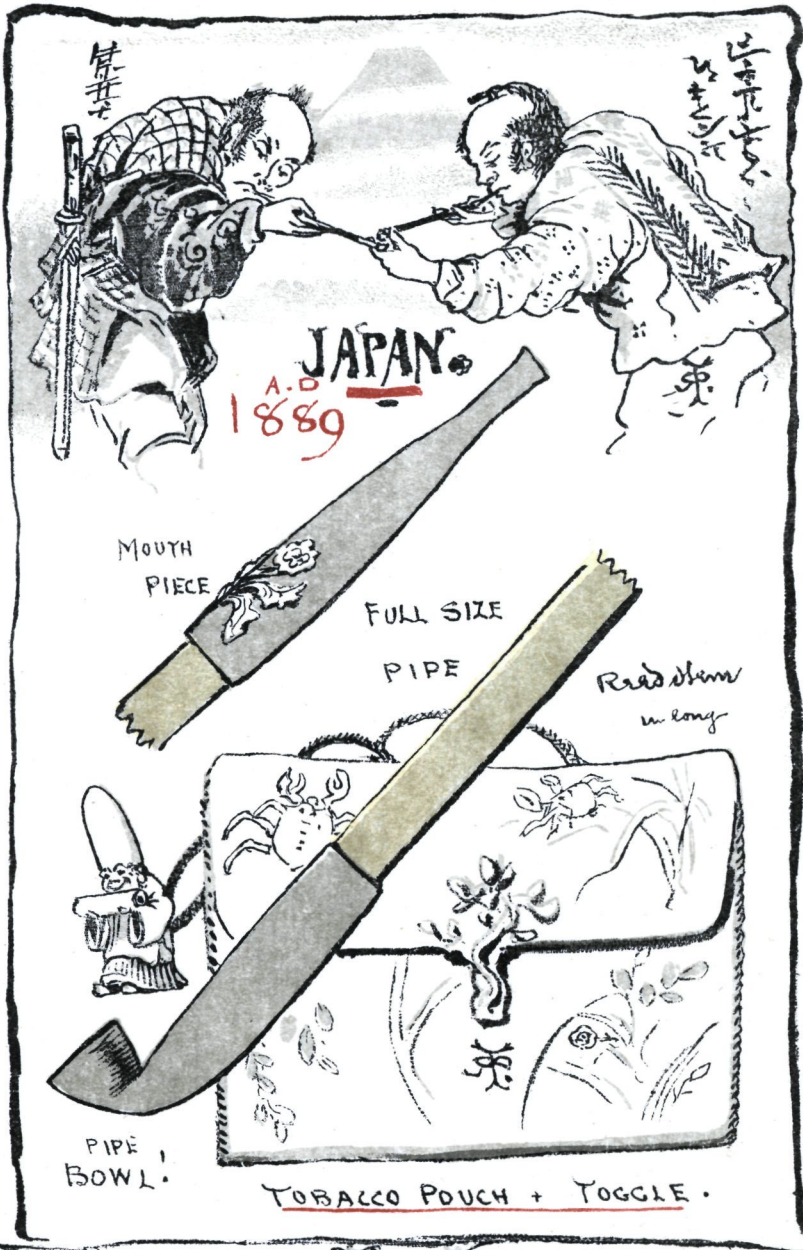
are used for Opium -

what all. The Tobacco they use is very light in colour, very fine cut indeed.

The full size of the general pipe is given on the opposite page at the foot.

Their Tobacco pouches are very artistically worked + ornamented. Their

Pipe cases, suspended from the Girdle by carefully carved "NITSUKES", are  
lovely.



JAPAN  
A.D. 1889

MOUTH  
PIECE

FULL SIZE  
PIPE

Read stem  
in long

PIPE  
BOWL

TOBACCO POUCH + TOGGLE

FULL SIZE METAL PIPE

## BORNEO.



It always adds very greatly to the value & interest of any object for a collection. if it has been well used & especially if acquired from the original owner when using it. Such was the case with the specimen of Dyak Pipe & Tobacco Box now given. The bamboo stem is rather large according to our ideas in proportion to the Bowl. The Dyak is equal to the occasion & regulates the draft by putting dry grass therein. The wooden Bowl is very small. The wire at the side is to slip into his girdle. The Tobacco Box is a very rich brown. the outer skin of the Bamboo. being cut away to shew the pattern.



# BORNEO.

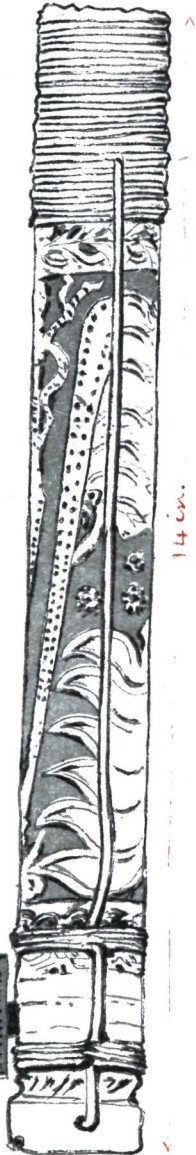
A. D. 1889



TOBACCO BOX.



Pipe of Dyaks.



# SUMATRA.



The Java museum at Batavia is a grand collection. one of the most in structure from the care with which it has formed. the admirable Catalogues well compiled. SUMATRA is of course well represented: The ACHEEN section a little thin. The huge brass pipes from Batak.landen. are very welcome. The British museum has one a little longer. than the Java specimen. The Pin cushion arrangement on the wooden bowl. for the Pricker to be stuck into is very original. The steel at the end of the pipe is original also.

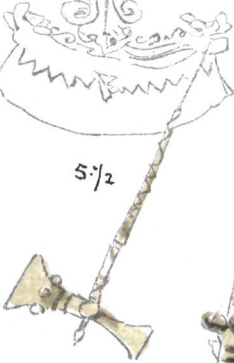
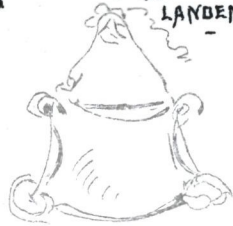


# SUMATRA

BATAK =  
LANDEN.



5 1/2



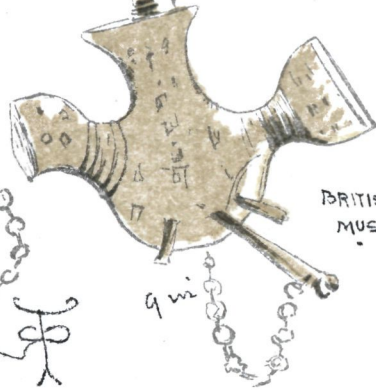
34. 6 in



27. inches



5 1/2



BRITISH  
MUS.

9 in

BRITISH MUS.

JAVA MUSEUM BATAVIA.

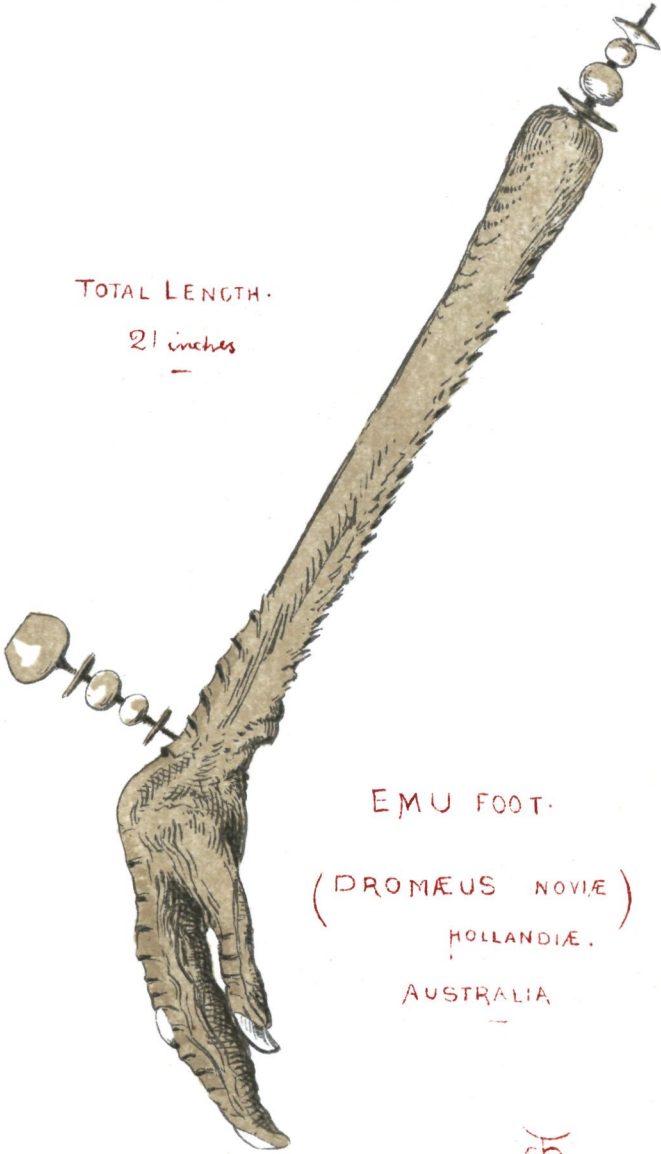
## AUSTRALIA. NOV. HOLL.



NEW HOLLAND, aborigines have not been found worshippers of the Goddess "NICOTINA." also a sort of Wild tobacco was discovered near Port Jackson. - The European culty came in with the Gold Digger. this plug tobacco - in vain have we sought a native Pipe. - but we have one now before us, adapting Nature's work to a new use for man's convenience. The K.M.U. (Drummond. NOVIÆ HOLLANDIÆ.) is requisitioned to Heathen China or more likely MALAY. has produced the Smoking apparatus on the opposite page.

TOTAL LENGTH.

21 inches



EMU FOOT.

(DROMÆUS NOVIÆ)

HOLLANDIÆ.

AUSTRALIA

SP

## New Zealand.



Pipes seem to be a general register of the art of the Country in which they are made. and in this case it is especially useful. at a transition period like the present. as when this class of ornamentation is fast passing away.

This carved work on the basis of a real Buar structure. assumes a new type below the carving. as it goes off as a spike to stick into the ground. like a livestock of old when the matches were ready burning. The wood of this example is very hard. takes therefore a splendid polish. again "The British Museum" has saved a good specimen.

## ANTIPODES

BRITISH MUSEUM.

IRON WOOD  
—NEW  
ZEALAND( 30 stick  
into the ground. )

17 1/2 inches.

## NEW GUINEA.



Bamboo is the material now in vogue, and the mouth piece is cunningly arranged by making a small hole at the joint for the draught bore. The Tobacco tube which cannot be called a bowl, but rather a cigar or cigarette holder, is always at right angles to the thick stem, which averages 14" + 15" in length. The ornamentation like that of "CHINAM" cases, is very delicate & refined. The South Pacific affords us a shell pipe, and from SAYO + the SOLOMON ISLANDS, we have a very simple contribution. One would have expected colour from them, certainly — as well as from New Guinea

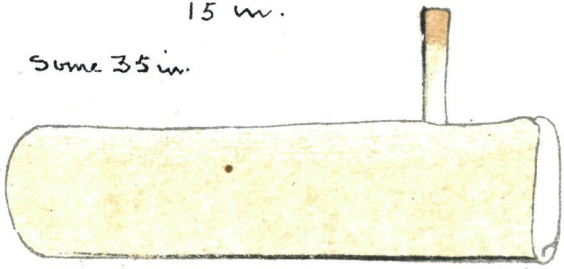


NEW GUINEA



15 in.

Some 35 in.



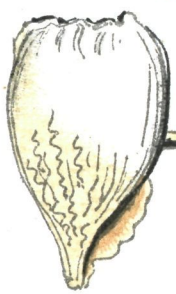
14 in. FLY RIVER: NIG

MELANESIA

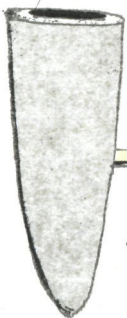


13 in

13 in



SHELL PIPE.



SOLOMON ISLANDS.



SAVO

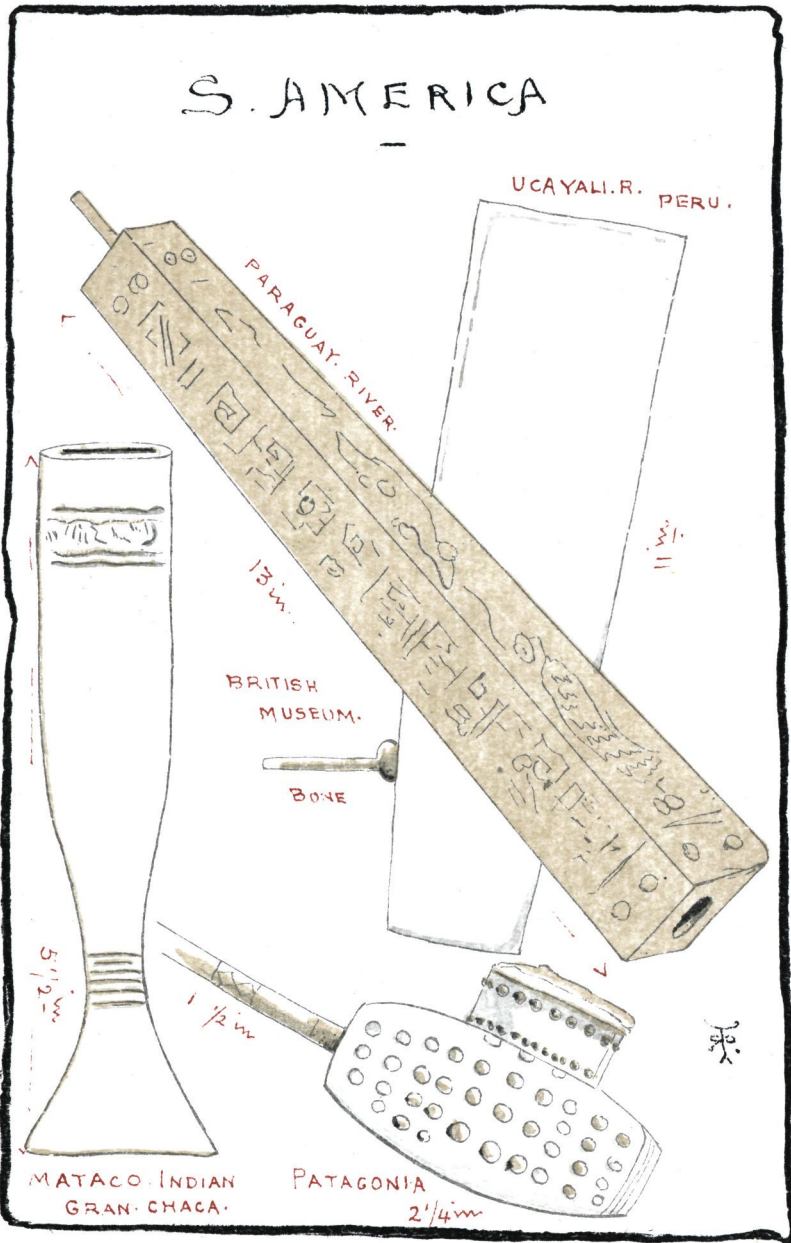


## SOUTH AMERICA

 Paraguay River.

The Spaniards influence in South America has not been likely to contribute to the development of Pipe smoking. but we find native specimens of considerable interest beginning from the South. in Magellan Straits. The Patagonians use the small short form which was in Mr. Bragg's collection. above that is quite a new feature a square pipe of 13" in length used on great State occasions - the sides ornamented with a Key pattern + steps as on HUACA POTtery in Peru. The large bowl with small bone mouth piece is from River UCAYALI - Peru. + First tail of wood is from MATACO Indians. GRAN CHACA

# S. AMERICA

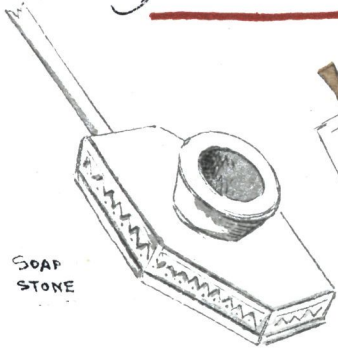


## NORTH AMERICA.



We have now come round to the original home of Tobacco & Smoking: to the Land of the "CALUMET of PEACE" & the "TOMAHAWK PIPE." & where Sir John Hawkins & Raleigh, Drake first saw the "Weed" in use. The despisers of the "Weed" may chuckle, may they hear the old Proverb "that all Weeds grow apace." for it has grown & must be very infectious. nor is there any falling off. for "Steamers" go & there the Goddess NICOTINA. will surely take root. such is the experience up to the present time -

# N. AMERICAN INDIAN

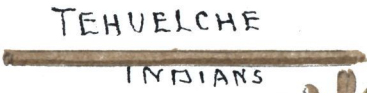


SOAP  
STONE



PARAGUAY  
- AMER. S.  
=

TOMAHAWK  
PIPE



TEHUELCHÉ  
INDIANS

PATAGONIA.

S. AMERICA.



BRITISH MUSEUM

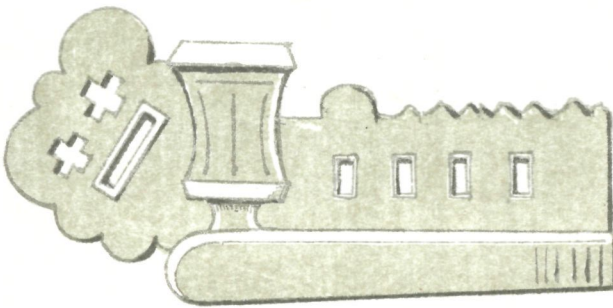
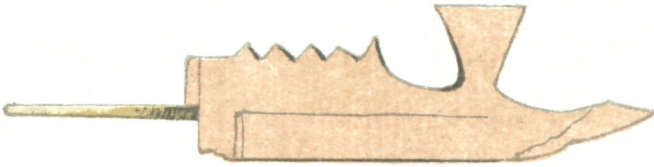
CAYLIN & CO. LTD.

## N. AMERICA.

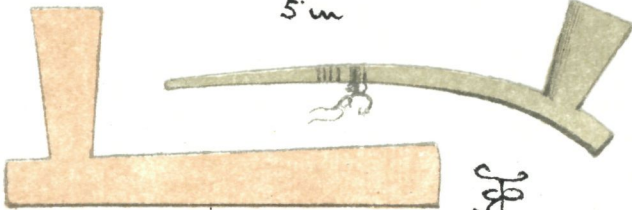


There is hardly room to do justice to a good North American "Pipe of Peace" on these small pages. but those who are really interested in the Pipe customs. Functions of the Indian tribes will derive much pleasure & information too from consulting "CATLIN'S" works on those subjects. The best pipes have flat stems. much ornamented. the Bowls of elaborate design are very quaint & original. the simpler ones are red. the more curious in a dark slate. + a kind of green stone. The British Museum has naturally a very fine collection of all the varieties of both materials -.

NORTH AMERICA.



5m



9m.



Flat stems for Pipes.



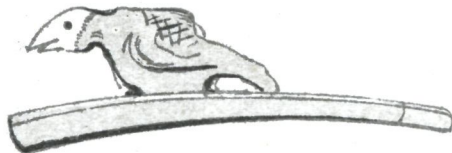
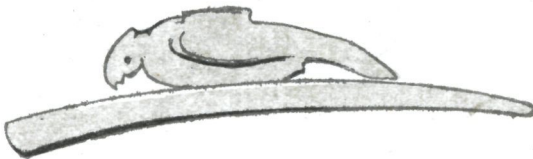
## N. AMERICA.



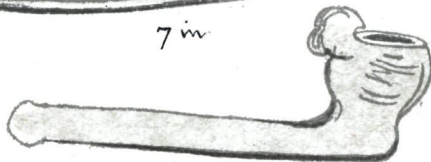
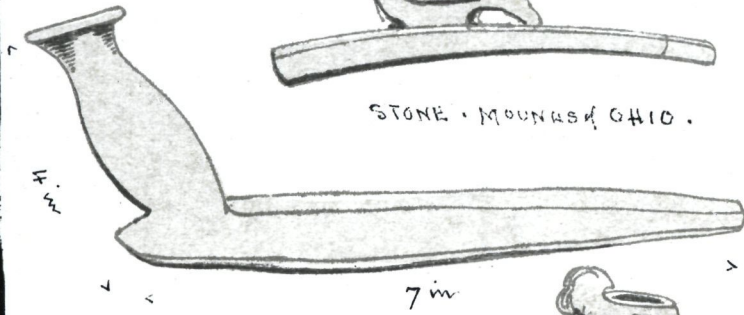
The Indian graves have supplied specimens of very great antiquity from all parts of N. America. and a fine collection of MOUND PIPES. was presented some years ago to the City of Salisbury. Those on the opposite page will give a general idea of the character of these great antiquities. in which the bird is a prominent object. probably some sacred bird - in vogue amongst the tribe at the time they were made. but we must not surmise. "FACTA" "non Verba" is true ARCHAEOLOGY.



N. AMERICA.



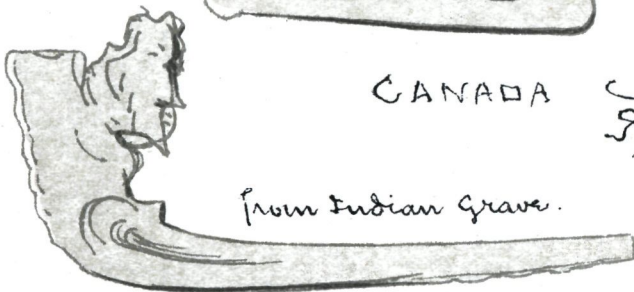
STONE - MOUND IN OHIO.



CANADA



from Indian Grave.



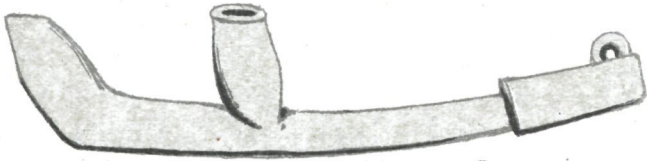
## N. AMERICA:



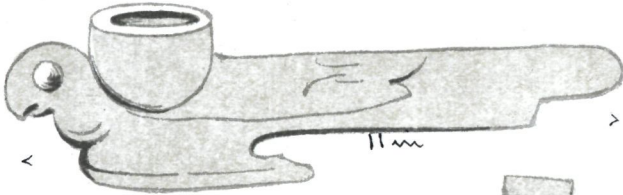
Stone pipes still predominate. The upper one from South Carolina has a new form with a cut-water or fore-foot, suggestive that it should be held by that part when being smoked.

The "NOOTKA SOUND" example is another variety, & to our modern eye wd. appear to have been designed by a carpenter. Still the bowl itself carries a decidedly modern impress. The modern N. American pipes are most carved in slate, and some are quite professional in design and lengths -

N. AMERICA.



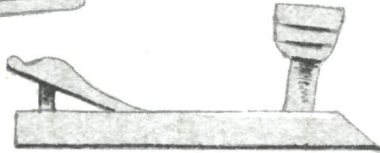
SOUTH CAROLINA.



<

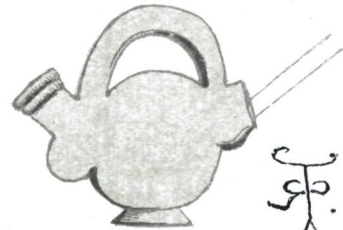
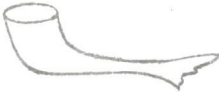
11m

>



NOOTKA SOUND.

MEXICO.



PERU.



BRITISH MUSEUM.

# ARCTIC PIPES

 of LAPLAND.

In this part of the world there is not much material for the making of Pipes - for the only wood is generally brought up by the kindly Gule Stream from the West Indies. even to NOVA ZEMBLA. still the sparse Inhabitants fall back on the hoots of the Walrus "very comely looking pipes are the result. The Laplanders pipe is generally made of their iron. which may be accounted for by the proximity of the once very famous "SWEDISH" Iron.

# ARCTIC PIPES.



CAPE ISATHURST.

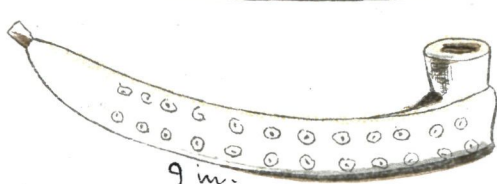
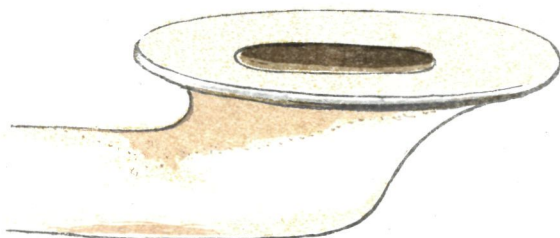
11 in

↳ LAPLAND.



SIBERIA

WALRUS TOOTH.



9 in.



LAP. PIPE. IRON.

SWEDISH IRON.

CAPE BATHURST " is from Lord Londale's Collection

# IGNITION.



BORNEO.

After the Tobacco; the Pipes, very naturally occurs the Question as to getting a Light. The friction of 3 or 4 dry pieces of Wood, is the most primitive method. still in vogue where modern methods are still unknown. and the light "HIBISCUS" wood is the easiest of all. to obtain fire from but in BORNEO. The Dyaks of the KYAN tribe are most scientific. they produced it by compressed air. & do still. & we only know of two other places. SUMATRA & the North of BURMAH. where this method is known & in use.

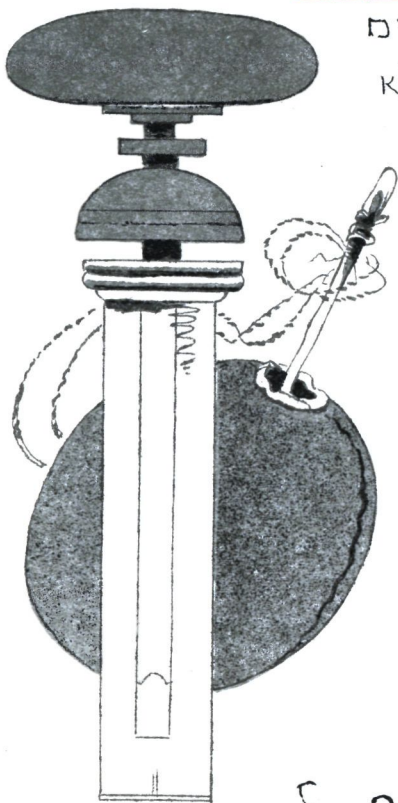
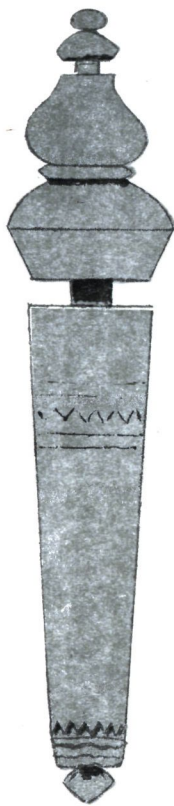


# FIRE TUBES.

## BORNEO.

DYAK  
-  
KYAN  
TRIBE

## SUMATRA.



## S. AMERICA.

"MACHEROS"

FLINT & STEEL.

doubtless. The Spaniards carried with <sup>them</sup> all through their conquests of S. AMERICA their "MACHEROS", which is a tube to carry the matches. To the tube is generally attached a chain leading to a hook which the top pulls out with the matches for the purpose of lighting with the flint & steel. Some 50 years ago the Peruvian & Chilean ladies worked very beautiful matches with lace let in. Some MACHEROS were of Gold. some of Silver. In India they are larger and are called "RAMASWAMI".

S. AMERICAN.

POTOSI.  
MACHEROS Gold.



FIRE STICKS STANLEY

(ITURI RIVER)

LAT. 1° N. LONG 25E.



STEEL

Inside THUMB



50

outside

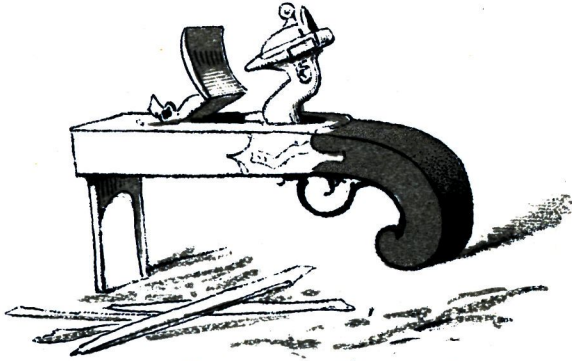
1 + 2 Finger

THE ANTEPENULTIMATE  
of IGNITION.



The Flint + Tinder Pistol combination was a very great advance when first introduced, striking a light in the dark. with a Flint & steel. is not easy if all who have tried will say so. then the old Brimstone flat matches. were odorous. next we had Franks' Amadou. & matches like a walking stick. topped with Brimstone explosive matter. then smaller ones followed by "TANDSTIKERS". now hand in hand. "VESUVIANS" of the delightful Wax "VESTAS".

"FIAT LUX" O.V.



Flint + Tinder Box.  
Brimstone matches.

"AMADOU"



HISTORICAL  
"SMOKYANA"  
"PAX"  
"VOBIS CUM"  
Ethnographical

Up to  
Date  
1890  
by: A.O

