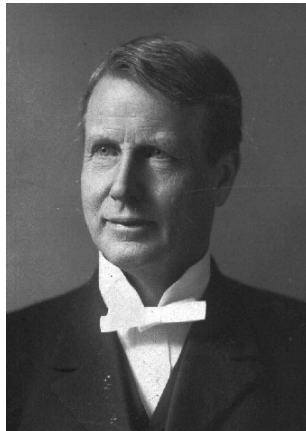


**The Burke Library Archives (Columbia University Libraries)
Union Theological Seminary, New York**

Missionary Research Library Archives: Section 6

Finding Aid for

James Whitford Bashford Diaries, 1849 – 1919



Finding Aid prepared by: Daniel Asen, July 2007

Summary Information

Creator: James Whitford Bashford, 1849 – 1919
Title: James Whitford Bashford Diaries
Inclusive dates: 1905 – 1918
Bulk dates: 1906 - 1912
Abstract: Resident bishop in Shanghai and Peking; president of Ohio Wesleyan University.
Diaries; notes on religion, lands, people, and history of China; index to diaries; photographs
Size: 8 boxes, 3.75 linear feet
Storage: Onsite storage
Repository: The Burke Library
Union Theological Seminary
3041 Broadway
New York, NY 10027
Phone: 212-851-5612
Fax: 212-851-5613
Email: archives@uts.columbia.edu

Administrative Information

- Provenance:** The James Whitford Bashford diaries were deposited in the Missionary Research Library ca 1920. The MRL was an independent institution, initially under the direction of Charles H. Fahs, research assistant to John R. Mott and curator of the MR from its foundation in 1914 until 1948. These archival records were moved with the MRL to the Brown Memorial Tower of Union Theological Seminary in 1929. In 1976 the records were accessioned to the Burke Library archives with the closure of the MRL.
- Access:** Archival papers are available to registered readers for consultation by appointment only. Please contact archives staff by phone, fax or email archives@uts.columbia.edu, as far in advance as possible.
- Access Restrictions:** The collection is unrestricted to readers. Certain materials however are in a fragile condition, and this may necessitate restriction in handling and copying.
- Preferred Citation:** Item description, MRL 6: J. W. Bashford Papers, box number, folder number, The Burke Library Archives (Columbia University Libraries) at Union Theological Seminary, New York.

Biography

Known for his work as a resident missionary bishop in China, Bashford was born on May 29, 1849 at Fayette, Wisconsin. He received his A.B. degree from the University of Wisconsin, Madison in 1873, and graduated from the Boston University School of Theology in 1876. He was awarded the Ph.D. from Boston University in 1881. In 1878 he married Jane M. Field. After several pastorates in the Methodist Episcopal Church - serving in Boston, Mass., Portland, Maine and Buffalo, N.Y.- Bashford was elected president of Ohio Wesleyan University in 1889.

In 1904 he was elected bishop of the Methodist Episcopal Church and in the same year went to China as resident bishop, first in Shanghai. From the summer of 1908 onwards, Bashford served in Peking. Bishop Bashford began his missionary career in China when the country had just experienced the Boxer Uprising. In 1911 the monarchy was overthrown and the Republic of China established. Bashford advocated recognition of the Republic by the U.S. Government. It was Bashford's belief that hope for China lay in Christianizing its civilization.

A man of wide influence, he approached the problems of church administration as churchman, educator and statesman. As Methodist churchman his attitude towards members of other denominations was ecumenical, but he advocated worldwide denominations rather than national churches. He died in Pasadena, California on March 18, 1919.

His published works include *God's Missionary Plan for the World* (1908), *China and Methodism* (1908), and numerous pamphlets on the "Awakening of China", as well as on other subjects. His major literary work is *China, an Interpretation*. (1916).

Collection Scope and Content Note

The collection contains 54 volumes of the diaries, which Bashford wrote during his life in China, containing notes on his work, travels, interviews with public figures and reflections upon his reading. His diaries also contain notes on history and events of his day. He also compiled extensive notes on the religions, land, people, and history of China. These appear in a separate notebook. The entire collection exists as one series.

The bulk of the collection consists of Bashford's diaries. Diaries 1-10, which cover May 1904 to October 1905, have been designated as missing following a water incursion incident into the archives' stacks. Diaries 18 and 19, April 8 – September 5, 1907 do not form part of this collection. Because the index for his diaries does mention Diaries 18 and 19, it is most likely that they did actually exist. See collection addenda for an alternate explanation of their present absence.

The collection contains an index for Bashford's diaries. Some entries are in the form Diary number : page number. Most entries simply have four digits. For these entries the first two digits refer to the diary number. The remaining digits refer to the page number within that diary.

The collection also contains a portrait photo of Bashford and a photo of buildings at Peking University.

Processing

All materials were placed in acid-free folders, envelopes and boxes. Paper clips were removed from diaries. A printed portrait and six photographs of Peking, Peking University and family groups, which originally belonged to the MRL 6: I.T. Headland Papers were found in the Bashford boxes when processing began and were returned to the Headland photographic collection.

Contents list**Box Folder Contents**

Box 1 containing Diaries 1 – 10, May 1904 – Oct 1905 reported missing Feb 2004

2	1	Diary 11, Oct 7 - Nov 13, 1905
2	2	Diary 12, Nov 15, 1905 - Jan 29, 1906
2	3	Diary 13, Feb 1 - Mar 13, 1906
2	4	Diary 14, Mar 21 - May 5, 1906
2	5	Diary 15, May 5 - Aug 19, 1906
2	6	Diary 16, Aug 21 - Nov 22, 1906
2	7	Diary 17, Nov 24, 1906 - Jan 27, 1907
3	1	Diary 20, Apr 8 – June 4, 1907
3	2	Diary 21, Jun 10 – Sep 5, 1907
3	3	Diary 22, Sep 7 - Oct 9, 1907
3	4	Diary 23, Oct 13 - Nov 18, 1907
3	5	Diary 24, Nov 21, 1907 - Feb 1, 1908
3	6	Diary 25, Feb 3 - Mar 26, 1908
3	7	Diary 26, Mar 30 - Jul 19, 1908
4	1	Diary 27, Jul 27 - Nov 1, 1908
4	2	Diary 28, Nov 1, 1908 - Jan 20, 1909
4	3	Diary 29, Jan 6 - May 8, 1909
4	4	Diary 30, May 10 - Sep 1, 1909
4	5	Diary 31, Sep 1 - Nov 19, 1909
4	6	Diary 32, Nov 19, 1909 - Mar 17, 1910
5	1	Diary 33, Mar 18 - Nov 9, 1910
5	2	Diary 34, Nov 9, 1910 - Feb 1, 1911
5	3	Diary 35, Feb 1 - Apr 20, 1911
5	4	Diary 36, Apr 20 - Sep 30, 1911
5	5	Diary 37, Oct 1 - Nov 29, 1911
5	6	Diary 38, Nov 29, 1911 - Apr 7, 1912
6	1	Diary 39, Apr 9- Sep 10, 1912
6	2	Diary 40, Sep 10 - Dec 20, 1912
6	3	Diary 41, Dec 20, 1912 - Apr 20, 1913
6	4	Diary 42, Apr 20 - Aug 17, 1913
6	5	Diary 43, Aug 19, 1913 - Feb 3, 1914
6	6	Diary 44, Mar 1 - Aug 30, 1914
7	1	Diary 45, Sep 2, 1914 - Jan 23, 1915
7	2	Diary 46, Jan 31 - May 30, 1915
7	3	Diary 47, Jun 1 - Oct 12, 1915
7	4	Diary 48, Oct 12, 1915 - Jun 9, 1916
7	5	Diary 49, Jun 15 - Nov 13, 1916

7	6	Diary 50, Nov 21, 1916 - Aug 14, 1917
8	1	Diary 51, Aug 14, 1917 - Jan 6, 1918
8	2	Diary 52, Jan 1 - Apr 20, 1918
8	3	Diary 53, Apr 29, 1918 - Jan 11, 1919
8	4	Diary 54, May 1 - Aug 25, 1918
8	5	Notebook containing notes on religions, land, people and history of China.
8	6	Index for diaries
9	1	Portrait photo of James Whitford Bashford [1887?]
9	2	Photograph of Peking University buildings after post-Boxer reconstruction