

# Solid Waste Interstate Transportation Act 2005

Presented By  
**Johnny O’Kane**

**Team Solid Waste Fall 2005:**

**Nupur Hiremath (Project Manager), Brian Ross (Deputy)  
Christine Chase, Robin DeJong, Kristin Heinen, Sallie  
Lacy, Sarah Lopas, Johnny O’Kane, Nichole Lynch-Cruz  
Bonnie Stamper, Leo Tidd, Makiko Yamazoe.**



# Today's Agenda

**Problem**

**Policy History**

**Potential Impacts**

**Program Goals**

**Program Implementation**

**Year One Outlook**



# Impacts of MSW Disposal and Transportation

- Emissions

  - NO<sub>x</sub>
  - Greenhouse Gases



- Other Pollutants

  - Leachate
  - Contaminated Ash



- Environmental Impacts

  - Global Warming
  - Groundwater Contamination



- Health Impacts

  - Respiratory Illness
  - Birth Defects
  - Cancer

# H.R. 274: Interstate Solid Waste Transportation Act

- **Over 40 acts proposed to regulate interstate transport since 1980**
- **Seven Supreme Court cases reinforce commerce clause**
- **Proposed by Congresswoman Jo Ann Davis**
- **Introduced in 2005**
- **Amends Solid Waste Disposal Act of 1965**
- **Key provisions**
  - **Presumptive ban**
  - **Host Community Agreements**
  - **20% rule**
- **Implementation decided by states**



# Policy History

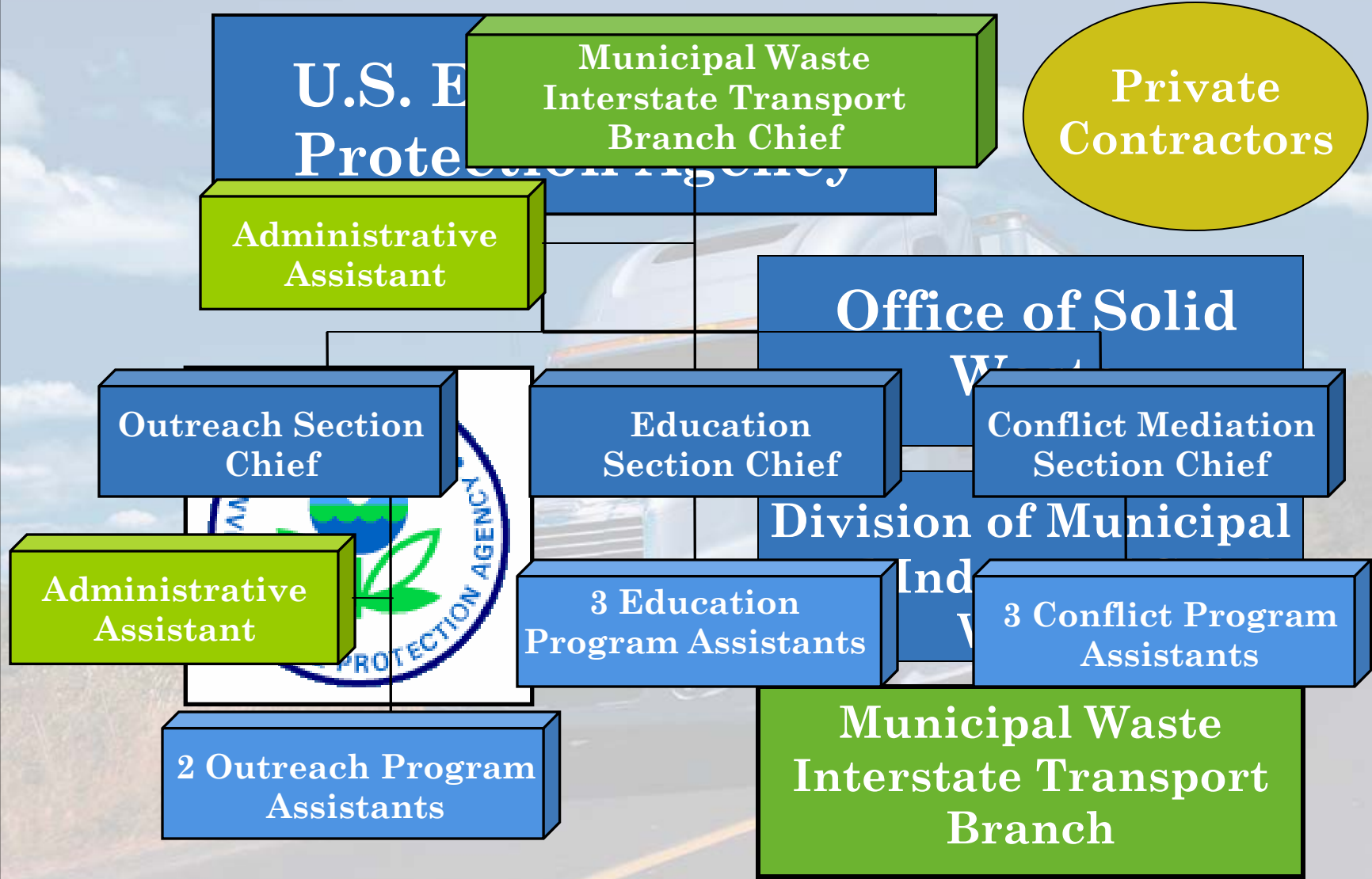


- **Opponents: Exporting states & private solid waste companies**
  - Unable to manage waste locally
  - Economic impact: \$43 billion industry

# Program Goals

- **Short-term:**
  - Educate states on their rights
  - Minimize legal conflict
- **Long-term:**
  - Interstate transport of municipal solid waste declines
  - Exporting states deal with waste locally

# Program Structure



# Program Design

## Municipal Waste Interstate Transport Branch

### Outreach Section

- Program oversight
- Establish federal regulations

### Education Section

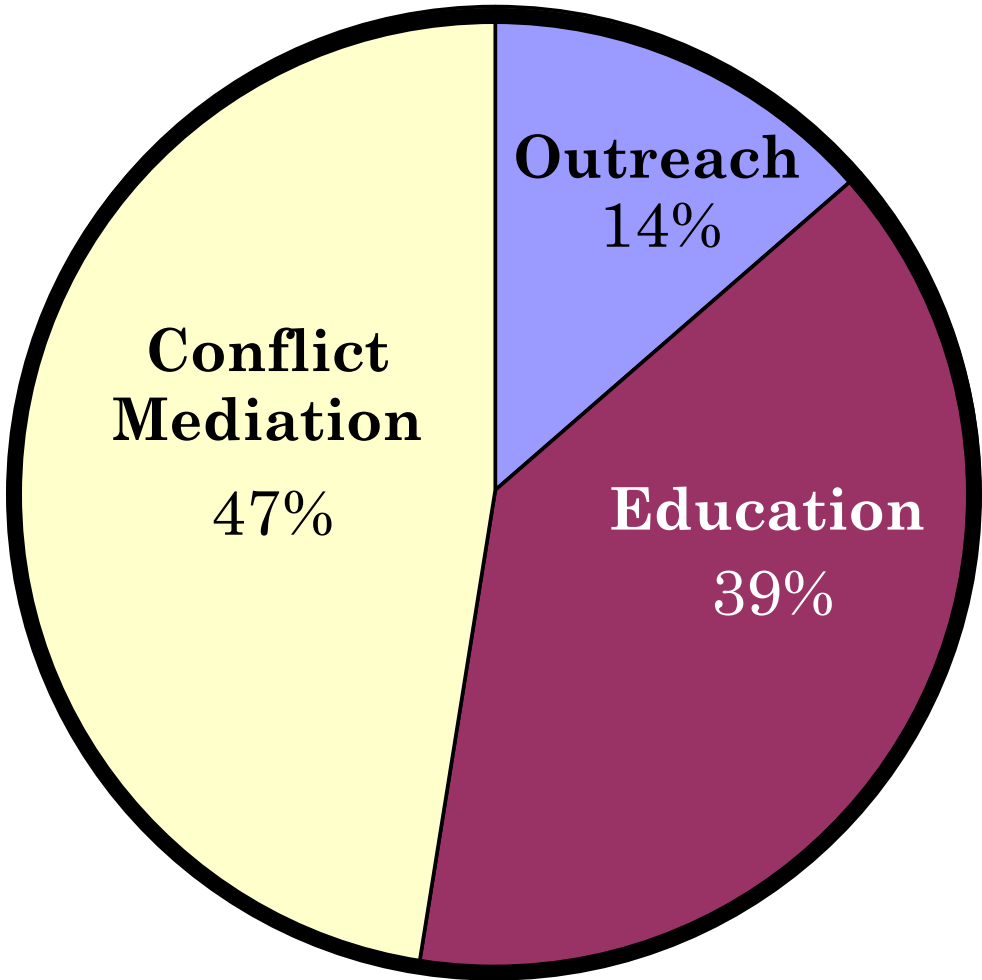
- Visit and train regional offices
- Provide inquiry assistance
- Educate states on their rights
- Establish and maintain a handbook and online database

### Conflict Mediation Section

- Work with regions to resolve conflicts
- Provide advisory role

# Program Budget

## Budget Allocation



# Year One Outlook

## Phase I

- Hire all permanent staff members
- Prepare task orders to hire contractors
- Acquire and furnish office space

## Measuring Success

- Fulfilling staff requirements
- Obtaining contractor services
- Establishing permanent presence within EPA

## Year One Outlook (cont.)

### Phase II

- **Develop educational handbook and online database**
- **Identify and minimize conflict**
- **Evaluate and measure performance**

### Measuring Success

- **Amount of MSW transported across state lines**
- **Number of court cases**
- **Create and sustain feedback loop for future adjustments**

# Year One Outlook

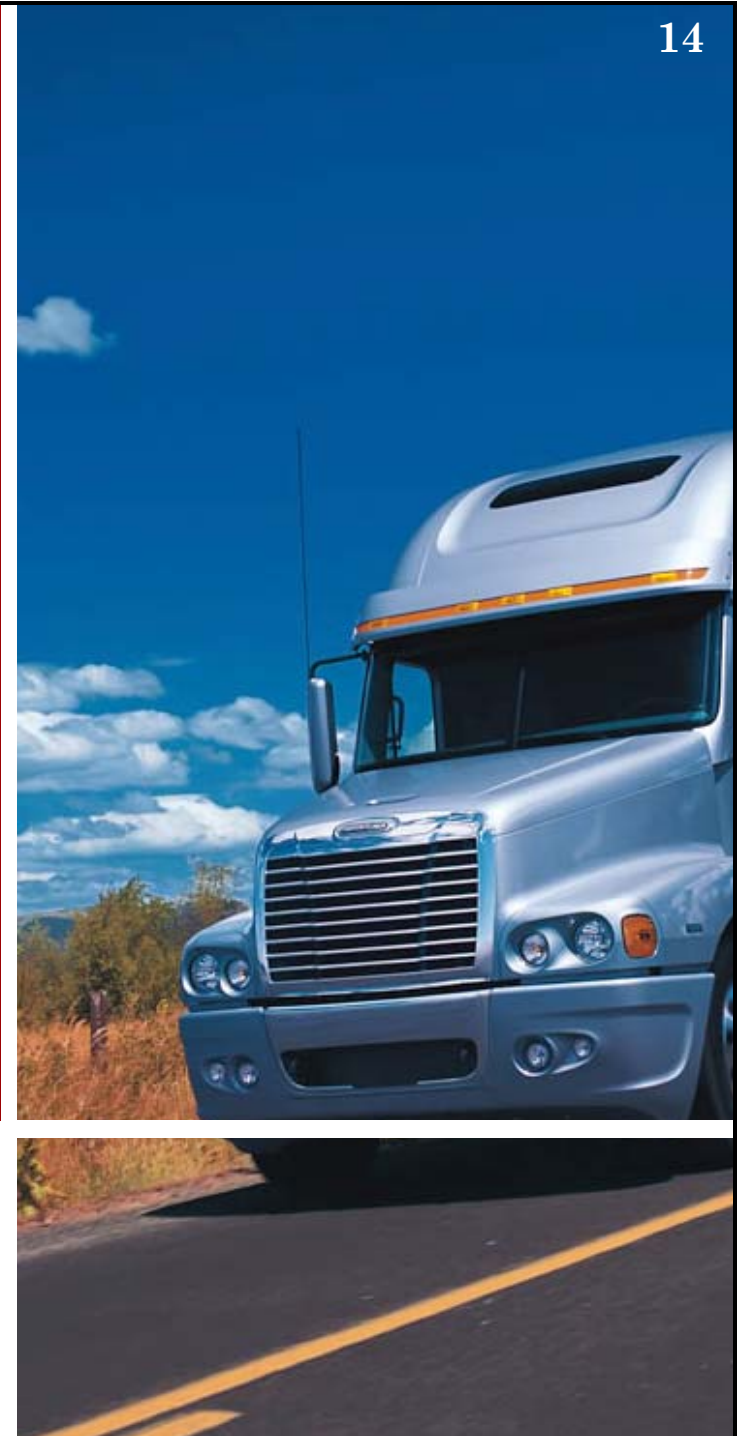
## Next Steps

- **Initiate MSW Transport Branch program**
  - **Collect data on performance indicators**
  - **Revise program**
  - **Ensure that program results in a decrease of interstate MSW transportation**
- 

# Thank You

## Team Solid Waste:

**Nupur Hiremath (Project Manager), Brian Ross (Deputy) Christine Chase, Robin DeJong, Kristin Heinen, Sallie Lacy, Sarah Lopas, Johnny O’Kane, Nichole Lynch-Cruz, Bonnie Stamper, Leo Tidd, Makiko Yamazoe.**



## Picture Sources

Repa, James. *Interstate Movement of Municipal Solid Waste*. NSWMA Research Bulletin 02-01

Washington, DC: National Solid Wastes Management Association, 2002.

<http://www.nswma.org/InterstateWaste2005.pdf>

<http://minneapolisfed.org/pubs/fedgaz/05-03/garbage.jpg>

<http://www.dancewithshadows.com/harman/just3-july.asp>

<http://semitrucksquebec.tripod.com/sitebuildercontent/sitebuilderpictures/containerconvoy.jpg>

[http://www.freightliner.com/download/images/FreightlinerTrucks/9\\_03\\_century\\_road\\_m.jpg](http://www.freightliner.com/download/images/FreightlinerTrucks/9_03_century_road_m.jpg)

<http://www.msnbc.msn.com/id/8550386> By: Henry Ray Abrams

<http://bridges.nlamerica.com/lwhs/us-2000/Mvc-003s.jpg>

<http://www.devwebpro.com/suebolander/regionmap.gif>

[http://www.forester.net/mw\\_0211\\_evaluation.html](http://www.forester.net/mw_0211_evaluation.html)

[http://www.improvementscatalog.com/product.asp?product=234529zz&dept\\_id=13222&cm](http://www.improvementscatalog.com/product.asp?product=234529zz&dept_id=13222&cm)

<http://www.truckersusa.com/a1trans/art/truck1.jpg>

<http://www.rbeerslaw.com/solwaste.html>

