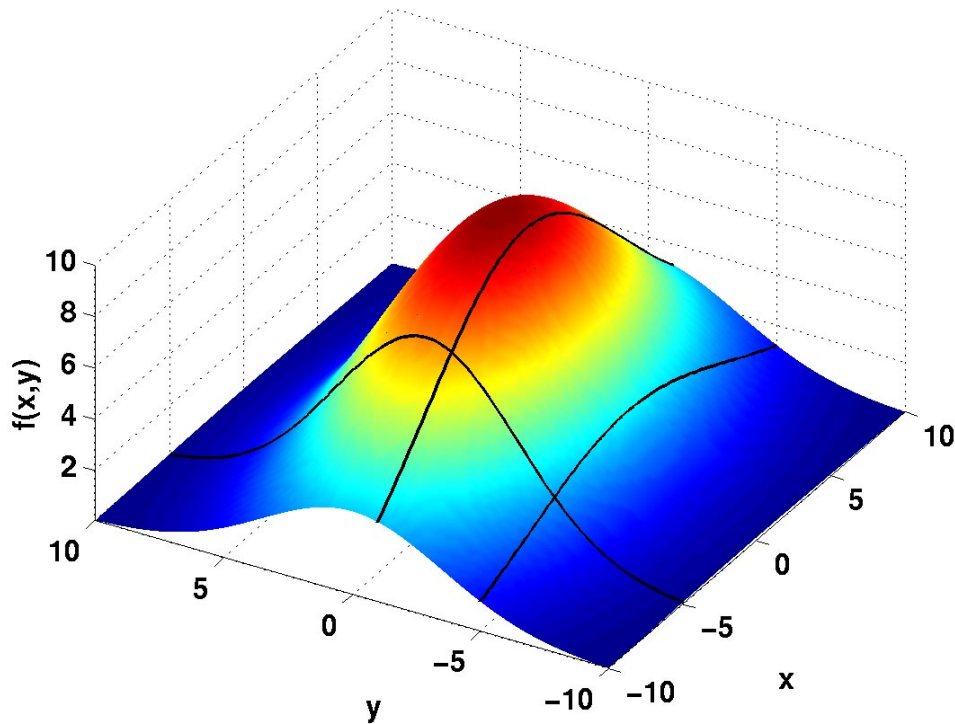


Partial Differentiation



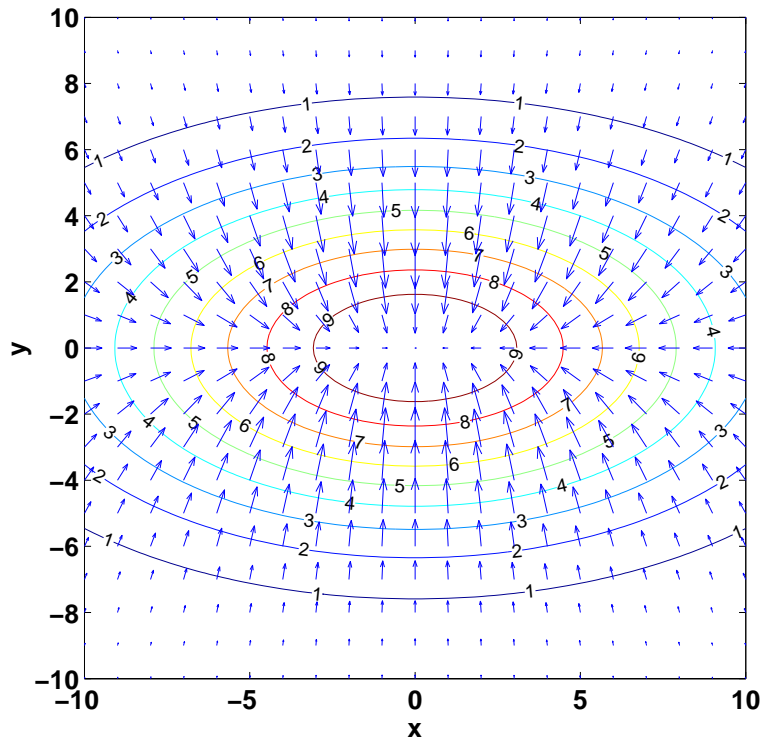
$$f(x, y) = \exp \left[- \left(\frac{x^2}{90} + \frac{y^2}{25} \right) \right]$$

$$\frac{\partial f}{\partial x} = -\frac{2x}{90} \exp \left[- \left(\frac{x^2}{90} + \frac{y^2}{25} \right) \right]$$

$$\frac{\partial f}{\partial y} = -\frac{2y}{25} \exp \left[- \left(\frac{x^2}{90} + \frac{y^2}{25} \right) \right]$$

Partial Differential Operators

$$\nabla f(x, y)$$



$$\nabla^2 f(x, y)$$

