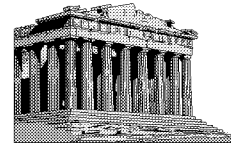


Government



Westchester County Government Organization

Westchester County Government provides extensive services and operates a number of diverse facilities including:

- Westchester County Airport
- Westchester Community College
- The Norwood Jackson Correctional Facility
- A 16,000-acre county parks system which includes five public golf courses, swimming pools, beaches, hiking/biking trails, and nature preserves
- Playland family amusement park
- The “Bee-line” bus and commuter shuttle system
- Westchester County Center

Westchester County government also maintains approximately 200 bridges and 179 miles of county roads and is responsible for the disposal of most of the county's solid waste and for the treatment of the majority of Westchester's sewage. In addition, the Westchester County Health Department enhances the protection of the public's health, the Department of Social Services aids in the care of needy residents, and the Department of Public Safety patrols the parkways and offers specialized police services to local governments.

Departments and Offices of Westchester County Government

COUNTY EXECUTIVE'S OFFICE

Andrew Spano, County Executive 285-2900
 Jay B. Hashmall, Deputy County Executive 285-2912

Divisions in the County Executive's Office:

Affirmative Action 285 - 2141
 Citizen Services 285 - 2173
 Communications 285 - 2930
 Office for the Disabled 285 - 2958
 Office of Disaster & Emergency Services 285 - 3026
 Employment and Training 285 - 3707
 Government Relations 285 - 2924
 Office for the Aging 665 - 5945
 Office for Women 285 - 5976
 Personnel Office 285 - 2100
 Veterans' Affairs 285 - 2145

Department/Office	Commissioner/Director	Phone
Budget	Kathleen Tooher	285-2850
Correction	Rocco Pozzi(Acting)	347-6020
Consumer Protection	Castrenze Di Carlo	285-2162
Community Mental Health	Steven Friedman	285-5235
Environmental Facilities	Anthony Trelewicz	637-3064
Finance	Peter Pucillo	285-2756
Fire Services	Walter Groden	593-5910
General Services	Lawrence Schwartz	285-2909
Health	Harold Adel, M.D.	637-4720
Laboratories And Research	Millard Hyland, M.D.	593-5555
Law	Alan Scheinkman	285-2690
Parks, Recreation and Conservation	Salvatore DeSantis	242-6301
Personnel Office	Paula Redd Zeman	285-2101
Planning	Joyce Lannert	285-4402
Probation	Rocco Pozzi	285-3502
Public Safety	Louis D'Aliso	741-4410
Public Works	Anthony Landi	285-2546
Social Services	Steven Friedman(Acting)	285-5235
Tax Commission	Margaret Iaocomini	285-4325
Transportation	Eric Langeloh	285-5147
Westchester Community College	Joseph Hankin	785-6708

OFFICE OF THE COUNTY CLERK Leonard Spano 285-3080

Divisions in the County Clerk's Office

Land & Legal Records
Records/Archives Center

DISTRICT ATTORNEY'S OFFICE Jeanine Pirro 285-4200

Divisions in the District Attorney's Office

Administration & Operations	Local Criminal Courts & Grand Jury
Appeals & Special Litigation	Special Prosecutions
Investigations	Superior Court & Trial

JUDICIARY SYSTEM Angelo J. Ingrassia

Supreme Court - Ninth Judicial District	285-4100
County Court	285-4100
Surrogates Court	285-3722
Family Court	285-3600

CITIZEN ADVISORY BOARDS, COUNCILS, AND COMMISSIONS

African American Advisory Board	Police Board
Airport Advisory Board	Prequalification Board
Board of Ethics	Public Employment Relations Board
Board of Health	Public Utility Service Agency
Consumer Advisory Council	Refuse Disposal District #1 Board
Community Services Board	Rent Guidelines Board
Criminal Justice Advisory Board	Soil & Water Conservation Board
Environmental Management Council	Stream Control Board of Appeals
Fire Advisory Board	Tax Commission
Hispanic Advisory Board	Traffic Safety Board
Housing Opportunity Commission	Transportation Board
Household Hazardous Waste Board	Westchester Community College Board
Industrial Development Agency	Westchester Private Industry Council
Labs & Research Board of Managers	Woman's Advisory Board
Parks Board	Youth Board
Planning Board	

BOARD OF LEGISLATORS

The Legislative branch of the county government is made up of a 17-member Board of Legislators, each representing a district of approximately 50,000 people. Legislators are elected every two years.

The Board of Legislators, the governing body of the county, is the legislative and policy-making branch of Westchester County government. It passes laws, acts and resolutions, determines the county's annual budget, approves appointments of the County Executive, and establishes the general policies of the government.

Westchester County Board of Legislators 1998 - 1999

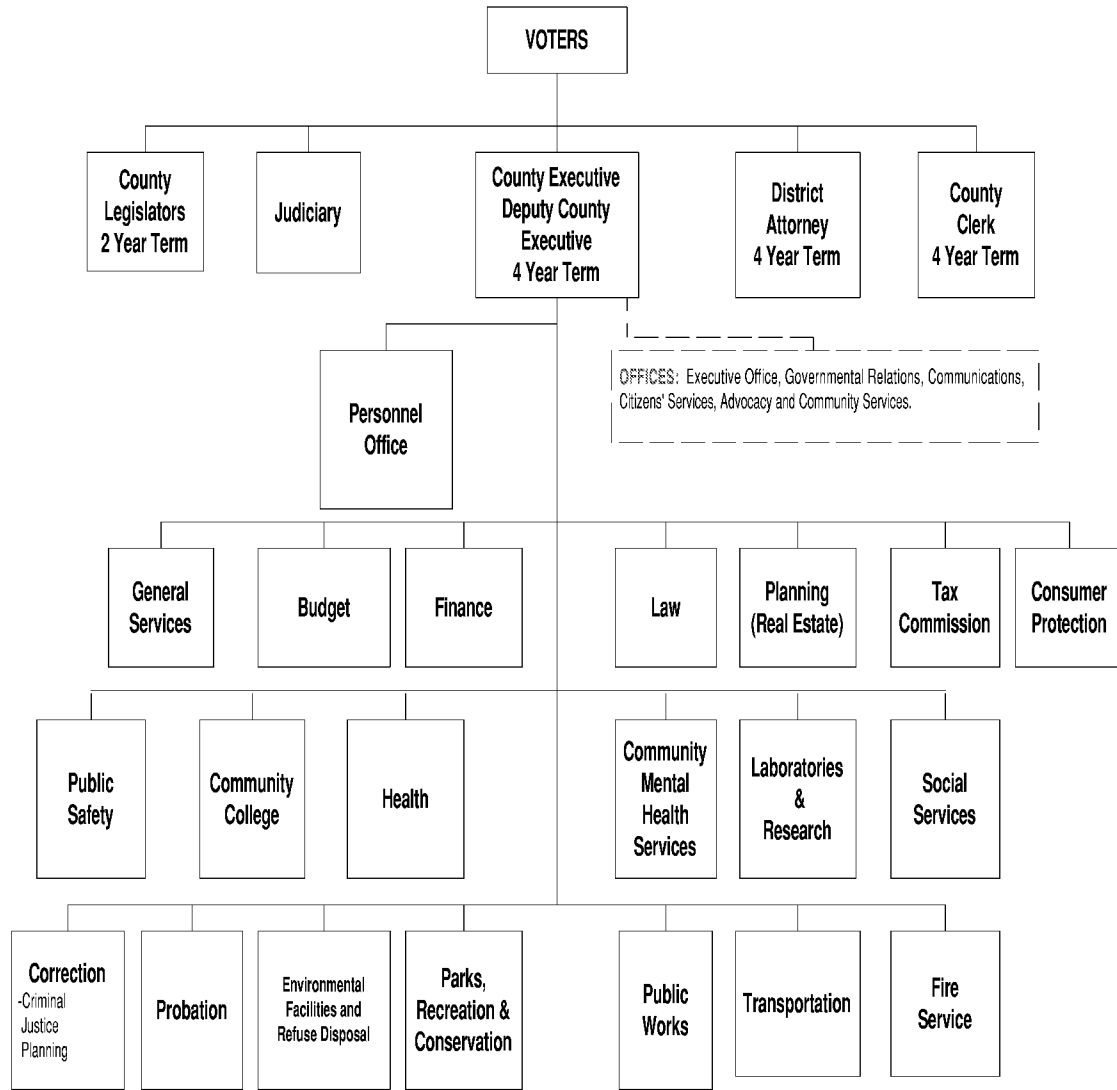
<u>District</u>	<u>Legislator</u>	<u>Phone</u>
1	George Oros	285-2828
2	Ursula G. LaMotte.....	285-2810
3	Suzanne R. Swanson	285-2847
4	Michael Kaplowitz	285-2848
5	William Ryan	285-2827
6	Paul J. Noto	285-2834
7	George Latimer (Chairman)	285-2802
8	Lois Bronz.....	285-2833
9	Richard G. Wishnie	285-2812
10	Vito Pinto	285-2817
11	James Maisano	285-2826
12	Thomas Abinanti	285-2821
13	Clinton I. Young, Jr.....	285-2837
14	Bernice Spreckman.....	285-2815
15	Louis A. Mosiello.....	285-2830
16	Andrea Stewart-Cousins	285-2829
17	Katherine S. Carsky.....	285-2846

The Board of Legislators operates with the following committees:

- Budget and Appropriations
- Minority Affairs
- Community Affairs
- County Officers and Departments
- Rules
- Task Force on Senior Citizens
- Legislation
- Public Safety and Criminal Justice
- Public Works
- Environment
- Health and the Medical Center
- Task Force on Families

Sources: 1996 Westchester County Operating Budget; 1996 Planning Board Report; 1995 Directory of Westchester County Officials (League of Women Voters)

WESTCHESTER COUNTY ORGANIZATION CHART



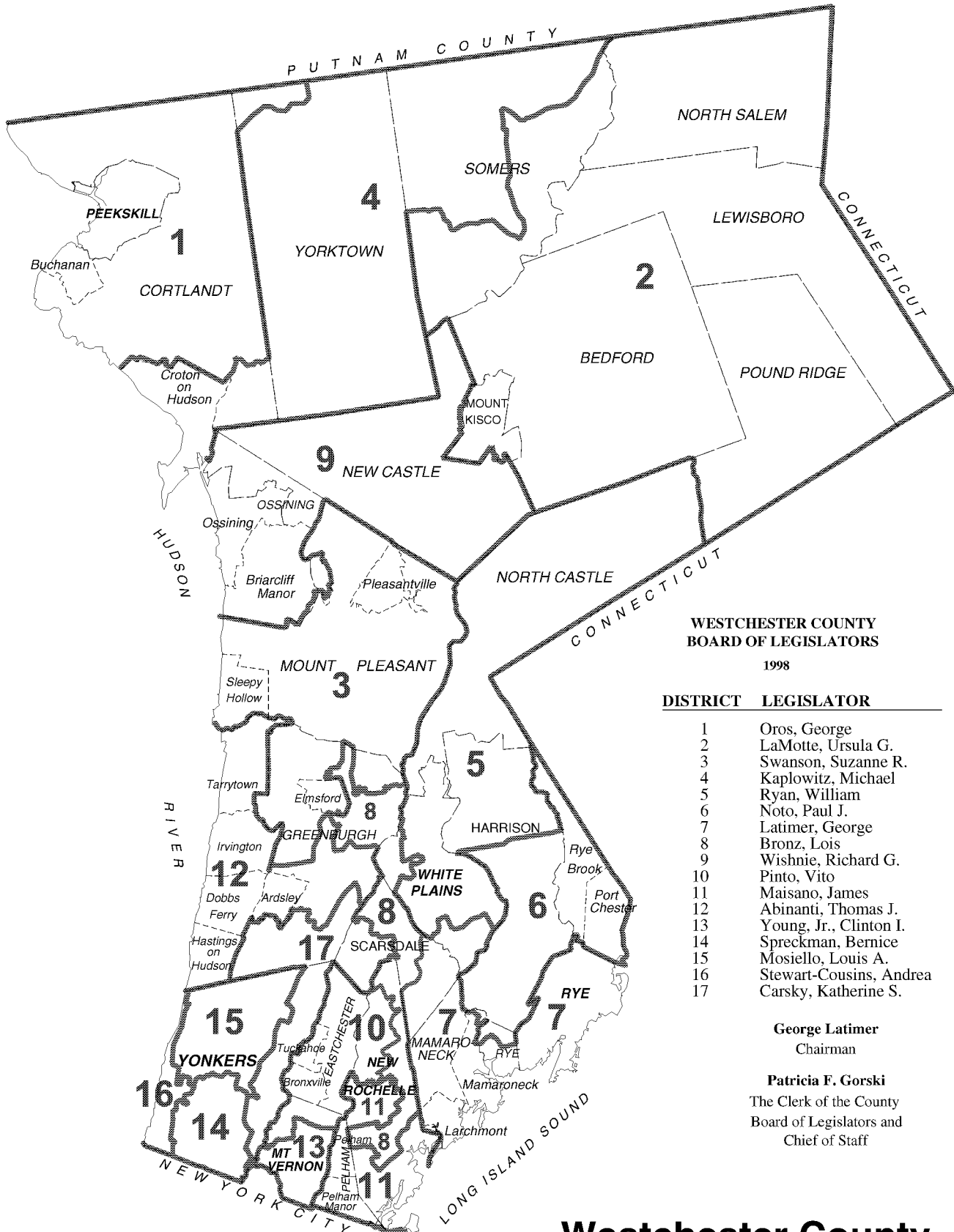
*Source: Westchester County Department of Budget.
Prepared by the Westchester County Department of Planning.*

Mayors & Supervisors

	Municipalities	Mayor or Supervisor	Mailing Address (Municipal Building)	Phone Number
C	Mount Vernon	Ernest D. Davis	Mount Vernon, NY 10550	665-2300
I	New Rochelle	Timothy C. Idoni	New Rochelle, NY 10801	654-2000
T	Peekskill	Frances S. Gibbs	Peekskill, NY 10566	737-3400
I	Rye	Steven Otis	Rye, NY 10580	967-5400
E	White Plains	Joseph M. Delfino	White Plains, NY 10601	422-1200
S	Yonkers	John D. Spencer	Yonkers, NY 10701	377-6000
	Ardsey	Sam Abate	Ardsey, NY 10502	693-1550
	Briarcliff Manor	Keith Austin	Briarcliff Manor, NY 10510	941-4800
	Bronxville	Nancy D. Hand	Bronxville, NY 10708	337-6500
	Buchanan	Alfred Donahue	Buchanan, NY 10511	737-1033
	Croton-on-Hudson	Robert W. Elliot	Croton-on-Hudson, NY 10520	271-4781
	Dobbs Ferry	Charles Lester (Deputy)	Dobbs Ferry, NY 10522	693-2203
	Elmsford	Arthur J. DeAngelis	Elmsford, NY 10523	592-6555
V	Harrison	Ronald Bianchi	Harrison, NY 10528	835-2000
I	Hastings	William Kinnally, Jr.	Hastings-on-Hudson, NY 10706	478-3400
L	Irvington	Dennis Flood	Irvington, NY 10533	591-7070
L	Larchmont	Cheryl Lewy	Larchmont, NY 10538	834-6230
A	Mamaroneck	Joseph Lanza	Mamaroneck, NY 10543	777-7700
G	Mount Kisco	Mark Farrell	Mount Kisco, NY 10549	241-0500
E	Ossining	Thomas Cambariere	Ossining, NY 10562	941-3554
	Pelham	Joseph E. Dumin, Jr.	Pelham, NY 10803	738-2015
	Pelham Manor	Ferdinand Spucci	Pelham Manor, NY 10803	738-8820
	Pleasantville	John M. Nonna	Pleasantville, NY 10570	769-1900
	Port Chester	Christine Korff	Port Chester, NY 10573	939-5200
	Rye Brook	Salvatore Cresenzi	Rye Brook, NY 10573	939-1121
	Scarsdale	Edward Morgan	Scarsdale, NY 10583	722-1100
	Sleepy Hollow	Sean Treacy	North Tarrytown, NY 10591	631-1440
	Tarrytown	Eileen Pilla	Tarrytown, NY 10591	631-7873
	Tuckahoe	Phil White	Tuckahoe, NY 10707	961-3100
	Bedford	John R. Dinin	Bedford Hills, NY 10507	666-6530
	Cortlandt	Linda D. Puglisi	Cortlandt Manor, NY 10566	734-1000
	Eastchester	James Cavanaugh	Eastchester, NY 10709	771-3300
	Greenburgh	Paul J. Feiner	Elmsford, NY 10523	993-1500
T	Lewisboro	Thomas Herzog	South Salem, NY 10590	763-3151
O	Mamaroneck	Elaine Price	Mamaroneck, NY 10543	381-7800
W	Mount Pleasant	Robert F. Meehan	Valhalla, NY 10595	742-2300
N	New Castle	Clinton B. Smith	Chappaqua, NY 10514	238-4771
S	North Castle	John A. Lombardi	Armonk, NY 10504	273-3321
	North Salem	Sy Globerman	North Salem, NY 10560	669-5577
	Ossining	John Chervokas	Ossining, NY 10562	762-6000
	Pelham	John F. Carney	Pelham, NY 10803	738-1021
	Pound Ridge	Joy G. Simpkins	Pound Ridge, NY 10576	764-5511
	Rye	Robert A. Morabito	Port Chester, NY 10573	939-3570
	Somers	William C. Harding	Somers, NY 10589	277-3323
	Yorktown	Linda G. Cooper	Yorktown Heights, NY 10598	962-5722

New York State and U.S. Elected Officials

	Official	Phone Number
<i>New York State Elected Officials</i>		
Executive	Gov. George E. Pataki	(518) 474-8390
Senators and Districts (Westchester)	Larry Seabrook (33 S.D.)	(718) 547-8854
	Guy J. Velella (34 S.D.)	(914) 969-2210
	Nicholas Spano (35 S.D.)	(914) 969-5194
	Suzi Oppenheimer (36 S.D.)	(914) 921-0221
	Vincent L. Leibell (37 S.D.)	(914) 279-3773
Assembly Members and Districts (Westchester)		
	James Pretlow (84 A.D.)	(914) 667-0127
	Ronald Tocci (85 A.D.)	(914) 235-7900
	Richard Brodsky (86 A.D.)	(914) 472-0319
	Michael J. Spano (87 A.D.)	(914) 779-8805
	Audrey G. Hochberg (88 A.D.)	(914) 723-1115
	Naomi C. Matusow (89 A.D.)	(914) 241-2649
	Sandra Galef (90 A.D.)	(914) 941-1111
<i>U.S. Elected Officials</i>		
Executive	President William J. Clinton	(202) 456-1111
U.S. Senators (New York State)	Daniel P. Moynihan	(212) 661-5150
	Alfonse M. D'Amato	(212) 947-7390
U.S. Congressional Districts (Westchester)	Eliot L. Engel (17C.D.)	(718) 796-9700
	Nita Lowey (18 C.D.)	(914) 428-1707
	Sue W. Kelly (19 C.D.)	(914) 241-6340
	Benjamin A. Gilman (20 C.D.)	(914) 478-5550



**WESTCHESTER COUNTY
BOARD OF LEGISLATORS
1998**

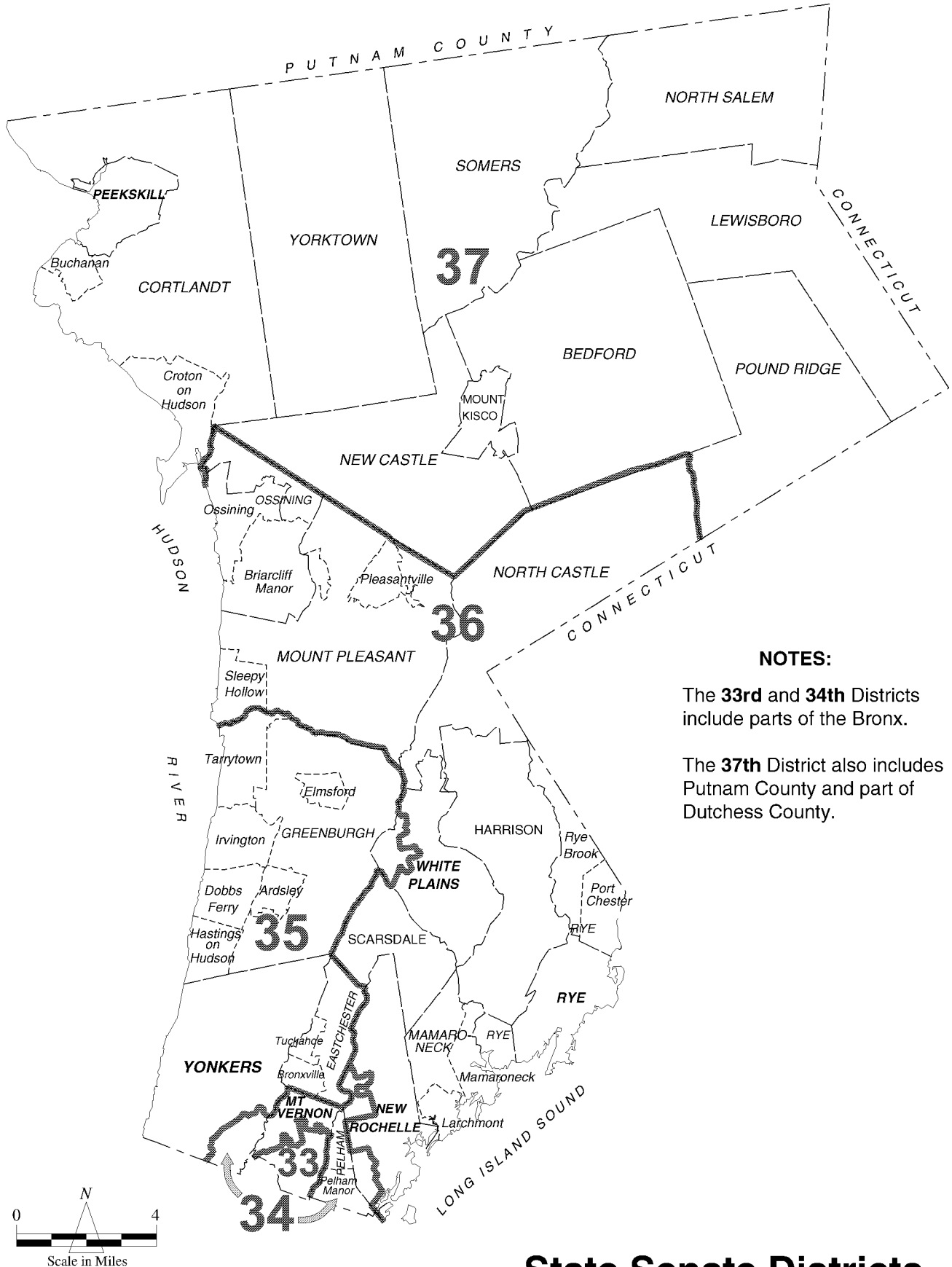
DISTRICT LEGISLATOR

1	Oros, George
2	LaMotte, Ursula G.
3	Swanson, Suzanne R.
4	Kaplowitz, Michael
5	Ryan, William
6	Noto, Paul J.
7	Latimer, George
8	Bronz, Lois
9	Wishnie, Richard G.
10	Pinto, Vito
11	Maisano, James
12	Abinanti, Thomas J.
13	Young, Jr., Clinton I.
14	Spreckman, Bernice
15	Mosiello, Louis A.
16	Stewart-Cousins, Andrea
17	Carsky, Katherine S.

George Latimer
Chairman

Patricia F. Gorski
The Clerk of the County
Board of Legislators and
Chief of Staff

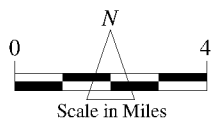
Westchester County Legislative Districts



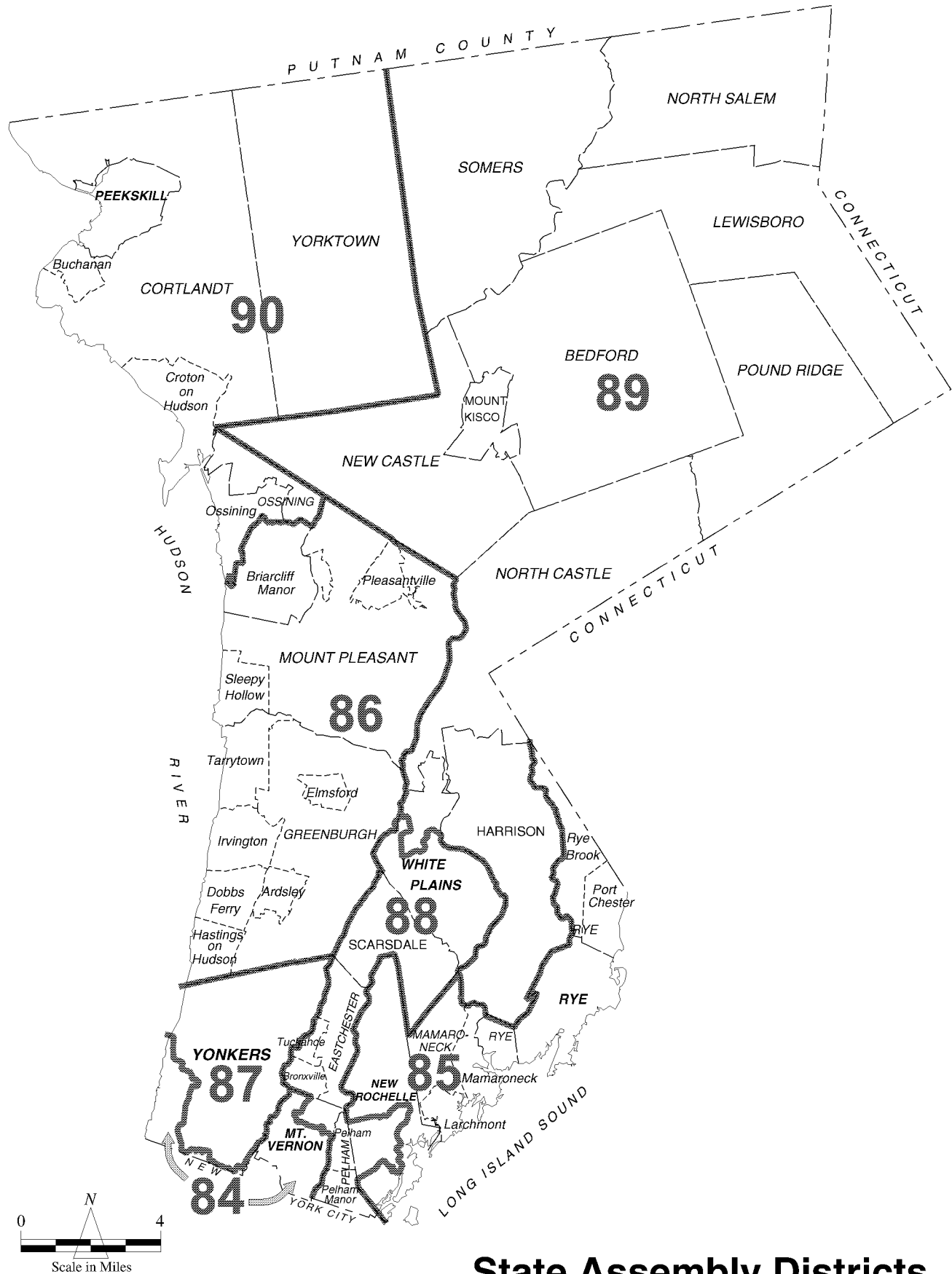
NOTES:

The **33rd** and **34th** Districts include parts of the Bronx.

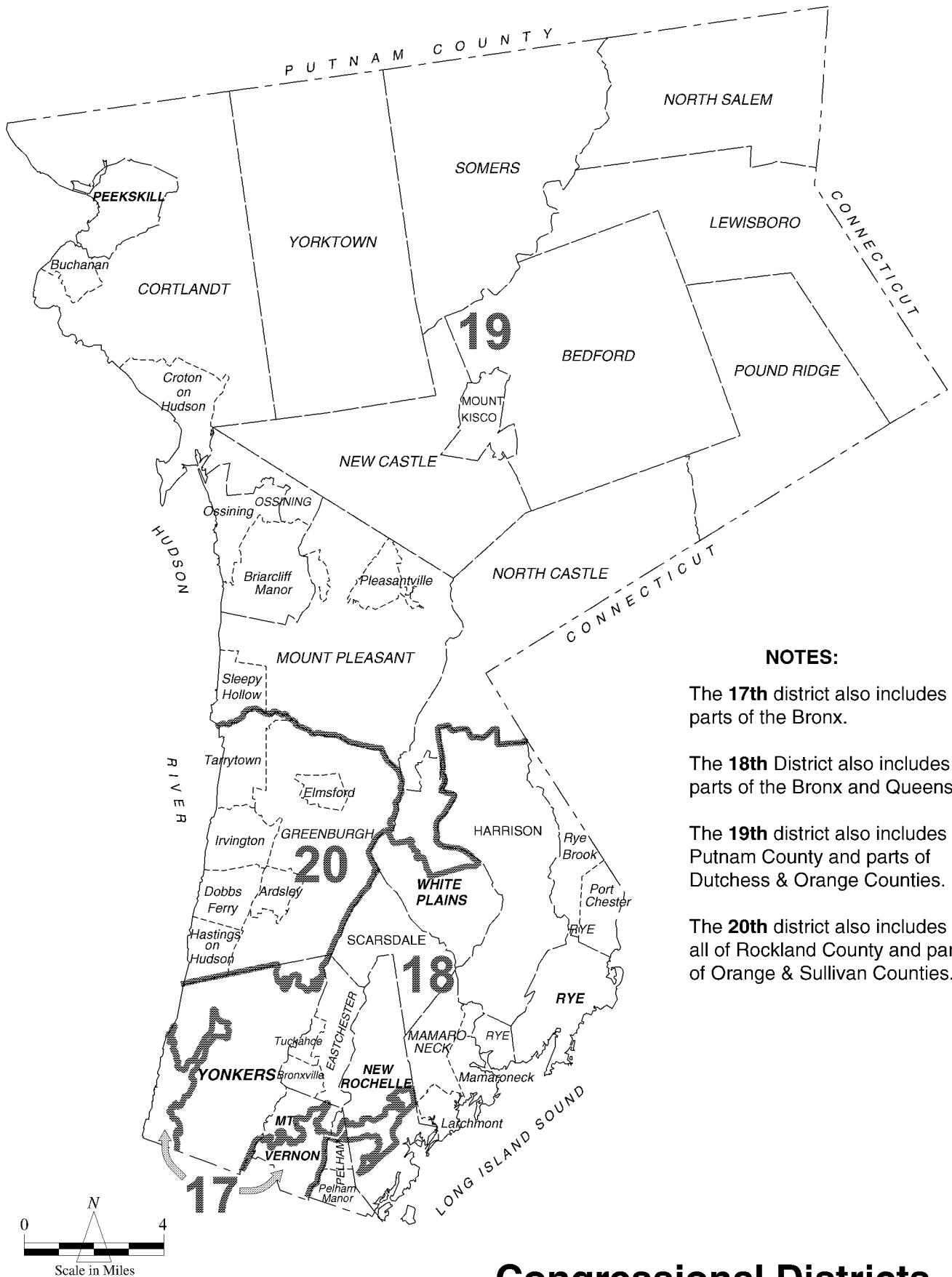
The **37th** District also includes Putnam County and part of Dutchess County.



State Senate Districts



State Assembly Districts



NOTES:

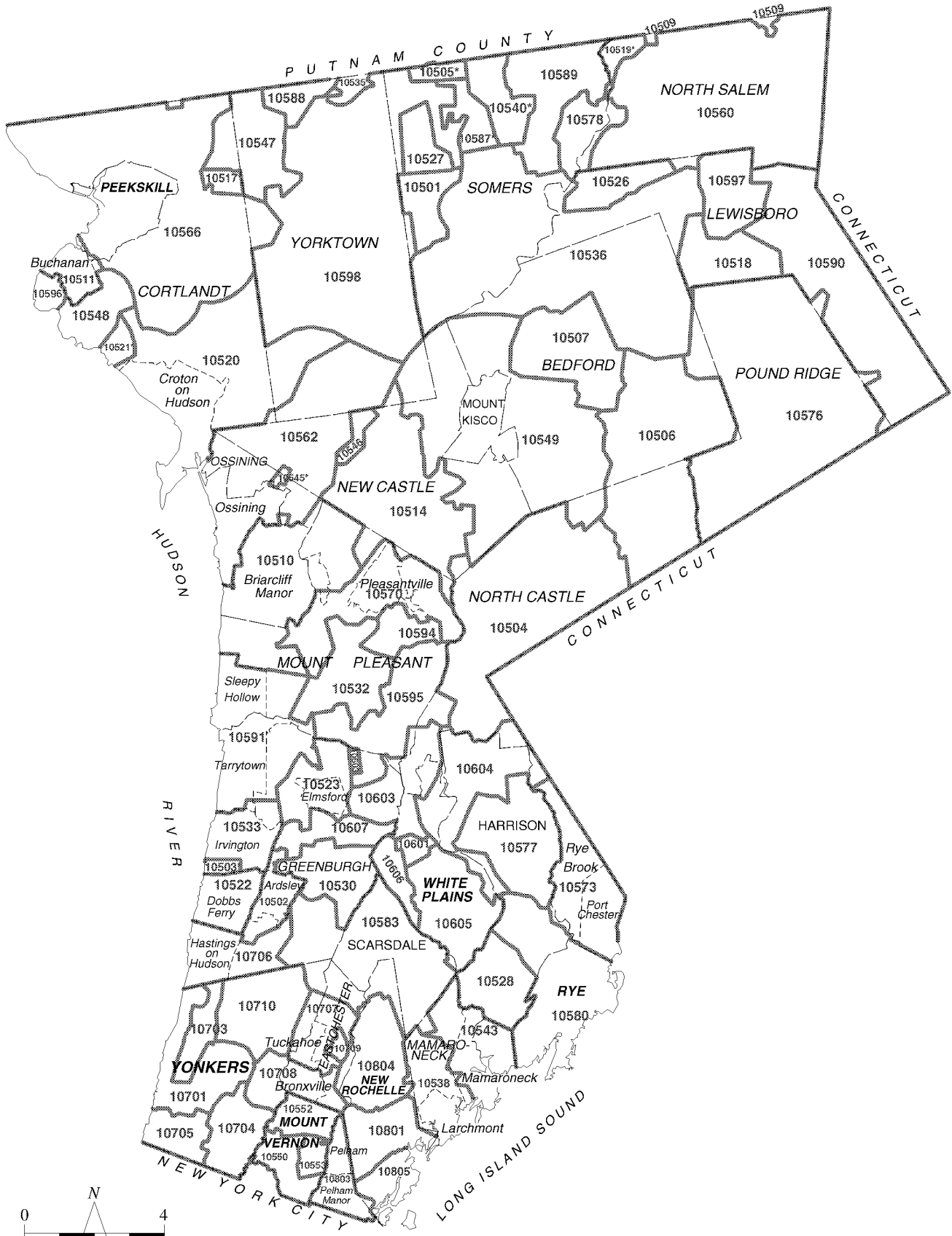
The **17th** district also includes parts of the Bronx.

The **18th** District also includes parts of the Bronx and Queens.

The **19th** district also includes Putnam County and parts of Dutchess & Orange Counties.

The **20th** district also includes all of Rockland County and parts of Orange & Sullivan Counties.

Congressional Districts



Postal Zip Code Areas

WESTCHESTER'S FISCAL PROFILE

The Westchester County government enjoys the highest possible government bond rating (AAA), higher than any other county government in New York State.

Westchester's fiscal position continues to remain strong. Outstanding debt should increase modestly relative to that of other county governments. Sales tax revenue increased 8.5% between 1995 and 1996 reflecting the strength of the local economy. The county had an undesignated fund balance in the 1996 General Fund, which is a continuation of the trend in budget surpluses. *Governing* magazine's ranking of billion-dollar governments---state and local governments that generate more than a billion dollars in annual general revenue---lists Westchester County as #80.

Sound fiscal and economic management has resulted in renewal of the highest ratings from Standards & Poor's, Moody's, and Fitch Investors Service Inc. The county has been rated triple A for all bond offerings since 1988. The county's high credit ratings enable it to pay less in interest charges to improve county facilities, services, and infrastructure. These lower borrowing costs lead to significant savings which can be passed on to local taxpayers. The county property tax levy has grown less than the rate of inflation in recent years.

The county, however, currently operates in a difficult fiscal environment. As pressure continues to resist tax increases and the amount of federal and state aid lags behind program expenditures, spending levels need to be monitored and adjusted in order to hold the line on county property taxes.

COUNTY FINANCIAL PROFILE

	<u>1994</u>	<u>1995</u>	<u>1996</u>
General Fund Revenue (mil.)	\$915.1	\$930.4	\$937.3
Expenditures (mil.)	\$893.5	\$905.1	\$886.4
Fund Balance (end of year in mil.)	\$52.4	\$39.8	\$ 54.7

Source: Westchester County, Comprehensive Annual Financial Report, 1996

COMPARATIVE BOND RATINGS

	<u>Moody's</u>	<u>Standard & Poor's</u>	<u>Fitch's</u>
Westchester County, NY	Aaa	AAA	AAA
Nassau County, NY	Baa1	A-	A
Suffolk County, NY	Baa1	BBB+	A
Putnam County, NY	Aa3		
Rockland County, NY	Aa3	AA	
New York, NY	Baa1	BBB+	A-
Bergen County, NJ	Aaa		
Passaic County, NJ	A1	AAA*	
New York State	A2	A	A+
New Jersey	Aa1	AA+	AA+
Connecticut	Aa3	AA-	AA

*with bond insurance

