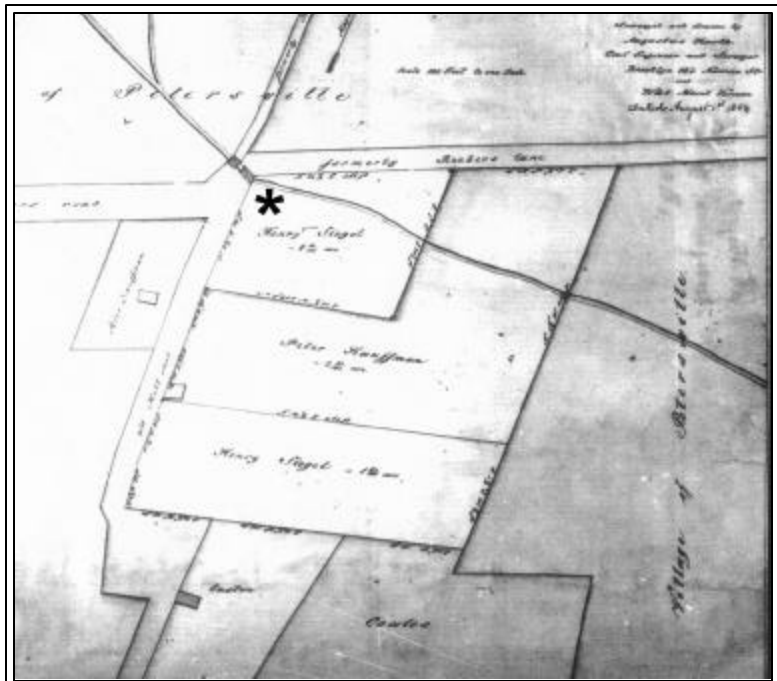
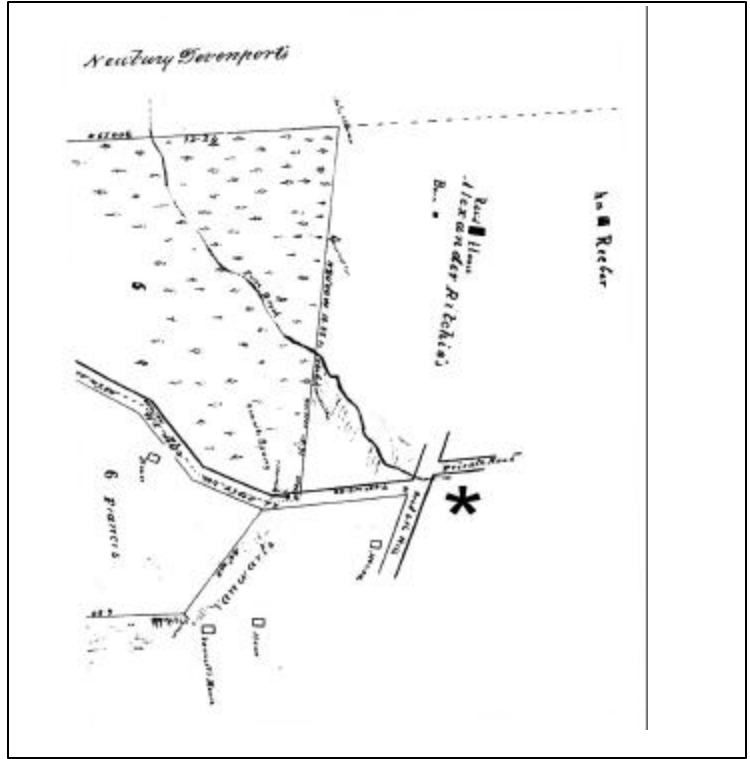


\_\_\_\_\_

\_\_\_\_\_



property was still owned by Alexander Ritchie. The lands east of Ritchie's property and between the study area and the main line of the New York and New Haven Railroad had been subdivided. The railroad, which was completed through New Rochelle in 1848, is seen as a heavy black line running across the bottom of the map. According to the map's title, the





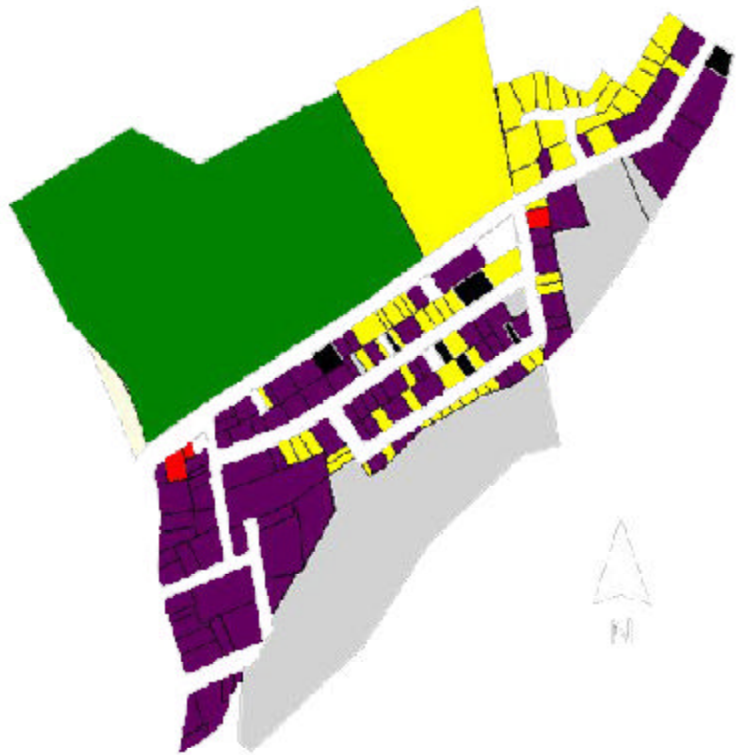




---



---



-  Vacant
-  Industrial
-  Institu-  
tional
-  tional
-  Residential
-  Commercial  
Park





Horizontal bar 1 (light gray)

Horizontal bar 2 (light gray)

Horizontal bar 3 (dark gray)

Horizontal bar 4 (light gray)

Horizontal bar 5 (dark gray)

Horizontal bar 6 (dark gray)

---

---

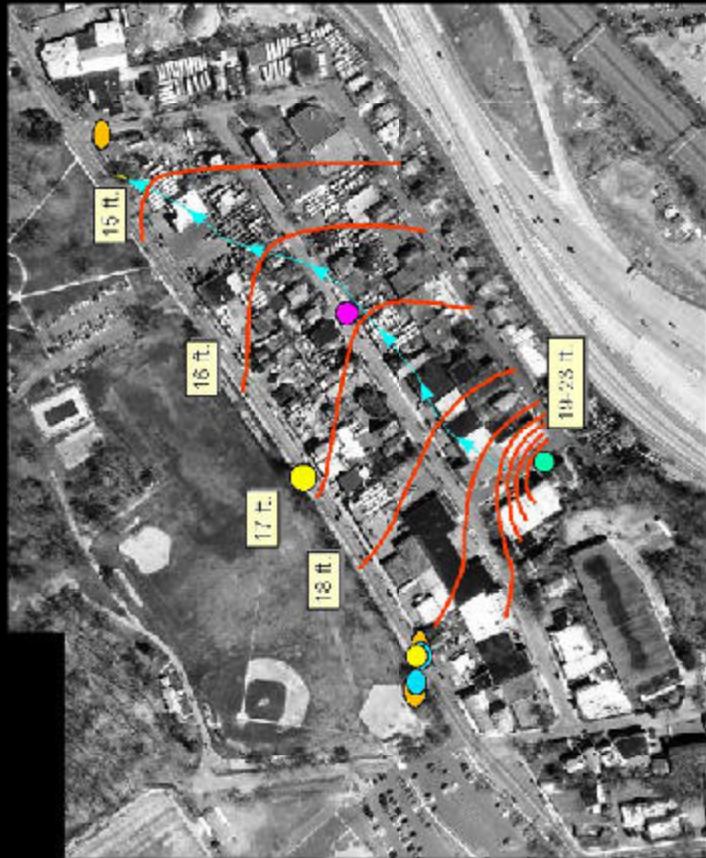


---

---

---

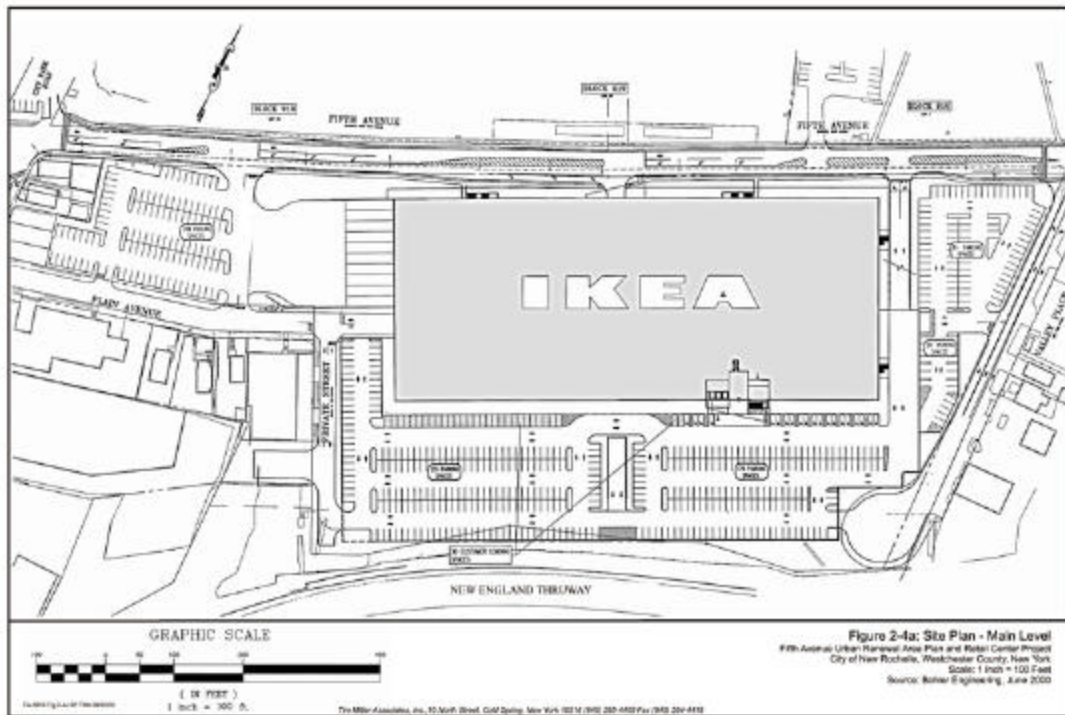
# Spills



- TCE
- DCE
- MTBE
- Gasoline Chemicals
- Benzene
- Elevation
- Groundwater Plume

---







# Properties Owned by IKEA As of 2/26/01



■ IKEA-owned properties, 2/26/01

