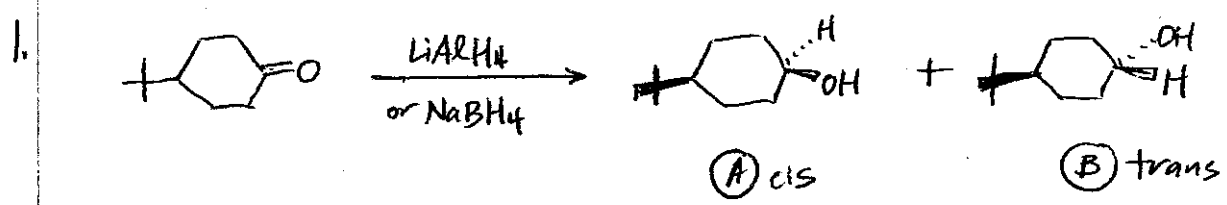
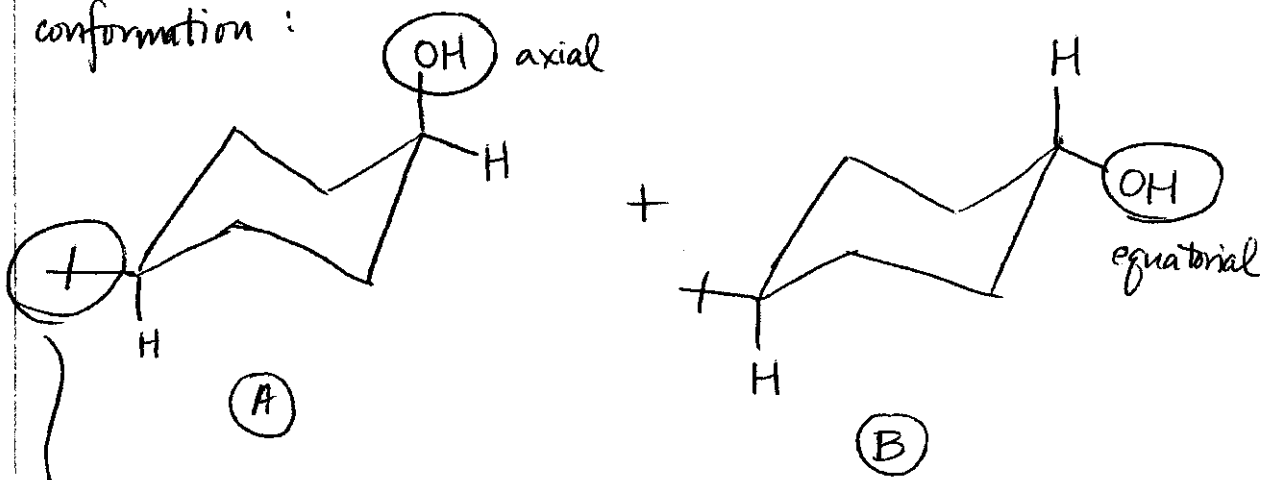


PROBLEM SET #8 SOLUTIONS

CHEM 3231

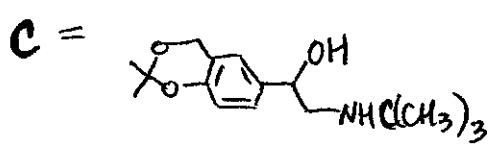


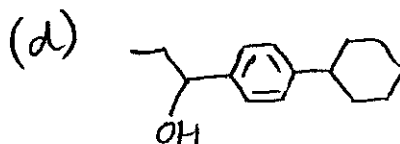
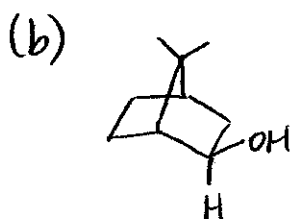
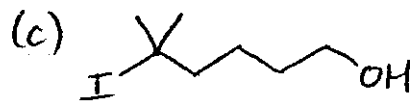
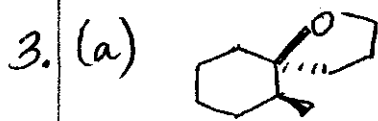
Need to consider that the products will assume the chair conformation:



bulky t-Bu group will be equatorial

Product (B), where both the t-Bu and OH groups are equatorial, will be the preferred product. It will be the more stable product as well.





4. The other regioisomer is not produced because the carbocation leading to this compound is less stable than the one involved in the formation of the major regioisomer.

