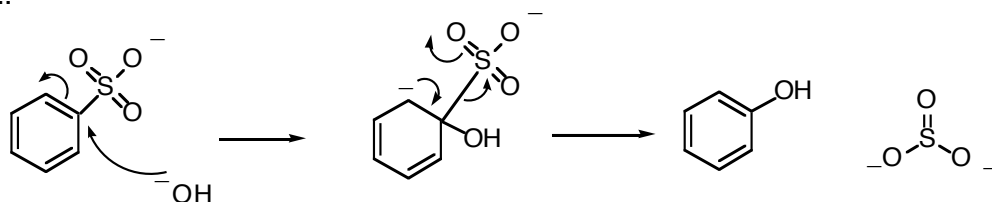


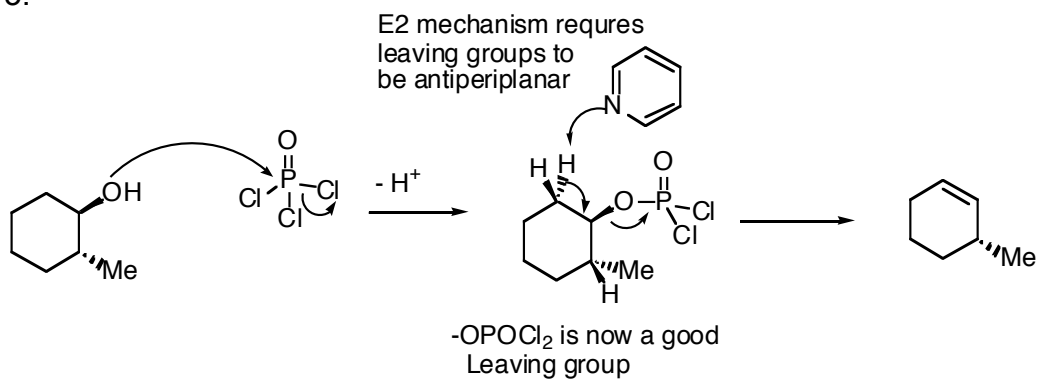
Answer Key – Problem Set #3

- Due to the electronegativity of Fluorine, $-CF_3$ groups are much more electron withdrawing than methyl groups. They help stabilize the developing negative charge on oxygen as a proton is pulled off. Therefore the alcohol on the right is more acidic.

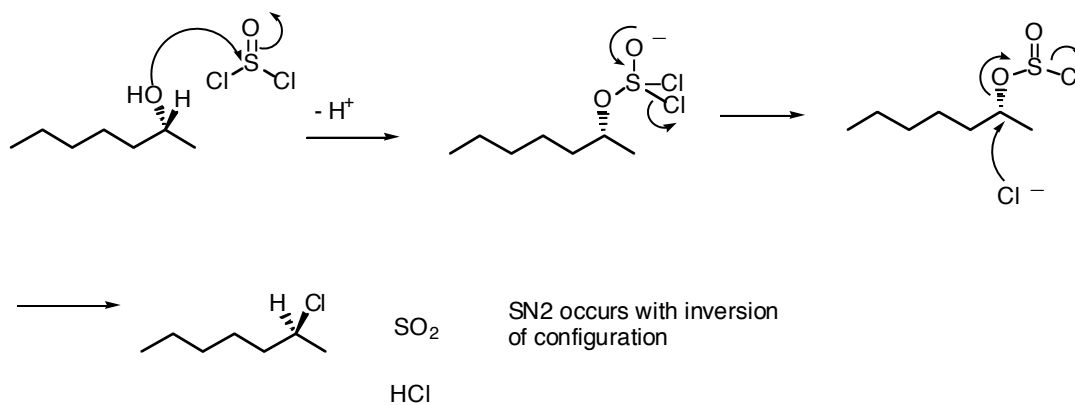
2.



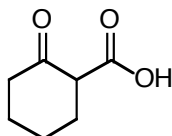
3.

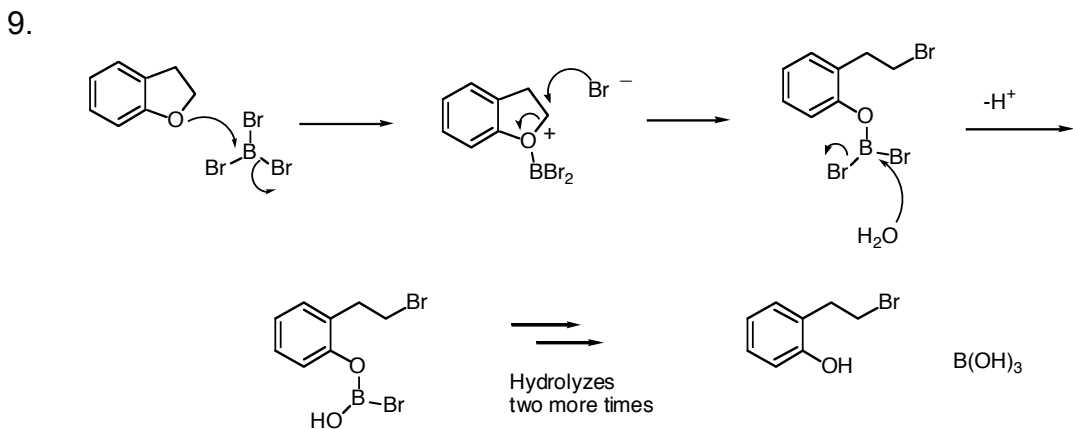
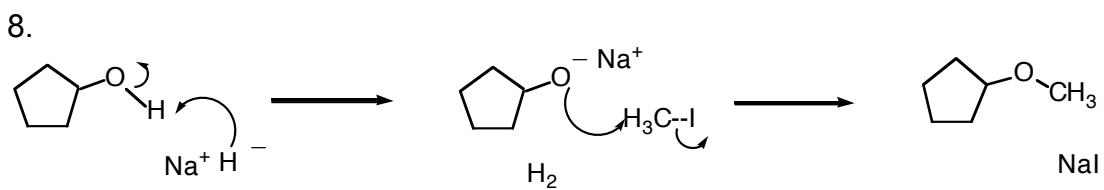
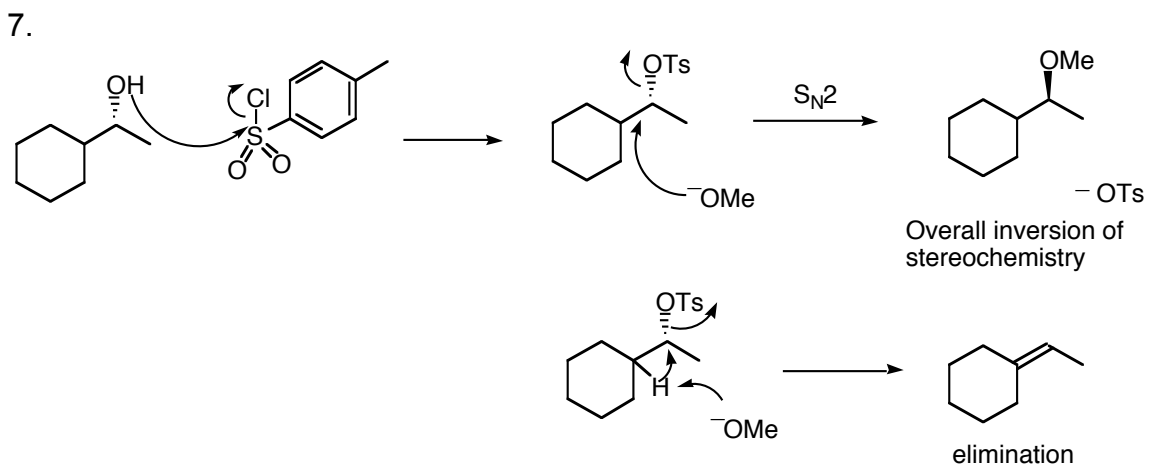
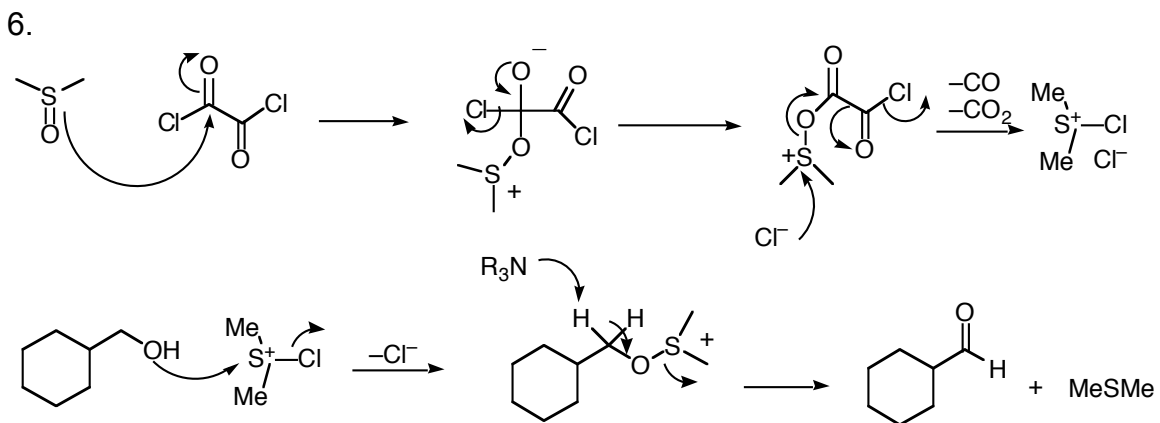


4.

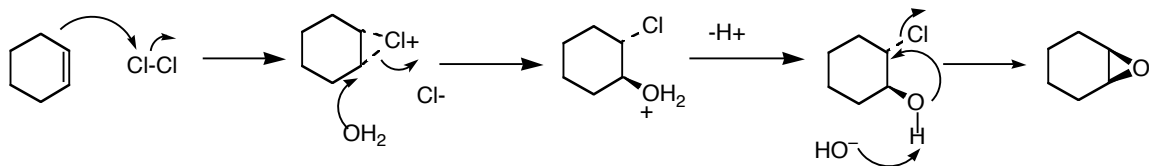


5.

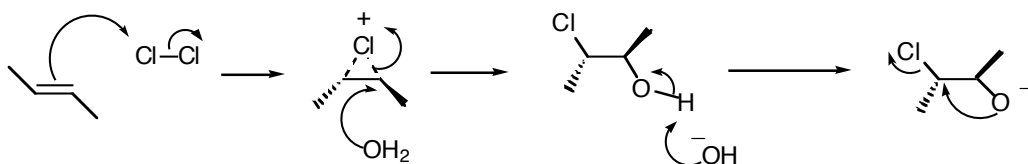




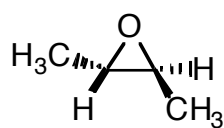
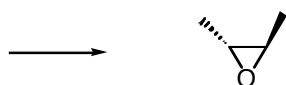
10.



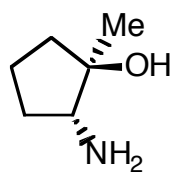
11.



12.



13.



14.

