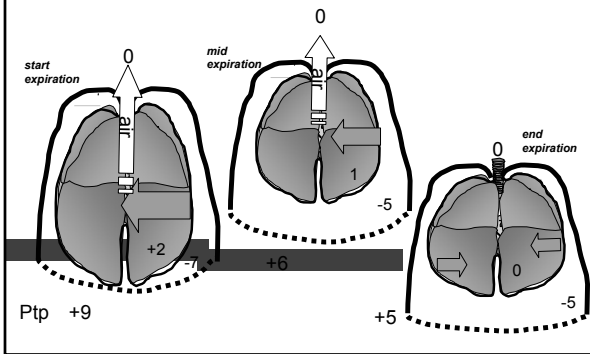


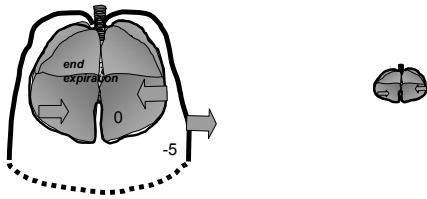
Transpulmonary pressures during expiration



What keeps the lung inflated at end-expiration?

1. The negative Ppl

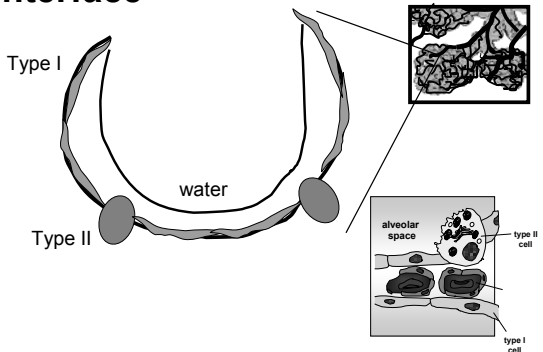
Lungs collapse if chest is opened



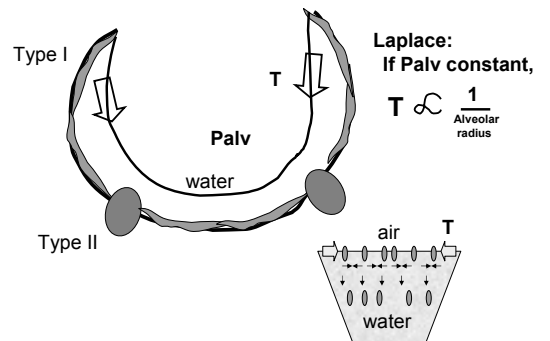
What keeps the lung inflated at end-expiration?

2. Alveolar surfactant
(phospholipid secreted by alveolar type II cells)

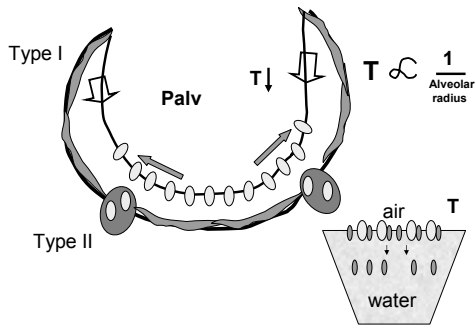
The alveolar air-water interface



Air-water interfacial tension



Alveolar surfactant decreases air-water tension



Lung volumes

