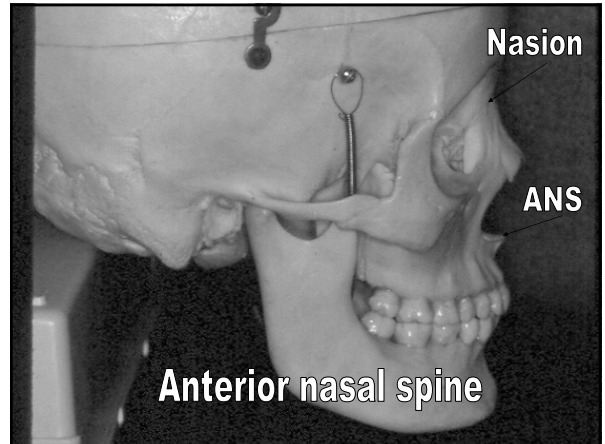
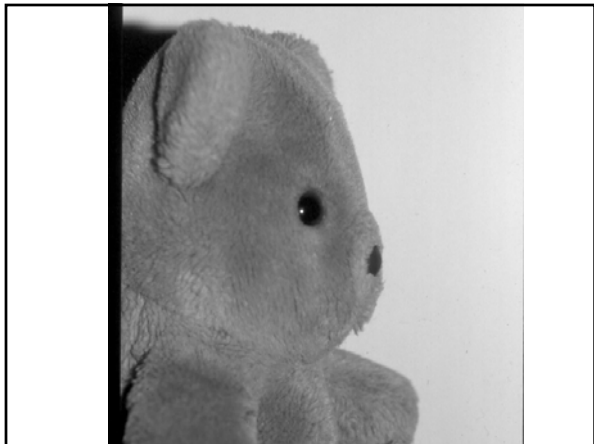
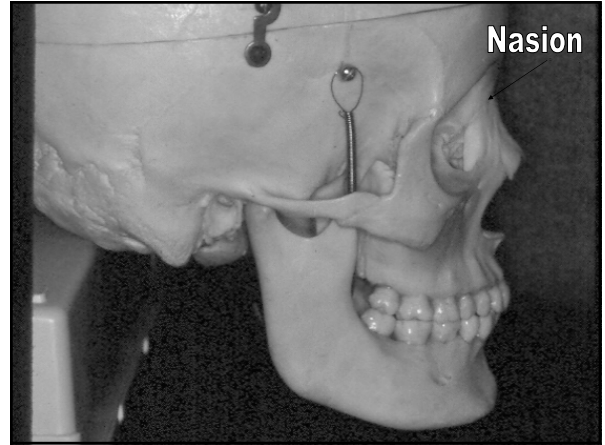
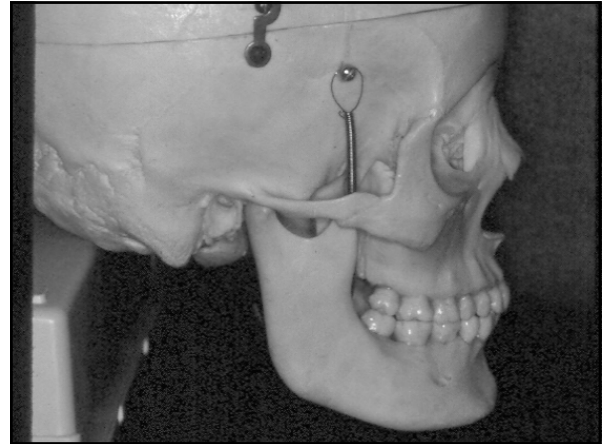
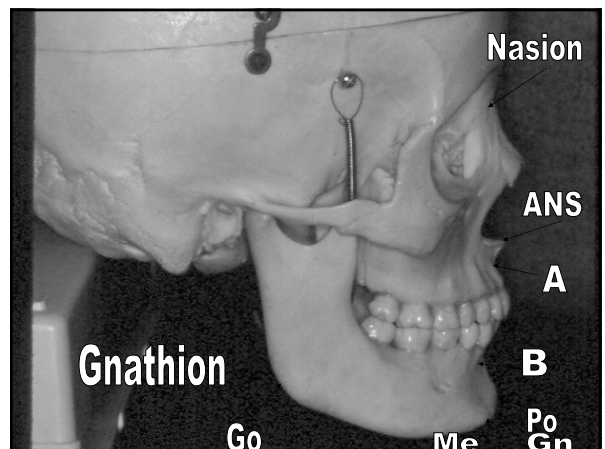
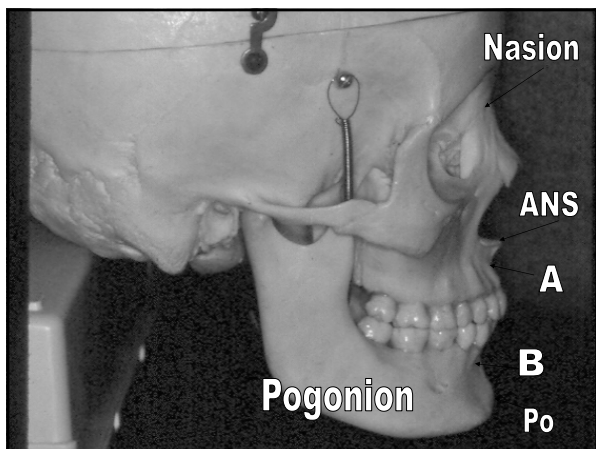
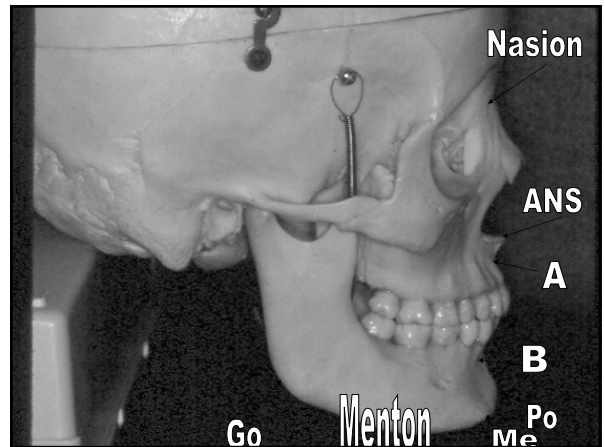
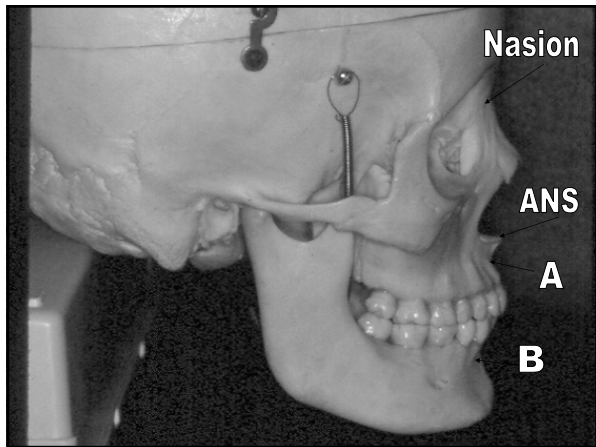
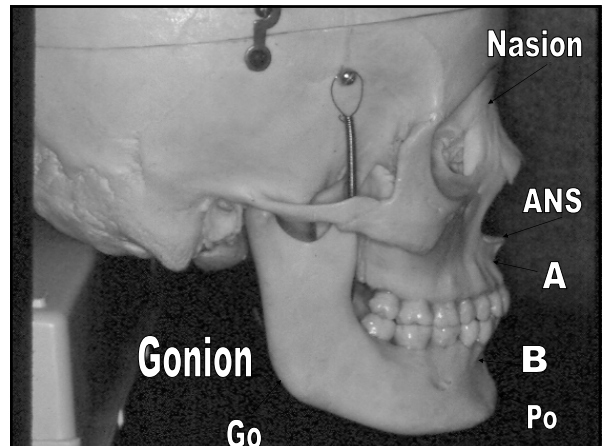
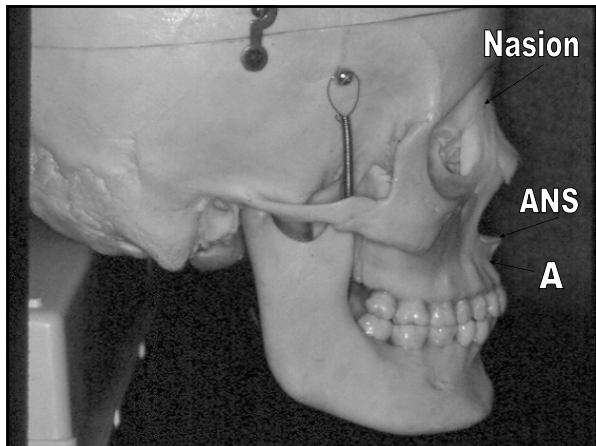
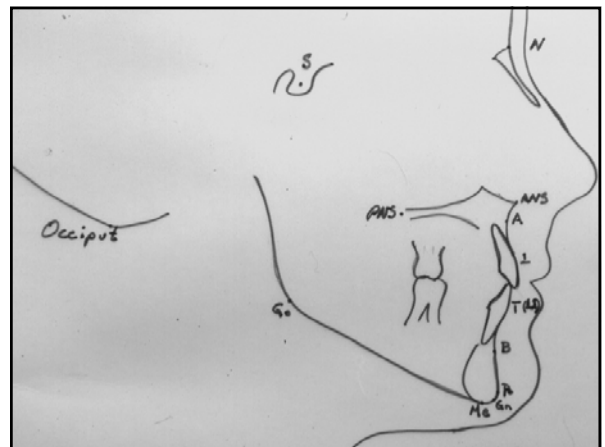
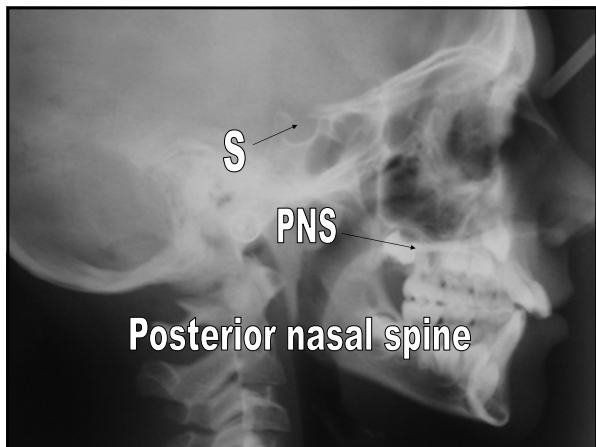
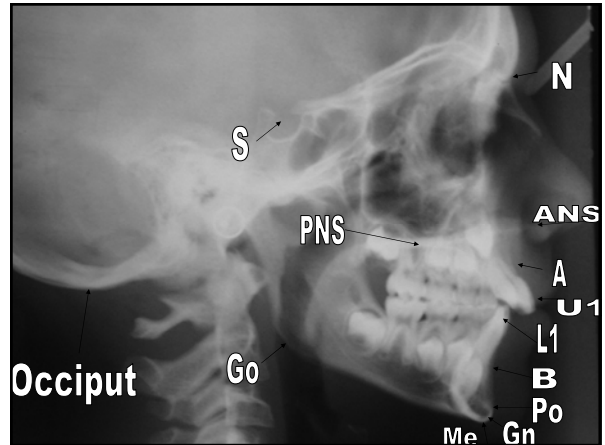
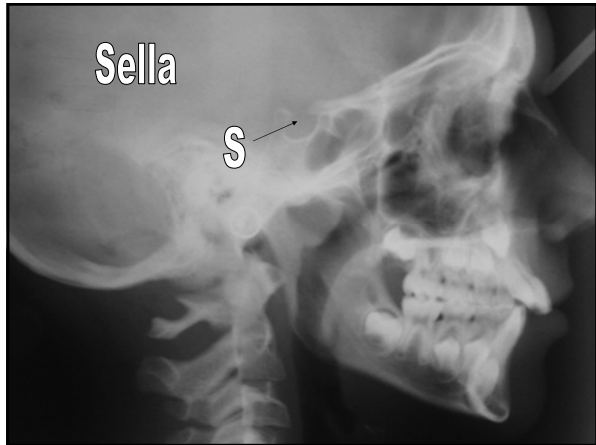
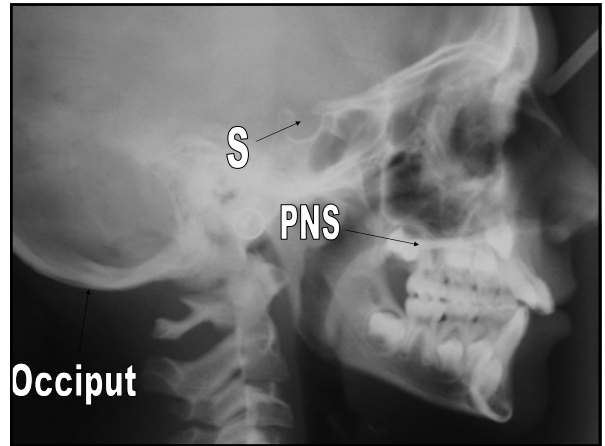


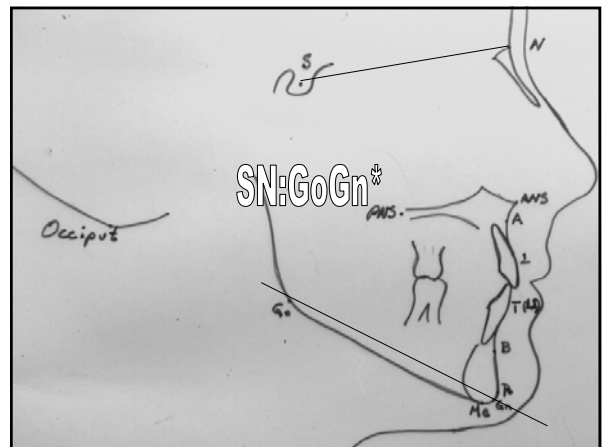
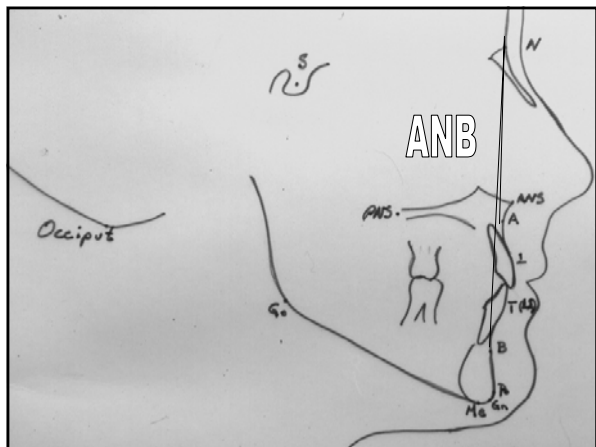
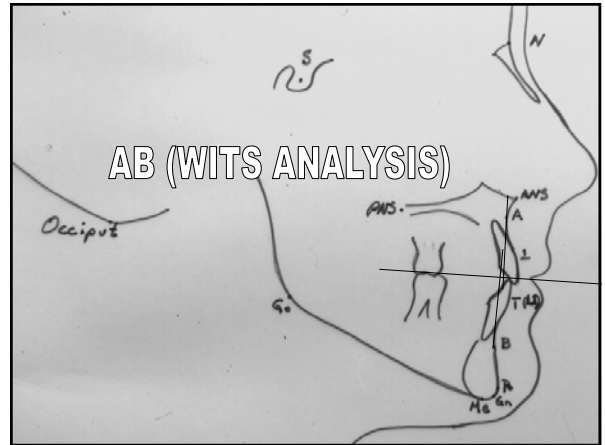
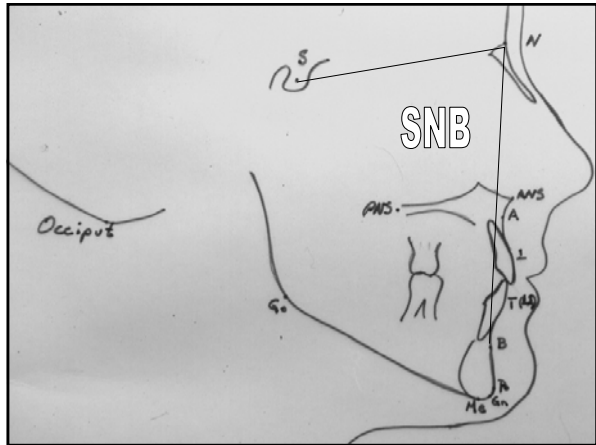
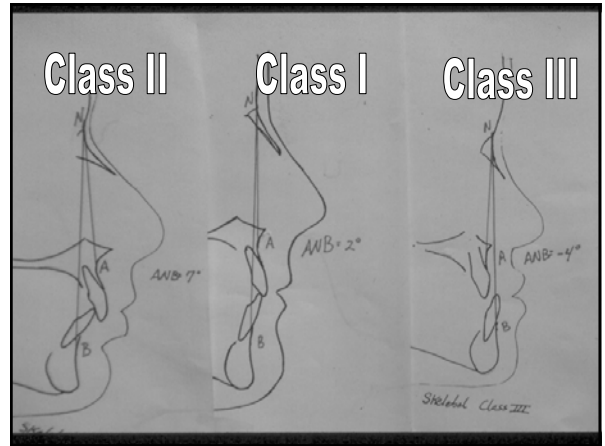
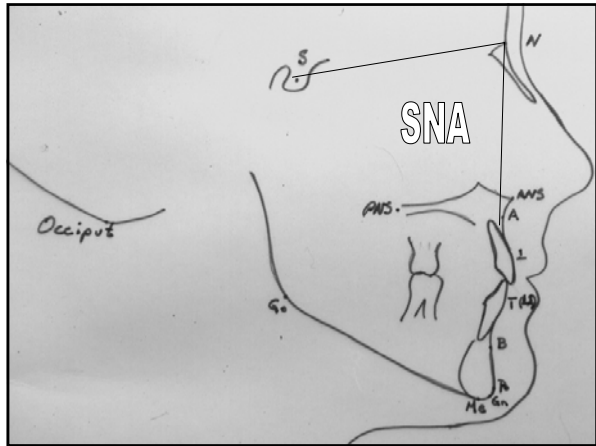
CEPHALOMETRIC
ANALYSIS

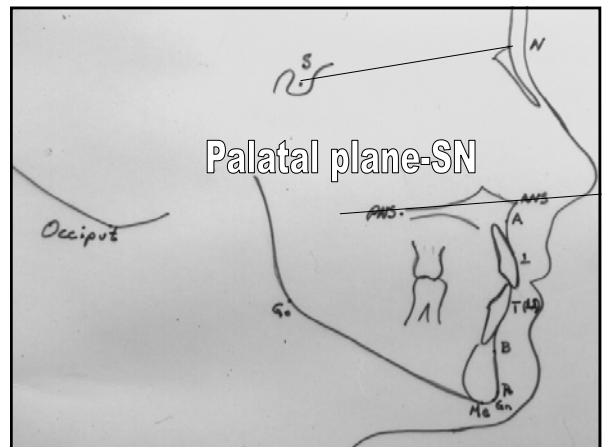
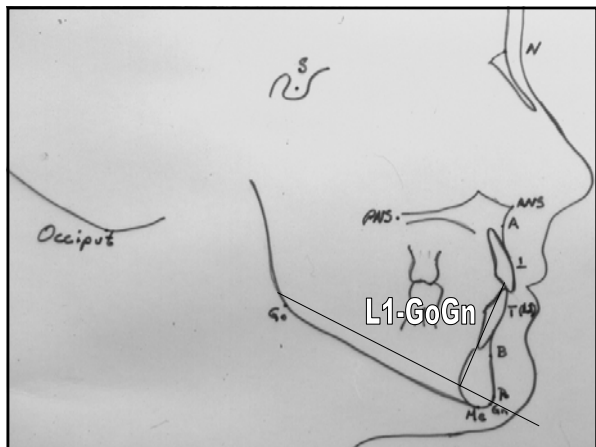
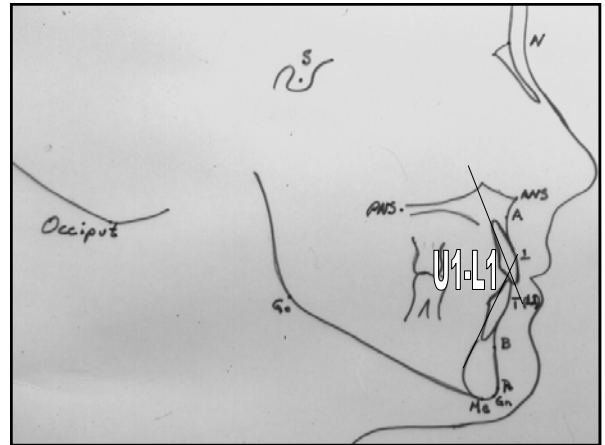
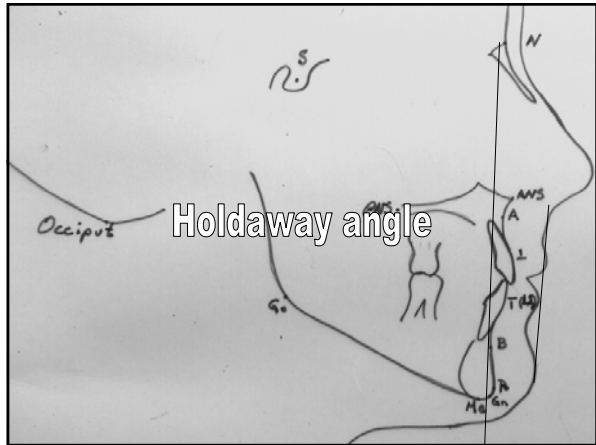
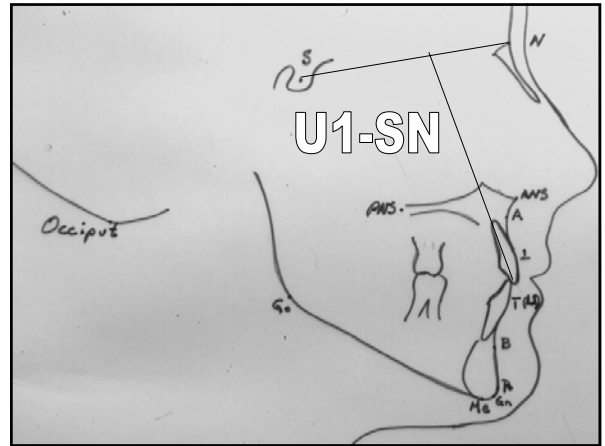
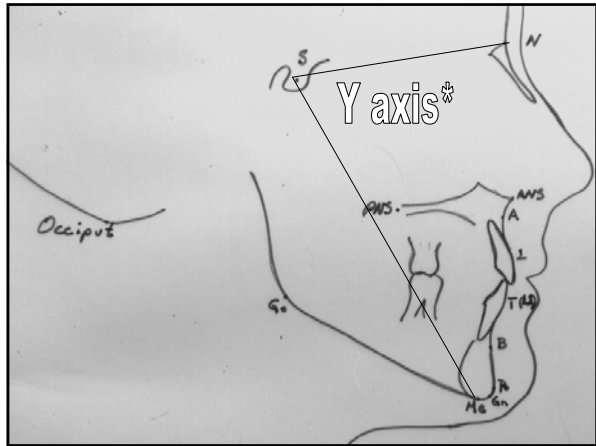


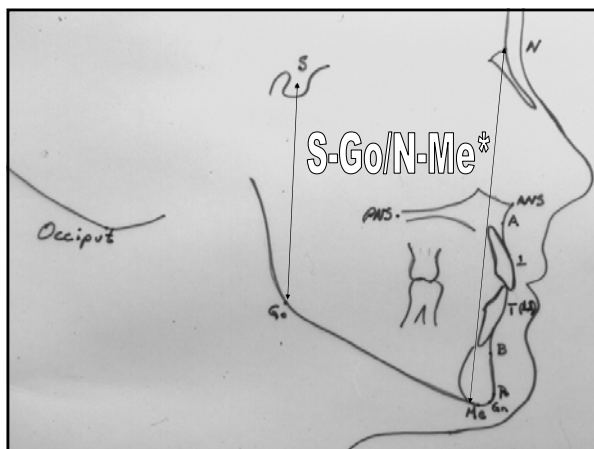
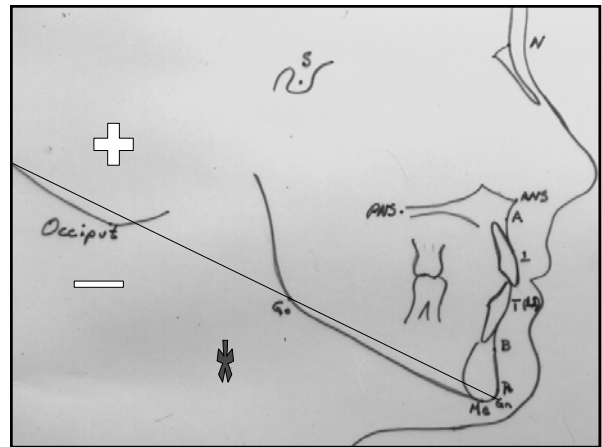
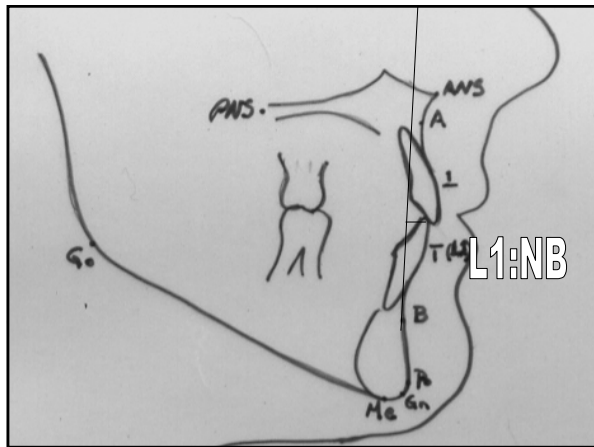
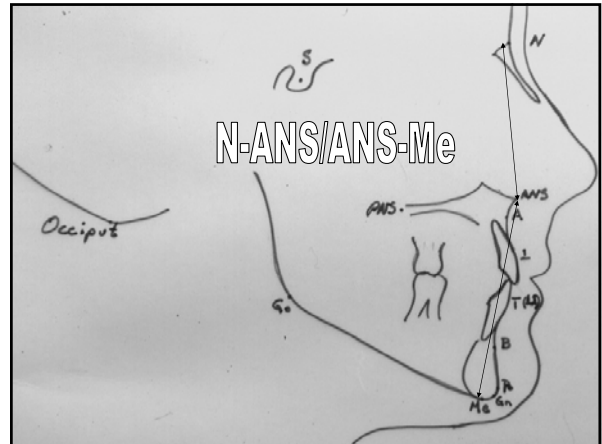
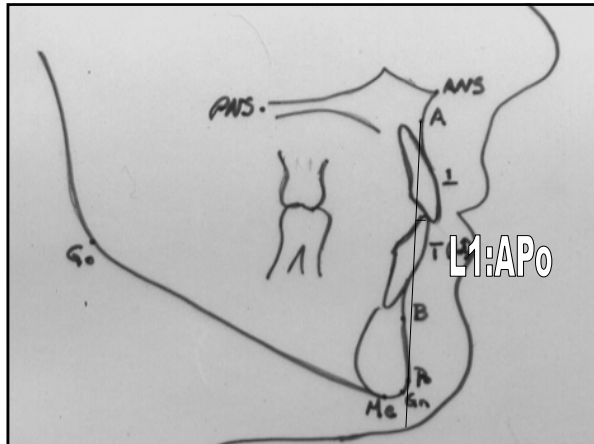












- ### Indicators of growth direction
- SN:GoGn
 - Y axis
 - Ratio posterior/anterior face height
S-Go/N-Me
 - Extension of GoGn to occiput

Hyperdivergent, unfavorable growth

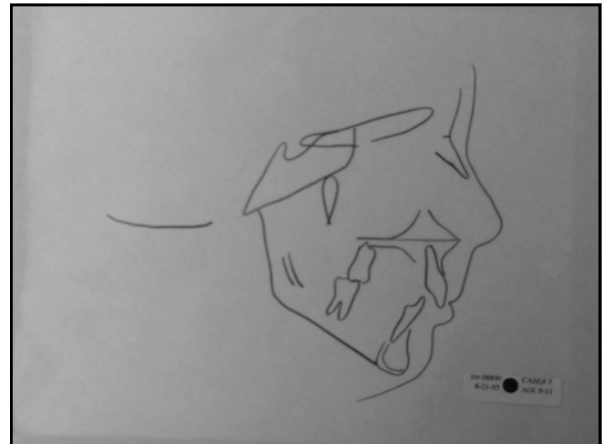
VERTICAL



HORIZONTAL



Hypodivergent, favorable growth



CEPHALOMETRIC SUMMARY

Area of Study	Measurement	Standard Child/Adult	1A-10	1A-15
Mandible to Cranial Base	SNA	80.8E±0.3	80.5	
Mandible to Cranial Base	SND	78.0B±0.0	72	
Mandible-Mandibular Relations	ANS WITS (A-B)	2.8±0.0 1.0mm	8.5 6.5	
Vertical Angle	WANS/ANS/ME	6.8	6.75	
Mandible and Mandibular Incisor Position	U1 SN U1 L1 L1 GPa L1 APN L1 SN	105.9±0.0 130.4±11.0 92.8±1.0 0 mm 4 mm	95 142 98 -4 2	
Soft Tissue	Holladay Angle	8.0	14	
Direction of Growth	SN GPa Y ang Skw/Nsk Ensemble GPa	32.7±1.7 -0.6 -0.65 +0.1	39 72 6.58 +	

A-1 Pre-treatment Records
A-2 Interim Records
B Post-treatment Records

Colson

CEPHALOMETRIC SUMMARY

Area of Study	Measurement	Standard Child/Adult	1A-10	1A-15	16
Mandible to Cranial Base	SNA	80.8E±0.3	80.5		97
Mandible to Cranial Base	SND	78.0B±0.0	72		74
Mandible-Mandibular Relations	ANS WITS (A-B)	2.8±0.0 1.0mm	8.5 6.5		5 -2
Vertical Angle	WANS/ANS/ME	6.8	6.75		6.74
Mandible and Mandibular Incisor Position	U1 SN U1 L1 L1 GPa L1 APN L1 SN	105.9±0.0 130.4±11.0 92.8±1.0 0 mm 4 mm	95 142 98 -4 2		98 124 100 -4 4
Soft Tissue	Holladay Angle	8.0	14		7
Direction of Growth	SN GPa Y ang Skw/Nsk Ensemble GPa	32.7±1.7 -0.6 -0.65 +0.1	39 72 6.58 +		36 72 6.62 +

A-1 Pre-treatment Records
A-2 Interim Records
B Post-treatment Records

Colson

