

Retinal Ganglion

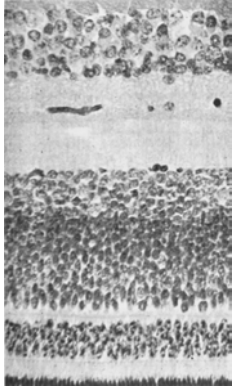
LGN - M: LRF, LC & TF

LGN - P: SRF, CC & SF

Sup Coll-eye mov/sacc

Pre Tect-light reflex

SCN-melanopsin (circ rhythm)



Interneurons

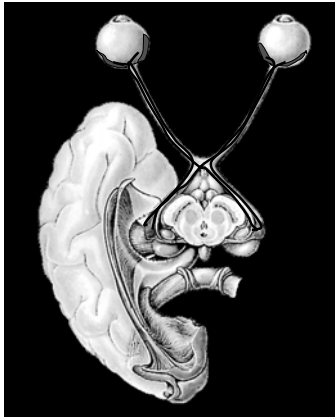
Amacrine

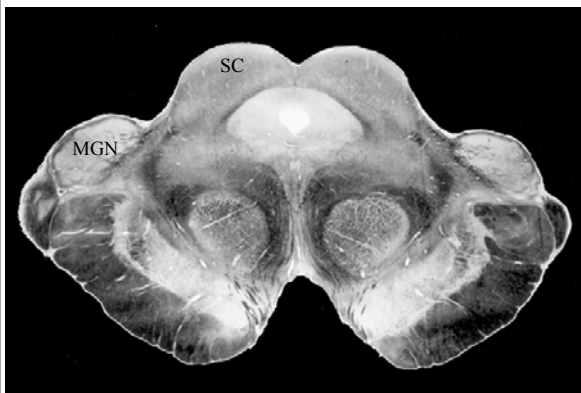
Bipolar

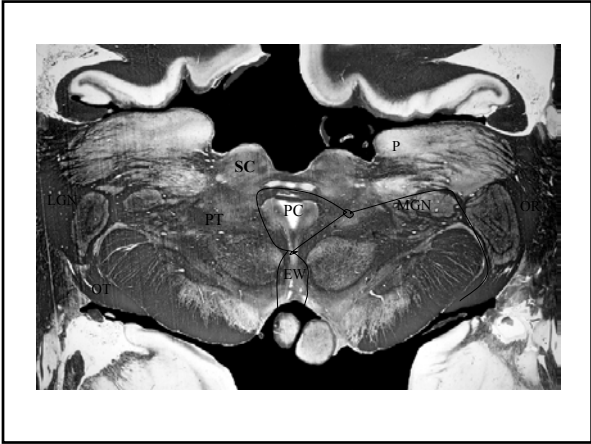
Horizontal

Photoreceptors

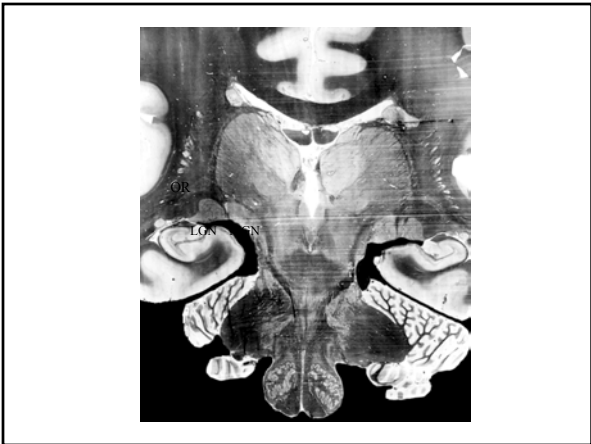
Rods & Cones

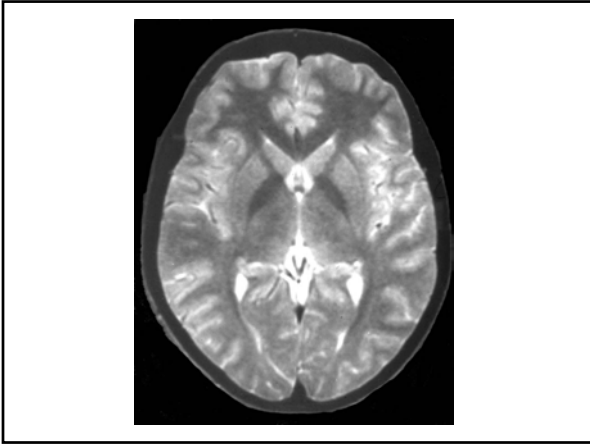










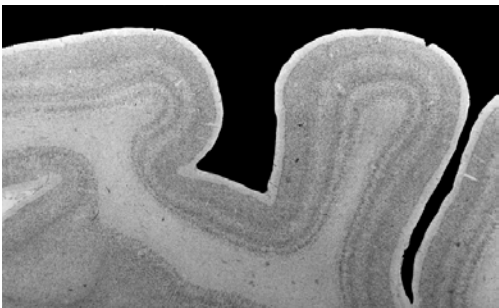


Striate Cortex (V1)



V1 or Striate Cortex

INPUT: P input - 4A and 4CB M input - 4Cce
OUTPUT: 2,3 & 4B extrastriate cortex and contralateral cortex via CC
5 Subcortical structures - sup coll, pulvinar, pons
6 Reciprocal structures- LGN



Ocular Dominance Columns

