

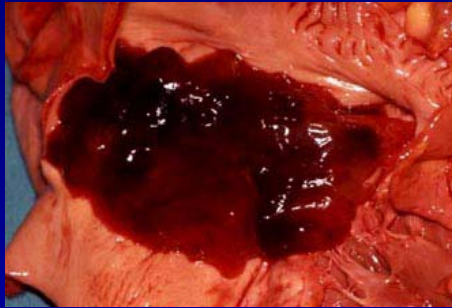
Cardiac Tumors

Primary Cardiac: Benign

- **Myxoma (>50%)**
- **Lipoma**
- **Rhabdomyoma**
- **Fibroma**
- **Hemangioma**
- **Papillary fibroelastoma (aortic valve)**

Myxoma

- Most are pedunculated masses arising from fossa ovalis region and extending into LA. Most others extend into RA.



Clinical Syndrome

- **Obstruction of MV inflow**
- **Emboli**
- **Constitutional (paraneoplastic)**

Obstruction

- **Dyspnea**
- **Syncope or near syncope**
- **May be positional**

Constitutional Symptoms

- **Fevers, weight loss, increased IgG, increased ESR, increased ANA, hemolytic anemia**
- **Due to production of inflammatory cytokines (IL-6), tumor necrosis/embolization**

Other Benign Tumors

- **Usually extend into ventricular cavity**
- **May cause rhythm/conduction disturbance or obstruction to flow**

Malignant: Primary

- Primary tumors are sarcomas
- Course rapid
- Pulmonary metastases

Malignant: Secondary

- Usually carcinomas (lung, breast)
- Usually already in chest (i.e. lungs and/or pleura)
- Most often pericardial space is first and most prominently involved
- Renal cell carcinoma -> IVC -> right heart
- Melanoma/Lymphoma