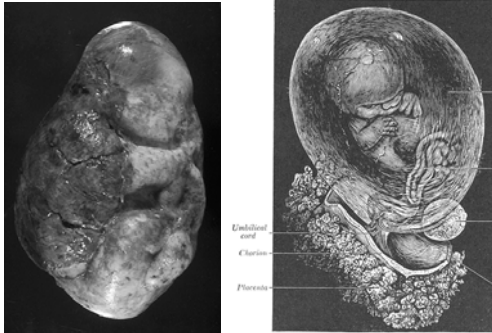
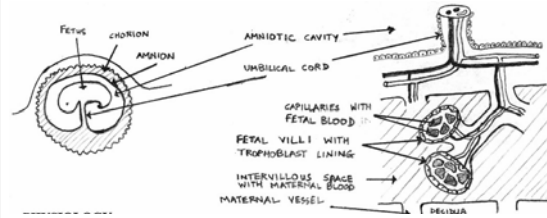


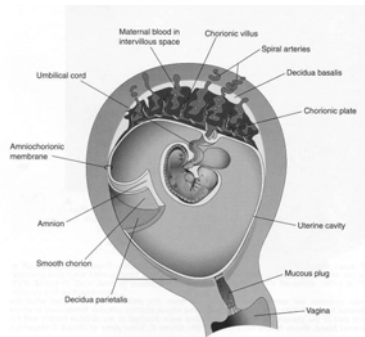
The feto-placental unit



EMBRYOLOGY AND ANATOMY:

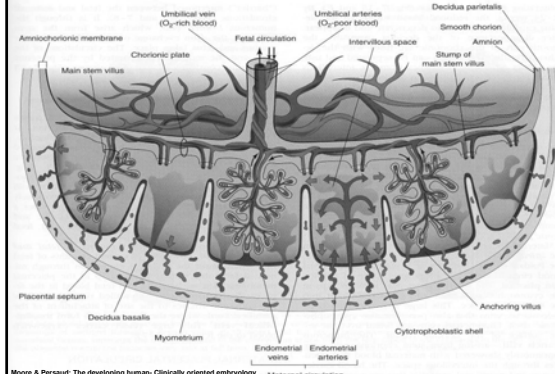


EMBRYOLOGY AND ANATOMY:



Moore & Persaud: The developing human- Clinically oriented embryology

EMBRYOLOGY AND ANATOMY:

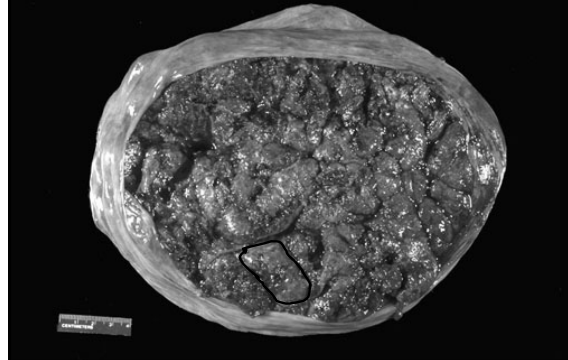


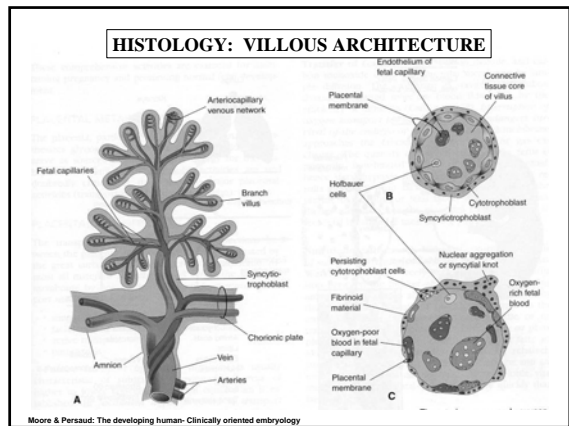
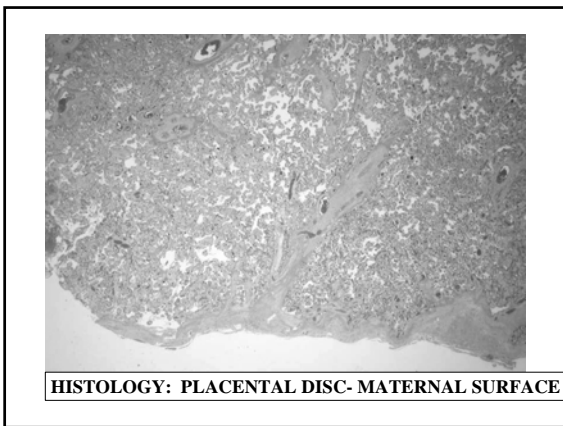
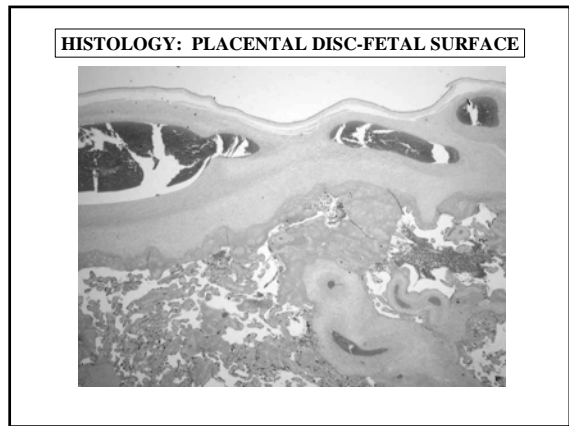
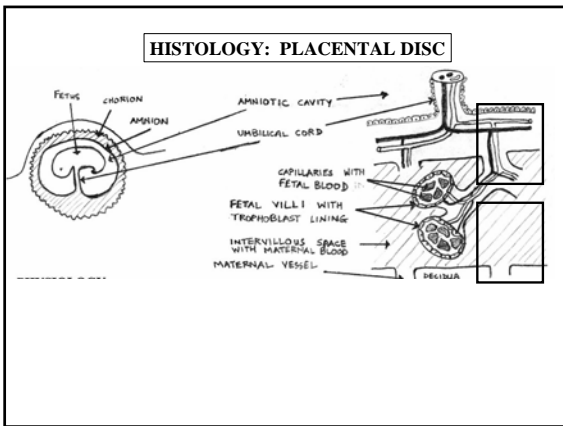
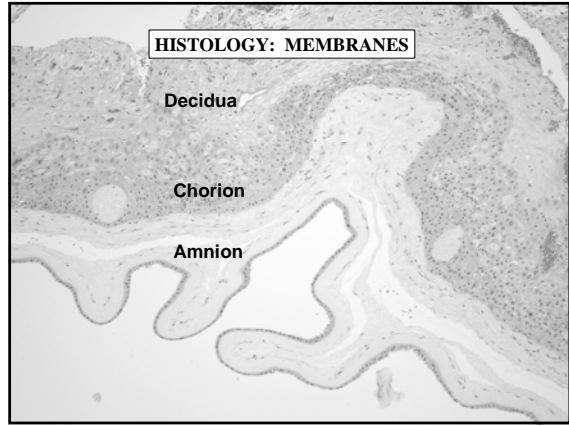
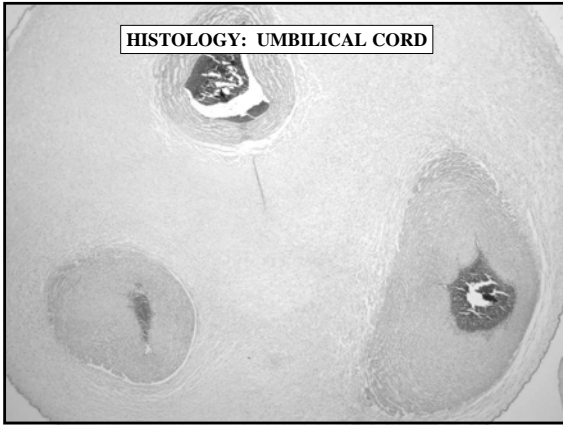
Moore & Persaud: The developing human- Clinically oriented embryology

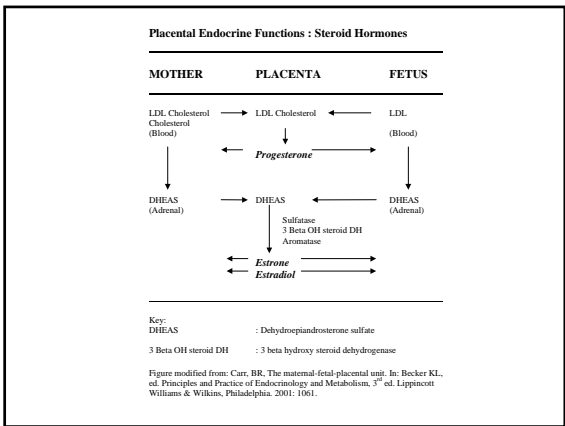
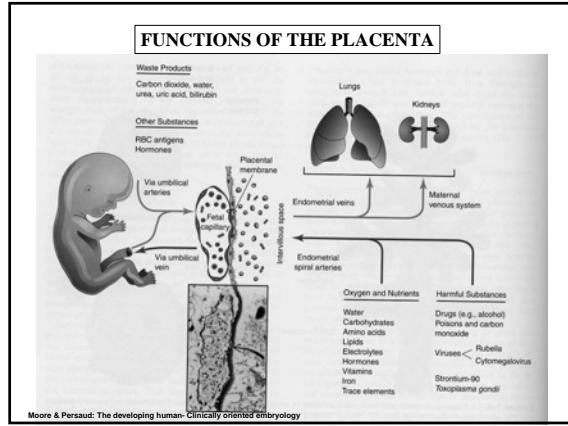
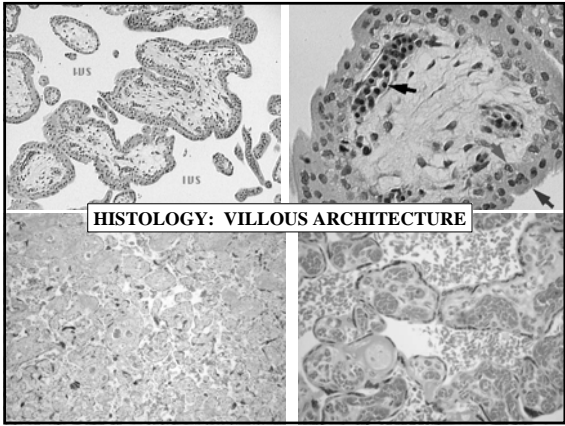
EMBRYOLOGY AND ANATOMY: FETAL SURFACE



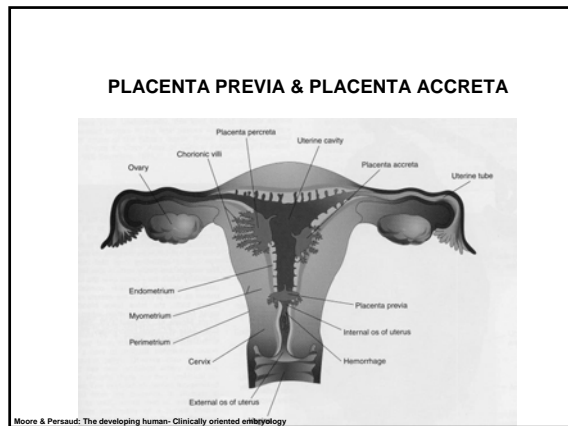
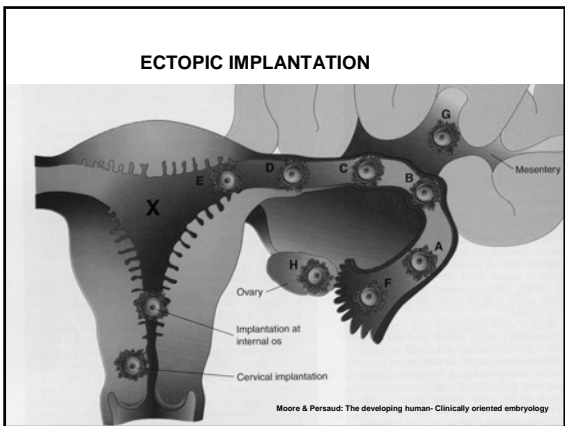
EMBRYOLOGY AND ANATOMY: MATERNAL SURFACE





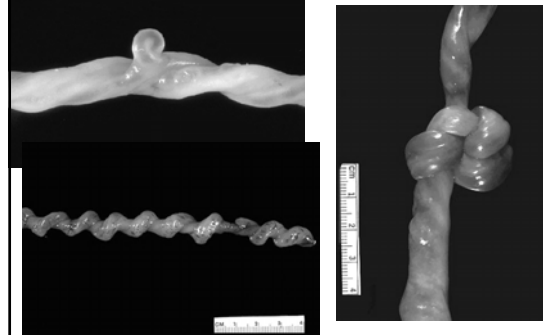


DEVELOPMENTAL PROBLEMS



MECHANICAL PROBLEMS

CORD KNOTS & TWISTS

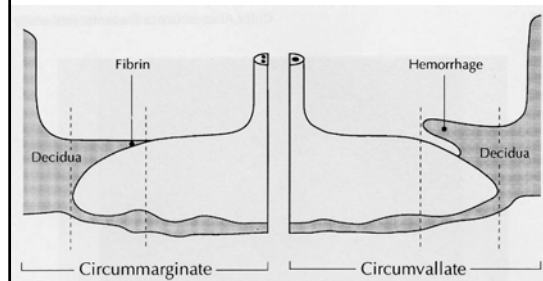


CORD: VELAMENTOUS INSERTION

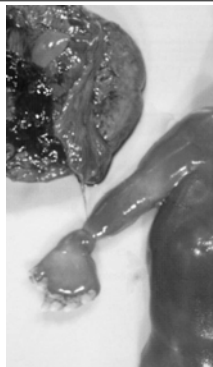


Kaplan: Color atlas of gross placental pathology.

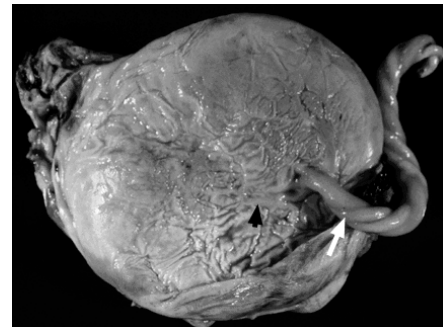
ABNORMAL MEMBRANE ATTACHMENT

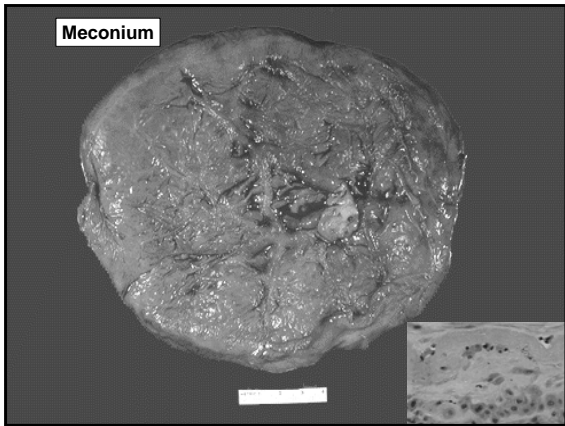
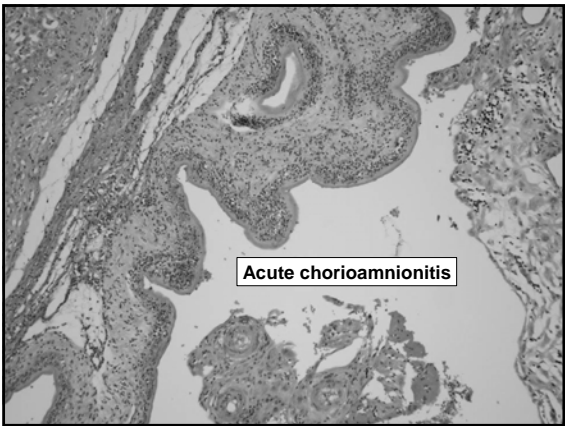
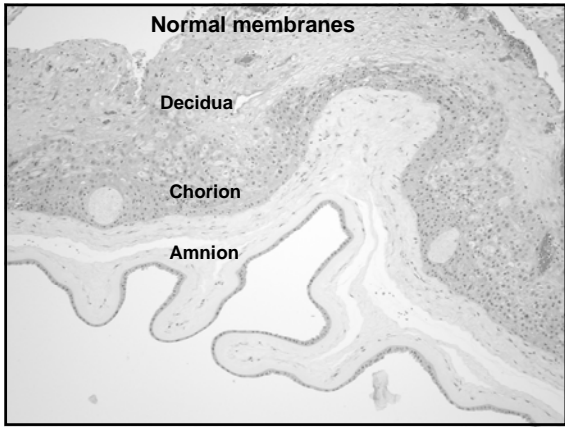
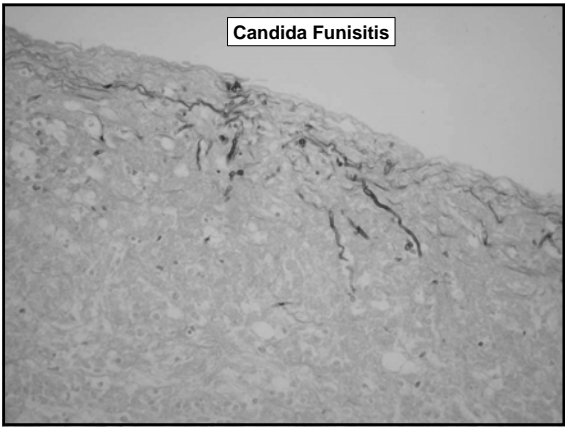
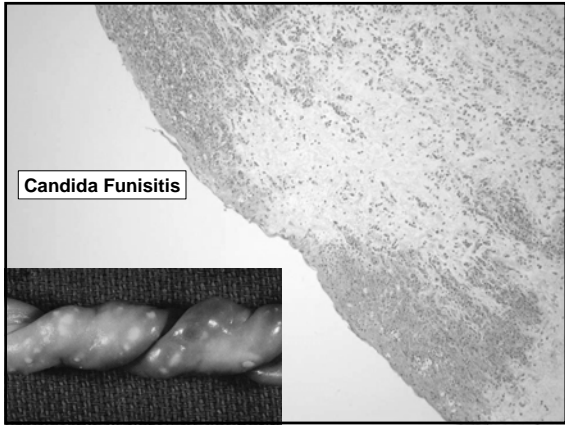
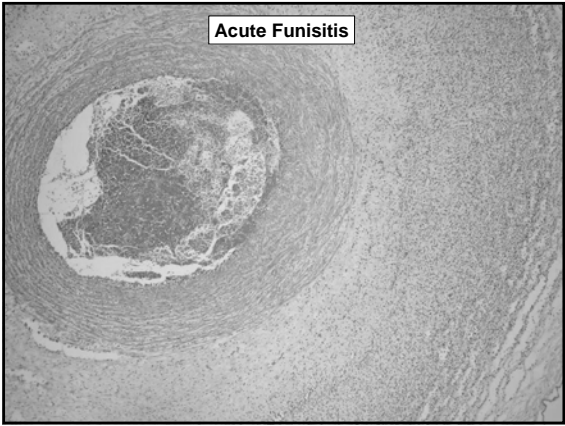


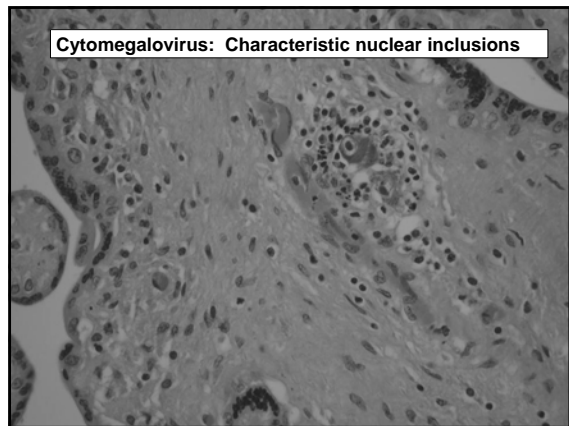
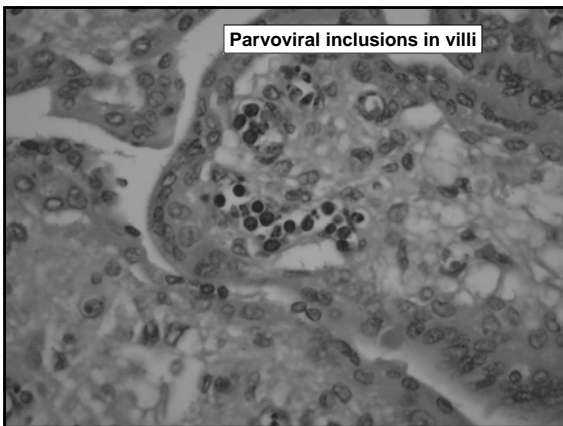
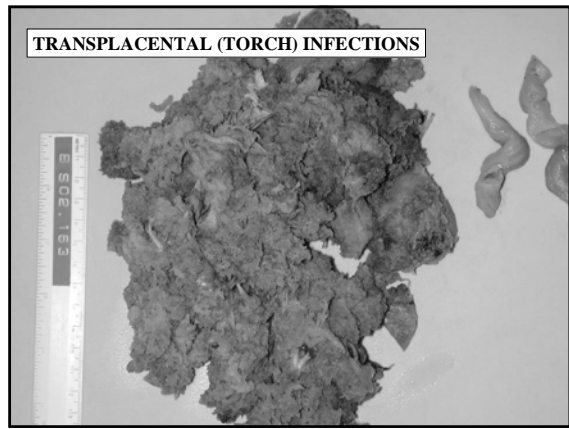
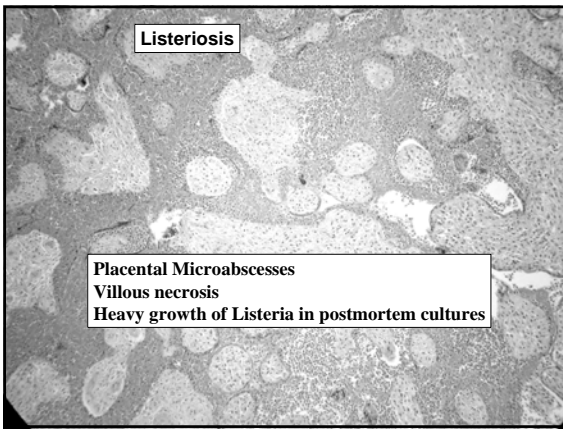
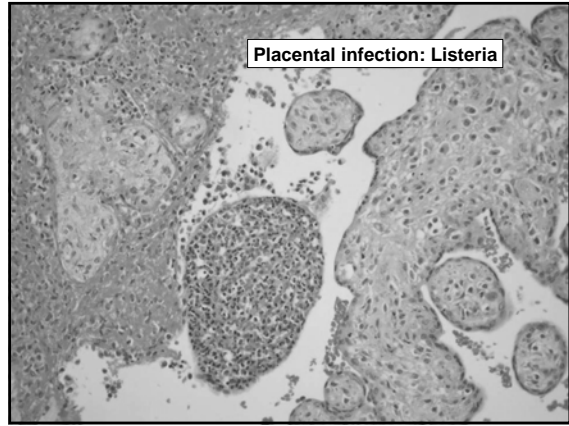
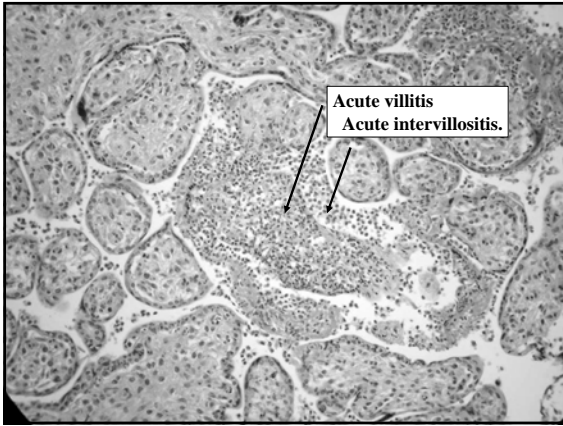
MEMBRANE RUPTURE: AMPUTATIONS

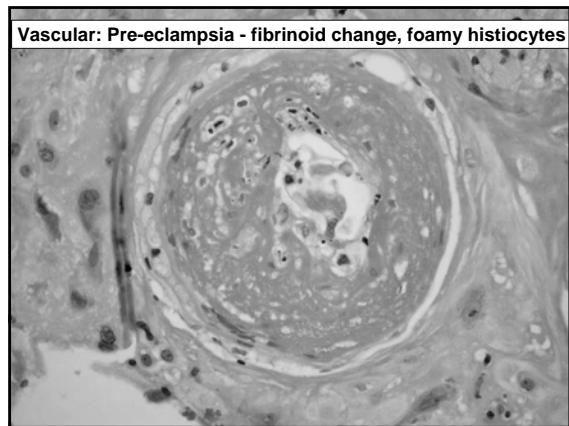
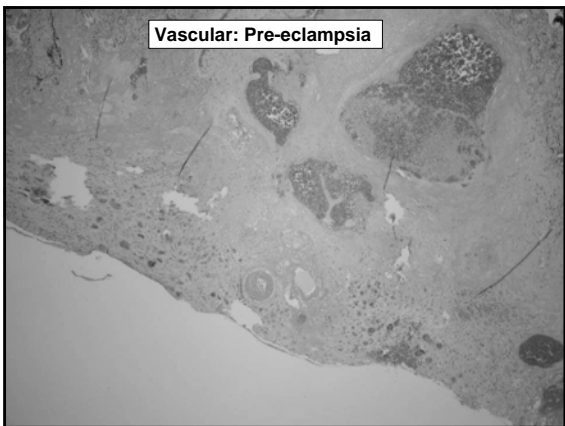
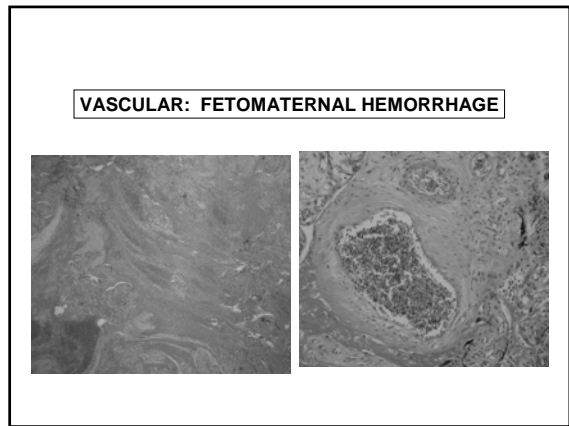
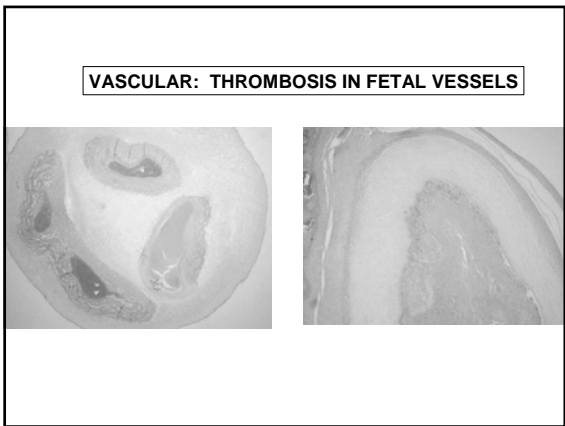
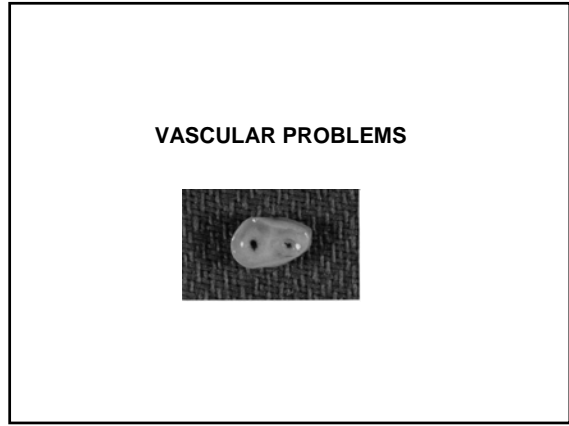
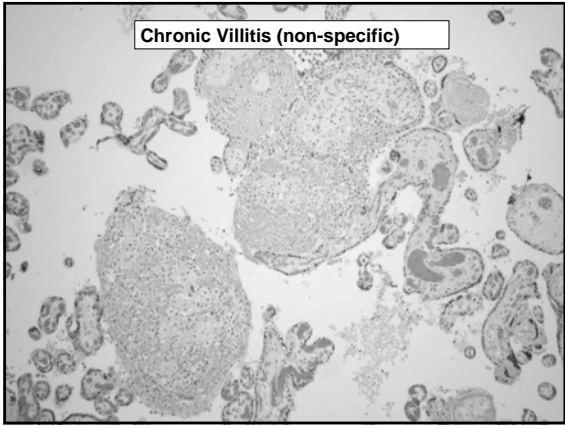


INFLAMMATION: CHORIOAMNIONITIS

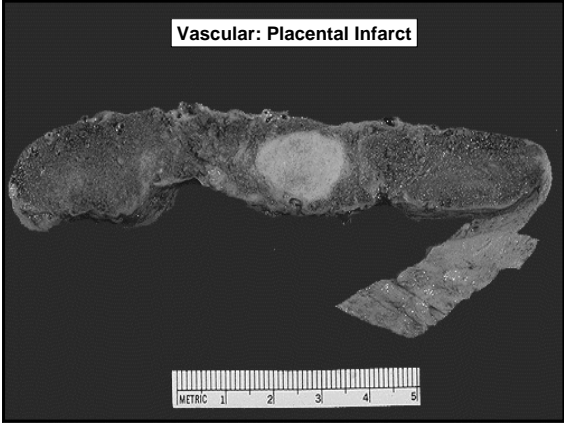




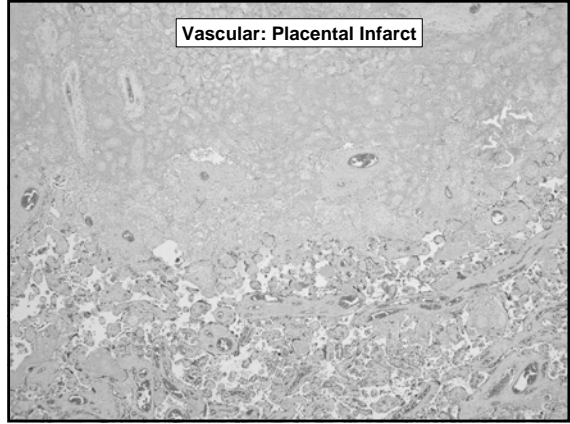




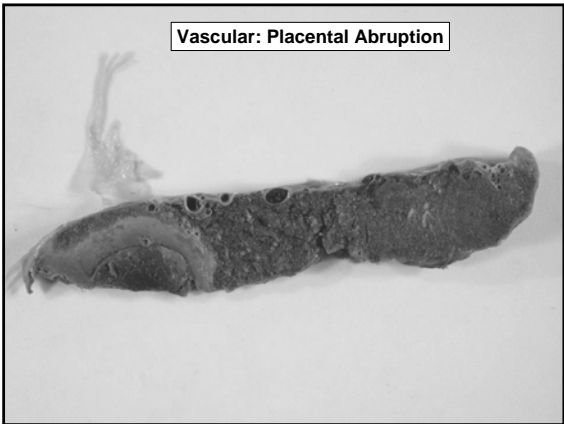
Vascular: Placental Infarct



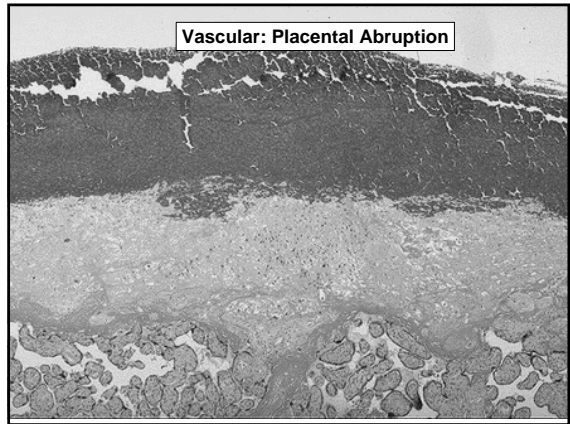
Vascular: Placental Infarct



Vascular: Placental Abruption

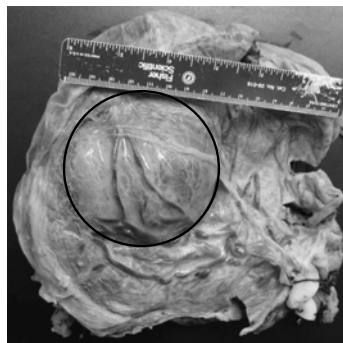


Vascular: Placental Abruption

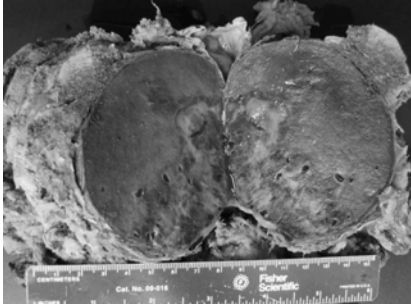


NEOPLASIA

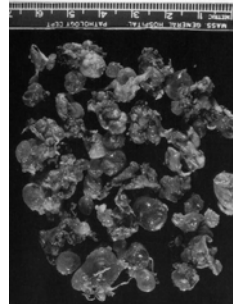
CHORANGIOMA



CHORANGIOMA



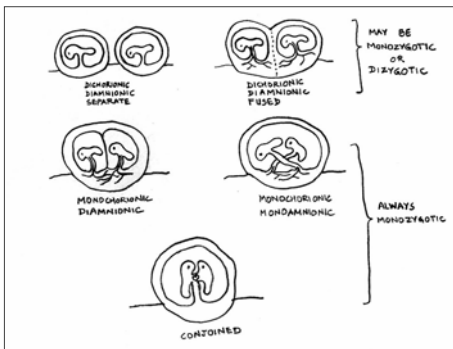
HYDATIDIFORM MOLES



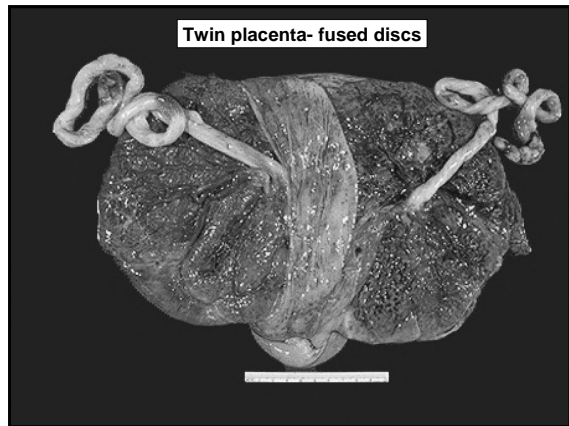
**COMPLETE = Diploid
2 Pat, 0 Mat.**

**PARTIAL = Triploid
2 Pat, 1 Mat**

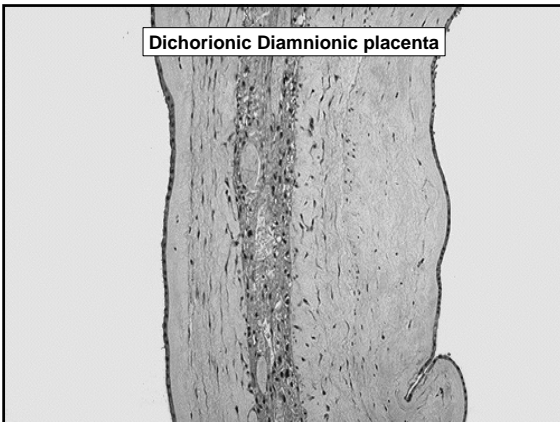
MULTIPLE GESTATIONS



Twin placenta- fused discs



Dichorionic Diamniotic placenta



Monochorionic Diamniotic placenta

