

Community Pediatrics

NewYork-Presbyterian
Ambulatory Care Network/
Columbia University Medical Center
Department of Pediatrics



COLUMBIA UNIVERSITY
Department of Pediatrics

 **NewYork-Presbyterian**
Ambulatory Care Network

Mission

To improve the health and well being of children and adolescents in the communities of Northern Manhattan through the interlinking contexts of biology, family, and community .

- Partnerships between community and academic organizations
- Innovative pediatric training experiences,
- Population health initiatives
- Scholarship
- Research

What is community pediatrics?

- *A perspective* that enlarges the focus from one child to all children in the community
- *A recognition* that family, education, social, cultural , spiritual, economic, environmental, and political forces act favorably or unfavorably, but always significantly, on the health of children

What is community pediatrics?

- A *synthesis* of clinical practice and public health principles directed toward providing health care to a given child, and promoting the health of all children within the context of the family, school, and community

What is community pediatrics?

- *A commitment* to using community resources to achieve optimal accessibility, appropriateness, and quality of services for all children, and to advocate especially for those who lack access to care

What is community pediatrics?

- *An integral* part of the professional role and duty of the pediatrician

A story to explain it

- *“...A man stood on the bank of a river and saw a little girl floating by. Immediately, he leaned down and pulled her out, only to look up and see a small boy floating toward him. He pulled the boy out, and, with horror, saw several more children and babies struggling in the water toward him. Over and over again, he leaned down, and saved the children from the hungry river.”*

Our story continues ...

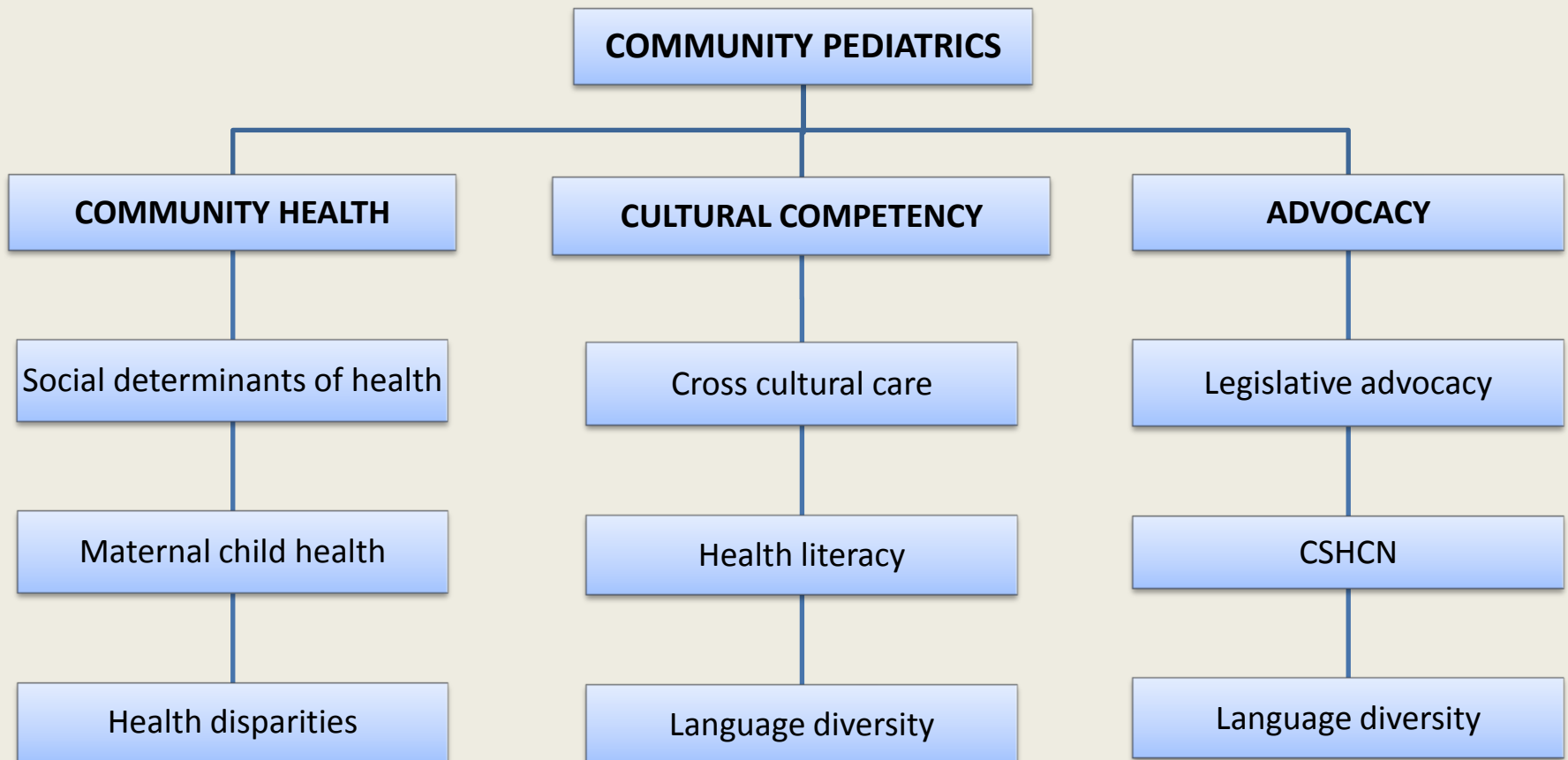
- *“At long last, the man had a chance to walk up river and discovered why the children were falling into the water. He fixed that problem; the children were then safe, and the man smiled...”*

Community Pediatrics Training

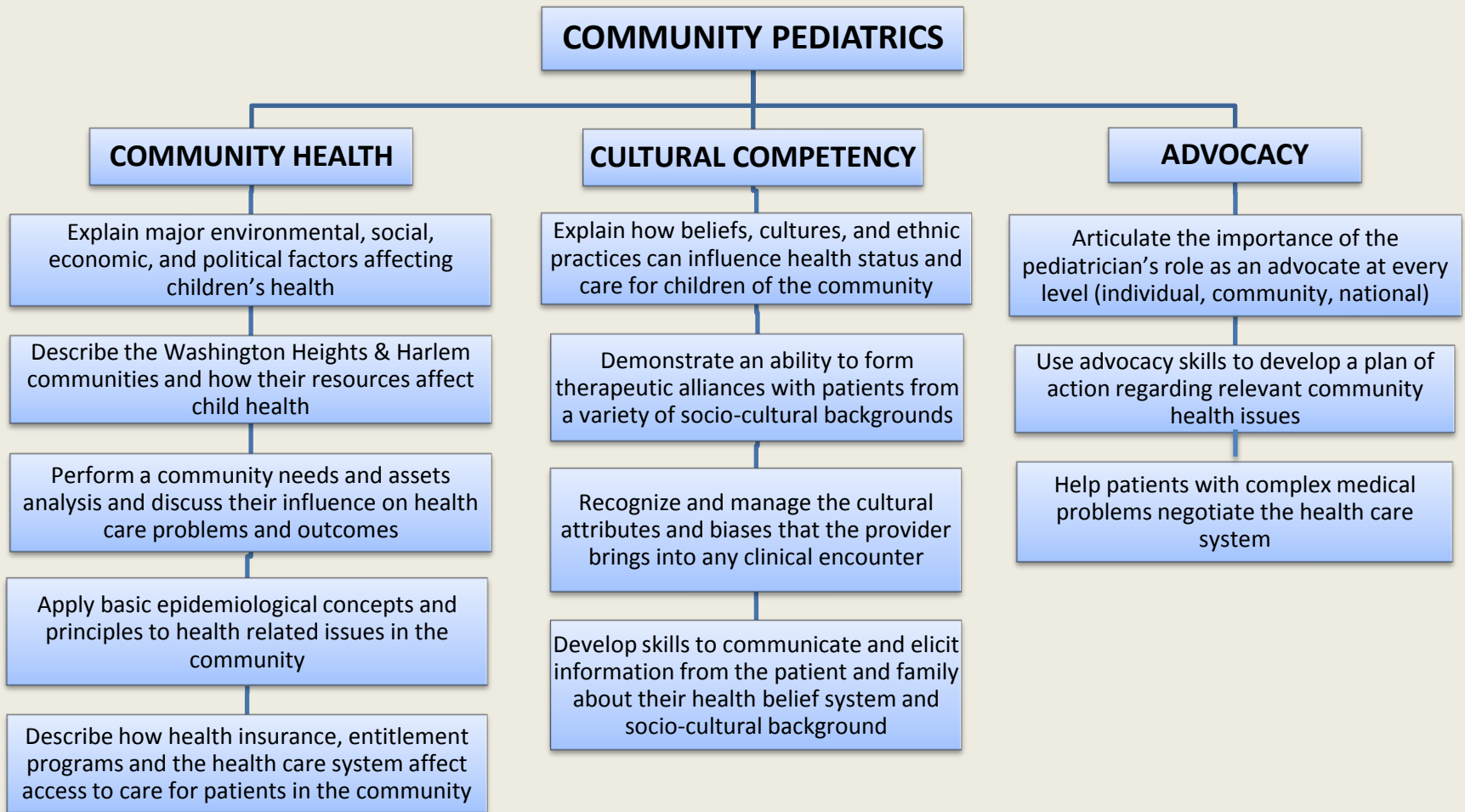
Overall curricular goal:

Trainees will be able to relate to, advocate for, and remain committed to the community and the children for whom they provide care.

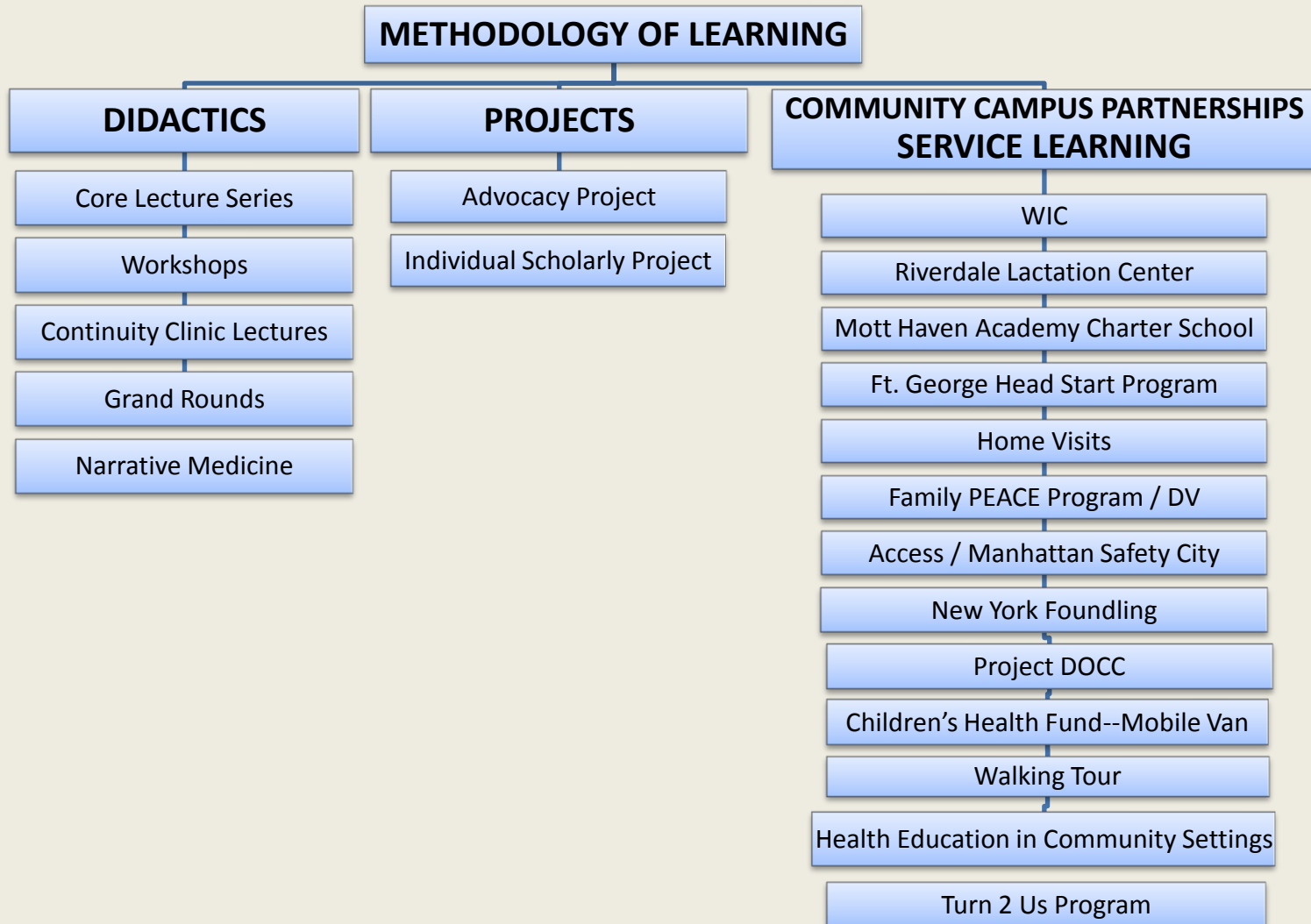
Community Pediatrics Training Curriculum



Community Pediatrics Training Competencies



Community Pediatrics



What Service-Learning Is

- A structured learning experience that combines community service with explicit learning objectives, preparation, and reflection.
- Residents engaged in this not only provide direct service but are expected to learn about the context in which the service is provided, the connection between the service and their academic coursework, and their role as citizens.

How does service-learning differ from traditional clinical education?

- Balance between service and learning objectives
- Emphasis on reciprocal learning
- Emphasis on developing citizenship skills and achieving social change
- Emphasis on reflective practice
- Emphasis on addressing community-identified needs and the integral involvement of community partners

What Service-Learning Is Not

- It is NOT required volunteerism
- The learning that occurs through volunteering is not structured and may be quite accidental
- Importance of the reflective component of service-learning

Why Service-Learning

- Importance of switching the focus of education and research from the campus into the community
- We have often overlooked the potential for the community to meaningfully contribute to resident education, research, and the development of knowledge.
- The creation of community-campus partnerships to address this

Potential outcomes of service-learning

- Can benefit all stakeholders:
 - *Prepare residents for their roles as health professionals and citizens*
 - *Change the way faculty teach*
 - *Change the way health professions institutions relate to their communities*
 - *Enable community organizations and members to play significant roles in how health professionals are educated*
 - *Enhance community capacity*

Community Pediatrics Health Initiatives

Partnership between the Department of Pediatrics at Columbia University Medical Center, the Ambulatory Care Network at New York Presbyterian Hospital, and the community of Northern Manhattan

All our initiatives follow a set of principles that inform their implementation:

- true partnership model
- public health vision
- cultural competency
- ecological approach to health
- link to existing coalitions in the community

Community Health Initiatives

Obesity Prevention:

- **CHALK (Choosing Healthy & Active Lifestyles for Kids):** community based obesity prevention program targeting school-aged children and their families in Northern Manhattan. CHALK utilizes a social marketing campaign to disseminate healthy habit messages in schools, community and clinical practices.

Mental Health:

- **Turn2 Us** is a school-based mental health promotion & prevention program in Northern Manhattan. It targets at risk children and engages them in arts and sports in order to improve academic achievement and classroom behavior. Through a holistic approach and an array of intervention services Turn2 strives to foster social, emotional, and physical well being among students, caregivers, and staff.

Community Health Programs

Chronic Illness:

- **WIN (Washington Heights & Inwood Network) for Asthma Program** is a community-based intervention to reduce the burden of asthma for children and families in Northern Manhattan. It works with community health workers to help families address the needs that these children face.

Medical Pipeline Programs:

- **Lang Youth Medical Program** prepares middle and high school students from the Washington Heights & Inwood communities for careers in biomedical science and medicine.

Community Health Programs

Literacy:

- **HEAL (Health Education & Adult Literacy) Program** aims to improve the health literacy of the population served by developing culturally responsive health education materials using the basic tenets of health literacy. In addition, the program trains pediatric providers, community workers, and volunteers to address this issue.
- **ROR (Reach Out and Read Program)** is a national program that incorporates early literacy into pediatric primary care for children ages 6 months to 5 years. Our program, established in 1997, has enabled over 300 pediatricians at CUMC to “prescribe” and give out over 185,000 culturally sensitive and age appropriate books with anticipatory guidance to 90,000 economically disadvantaged children, many of who are from linguistically isolated families.

Community Health Programs

Resource Needs:

- **HEALTH LEADS** is a national program that works to break the link between poverty and poor health by mobilizing undergraduate volunteers in partnership with urban medical centers, universities, and community organizations. Volunteers address patients' unmet resource needs systematically, as a standard element of patient care.