

Adolescent Reproductive Health

Adolescent Reproductive Health, USA

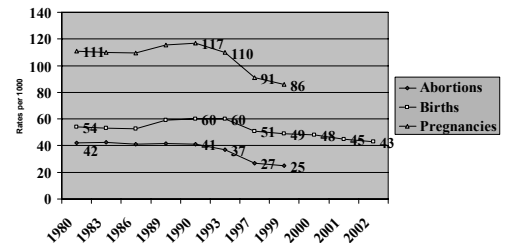
- 870,000 teens became pregnant in 1997
- Just under 500,000 births
- 75-80% teen moms unmarried
- 85% “unintended”



News Flash: Good News . . .

- Lower pregnancy, birth, abortion rates
- Prevalence of most STIs decreased
- Proportion sexually experienced decreased in 1990s (67% in 1991 vs. 61% in 2001)
- Condom use increasing (46% at last intercourse in 1991 vs. 58% in 2001)
- Other contraceptive use mixed between 1988-1995 (more at first intercourse; less at most recent)
- 20-30% sexually active youth not protected from unintended pregnancy at most recent intercourse

Trends in Pregnancy, Birth and Abortion Rates Among Females Ages 15-19, 1980-1997

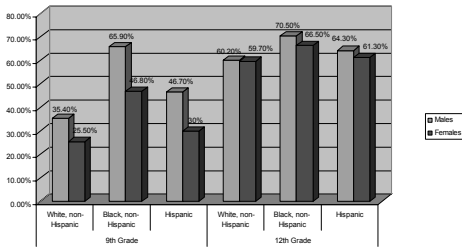


As with births to adult women, there has been a sharp increase in the proportion of births to teens outside of marriage

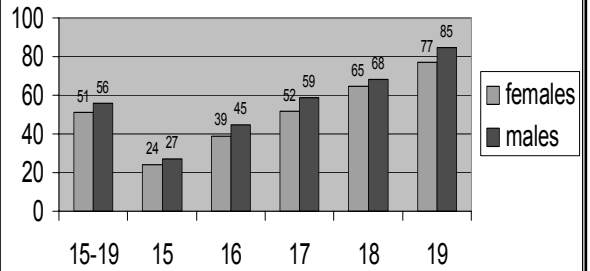
Proportion of births to unmarried women (all ages)

- 4% in 1940
- 10% in 1970
- 17% in 1990
- 33% in 1999

Sexual Intercourse Experience by Race/Ethnicity, Gender and Grade Level, 2001(YRBS)



**Sexual Activity, U.S. teens 15-19
1995, NSFG & NSAM**



Sexually Active?

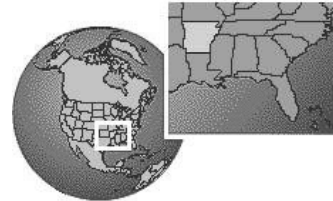
- 47% of >2,000 h.s. students were “virgins”
 - Of these:
 - About 30% heterosexual masturbation of/by a partner in past year
 - About 10% oral sex
 - 1% anal sex
- (Schuster et al. 1996)



STIs

3-4 million teens contract one or more STI's annually.

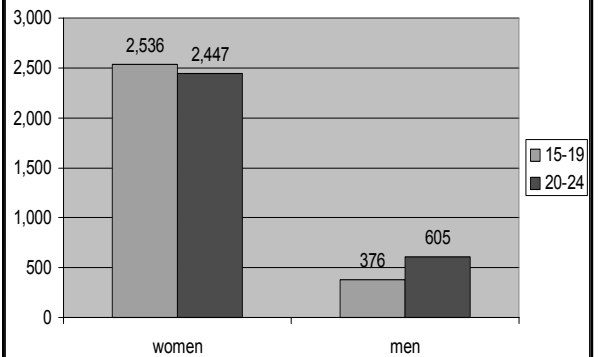
(That's more than the entire population in Arkansas)



Harlem Health Promotion Center/Center for Community Health and Education

Chlamydia rates rose from 51 to 278 per 100,000 U.S. population, 1987-2001

Chlamydia rates per 100,000, 2001



Highest Risk:

- 18% street youth (CDC, STD Surveillance 2001)
- 15% young women in juvenile detention centers (CDC, STD Surveillance 2001)
- 50% 18-21 year olds in high drug sale/use community infected with HSV-2 (Friedman, 1997)
- African American youth
 - Chlamydia rate 7x higher among 15-19 year old women
 - HPV type 16 prevalence among women: African American (27%), white (17%), Hispanic (12%)