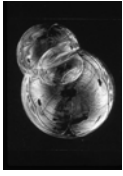
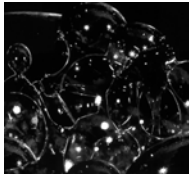


## The Concept Of Niche\*



The Three Body Problem



The N<sup>th</sup> Body Problem

"No two species can occupy the same niche."



\* as developed by G. Evelyn Hutchinson

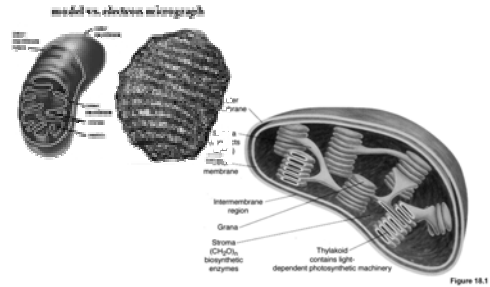
## SPATIAL CONCEPT OF NICHE

- G.E. HUTCHINSON (1957), A YALE SCHOLAR: "THE NICHE IS AN ABSTRACTLY INHABITED HYPERVOLUME"
- CONCEPT OF DIMENSIONALITY OF CONTROL FACTORS
- FUNDAMENTAL VS. REALIZED NICHE

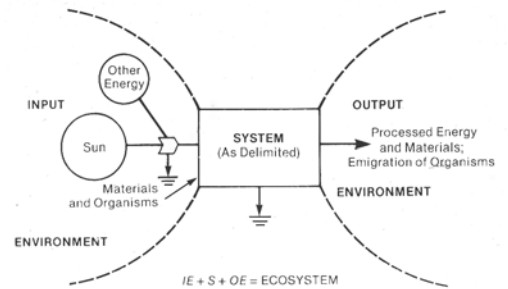
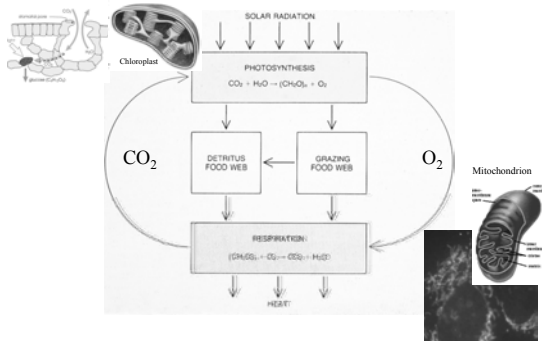
Copyright R. E. Bailey 1998

There Can Be No Ecosystems Without Plant-Animal Interactions

## It Takes Two To Tango



## General Scheme For Most Life On Earth



from Odum, *Fundamentals of Ecology* Saunders Publ. 1971

