



NATURAL RESOURCES DEFENSE COUNCIL

SEARCH

Go

DONATE AND HELP SAVE THE PLANET

TAKE ACTION

SUBSCRIBE

Health & the Environment
Health Effects of Air & Water Pollution

EMAIL THIS ARTICLE

● **Health & the Environment**

- Kids' Health
- Health Effects of Pollution

In Brief

In Depth

Related Links

- Chemicals at Home, School & Work
- Food, Farming & Pesticides
- Science & Public Policy

Environment & Health: Health Effects of Pollution: In Depth: Analysis

New Orleans Environmental Quality Test Results

[Contents page](#)

Sampling Results: Metairie

Results for: [Mold](#) | [Endotoxin](#) | [Particulates](#)

- Clean Air & Energy
- Global Warming
- Clean Water & Oceans
- Wildlife & Fish
- Parks, Forests & Wildlands
- Health & the Environment
- Nuclear Weapons, Waste & Energy
- Cities & Green Living
- U.S. Law & Policy
- International Issues

En Español



MOLD

We collected two outdoor samples for mold in Metairie. These samples were collected in areas that were not affected by flooding and were used as comparison samples.

10/18/05

Elmere near Highway 10 (outdoor, not flooded)
 25,000 spores/m³ (daily estimated average based on 6 hours of continuous volumetric sampling)
 41% *Cladosporium*
 41% *Aspergillus/Penicillium*

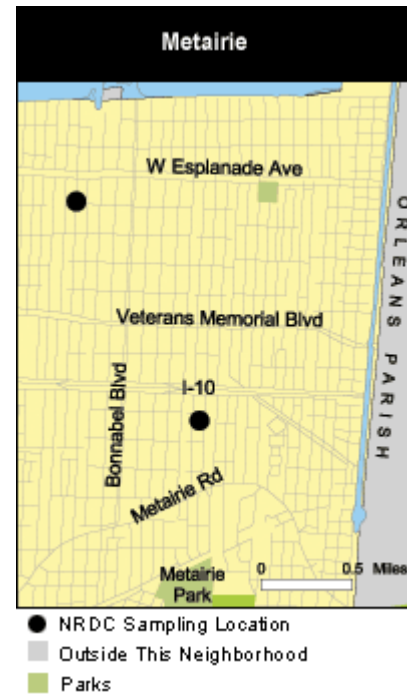
11/13/05

Melody near Veteran's Blvd (outdoor, not flooded)
 21,000 spores/m³ (daily estimated average based on 24 hours of continuous volumetric sampling)
 69% *Cladosporium*
 8% *Aspergillus/Penicillium*
 5% *Ascomycetes*

Note: According to the National Allergy Bureau, outdoor air mold counts between 13,000 and 49,999 spores per cubic meter (spores/m³) are "High." *Cladosporium* and *Aspergillus/Penicillium* are known to cause health effects in humans, including respiratory disease.

ENDOTOXIN

SAMPLING LOCATIONS



Maps on these pages show NRDC sample locations for mold, sediment and endotoxin. NRDC particulate samples were taken at multiple locations. Results of sediment sampling by the EPA and others are summarized on these pages but locations are not marked on the maps. [SEE AREA MAP](#)

[More features](#)

We collected one outdoor sample for endotoxin in Metairie.

[Publications](#)

Elmere near I-10
5.0 EU/m3

[Media Center](#)

[Reference/Links](#)

Note: Normal background levels of endotoxin reported in many areas of the country are below 1 EU/m3. Levels above 10-28 EU/m3 may be associated with long-term declines in lung function after chronic exposure. Levels of 45 EU/m3 have been associated with decreases in lung function after exposures as short as one day.

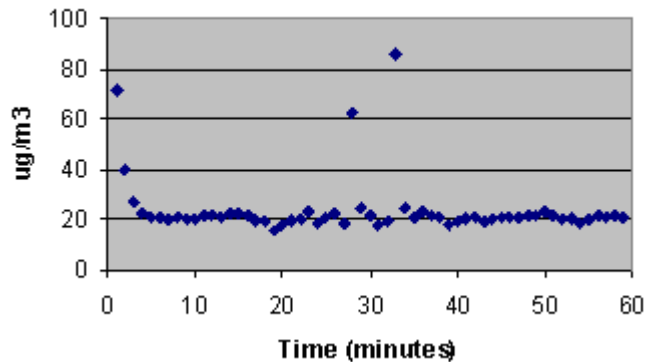
PARTICULATE POLLUTION

NRDC sampled for particulate matter for about an hour on November 15, 2005, in Metairie, Jefferson Parish. The weather was clear with very little wind, and there was no visible haze. There was heavy vehicle traffic, including quite a few diesel trucks. The area had not been flooded, and there was no sediment or building debris. The air quality was very good during the time we sampled. The levels peaked at concentrations over 50 ug/m3 in heavy traffic conditions.

Monitoring Results

	11/15/05
Average (overall)	24 ug/m3
Minimum	16 ug/m3
Maximum	86 ug/m3

Metairie PM 10, November 15, 2005



[Back to contents page](#)

[Home](#) | [About Us](#) | [Contact Us](#) | [Multimedia](#) | [Privacy Policy](#) | [Site Map](#)

© Natural Resources Defense Council