

GIF File Size Comparison

Due to the way the GIF algorithm reduces file sizes, different images will yield different savings in file size. Here are some examples:



A1: 941 bytes



A2: 1,000 bytes



A3: 1,001 bytes



A4: 1,004 bytes



A5: 1,002 bytes



A6: 1,033 bytes



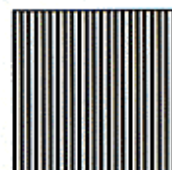
B1: 941 bytes



B2: 1,102 bytes



B3: 1,238 bytes



B4: 1,147 bytes



B5: 1,186 bytes



B6: 1,452 bytes



C1: 1,239 bytes



C2: 1,891 bytes



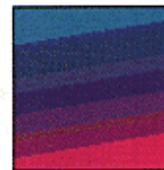
C3: 1,520 bytes



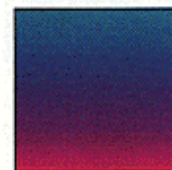
C4: 1,568 bytes



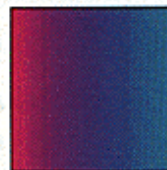
D1: 1,248 bytes



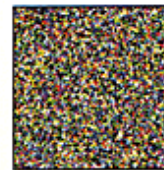
D2: 1,402 bytes



E1: 1,803 bytes



E2: 2,243 bytes



F1: 6,685 bytes

All images are 8-bit, 90 × 90 pixels (8,100 bytes). Longer horizontal runs result in better compression. Note GIF's ability to recognize patterns.