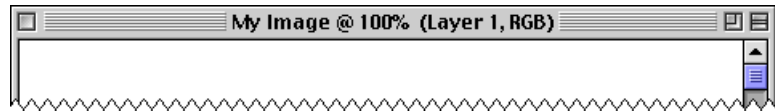


Indexing an Image to an 8-Bit Palette

Open Adobe Photoshop

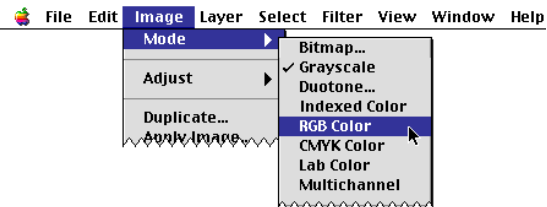


Open the image. Once opened, the letters "RGB" should appear in the Title Bar.



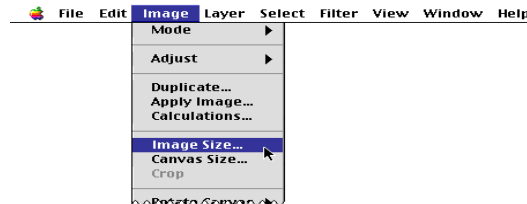
Example: "My Image @ 100% (Layer 1, RGB)"

If the image does NOT have the letters "RGB" in the title bar, then the image may have been saved in a grayscale or other format. If so, first convert the image to "RGB Color" before continuing.

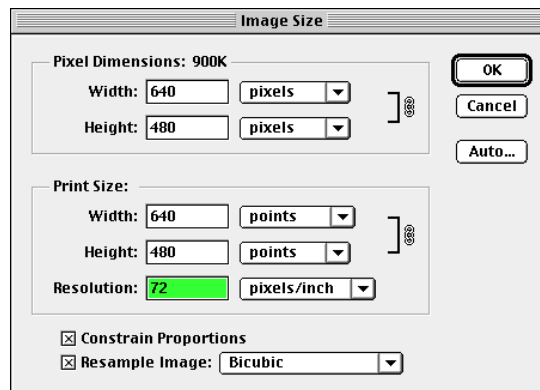


To do the conversion, select "Mode" and the submenu item "Indexed color..." from the "Image" menu.

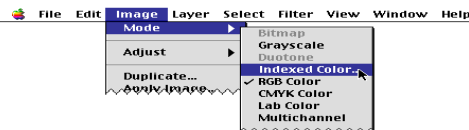
After editing and applying any filter effects to the image, make sure that the image is in the appropriate resolution. To check a file's resolution, select "Image Size..." from the "Image" pull down menu.



The window that appears will display width and height information for the image as well as the resolution information. If the resolution number is not 72, change it to 72. Then press the "OK" button.

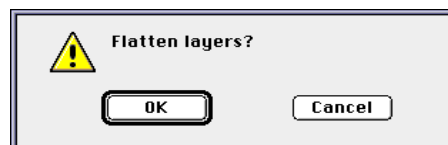


Under the "Image" pull down menu, select "Mode" and the submenu item "Indexed color..."



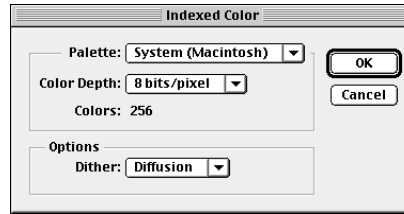
NOTE: a check mark (✓) should now appear next to the line "RGB Color".

If a dialog box asks if layers should be flattened, select "OK."



The "Indexed Color" window will open.

There are a few palette options here, and it helps to know who your target audience is to select the correct palette. For the purposes of class projects, select the "System (Macintosh)" palette.

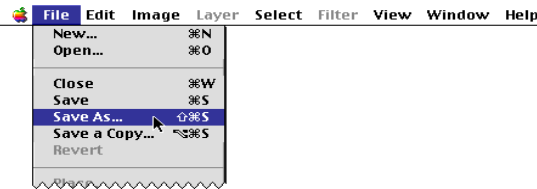


NOTE: If your project needs to be presented on a PC running Windows, or on both a Mac and Windows machine, it's better to choose the "System (Windows)" palette. If your project is being developed for the Web, and playback may or may not be needed for a Mac or a Windows machine, a "Web" palette would work best.

Set the "Color Depth" to "8 bits/pixel" and the "Dither" option to "Diffusion". When finished, click the "OK" button.

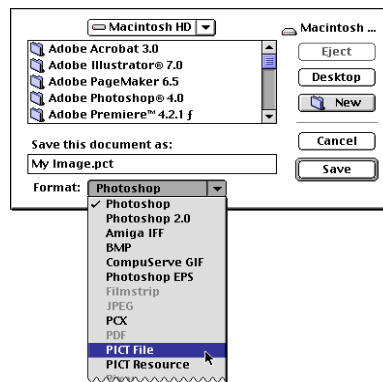
A dithered 8-bit image has just been created. In order to use this image in Director, this image should be saved as a PICT format file. (Director can also import TIFF, GIF, JPEG, BMP, and PNG formats.)

From the menu bar, select "FILE" and drag down to "Save As..."



A dialog box will appear. Click the "Format" pop-up menu and drag down to "PICT file".

It's often a good idea to add ".PICT" or ".PCT" after the file name so that you don't overwrite your original Photoshop file saved in an RGB format. This way it's also clear that this graphic is ready for importing. Photoshop will usually add the appropriate extension automatically.



Click the "Save" button to save the image.

The indexed image has now been saved in a PICT format. It's now ready to import into Director. If development is occurring on a Macintosh and a palette other than the Macintosh OS palette is associated with this graphic, make sure that Director is using the correct palette in the palette channel of the score. (More on palettes in Director later.)