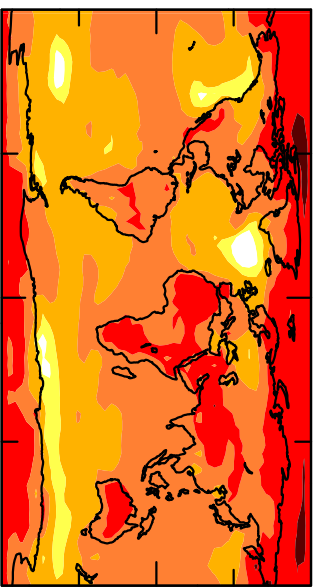


Annual Mean Surface Air Temperature Change (°C)

AIB

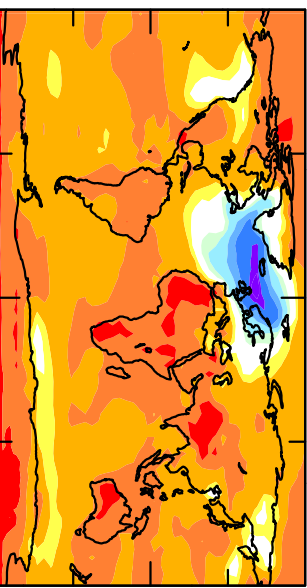
(a) 2065 (SL +0.6 m)

2.24



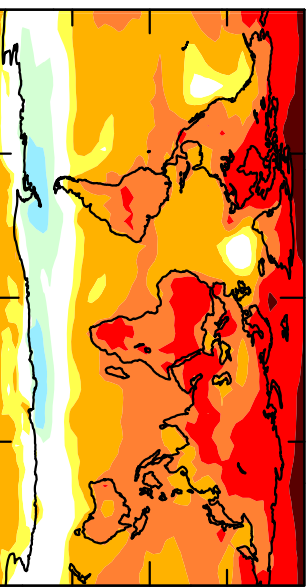
Ice Melt in North Atlantic

1.62



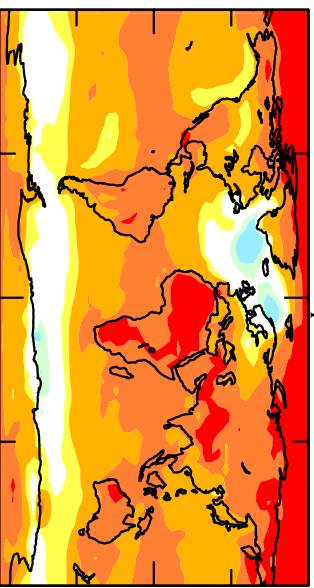
Ice Melt in Southern Ocean

1.79



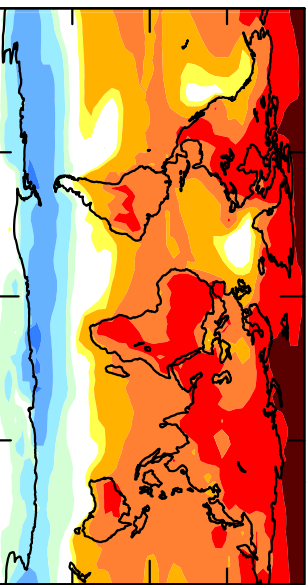
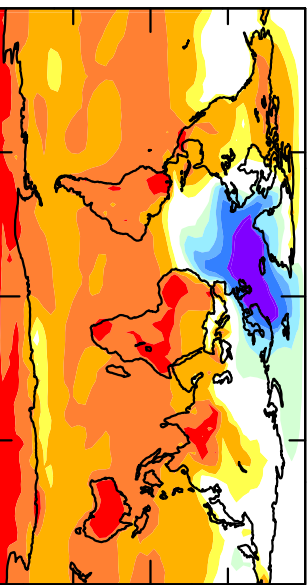
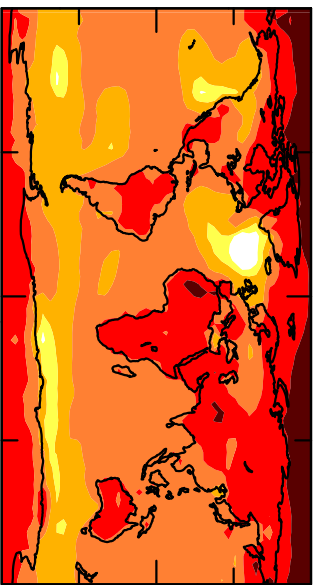
Ice Melt in Both Hemispheres

1.78



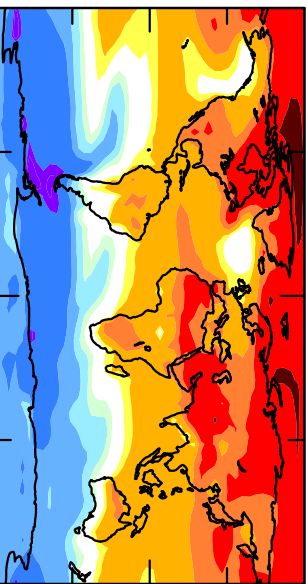
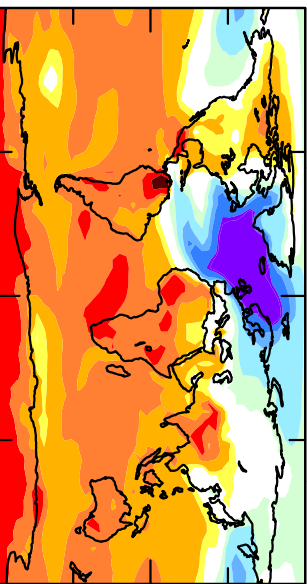
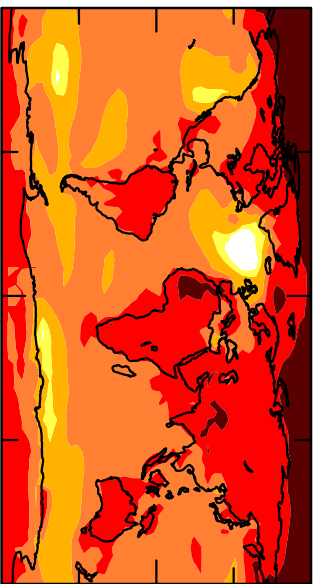
(b) 2080 (SL +1.7 m)

2.58



(c) 2096 (SL +5 m)

2.84



-12 -10 -6 -4 -2 -1 .5 1 2 3 5 6-17 -10 -6 -4 -2 -1 .5 1 2 3 5 6-21 -10 -6 -4 -2 -1 .5 1 2 3 5 7