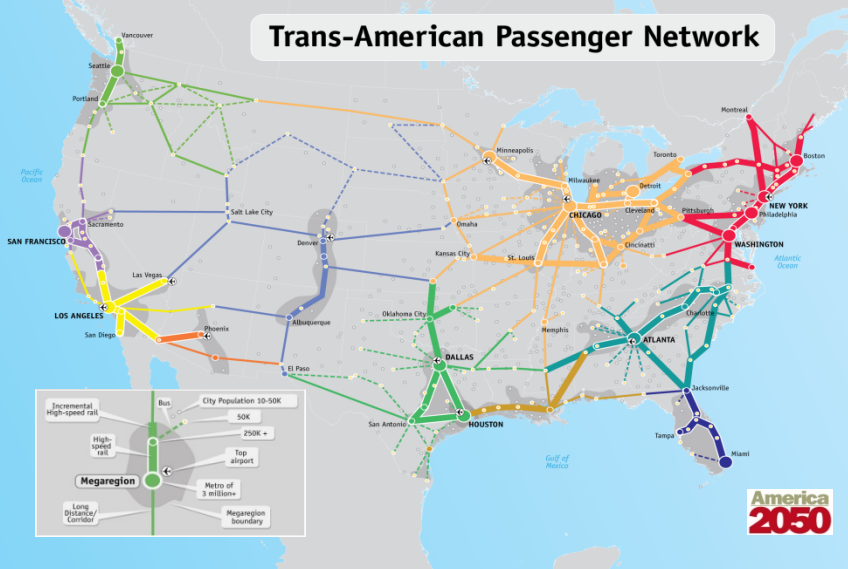


Trans-American Passenger Network



National Infrastructure Planning: Perspectives and Challenges

Petra Todorovich Messick
Director, America 2050
Regional Plan Association

October 17, 2012

EDF - Alliance Executive Workshop 2012

Columbia University



Rapid population growth and demographic change



Growing reliance on foreign trade



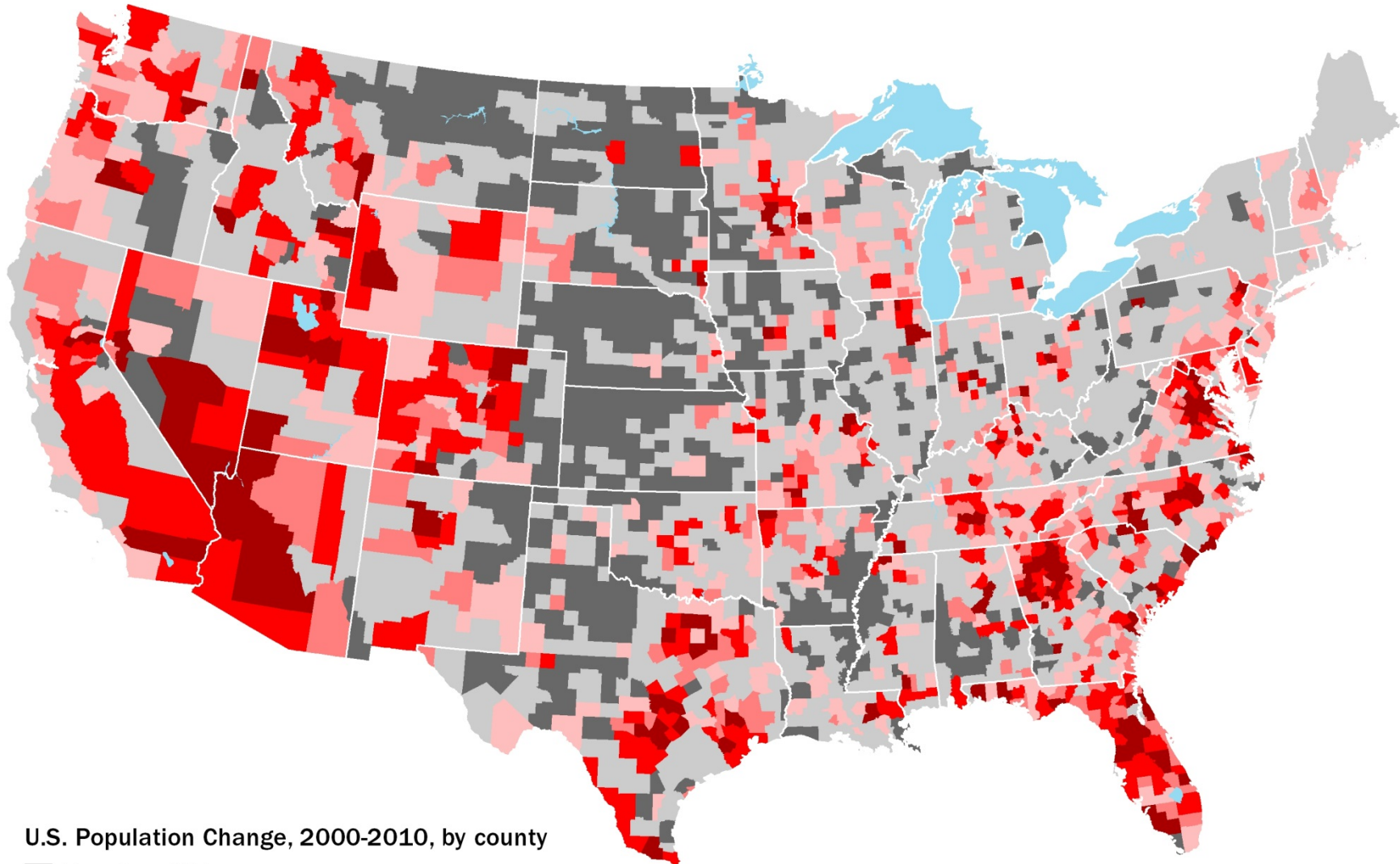
Global climate change and foreign oil dependence



Deep economic recession and loss of opportunity

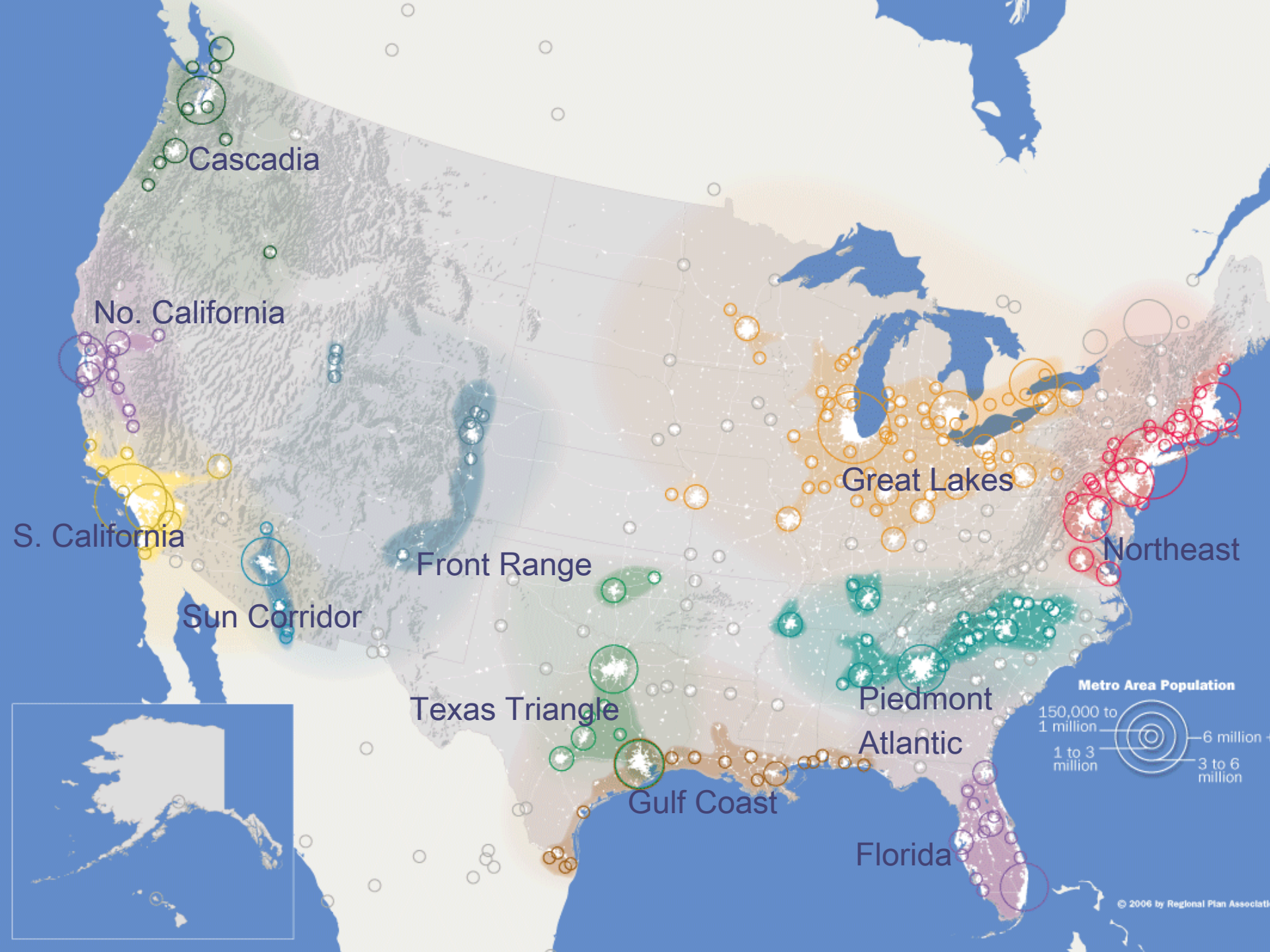
The U.S. population is projected to grow to 420 million by 2050.

Projected Change in Population, United States
1970 – 2010 (Census), 2010 – 2050 (Projected)



U.S. Population Change, 2000-2010, by county

- More than 5% loss
- 4.9% loss to 5% gain
- 5.1 to 10% gain
- 10.1 to 15% gain
- 15.1 to 30% gain
- More than 30% gain



Cascadia

No. California

S. California

Sun Corridor

Front Range

Texas Triangle

Gulf Coast

Great Lakes

Piedmont Atlantic

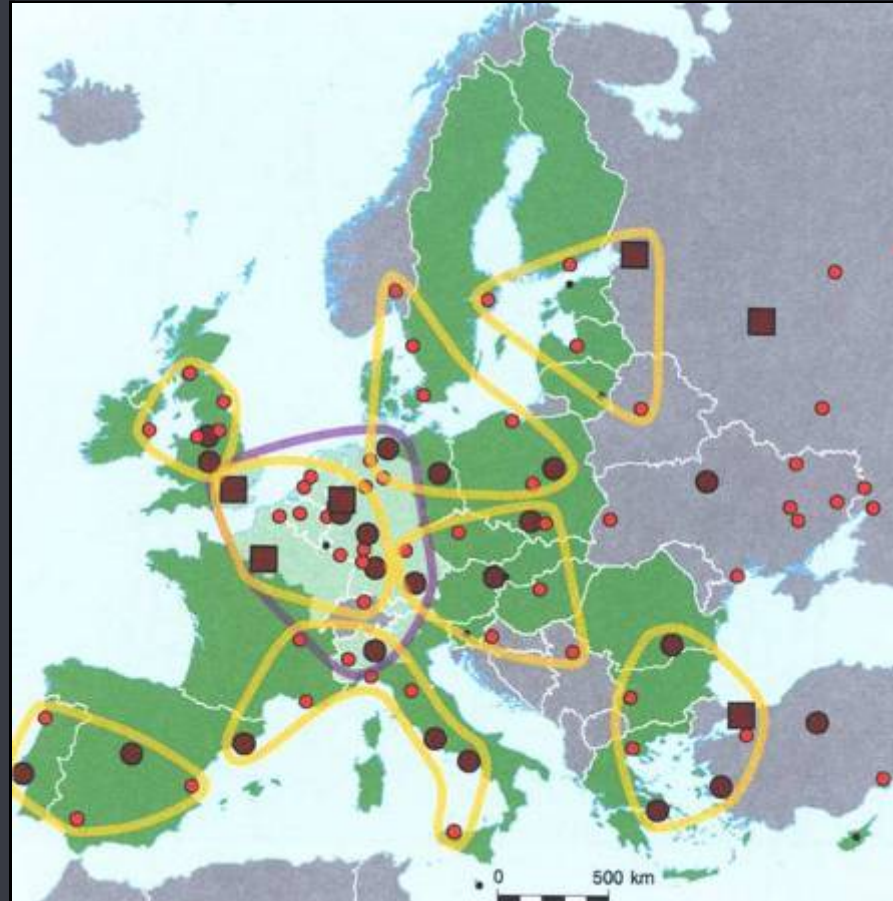
Florida

Northeast

Metro Area Population



Megaregion Thinking in Europe and Asia



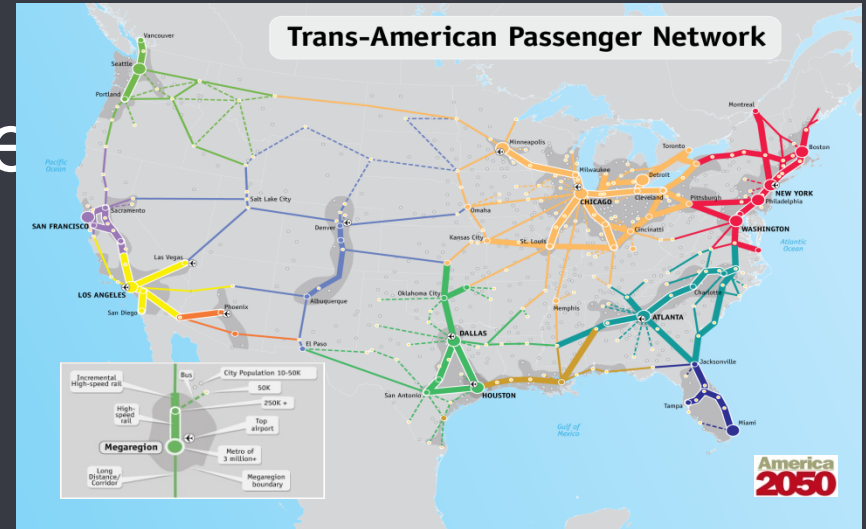
European global integration zones

Chinese Megaregions -- Pearl River Delta

Planning at Every Scale

1. National Infrastructure Vision
2. Megaregion-scale coordination
3. Regional planning
4. State Responsibilities
5. City planning

Top right: Flickr/cbcastro



Megaregion Priorities: Building Blocks of a National Plan



- High-speed rail
- Seaports, airports, and goods movement
- Energy transmission and generation
- Water resource management

2008- 2009 Megaregion Forums to Set Priorities



Washington, May 9, 2008



Chicago, November 17, 2008



Sacramento, Dec 2, 2008



Los Angeles, June 19, 2009

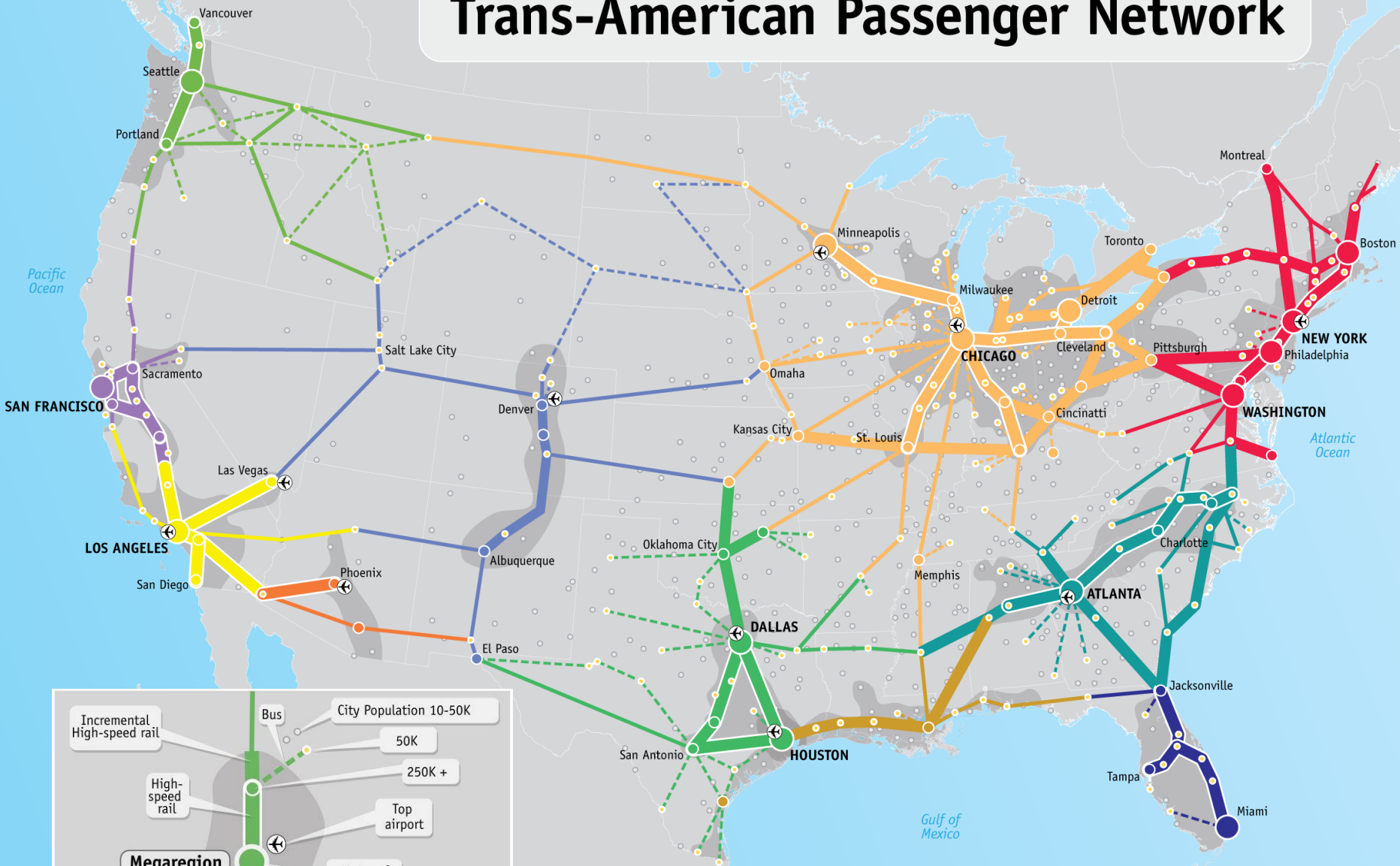


New York, April 17, 2009



Atlanta, March 23, 2009

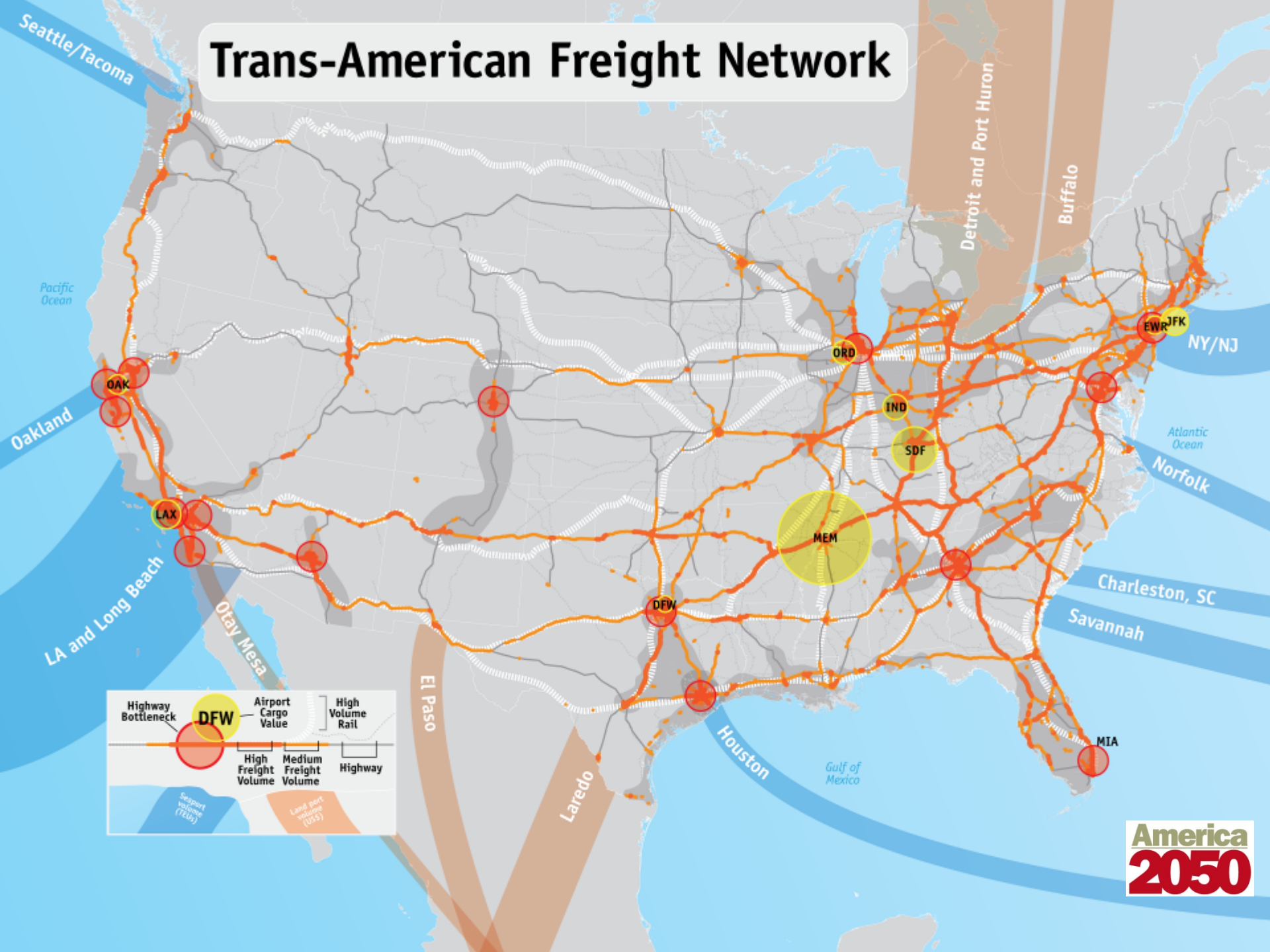
Trans-American Passenger Network



Megaregion

- Incremental High-speed rail
- High-speed rail
- Long Distance/Corridor
- Bus
- City Population 10-50K
- 50K
- 250K +
- Top airport
- Metro of 3 million+
- Megaregion boundary

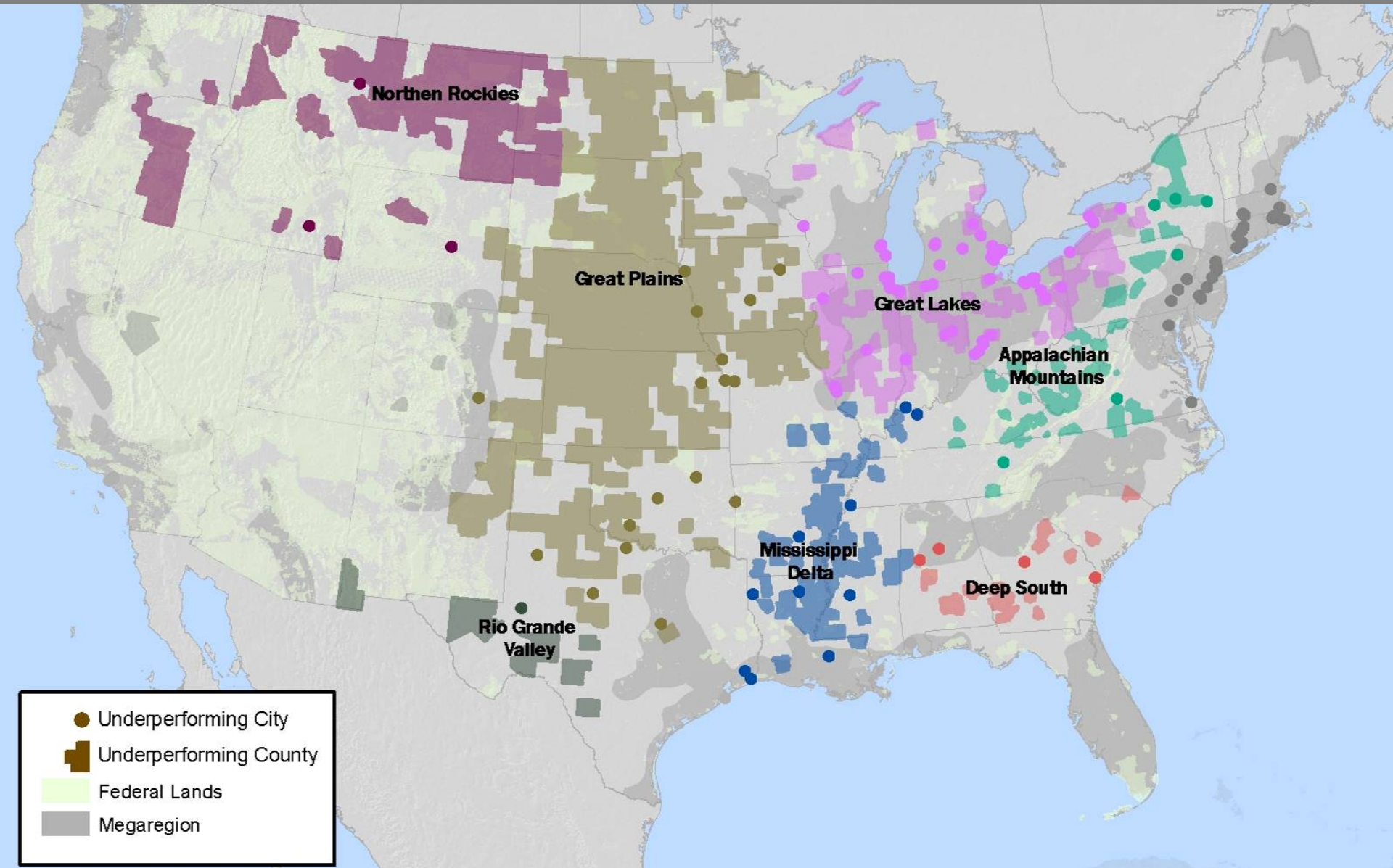
Trans-American Freight Network



DFW

- Highway Bottleneck
- Airport Cargo Value
- High Volume Rail
- High Freight Volume
- Medium Freight Volume
- Highway
- Seaport Volume (TEU)
- Land port volume (US\$)

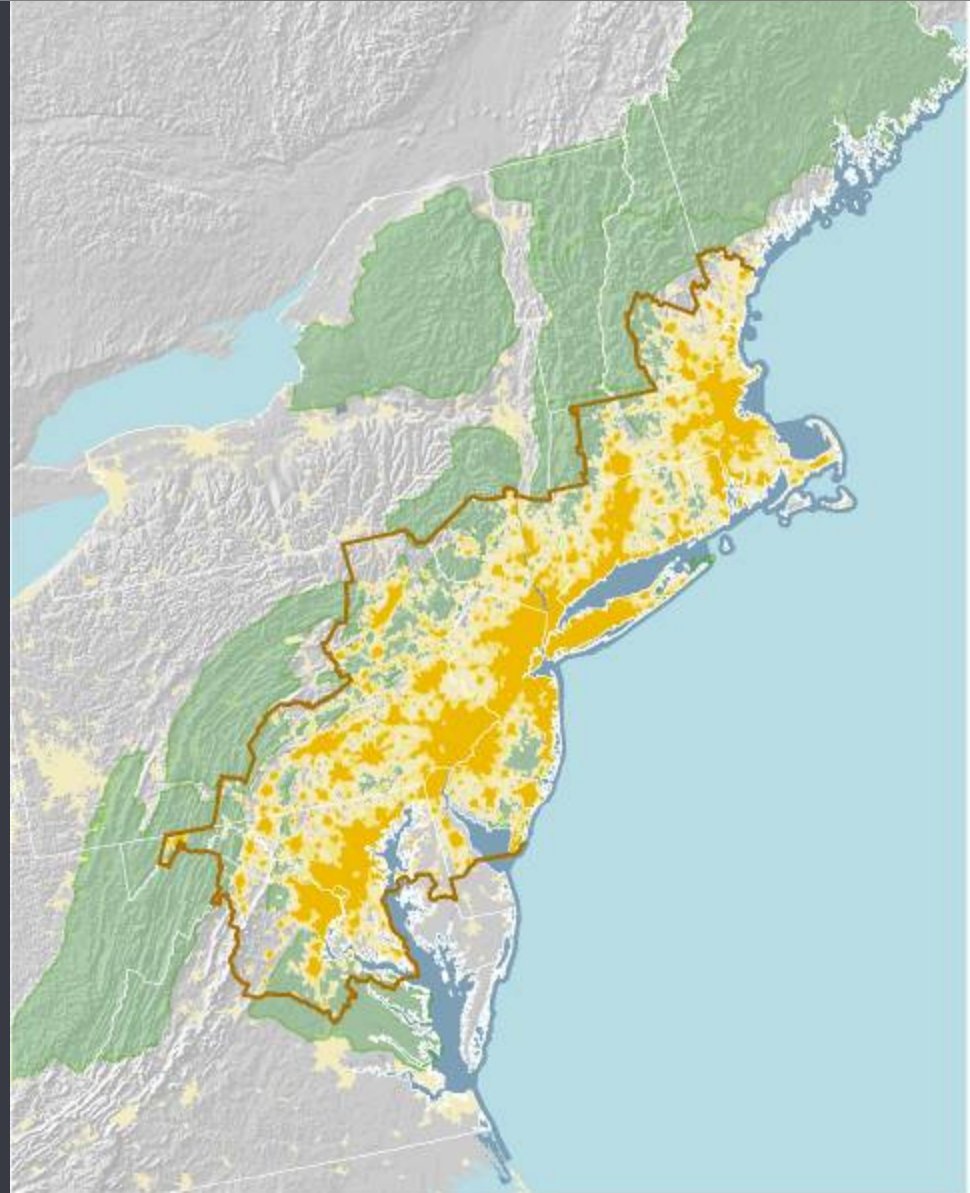
Revitalizing Underperforming Places



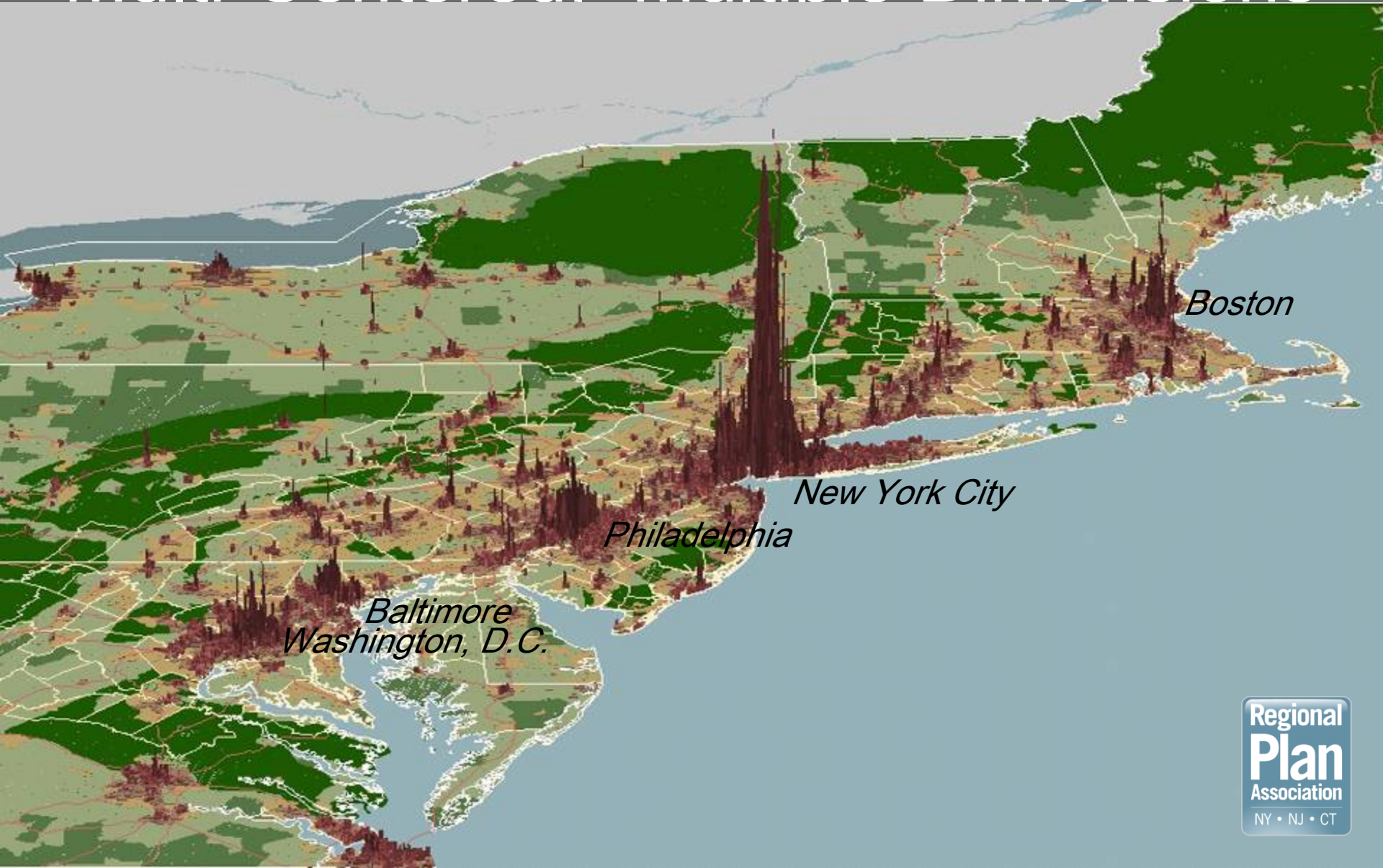
The Northeast Megaregion

- 52 million inhabitants
- 17% of U.S. population on 2% of the land area
- 20% of U.S. GDP

Source: 2010 Census, 2005 BEA Data



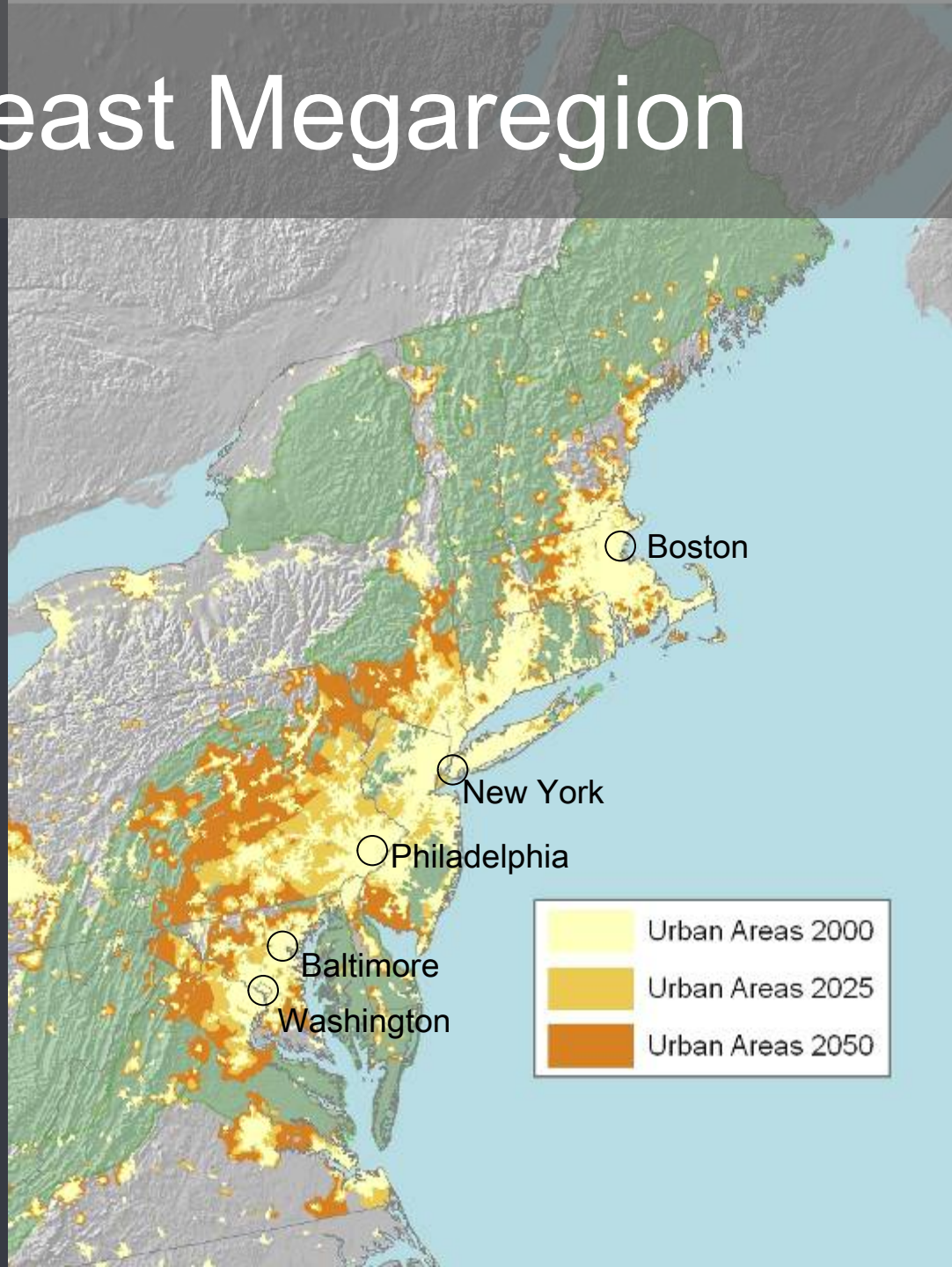
Defining the Megaregion: Multi-Centered, Multiple Dimensions



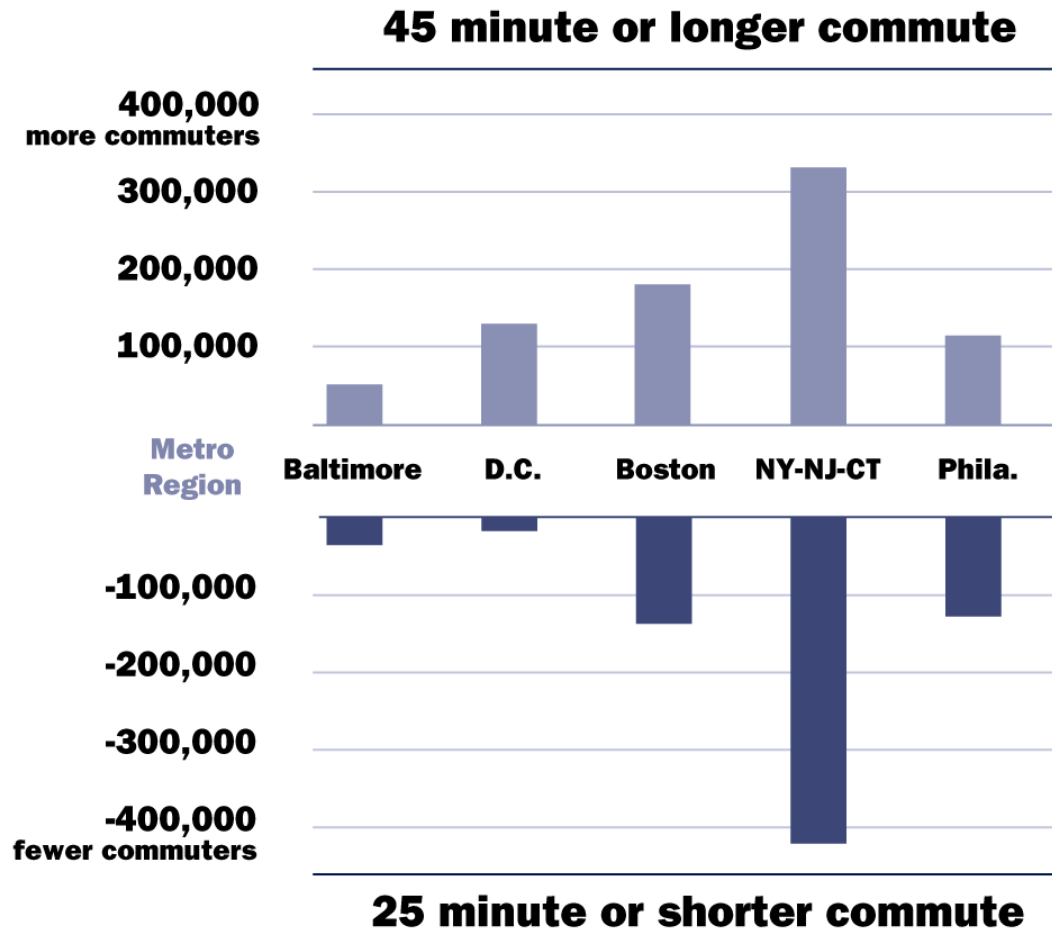
The Northeast Megaregion

Sprawl is causing the megaregion to grow together – but with negative impacts on environment and quality of life.

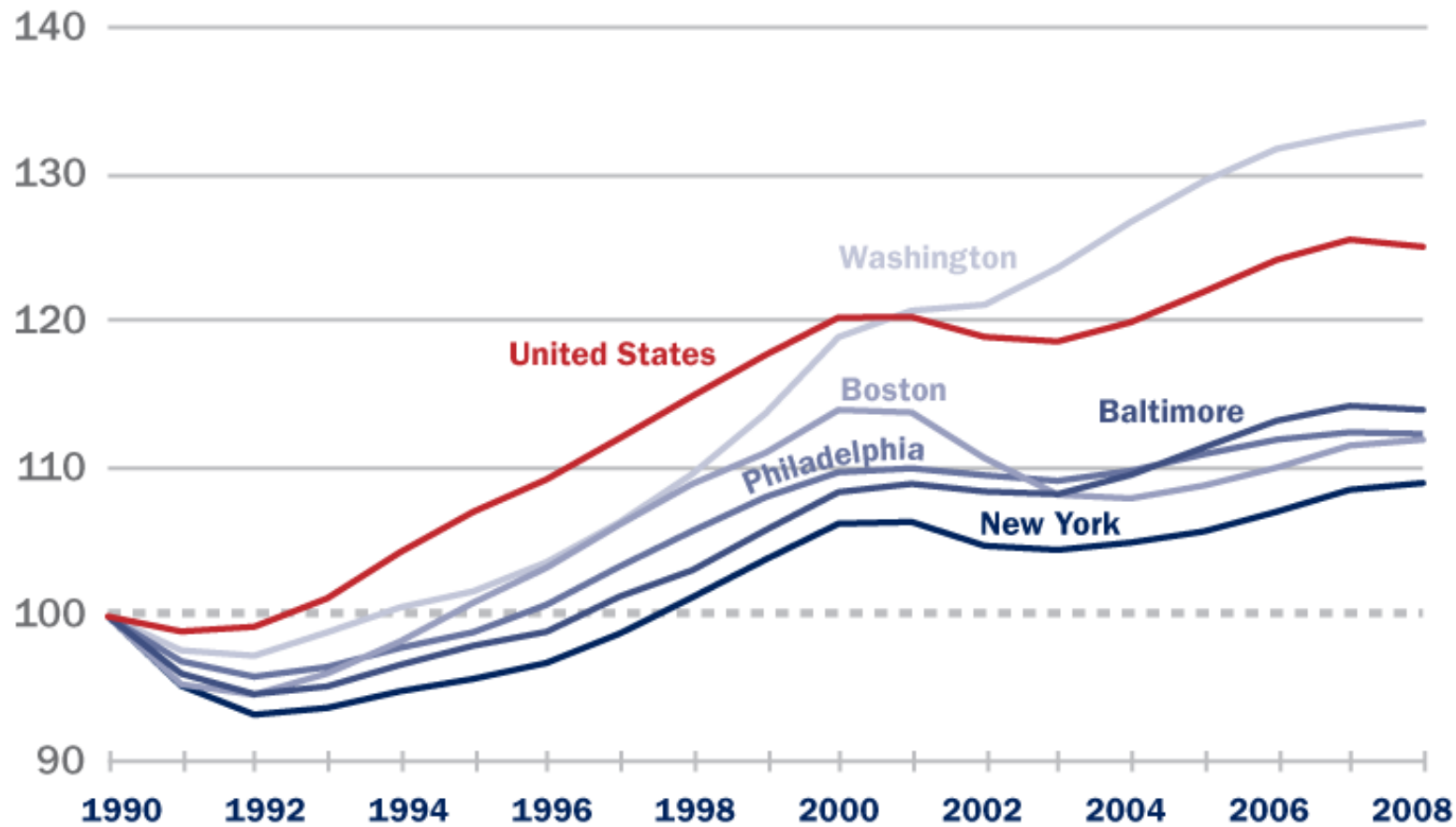
Source: RFA GIS Model,
Woods & Poole County
Population projections



Commutes are Getting Longer, 1990 to 2000



Employment Change Index - Northeast Metros and U.S.

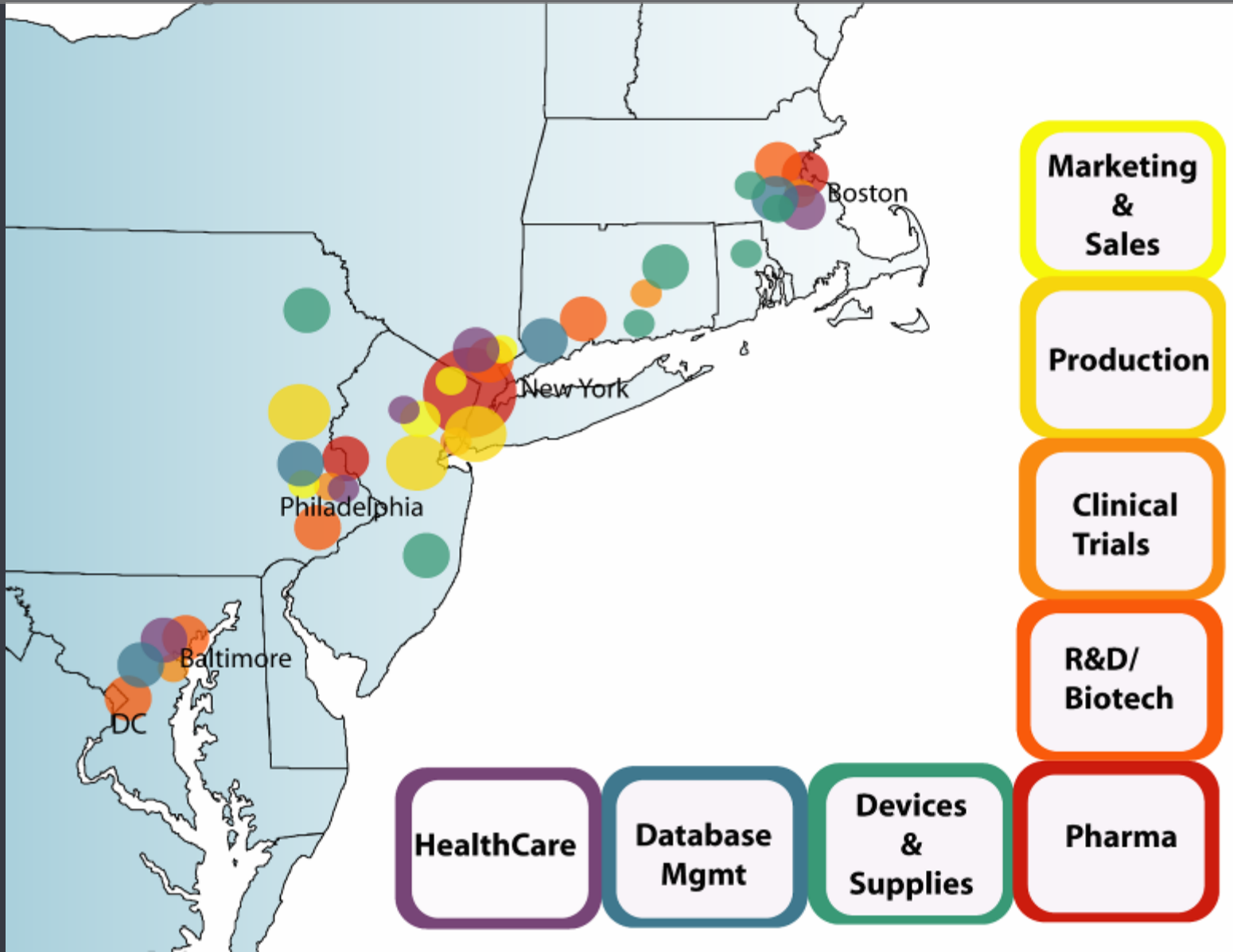


Source: Bureau of Labor Statistics

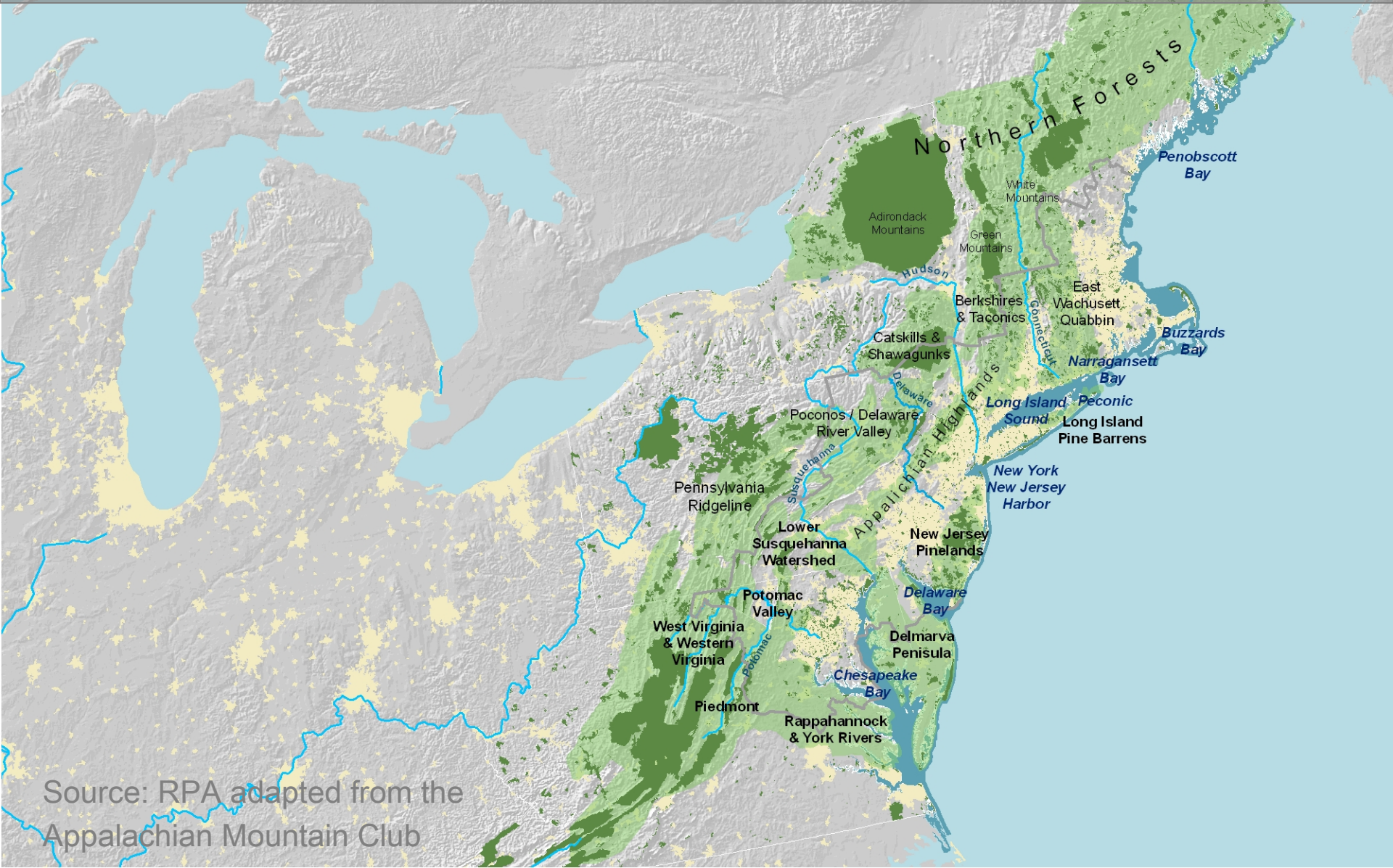
Important Sectors in the Northeast

Metropolis	Most Concentrated Sector	Second Most Concentrated
Baltimore	Education & Health Services	Professional & Business Services
Boston	Education & Health Services	Information
New York	Financial Activities	Information
Philadelphia	Education & Health Services	Financial Activities
Washington	Professional & Business Services	Information

Pharmaceutical Industry Agglomeration



Large Landscapes and Estuaries



Source: RPA adapted from the Appalachian Mountain Club

The Vision



The Northeast Corridor Today

- Amtrak service and 8 commuter railroads operate on 455-mile route
- 260 million annual passengers; 13 million are Amtrak
- \$8.8 billion state of good repair backlog
- Many bridges over 100 years old

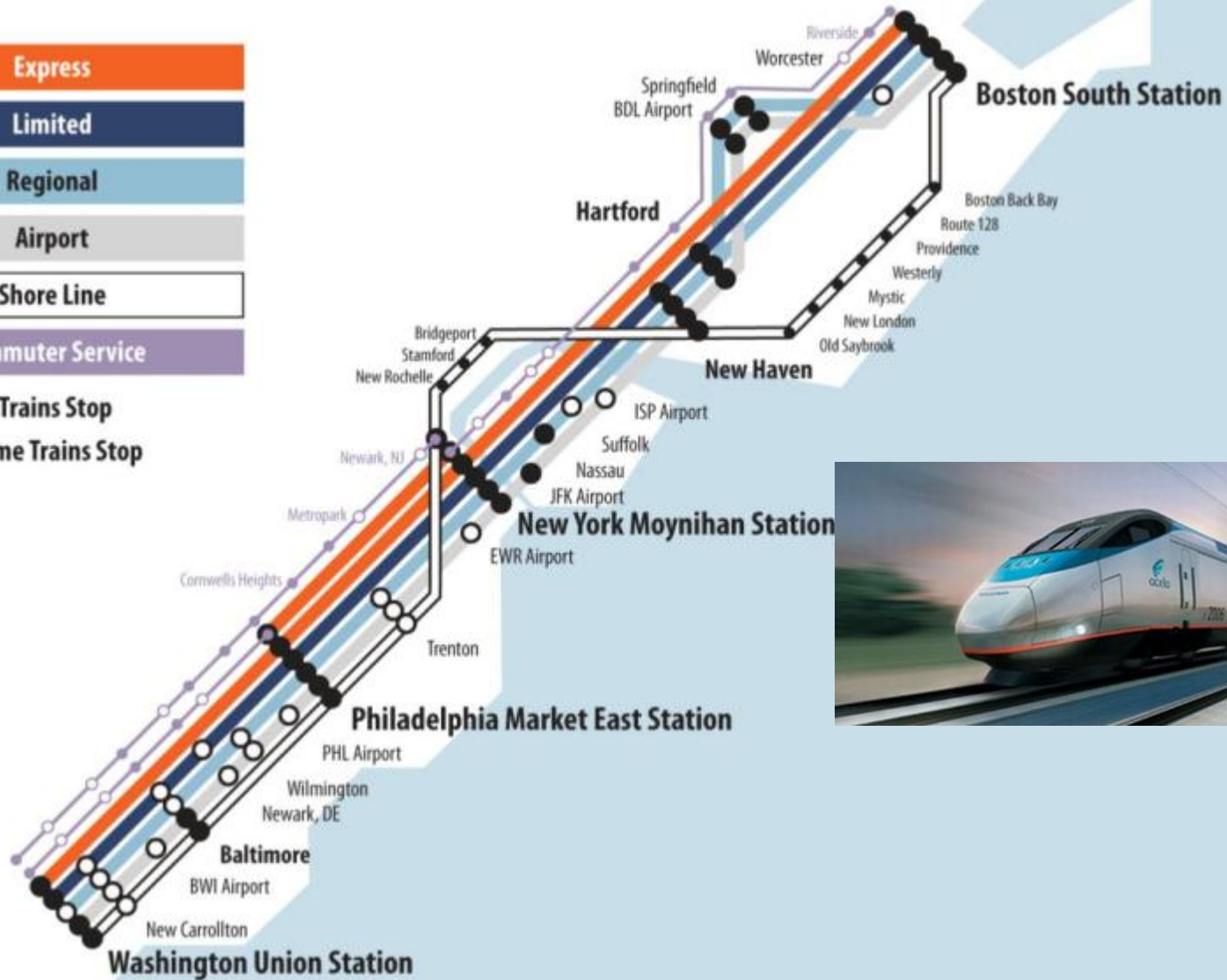


The Susquehanna River Bridge in Maryland was built in 1906.

Next Generation High-Speed Rail



- ● All Trains Stop
- ○ Some Trains Stop



Business Alliance for Northeast Mobility

- Coalition of over 50 businesses and civic groups.
- Advocating for repair of the existing rail infrastructure.
- Advancing a vision of high-speed rail in the Northeast Corridor.



Rally in 2008 for passage of PRIA at Washington Union Station

A New Federal Commitment to High-Speed Rail (?)

- Passage of rail legislation (PRIIA) in 2008
- \$8 billion in Stimulus Bill in 2009
- \$2.5 billion in FY 2010

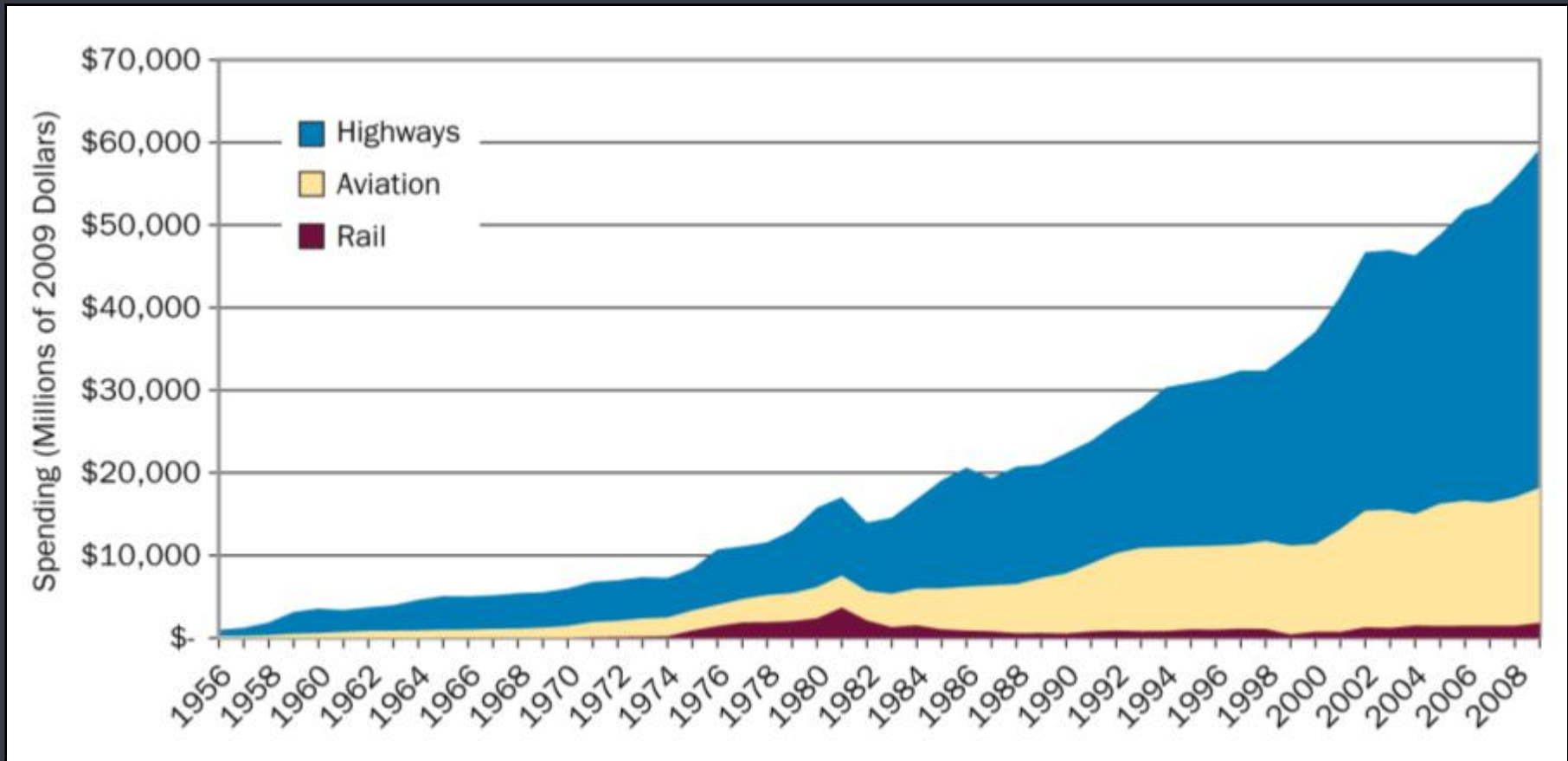


Photo: Tim Birch

A Sharp Increase in Rail Funding

Source: National Association of Railroad
Passengers

Rail Spending Dwarfed by Other Modes



Source: Congressional Budget Office 2010.

Rail Policy Recommendations

- Strengthen the federal planning role and management framework
- Prioritize corridors that meet investment criteria
- Establish new mechanisms



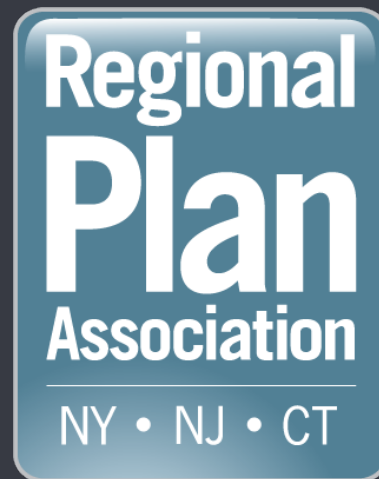
The Federal Role in Infrastructure Planning

- Strong national vision.
- Funding tied to meeting goals and objectives.
- Increase interagency cooperation (i.e. HUD-EPA-DOT partnership.)
- Reward regions that





www.America2050.org



www.rpa.org