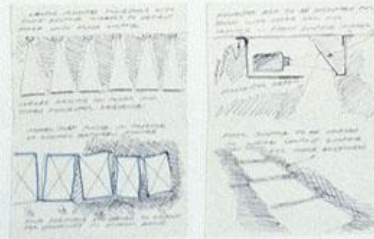
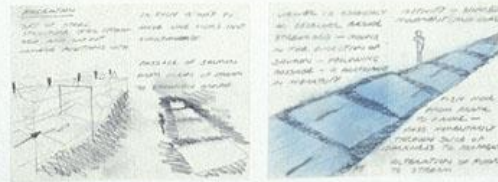
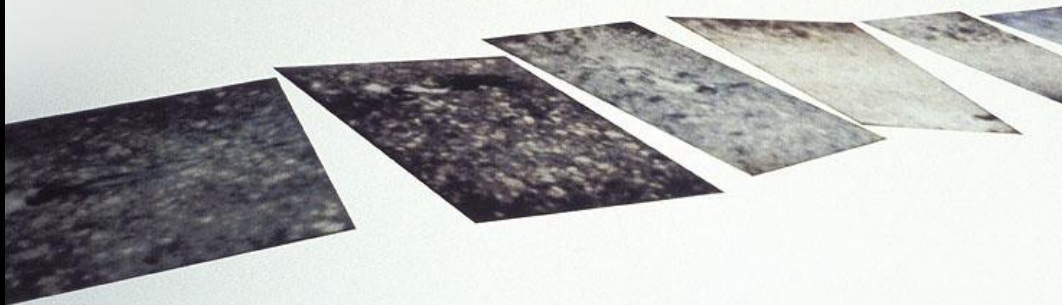
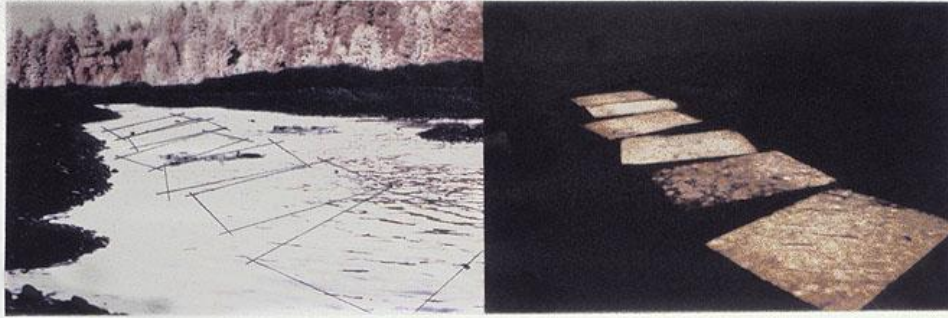
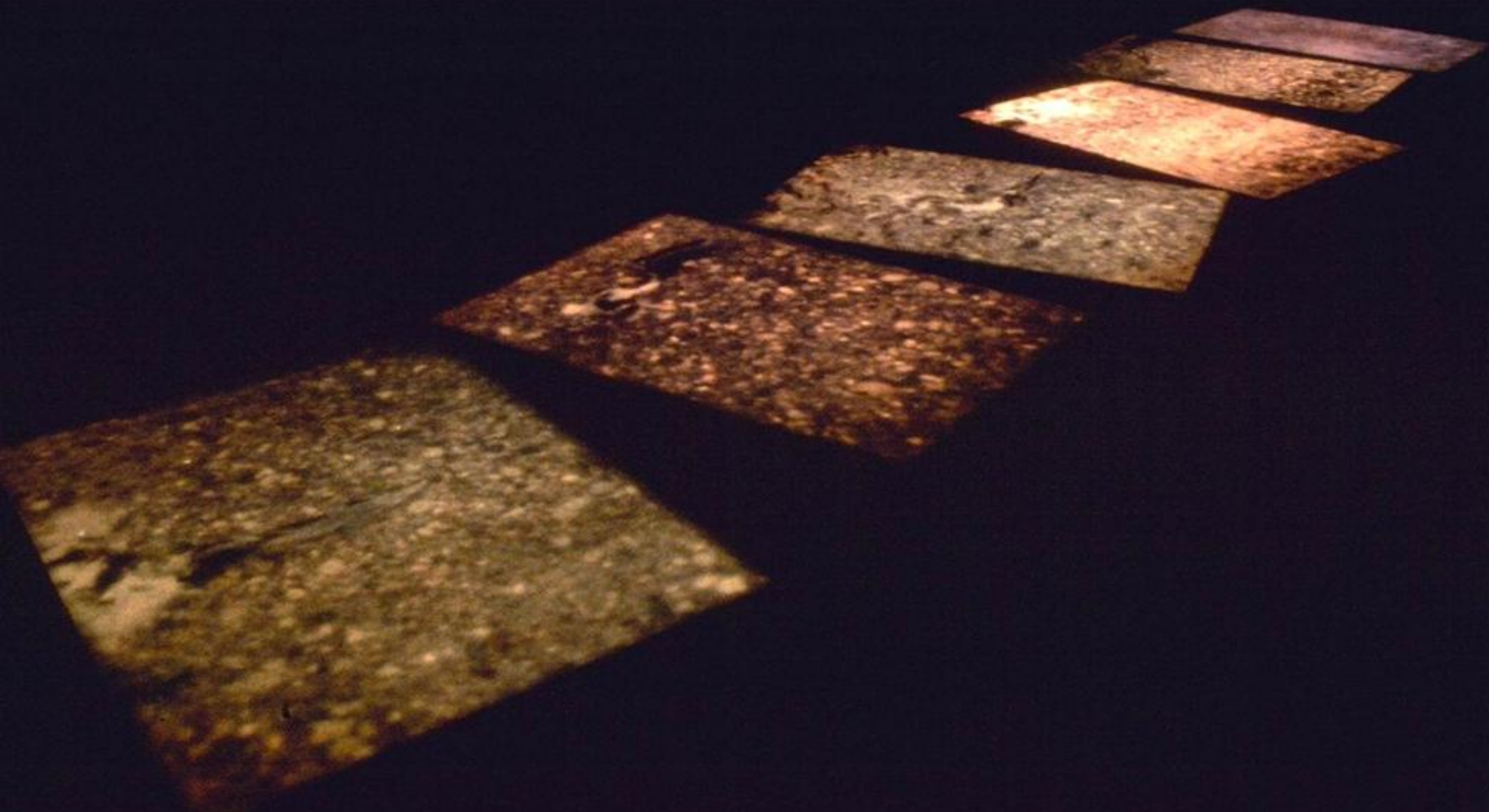


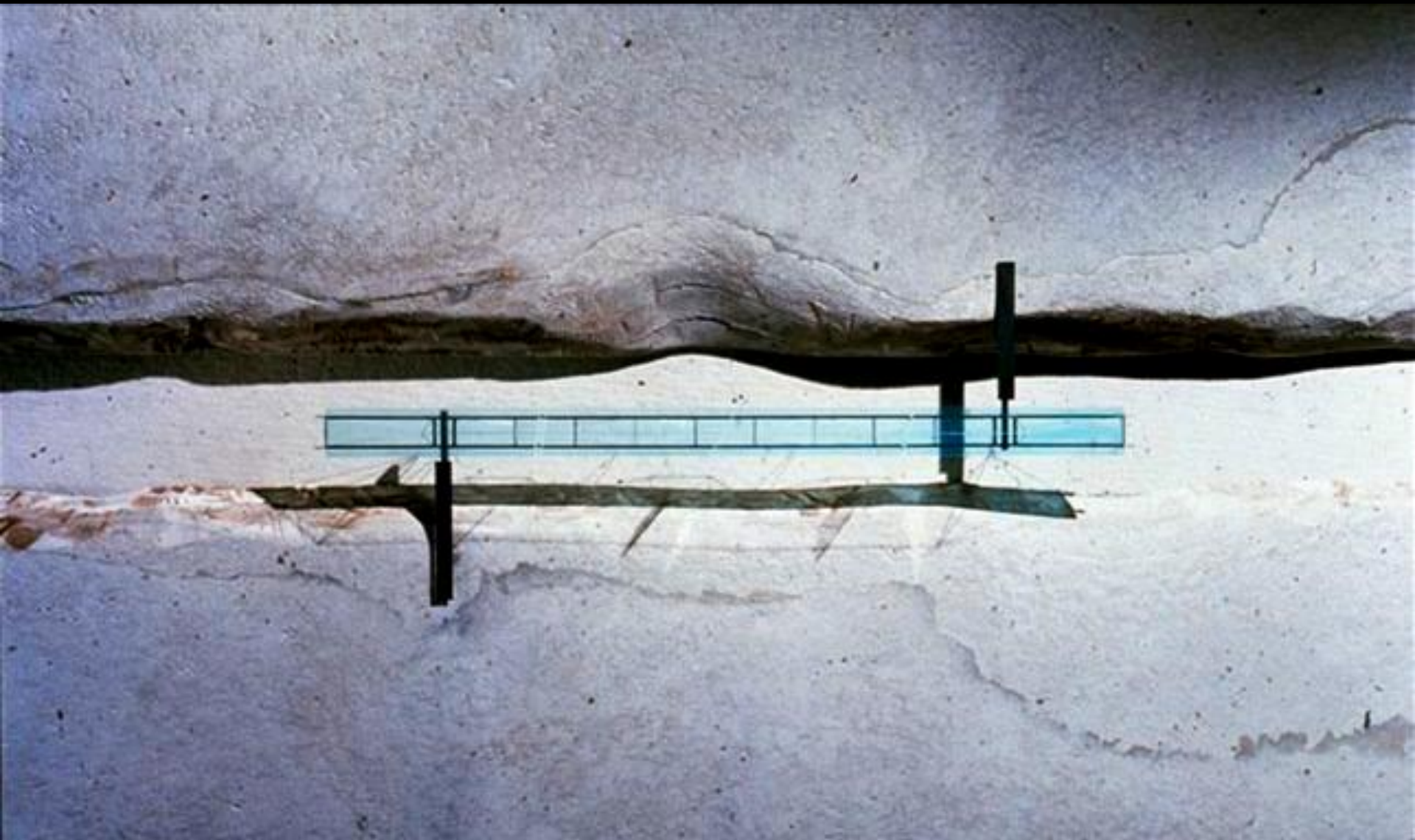
A large, bright, circular beam of light illuminates a dark, textured background, possibly a wall or ceiling. The light is a warm, golden-yellow color and is centered in the frame. The background is dark and appears to be a rough, stone-like surface. The overall effect is one of focused illumination and contrast.

Light in the Public Realm

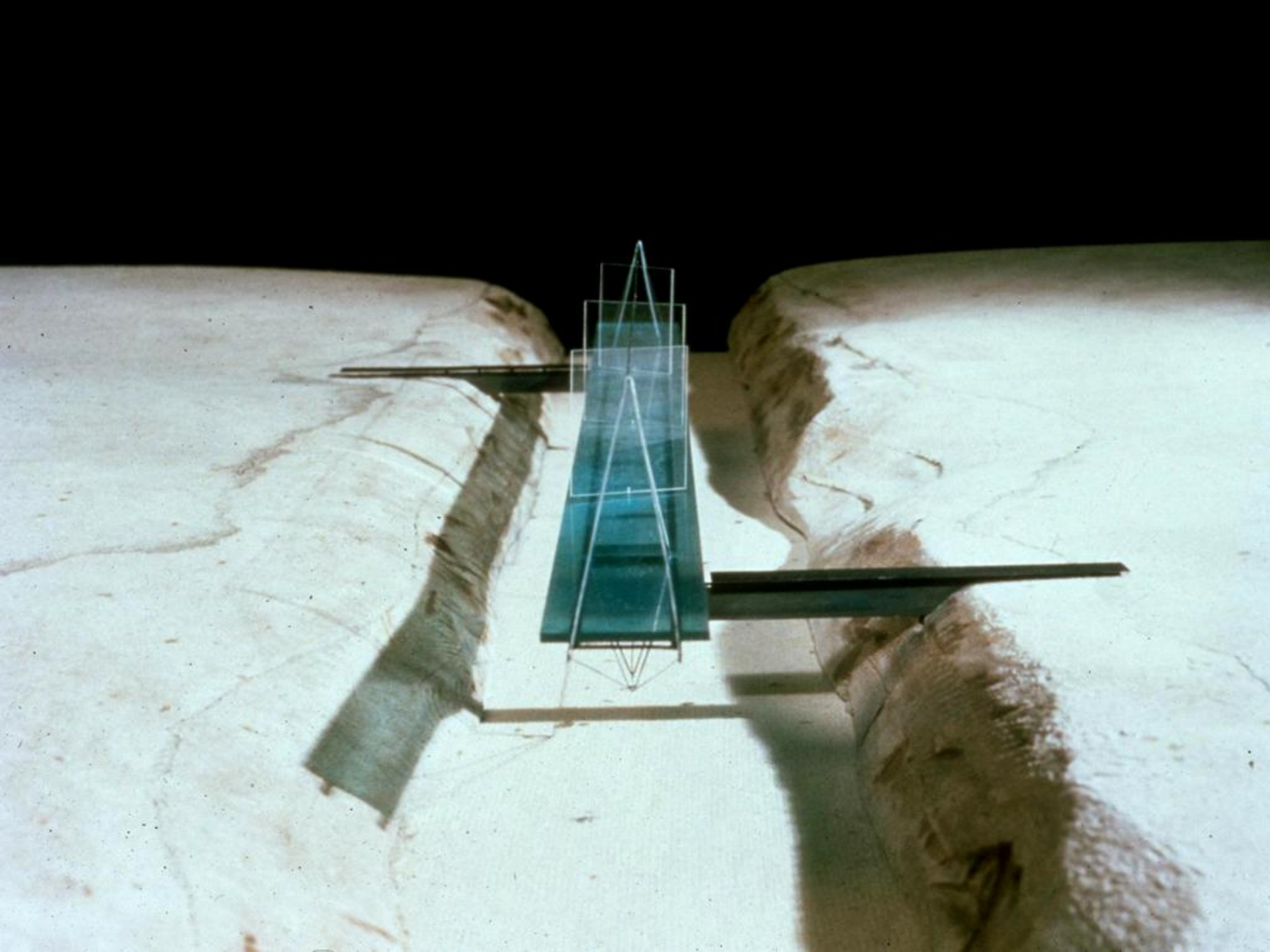
James Carpenter Design Associates Inc



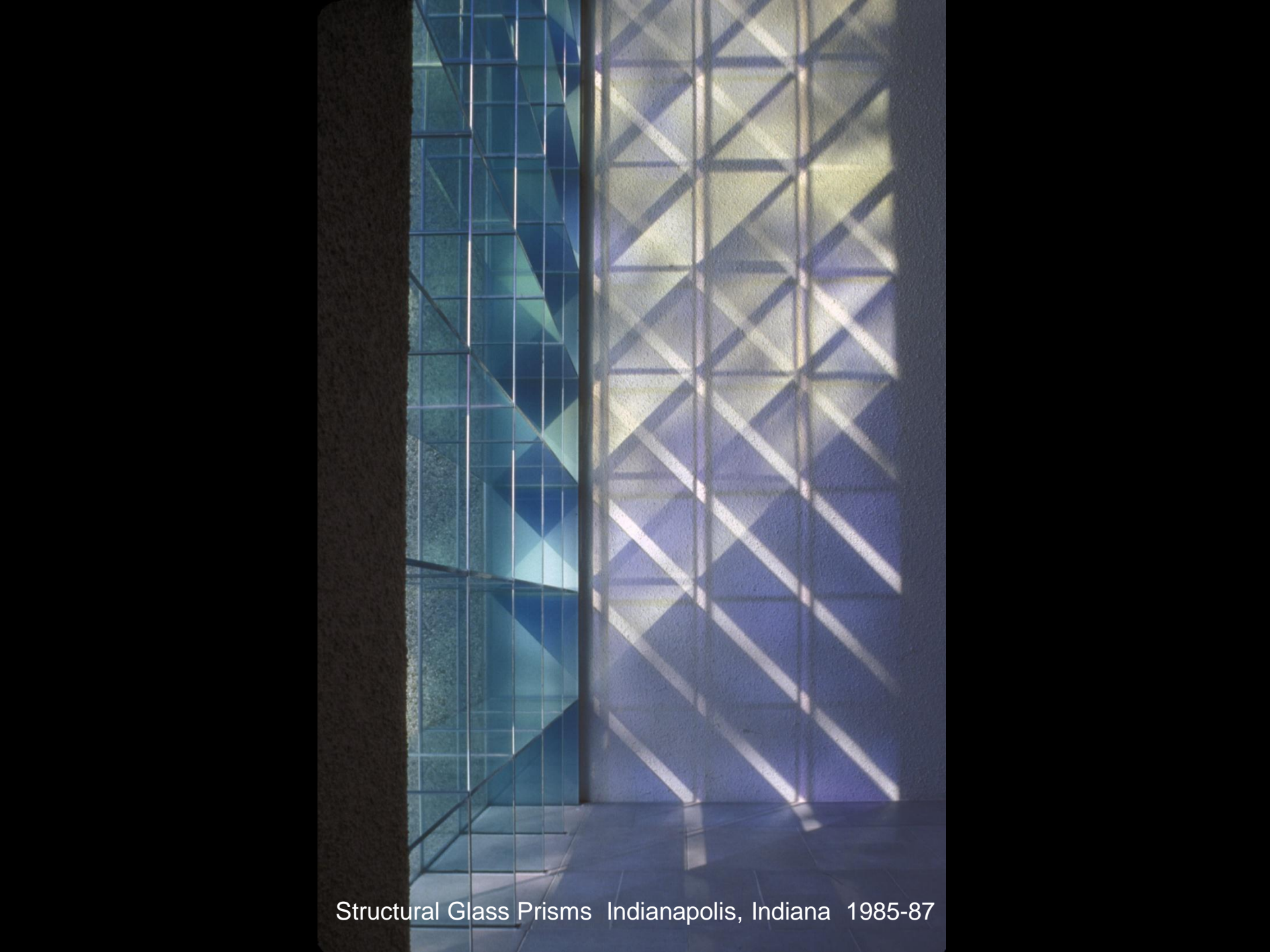




Luminous Glass Bridge Marin County, CA 1987







Structural Glass Prisms Indianapolis, Indiana 1985-87





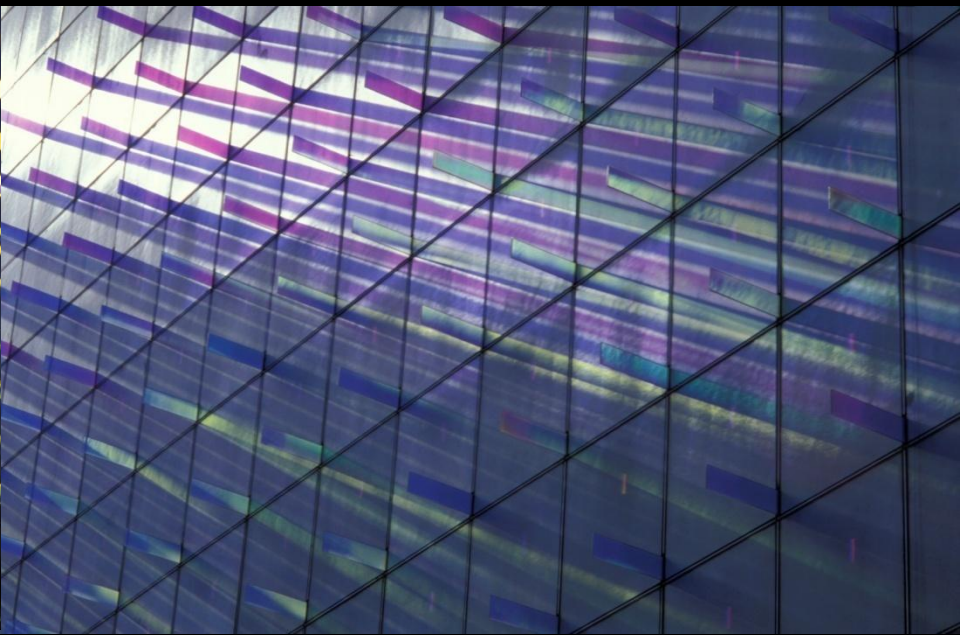
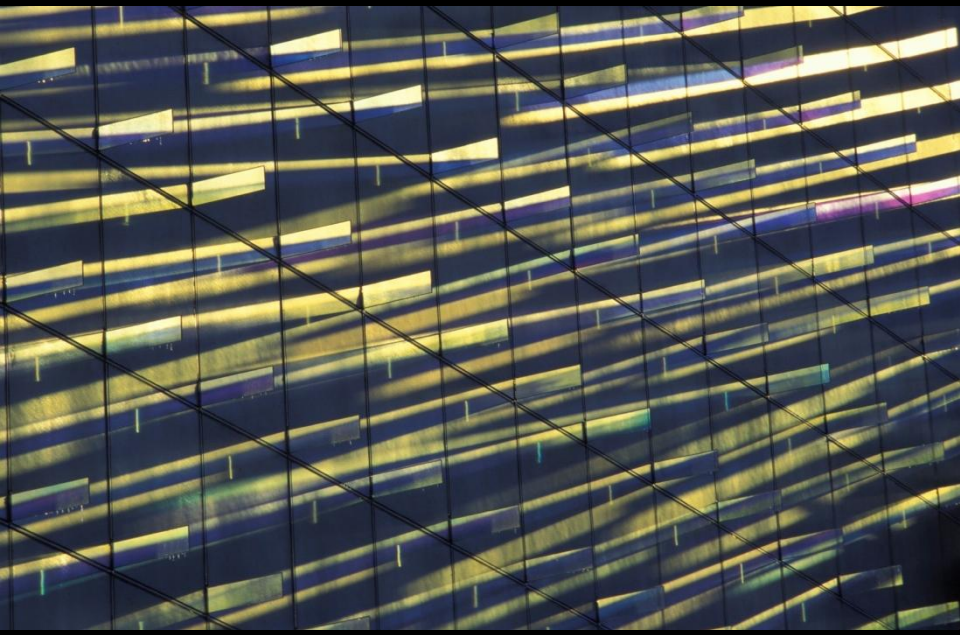






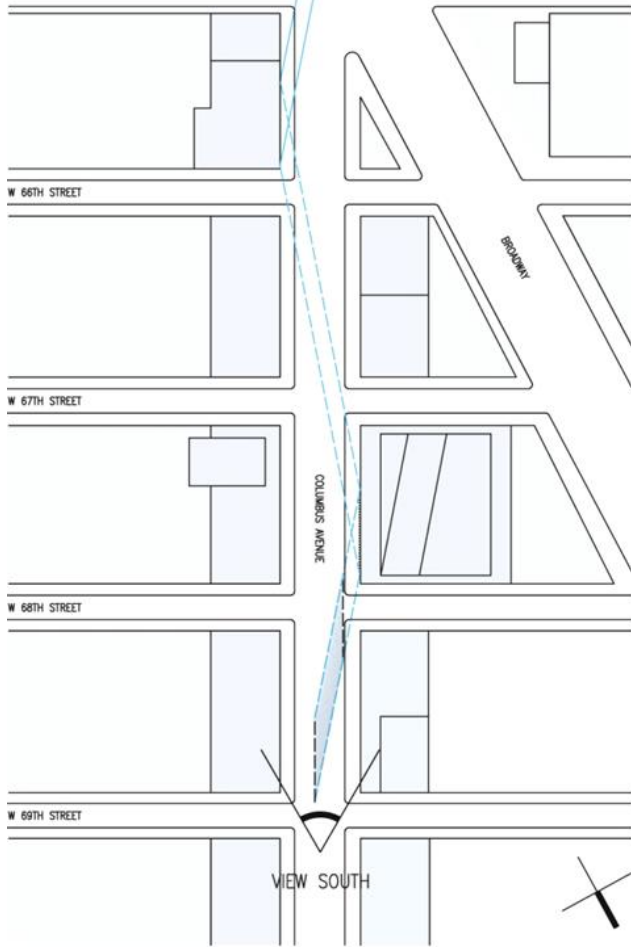
Dichroic Light Field New York, NY 1994-1995







Dec 21-02:45pm

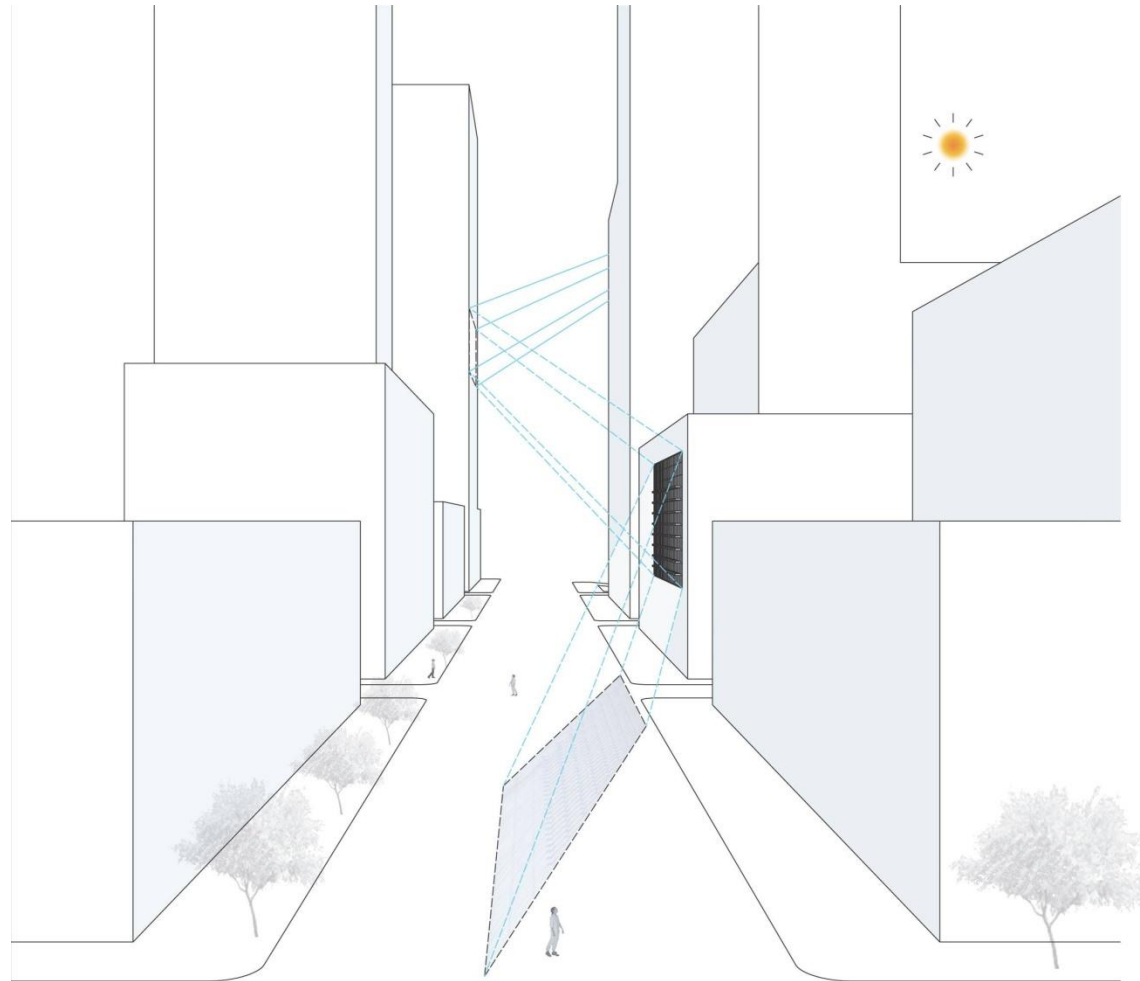


VIEW SOUTH



PLAN

SCALE: 1/256" = 1'-0"

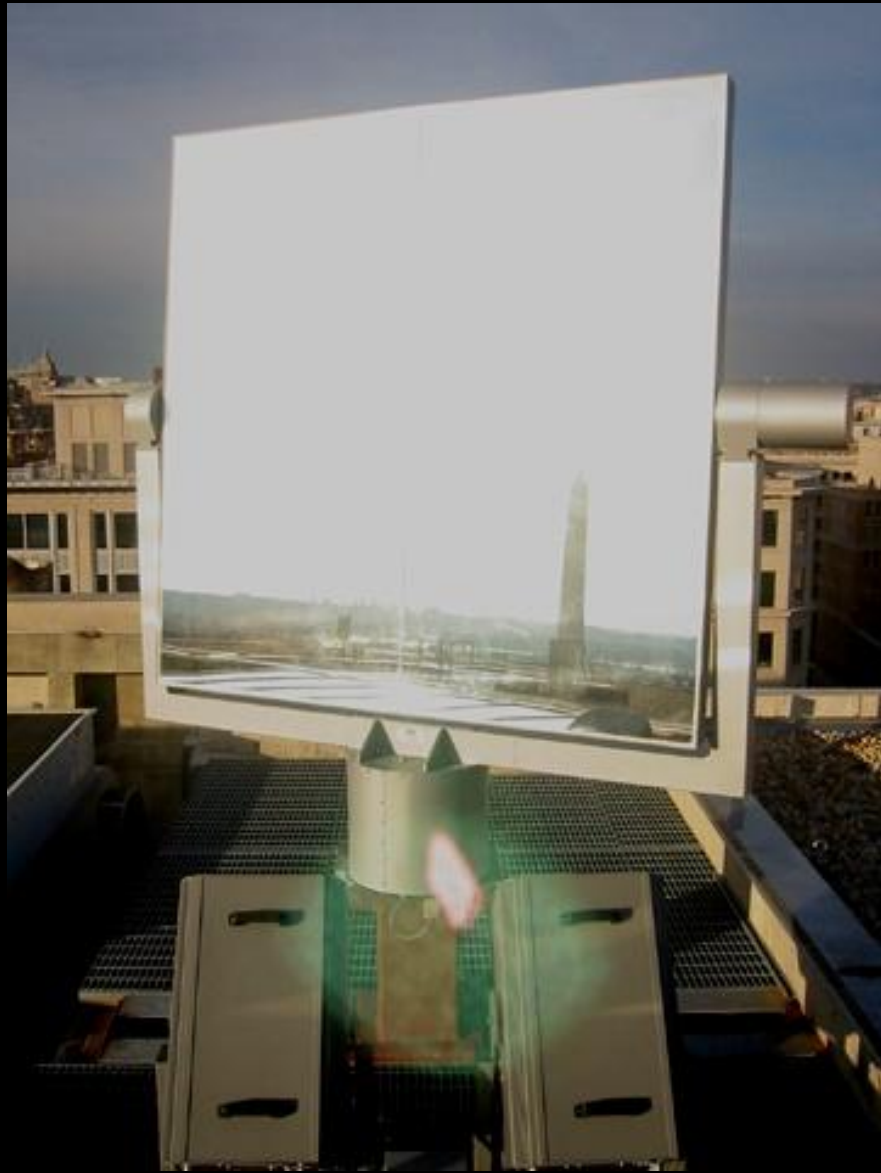


VIEW SOUTH





Solar Light Pipe, Washington, DC,
2002









Luminous Threshold 2000 Sydney Olympics, Australia 1995-98





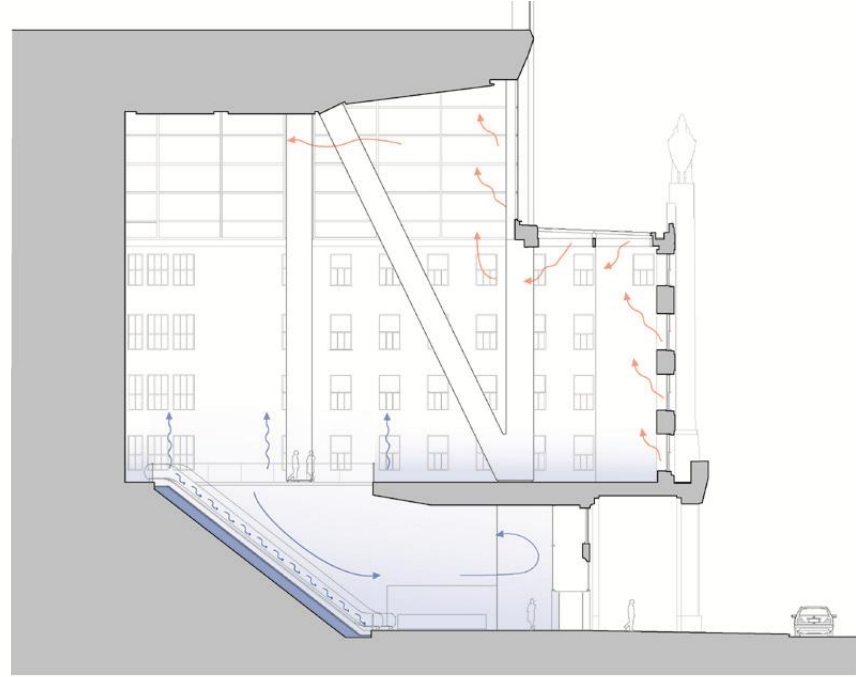
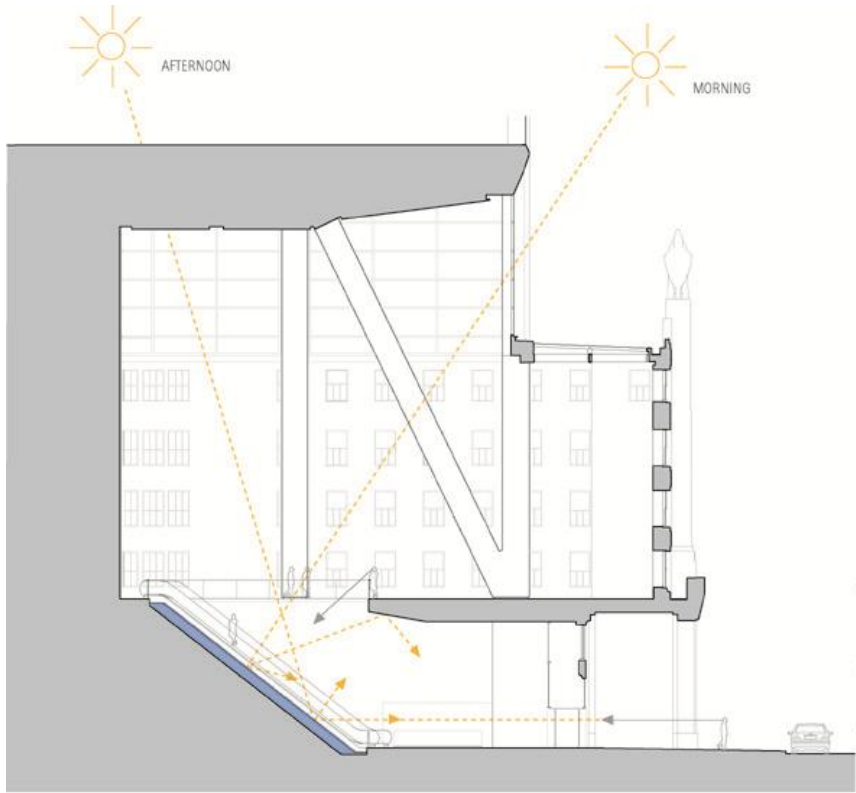


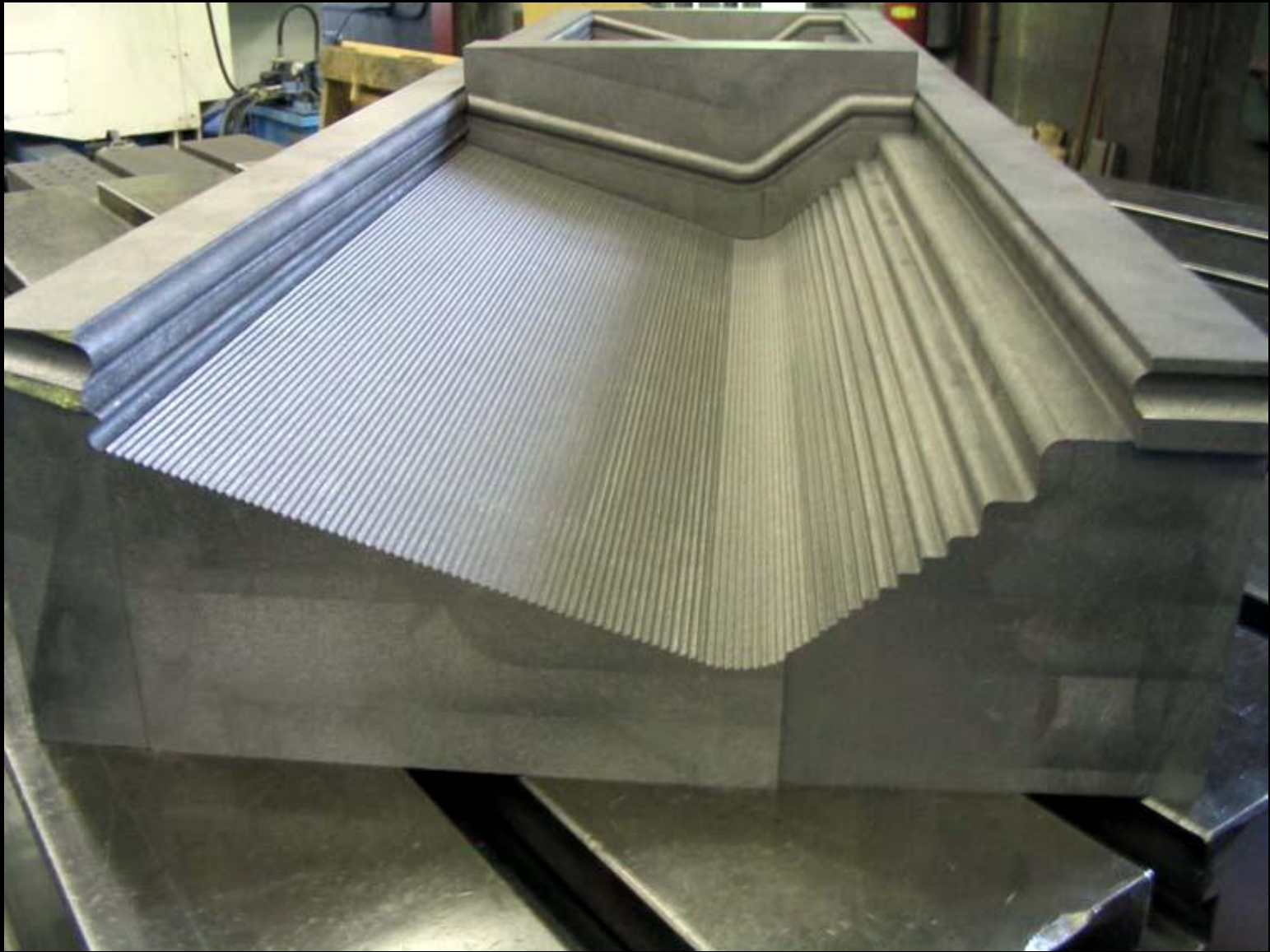




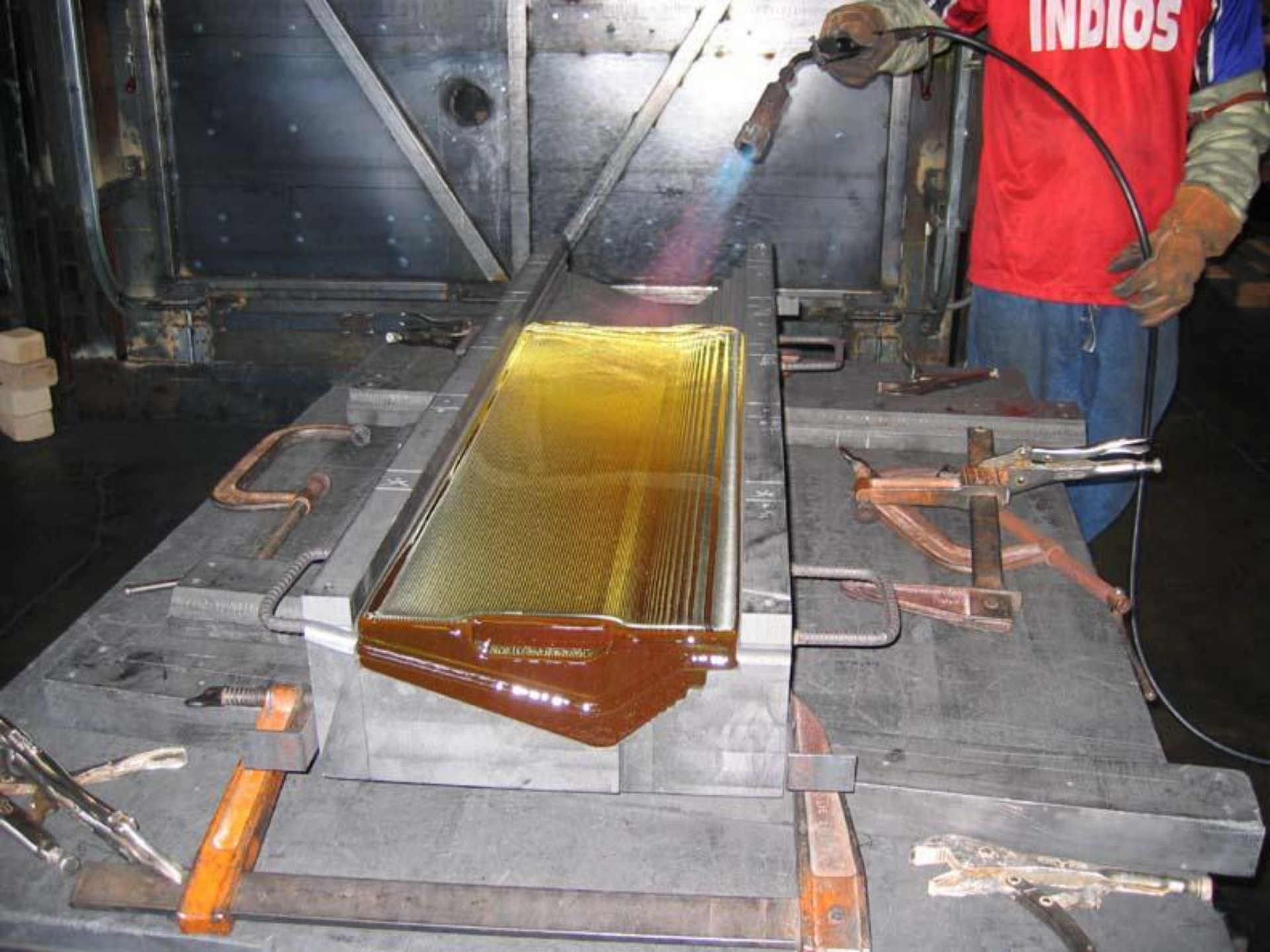


Ice Falls Hearst Tower, New York, New York 2002-06



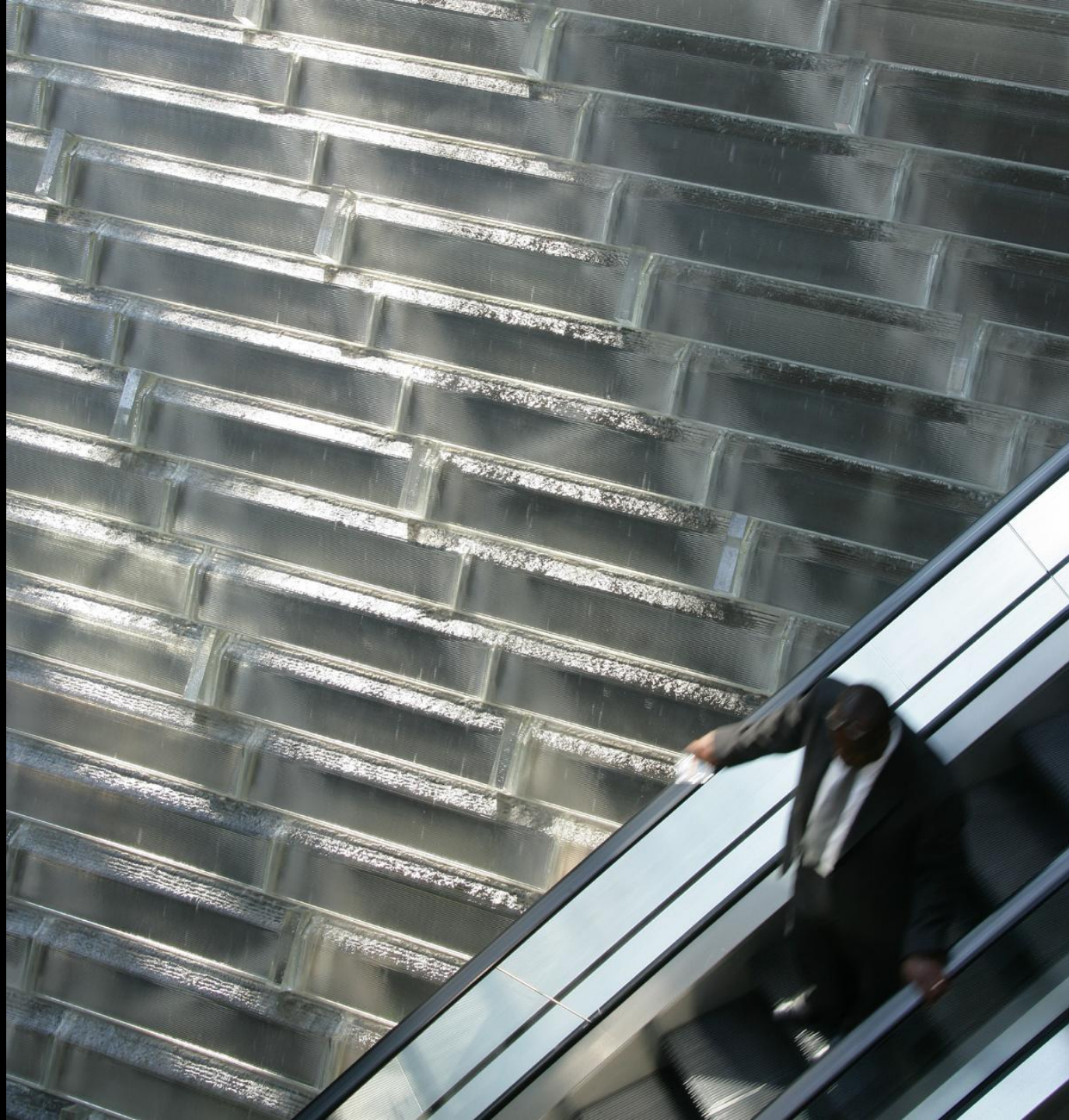








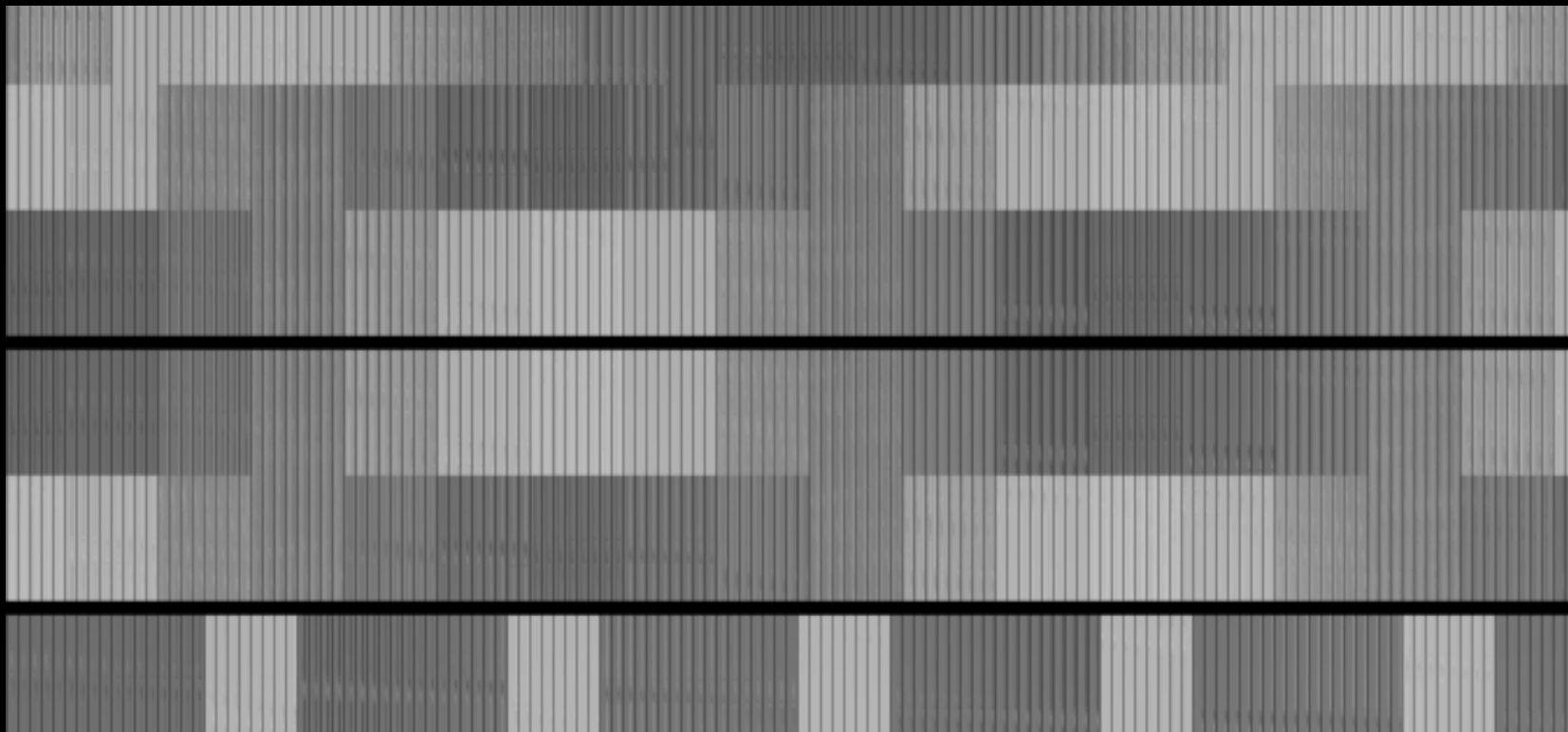




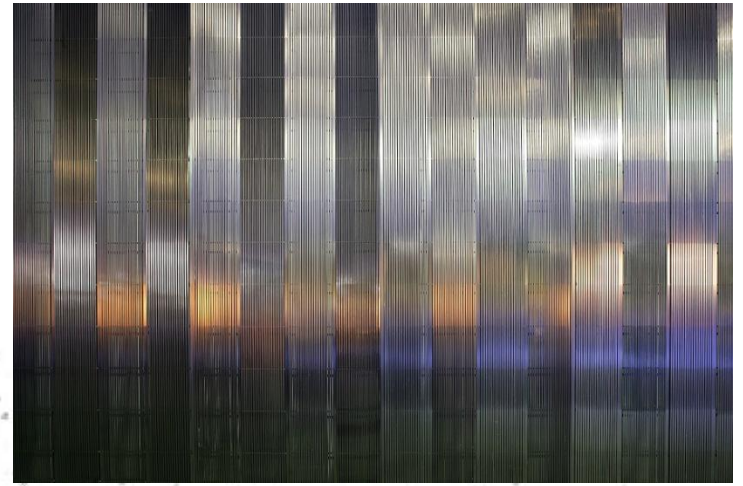
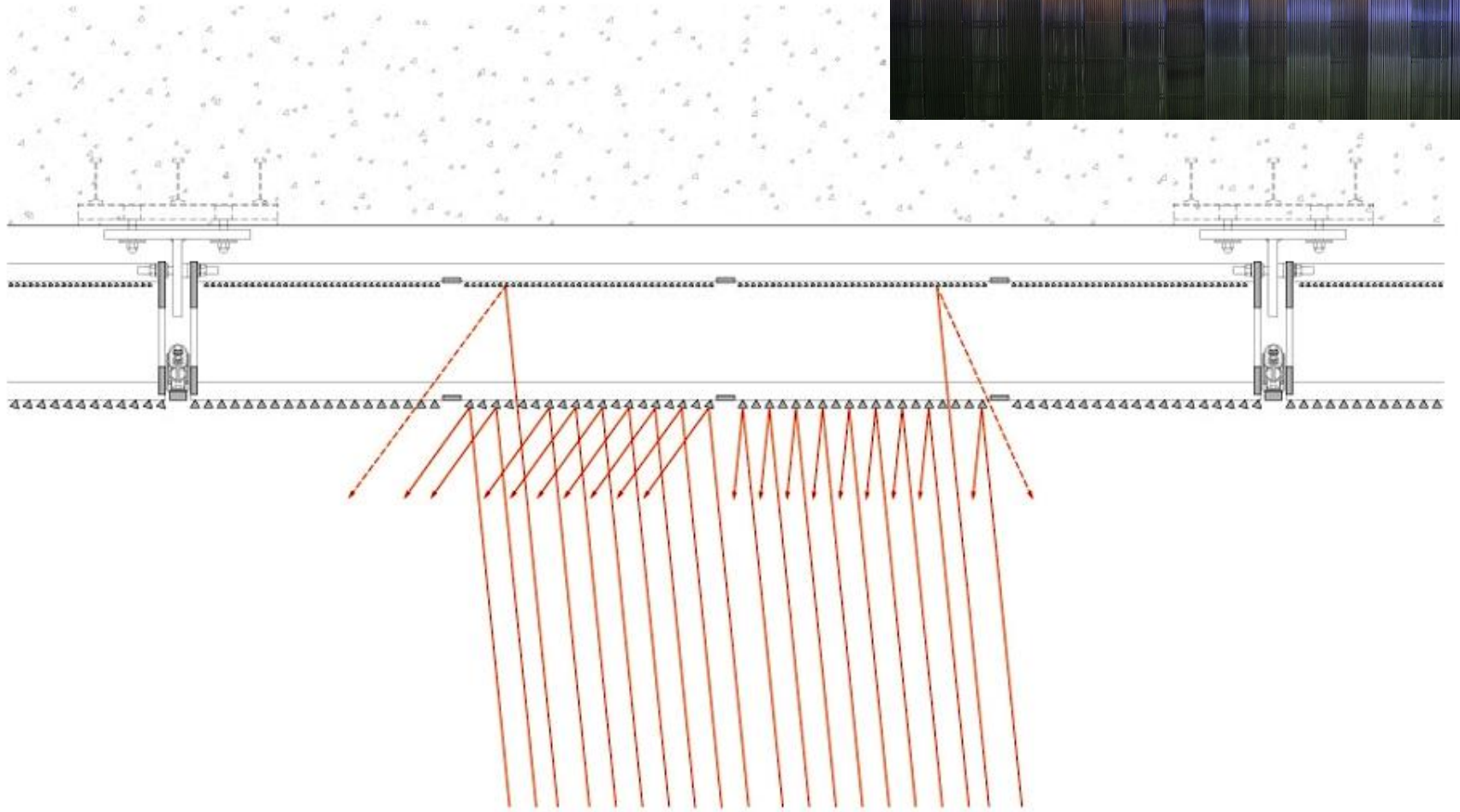




7 World Trade Center, New York, NY 2002-2006







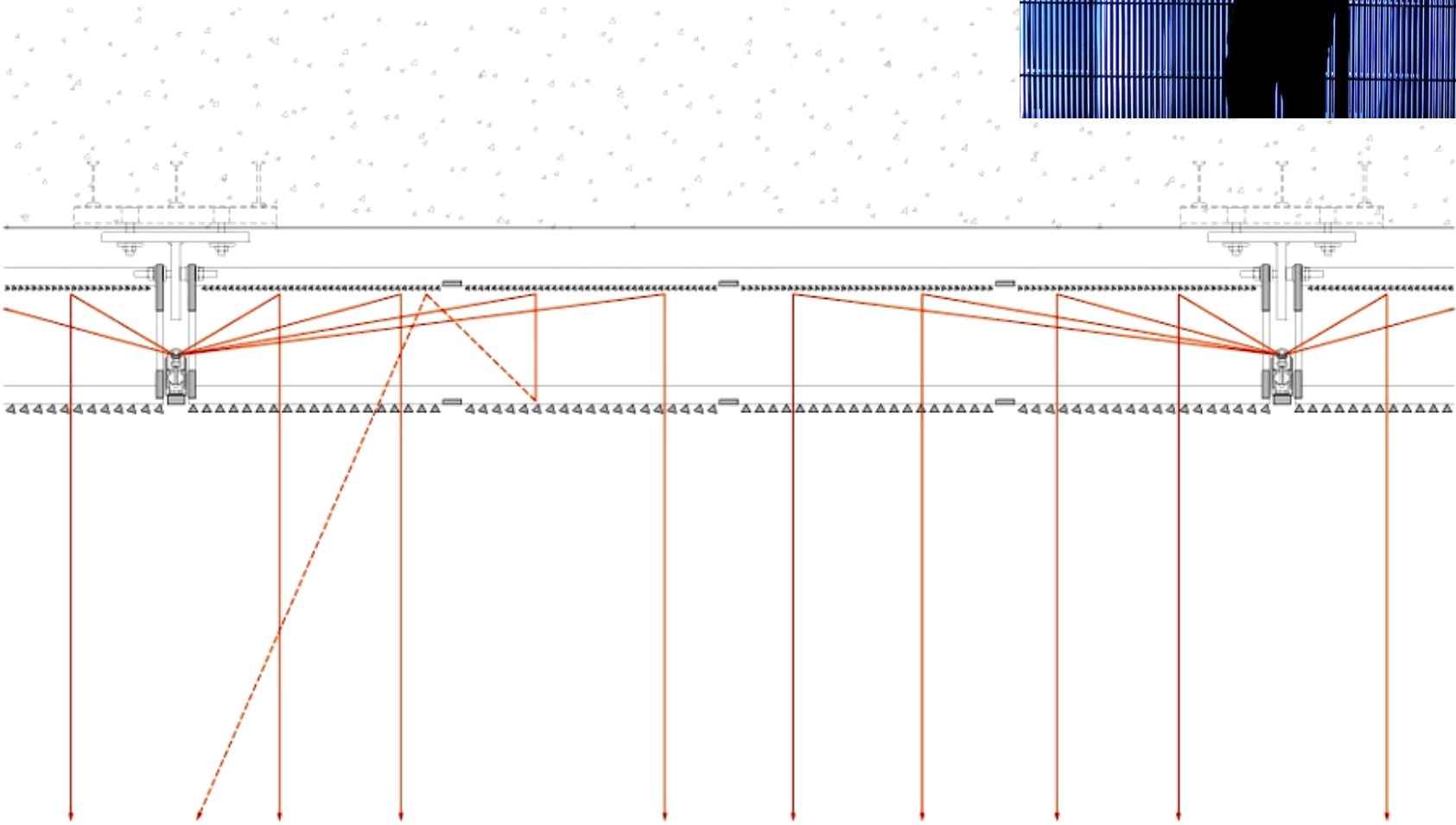


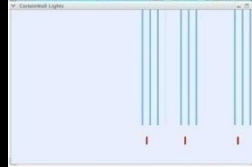
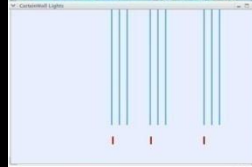
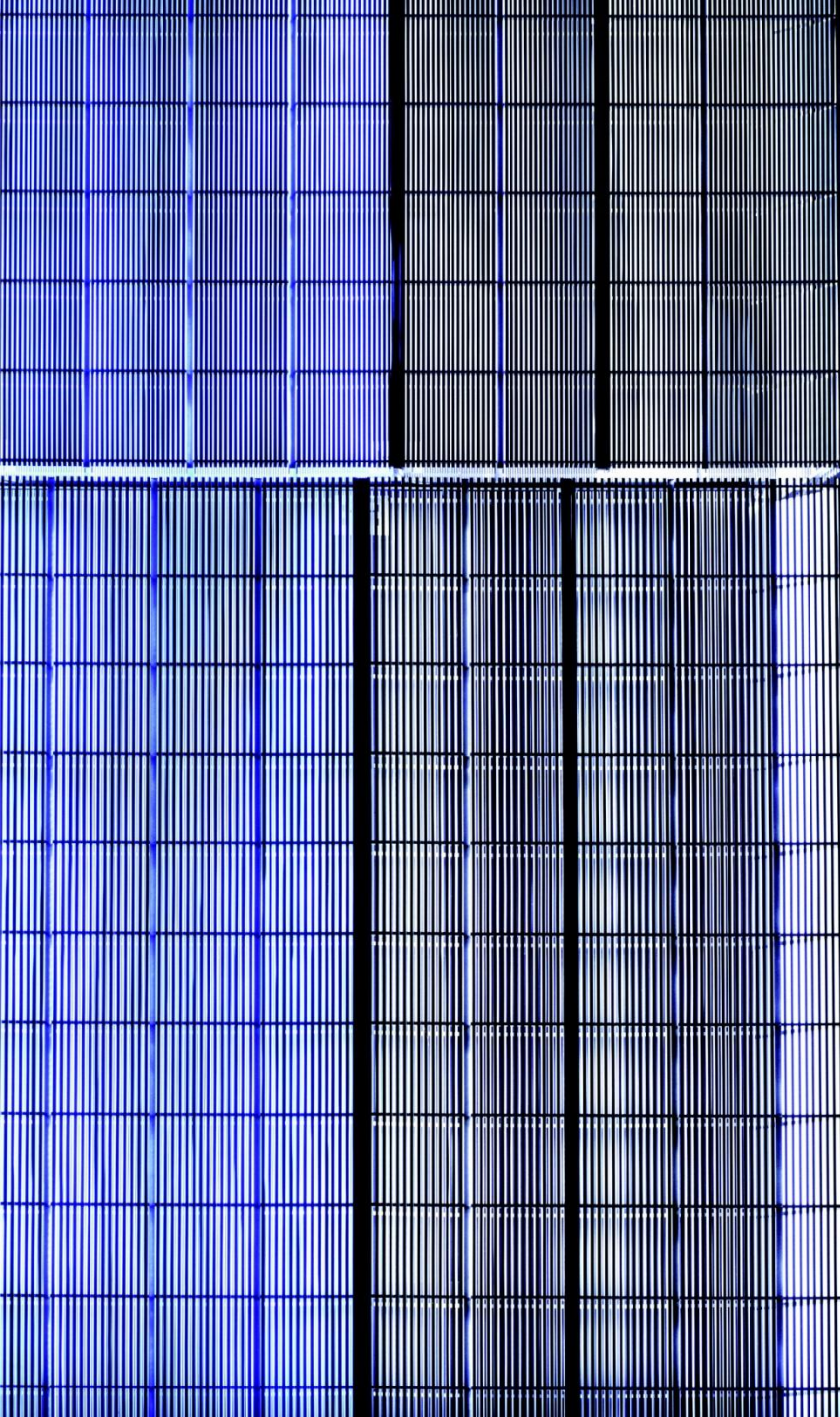
THE REBUILDING CONTINUES
TISHMAN

ONE WAY TRAFFIC











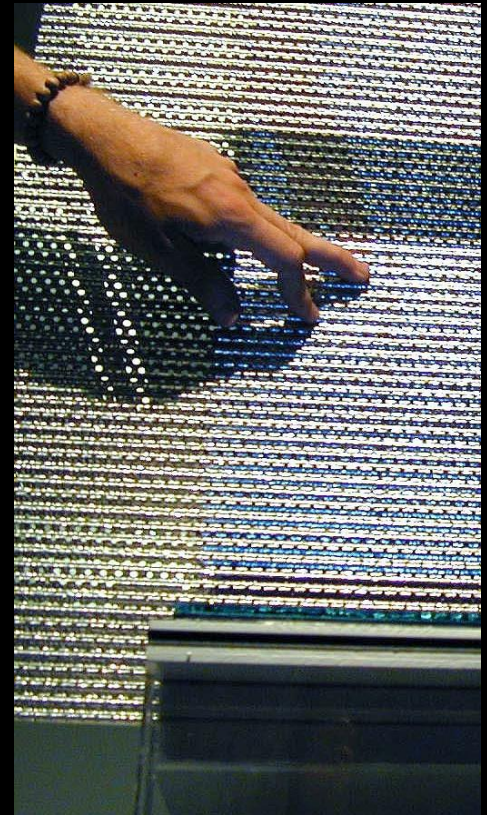


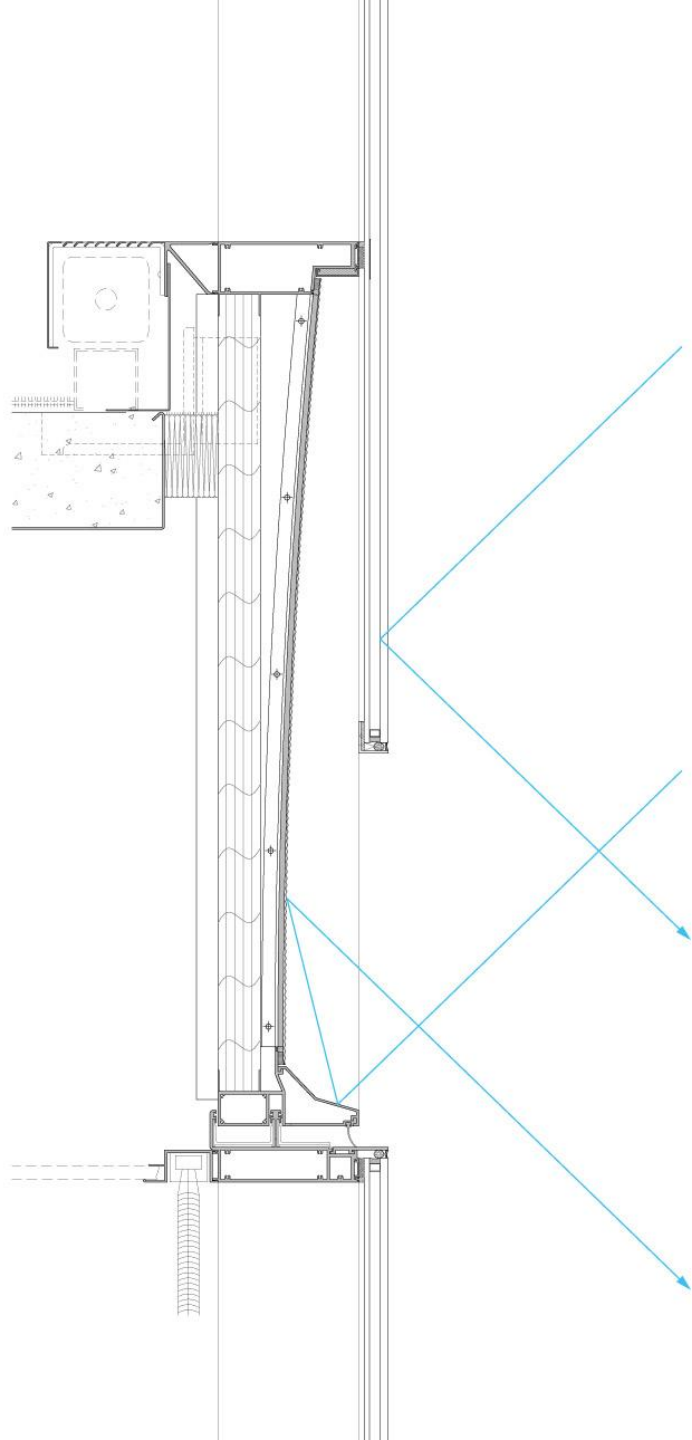




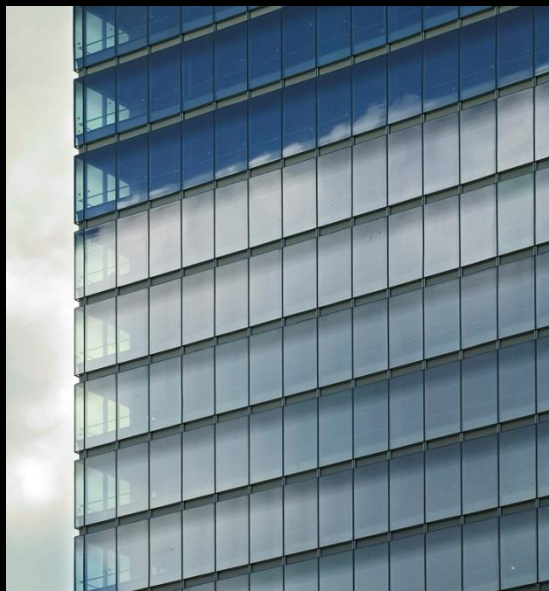
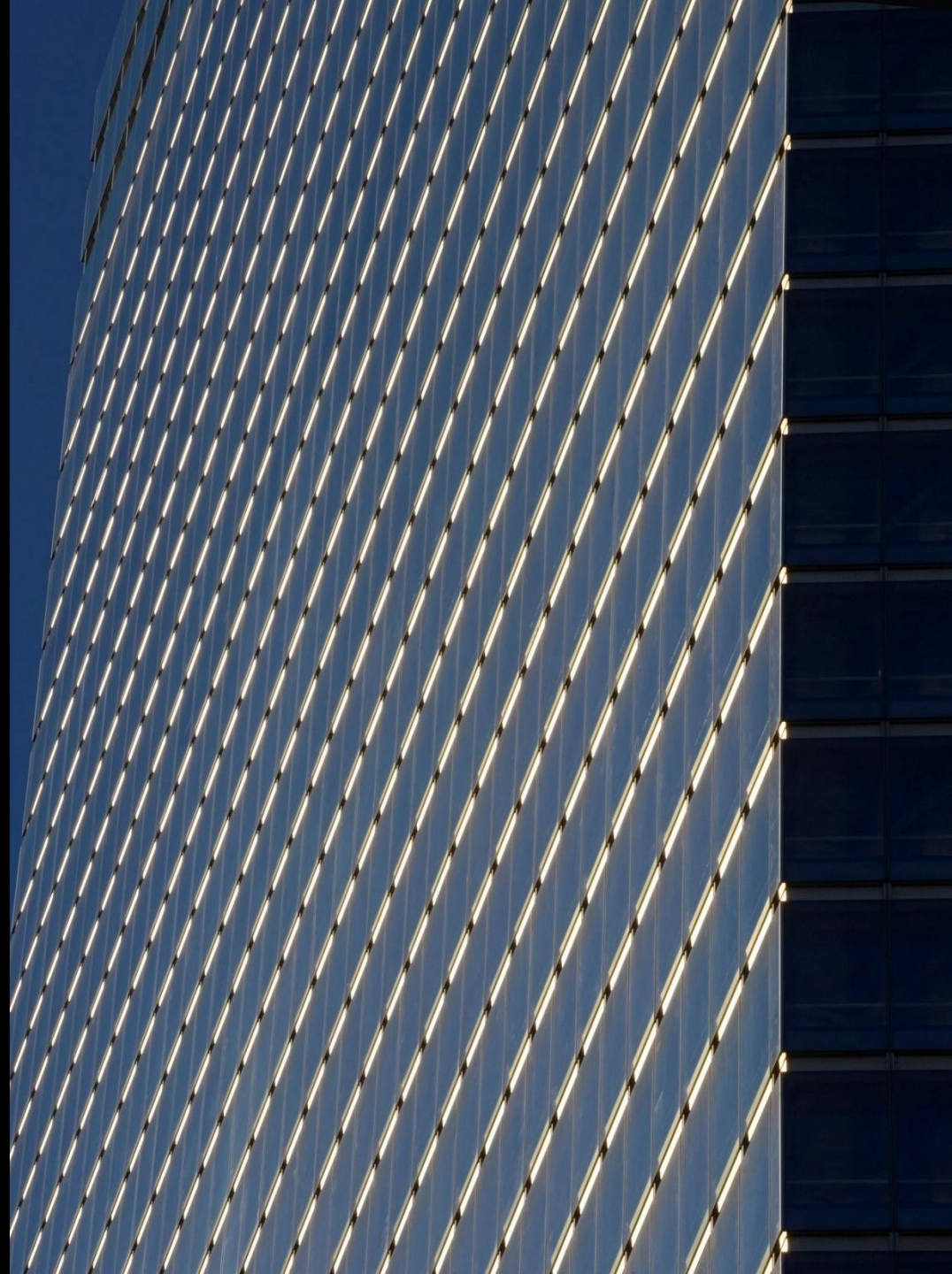








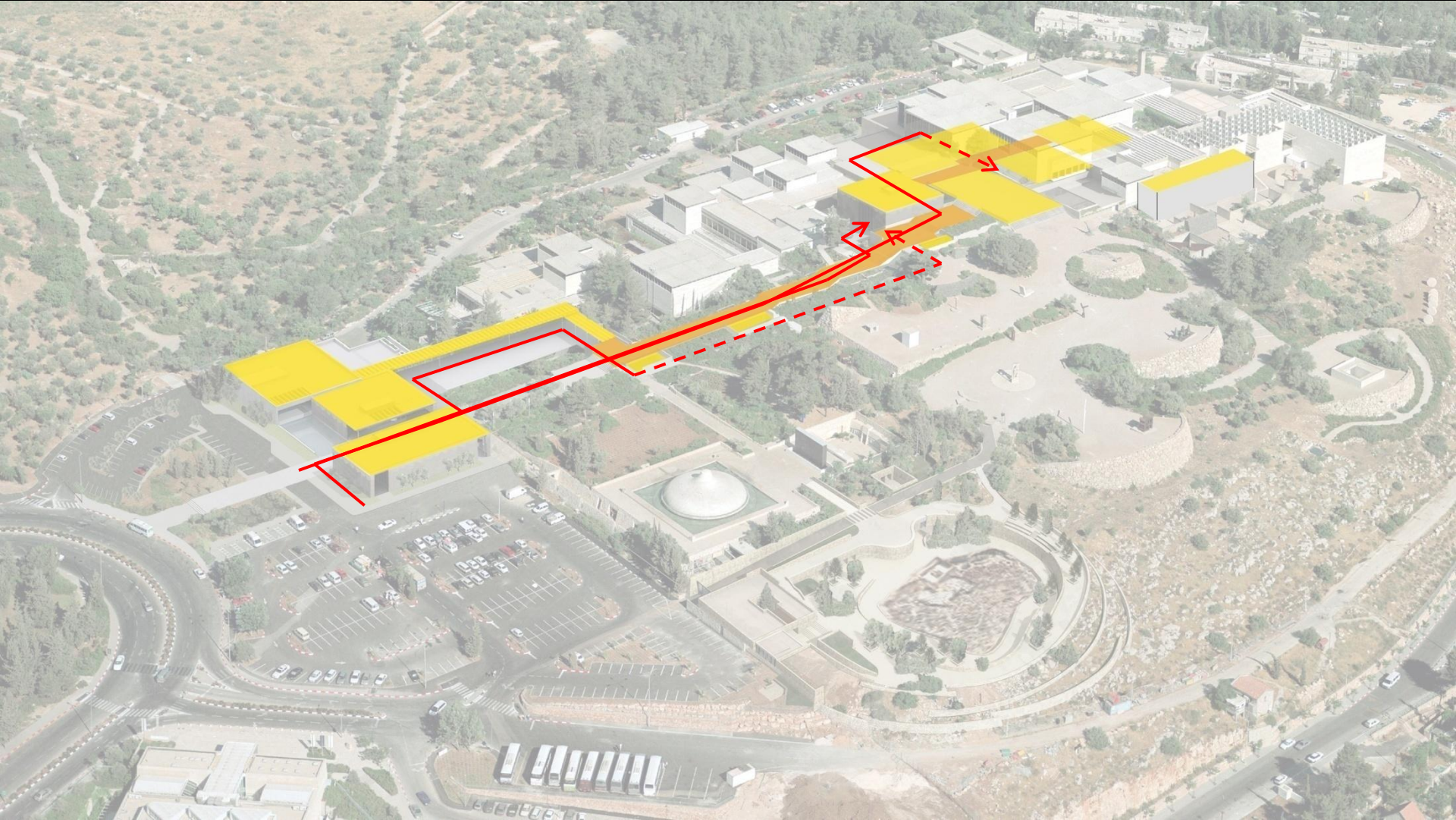




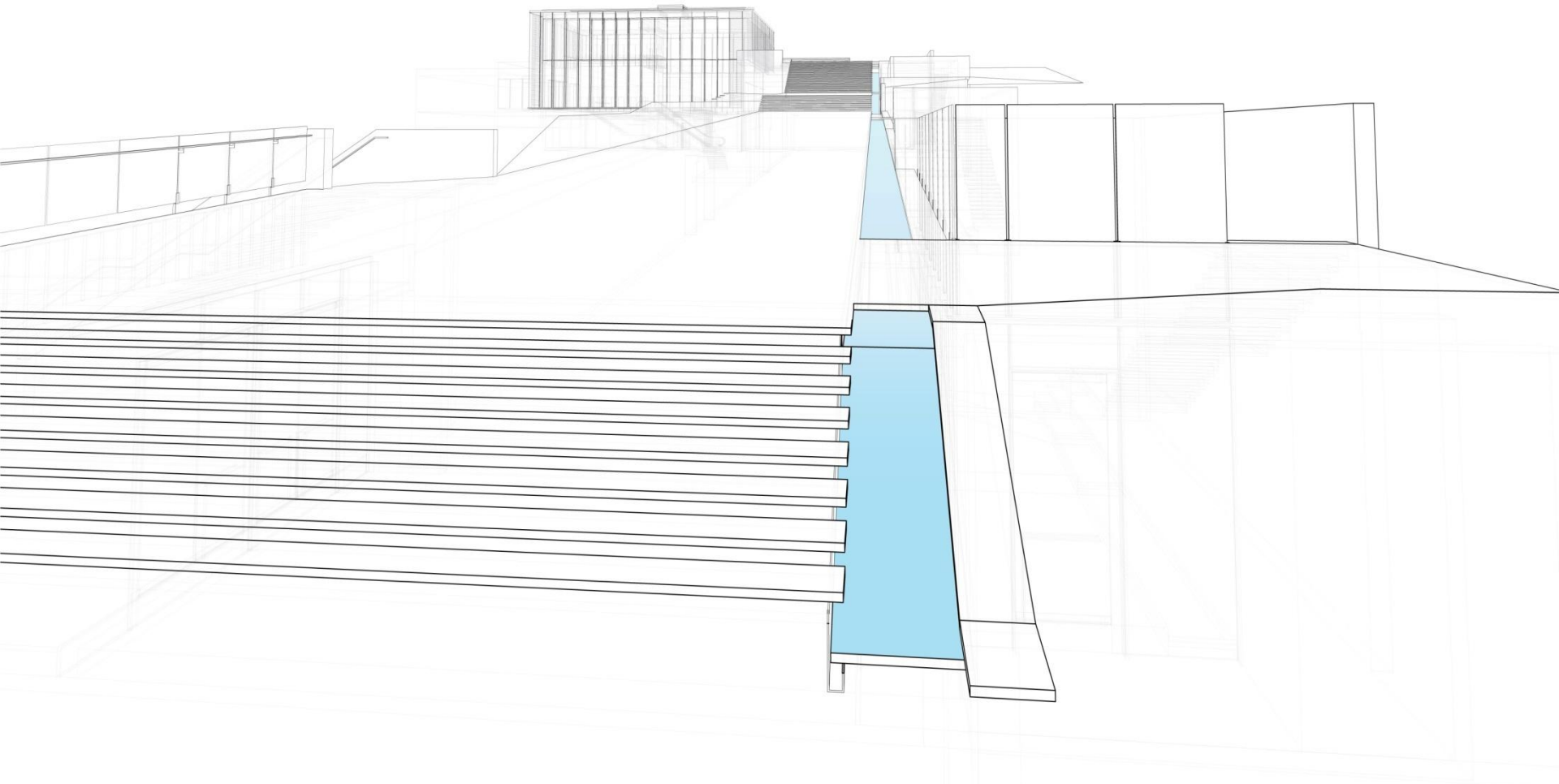




Israel Museum, Jerusalem, Israel 2005-2010



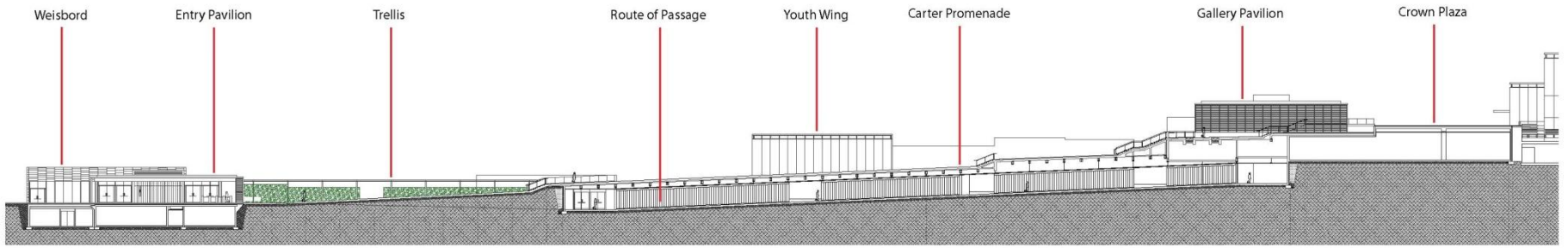
Israel Museum Visitor Circulation Sequence



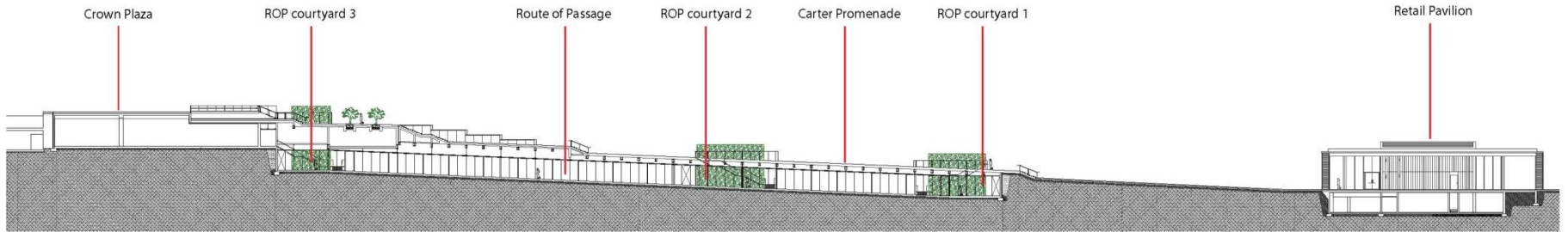
Israel Museum Primary Visitor Pathway



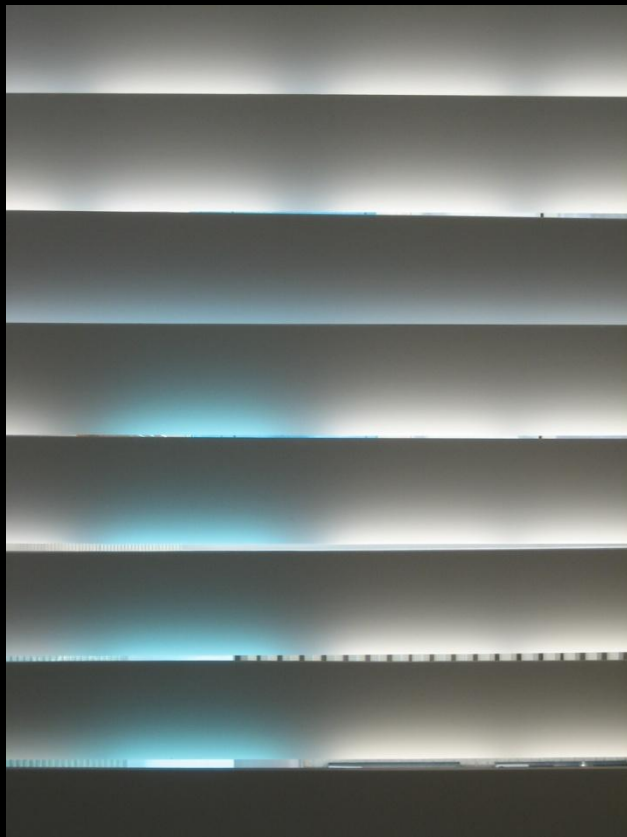
Israel Museum Primary Visitor Pathway



Section A



Section B









درباره ورودی
entrance مدخل



























