



COLUMBIA UNIVERSITY SCHOOL OF SOCIAL WORK

ALUMNI NEWSLETTER • FALL 2001
www.columbia.edu/cu/ssw/alumni

THE CUSSW RESPONSE TO THE WORLD TRADE CENTER TRAGEDY



THE DEVASTATING ATTACKS on the World Trade Center on September 11, 2001, brought out an extraordinary response on the part of the CUSSW family — faculty, staff, students, and alumni/ae. A partial listing of the remarkable voluntary efforts of the CUSSW community during the weeks following the attack provides a sense of what the School can achieve when confronted with a crisis of this magnitude.

As Interim Dean Sheila B. Kamerman and the School's leadership began to understand the full scale of the devastation that day, their initial response was to keep the School open with faculty and staff providing a continuing source of information and support for those students who appeared for classes. The School supplied food for everyone in the building and organized informal discussion groups for students. By early afternoon, CUSSW was already receiving phone calls and emails both with requests for help — in particular counseling services — and offers of assistance from faculty, students, administrators and alumni/ae.

Assistant Dean and Director of Field Education, Dr. Kathryn Conroy, served as CUSSW's "point person," obtaining information about students and field instructors in the lower Manhattan area, making information available to those wanting to help, and coordinating the various emerging tasks and activities. Her office became the center for planning many of these activities and, most importantly, responding to the many requests.

The projects initially identified as appropriate for CUSSW clinical faculty and administrators as part of its response to the World Trade Center attacks included counseling individuals and groups, working with agency managers and their staff, and counseling teachers, staff, children and parents at Community School District 5 and elsewhere.

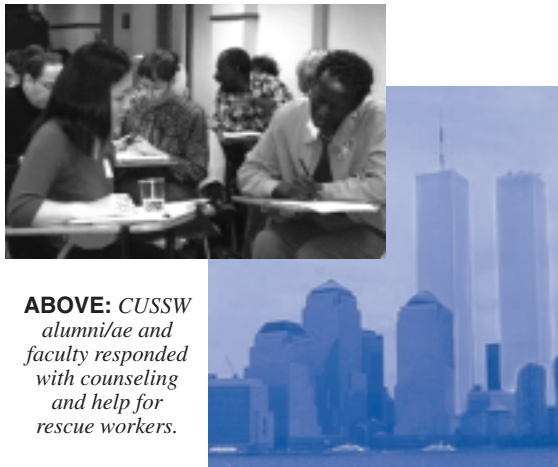
"...the remarkable voluntary efforts ...provide a sense of what the School can achieve when confronted with a crisis of this magnitude."

More specifically, during the first three weeks following the terrorist attacks:

- Numerous clinical practice faculty, field advisors, and administrators provided individual counseling services, led group discussions, offered support services, carried out workshops at agencies with managers and their staff, and worked with teachers, children and parents in Community School District 5.
- Faculty, field and administrators offered counseling to students and staff through the University's Counseling Services in Lerner Hall and at Uris Hall for students and staff at the Business School. One faculty member facilitated a group of 20 employees of the Business School's Alumni and Development office who had to call alumni who worked at the WTC and find out their status.

- Faculty and field personnel ran Critical Incident Stress Debriefing groups during the weeks following the catastrophe, with attendance ranging from two to twenty-two. Over time the focus of the group sessions became more oriented to training participants to provide support services to other staff.

- Faculty and Field Instructors provided trauma and stress reduction training sessions for administrators and staff in many public and private agen-



ABOVE: CUSSW alumni/ae and faculty responded with counseling and help for rescue workers.

cies and organizations including: the Salvation Army; Manhattan Comprehensive Day and Night High School; New York University School of Social Work; New York City's Administration For Children's services; and the Jewish Home and Hospital Administrators and staff.

- Faculty and field instructors provided personnel at the New York Fire Department with trauma and grief counseling work with families of lost firefighters.

- Faculty members, researchers, and alumni/ae have offered and are continuing to offer services to Community School Districts: drop-in groups for parents to help them respond to their children's questions and fears; and training sessions for Pupil Personnel Staff (social workers and guidance counselors) in post-traumatic stress counseling.

- In response to special requests from the Consulate General of Japan, the Japanese American Social Services agency, and several other organizations with Japanese employees, faculty member Dr. Tazuko Shibuzawa provided counseling services.

- Several faculty members carried out counseling in suburban communities where many of the families of the dead and missing lived.

- Workshops on community intervention strategies for those impacted by the WTC disaster were provided to staff at St. Luke's and Bronx Municipal Hospitals.

- Faculty and administrators prepared and delivered food to rescue workers, provided clothing, opened up homes for people to stay over September 11, and gave blood.

- Students repeatedly asked what they could do. Not being certified social workers they were precluded from a number of organized efforts but

(Continued on page 11)

CUSSW RECEIVES KRESGE FOUNDATION GRANT

The Kresge Foundation has awarded the Columbia University School of Social Work a challenge grant of \$500,000 toward the construction of its new instructional facility. After a one-year review process, during which the Foundation closely examined the School's architectural and construction plans, its funding campaign and structure, and all other aspects of its building timetable, Kresge announced its award in December 2000. One of only two schools at Columbia University to receive a Kresge Grant, CUSSW is proud to receive this distinguished award.

At its Website, the Kresge Foundation states that it is "an independent, private foundation, and that it was created in 1924 by Sebastian S. Kresge 'to promote the well-being of mankind.' Through [its] grantmaking programs, [it seeks] to strengthen the capacity of charitable organizations to provide effective programs of quality." One of the country's most prestigious and competitive private foundations, the Kresge Foundation, located in Troy, Michigan, is also one of the few that makes grants for capital projects including the construction of facilities. By choosing the Columbia University School of Social Work for this award, the Kresge Foundation has recognized the School of Social Work as one of the leading centers of social work education and scholarship in the country and the world.

The Foundation is interested not only in assisting worthwhile projects with their building plans, but also in expanding and strengthening each recipient's donor base for the long-term future. In its own words, "We believe that a challenge grant toward an organization's capital project does more than just build a building or reward good programs. It presents an opportunity to build institutional capacity by helping an organization broaden and deepen its base of support from the private sector and by encouraging volunteer involvement in the fund raising effort and beyond."

(Continued on page 5)

SHEILA B. KAMERMAN NAMED INTERIM DEAN FOR SCHOOL OF SOCIAL WORK

by James Devitt

Reprinted from the Columbia University Record

Professor Sheila B. Kamerman has been named interim dean of Columbia's School of Social Work. Kamerman, the Compton Foundation Centennial Professor for the Prevention of Children's and Youth Problems at Columbia's School of Social Work, specializes in child and family policy.



"Columbia and its School of Social Work are fortunate to have Sheila Kamerman serve as interim dean during this time of transition," said President George Rupp. "Her nearly 30 years at Columbia and her outstanding record make her well-suited to lead the School of Social Work for the upcoming academic year."

Kamerman obtained her doctorate in social work from Columbia in 1973. She held a research position at Columbia until 1979, when she became a member of the university's faculty. "Sheila Kamerman's scholarship on children and families put her at the forefront of the field," said Provost Jonathan Cole. "In addition, she has had a crucial role in making Columbia's School of Social Work one of the best in the country. Under her guidance, the school will continue to be a model for the profession."

Kamerman replaces Ronald Feldman, whose 15-year tenure as dean of the School of Social Work concluded at the end of the 2000-2001 academic year. Columbia expects to name a new dean by the start of the 2002-2003 academic year.

(Continued on page 11)



FROM THE ALUMNI ASSOCIATION PRESIDENT

by MaryEllen Bigham '95



MaryEllen Bigham

I am honored to have the opportunity to serve as president of the Alumni Association for the next two years. Working with past president **Susan A. Nayowith '84** during the past year as president-elect has been an exciting learning experience. I am grateful to Susan for the extra effort she put forth to make my transition to president a smooth one. The ad hoc committee Susan formed specifically to follow the progress of the new building provided new insights into community organizing. The committee, of which I was a part, worked alongside Dean Ronald A. Feldman and Senior Assistant Dean David Yam and many others. Susan and I attended numerous community meetings on behalf of all the CUSSW alumni/ae.

I want to say a special farewell, for a short time only, to Dean Feldman as he steps down and takes a one-year sabbatical before returning as the Ruth Harris Ottman Centennial Professor and director of the Center for the Study of Social Work Practice. Compton Foundation Centennial Professor for the Prevention of Children's and Youth Problems Shelia B. Kamerman will serve as Interim Dean. Dean Kamerman, who received her doctorate from CUSSW in 1973, is also director of the Columbia University Institute for Child and Family Policy.

The CUSSW Alumni Association has given me many opportunities to meet and work side by side with other alumni/ae in the social work profession. Our committees continue to evolve to meet the needs of the organization. Under the leadership of **Chuck Katze '58** and **Florentina Flamm '92**, the Conference Planning Committee provided us with a new format for the annual Alumni Conference. More alumni/ae attended the May 10th event than in the past several years, achieving our goal of allowing guests more time to network and socialize while also having the opportunity to hear very engaging speakers. The Development Committee, co-chaired by **Barbara Grodd '79** and **Carole C. Tjoa '68**, is diligently helping the School complete the terms for the Kresge Foundation Challenge Grant. They will also be planning more events to assist with the new building fund. The Doctoral Graduates Committee, under the direction of **Myrna Lewis '65 '00PhD** and **Steven Taylor '76 '84DSW**, is spearheading a new doctoral directory that will contain dissertation titles and other valuable and helpful information, and is devising new ways to reach out to CUSSW doctoral graduates.

Sue Matorin '66 will continue as the Newsletter Advisory Committee chair. The twice-yearly newsletter consistently highlights the School, our alumni/ae, and their achievements. **Carmen Cerio Belle '87**, who did such an excellent job for us this year, will again chair the Hall of Fame Committee. **Pat Mulvey '95**, who has chaired the Brown Bag Lunch Series for the past several years, will be the new chair of the Alumni/Student Relations Committee. Look for a new Peer Group Program from this committee, already known for its superb mentoring program. Nominating Committee Chair **Phyllis Harewood '52** completed her last ballot and is looking forward to enjoying more free time. Thanks for a job well done, Phyllis. Committee on School History Chair **Eric Stamm '84** is continuing to preserve

CUSSW history through videotaped interviews of CUSSW social work luminaries. Also continuing this year are the Alumni Association's Vice Presidents, **Alison Fogge '97** and **Eric Stamm '84**.

Under the direction of Assistant Dean and Director Shelly Butler, the Office of Development and Alumni Relations continues to contribute many hours to assist and support the Alumni Association with its many programs and events. The staff members, John Matthews, Jennifer March, Kristen Abbas, Vanessa Alarid, Alvah Reed, and Laura Guiterman work together to provide friendly and efficient assistance. Look for their telephone and email numbers, and other valuable information at the D+AR Website at

www.columbia.edu/cu/ssw/alumni.

As I enter this first year of my presidential term I would like to focus on the progress of the new building. It is very important to keep all lines of communication to the CUSSW and the broader Columbia community open and working and to ensure that the new building meets the needs of both groups. As a second goal, I want to continue the work Susan Nayowith began and help to increase new graduates' participation within the Association.

I look forward to *your* participation in the Alumni Association and to listening to your suggestions for improving it. Please write to me at the School or use my email address mebigham@aol.com. I promise to answer your letters and emails and to be responsive to your comments.

MaryEllen Bigham '95



FROM THE DEAN

by Sheila B. Kamerman '73DSW



Sheila B. Kamerman

September 11, 2001, was a defining moment for all of us, whether as New Yorkers or Americans from elsewhere in the country. On that Tuesday, New York experienced the most horrendous event in its history, an event that left thousands of innocent people dead or missing, victims of devastating acts of terrorism. Although the catastrophe's immediate impact was on lower Manhattan, the shock of the events has reverberated through the United States and the more than 60 nations, ranging from Antigua to Zimbabwe, whose citizens were visiting or working at the World Trade Center.

Immediately following the attacks, faculty and staff mobilized to help students and staff at the School and around the University. During the tragic days afterward, members of the CUSSW community, including many alumni/ae, extended their help to the needy and the bereft. Some stepped forward with contributions of money, blood, food, clothing, and supplies. CUSSW's many mental health professionals provided support and trauma counseling for individuals, groups, agency and organizational staff, and reached out to the University and New York City communities and beyond. The CUSSW family has been remarkable in its solidarity, support, and availability as it supplied aid to all who needed or wanted it.

We have all been profoundly moved by the extraordinary heroism of the firefighters, police, and emergency workers, the sustained efforts of the many volunteer doctors and nurses, and the courage of ordinary citizens. And we have been heartened by the incredible outpouring of offers of assistance – not only from within the School but also from faculty, students, and alumni/ae from other schools of social work, and from policy makers and researchers around the world.

We feel compassion for those with relatives and friends directly touched by the World Trade Center tragedy, and we are concerned for those children and adults trying to cope with the frightening television and newspaper images of it. In his September 19 message to the larger Columbia Community,

President George Rupp stated "I express deepest sympathy for the loved ones of the victims. Even those of us who have not lost close friends or family members still share in a profound sense of loss at the wanton destruction of this horrific assault. We in fact suffer with the victims and the mourners, the literal meaning of the compassion that we cannot but feel."

As a School noted for its ethnic, racial, religious, and national diversity, CUSSW has another important message to convey. We state unequivocally that the hatred of others for their differences, that very same hatred that inspired these events, is unacceptable—at the School, at the University, and in the profession. Moreover, we will not permit that hatred or the immediate shock of the catastrophe stemming from it to paralyze us, or interfere with our mission, even under the most trying circumstances. We will continue to plan for the future and design and implement important new initiatives.

In addition to finding new placements for students whose agencies were directly affected by the WTC disaster, we are reassuring students and their families about the safety of current placements, the University, and the surrounding neighborhood. Faculty members are incorporating the events and their consequences into course content and fieldwork. Advisors are helping students return to their studies, and faculty are helping agency staff and clients adjust to the implications of this new era.

As we move forward in our educational role, I would like to pay special note to some significant developments at the School:

Of the utmost importance, the work on the new building continues and we will have an update on developments in my next column. With the help and support of faculty and administrators, we have "recovered" from the renovations of the summer, which provided space for about 20 additional staff, including faculty and researchers.

We are proud to announce that CUSSW has been chosen by the Kresge Foundation to receive a \$500,000 Challenge Grant. This prestigious award will help the School attain its fundraising goals for the new building and create a sound financial base for the years ahead.

Associate Professor Neil Guterman has been awarded tenure. He is the fifth CUSSW faculty member this year to receive this honor.

Five new faculty members have joined the CUSSW family for fall 2001: Assistant Professors Marcia Carlson, Seana Golder, Wen Jui-Han, Sarah Lewis, and Susan Witte. Assistant Professor Vincent Guilamo-Ramos joined the faculty in spring 2001 and two more scholars are scheduled to join us in fall 2002. We welcome them and the sense of renewal they bring.

Our Alumni Association continues to play an active and influential role in the life of the School. Congratulations to new Association President Mary Ellen Bigham. I look forward to working with her, with Vice Presidents Alison Fogge and Eric Stamm, and with all of the new and old Board members.

Our Advisory Council continues its work as an important source of information and advice under the dynamic leadership of its chair, Donna Rosenthal. Donna herself has just become the new Columbia University Alumni Federation President.

Chaired by University Provost Jonathan Cole, the Search Committee for a new School of Social Work dean continues its work. Its 12 members include six from CUSSW—Irwin Garfinkel, who is on leave this year and has been replaced by Jane Waldfogel; Nabila El-Bassel; Denise Burnette; David Yam, doctoral student Theodore Fletcher, and myself. Also included are representatives from the fields of psychology, international and public affairs, anthropology, law, psychiatry, and public health. The Committee met regularly throughout the last academic year and will continue to meet this year until an outstanding candidate is identified and selected.

In June, Provost Cole and President Rupp asked me if I would serve as Interim Dean during the final months of the search. As a long-term member of the CUSSW family for 30 years – first as doctoral student, then as alumna, research staff, and faculty member, I was happy to say yes. I am proud to serve you this year, and to work closely with another CUSSW alumna, Interim Associate Dean Barbara Berkman '70DSW, and with the Alumni Association, its officers and members, the Advisory Council, and the President and Provost of the University. No one could have been prepared for what has just occurred in New York and no one can foresee the full implications for the School. But I am here to provide leadership during this difficult period. My major tasks are: to facilitate the transition from our previous outstanding dean, Ronald A. Feldman, to our next outstanding dean; to sustain the School in its role at the forefront of the social work education and the profession; and to aid the CUSSW family as it explores and prepares for a new future. I count on all of you for support and I look forward to working with you.

Sheila B. Kamerman '73 DSW
Interim Dean and Compton Foundation
Centennial Professor for the Prevention of
Children's and Youth Problems

NEW ENDOWMENTS AT THE SCHOOL OF SOCIAL WORK

In its ongoing efforts to build the Columbia University School of Social Work list of endowed scholarships, CUSSW is proud to make note of CUSSW alumni/ae and Friends who have chosen to help the next generations of social workers. Through the income generated by these endowments, tuition scholarships have been awarded to almost 90% of the CUSSW student body, amounting to a total of \$2.5 million in financial aid for the 2000-2001 academic year. Because of the nature of an endowment at Columbia University, some of the income is returned to the principal each year, enabling the scholarship to grow and produce yet more income in the decades to follow. Some scholarships established more than 75 years ago have increased to more than 10 times their original base. Scholarships can be established through current or future gifts, including bequests and life income gifts, and can be funded with cash, appreciated securities, and other means. Many people who may not be able to afford an outright gift, are surprised to find that they can make a substantial gift to the School through an annuity or a charitable remainder trust, benefit from the income during their lifetimes, and then have a scholarship established afterward.

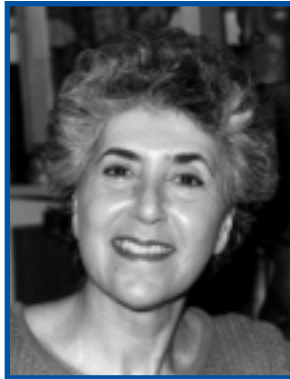
The family of **Esther Kalb Finkel** has established the **Esther Kalb Finkel, Class of 1949, Scholarship** in her memory. The income from the Finkel Scholarship will be used to assist needy Jewish CUSSW students interested in pursuing a social work career in family and children's services, with a preference going to a student who is also a mother and who lives in New York City. Her husband, Emanuel Finkel of Laguna Woods, CA, and her two children, Irene Landsberg of Fullerton, CA, and Ted Finkel of San Diego, CA, have founded the new scholarship to pay tribute to a dedicated social worker. A graduate of Hunter College, Mrs. Finkel received her MS from the School of Social Work in 1949. She was a founding member of the National Council of Jewish Women, Lakeville Section, and later president of NCJW. She served as psychiatric caseworker, supervisor, trainer, group leader and office manager for the Jewish Community Services of Long Island. She served on the Boards of the West Nassau Mental Health Association, the Mental Health Association of Nassau County, New Hyde Park Senior Citizens, Suffolk Jewish Community Council and Open Door. She received the NCJW's Hannah G. Solomon Award.



Esther Kalb Finkel

Ellen Sternbach, widow of the late **Oscar Sternbach** '46, has created a planned gift for a scholarship in both their names. In the aftermath of the 9/11 tragedy, she feels that now more than ever, social workers in the area of mental health are greatly needed. Therefore, when the fund is set up, the **Oscar and Ellen Sternbach Scholarship** will provide income for needy CUSSW students intending to pursue a career in mental health, with a preference going to a student interested in the psycho-analytical approach, in which both Dr. and Mrs. Sternbach had expertise. A lawyer in Austria before

arriving in the US as a refugee from the Holocaust, the late Dr. Sternbach taught at the New York Freudian Society and at IPTR, where he was the dean of training. According to Mrs. Sternbach, he was related to the Freud family on his mother's side. After graduation from the School of Social Work, Mr. Sternbach took a position at the Jewish Board of Guardians as a social worker, later became a supervisor, and then district director. As director, he organized a program for veterans leaving hospitals. He later served the Board, now the Jewish Board of Family and Children's Services, as a consultant while also conducting a successful private practice. Ellen Sternbach, graduate of the Pennsylvania School of Social Work and former director of social work of the Jewish Board of Guardians Child Development Center, chose to establish the scholarship at her husband's alma mater.



Ellen Sternbach

Through a bequest to the School of Social Work, **Edith Adler**, member of the CUSSW class of 1938, has established the new **Edith Adler Memorial Fund**. Because of the late Ms. Adler's lifelong interests, her family has asked that the annual income be used to provide partial tuition assistance for a needy CUSSW student. First preference is for a student with a field placement at one of the following locations: the Henry Street Settlement House; Northside Center for Child Development; NAACP, Legal Defense and Educational Fund, Inc.; and the Visiting Nurse Service of New York. If no needy student with a field placement at one of the above locations exists, the income may be used for tuition assistance for any other needy CUSSW student placed at a similar agency.



Edith Adler

Through a testamentary gift, **Edith Abraams** '44 has established the **Edith Abraams Scholarship Fund** for financial aid to needy students at the Columbia University School of Social Work with preference to students of the Jewish faith from Rhode Island or Massachusetts. The income of this fund may be used each year, or if not, may be used in a subsequent year or added to the principal of the fund.

Alumni/ae who choose to establish scholarships, either during their lifetimes or through their wills, continue to carry out the ideals and goals of their social work education and career. Creating a means for needy CUSSW students to complete their graduate social work education is a wonderful way for family and friends to celebrate the life and work of someone dear. The Columbia University School of Social Work is honored to work in partnership toward these beneficial and meaningful goals.

The First Lowenstein Fellows Celebrate at the Columbia Club



Six of the first recipients to receive the Lowenstein Loan Repayment Assistance Fellowship celebrated with Helen and Louis Lowenstein at the Columbia Club on June 14, 2001. The Fellowship was established by **Helen Lowenstein** '78 in order to address the serious problem faced by social work graduates today. Most CUSSW students graduate with an average of more than \$40,000 in loans, and then, if they wish to enter not-for-profit social work, take jobs paying an average of \$35,000 per year. The Lowenstein Program will help enable prospective and graduating CUSSW students to enter and remain in full-time, not-for-profit social work because of a lower level of indebtedness. Lowenstein Fellows demonstrate evidence of their commitment to social work through prior professional or voluntary activities related to the field and their intention to enter full-time, not-for-profit social work upon graduation. Helen Lowenstein is an active member of the CUSSW Advisory Council and its Curriculum Committee.



In Honor of the 10th Anniversary of the

V. BENJAMIN AND AGNES LOUARD SCHOLARSHIP

at the Columbia University School of Social Work

You are invited to join us at the
New York City Opera
for a performance of

PORGY AND BESS

by
GEORGE GERSHWIN AND DUBOSE HEYWARD

on

Saturday, March 9, 2002, 8:00 p.m.

Excellent 3rd Ring seats available

To purchase tickets,
please call (212) 854-7656 or
Email us at rd10@columbia.edu

PROCEEDS WILL BENEFIT
THE LOUARD SCHOLARSHIP FUND
FOR AFRICAN-AMERICAN STUDENTS
AT THE SCHOOL OF SOCIAL WORK

...SAVE THE DATE...SAVE THE DATE...SAVE THE DATE

The CUSSW Annual Alumni Conference will commemorate

The 100th Anniversary
of the
CUSSW Alumni Association



The 50th Anniversary of the Awarding
of the First Doctorate in Social Work
at CUSSW and in New York State

The celebration will be held at the Columbia Club on Thursday, April 11, 2002
MARK YOUR CALENDAR AND WATCH FOR YOUR INVITATION

NEWSLETTER ADVISORY COMMITTEE

Susan Matorin, Chair	Dona Hamilton Patricia Mulvey	Ethel James Williams* Washington, DC
Frances M. Curtis	Susan A. Nayowith	MaryEllen Bigham, ex officio
Alison Fogge	William O'Reilly	

* Corresponding Member

CUSSW ALUMNI/AE GATHER FOR FIRST WORKSHOP ON "SEPTEMBER 11th: THE SOCIAL WORK RESPONSE"

Assistant Dean and Director of Field Education Kathryn Conroy and Assistant Professor Tazuko Shibusawa conducted the first workshop for CUSSW alumni/ae on "September 11th: the Social Work Response." They presented an overview of the skills necessary to help clients, staff, colleagues, and community residents affected by the recent tragedies. More than 60 alumni/ae and friends attended the workshop, presented free through the Office of Development and Alumni Relations. Alumni/ae from classes ranging from 1943 through 2001 gathered to find out how they can help others through updating their own skills. Many referred to the volunteer work they were engaged in with victims and their families, ironworkers and retrieval crews at Ground Zero and other locations, school children, and agencies.

After the opening reception, Interim Associate Dean Barbara Berkman welcomed the alumni/ae and praised the remarkable efforts of the entire CUSSW community in the aftermath of the tragedy. Registration had very quickly exceeded the maximum permitted in the workshop and a waiting list had to be created. Additional workshops were scheduled for November 17th and December 4th.



Alumni/ae unable to attend the workshops may wish to log on to our Website at www.columbia.edu/cu/ssw/alumni. Click on "REBUILDING AFTER THE 9/11 TRAGEDY" and scroll down to the link for a "Comprehensive List of Trauma Resources." If you do not have access to a computer, please call the Office of Development and Alumni Relations at (212) 854-5181 to request a list of these resources. Please also watch the Website and your mail for notification about additional workshops, materials, and a workshop recording that will soon be available. (See article below.)

LETTERS FROM CUSSW ALUMNI/AE

Experiences of the WTC Tragedy

I just wanted to share with you what the Red Cross Chapter in Greenwich, CT, is doing regarding 9/11/01. I am a volunteer and the chair for mental health. We have had a Family and Community Support Center up and running for the first 10 days along with support groups being held by other agencies in town. Greenwich had 15 families immediately affected by this tragedy plus scores of others that had been witnesses to the destruction.

One young woman was next door to our chapter at the YWCA dropping her daughter off for daycare when she got a call from her husband via cell. From that moment on her life has totally changed. She was brought immediately to us by a bystander and with our help plus numerous friends she is coping with her loss. One element to this tragedy was that the parents and in-laws of the deceased were from Europe and could not get here for a week. Twenty relatives came to this young woman's side and are just beginning to depart back to Hong Kong, Vancouver, and London.

As a mental health professional, the reward in being able to do something has at least allowed us some relief from the grief. We have provided meals, helped with transportation and airfares, and momentarily been able to address the immediate crisis with monetary solutions. For the grief and the emptiness that these families are feeling, we can only support them and care for them as if they were our own. The Red Cross has done a phenomenal job in this disaster and will be up and running until the last person's needs have been met.

I wanted to share that a large part of my job is debriefing my colleagues, staff, and fellow mental health workers after a disaster. I feel it is one of the most important elements to being on a disaster and one that is sometimes not taken very seriously. If done correctly, it can contribute to giving a sense of closure for the person being debriefed. For many of the Red Cross workers being sent to Ground Zero, the debriefing is the only time that they may intimately relate the details of what they have been through to another party. When one returns home after a job such as this, family, friends, and well intentioned people just have no idea what we have all been through or experienced. Each of us involved in this will forever be changed. The mental health community has a huge responsibility in this crisis to see that each and every individual that comes our way is referred for help in some capacity.

Tangley DeLaney, '98

I work at the Family & Children's Agency, which has been offering free counseling, and I am also a volunteer with the Red Cross. I have done several debriefings with family members affected in our area (Fairfield County) and supervised the night shift emergency hotlines for all four nights that they operated. Organized on Sept 11, the hotline staffers began by taking names of people who wanted to donate blood. When the phone banks opened on the 12th, family members called their loved ones in as missing and registered them. We would later follow up and report information and begin counseling and referring. This week I will be leading two groups, one for parents whose children died in the World Trade Center and the other for spouses. We will continue to provide these services.

Candace Buckley '00

Another Greenwich alumna (name withheld by request) volunteered counseling services at the American Red Cross through the Greenwich Department of Social Services. She reports that Greenwich families had many losses and that many more have been deeply disturbed by the events. In particular, she has visited the elderly who have been very traumatized. "You talk to them about their fears, concerns and safety. Mostly you listen."

My job is at Planned Parenthood doing HIV counseling and education. I also run groups for Gilda's Club for people surviving and living with cancer. I volunteer at the Jacob Perlow Hospice at Beth Israel, and at a summer camp for children with AIDS. I lost someone in the 9/11 tragedy that I had known years ago and baby-sat for in college and felt so helpless. So, I walked into the Red Cross office at 66th and Amsterdam on Wednesday, September 12, and they sent me to the Hotel Pierre to counsel Cantor Fitzgerald families. The tragedy is that most of the people who worked for Cantor Fitzgerald were very young, many with young families, and many pregnant moms. After Tuesday, October 18th, I was sent to Ground Zero for grief counseling and debriefings of companies that worked with victims.

I'm happy to say that Planned Parenthood gave me a leave with full pay and told me they were "proud I was doing this work and representing them." My interest in counseling brought me to social work and my training at CUSSW prepared me for this. I find this kind of work energizing and rewarding.

Andrew Hearn '91

I began volunteering with the mental health division of the Red Cross five days after Sept 11, and have continued doing so ever since. I work whenever I can manage the time. My assignments thus far have included mental health counseling on the Missing Persons Hotline, doing mental health outreach in a large housing complex near Ground Zero, providing counseling for Search-and-Rescue workers at Ground Zero, and providing mental health backup at a Red Cross service center near Ground Zero. For anyone wishing to volunteer, here is what to do. (There is a need for more mental health personnel, especially social workers):

- 1) Call 718-923-5631 (Red Cross Mental Health Division) to discuss your interest.
- 2) Bring a copy of your NY State mental health license to Red Cross Headquarters at 165 Cadman Plaza in Brooklyn (first stop—High Street—on the independent A subway) and get a photo ID badge.
- 3) Go to the NY Mental Health volunteer office on the 3rd floor to get an assignment. You can usually choose what you want to do from what is available—coordinating it with the day and hours you can serve.
- 4) From then on, you can call the above number directly to get further assignments.

P.S. Don't expect things to work perfectly. There is much improvisation involved. Be flexible, keep your sense of humor, and use your wits to solve problems that occur. The Red Cross offers a free two-day course in mental health disaster counseling. Social workers who take it are then qualified to work for the Red Cross in any disaster, whether local or national. I am taking it in early November. It is offered frequently at the moment. Call (718) 923-5583 for dates of the training sessions, but feel free to call me at (212) 724-9855, for details about the activities. I will be happy to speak with you.

Myrna Lewis '65 '00 PhD

I completed my doctoral studies last spring and in September I was fortunate to take a position at NYU as Clinical Assistant Professor. The WTC disaster hit so many so hard. Along with other SSW colleagues, I was involved in crisis counseling to NYU students, many of whom were displaced from their dorms. I also participated in our volunteering crisis debriefings to workers from the Administration for Children's Services who were on Williams Street, near Ground Zero on September 11th. The work has extended to my private practice with several patients being traumatized by the crisis. I wish everyone well in these uncertain times.

Yvette Mardis '79 '01 PhD

continued on page 5

RECORDED PRESENTATION ON RESPONSE TO TRAUMA AVAILABLE SOON

In an effort to make materials on traumatic stress issues available to CUSSW graduates who cannot attend our workshops, the Office of Development and Alumni Relations recently recorded a video presentation entitled, "Helping Children in the Aftermath of a Traumatic Event." CUSSW faculty members, Associate Professor Ellen Lukens, and Assistant Professors Ellen DeVoe and Mary Sormanti prepared the material in response to the tragic events of September 11th. Assistant Dean and Director of the Office of Computing and Instructional Technology Ann McCann Oakley, Webmaster Sylvia Shultz, and Systems Analyst Ned Walsh provided the necessary technical expertise.

This presentation has been given before agencies, schools, and community and parent groups across New York City, but it will also be useful to individuals and groups outside the city where, in the wake of developing events, trauma also has been a concern. Although the focus is primarily on children

and their response to trauma, short sections on General Responses to Trauma and Loss, Adult Self-Care, Self-Assessment for Practitioners, and Professional Self-Care have been included, as well as a short list of references. While this presentation is not intended as a substitute for a professional training program, it is hoped it will provide a starting point for graduates who are beginning to witness the effects of traumatic stress.

Alumni/ae may wish to view this presentation with others in order to facilitate discussion. If you would like to be placed on the waiting list for a copy of this VHS presentation, or would like to host an alumni/ae gathering in your town, please email the office at ka270@columbia.edu or call the Office of Development and Alumni Relations at (212) 854-7656.



CUSSW ALUMNI ASSOCIATION INDUCTS NEW MEMBERS INTO THE HALL OF FAME

The CUSSW Alumni Association elected four new members to the Hall of Fame at the Alumni Association Reunion in May 2001. They were: **Edna Isabel Beveridge '52**, **Louis Levitt '51**, **Josephine Black Pesaresi '58**, **Barbara Silverstone '73DSW**, and **Ethel James Williams '49**.

Edna Isabel Beveridge worked for several years in Maine before relocating to Canada. She served first as director of administration and counseling at the Canadian National Institute for the Blind in Toronto, and then as director of the rehabilitation department in Vancouver. Currently writing a book about her life, she is dedicating it to all those who assisted her throughout the years.

Dr. Louis Levitt, teacher and professor emeritus at Yeshiva University's Wurzweiler School of Social Work, has been a consultant and expert witness for the Children's Rights Project of the American Civil Liberties Union and the Legal Aid Society in several landmark cases. He has also provided leadership and staff support for the IMPACT 97 conference that examined the consequences of cutbacks in fund-



Hall of Fame recipients, from l. to r., Josephine Black Pesaresi, Ethel James Williams, and Barbara Silverstone

ing for health and social services. Currently, Dr. Levitt is a member of the Social Policy Planning Council, NYC Chapter of NASW, and a member of the planning committee for the conference on "Achieving Excellent Health Care For All."

Josephine Black Pesaresi is currently a consultant coordinator for the Arizona Suicide Prevention Coalition, which works to establish statewide suicide prevention programs.

She is on the Advisory Board of the American Association of Suicidology and has lobbied on the federal, state and local levels. Ms. Pesaresi has helped individuals and groups through counseling and support groups, and has helped survivors of suicide advocate for greater awareness of the issues, mental health needs, and preventive efforts.

Dr. Barbara Silverstone is president and CEO of Lighthouse

International, a leading vision rehabilitation organization with international research and educational programs and a major provider of vision rehabilitation services in the New York region. Dr. Silverstone has also co-created the Fund for the Advancement of Social Services and has written a variety of publications dealing with both the elderly and the vision impaired. She has received many awards including the Distinguished Human Services Award from Yeshiva University and the Social Worker in Aging Distinguished Service Award from NASW-NYC Chapter.

Ethel James Williams is a noted public speaker on poverty, the pursuit of excellence, women's issues, and Black women in America's history. The State Department appointed her a member of the District of Columbia's Commission for International Women's Year - Decade for Women and she attended the National Women's Conference in Houston, Texas, as an alternate delegate. Ms. Williams currently serves as program consultant to the National Council of Negro Women.

Ronald V. Gallo '79 Joins Advisory Council

RONALD V. GALLO, president and CEO of the Rhode Island Foundation, one of the nation's largest community foundations, is the newest member appointed to the CUSSW Advisory Council. Prior to his coming to Providence, Dr. Gallo was the executive director of the Jessie Ball duPont Fund at Jacksonville, Florida and consultant to the Arthur D. Little

Foundation in Cambridge, Massachusetts. In his current work, he is especially interested in broadening community-based economic development, increasing access to quality health care for all families, and bringing stability and greater strength to the arts community.

Dr. Gallo holds a bachelor's degree in history and Asian studies from Connecticut College, a master's degree

in social work from the Columbia University School of Social Work, and master's and doctoral degrees in social policy studies from the Harvard University Graduate School of Education. At Harvard, he completed a dissertation on the connection between language preservation and economic development among the indigenous peoples of Oaxaca, Mexico.

KRESGE FOUNDATION GRANT

(Continued from page 1)

That is why the grant is a challenge grant—something more than a simple match. In order for the School of Social Work to actually receive the grant money, CUSSW must complete the balance of funding for the building's construction by the end of December 2001. The grant should serve as the catalyst for the School's development efforts, hopefully inspiring participation among all alumni/ae, but particularly among those who have not yet made a commitment to supporting the School. Through this means, all gifts will take on a new and major significance, both in amount and number, as the Kresge Foundation's mission gives special urgency to the final months of the School's capital campaign.

The Kresge Foundation's recognition of the School's historic contributions to social work education and of its critical requirement for better accommodations will give new impetus to the construction of CUSSW's new home, the first ever designed for its unique needs. With every graduate's assistance, the School will be able to strengthen significantly the fundraising infrastructure and alumni donor base of the School of Social Work, attain its fundraising goal for construction of a new physical facility and, subsequently accelerate and assure the educational leadership of CUSSW far into the future.

FIELD EDUCATION NOTES

Kathryn Conroy, Assistant Dean and Director of Field Education, assisted in the design of the Tuition Repayment Program for the NYC Administration on Children and Families. The program is for employees who pursue graduate social work studies.

Associate Director **Cheryl Franks '82 '01PhD** received a contract with the New York City Police Department to work with 600 police sergeants on issues relating to racial identity.

Mary Sawyer has been promoted to Manager and **Francisco Monterroso** is now Program Coordinator.

HONOR ROLL OF DONORS CORRECTION

Because of a University administrative error, **John Dabney '62**, was omitted from the Columbia University School of Social Work 2000-2001 Honor Roll of Donors. We are happy to acknowledge his generosity as a Benefactor and a member of the Mary Richmond Society.

ALUMNI/AE LETTERS (Continued from page 4)

I teach at Florida Gulf Coast University in Fort Myers, FL, and have volunteered with the Red Cross to provide crisis/grief counseling, if necessary. My social work students have been deeply distressed by this turn of events and we have spent a lot of class time processing it and trying to make some sense of all that has happened. I appreciate your providing information on the Web on these subjects.

Myra Marcus '75 '92DSW

I am a CUSSW alumna and social worker who uses a motorized wheelchair. On the morning of 9/11, I was on my way from Brooklyn to Manhattan for a day of job leads and interviews. I woke up feeling positive and ready "to move on" to a new job.

Traffic was heavy that morning. As the bus entered the Brooklyn Battery Tunnel at 8:45 AM, we heard sirens on the Brooklyn streets at the tunnel entrance and saw smoke. Little did my fellow tunnel commuters or I realize that the first plane had just hit the WTC. I know this was bad for everybody, but being disabled, the whole sense of being helpless and defenseless made it even worse. But I was lucky. Strangers carried my wheelchair to an empty tunnel tube where I could wheel myself. The end to my story is that on October 9, exactly 4 weeks later, I began to pick up my professional life where I had left off on that horrendous day in history.

I wish I could thank those people who were heroes. I would like to add that I am OK both mentally and physically and ever so grateful to be alive. You see, the bus was late that morning, and I was to be the first passenger off the bus. My destination was: 120 Broadway—one block from Ground Zero. My experience was described in an article entitled "The Disabled-Attacks Leave New Obstacles to Mobility," by Tamar Lewin in the *NYTimes*. I hope you will share my story with others. In the meantime, I hope to help those who were injured and suffered loss in the tragedy.

Caren Potoker '97

I am a CUSSW alumna, originally from New York City, who has been living in Paris for 30 years. There is a large American community here in Paris, profoundly affected by the events of September 11th. Even though we are far away from Ground Zero, we, too, can benefit from Critical Incident Stress Debriefing Skills to help our respective communities all over the world deal with this tragedy. Thank you for taking this matter into consideration.

Gaby Taub '67

In the early weeks, I worked out of the Red Cross's Amsterdam Ave—manning the desk, serving food and doing very little counseling. Then I was asked if I could do home visits—once or twice a week, I thought. You have to update your pass to work at ground zero, so I went to Cadman plaza in Brooklyn to get a green pass, my Red Cross ID, and my assignment. Then, I took the subway to Bowling Green and walked to the tip of Battery Park. Yesterday, I was in one of the apartment buildings there, working with folks who were displaced. Some had come back to live in that building, but were concerned about what they lost and about the clean up involved in returning. Some people said they could never return, but they came for the mail and their possessions. One young woman said she loved living there, but she could never come back, that she would always look at that site and know that friends were lost.

In the afternoon, I worked at the Marriott, next to the WTC; it was surreal. People were coming back a little, although most restaurants were closed. One worker said they saw their first jogger. My work consisted of informal talks with firefighters, police, and people working on the site, some since day one. In the Marriott, there's a Red Cross first aid station and a mental health station. They want you to go in and just sit down with the people and start to chat. Before you go in, you have to wash your shoes with high-powered hoses to prevent contaminants. The smell there was stronger than usual—I had to take a shower and then go back and wash my hair and all my clothes to get rid of it. Then it was back again to Battery Park City, the walk to the subway, and home. The exercise made up somewhat for the junk food—the candy bars, doughnuts, coffee, cookies and cakes provided all day long.

I felt OK, like I was helpful—I could be replaced by someone else, but they did seem to need volunteers. The phone number for mental health is (718) 923-5634. Many out-of-towners came in for two weeks to volunteer; their hotels were paid for by the Red Cross. Although special training is available and I intend to take it, my social work training is what enables me to feel comfortable and competent about what I'm doing even without any special training.

What I did was nothing out of the ordinary; there are lots of people down there doing extraordinary things. I will be going back on a regular basis.

Barbara Grodd '79



FROM THE 40s

Sam George Arcus '49 recently published his book *Deja Views of An Aging Orphan: Growing Up in the Hebrew National Orphan Home*. Mr. Arcus continues to be employed by the Pima Council on Aging in Tucson, Arizona, as the coordinator of the Long Term Care Ombudsman Program. He supervises volunteers monitoring the care provided to aged and vulnerable adults in nursing homes and assisted living centers.

Frances S. White '46, founding board member of PaNAMI Main Line, is also a founding member of PLAN (Planned Lifetime Assistance Network), a non-profit agency serving the mentally disabled and their families, in the Greater Philadelphia Area.

Ethel James Williams '49 has been honored on the Wall of Fame at the National Women's Hall of Fame in Seneca, New York. The National Association of Commissions for Women (NACW) arranged this tribute to Ms. Williams. She has also been invited to serve as a member of the District of Columbia Women's Health Initiative Advisory Board and the University of the District of Columbia's Social Work Advisory Committee.

FROM THE 50s

Tomi Itabashi '53, professor emeritus at Tohoku Fukushi University in Sendai, Japan, recently opened the Sendai Dementia Care Research and Training Center, a facility for elderly people suffering from dementia, in Japan.



Tomi Itabashi

Kei Maeda '57, professor of social work at the Japan Lutheran College, led a study tour of Japanese social work faculty and field instructors. She visited CUSSW in March.

Sylvia Rosenberg '58 hosted a brunch this past April for the former and current members of her mentoring groups. In 1996, Mrs. Rosenberg initiated the Mentoring Program for the CUSSW Alumni Association that has expanded to include almost 100 participants and 10 groups currently. Members of her groups include Alumni Association Vice President **Alison Fogge '97**, Mentoring Co-chairs **Maura Kilduff '97** and **John Smith '99**, and former Alumni Association Secretary **Norma Lopez-Eicher '96**.



Sylvia Rosenberg

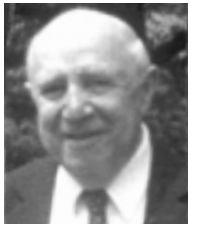
This past May, **Greta Singer '50** received the Second Annual Jane Addams Social Visionary Award 2001 for founding the social work program at Monmouth University in Long Branch New Jersey. Ms. Singer designed the Monmouth program to fulfill all requirements for and receive accreditation by CSWE.

Nat Yalowitz '56, president of the NORC (Naturally Occurring Retirement Communities) Supportive Services Center, Inc. in New York City, recently received a US HUD grant to set up NORC programs in Michigan, Illinois, and Maryland. NORC programs are comprehensive social and health service programs on sites where elderly residents live in intergenerational housing and communities.

FROM THE 60s

Nathan Handlin '65 is secretary of the Gerontology Advisory Council at the Rutgers University School of Social Work. He is also

a court appointed mediator, working in the local civil courts in NJ where he helps mediate disputes between litigants to avoid the need for court trials. He has served on the Citizens Advisory Committee of the Marlboro Township Board of Education.



Nathan Handlin

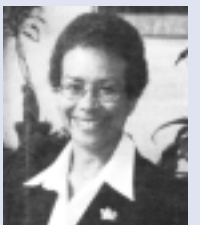


Carolyn A. Harley

Carolyn A. Harley '63 retired from the position of director of Social Service at Greater Harlem Nursing Home in New York. In August, Ms. Harley joined a nursing study tour under the supervision of the State University of New York at Stony Brook. The group went to St. Petersburg, Russia, where they met with medical personnel at local hospitals, and learned about the structure of the Russian health care delivery system.

FROM THE 70s

Darlyne Bailey '76, dean of the Mandel School of Applied Social Sciences at Case Western Reserve University, has been appointed dean and vice president for Academic Affairs at Columbia University's Teachers College.



Darlyne Bailey

Dr. Bailey was also awarded a full professorship by the Columbia University School of Social Work and will teach here. She was named a Woman of Influence by *Crain's Cleveland Business*, a Salzburg Seminar Fellow, and a 1994 W.K. Kellogg Foundation Fellow. She was also awarded the "Outstanding Teacher Award" in 1992 from the Mandel School. Two of Dr. Bailey's latest books are *Strategic Alliances Among Health*

continued on page 7

Alumni/ae Gather in Washington DC to Honor Ronald A. Feldman

Columbia University School of Social Work alumni/ae and friends gathered at the home of Charlotte and Peter Ehrenhaft in Washington, DC, on June 12, 2001, to honor Ronald A. Feldman as he stepped down from the CUSSW deanship. Charlotte K. Ehrenhaft '57 and her husband hosted a reception for more than 35 DC area residents who came to greet Mrs. Dina Feldman and the dean and to hear him speak. Among those attending were: Ruth Insel '46, Thora Frank '40, Ken Carpenter '50, Martine Baron '98, Gladstone Alleyne '74, Dalal Musa '98, Aracelis Francis '79, and Jessie Dowling Smith '45. The active DC area alumni/ae group meets regularly at their fellow graduates' homes.



Charlotte and Peter Ehrenhaft

New Alumni Association Pioneers Inducted

The Columbia University School of Social Work's Alumni Association recently inducted **Hyman Grossbard '37**, **Haskell Jacobs '42**, **Irving Miller '47 '61DSW**, and **Sister Mary Geraldine Tobia '85** into the Pioneers at the Alumni Association Reunion in May 2001.

Hyman Grossbard, a leading social work educator, was named professor emeritus upon his retirement from the Columbia University School of Social Work in 1973. During his professional career, he served as clinical director of the Hawthorne Cedar Knolls School and as member of many social service agency advisory boards. While an examiner for the New York City Board of Education, he assisted with the placement of candidates in social casework and supervisory positions at public schools.

Haskell Jacobs came to social work with an LLB degree in 1930 from Syracuse University College of Law and pioneered coordination of the legal and social work professions. He was chief of the policy coordination office of the Assistance Payments Administration of Social and Rehabilitation Service in the department of Health,

Education, and Welfare. While at HEW, he received two superior service awards.

Irving Miller, a leader in the field of group work practice, was highly regarded for his contributions to the visually handicapped, the aging, industrial social welfare and organizational theory. His expertise in social work supervision was widely recognized and in 1987, the Association for the Advancement of Social Work with Groups honored him with a Lifetime Achievement Award.



Prof. Irving Miller

Sister Mary Geraldine Tobia, a Sister of the Good Shepherd, was co-director and co-founder of the Center for Family Life in Sunset Park, which provides comprehensive neighborhood services to children, young people, and families. Sister Geraldine received the Ecumenical Woman of the Year Award from the Brooklyn Division of the Council of Churches and a Robin Hood Foundation Heroes Award.

continued from page 6

and Human Services Organizations: From Affiliations to Consolidations, co-authored with Kelly McNally Koney (Sage Publications) and *Managing Human Resources in the Human Services*, co-authored with Felice Davidson and Ellen Nutting, published by Oxford University Press this year.

Robert S. Berger '78 received a PhD in Clinical Social Work in January 2000 from the NYU Ehrenkranz School of Social Work. His dissertation, "A Study of the Self-Perception of Children with Familial Dysautonomia, the Severity of Their Familial Dysautonomia, and the Childrearing Attitudes of Their Parents," examined self-concept in children with a rare Ashkenazi Jewish genetic disorder. Dr. Berger is in private practice and is an adjunct assistant professor at NYU Ehrenkranz School of Social Work.

In honor of her work in representing crime victims in civil suits arising out of inadequate building security, negligent hiring, and negligent supervision, **Madeline Lee Bryer '74** was presented with a 2001 Women of Power and Influence Award from NOW-NYC this past May. Ms. Bryer worked as a certified social worker for nine years at Columbia Presbyterian Medical Center before receiving her law degree from Brooklyn Law School.

Betty J. Williams '73 was enrolled as a member of the Brooklyn Civil Court in January of 2001.

Terrie Williams' '77 book, *Stay Strong: Simple Life Lessons for Teens*, has been recently published and is now available from Scholastic.

FROM THE 80s

Richard M. Alperin '82 DSW was recently elected into the Social Work Academy of the National Academy of Practice as a Distinguished Practitioner. Dr. Alperin's paper, "Barriers to Intimacy: An Object

Relations Perspective," appeared in *Psychoanalytic Psychology*, Winter, 2001. Another of his papers (co-authored), "The Medea Complex in Psychoanalytic Thought," will appear in *Psychoanalysis and Psychotherapy*, Vol. 18 #2, 2001.

Debbi Gioia '81 recently obtained her PhD from the University of Southern California, Los Angeles. Her dissertation, "The Meaning of Work for Young Adults with Schizophrenia: A Mixed Method Study," was funded by NIMH. Dr. Gioia is currently an assistant professor at the University of Michigan School of Social Work.

Father **George B. Mulligan '86** has been appointed vice president for student affairs at Stonehill College in Easton, MA. Prior to his appointment, Fr. Mulligan served as assistant to the president of student affairs.

J.J. Van Name '84 is a professional actress out of the Philadelphia area performing with many companies but primarily with the Philadelphia Shakespeare Festival. Ms. Van Name occasionally does theatre outreach for inner city children in Philadelphia.

Belinda Housenbold Seiger '87 is currently a doctoral candidate at the Shirley Ehrenkranz School of Social Work at New York University. She is the proud mother of Zachary Ethan Seiger, born on October 13, 2000.

Lisabeth Wotherspoon '88 is a clinical social worker at Wentworth Douglass Hospital in Dover, NH. She provides a wide range of services to mothers in the Birth Center and trauma patients in the Emergency Department. Ms. Wotherspoon is also co-leader of a support group for people with AIDS, which has been meeting continuously since 1993.

FROM THE 90s

Maureen Hornung '92, faculty member and director of the Liberty Partnerships Program

at Bank Street College of Education, has been named the regional recipient of the Isuzu Afterschool Hero of the Year Award. Ms. Hornung is also one of the finalists for the National Afterschool Hero of the Year Award.

Stephen Knezek '96, author of *Secrets of a Successful Private Practice*, recently presented a workshop on "How to Build and Maintain a Private Practice" at the annual statewide NASW/CT Convention. Mr. Knezek, who is the State Liaison for the Private Practice Section of NASW for Connecticut and the membership chair for the Connecticut Society for Clinical Social Workers, currently works with children and adolescents in addition to his work as a practice building consultant.

The Death of an Amiable Child, a mystery book written by **Irene Marcuse '93**, is now available at bookstores.

Lionel H. Thompson, Jr. '98 was recently appointed as director for the Day Treatment Program at the Herschel Alt Westchester Day Treatment Center, a residential placement center for emotionally disturbed youngsters living in Westchester, NY.

Jennifer Di Noia '95 '00 PhD completed her dissertation "with distinction" in October 2000. Dr. Di Noia's dissertation is entitled "Patriarchy and Violence Against Women: A State Level Analysis."

FROM THE 2000s

Tamara Bennett '00, Jamel Burroughs '01 and **Suzanne Weidberg '01** recently co-authored an article with Madeleine Dale, former Director of CUSSW's Career Development Center, for *The New Social Worker* entitled "Your Summer Vacation - Or Is It?: The Value of Experiential Learning as Part of the New Social Worker's Career Campaign."

CUSSW Advisory Council Chair Named Federation President

DONNA ROSENTHAL '67, chair of the Columbia University School of Social Work Advisory Council, has been named president of the Columbia University Alumni Federation. The Federation serves as the umbrella organization for all the alumni/ae associations within the University. She will preside at the Federation's first luncheon on November 7. The guest speaker will be Columbia's new Board of Trustees Chair and the Commissioner of the National Basketball Association, David J. Stern '66L. Rosenthal also serves as executive vice chair of the National Jewish Center for Learning and Leadership.



TERRY MIZRAHI '66 NEW NASW PRESIDENT

by Susan Matorin '66

The New York City social work community joined together in June to honor Terry Mizrahi, 1966 CUSSW graduate, and the new National Association of Social Workers president. The celebration highlighted the accomplishments of a national health care policy leader whose vision and energy will help members confront an ever-changing professional climate.

Directing the event was Gerald Beallor, co-chair with Dr. Mizrahi and **Paul Kurzman '64** of the Health Care Policy and Practice Network. Other speakers included Dean Bogart Leashore; Robert Schachter, executive director of NYC Chapter of NASW; Alma Carten, chapter president; and myself, **Susan Matorin '66**, president of the Society of Social Work Leaders in Health Care and Dr.

Mizrahi's Columbia classmate. Speakers touched upon the new president's experience in community organization and interdisciplinary practice with physicians, and her research on changing social work department structures.

Shortly after this event, Dr. Mizrahi's Letter to the Editor was published in the June 10 issue of *The New York Times*. In it, she spoke of the inadequate care available to sufferers from Alzheimer's Disease and highlighted the absence of reimbursement for psychosocial treatment interventions. Terry Mizrahi's commitment to research and practice coupled with advocacy is a hallmark of a CUSSW graduate. We wish her well in her new role.



Terry Mizrahi '66

NEW CUSSW ALUMNI ASSOCIATION BOARD MEMBERS

Area I: CT, ME, MA, NH, RI, VT
Tangley Lloyd DeLaney '98

Area II: DE, NJ, NY State, PA
Nadia Ehrlich Finkelstein '54
Jean Paglia '95

Area III: Long Island, Westchester, NY
Dona Hamilton '75 '82 DSW

Area IV: Manhattan, Bronx, Staten Island, Queens, Brooklyn
Jane Bender '69 • Sarah Bober '00
Diane Borko '66 • Carolyn Greenberg '83
Yvette Mardis '79 • Dianne Morales '93
Penny Schwartz '78 • John Smith '99
Roschel Holland Stearns '90

Area V: DC, KY, PR, NC, WV, VI, VA, MD
Eric Lehot '95
Barbara Solt '67

Area VI: AL, FL, GA, LA, MS, TN, TX, SC
Margaret Domanski '96 PhD

Area VII: IN, MI, OH, WI
Mark Holter '90 '98 PhD

Area X: CA
Marshall Feldman '88

Area XI: Foreign
Ellen Amstutz '84

NOMINATING COMMITTEE

Jennifer Bigham '98 • Kathalynn Turner Davis '00
Lydia Diaz-Brown '96 • Carolyn Nannini Dolan '77
Meredith Hanson '87 • Dorothea Roberts '00

ALUMNI P•R•O•F•I•L•E

Bishop Jaime Soto '86 Cleric/Social Worker

By Patricia L. Mulvey '96

Bishop Jaime Soto's interest in community organizing and human services first surfaced when he was an undergraduate at St. John's Seminary College in California. After he was ordained in 1982, his mentors, Bishop Bill Johnson and Chancellor Michael Driscoll, both social workers, encouraged this interest. They approached the young priest, and asked him to consider pursuing a graduate degree in social work at a university on the East Coast.



Bishop Soto

Columbia University School of Social Work was his choice. Bishop Soto explained, "The reputation of Columbia's Social Administration track and the overall reputation of the University simplified and justified the choice. It was not only the value of the classroom environment; it was also the valuable contributions of my fellow students - learning from others' experience."

After graduation, Bishop Soto returned to Orange County, California, and was appointed Associate Director of Catholic Charities. California had just enacted the Immigration Control and Reform Act, changing the complexion of social agencies and Bishop Soto immersed himself in work with the immigrant community. "My entire education was put to the test developing a new program in a complicated, bureaucratic nightmarish environment! In a one-year period, we converted more than 5000 immigrant applications from illegal to legal status. This was the beginning of the Orange County Latino community becoming part of the mainstream and a significant turning point in the history of Southern California."

Bishop Soto is presently Auxiliary Bishop of Orange County and the pastoral leader of 1.1 million Catholics in a community of 2.6 million people. He believes that his CUSSW education taught him how to evaluate a situation fully. Using the skills he learned at Columbia, he works toward his goals—helping the church examine civic issues, keeping the church from becoming too insular, and enabling the church to partner with government and other civic groups. Parish-by-parish, he has helped his flock improve the quality of life for the entire community and has encouraged his priests to thrive in a multicultural environment through his own example. On the Boards of the United Way, Catholic Charities, and St. Vincent De Paul, he often acts as a broker between the diocese and the social service agencies. "I'm blessed to be working with the young adult immigrant population between ages 18 and 30, especially those who may be disoriented, out-of-sorts, or without elder role models. The ability to help them create a social framework is fascinating."

Richard Cloward, CUSSW Professor and 1950 Alumnus, Dies at 74

Friends and Colleagues Gather to Celebrate his Life



Richard Cloward

Richard Cloward, a professor at Columbia's School of Social Work who was a driving force behind the 1993 Motor Voter Act, died on Sunday, August 20, 2001, in New York City at the age of 74. The cause of death was lung cancer. A distinguished author and social activist, he was a member of the School of Social Work faculty for 47 years. In 1982, Cloward co-founded Human SERVE (Service Employees Registration and Voter Education) with his wife, Frances Fox Piven, which established motor-voter programs in select states as precedents for the federal legislation.

In advocating for the passage of the Motor Voter Act in 1992, Cloward told *The New York Times*, "The Civil Rights Act of 1965 stopped government from preventing people from registering to vote, and this legislation goes the final step by imposing on government an affirmative obligation to register the eligible electorate." Cloward was a catalyst in numerous protest movements on behalf of the poor. In 1966, he co-founded the National Welfare Rights Organization, which aimed to federalize Aid to Families with Dependent Children (AFDC) by building local welfare rolls.

In 1988 he published, *Why Americans Don't Vote: And Why Politicians Want it That Way* (Beacon), a work co-authored with Dr. Piven, Distinguished Professor of Political Science at the City University of New York. The book is a history of efforts to streamline the nation's electoral processes. The authors concluded that political parties would rather discourage voters who oppose their candidates than encourage voters who support them, but they predicted non-voters would eventually return to the voting booth.

Cloward published numerous books, monographs and articles, including *Poor People's Movements: Why they Succeed, How they Fail* (Pantheon, 1977), and *The Breaking of the American Social Compact*, both co-authored with Piven (New Press, 1997). Cloward and Piven also co-authored *Regulating the Poor: The Functions of Public Welfare* (Pantheon, 1971), which was listed among the 40 Most Notable Books by the

American Library Association.

Cloward was born on Christmas Day, 1926, in Rochester, NY. He earned his bachelor's degree from the University of Rochester in 1949, before getting a master's in social work from the Columbia University School of Social Work in 1950 and a doctorate in sociology at Columbia in 1958. He was an ensign in the US Navy in 1944-46 and a First Lieutenant in the US Army in 1951-1954. After serving as a group work supervisor in Pittsburgh and a social worker in an army prison in New Cumberland, PA, Cloward became an assistant professor at Columbia's School of Social Work in 1954. He also had visiting posts at the Hebrew University, the University of Amsterdam, the University of California, Santa Barbara, and Arizona State University.

Survivors are his wife, Dr. Piven, a daughter, Leslie Diamond of Morristown, NJ, and his sons, Kevin Cloward of Cincinnati, Ohio, and Keith Cloward of Philadelphia, PA, and four grandchildren. Funeral services were private.

On September 20, 2001, more than 500 professional colleagues, fellow alumni/ae, family, and friends gathered together at the CUNY Graduate Center in New York City to celebrate his life and to honor his work during almost half a century of political change and tumult in America. Distinguished speakers reflected on Cloward's work as an activist and scholar in the anti-poverty program, the national welfare rights movement, and Human Serve voter registration. The closing reception brought together hundreds of people of all ages who were influenced by Cloward's vision, determination, and beliefs in finding solutions to social problems.

Among his many honors were the Significant Lifetime Achievement Award in Social Work Education from CSWE; the Lifetime Achievement Award from NASW; the Herman Stein Award for Excellence in Social Work Education; and the Tides Foundation Award for Distinguished Public Service.

ALUMNI ASSOCIATION REUNION A GREAT SUCCESS

The CUSSW Alumni Association held its annual conference on Thursday, May 10, 2001, at Columbia University's Faculty House. Titled "Social Work: A Celebration of the Profession," the Conference was a reunion/networking event that provided an opportunity for alumni/ae to recognize and rejoice in the value of social work and the ever expanding roles and opportunities of the profession. Included in this year's program were the induction of the 2001 award recipients into the CUSSW Hall of Fame and Pioneers (see separate articles in this issue) and the Golden and Silver Anniversary Class Reunions.

The Golden Anniversary Class, co-chaired by **Georgia Parsons Brauer '51** and **Rosa Perla Resnick '51**, honored **Herman Stein '41 '58DSW** and **Joseph L. Vigilante '51 '68DSW** at the annual event.

A prominent graduate of CUSSW, Dr. Stein taught at the School for sixteen years, served as the director of its Research Center and was appointed dean elect in the late sixties. At Case Western Reserve University, he was appointed university professor, served as dean of the School of Applied Social Sciences and subsequently as provost. He was one of only 11 people to have received its highest honor, the University Medal, from Case Western Reserve University, where he is now professor emeritus and provost emeritus. He has also been awarded the Rene Sand Award from the International Council on Social Welfare and the Katherine A. Kendall Award from the International Association of Schools of Social Work for outstanding contributions to international social work education. He has consulted for the American Joint Distribution Committee and for the United Nations Children's Fund, and UNICEF, among other

organizations. At the CUSSW Centennial Celebration, he was one of the first graduates to be inducted into the Hall of Fame for his achievements in social work education, international relief and refugee programs.



Herman Stein, Alfred Kahn, and Joseph Vigilante

Dr. Vigilante served as dean and university professor at the Adelphi University School of Social Work, and has taught at the New School of Social Research, Smith College, Rutgers University, and Yeshiva University. A preeminent scholar in the field of mental health, Dr. Vigilante has edited, authored, co-edited and co-authored many publications and was editor of the *Encyclopedia of Social Work*. He has been a very active graduate of the School, participating in several Columbia University School of Social Work Alumni Conferences and other School and Alumni events. In recognition of his leadership in the profession, Dr. Vigilante has been the recipient of awards from the governors of New York and Vermont.

CUSSW Professor **Sheila Akabas** was chosen as class honoree by the Silver Anniversary Class, whose co-chairs were **Steven Boss '76** and **Sonya Rhodes '66 '76DSW**. Dr. Akabas's research continues to

make a significant impact upon the delivery of social services to workers, as well as in the areas of human resource supervision, and social policy. Among her many publications are *Labor and Industrial Settings* (co-author), and *Sites for Social Work Practice and Mental Health Care in the World of Work*. Currently on the presses is *Occupational Social Work: A Field of Practice*. She has published 80 works relevant to her area of expertise, has held 14 governmental and related appointments, and served as principal investigator for the National Institute of Drug Abuse and the United States Department of Labor.

Dean Emeritus **Ronald A. Feldman** was honored by the Alumni Association for his enormous accomplishments on behalf of the School of Social Work during his 15 years as dean. **Laura Guiterman Freund**, CUSSW archivist and historian, was honored for her commitment and dedication to the alumni/ae of CUSSW. **Sister Mary Paul Janchill '75DSW**, Clinical Director for the Center for Family Life, was the keynote speaker for the evening and was introduced by CUSSW Assistant Dean and Director of Field Education **Kathryn Conroy**. Sister Mary Paul was also one of the very first alumni/ae to be inducted into the Hall of Fame during the School's Centennial Celebration. She received the award for her achievements in community service, family services, and policy and child welfare.

The 2000-2001 Conference Planning Committee was co-chaired by **Chuck Katze '58** and **Florentina Flamm '92**. Committee members included **Susan Nayowith '84**, **Carmen Cerio Belle '87**, **Estelle Schutzman '84DSW**, **Jean Charles '72**, **Benjamin Greenspan '74**, **Jean Paglia '95**, **MaryEllen Bigham '95**, **Roschel Holland Stearns '90**, **Betsy Naylor '68**, and **Rebecca Cauman '41**.



Voted Professor of the Year by CUSSW students, Professor **Sheila Akabas** was presented with a plaque at a Gala in Low Memorial Library Rotunda. Professor Akabas also received a grant from the Philip Morris Companies for a project that explores innovative approaches to mitigating the negative workplace consequences of domestic violence.

Helen Rehr-Ruth Fizdale Professor of Health and Mental Health **Barbara Berkman** has been appointed CUSSW Interim Associate Dean for the 2001-02 Academic Year. Dr. Berkman has recently been awarded an \$825,000 grant for further work on the Hartford Foundation's program aimed at strengthening geriatric social work through faculty development and network building.

Dean Emeritus **Ronald A. Feldman**, Ottman Centennial Professor for the Advancement of Social Work Education, presented a paper titled "Antisocial Behavior: Measurement Issues in Group Treatment" at the 3rd International Congress on Social Work in Health and Mental Health in Tampere, Finland this past July. He also presented a paper in Turkey at the 12th Biennial International Symposium of the Interuniversity Consortium for International Social Development titled "Social Work Values as Determinants of Success and Failure in International Social Development." Dean Feldman has recently been appointed to the editorial board of *The Electronic Journal of Social Work*.

Professor **Irwin Garfinkel**, Mitchell I. Ginsberg Professor of Contemporary Urban Problems, co-directed a study that was part of the multi-year "Fragile Families and Child Well-being" research project. The project provides reliable data for policymakers as they address welfare reform at the state and national levels. He is also a visiting fellow this year at the Center for Advanced Study in Behavioral Sciences and will be writing a book on the welfare state.

Interim Dean **Sheila B. Kamerman**, Compton Foundation Centennial Professor for the Prevention of Children's and Youth Problems, testified before the US Senate Committee on Health, Education, Labor and Pensions regarding international developments in early childhood education and care, both policies and programs. She also participated in an expert meeting on early childhood and family support programs in Vietnam sponsored by UNESCO and the Vietnam government. Together with the Institute of Child and Family Policy, Associate Professors **Jane Waldfogel** and **Marcia Meyers**, and Dean Kamerman received a \$550,000 grant from the John D. and Catherine T. MacArthur Foundation in support of research under the working group on Early Childhood Care and Education.

Dean Kamerman and Professor Emeritus **Alfred J. Kahn** received a \$306,000 grant from the William T. Grant Foundation for further work on their Clearinghouse for

International Developments in Child, Youth and Family Policies. The grant focuses special attention upon the needs of youths and develops a more extensive dissemination and communications strategy.

At the February 2001 CSWE Annual Program Meeting Professor Emeritus **Alfred J. Kahn** received a Lifetime Achievement Award from the Policy and Practice Group, and the late Professor **Richard Cloward** received a Lifetime Achievement Award. Presentations were given by: **Barbara Berkman, Grace Christ, Kathryn Conroy, Cheryl Franks, Peter Marimaldi, Claudia Moreno, Steven Onken, Karun Singh, Mary Sormanti, Marianne Yoshioka, Tazuko Shibusawa, Helene Jackson, Mimi Chapman, and Susan Oppenheim.**

The plenary session speech at the 3rd International Conference on Social Work in Health and Mental Health will be delivered by Musher Professor of Social Work **Edward Mullen.**

Associate Professor **Grace Christ** received the Research Award of the National Hospice and Palliative Care Organization. She has also been appointed to the Institute of Medicine's Committee on Care for Children Who Die and Their Families, and is chairperson of the Behavioral Research Center Advisory Group for the National American Cancer Society. Dr. Christ was recently awarded an additional grant from the Open Society Institute to provide \$154,000 for a program to promote social work career development awards for the care of dying individuals.

Associate Professor **Neil Guterman** has been promoted to tenure beginning this academic year. He recently received a grant from New York Foundling Hospital to support research concerning empowerment-based early home visitation.

Ellen Lukens was promoted to Associate Professor in July.

Professor **Waldfogel** co-authored the survey "Balancing the Needs of Families and Employers," which was commissioned by the US Department of Labor. Her book, *The Future of Child Protection: How to Break the Cycle of Abuse and Neglect*, has now been published in paperback by Harvard University Press.

In conjunction with her forthcoming designation of Hartford Foundation Faculty Scholar, Assistant Professor **Tazuko Shibusawa** was awarded a two-year \$100,000 grant.

Assistant Professor **Richard Francoeur** has been selected as one of eight recipients of an Open Society Institute Social Work Leadership Development Award. Funding is for a two-year period.

The Elena Mederos Award for outstanding service to the Latino Community was

awarded to Assistant Professor **Claudia Moreno.** In conjunction with this award, Professor Moreno received recognition from the US House of Representatives and a proclamation from the mayor of Union City, NJ.

Assistant Professor **Steven Onken's** paper, "People with Psychiatric Impairments Define a Recovery Facilitating Community: Informing Practice through Grounded Theory Development using Concept Mapping Methodology," was accepted for the January 2002 Society for Social Work Research Annual Conference, San Diego California. Dr. Onken is the Principal Investigator for "Mental Health Recovery: What Helps and What Hinders?," a National Research Project for the Development of Recovery Facilitating System Performance Indicators.

Columbia University's Human Subjects Review Committee has appointed Assistant Professor **Jeanne Rivard** as an alternate member.

Assistant Professor **Mary Sormanti** received final approval for NIMH funding of an RO3 proposal titled "HIV Risk Among Older Abused Women Seeking Emergency Care."

NEW CUSSW FACULTY

Assistant Professor **Marcia J. Carlson** concentrates her professional career in family structure and parenting, child and adolescent well being, social policy, poverty and inequality, and father involvement. Dr. Carlson has been a presenter at professional meetings for groups including the Society for Research in Child Development and the Populations Association of America.

Assistant Professor **Seana Golder's** current research project, funded by a NIDA dissertation grant, centers around women's substance use and lawbreaking behavior. Other professional interests of Dr. Golder's include women's involvement in the criminal justice system, women and high-risk behavior, and U.S. drug policy.

Assistant Professor **Wen-Jui Han** concentrates on social welfare policy with an emphasis on children and families. Her current research involves the effect of maternal employment and child care on children's later outcomes and the effects of the Family and Medical Leave Act (FMLA) on men's and women's leave-taking usage.

Assistant Professor **Susan Witte** is the associate director of the CUSSW Social Intervention Group (SIG). Dr. Witte's practice experience includes direct practice, community organization, and administration work in the areas of HIV/AIDS and adult and sexual violence.

Assistant Professor **Sarah Lewis** focuses her career on health behavior, HIV/AIDS, and crisis intervention. Her current research includes HIV risk reduction, program evaluation and technology transfer.

TRIBUTE TO DEAN RONALD A. FELDMAN AT LINCOLN CENTER

Hundreds attended a gala reception at Lincoln Center's Kaplan Penthouse to honor Ronald A. Feldman for his 15 years as dean of the Columbia University School of Social Work. Tributes, accolades, songs and jokes enlivened the proceedings as faculty, administrative staff, alumni/ae, friends and family joined in celebrating Dean Feldman's remarkable achievements.

President George Rupp, Provost Jonathan Cole, Trustee Emerita Maureen A. Cogan '77, Associate Dean Peg Hess, and CUSSW Advisory Council Chair Donna M. Rosenthal '67 honored Dean Feldman. Proclamations from federal,



Provost Jonathan Cole and Dean Ronald A. Feldman

state, and local officials lined the walls of the penthouse. Highlights included tributes to Dina Feldman from the School of Social Work and her husband, and a presentation to the dean of a Tiffany watch. A performance of "You're the Dean," by the Development Divas Plus One, was led by co-chairs Barbara Grodd '79 and Carole Chinn Tjoa '68, with a solo introduction by Kathalynn Davis '00. Music was contributed by pianist Rory M. Butler. The CUSSW Development Committee spearheaded the benefit, with underwriting for the event provided through the generosity of alumni/ae and friends, including Sylvia Rosenberg '58, Monika Heimbold '89, Lissa Goldberg '83, Barbara Grodd '79, Kathalynn Davis '00, and Brenda Gallagher '97.



Dina and Ronald Feldman

Dean Feldman's many friends and admirers listed congratulatory messages in the Tribute Journal. All profits from the event and the Journal were dedicated to the School of Social Work's new building. Dean Emeritus Feldman, Ottman Centennial Professor for the Advancement of Social Work Education, is currently on sabbatical writing a book and will return to the faculty next fall as the School of Social Work's director of the Center for the Study of Social Work Practice.



Donna Rosenthal, Barbara Grodd, Bill O'Reilly, Sylvia Rosenberg.

WILLIAM O'REILLY '71SSW RECEIVES THE COLUMBIA UNIVERSITY ALUMNI MEDAL

Photo: Joe Pineiro

WILLIAM O'REILLY '71 was one of ten Columbians to receive the Columbia University Alumni Medal for service to their alma mater. It was awarded in May at the annual Commencement Luncheon, hosted by President George Rupp. O'Reilly has provided over 30 years of service to the Columbia University School of Social Work.



l. to r.: President George Rupp, William O'Reilly, Alumni Federation President Bernard Sunshine

As president of the Alumni Association from 1995 to 1997, Bill O'Reilly spearheaded a widespread survey of alumni and the first Alumni/ae Directory for the School of Social Work with an alphabetized listing of over 10,000 alumni in 50 states and more than 60 countries. As chair of the School of Social Work's first Hall of Fame Committee, he joined with others in selecting the first recipients of the esteemed Hall of Fame Awards during the Centennial Celebration. Bill also served as a member of the Centennial Planning Committee and as chair of one of the Centennial workshops.

During many years as an active Alumni Association member, he served on the Board of Directors, and as chair of the Newsletter Committee, the Annual Alumni Conference Committee, and the Child Welfare Committee. While chair of the Newsletter Committee, he launched an upgrading of the 75-year old *Alumni Newsletter*, bringing both the format and the content to a level widely acknowledged to be among the highest among school newsletters.

He is currently a member of the School of Social Work's Advisory Council and its Development Committee, and also chairs the Council's Nominating Committee. Bill's professional work is at the Institute for Student Achievement where he is director of Regional Development.

The Paige E. Cook Institute on Cultural Diversity Presents Training Conference

The Paige E. Cook Institute on Cultural Diversity presented a training conference focusing on "Treating Substance Abuse in Families: a Cultural Perspective," on March 21, 2001, at District Council 37 in New York City. Proceeds from the yearly conference and additional donations benefit the Paige E. Cook Jr. Scholarship Fund, established at the Columbia University School of Social Work in 1995 in memory of Paige Cook, a distinguished 1974 graduate of the School, and

former Director of Social Services at DC 37. The Fund provides a partial scholarship, awarded on the basis of excellence, with preference to a student of African ancestry and/or someone with a career interest in the areas of Cook's work—substance abuse, world of work, men's issues, cross-cultural issues, and clinical practice.

"The mission of the Institute is to continue Paige Cook's vision in enlightening and advocating the multi-layered

issues of cultural diversity in the workplace and treatment environments." Among those participating in the conference planning and program were: Robert Terruso '73, Director of DC 37's Personal Service Unit; Gay Hartigan '75, COO of Liberty Management Group, Inc.; Cheryl Franks '82 '01PhD, CUSSW Associate Director of Field Education; Jeffrey Diaz '81, Director of Corporate and Industrial Programs, Cornell University Weill Medical College; and Samuel Aymer.

CUSSW ASSOCIATE DEAN PEG HESS STEPS DOWN

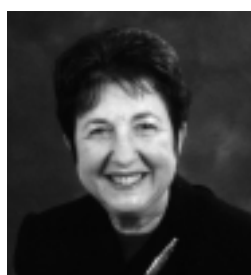
Barbara Berkman Named CUSSW Interim Associate Dean

Associate Dean Peg Hess has stepped down from her position at the School of Social Work to take a leave of absence. She will be spending the next year in Aiken, South Carolina, with her husband, who has taken a parish as minister there. Dr. Barbara Berkman, Helen Rehr-Ruth Fizedale Professor of Health and Mental Health at the Columbia University School of Social Work, and adjunct professor, Department of Community and Preventive Medicine, Mount Sinai School of Medicine in New York, has been appointed interim associate dean of the School of Social Work. She was formerly the director of the Ruth D. and Archie A. Abrams Interdisciplinary Research Program at Massachusetts General Hospital in Boston and the associate director of the Geriatric Education Center in the Division of Aging at Harvard Medical School.

Dr. Berkman received her MA from the University of Chicago School of Social Service Administration and her doctorate from CUSSW in 1970. She then accepted a post-doctoral Kellogg fellowship to study geriatric health care service delivery. She has directed 23 federally and foundation supported research projects focusing on issues in geriatric care, and is currently principal investigator and director of the John A. Hartford Foundation's Geriatric Social Work Faculty Scholars Program.



Peg Hess and Family



Barbara Berkman
Interim
Associate Dean

Dr. Berkman has received many awards primarily because of her research and policy efforts in health care and gerontology. In 1986, she became the first recipient of the Edith Abbott Distinguished Alumni Award of the University of Chicago School of Social Service Administration. In 1987, she received the Greatest Contribution to Practice Award from the Massachusetts Chapter of the National Association of Social Workers. She was also given the Hyman J. Weiner Award for Distinguished Scholarship Contributing to Health Care Practice and Administration from the Society for Hospital Social Work Directors of the American Hospital Association and was named a Distinguished Practitioner of the National Academy of Practice in Social Work. In 1994, Dr. Berkman was honored by NASW with the Ruth Knee/Milton Wittman Award for Outstanding Achievement in Health/Mental Health Policy.

Dr. Berkman's professional contribution to the knowledge base of social work in geriatric health care is evidenced in her publications, which include books, chapters, and over 100 articles. In recognition of her research in social work and health care, she has been named a fellow of the Gerontological Society of America and of the New York Academy of Medicine.

NEWS OF THE ADMINISTRATION

Kimberley Heilig received a \$101,000 grant to continue the Retired Faculty Initiative.

In July 2001, **Ann McCann Oakley** was promoted to the position of Assistant Dean and Director for the Office of Computing and Instructional Technology.

Tekena Abel has recently joined the Faculty Support Center as the new Adjunct Faculty Assistant. Ms. Abel will work primarily with providing course work and office support for adjunct faculty.

Gretchen Borges has been named coordinator of the CUSSW Doctoral Program. She also edited recent additions to the *Collected Writings of Mr. Albert Musher*. Mr. Musher is founder of the Musher Program at the School of Social Work.

School of Social Work

CUSSW RESPONSE

(Continued from page 1)

were advised to direct their volunteer time to the agencies at which they were already placed.

■ Based on information the School has just begun to receive from CUSSW alumni/ae, they have volunteered in the following ways:

- As certified social workers and mental health professionals, they have provided their services to the Red Cross, the Salvation Army and other agencies, schools, hospitals, churches, and synagogues; many took leaves from regular employment or left retirement to serve.
- They volunteered as administrators, counselors, and organizers at crisis stations set up at the Red Cross, locations in lower Manhattan, and their neighborhoods.
- Some have provided mental health services through Employee Assistance Programs for the Port Authority, for other New York City government and administrative agencies, and for companies located near the World Trade Center and/or with employees connected to the victims.
- Through skills workshops on post-traumatic stress and grief counseling given by the School,

they are providing assistance to victims' families and friends within and outside New York City—on Long Island, in Westchester County, and in New Jersey.

- Volunteers have been asked to see clients at AFL-CIO NYC unions who need treatment for one or more appointments, free or for a low fee.

The amount of help provided on a voluntary basis by the CUSSW family has been extraordinary. Continuing projects include the following:

- Columbia University's Office of Human Resources has requested CUSSW clinical faculty to facilitate Brown Bag sessions on "Coping Support for Employees." Eight sessions were held in October, with sessions scheduled for November and December as well. These sessions for Columbia employees, are designed to give them an opportunity to share experiences, identify stress reactions to the tragedy, discuss ways to deal with stress, and to provide information about additional resources.
- Two special workshops will be held for CUSSW alumni/ae on "September 11th: the Social Work Response." The first on October 30th at 6:15 p.m. is

already fully booked. Registration is still going on for the second, to be held on November 17th. Please watch the Web and your mail for notification about additional workshops, available materials, and a recording currently in process.

- Materials on posttraumatic stress are available through the School's and the Alumni/ae Web sites for downloading and/or printing. Plans are being made for additional materials that will be available through the mail, as well. A Power Point recording, with faculty voiceovers, will soon be available to alumni/ae for their use. The recording will deal with responses to trauma from adults, children, and oneself.

Everyone's hearts and thoughts go out to those with relatives and friends directly touched by the World Trade Center tragedy, and its aftermath of anxiety and sadness. New Yorkers and all Americans know that lower Manhattan will be rebuilt, although reconstructing the physical infrastructure may be a simpler task than recovering from the emotional and psychological destitution. Those in the CUSSW community know also, that the School will be there helping, as it has for 103 years.

Center for Intervention and Prevention Research on HIV and Drug Abuse Established at CUSSW

The Columbia University School of Social Work has established the Center for Intervention and Prevention Research on HIV and Drug Abuse through a five-year, \$2.1 million grant from the National Institute on Drug Abuse (NIDA). The Center seeks to conduct intervention and prevention research and faculty training to combat drug addiction and HIV.

"Working in drug treatment programs, welfare agencies and communities, social workers are on the front lines in the fight against drug abuse and HIV," said Nabila El-Bassel, a Columbia University social work professor who serves as the Center's director. "The field of social work has a strong commitment to research focused on highly vulnerable and disadvantaged populations. The Center will merge these research and delivery components to better combat several of our country's contemporary social problems."

Columbia is the nation's second university to receive a NIDA grant to develop a research and training infrastructure to battle drug abuse and HIV. Washington University in St. Louis was the first.

"Training in social work research is well-suited to design and test effective intervention and prevention models to reduce drug abuse and HIV and to increase the spread of effective interventions to drug treatment programs and communities," said El-Bassel.

Mary McKay, Co-Director of the Center, said, "Social work researchers target factors that predict substance abuse and HIV risk by examining not only individual behavior, but also, interactions between individuals and their environment. The new Center will be a tremendous asset in enhancing this approach."

Kamerman's co-authored works with Kahn include *Starting Right: How America Neglects Its Youngest Children and What We Can Do About It* (Oxford), *Family Change and Family Policies in Britain, Canada, New Zealand and the United States* (Oxford), and *Big Cities in the Welfare Transition* (Cross-National Studies Research Program).

During Feldman's deanship, the school created 10 endowed professorships, increased its endowment from \$8 million to \$57 million and raised the amount of financial aid available to its students to more than \$2 million annually. In 1997, the School of Social Work established a formal working relationship with the United Nations, the only American school of social work to do so. Under this arrangement, the United Nations and the School of Social Work engage in mutually beneficial programs of training and research.

After a one-year sabbatical, Feldman will return to the School of Social Work faculty as the Ruth Harris Ottman Centennial Professor for the Advancement of Social Work Education and as the director of the Center for the Study of Social Work Practice. The center is a joint enterprise of the School of Social Work and the Jewish Board of Family and Children's Services.

S. KAMERMAN NAMED

(Continued from page 1)

"This is one of leading schools of social work in the country," said Kamerman. "As interim dean, I will be in a position to build a solid platform for the next dean by working on the major tasks currently confronting the school. I hope to move the school forward in planning the new building, recruiting new faculty, exploring curricular needs, and supporting junior faculty and students."

In 2002, the school will begin construction of a \$64 million, 115,000 square ft. facility, which will be located on Amsterdam Avenue between 121st and 122nd Streets. Scheduled for completion in Fall 2004, the facility will be the first building in the school's history designed expressly for professional social work education. It will include electronic classrooms, seminar rooms, a multimedia center, a social work library and computer labs. Since its inception in 1898, the school has had five locations, including the Carnegie Mansion, located on Fifth Avenue at 91st Street.

Kamerman is director of the University's Institute for Child and Family Policy, an inter-disciplinary initiative designed to identify and address fundamental problems in the formulation, analysis, implementation, and evaluation of social policies toward children and families that are currently intractable.

In addition, she and Social Work Professor Emeritus Alfred J. Kahn co-direct the Clearinghouse on International Developments in Child, Youth and Family Policies (www.childpolicyintl.org). Funded by a grant from the W.T. Grant Foundation, the Clearinghouse is a web-based databank that provides national, comparative information about the policies, programs, benefits and services available in the advanced industrialized countries to address child, youth and family needs.

IN MEMORIAM

We are sad to announce the death of **Hilde Braunthal** '44 who passed away on March 10, 2001. Ms. Braunthal was a social worker and psychotherapist, and worked as a mental health coordinator at St. Elizabeth's Hospital in Boston. She was on the counseling staff of the Gender Identity Service.

It is with regret that we note the passing of **Emanuel Hallowitz** '46 in December 2000. Mr. Hallowitz was professor emeritus at the University of Chicago School of Social Service Administration, and Director of Social Service at the University of Chicago hospitals and clinics. He was the only social worker to be elected president of the American Group Psychotherapy Association.

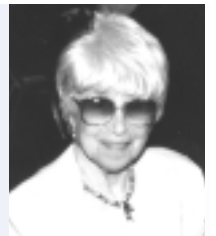
Class of 1996 alumnus **Joseph M. Lopes** tragically lost his life in the American Airlines Flight 587 crash on November 12, 2001. A graduate of San Francisco State University, he worked as a flight attendant for 18 years before earning his master's degree at CUSSW. After working in the HIV clinic at Elmhurst Hospital, he then returned to flying. Proud of his degree from Columbia, he always hoped some day to find a balance between his two careers—flying and social work. His American Airlines colleagues, who often came to him with problems, believed that he had found that balance and that he never stopped being a social worker.

Susan H. Smith '71 has died at the age of 87. A social worker for the Jewish Association for Services to the Aged in Queens, New York, until she retired in 1979, she had worked for social service organizations her entire professional life, beginning in 1940 and continuing throughout World War II. Because of her dedication to the ideals and goals of social work, her family requested that contributions in her memory be directed to the Columbia University School of Social Work.

We are sad to report the passing of **Herbert S. Streaan** '68DSW in June 2000. Dr. Streaan was a Distinguished Professor Emeritus at Rutgers University and Director Emeritus of the New York Center for Psychoanalytic Training.

We regretfully announce the death of **John G. Theban** '39 who died in January 2001. Mr. Theban was the longtime executive director of Family and Child Services of Washington, an agency that offers day care, family counseling, foster care, and senior and adoptive programs.

CUSSW graduate and benefactor **Beatrice Vare** '41 has died at the age of 83. A dedicated and loyal graduate of the School of Social Work, she was an indefatigable supporter of its causes and needs. Until her last illness, she rarely missed a School event, computer workshop, or meeting of the Louard Scholarship Committee, of which she was a devoted member and enthusiastic participant. Her leadership, spirit, and friendship will be sorely missed by all who knew her.



Beatrice Vare

It is with great sadness that we report the death of **Celia B. Weisman** '70DSW. Dr. Weisman fostered interest in and provided information about the work of the United Nations and international issues of concern to local social workers. She was the chair of the United Nations' Annual Social Work Day for almost 10 years.

Dala Scott Wiater, retired associate professor of social work, passed away on March 8, 2001. Ms. Wiater was a member of the CUSSW faculty in the 1950s and 1960s.

It is with regret that we note the passing of **Daisy Wynn** '52. Ms. Wynn worked with Holocaust survivors and other refugees as social worker for Help and Reconstruction at the Self-Help Nursery School in New York. She then worked at the Bureau of Child Guidance of the NYC Board of Education until her retirement in 1987.

OBITUARIES

Rabeya Abbas '64
Harriet B. Baeza '41
Anne M. Braudy '44
Hilde Braunthal '44
Richard Cloward '50
Dolores Ann Conroy '50
Hilda W. Curran '37
Jean A. Cushman '62
Charles Fastov '40
Dorothy S. Goloff '44

Juanita K. Graham '42
Emanuel Hallowitz '46
Jeanette Hanford '44
Theodore Koff '53
Arletta R. Korntheuer '40
Esther M. Lentschner '74DSW
Joseph M. Lopes '96
Ernestine M. Meloney '43
Ira Moss '53
Esther E. Osterman '43

Ines. M. Perez '74
Ruth Pedersen Powers '39
Michael Sarner '74 '85DSW
Norman C. Schauer '70
William E. Scholes '40
Saul Schwarz '51
Georgianna Steinman Sheldon '43
Ram-Noresh Singh '69 '76DSW
Susan H. Smith '71
Herbert S. Streaan '68DSW

John G. Theban '39
Willard Jones Thomas '49
Hugh M. Trantum '37
Minda Turkel '47
Beatrice R. Vare '41
Adele F. Walker '40
Celia B. Weisman '70DSW
Helen L. Welch '42
Muriel S. Whittum '40
Dala Scott Wiater
Daisy K. Wynn '52

MARY RICHMOND SOCIETY MEMBERS GATHER

Interim Dean Sheila B. Kamerman hosted the annual High Tea with the Dean for members of the Mary Richmond Society at the Columbia Club on October 24. The Society, composed of the Columbia University School of Social Work's most dedicated supporters, gathers every year to hear the latest news from the School and selected speakers from the faculty and staff.

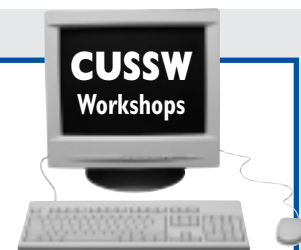


Seated (fromleft):
 Laura Guiterman, Shirley Hellenbrand '43 '65DSW, Blaikie Worth '90, Ann Sand '54. Standing (from left): Patricia Prem, Shelly Butler, Sheila B. Kamerman '73DSW, Ann McCann Oakley, Ned Walsh, and Steven Boss '76

Dean Kamerman described the enormous efforts put forth by the School of Social Work community in the aftermath of the September 11th events. She detailed the contributions made by faculty, staff, alumni/ae, and friends of the School toward New York's recovery in the wake of the disaster.

A viewing of the latest technical advances in computer learning at the School followed. Assistant Dean and Director of Computing and Instructional Technology Ann McCann Oakley, Webmaster Sylvia Shultz, and Systems Analyst Ned Walsh presented the pioneering video and audio techniques used by CUSSW faculty and students. Widely admired at the Council on Social Work Education's Annual Program Meeting when shown there last year, the group's work has been utilized in various schools at Columbia University and in social work schools nationwide.

TWO COMPUTER WORKSHOPS FOR CUSSW ALUMNI/AE



Assistant Dean and Director of Computing and Instructional Technology Ann McCann Oakley and Webmaster Sylvia Shultz will lead a team of computer experts in teaching and assisting alumni/ae in the next computer workshops designed especially for alumni/ae. Spaces for these hands-on workshops are at a premium so register early.

INTRODUCTION TO THE COMPUTER:

E-mail, the Web, and Job Search Resources

Saturday, January 12th, 2002
 8:30 am breakfast and check-in,
 Class 9:00 am-12:00 noon

There is an enormous wealth of opportunity available online, once you know how to use your computer to find it. Our first workshop, "Introduction to the Computer: E-mail, the World Wide Web and Job Search Resources" will acquaint users with computer basics, such as navigating the Web and setting up an email account. It will also highlight the art of finding and using employment resources on the Web.

INTERMEDIATE COMPUTER WORKSHOP:

Research Resources for Social Workers

Tuesday, March 19th, 2002
 5:30 pm refreshments and check-in,
 Class 6:00 pm-9:00 pm

Did you know that the Web doubles in size every six months? A significant percentage of the information available on the Web is created by professional and non-profit organizations and available to anyone with access to the Internet. Our second workshop, "Research Resources for Social Workers," explores the growing variety of Web resources geared toward social work researchers and practitioners that are available at no cost and without a subscription.

Call 212 854-7656 for information on how to register for either of these workshops or send an email to ka270@columbia.edu.

A CALL FOR NOMINATIONS

The CUSSW Alumni Association Nominating Committee is currently accepting nominations in the following areas for its Board of Directors and Nominating Committee. All nominees must reside in the areas indicated and be current members of the CUSSW Alumni Association.

Please return to the Office of Development and Alumni Relations, Attn: Nominating Committee, 622 West 113th Street, Room 417, New York, NY 10025. Nominations may also be sent via email to Jennifer March at jm1404@columbia.edu.

Officers

President-Elect	First Vice President	Second Vice President	Secretary
Area I CT, ME, MA, NH, RI, VT	Area IV Manhattan, Bronx, Staten Island, Queens, Brooklyn (NY)	Area VI AL, FL, GA, LA, MS, TX, SC, TN	Area IX AZ, NV, CO, OR, HI, WA, ID, WY, MT, AK, UT
Area III Long Island and Westchester (NY)	Nominating Committee NY, NJ and CT residents only	Area VII IN, MI, OH, WI	Area X CA
Nominee: _____		Grad Year: _____	
Area or Position Nominated for: _____			

The Alumni Newsletter

is published by The Alumni Association of the Columbia University School of Social Work

MaryEllen Bigham '95
 President (2001-2003)

Alison Fogge '97
 Vice-President (2000-2002)

Eric Stamm '84
 Vice-President (2000-2002)

Dona Hamilton '75 '82 DSW
 Secretary (2001-2002)

EDITORIAL STAFF

Editor

Shelly Butler
 Assistant Dean and Director
 Development and
 Alumni Relations

Assistant Editor

Laura Guiterman Freund
 CUSSW Archivist and Historian

Contributors

Jennifer March
 Alumni Relations Officer

John Matthews
 Assistant Director

Kristen Abbas
 Alumni Assistant

Jane Hoffer
 Photographer

Don't forget to send us your

NEWS & PHOTOS,
 both professional and personal, for the next issue!

Name _____

Class Year _____

Street _____

City _____ State _____

E-mail _____

Zip Code _____

New address? (yes) (no)

Home phone () _____

Work phone () _____

Please send materials to: Alumni Newsletter, CUSSW, 622 W. 113th St., Room 417, New York, NY 10025. Fax to: (212) 854-5181 or send e-mail to: jm1404@columbia.edu

Columbia University
 School of Social Work
 The Alumni Association
 622 West 113th Street, Room 415
 New York, New York 10025-7982

RETURN SERVICE REQUESTED

Nonprofit
 U.S. Postage
PAID
 Syracuse, N.Y.
 Permit No. 3893