

Name \_\_\_\_\_

## Animal Cell Coloring

Directions: Choose a color for each of the parts below and fill in the square with the color of your choice. Color the cell part to match.

Cell Membrane

Ribosome

Cytoplasm

Smooth Endoplasmic  
Reticulum

Nucleoplasm

Rough Endoplasmic  
Reticulum

Nuclear  
Membrane

Mitochondria

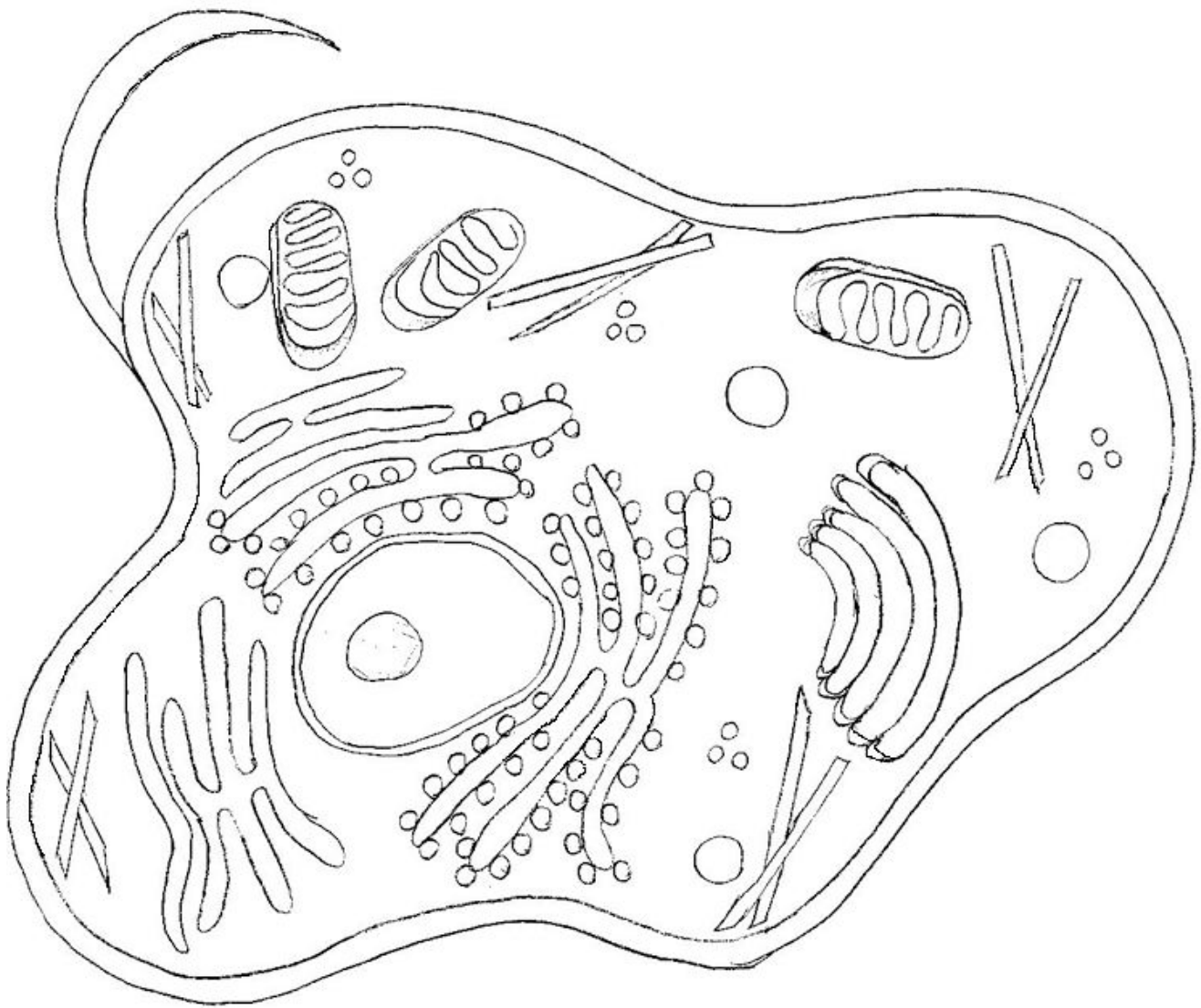
Nucleolus

Lysosome

Golgi Apparatus

Microtubules

Flagella



Briefly describe the function of the cell parts.

1. Cell membrane
2. Endoplasmic Reticulum
3. Ribosome
4. Golgi Apparatus
5. Lysosome
6. Microtubule
7. Mitochondria
8. Nucleus

